

STATE OF ILLINOIS
DEPARTMENT OF TRANSPORTATION

F.A.P. RTE.	SECTION	COUNTY	TOTAL SHEETS	SHEET NO.
600	60-(30,31,128)CJS-1	MADISON	8	1
		ILLINOIS	CONTRACT NO. 76N76	

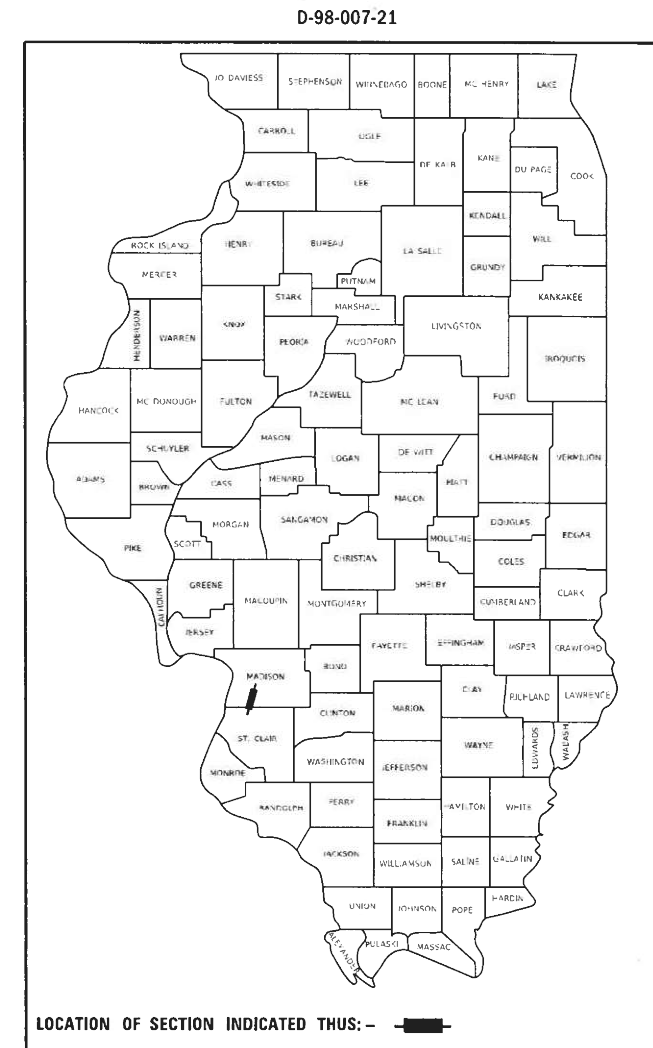
FOR INDEX OF SHEETS, SEE SHEET NO. 2

PROPOSED HIGHWAY PLANS

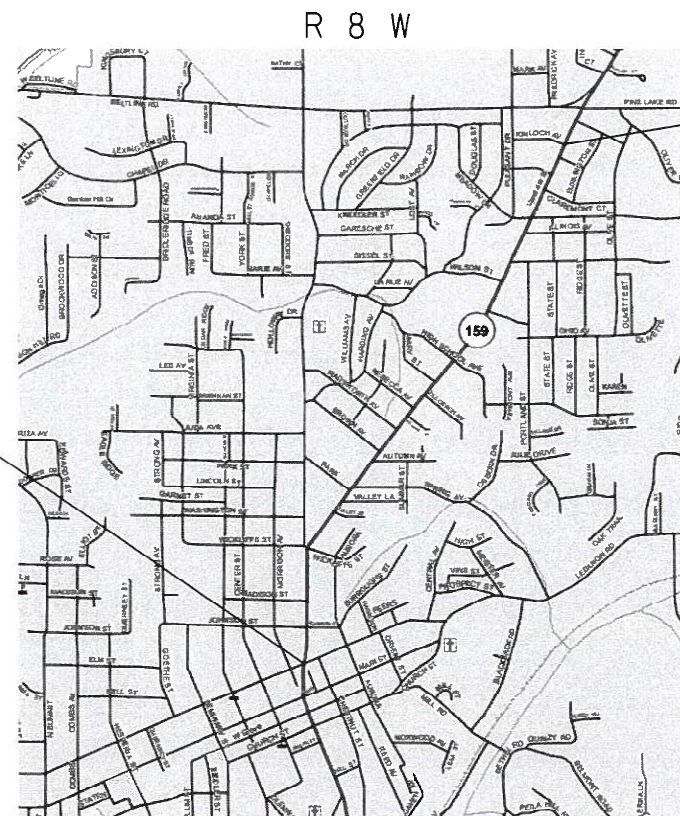
FAP ROUTE 600 (IL 159)
SECTION 60-(30,31,128)CJS-1
PROJECT NHPP-C12Q(490)
CRACK & JOINT SEALING
MADISON COUNTY

C-98-033-21

LOCATION	TRAFFIC DATA IL 159
2019 ADT	18800 (ACTUAL)
2041 ADT	26100 (ESTIMATED)
MU%	1.5
SU%	3.3

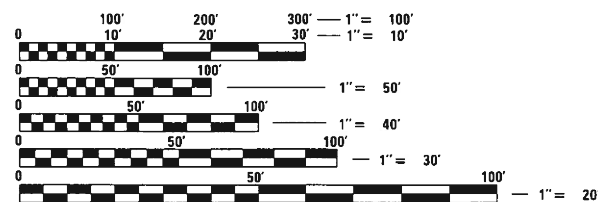


BEGIN PROJECT
STA. 162+37.50
LAT: 38.671833°N
LONG: 89.984711°W



END PROJECT
STA. 240+94.50
LAT: 38.689731°N
LONG: 89.973033°W

LOCATION MAP
(NOT TO SCALE)



FULL SIZE PLANS HAVE BEEN PREPARED USING STANDARD ENGINEERING SCALES. REDUCED SIZED PLANS WILL NOT CONFORM TO STANDARD SCALES. IN MAKING MEASUREMENTS ON REDUCED PLANS, THE ABOVE SCALES MAY BE USED.

J.U.L.I.E.
JOINT UTILITY LOCATION INFORMATION FOR EXCAVATORS
1-800-892-0123
OR 811

PROJECT ENGINEER: HERVE GELIN (618)-346-3179
PROJECT DESIGNER: THOMAS JEFFERSON (618)-346-3412

CONTRACT NO. 76N76

GROSS LENGTH = 7857 FT. = 1.49 MILE
NET LENGTH = 7857 FT. = 1.49 MILE

STATE OF ILLINOIS
DEPARTMENT OF TRANSPORTATION

SUBMITTED April 30 2020
Keith Roberts
REGIONAL ENGINEER

June 26, 2020 *Joe E.A. Etk*
ENGINEER OF DESIGN AND ENVIRONMENT

June 26, 2020 *James J. Gu*
DIRECTOR OF HIGHWAYS PROJECT IMPLEMENTATION 13

PRINTED BY THE AUTHORITY
OF THE STATE OF ILLINOIS

INDEX OF SHEETS

- 1 COVER SHEET
- 2 INDEX OF SHEETS, HIGHWAY STANDARDS, GENERAL NOTES, COMMITMENTS
- 3 SUMMARY OF QUANTITIES
- 4-6 TYPICAL SECTIONS
- 7 SCHEDULE OF QUANTITIES
- 8 CRACK & JOINT SEALING DETAILS

HIGHWAY STANDARDS

- 000001-07 STANDARD SYMBOLS, ABBREVIATIONS AND PATTERNS
- 001006 DECIMAL OF AN INCH AND OF A FOOT
- 701426-09 LANE CLOSURE, MULTILANE, INTERMITTENT OR MOVING OPER., FOR SPEEDS ≥ 45 MPH
- 701602-10 URBAN LANE CLOSURE, MULTILANE, 2W WITH BIDIRECTIONAL LEFT TURN LANE
- 701606--10 URBAN SINGLE LANE CLOSURE, MULTILANE, 2W WITH MOUNTABLE MEDIAN
- 701701-10 URBAN LANE CLOSURE, MULTILANE INTERSECTION
- 701901-08 TRAFFIC CONTROL DEVICES

GENERAL NOTES

- ① ESTIMATED CRACK FILLING APPLICATION RATE : 0.4 LB/FT
- ② NO SURVEY WAS PERFORMED FOR THIS PROJECT. THE PLANS WERE CREATED USING MICROFILM AND FIELD MEASUREMENTS.
- ③ TWO CHANGEABLE MESSAGE SIGNS SHALL BE PLACED 14 DAYS IN ADVANCE OF CONSTRUCTION. EXACT LOCATION OF CHANGEABLE MESSAGE SIGNS SHALL BE DETERMINED BY THE ENGINEER.
- ④ THE DEPARTMENT STRONGLY ENCOURAGES THE PRIME CONTRACTOR AND THEIR APPROVED SUB-CONTRACTORS TO HIRE MINORITY, WOMEN AND DISADVANTAGED INDIVIDUALS FROM ITS FEDERALLY FUNDED HIGHWAY CONSTRUCTION CAREERS TRAINING PROGRAM (HCCTP) TO HELP MEET WORKFORCE AND TRAINEE GOALS. THIS PROGRAM IS TRAINING MINORITIES, WOMEN AND DISADVANTAGED INDIVIDUALS IN HIGHWAY CONSTRUCTION-RELATED SKILLS, E.G., MATH FOR THE TRADES, JOB READINESS, TECHNICAL SKILLS IN COURSEWORK (CARPENTRY, CONCRETE FLATWORK, BLUEPRINT READING, SITE PLANS, SITE WORK, TOOLS USE, ETC.) AND OSHA 10 HOUR CERTIFICATION, TO PREPARE THEM FOR A CAREER IN THE HIGHWAY CONSTRUCTION TRADES. GRADUATES ARE WELL-TRAINED AND READY TO BECOME PRODUCTIVE ENTRY-LEVEL CONSTRUCTION WORKERS. CONTACT THE DISTRICT 8 EEO OFFICE AT 618-346-3360 AND/OR THE HCCTP COORDINATOR AT 618-874-6528 TO LEARN MORE ABOUT THE PROGRAM AND FOR ASSISTANCE IN METTING WORKFORCE AND TRAINEE GOALS.

COMMITMENTS

NONE

MIXTURE REQUIREMENTS

ROUTE	FAP 600 (IL 159)
SECTION	60-(30,31,128)CJS-1
COUNTY	Madison
CONTRACT	76N76

DESCRIPTION:	Crack and Joint Sealing on IL 159 from Clay St to Kinloch Ave
---------------------	--

ADT (Construction Yr)	18800
MU%:	1.5
SU%:	3.3
20 YR. ESAL'S:	2.43

MIXTURE USE					Partial Depth Patch
AC/PG					PG 64-22
RAP % (MAX)					SEE SPECIAL
DESIGN AIR VOIDS					4.0% @Ndes=70
MIX COMPOSITION (Gradation)					IL 9.5
FRICTION AGG					MIXTURE "D"
QUALITY MGMT PROGRAM					QC/QA

MODEL: S:\MODEL\NAMES
 FILE NAME: pwr\p\annoon\dot\illinois\gov\HWIDOT\Documents\DOT_Offices\District 8\Projects\District 8\CAD\data\CAD\sheet\876N76\876N76-sh-egenote.dgn

USER NAME = jeffersons	DESIGNED - _____	REVISED - _____
	DRAWN - _____	REVISED - _____
PLOT SCALE = 100,4423 ' / in.	CHECKED - _____	REVISED - _____
PLOT DATE = 4/22/2020	DATE - _____	REVISED - _____

**STATE OF ILLINOIS
DEPARTMENT OF TRANSPORTATION**

INDEX OF SHEETS, HIGHWAY STANDARDS, GENERAL NOTES	
COMMITMENTS	
SCALE: _____	SHEET 1 OF 1 SHEETS STA. _____ TO STA. _____

F.A.P. RTE.	SECTION	COUNTY	TOTAL SHEETS	SHEET NO.
600	60-(31,31,128)CJS-1	MADISON	8	2
CONTRACT NO. 76N76				
ILLINOIS FED. AID PROJECT				

MODEL: \\H0DELNAME\$
 FILE: \\NAME\$.prn @illinois.gov:PWIDOT\Documents\DOT_Offices\Districts\B\Projects\0876N76\CAD\Drawings\0876N76-ht-500.dgn

CODE NO.	ITEM	UNIT	TOTAL QUANTITY	CONSTR. CODE
				80% FED 20% STATE
				NONE
				0005
				URBAN
45100100	CRACK ROUTING (PAVEMENT)	FOOT	46445	46445
45100200	CRACK FILLING	POUND	18578	18578
67100100	MOBILIZATION	L SUM	1	1
70102625	TRAFFIC CONTROL AND PROTECTION, STANDARD 701606	L SUM	1	1
70102632	TRAFFIC CONTROL AND PROTECTION, STANDARD 701602	L SUM	1	1
70102635	TRAFFIC CONTROL AND PROTECTION, STANDARD 701701	L SUM	1	1
70107025	CHANGEABLE MESSAGE SIGN	CAL DA	43	43
70200100	NIGHTTIME WORK ZONE LIGHTING	L SUM	1	1
* 78001110	PAINT PAVEMENT MARKING - LINE 4"	FOOT	3000	3000
X4406225	PARTIAL DEPTH REMOVAL, TYPE II, 2.5"	SQ YD	34	34
X4406425	PARTIAL DEPTH REMOVAL, TYPE III, 2.5"	SQ YD	67	67
X4406625	PARTIAL DEPTH REMOVAL, TYPE IV, 2.5"	SQ YD	160	160
X4421000	PARTIAL DEPTH PATCHING	TON	38	38

* SPECIALTY ITEM

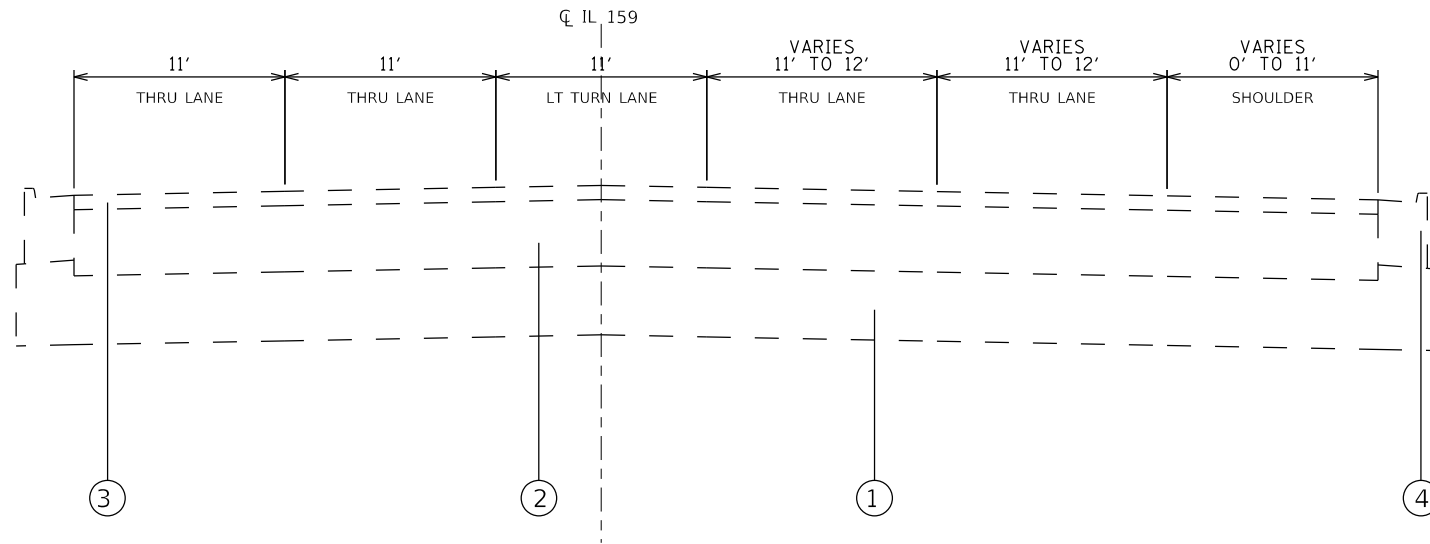
USER NAME = jeffersonts	DESIGNED - _____	REVISED - _____
	DRAWN - _____	REVISED - _____
PLOT SCALE = 100.4315' / in.	CHECKED - _____	REVISED - _____
PLOT DATE = 4/24/2020	DATE - _____	REVISED - _____

**STATE OF ILLINOIS
DEPARTMENT OF TRANSPORTATION**

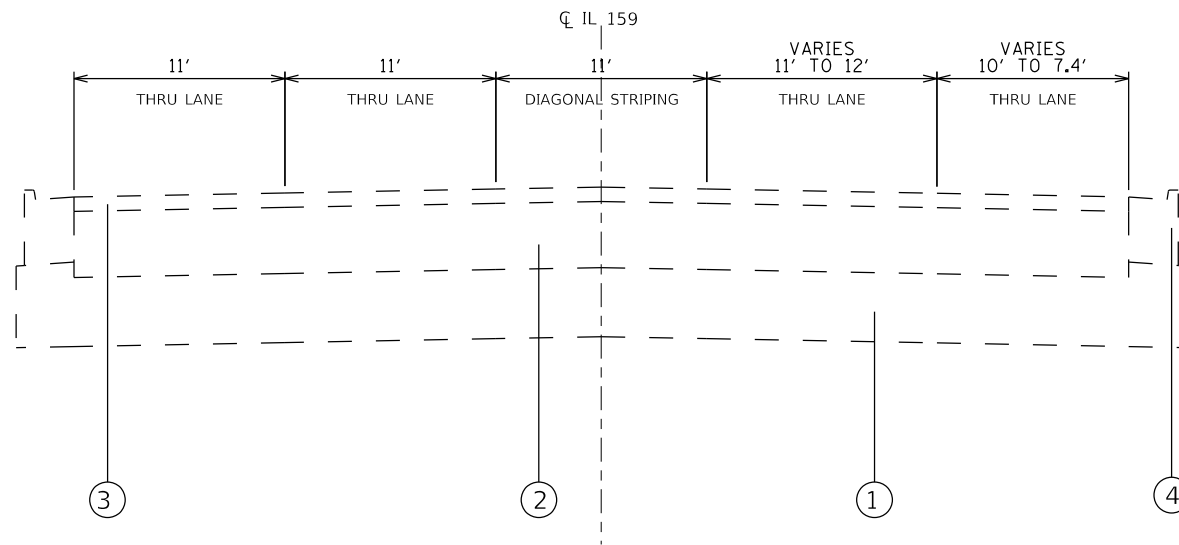
SUMMARY OF QUANTITIES

SCALE: _____ SHEET ___ OF ___ SHEETS STA. _____ TO STA. _____

F.A.P. RTE.	SECTION	COUNTY	TOTAL SHEETS	SHEET NO.
600	60-(30,31,128)CJ5-1	MADISON	8	3
			CONTRACT NO. 76N76	
ILLINOIS FED. AID PROJECT				



EXISTING TYPICAL SECTION
STA. 162+37.50 TO STA. 162+92.50



EXISTING TYPICAL SECTION
STA. 162+92.50 TO STA. 165+36.00

- LEGEND**
- ① AGGREGATE BASE COURSE, TYPE A, 12"
 - ② HOT-MIX ASPHALT BINDER COURSE, IL-19, N90, 11.5'
 - ③ POLYMERIZED HOT-MIX ASPHALT SURFACE COURSE, MIX E, N90, 2.5"
 - ④ COMBINATION CONCRETE CURB AND GUTTER, TYPE B 6.24

MODEL: SHODLEINAMES
FILE NAME: I:\pub\inroom.dwg;illinois.gov;PWIDOT\Documents\DOT_Offices\Brdet_8\Projects\162+37.50-162+92.50\162+37.50-162+92.50.dwg

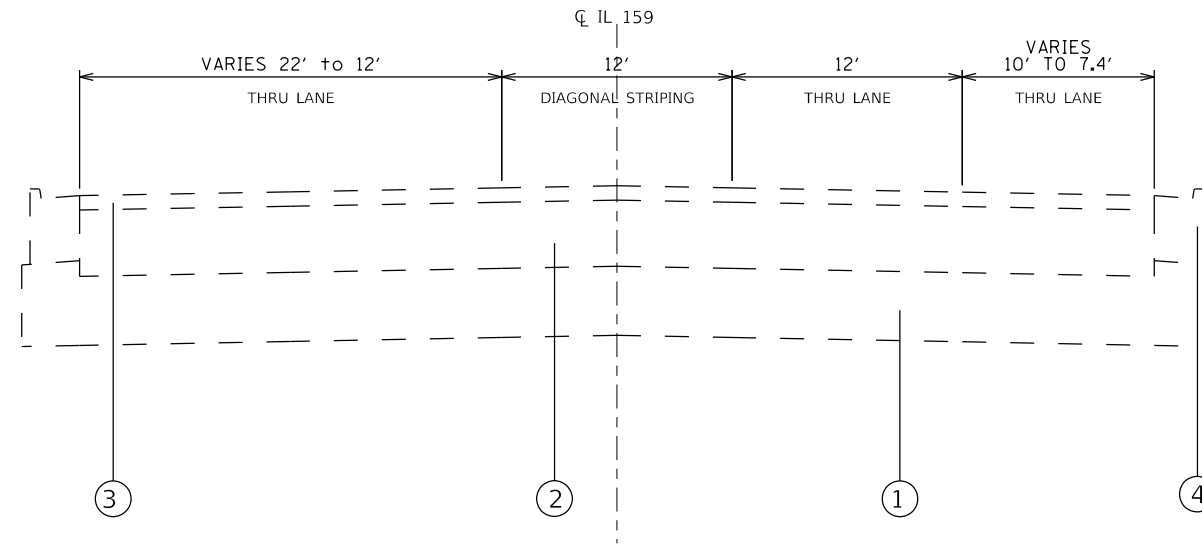
USER NAME = jeffersons	DESIGNED - _____	REVISED - _____
	DRAWN - _____	REVISED - _____
PLOT SCALE = 100.0924' / in.	CHECKED - _____	REVISED - _____
PLOT DATE = 4/9/2020	DATE - _____	REVISED - _____

**STATE OF ILLINOIS
DEPARTMENT OF TRANSPORTATION**

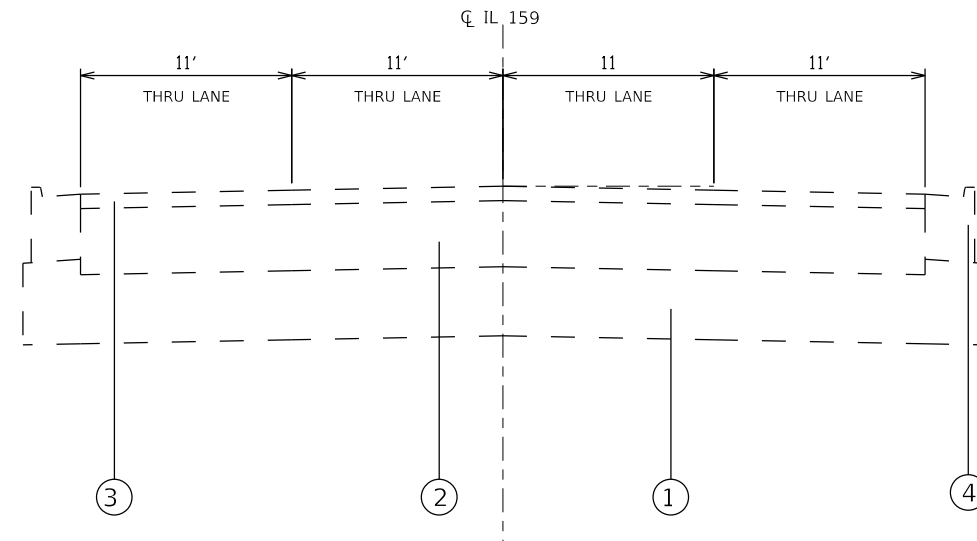
EXISTING TYPICAL SECTION

SCALE: _____ SHEET ____ OF ____ SHEETS STA. _____ TO STA. _____

F.A.P. RTE.	SECTION	COUNTY	TOTAL SHEETS	SHEET NO.
600	60-(30.341,128)CJS-1	MADISON	8	4
CONTRACT NO. 76N76				
ILLINOIS FED. AID PROJECT				



EXISTING TYPICAL SECTION
STA. 165+36.00 TO STA. 167+65.00



EXISTING TYPICAL SECTION
STA. 167+65.00 TO STA. 171+94.00

- LEGEND**
- ① AGGREGATE BASE COURSE, TYPE A, 12"
 - ② HOT-MIX ASPHALT BINDER COURSE, IL-19, N90, 11.5"
 - ③ POLYMERIZED HOT-MIX ASPHALT SURFACE COURSE, MIX E, N90, 2.5"
 - ④ COMBINATION CONCRETE CURB AND GUTTER, TYPE B 6.24

MODEL SHEET NAMES
 FILE NAME: c:\p1anroom\dtd\illinois\gov\PVIDOT\Documents\DOT_Offices\Dist\B\Projects\0776N76\CADD\Drawings\CAD\Drawings\0776N76-01-01-01.dwg

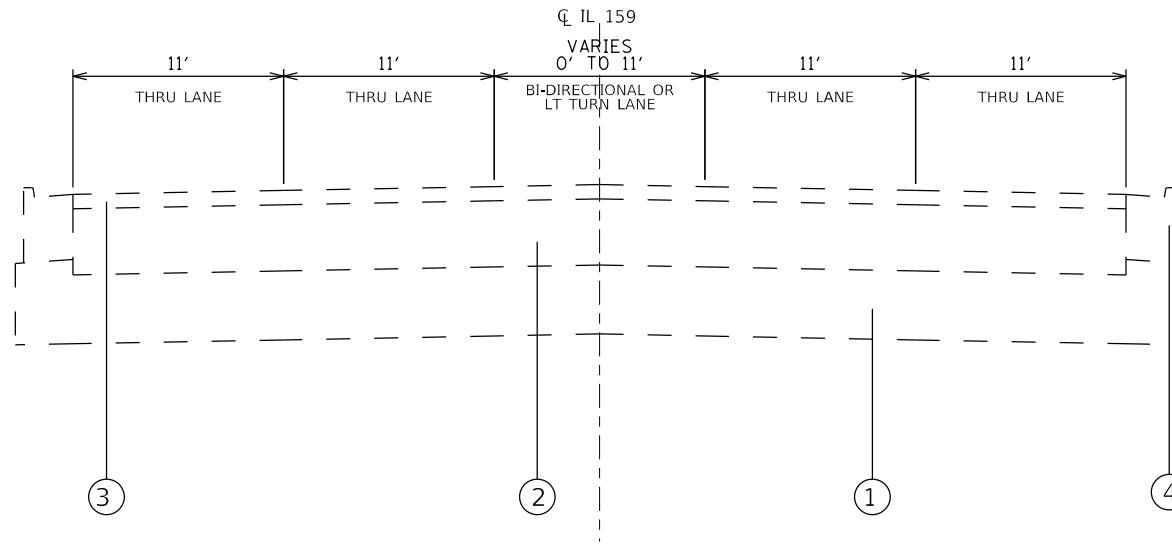
USER NAME = jeffersons	DESIGNED - _____	REVISED - _____
	DRAWN - _____	REVISED - _____
PLOT SCALE = 100.0162' / in.	CHECKED - _____	REVISED - _____
PLOT DATE = 4/9/2020	DATE - _____	REVISED - _____

**STATE OF ILLINOIS
DEPARTMENT OF TRANSPORTATION**

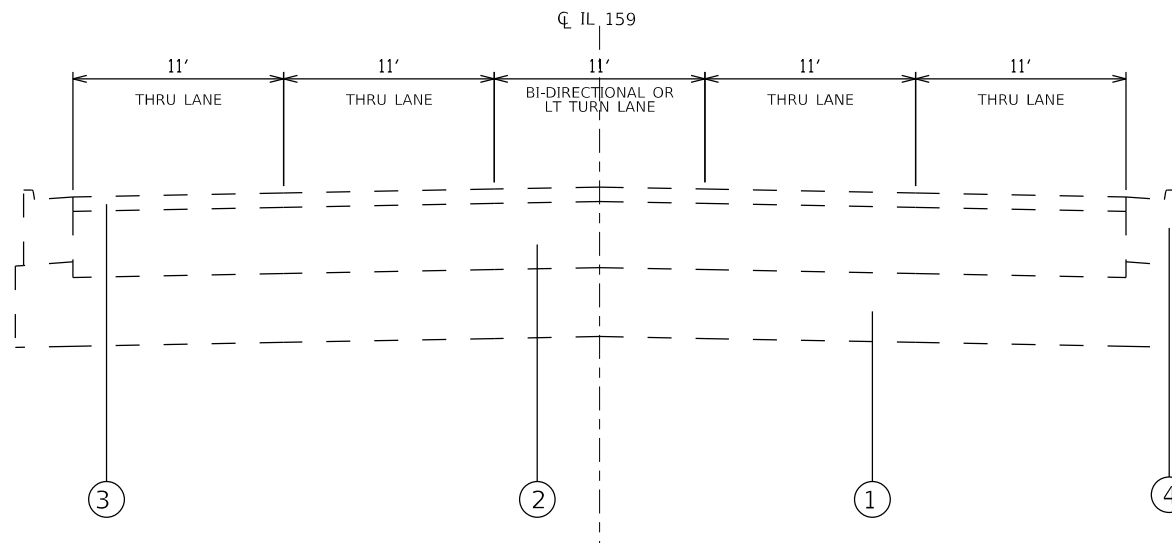
EXISTING TYPICAL SECTION

SCALE: _____ SHEET _____ OF _____ SHEETS STA. _____ TO STA. _____

F.A.P. RTE.	SECTION	COUNTY	TOTAL SHEETS	SHEET NO.
600	60-(30.341,128)CJS-1	MADISON	8	5
CONTRACT NO. 76N76				
ILLINOIS FED. AID PROJECT				



EXISTING TYPICAL SECTION
STA. 171+94.00 TO STA. 175+79.00



EXISTING TYPICAL SECTION
STA. 175+79.00 TO STA. 240+94.50

- LEGEND**
- ① AGGREGATE BASE COURSE, TYPE A, 12"
 - ② HOT-MIX ASPHALT BINDER COURSE, IL-19, N90, 11.5'
 - ③ POLYMERIZED HOT-MIX ASPHALT SURFACE COURSE, MIX E, N90, 2.5"
 - ④ COMBINATION CONCRETE CURB AND GUTTER, TYPE B 6.24

MODEL: \$MODELNAME\$
FILE NAME: p:\g10\1000m.d\illinois.gov\p10\DOT\Documents\DOT - Offices\District 8\Projects\0876\76\CAD\Drawings\CAD\Drawings\0876\76\T-11-Typical.dgn

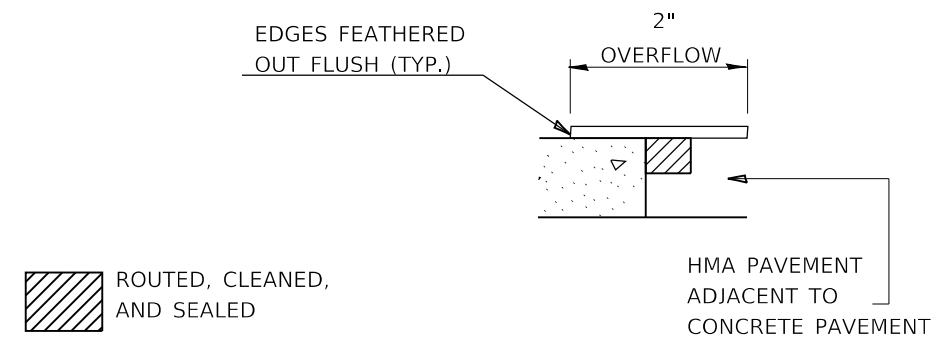
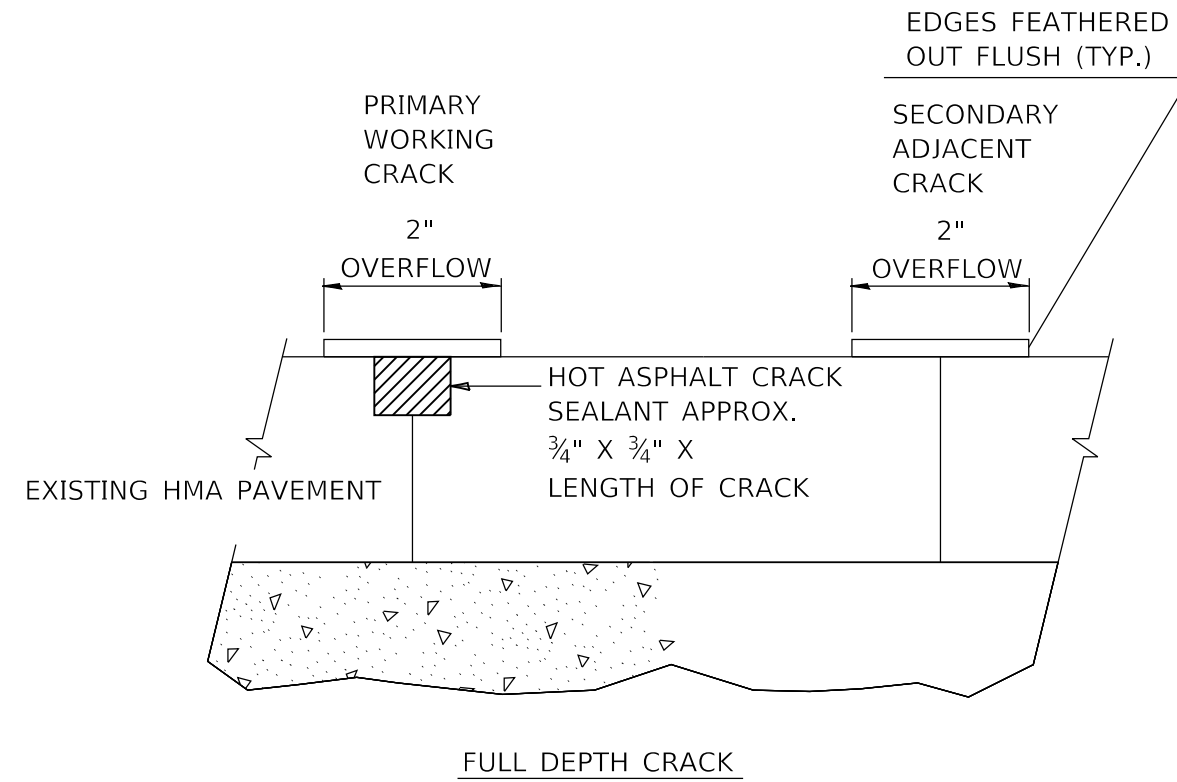
USER NAME = jeffersons	DESIGNED - _____	REVISED - _____
	DRAWN - _____	REVISED - _____
PLOT SCALE = 100.2415' / in.	CHECKED - _____	REVISED - _____
PLOT DATE = 4/15/2020	DATE - _____	REVISED - _____

**STATE OF ILLINOIS
DEPARTMENT OF TRANSPORTATION**

EXISTING TYPICAL SECTION

SCALE: _____ SHEET ___ OF ___ SHEETS STA. _____ TO STA. _____

F.A.P. RTE.	SECTION	COUNTY	TOTAL SHEETS	SHEET NO.
600	60-(30,341,128)CJ5-1	MADISON	8	6
ILLINOIS FED. AID PROJECT			CONTRACT NO. 76N76	



CRACK & JOINT SEALING DETAILS

MODEL: S:\MODEL\MARIES
 FILE NAME: p:\p1\p1room\detail\illinois.gov\p1\DOT\Documents\DOT_Offices\Uhr\itc_8\Projects\DR76N76\CA\DD\Draws\CA\Drawings\DR76N76-SH-Details.dgn

USER NAME = jeffersonts	DESIGNED - _____	REVISED - _____
	DRAWN - _____	REVISED - _____
PLOT SCALE = 100.4815' / in.	CHECKED - _____	REVISED - _____
PLOT DATE = 4/9/2020	DATE - _____	REVISED - _____

STATE OF ILLINOIS
DEPARTMENT OF TRANSPORTATION

CRACK & JOINT SEALING DETAILS	
SCALE: _____	SHEET ___ OF ___ SHEETS STA. _____ TO STA. _____

F.A.P. RTE.	SECTION	COUNTY	TOTAL SHEETS	SHEET NO.
600	60-(30,31,128)CJ5-1	MADISON	8	8
CONTRACT NO. 76N76				
ILLINOIS FED. AID PROJECT				