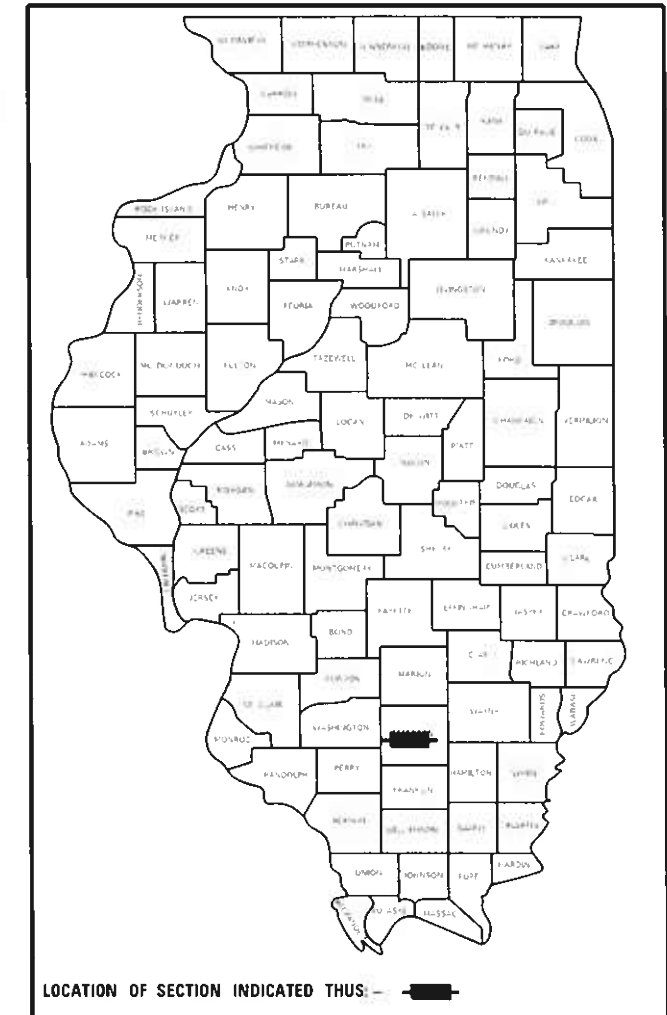


STATE OF ILLINOIS
DEPARTMENT OF TRANSPORTATION

FAI RATE	SECTION	COUNTY	TOTAL SHEETS	SHEET NO.
64	D9 PATCH 2021-2	JEFFERSON	10	1
		ILLINOIS	CONTRACT NO. 78807	

D-99-060-20



FOR INDEX OF SHEETS, SEE SHEET NO. 3
FOR SUMMARY OF QUANTITIES, SEE SHEET NO. 4,5

PROPOSED HIGHWAY PLANS

FAI ROUTE 64 (I-64)
SECTION D9 PATCH 2021-2
PATCHING
JEFFERSON COUNTY

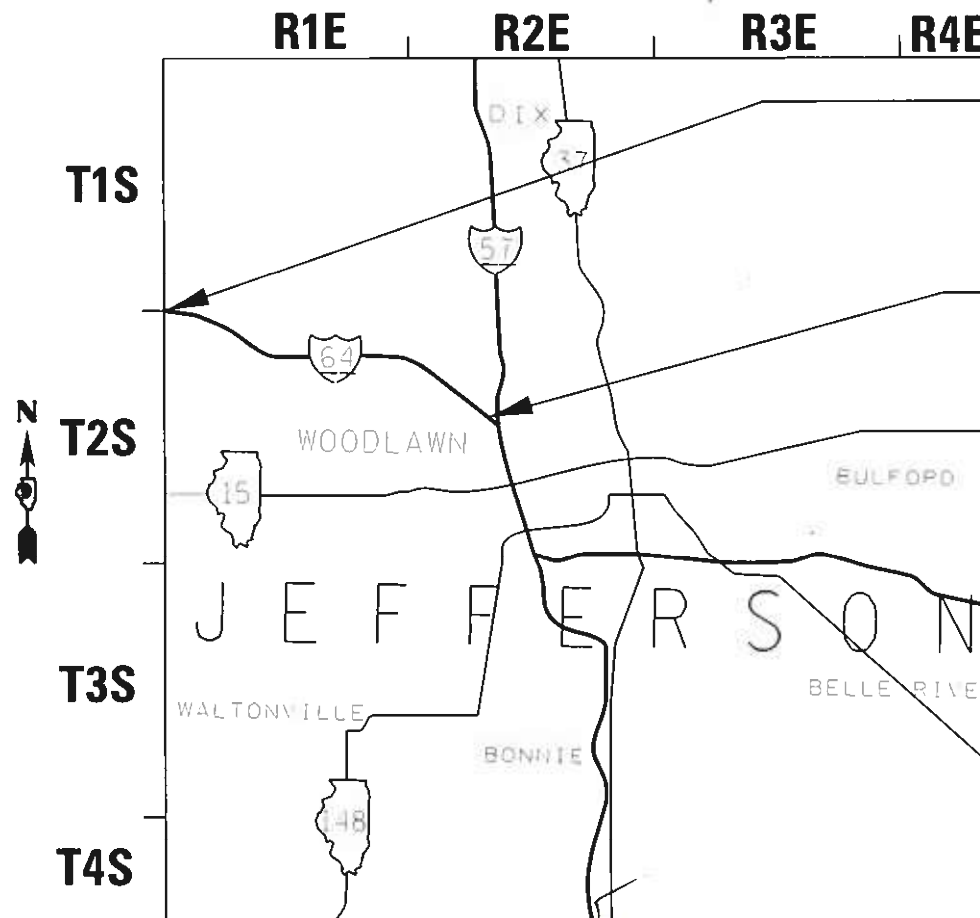
C-99-080-20

TRAFFIC DATA

2018 ADT 26,100 WITH 31% TRUCKS

TOWNSHIPS

CASNER T2S R1E
SHILOH T2S R2E



PROJECT BEGINS
I-64 MP 62

PROJECT ENDS
I-64 MP 73



GROSS LENGTH = 22 MILES
NET LENGTH = 22 MILES

FULL SIZE PLANS HAVE BEEN PREPARED USING STANDARD
ENGINEERING SCALES. REDUCED SIZED PLANS WILL NOT
CONFORM TO STANDARD SCALES. IN MAKING MEASUREMENTS
ON REDUCED PLANS, THE ABOVE SCALES MAY BE USED.

J.U.L.I.E.
JOINT UTILITY LOCATION INFORMATION FOR EXCAVATORS
1-800-892-0123
OR 811

PROJECT ENGINEER SUSAN POE
PROJECT MANAGER JOHN ROBINSON

CONTRACT NO. 78807

STATE OF ILLINOIS
DEPARTMENT OF TRANSPORTATION

SUBMITTED 07-22-20
[Signature]
REGIONAL ENGINEER

June 26, 2020 [Signature]
ENGINEER OF DESIGN AND ENVIRONMENT

June 26, 2020 [Signature]
DIRECTOR OF HIGHWAYS PROJECT IMPLEMENTATION 13

PRINTED BY THE AUTHORITY
OF THE STATE OF ILLINOIS

SUMMARY OF QUANTITIES

COUNTY:	COUNTY:	JEFFERSON
ROUTE:	ROUTE:	FAI 64 (I-64)
FUNDING:	FUNDING:	100% STATE
LOCATION:	LOCATION:	RURAL

CODE NUMBER	ITEM DESCRIPTION	UNIT	TOTAL QUANTITY	ROADWAY 0005
40600290	BITUMINOUS MATERIALS (TACK COAT)	POUND	3,482	3,482
44200577	CLASS A PATCHES, TYPE II, 12 INCH	SQ YD	120	120
44200581	CLASS A PATCHES, TYPE III, 12 INCH	SQ YD	20	20
44200583	CLASS A PATCHES, TYPE IV, 12 INCH	SQ YD	27	27
44213000	PATCHING REINFORCEMENT	SQ YD	160	160
44213200	SAW CUTS	FOOT	802	802
44213204	TIE BARS 3/4"	EACH	163	163
67100100	MOBILIZATION	L SUM	1	1
70100420	TRAFFIC CONTROL AND PROTECTION, STANDARD 701411	EACH	4	4
70100800	TRAFFIC CONTROL AND PROTECTION, STANDARD 701401	L SUM	1	1
70107025	CHANGEABLE MESSAGE SIGN	CAL DA	28	28
70200100	NIGHTTIME WORK ZONE LIGHTING	L SUM	1	1

MODEL: Default
 FILE: \\blm1c01.pw.state.il.us\pub\lansom.dta\illinois.gov\PW\DOT\Documents\DOT_Offices\District 9\Projects\78807\CADD\DATA\CAD\Sheets\D9\78807-Sheets.dgn

USER NAME = greenleesm	DESIGNED -	REVISED -
	DRAWN -	REVISED -
PLOT SCALE = 100.0000 ' / in.	CHECKED -	REVISED -
PLOT DATE = 4/29/2020	DATE -	REVISED -

**STATE OF ILLINOIS
DEPARTMENT OF TRANSPORTATION**

SUMMARY OF QUANTITIES

SCALE: SHEET 1 OF 2 SHEETS STA. TO STA.

F.A.I. RTE.	SECTION	COUNTY	TOTAL SHEETS	SHEET NO.
64	D9 PATCH 2021-2	JEFFERSON	10	4
			CONTRACT NO. 78807	
		ILLINOIS FED. AID PROJECT		

SUMMARY OF QUANTITIES - CONT

COUNTY:	COUNTY:	JEFFERSON
ROUTE:	ROUTE:	FAI 64 (I-64)
FUNDING:	FUNDING:	100% STATE
LOCATION:	LOCATION:	RURAL

CODE NUMBER	ITEM DESCRIPTION	UNIT	TOTAL QUANTITY	ROADWAY
				0005
X4406020	PARTIAL DEPTH REMOVAL, TYPE I, 2"	SQ YD	55	55
X4406220	PARTIAL DEPTH REMOVAL, TYPE II, 2"	SQ YD	361	361
X4406420	PARTIAL DEPTH REMOVAL, TYPE III, 2"	SQ YD	349	349
X4406620	PARTIAL DEPTH REMOVAL, TYPE IV, 2"	SQ YD	6,958	6,958
X4421000	PARTIAL DEPTH PATCHING	TON	883	883

MODEL: Default
 FILE: \\nas101.pw.state.il.us\pub\harcourt\dot\Documents\DOT_Offices\JLH\dot\9\Projects\78807\CADD\DATA\CAD\Sheets\0978807-Sheets.dgn

USER NAME = greenleesm	DESIGNED -	REVISED -
	DRAWN -	REVISED -
PLOT SCALE = 100.0000 ' / in.	CHECKED -	REVISED -
PLOT DATE = 4/29/2020	DATE -	REVISED -

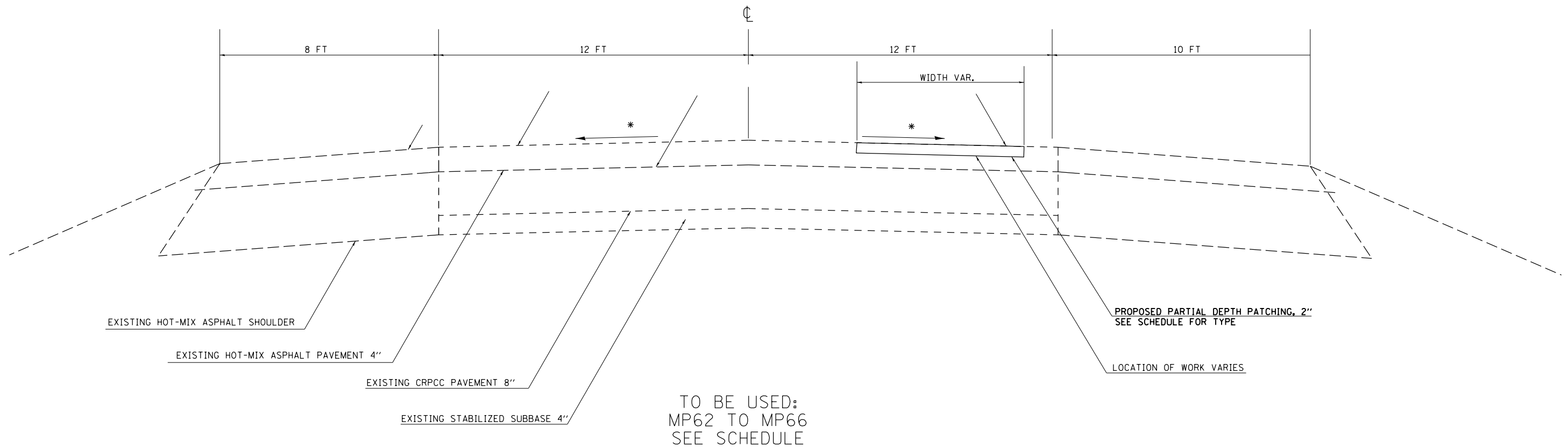
**STATE OF ILLINOIS
DEPARTMENT OF TRANSPORTATION**

SUMMARY OF QUANTITIES

SCALE: SHEET 2 OF 2 SHEETS STA. TO STA.

F.A.I. RTE.	SECTION	COUNTY	TOTAL SHEETS	SHEET NO.
64	D9 PATCH 2021-2	JEFFERSON	10	5
CONTRACT NO. 78807				
		ILLINOIS	FED. AID PROJECT	

TYPICAL SECTION



NOTES:

*MATCH EXISTING CROSS SLOPE

NOTE:

EXISTING LONGITUDINAL REINFORCEMENT NO.5 REBAR- PLACE INTERIOR SAW CUTS AT 18 INCHES ACCORDING TO STANDARD 442001-04. ADJUSTMENTS MAY BE MADE FOR EXISTING FIELD CONDITIONS.

MODEL: Default
FILE: \\blm1c1.pw.us.ibm.com\data\illinois.gov\PW\DOT\Documents\DOT_Offices\District 9\Projects\78807\CADD\Drawings\9778807-Sheets.dgn

USER NAME = greenleesm	DESIGNED -	REVISED -
	DRAWN -	REVISED -
PLOT SCALE = 100.0000 ' / in.	CHECKED -	REVISED -
PLOT DATE = 4/29/2020	DATE -	REVISED -

**STATE OF ILLINOIS
DEPARTMENT OF TRANSPORTATION**

TYPICAL SECTION

SCALE: SHEET OF SHEETS STA. TO STA.

F.A.I. RTE.	SECTION	COUNTY	TOTAL SHEETS	SHEET NO.
64	D9 PATCH 2021-2	JEFFERSON	10	6
CONTRACT NO. 78807				
ILLINOIS FED. AID PROJECT				

I-64 EAST BOUND PATCHING (ESTIMATE ONLY)

LOCATION	WIDTH	LENGTH	CLASS A PATCHES, TYPE II, 12 INCH	CLASS A PATCHES, TYPE III, 12 INCH	CLASS A PATCHES, TYPE IV, 12 INCH	PARTIAL DEPTH REMOVAL, TYPE I, 2"	PARTIAL DEPTH REMOVAL, TYPE II, 2"	PARTIAL DEPTH REMOVAL, TYPE III, 2"	PARTIAL DEPTH REMOVAL, TYPE IV, 2"	PARTIAL DEPTH PATCHING	BIT MAT. (TACK COAT)	SAW CUTS	PATCHING REINF.	TIE BARS 3/4"
MP	DRIVING LANE													
I-64 EAST BOUND			SQYD	SQYD	SQYD	SQYD	SQYD	SQYD	SQYD	TON	POUND	FOOT	SQYD	EACH
62.30	6	20	14									64	14	14
65.46	12	100							134	15	60			
65.51	2	50					12			2	5			
65.61	12	750							1000	112	450			
66.16	2	25				6				1	3			
66.20	5	9	5									38	5	6
66.26	2	26				6				1	3			
66.33	2	105					24			3	11			
66.50	2	803							179	20	81			
66.60	6	10	7									44	7	7
66.72	12	195							260	30	117			
66.81	2	106					24			3	11			
67.25	2	116					26			3	12			
67.36	13	227							328	37	148			
67.49	12	264							352	40	159			
67.54	12	30					40			5	18			
72.60	6	10	7											
TOTAL			33	0	0	12	126	0	2253	272	1078	146	26	27

MODEL: Default
 FILE: \\nrcs-pub\planroom\dat\illinois\pwr\DOT\Documents\DOT_Offices\District_9\Projects\78807\CADD\Drawings\978807-Sheets.dgn

USER NAME = greenleesm	DESIGNED -	REVISED -
	DRAWN -	REVISED -
PLOT SCALE = 100.0000' / in.	CHECKED -	REVISED -
PLOT DATE = 4/29/2020	DATE -	REVISED -

**STATE OF ILLINOIS
DEPARTMENT OF TRANSPORTATION**

**PATCHING SCHEDULE
I-64 EASTBOUND**

SCALE: SHEET 1 OF 1 SHEETS STA. TO STA.

F.A.I. RTE.	SECTION	COUNTY	TOTAL SHEETS	SHEET NO.
64	D9 PATCH 2021-2	JEFFERSON	10	7
CONTRACT NO. 78807				
ILLINOIS			FED. AID PROJECT	

I-64 WEST BOUND PATCHING (ESTIMATE ONLY)

LOCATION	WIDTH	LENGTH	CLASS A PATCHES, TYPE II, 12 INCH	CLASS A PATCHES, TYPE III, 12 INCH	CLASS A PATCHES, TYPE IV, 12 INCH	PARTIAL DEPTH REMOVAL, TYPE I, 2"	PARTIAL DEPTH REMOVAL, TYPE II, 2"	PARTIAL DEPTH REMOVAL, TYPE III, 2"	PARTIAL DEPTH REMOVAL, TYPE IV, 2"	PARTIAL DEPTH PATCHING	BIT MAT. (TACK COAT)	SAW CUTS	PATCHING REINF.	TIE BARS 3/4"
MP	DRIVING LANE													
I-64 WEST BOUND			SQYD	SQYD	SQYD	SQYD	SQYD	SQYD	SQYD	TON	POUND	FOOT	SQYD	EACH
72.70	6	15	10									54	10	10
72.70	6	15	10									54	10	10
72.57	6	10				7				1	3			
72.51	3	15				5				1	3			
72.47	6	10				7				1	3			
72.40	6	20	14									64	14	14
72.39	12	50						67		8	30			
72.22	12	486							648	73	292			
71.91	2	1157							258	29	116			
71.90	4	15	7									46	7	10
71.62	12	20					27			3	12			
71.60	12	143							191	22	86			
71.40	6	30		20								84	20	20
71.39	12	80							107	12	48			
71.34	12	158							211	24	95			
71.13	12	20					27			3	12			
70.96	12	105							140	16	63			
70.50	12	158							211	24	95			
70.44	12	25					34			4	15			
70.40	4	25	12									66	12	17
70.09	12	42						56		7	26			
70.04	13	243							351	40	158			
69.46	2	25				6				1	3			
68.42	2	400						89		10	40			
68.41	2	200					45			5	20			
67.76	2	205					46			6	21			
67.46	2	22				5				1	3			
66.56	2	25				6				1	3			
66.11	2	2442							543	61	245			
65.71	2	30				7				1	3			
65.46	2	70					16			2	7			
Sheet Total 1			53	20	0	43	195	212	2660	356	1402	368	73	81

MODEL: Default
 FILE: h:\a\c\p\pub\haronom.dwg
 PROJECT: 78807\CADD\DATA\CAD\haronom.dwg
 SHEET: 78807-Sheets.dgn

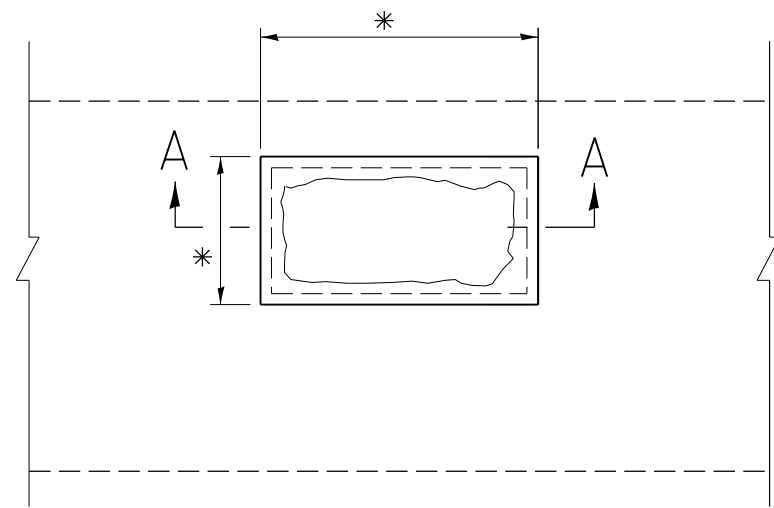
USER NAME = greenleesm	DESIGNED -	REVISED -
	DRAWN -	REVISED -
PLOT SCALE = 100,0000' / in.	CHECKED -	REVISED -
PLOT DATE = 4/29/2020	DATE -	REVISED -

**STATE OF ILLINOIS
DEPARTMENT OF TRANSPORTATION**

PATCHING SCHEDULE I-64 WESTBOUND			
SCALE:	SHEET 1	OF 2 SHEETS	STA. TO STA.

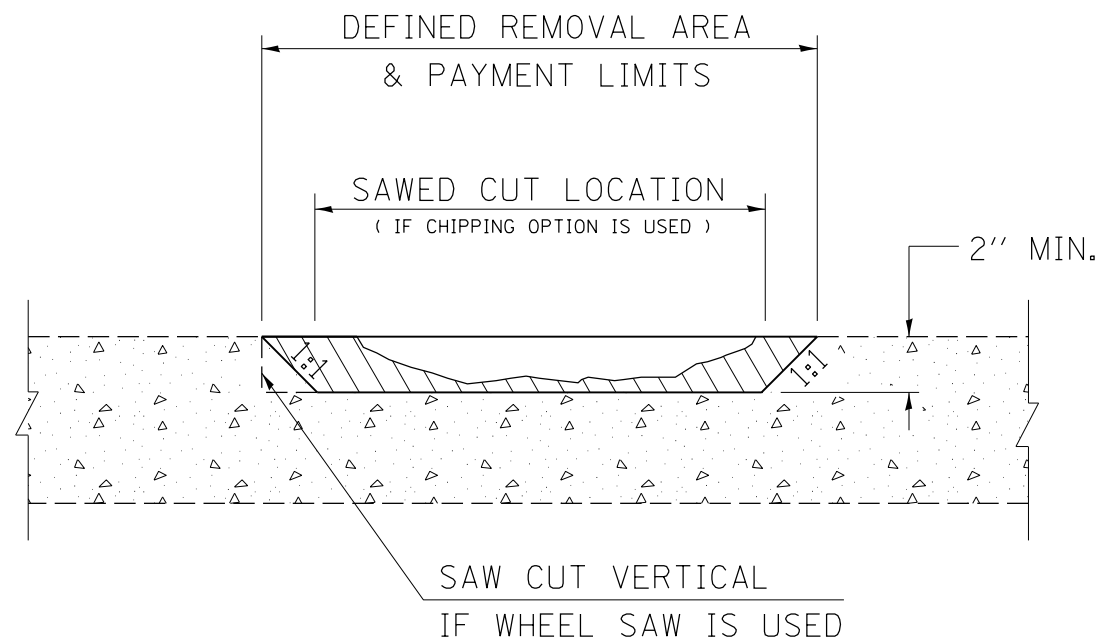
F.A.I. RTE.	SECTION	COUNTY	TOTAL SHEETS	SHEET NO.
64	D9 PATCH 2021-2	JEFFERSON	10	8
CONTRACT NO. 78807				
ILLINOIS FED. AID PROJECT				

DETAILS OF HOT-MIX ASPHALT PATCHING-PARTIAL DEPTH



PLAN

* LIMITS OF PARTIAL DEPTH PATCHING AS DIRECTED BY THE ENGINEER.



SECTION A-A

NOTES:

THE DIAMETER OF THE MILLING MACHINE SHALL BE OF SUFFICIENT SIZE TO MAINTAIN THE 1:1 SIDE SLOPE.

THIS ITEM WILL BE PAID FOR AT THE CONTRACT UNIT PRICE PER SQUARE YARD FOR **PARTIAL DEPTH REMOVAL** OF THE TYPE AND DEPTH SPECIFIED; AND THE CONTRACT UNIT PRICE PER TON FOR **PARTIAL DEPTH PATCHING**. SAW CUTS TO BE INCLUDED IN THE COST OF PARTIAL DEPTH PATCH REMOVAL.

REVISIONS

DRAWN	10-4-91
REVISED	01-11-07
REVISED	3-26-08
REVISED	

STD. 9-91

MODEL: Default
FILE: hma12c_psd10planroom.dwg
I:\links\gov\PI\DOT\Documents\DOT_Offices\District 9\Projects\78807\CADD\Drawings\DOT_78807-Sheets.dwg

USER NAME = greenleesm	DESIGNED -	REVISED -	
	DRAWN -	REVISED -	
PLOT SCALE = 100.0000' / in.	CHECKED -	REVISED -	
PLOT DATE = 4/29/2020	DATE -	REVISED -	

**STATE OF ILLINOIS
DEPARTMENT OF TRANSPORTATION**

HMA PATCH-PARTIAL DEPTH DETAIL

SCALE: SHEET OF SHEETS STA. TO STA.

F.A.I. RTE.	SECTION	COUNTY	TOTAL SHEETS	SHEET NO.
64	D9 PATCH 2021-2	JEFFERSON	10	10
CONTRACT NO. 78807				
ILLINOIS FED. AID PROJECT				