

MAY 22 2020

Region 3 / District 4  
RECEIVED  
Local Roads

F.A.P. RTE.	SECTION	COUNTY	TOTAL SHEETS	SHEET NO.
398	19-00125-00-SW	TAZEWELL	21	1
		ILLINOIS	CONTRACT NO. 89768	

INDEX OF SHEETS

07-31-2020 LETTING ITEM 059

- 1 COVER SHEET
- 2 GENERAL NOTES, HIGHWAY STANDARDS, AND COMMITMENTS
- 3 SUMMARY OF QUANTITIES
- 4 TYPICAL SECTIONS
- 5 SCHEDULES OF QUANTITIES
- 6 ALIGNMENT, TIES & BENCHMARKS
- 7 REMOVAL PLANS
- 8-9 PLAN & PROFILE SHEETS
- 10 EROSION CONTROL PLANS
- 11-12 DRAINAGE PLAN & PROFILE SHEETS
- 13 CURB RAMP DETAILS
- 14 ENTRANCE DETAIL
- 15-18 DETAILS
- 19-21 CROSS SECTIONS

STATE OF ILLINOIS  
DEPARTMENT OF TRANSPORTATION

DIVISION OF HIGHWAYS

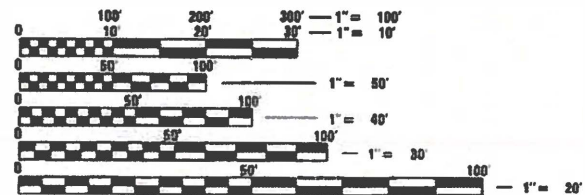
**PROPOSED  
HIGHWAY PLANS**

FAP 398  
SECTION: 19-00125-00-SW  
FEDERAL PROJECT No. 74U4(092)  
SAFE ROUTES TO SCHOOL IMPROVEMENTS  
MAIN STREET MULTI-USE PATH  
SRTS #: CRTS-019-4006  
CITY OF WASHINGTON  
TAZEWELL COUNTY  
C-94-063-19  
WASHINGTON TWP. SECTIONS 11, 14



*Eric Therkildsen*  
5/20/2020  
ERIC S. THERKILDSEN, P.E.  
LICENSED PROFESSIONAL ENGINEER  
ILLINOIS NO. 062-044857 EXPIRES 11-30-21

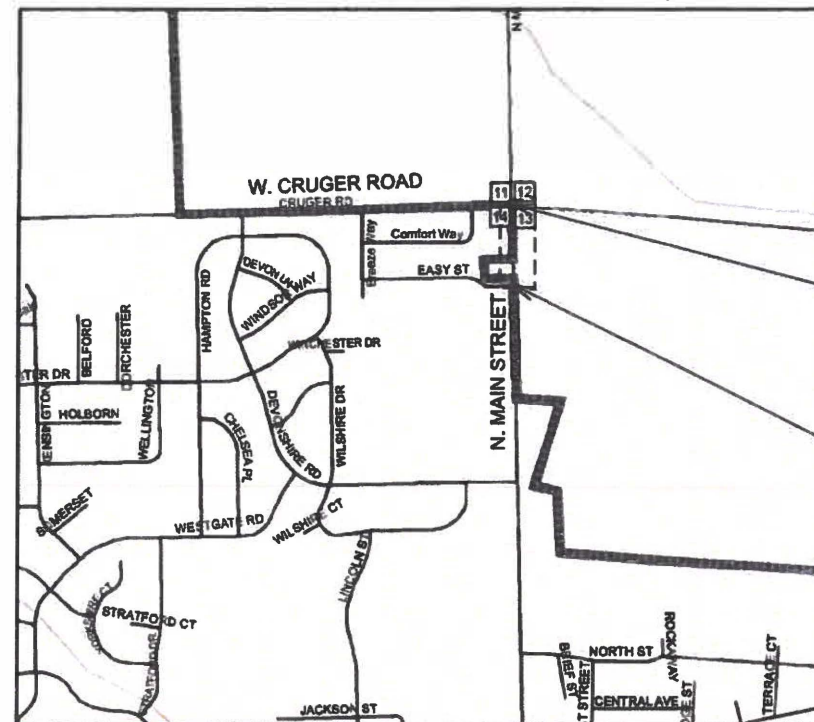
N  
LOCATION MAP  
NOT TO SCALE



FULL SIZE PLANS HAVE BEEN PREPARED USING STANDARD ENGINEERING SCALES. REDUCED SIZED PLANS WILL NOT CONFORM TO STANDARD SCALING. IN MAKING MEASUREMENTS ON REDUCED PLANS, THE ABOVE SCALES MAY BE USED.

J.U.L.I.E.  
JOINT UTILITY LOCATION INFORMATION FOR EXCAVATION  
1-800-892-0123  
OR 811

PLANNING AND DEVELOPEMENT DIRECTOR:  
JON OLIPHANT, 309-444-1135  
TERRA PROJECT MANAGER: ERIC THERKILDSEN, P.E. 309-999-0123  
CATALOG NO. 035827-00  
CONTRACT NO. 89768



ROAD	FROM STA.	TO STA.	LENGTH (FT)	LENGTH (MI)
MAIN STREET PATH	399 + 53.78	406 + 69.37	715.6	0.14
NET AND GROSS LENGTH OF IMPROVEMENT			715.6	0.14

MAIN ST.  
BEGIN IMPROVEMENTS  
STA. 406 + 69.37

MAIN ST.  
END IMPROVEMENTS  
STA. 399 + 53.78



**TERRA**  
ENGINEERING LTD.  
401 Main Street, Suite 1560  
Peoria, IL 61602  
(309) 899-0123



**DESCRIPTION OF PROJECT**  
THIS PROJECT INCLUDES CONSTRUCTION OF A SHARED-USE PATH ALONG MAIN ST FROM CRUGER ROAD TO EASY ST. THE PROPOSED WORK INCLUDES RECONSTRUCTION OF THE SOUTHWEST CORNER OF CRUGER ROAD AND MAIN STREET AND CONSTRUCTION OF A CLOSED DRAINAGE SYSTEM.

APPROVED *[Signature]* May 20, 2020  
CITY ENGINEER  
LOCAL AGENCY OFFICIAL

PASSED *[Signature]* MAY 22 2020  
Terry Lassie, P.E.  
DISTRICT FOUR ENGINEER OF  
LOCAL ROADS & STREETS

RELEASING FOR BID BASED ON LIMITED REVIEW  
*[Signature]* 05-22 2020  
REGION THREE ENGINEER  
STATE OF ILLINOIS  
DEPARTMENT OF TRANSPORTATION

**PRINTED BY THE AUTHORITY  
OF THE STATE OF ILLINOIS**

## GENERAL NOTES

### ENVIRONMENTAL REVIEWS

PRIOR TO THE USE OF ANY PROPOSED BORROW AREA, USE AREAS (TEMPORARY ACCESS ROADS, DETOURS, RUN-AROUNDS, ETC.) AND/OR WASTE AREAS, THE CONTRACTOR SHALL FILE THE REQUIRED ENVIRONMENTAL RESOURCE REQUEST SURVEYS ACCORDING TO THE SECTION 107.22 OF THE STANDARD SPECIFICATIONS. THESE SURVEYS ARE REQUIRED IN ORDER FOR THE DEPARTMENT TO CONDUCT CULTURAL AND BIOLOGICAL RESOURCE SURVEYS FOR THE PROPOSED SITE. THE REQUIRED ENVIRONMENTAL RESOURCE DOCUMENTATION SHALL INCLUDE THE FOLLOWING:

- BDE FORM 2289 (CULTURAL AND NATURAL RESOURCES REVIEW OF BORROW AREA)

- BDE FORM 2290 (WASTE/USE AREA REVIEW)

- A LOCATION MAP SHOWING THE SIZE LIMITS AND LOCATION OF THE USE AREA

- COLOR PHOTOGRAPHS DEPICTING THE USE AREA

- BORROW AREA ENTRY AGREEMENT FORM - D4 PI0101

PRIOR TO ANY WASTE MATERIALS BEING REMOVED FROM THE CONSTRUCTION SITE THE REQUIRED ENVIRONMENTAL RESOURCE SURVEYS SHALL BE OBTAINED AND FILED BY THE CONTRACTOR. EXCESS WASTE PRODUCTS REMOVED FROM THE CONSTRUCTION SITE SHALL BE DISPOSED OF AS REQUIRED IN SECTION 202.03 OF THE STANDARD SPECIFICATIONS. ANY PROTRUDING METAL BARS SHALL BE REMOVED PRIOR TO THE DISPOSAL OF BROKEN CONCRETE AT APPROVED DISPOSAL SITES. PLEASE NOTE THAT A MINIMUM OF FOUR WEEKS SHALL BE ALLOWED FOR THE DISTRICT TO OBTAIN THE REQUIRED WASTE SITE ENVIRONMENTAL CLEARANCES AND SIX WEEKS FOR THE REQUIRED BORROW SITE ENVIRONMENTAL CLEARANCES.

### PROPERTY OWNER ACCESS REQUIREMENT

ACCESS MUST BE MAINTAINED TO ALL EXISTING PROPERTIES DURING CONSTRUCTION PER ARTICAL 107.09 UNLESS ARRANGEMENTS ARE MADE IN WRITING BY THE CONTRACTOR WITH THE PROPERTY OWNERS WITH A COPY TO THE ENGINEER FOR SHORT-TERM CLOSURES.

### PLAN ELEVATIONS - U. S. G. S. MEAN SEA LEVEL DATUM

ALL ELEVATIONS SHOWN ON THE PANS ARE ESTABLISHED FROM U.S.G.S. MEAN SEA LEVEL DATUM.

### AVAILABILITY OF ELECTRONIC FILES

MICROSTATION AND GEOPAK FILES OF THIS PROJECT WILL BE MADE AVAILABLE TO THE CONTRACTOR AFTER CONTRACT AWARD. IF THERE IS A CONFLICT BETWEEN THE ELECTRONIC FILES AND THE PRINTED CONTRACT PLANS AND DOCUMENTS, THE PRINTED CONTRACT PLANS AND DOCUMENTS SHALL TAKE PRECEDENCE OVER THE ELECTRONIC FILES. THE CONTRACTOR SHALL ACCEPT ALL RISK ASSOCIATED WITH USING THE ELECTRONIC FILES AND SHALL HOLD THE DEPARTMENT HARMLESS FOR ANY ERRORS OR OMISSIONS IN THE ELECTRONIC FILES AND THE DATA CONTAINED THEREIN. ERRORS OR DELAYS RESULTING FROM THE USE OF THE ELECTRONIC FILES BY THE CONTRACTOR SHALL NOT RESULT IN AN EXTENSION OF TIME FOR ANY INTERIM OR FINAL COMPLETION DATE OR SHALL NOT BE CONSIDERED CAUSE FOR ADDITIONAL COMPENSATION. THE CONTRACTOR SHALL NOT USE, SHARE, OR DISTRIBUTE THESE ELECTRONIC FILES EXCEPT FOR THE PURPOSE OF CONSTRUCTING THIS CONTRACT. ANY CLAIMS BY THIRD PARTIES DUE TO USE OR ERRORS SHALL BE THE RESPONSIBILITY OF THE CONTRACTOR. THE CONTRACTOR SHALL INCLUDE THIS DISCLAIMER WITH THE TRANSFER OF THESE ELECTRONIC FILES TO ANY OTHER PARTIES AND SHALL INCLUDE APPROPRIATE LANGUAGE BINDING THEM TO SIMILAR RESPONSIBILITIES.

### ORDERING LENGTH CONFIRMATION - DRAINAGE ITEMS

THE CONTRACTOR SHALL CONSULT WITH THE ENGINEER IN REGARD TO THE EXACT LENGTH OF THE BOX/PIPE CULVERTS, STORM SEWERS, AND/OR PIPE DRAINS REQUIRED PRIOR TO ORDERING THESE ITEMS.

### EXISTING DRAINAGE PIPES CONNECTED TO NEW STRUCTURES

IN ACCORDANCE WITH SECTION 602 OF THE STANDARD SPECIFICATIONS, THE CONNECTING OF EXISTING DRAIN TILES, PIPE CULVERTS, OR STORM SEWERS TO THE PROPOSED DRAINAGE SYSTEM STRUCTURES WILL NOT BE PAID FOR SEPARATELY BUT SHALL BE CONSIDERED AS INCLUDED IN THE PAY ITEMS PROVIDED.

### TRANSITION PAYMENT METHOD-NEW/OLD CONSTRUCTION

TEN FEET (10 FT.) (3 M) TRANSITIONS SHALL BE USED TO MATCH PROPOSED ITEMS OF WORK TO EXISTING ITEMS IN THE FIELD UNLESS OTHERWISE SHOWN. THE TRANSITION SHALL BE PAID FOR AT THE CONTRACT UNIT PRICE FOR THE PROPOSED ITEM OF WORK SPECIFIED.

### SIGNING

SIGN LOCATIONS MAY VARY FROM THE STATIONS SHOWN ON THE PLANS IN ACCORDANCE WITH DIRECTIONS FROM THE ENGINEER AT THE TIME OF CONSTRUCTION. SIGN LOCATIONS MAY BE ADJUSTED IN THE FIELD TO AVOID ANY FOUND UTILITIES. ALL WOOD POST LOCATIONS SHALL BE VERIFIED WITH THE BUREAU OF OPERATIONS, TRAFFIC SECTION, BEFORE INSTALLATION.

### JOINTS

CONCRETE CONTRACTION JOINTS IN THE PROPOSED RECREATIONAL PATH SHALL BE SAW CUT, NOT TOOLED.

## GENERAL NOTES, CONTINUED

### RATES OF APPLICATION

THE FOLLOWING RATES OF APPLICATION HAVE BEEN ASSUMED IN CALCULATING PLAN QUANTITIES:

NITROGEN FERTILIZER NUTRIENT	90 LBS/ACRE
PHOSPHORUS FERTILIZER NUTRIENT	90 LBS/ACRE
POTASSIUM FERTILIZER NUTRIENT	90 LBS/ACRE

### CLEAR DISTANCE TO OBSTRUCTIONS

2-FT MINIMUM CLEARANCE TO OBSTRUCTIONS, INCLUDING UTILITY POLES, SHALL BE PROVIDED FROM THE PATH EDGE.

### POLYMERIZED BITUMINOUS MATERIALS (TACK COAT) RATES

SURFACE TYPE	RESIDUAL RATE
MILLED (HMA OR PCC)	0.08 LB/SF
EXISTING PAVEMENT	0.08 LB/SF
FOG COAT (BETWEEN LIFTS)	0.08 LB/SF

### HOT-MIX ASPHALT MIXTURE REQUIREMENTS

LOCATION: PCC BASE COURSE WIDENING WITH HMA SURFACET ADJACENT TO PROPOSED CURB AND GUTTER RECONSTRUCTION ON MAIN STREET, 2-FT WIDE STRIP	
MIXTURE USES:	SURF CRS, 2"
AC/PG:	PG 64-22
DESIGN AIR VOIDS:	4.0% @ N=50
MIXTURE COMPOSITION: (GRADATION MIXTURE)	IL 9.5
FRICITION AGGREGATE:	MIX C
MIXTURE WEIGHT:	112 LB/SQ YD/IN
QUALITY MANAGEMENT:	QC/QA

### NOTES:

- 1) INDIVIDUAL LIFT THICKNESS OF EACH MIX TYPE WILL BE NO LESS THAN 3 TIMES NOMINAL MAXIMUM AGGREGATE SIZE AND NO MORE THAN 6 TIMES NOMINAL MAXIMUM.
- 2) FOR DESIGN PURPOSES, MIXTURE WEIGHT FOR ALL MIXES IN DETERMINED TO BE 112.0 LB/SQ YD/IN, UNLESS OTHERWISE NOTED.
- 3) SUBLOT SIZES FOR PFP AND QCP MIXES WILL BE 1,000 TONS, UNLESS OTHERWISE AGREED TO BY THE ENGINEER AND THE PAVING CONTRACTOR.

### TRAFFIC CONTROL

TRAFFIC CONTROL SHALL BE IN ACCORDANCE WITH THE IDOT STANDARD SPECIFICATIONS FOR ROAD AND BRIDGE CONSTRUCTION. ONE LANE IN EACH DIRECTION WITH A MINIMUM WIDTH OF 10' IS REQUIRED AT ALL TIMES, UNLESS STANDARD 701501-06 IS IN PLACE. TRAFFIC SHALL NOT BE DIRECTED OR DIVERTED ONTO THE EXISTING PAVED SHOULDER.

## HIGHWAY STANDARDS

000001-07	STANDARD SYMBOLS, ABBREVIATIONS, AND PATTERNS
001006	DECIMAL OF AN INCH AND A FOOT
280001-07	TEMPORARY EROSION CONTROL SYSTEMS
420001-09	PAVEMENT JOINTS
420106-06	36' (10.8 m) JOINTED PCC PAVEMENT
424001-11	PERPENDICULAR CURB RAMPS FOR SIDEWALKS
542401-03	METAL FLARED END SECTION FOR PIPE CULVERTS
602301-04	INLET, TYPE A
602401-06	PRECAST MANHOLE TYPE A 4' (1.22 m) DIAMETER
604001-05	FRAME AND LIDS, TYPE 1
606001-07	CONCRETE CURB TYPE B AND COMBINATION CONCRETE CURB AND GUTTER
701001-02	OFF-RD OPERATIONS, 2L, 2W, MORE THAN 15' AWAY
701006-05	OFF-RD OPERATIONS, 2L, 2W, 15' TO 24' FROM PAVEMENT EDGE
701501-06	URBAN LANE CLOSURE, 2L, 2W UNDIVIDED
701801-06	SIDEWALK, CORNER OR CROSSWALK CLOSURE
701901-08	TRAFFIC CONTROL DEVICES
720001-01	SIGN PANEL MOUNTING DETAILS
720006-04	SIGN PANEL ERECTION DETAILS
720011-01	METAL POSTS FOR SIGNS, MARKERS AND DELINEATORS
729001-01	APPLICATIONS OF TYPE A AND B METAL POSTS (FOR SIGNS & MARKERS)

## DISTRICT FOUR DETAILS

602001-D4	INLETS, TYPE G-1
602021-D4	INLET-MANHOLE, TYPE G-1
604301-D4	TYPE 37 GRATE

## CITY OF WASHINGTON DETAILS

CITY STANDARD NO. 012	COMBINATION CONCRETE CURB & GUTTER
CITY STANDARD NO. 013	COMBINATION CONCRETE CURB & GUTTER REPLACEMENT WITH CURBLINE SIDEWALK
CITY STANDARD NO. 023	STORM SEWER & SUMP DRAIN LINE TRENCH DETAILS

## COMMITMENT

AFFECTED MAILBOXES ON THE WEST SIDE OF MAIN STREET BETWEEN CRUGER ROAD AND EASY STREET SHALL REMAIN ON THE WEST SIDE OF THE ROADWAY, ADJACENT TO THE CORRESPONDING DRIVEWAYS.

MODEL: D:\sht\FILE NAME: I:\PROJECTS\2013\05\_COW\_SHTS-MAIN\T-SPRING\Drawings\CD\TRANSPORTATION\CADD\_SHEETS\0417103-SHT-MAIN-GENERAL-NOTES.dgn

	USER NAME	DESIGNED	REVISED	<b>STATE OF ILLINOIS DEPARTMENT OF TRANSPORTATION</b>	<b>STANDARDS, GENERAL NOTES, AND COMMITMENTS</b>				F.A.P RTE.	SECTION	COUNTY	TOTAL SHEETS	SHEET NO.
	FILENAME	DRAWN	REVISED		398	19-00125-00-SW	TAZEWELL	21	2				
	PLOT SCALE	CHECKED	REVISED		WESTERN AVE RECONSTRUCTION				CONTRACT NO.	89768			
	PLOT DATE	DATE	REVISED		SCALE: NTS	SHEET 1	OF 1	SHEETS	STA.	TO STA.	ILLINOIS	FED. AID PROJECT	

### SUMMARY OF QUANTITIES

ITEM NUMBER	ITEM	UNIT	QUANTITY
20200100	EARTH EXCAVATION	CU YD	355
20800150	TRENCH BACKFILL	CU YD	64
21101615	TOPSOIL FURNISH AND PLACE, 4"	SQ YD	544
25000400	NITROGEN FERTILIZER NUTRIENT	POUND	10
25000500	PHOSPHORUS FERTILIZER NUTRIENT	POUND	10
25000600	POTASSIUM FERTILIZER NUTRIENT	POUND	10
25200110	SODDING, SALT TOLERANT	SQ YD	544
28000250	TEMPORARY EROSION CONTROL SEEDING	POUND	11
28000500	INLET AND PIPE PROTECTION	EACH	6
35101100	AGGREGATE BASE COURSE, TYPE A 12"	SQ YD	426
35101600	AGGREGATE BASE COURSE, TYPE B 4"	SQ YD	428
35102000	AGGREGATE BASE COURSE, TYPE B 8"	SQ YD	271
35400510	PORTLAND CEMENT CONCRETE BASE COURSE WIDENING 11"	SQ YD	135
40600295	POLYMERIZED BITUMINOUS MATERIALS (TACK COAT)	POUND	98
40604050	HOT-MIX ASPHALT SURFACE COURSE, IL-9.5, MIX "C", N50	TON	16
42000301	PORTLAND CEMENT CONCRETE PAVEMENT 8" (JOINTED)	SQ YD	50

ITEM NUMBER	ITEM	UNIT	QUANTITY
42300200	PORTLAND CEMENT CONCRETE DRIVEWAY PAVEMENT, 6 INC	SQ YD	271
42400200	PORTLAND CEMENT CONCRETE SIDEWALK 5 INCH	SQ FT	3845
42400800	DETECTABLE WARNINGS	SQ FT	88
44000100	PAVEMENT REMOVAL	SQ YD	472
44000200	DRIVEWAY PAVEMENT REMOVAL	SQ YD	153
44000500	COMBINATION CURB AND GUTTER REMOVAL	FOOT	283
44000600	SIDEWALK REMOVAL	SQ FT	288
50105220	PIPE CULVERT REMOVAL	FOOT	118
54261712	STEEL FLARED END SECTIONS 12"	EACH	2
60218400	MANHOLES, TYPE A, 4'-DIAMETER, TYPE 1 FRAME, CLOSED LI	EACH	2
60603800	COMBINATION CONCRETE CURB AND GUTTER, TYPE B-6.12	FOOT	55
60605000	COMBINATION CONCRETE CURB AND GUTTER, TYPE B-6.24	FOOT	565
67100100	MOBILIZATION	L SUM	1
* 72000100	SIGN PANEL - TYPE 1	SQ FT	23
72400310	REMOVE SIGN PANEL - TYPE 1	SQ FT	1
72400500	RELOCATE SIGN PANEL ASSEMBLY - TYPE A	EACH	2

ITEM NUMBER	ITEM	UNIT	QUANTITY
* 72900100	METAL POST - TYPE A	FOOT	20
* 78000200	THERMOPLASTIC PAVEMENT MARKING - LINE 4"	FOOT	425
* 78000650	THERMOPLASTIC PAVEMENT MARKING - LINE 24"	FOOT	124
* 78005180	EPOXY PAVEMENT MARKING - LINE 24"	FOOT	140
550A0040	STORM SEWERS, CLASS A, TYPE 1 10"	FOOT	29
550A0050	STORM SEWERS, CLASS A, TYPE 1 12"	FOOT	421
550B0040	STORM SEWERS, CLASS B, TYPE 1 10"	FOOT	37
X0327301	RELOCATE EXISTING MAILBOX	EACH	4
X0327998	BOLLARD TO BE RELOCATED	EACH	1
X6020082	INLETS, TYPE G-1	EACH	1
X6021814	INLET-MANHOLE, TYPE G-1, 4' DIAMETER	EACH	3
X6023508	INLETS, TYPE A, WITH SPECIAL FRAME AND GRATE	EACH	2
X7010216	TRAFFIC CONTROL AND PROTECTION, (SPECIAL)	L SUM	1
Z0013798	CONSTRUCTION LAYOUT	L SUM	1

\* SPECIALTY ITEM

MODEL: D:\p404\19000125\19000125-00-SW\19000125-00-SW\SHT-MAIN-SQ.dwg



USER NAME = CcainC	DESIGNED - CC	REVISED -
FILENAME = D:\17103-SHT-MAIN-SQ.dwg	DRAWN - AE	REVISED -
PLOT SCALE = 40 0000 / in.	CHECKED - ET	REVISED -
PLOT DATE = 5/21/2020 8:30:49 AM	DATE -	REVISED -

**STATE OF ILLINOIS  
DEPARTMENT OF TRANSPORTATION**

**SUMMARY OF QUANTITIES**

SCALE: NTS SHEET 1 OF 1 SHEETS STA. TO STA.

F.A.P. RTE. 398	SECTION 19-00125-00-SW	COUNTY TAZEWELL	TOTAL SHEETS 21	SHEET NO. 3
WESTERN AVE RECONSTRUCTION		CONTRACT NO. 89768		
ILLINOIS FED. AID PROJECT				



EARTHWORK				
LOCATION	20200100	SUITABLE EXCAVATION ADJUSTED FOR SHRINKAGE (25%)	EMBANKMENT	EARTH BALANCE WASTE (+) OR SHORTAGE (-)
	EARTH EXCAVATION	CU YD		
STATION TO STATION	CU YD	CU YD	CU YD	CU YD
400-00 TO 403+00	115	86	104	-18
403-00 TO 406+32	240	180	102	78
<b>TOTAL</b>	<b>355</b>	<b>266</b>	<b>206</b>	<b>60</b>
<b>USE</b>	<b>355</b>	<b>270</b>	<b>210</b>	<b>60</b>

PAVEMENT							
FROM STATION	TO STATION	35101100	35400510	42000301	44000100	40600295	40604050
		AGGREGATE BASE COURSE, TYPE A 12"	PORTLAND CEMENT CONCRETE BASE COURSE WIDENING, 11"	PORTLAND CEMENT CONCRETE PAVEMENT, 8" (JOINTED)	PAVEMENT REMOVAL	POLYMERIZED BITUMINOUS MATERIALS (PRIME COAT)	HOT-MIX ASPHALT SURFACE COURSE, 1L-9.5, MIX "C", N50
		SQ YD	SQ YD	SQ YD	SQ YD	POUND	TON
SW CORNER MAIN/EASY		7.8	7.8		8.4	6	1
400+06.83	405+74.22	126.7	126.7			92	15
SW CORNER MAIN/CRUGER		49.8		49.8	463.1		
<b>TOTAL</b>		<b>184.3</b>	<b>134.5</b>	<b>49.8</b>	<b>471.5</b>	<b>98</b>	<b>16</b>
<b>USE</b>		<b>185</b>	<b>135</b>	<b>50</b>	<b>472</b>	<b>98</b>	<b>16</b>

INLET AND PIPE PROTECTION		
STRUCTURE NUMBER	STATION	28000500
		INLET AND PIPE PROTECTION EACH
S2	403+39.98	1
S3	400+93.13	1
S4	400+98.11	1
S7	404+48.30	1
S9	405+56.57	1
S10	405+72.12	1
<b>TOTAL</b>		<b>6</b>
<b>USE</b>		<b>6</b>

CURB AND GUTTER					
FROM	TO	35101100	44000500	60603800	60605000
		AGGREGATE BASE COURSE, TYPE A 12"	COMBINATION CURB AND GUTTER REM	COMBINATION CONCRETE CURB AND GUTTER, TYPE B 6.12	COMBINATION CONCRETE CURB AND GUTTER, TYPE B 6.24
		SQ YD	FOOT	FOOT	FOOT
SW CORNER MAIN/EASY		9.3	32.5	32.3	
NW CORNER MAIN/EASY		6.5	22.6	22.6	
400+58.99	401+02.11		43.1		
401+29.01	402+36.56		106.8		
SW CORNER MAIN/CRUGER			77.6		
400+29.01	406+22.25	217.4			546.6
<b>TOTAL</b>		<b>233.2</b>	<b>282.6</b>	<b>54.9</b>	<b>546.6</b>
<b>USE</b>		<b>234</b>	<b>283</b>	<b>55</b>	<b>547</b>

DRIVEWAYS			
STATION	35102000	42300200	44000200
	AGGREGATE BASE COURSE, TYPE B	PORTLAND CEMENT CONCRETE DRIVEWAY PAVEMENT, 6 INCH	DRIVEWAY PAVEMENT REMOVAL
	SQ YD	SQ YD	SQ YD
400+77.37	46.6	46.6	32.4
402+71.65	71	71	34.3
403+92.16	80.4	80.4	44.9
405+40.28	72.4	72.4	40.6
<b>TOTAL</b>	<b>270.4</b>	<b>270.4</b>	<b>152.2</b>
<b>USE</b>	<b>271</b>	<b>271</b>	<b>153</b>

SIDEWALK SCHEDULE					
LOCATION	FROM STATION	TO STATION	35101600	42400200	44000600
			AGGREGATE BASE COURSE, TYPE B 4"	PORTLAND CEMENT CONCRETE SIDEWALK 5 INCH	SIDEWALK REMOVAL
			SQ YD	SQ FT	SQ FT
SW CORNER EASY	399+53.77	399+72.41	28.1	253.3	202
NW CORNER EASY	400+11.70	400+63.36	49.9	449.3	85.2
BETWEEN DWYS	400+91.48	402+51.65	142.4	1281.5	
BETWEEN DWYS	402+91.65	403+72.95	72.3	650.4	
BETWEEN DWYS	404+11.37	405+20.31	96.8	871.5	
SW CORNER CRUGER	405+56.48	406+04.36	37.6	338.2	
<b>TOTAL</b>			<b>427.1</b>	<b>3844.2</b>	<b>287.2</b>
<b>USE</b>			<b>428</b>	<b>3845</b>	<b>288</b>

PIPE CULVERT REMOVAL		
FROM STA.	TO STA.	21101615
		PIPE AND CULVERT REMOVAL FOOT
400+61.35	400+94.97	33.6
402+75.55	402+87.04	29.5
403+78.01	404+06.82	28.8
405+27.81	405+53.21	25.5
<b>TOTAL</b>		<b>117.4</b>
<b>USE</b>		<b>118</b>

BOLLARDS AND MAILBOXES		
LOCATION	X0327998	X0327301
	BOLLARD TO BE RELOCATED	RELOCATE EXISTING MAILBOX
	EACH	EACH
SW CORNER MAIN/EASY	1	
STA. 405+59		1
STA. 404+10		1
STA. 404+12		1
STA. 402+96		1
<b>TOTAL</b>	<b>1</b>	<b>4</b>
<b>USE</b>	<b>1</b>	<b>4</b>

PAVEMENT MARKINGS				
FROM STATION	TO STATION	78000200	78000650	78005180
		THERMOPLASTIC PAVEMENT MARKINGS LINE 4"	THERMOPLASTIC PAVEMENT MARKINGS LINE 24"	EPOXY PAVEMENT MARKING LINE 24"
		FOOT	FOOT	FOOT
400+27.72	405+69.05	424.6		
MAIN/EASY INTERSECTION			124	
MAIN/CRUGER INTERSECTION				139.5
<b>TOTAL</b>		<b>424.6</b>	<b>124</b>	<b>139.5</b>
<b>USE</b>		<b>425</b>	<b>124</b>	<b>140</b>

CONTRACT LUMP SUM ITEMS			
	67100100	X7010216	Z0013798
	MOBILIZATION	TRAFFIC CONTROL AND PROTECTION (SPECIAL)	CONSTRUCTION LAYOUT
	L SUM	L SUM	L SUM
	1	1	1
<b>TOTAL</b>	<b>1</b>	<b>1</b>	<b>1</b>
<b>USE</b>	<b>1</b>	<b>1</b>	<b>1</b>

LANDSCAPING AND TEMPORARY EROSION							
FROM	TO	21101615	25000400	25000500	25000600	25200110	28000250
		TOPSOIL FURNISH AND PLACE 4"	NITROGEN FERTILIZER NUTRIENT	PHOSPHORUS FERTILIZER NUTRIENT	POTASSIUM FERTILIZER NUTRIENT	SODDING, SALT TOLERANT	TEMPORARY EROSION CONTROL SEEDING
		SQ YD	POUND	POUND	POUND	SQ YD	POUND
SW CORNER OF MAIN/EASY		11.9	0.2	0.2	0.2	11.9	0.2
EASY ST	400+77.37	36	0.7	0.7	0.7	36	0.7
400+77.37	402+71.65	173.7	3.2	3.2	3.2	173.7	3.6
402+71.65	403+92.16	115.3	2.1	2.1	2.1	115.3	2.4
403+92.16	405+40.28	161.4	3.0	3.0	3.0	161.4	3.3
405+40.28	CRUGER RD	45.6	0.8	0.8	0.8	45.6	0.9
<b>TOTAL</b>		<b>543.9</b>	<b>10.1</b>	<b>10.1</b>	<b>10.1</b>	<b>543.9</b>	<b>11.1</b>
<b>USE</b>		<b>544</b>	<b>11</b>	<b>11</b>	<b>11</b>	<b>544</b>	<b>12</b>

SIGNING SCHEDULE									
STATION	TYPE	SIZE	OFFSET	SIDE	72000100	72400500	72900100	72400310	72400311
					RELOCATE SIGN PANEL TYPE 1	RELOCATE SIGN PANEL ASSEMBLY - TYPE A	METAL POST TYPE A	REMOVE SIGN PANEL TYPE 1	REMOVE SIGN PANEL TYPE 2
			FT	LT / RT	SQ FT	EACH	FOOT	SQ FT	EACH
406+28	W11-15	30"x30"			6.25				
	W11-15P	24"x18"	112	LT	3		10		
	W16-9P	24"x12"			2				
405+72	SCHOOL SPEED LIMIT		5	RT		1			
402+08	SPEED LIMIT	24"x30"	6.5	RT		1			
	W11-15	30"x30"			6.25				
399+77	W11-15P	24"x18"	112	LT	3		10		
	W16-9P	24"x12"			2				
399+59	ENDS	TYPE 1						0.5	
	A	24"x30"							1
	A	24"x							1
<b>TOTAL</b>					<b>22.5</b>	<b>2</b>	<b>20</b>	<b>0.5</b>	<b>2</b>
<b>USE</b>					<b>23</b>	<b>2</b>	<b>20</b>	<b>1</b>	<b>2</b>

DETECTABLE WARNINGS	
LOCATION	42400800
	DETECTABLE WARNINGS SQ FT
SW CORNER MAIN/EASY	30.9
NW CORNER MAIN/EASY	21.7
SW CORNER MAIN/CRUGER	35
<b>TOTAL</b>	<b>87.6</b>
<b>USE</b>	<b>88</b>

NOTE  
SEE SHEET 11 FOR DRAINAGE STRUCTURE AND PIPE SCHEDULES.

MODEL: Default  
FILE NAME: \\P01RCS320-105-COW-SRTE-MAIN-ST-printing\design\CADD\TRANSPORTATION\CADD-SHEETS\0417103-SHT-MAIN-SCHEDULES.dgn

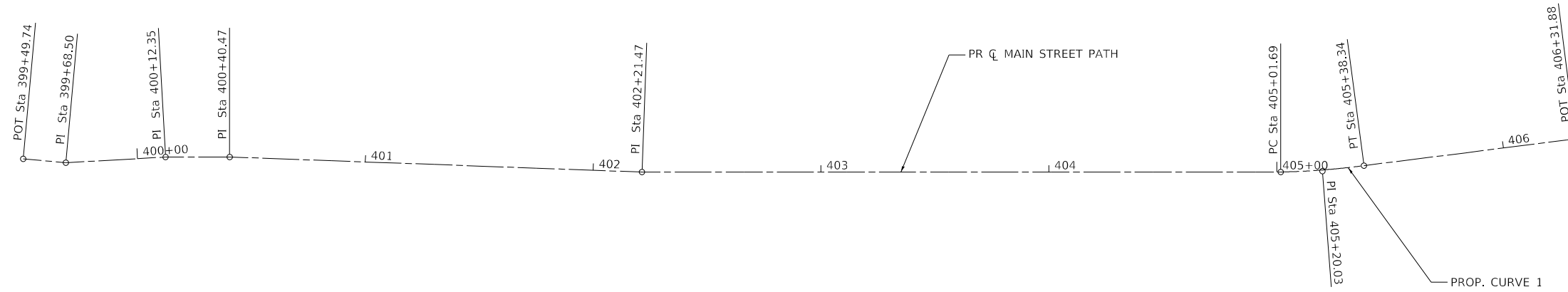
	USER NAME = ColinC	DESIGNED - CC	REVISED -
	FILENAME = D417103-SHT-MAIN-SCHEDULES.dgn	DRAWN - AE	REVISED -
	PLOT SCALE = 40.0000" / 1"	CHECKED - ET	REVISED -
	PLOT DATE = 5/21/2020 8:33:57 AM	DATE -	REVISED -

STATE OF ILLINOIS  
DEPARTMENT OF TRANSPORTATION

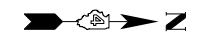
SCHEDULES OF QUANTITIES

SCALE: NTS SHEET 1 OF 1 SHEETS STA. TO STA.

F.A.P. RTE.	SECTION	COUNTY	TOTAL SHEETS	SHEET NO.
398	19-00125-00-SW	TAZEWELL	21	5
WESTERN AVE RECONSTRUCTION		CONTRACT NO.	89768	
		ILLINOIS FED. AID PROJECT		

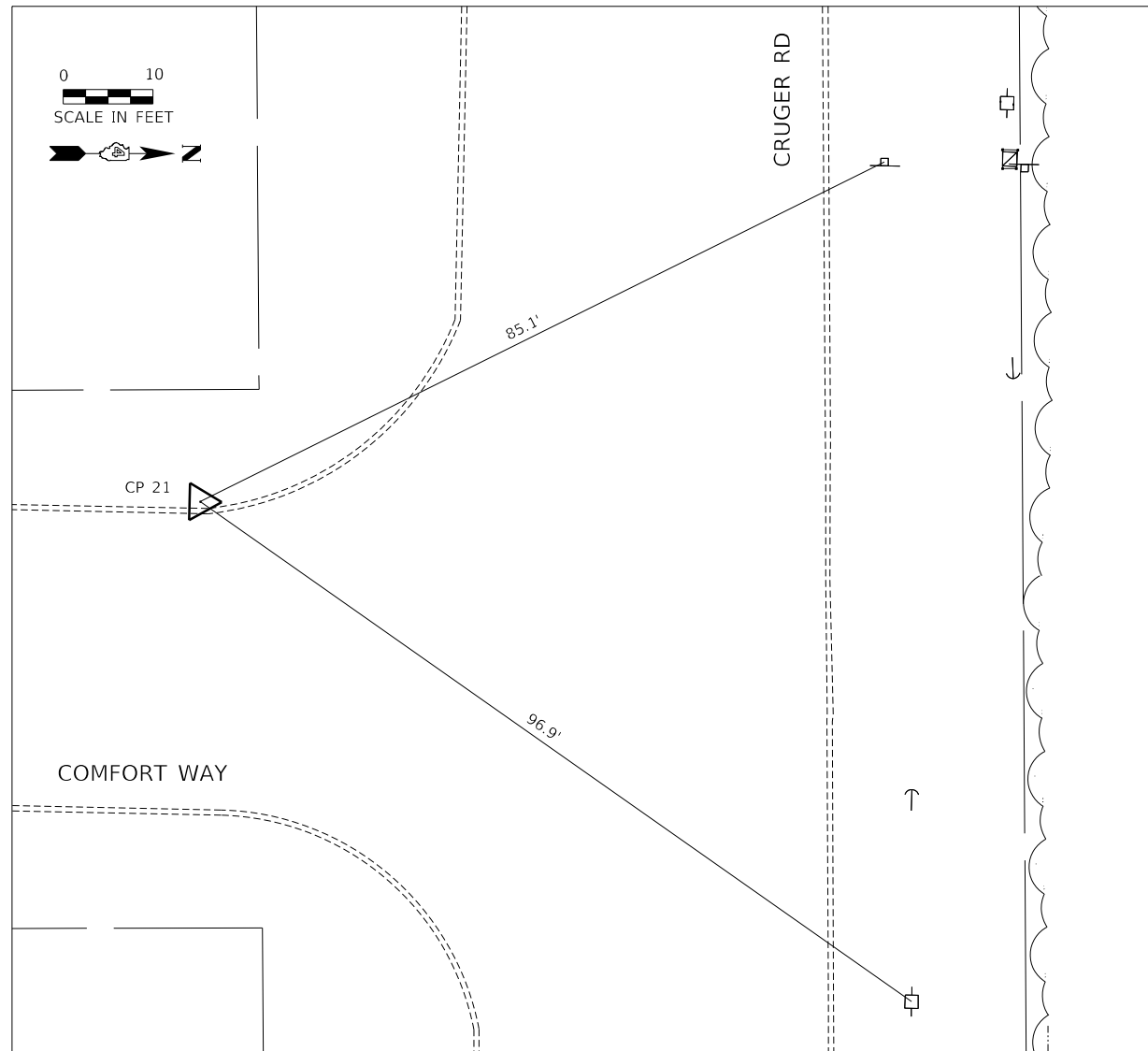


PROP. CURVE 1  
 PI STA. = 405+20.03  
 $\Delta = 6^\circ 18' 22''$  (LT)  
 $D = 17^\circ 12' 21''$   
 $R = 333.00'$   
 $T = 18.34'$   
 $L = 36.65'$   
 $E = 0.50'$   
 $e = N/A$   
 $T.R. = N/A$   
 $S.E. RUN = N/A$   
 $P.C. STA. = 405+01.69$   
 $P.T. STA. = 405+38.34$



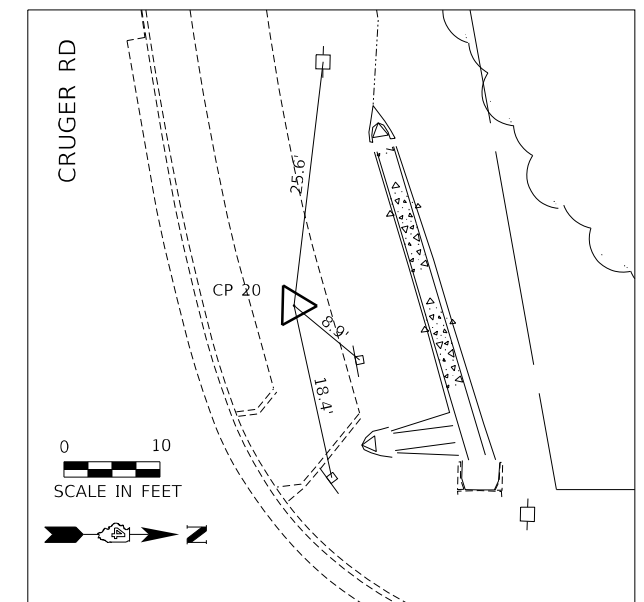
### CONTROL POINTS AND TEMPORARY BENCHMARKS

CP #	N	E	ELEV	DESC.
20	1477190.8250	2506990.9460	789.88	MAG NAIL IN SIDEWALK, NORTHWEST QUADRANT MAIN & CRUGER
21	1477095.3150	2506717.2330	790.36	CHISTLED 'X', TOP OF CURB @ RADIUS RETURN, SOUTHWEST QUADRANT CRUGER & COMFORT WAY



### MAIN STREET PATH

CONTROL POINT	STATION	COORDINATES		CURVE DATA	
		NORTHING	EASTING	PARAMETER	1
P.O.T	399+49.74	1476466.5150	2507035.3795	CIRCULAR CURVES	
P.O.T	399+68.50	1476485.2326	2507036.6742	R	333.0000
P.O.T	400+12.35	1476528.9475	2507032.2870	*C	6°18'21.63"
P.O.T	400+40.47	1476557.0620	2507032.6756	TC	18.3436
P.O.T	402+21.47	1476738.0406	2507035.4641	L	36.6502
T.C.	405+01.69	1477018.1971	2507029.5856	L.C.	36.6317
P.I.	405+20.03	1477036.5241	2507028.8052		
C.T.	405+38.34	1477054.6545	2507026.0165		
P.O.T	406+31.88	1477147.1878	2507012.3301		



MODEL: D:\p1\11...  
 FILE NAME: C:\PROG\REVIEWS\DESIGN\TRANSPORTATION\CADD SHEETS\0417103-SHT-MAIN-ALIGNMENT.dgn

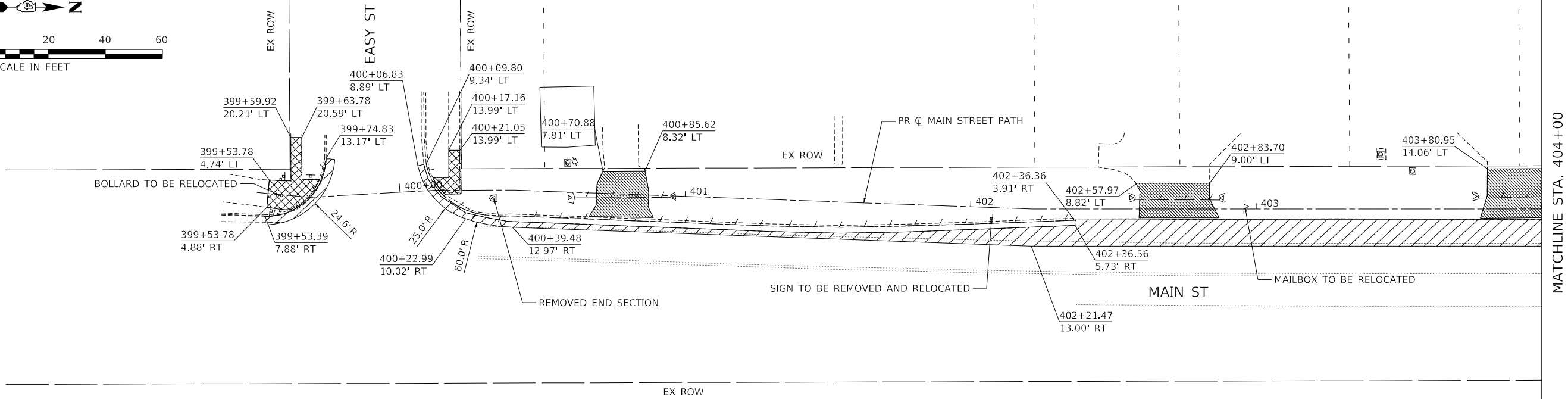
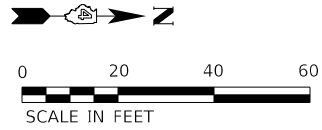
	USER NAME = Colhc	DESIGNED = CC	REVISED =
	FILENAME = D:\17103-SHT-MAIN-ALIGNMENT.dgn	DRAWN = AE	REVISED =
	PLOT SCALE = 30.0001 * / in.	CHECKED = ET	REVISED =
	PLOT DATE = 5/18/2020 11:48:20 AM	DATE =	REVISED =

STATE OF ILLINOIS  
 DEPARTMENT OF TRANSPORTATION

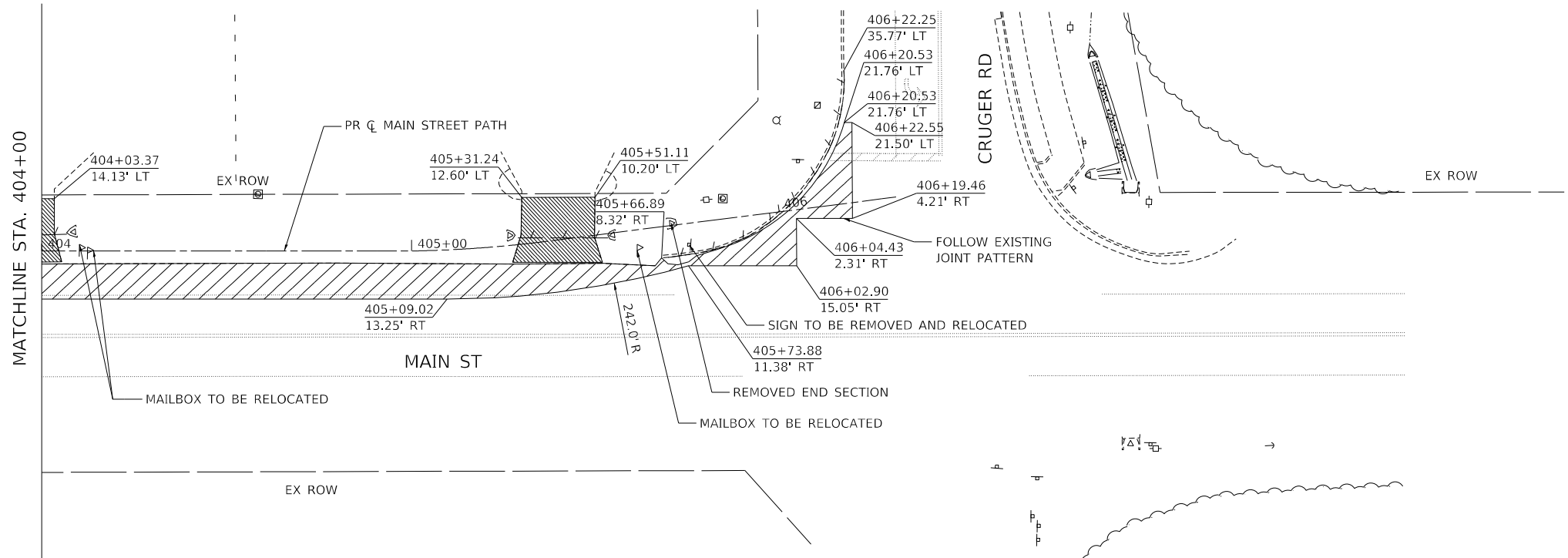
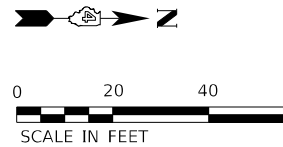
ALIGNMENTS, BENCHMARKS AND TIES  
 MAIN ST SHARED-USE PATH

SCALE: 1"=30' SHEET 1 OF 1 SHEETS STA. TO STA.

F.A.P. RTE.	SECTION	COUNTY	TOTAL SHEETS	SHEET NO.
398	19-00125-00-SW	TAZEWELL	21	6
WESTERN AVE RECONSTRUCTION		CONTRACT NO. 89768		
ILLINOIS		FED. AID PROJECT		



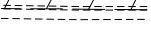
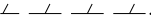



MATCHLINE STA. 404+00



MATCHLINE STA. 404+00

**LEGEND**

-  PAVEMENT REMOVAL
-  SIDEWALK REMOVAL
-  CURB AND GUTTER REMOVAL
-  CULVERT REMOVAL
-  DRIVEWAY PAVEMENT REMOVAL

MODEL: D:\p1\TERRA\PROJECTS\2020\19-00125-00-SW\SR15-MAIN-ST\SPRINT\Drawings\CD\TRANSPORTATION\CD\ SHEET\DWG17\19-00125-SHT-MAIN-REM-001.dwg



USER NAME	= ColinC	DESIGNED	- CC	REVISED	-
FILENAME	= D:\17103-SHT-MAIN-REM-001.dwg	DRAWN	- AE	REVISED	-
PLOT SCALE	= 20.0000 * / in.	CHECKED	- ET	REVISED	-
PLOT DATE	= 5/18/2020 11:48:30 AM	DATE	-	REVISED	-

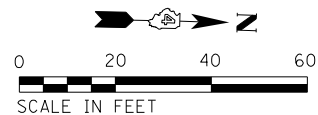
**STATE OF ILLINOIS  
DEPARTMENT OF TRANSPORTATION**

**REMOVAL PLAN  
MAIN ST SHARED-USE PATH**

SCALE: 1"=20' SHEET 1 OF 1 SHEETS STA. TO STA.

F.A.P. RTE.	SECTION	COUNTY	TOTAL SHEETS	SHEET NO.
398	19-00125-00-SW	TAZEWELL	21	7
WESTERN AVE RECONSTRUCTION		CONTRACT NO. 89768		
		ILLINOIS	FED. AID PROJECT	





PR SIGNS  
 W11-15 30" x 30"  
 W11-15P 24" x 18"  
 W16-9P 24" x 12"

LOCATE SIGN POST 100' WEST  
 OF EASY STREET STOP BAR,  
 3' SOUTH OF FACE OF CURB,  
 FACING WEST



**NOTES**

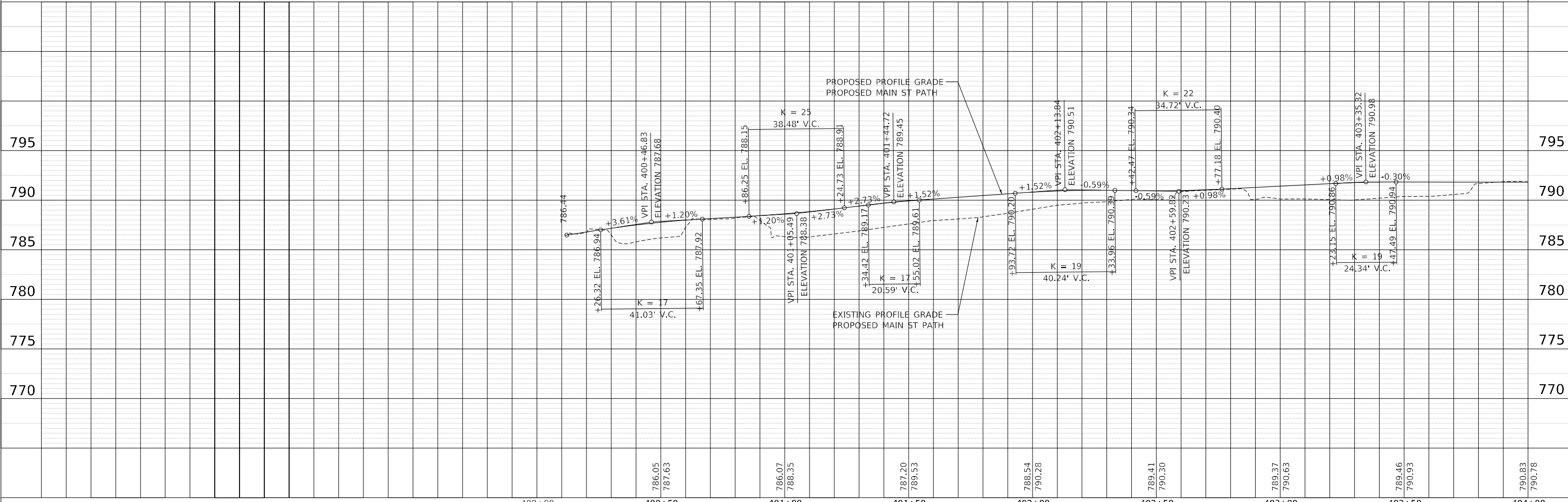
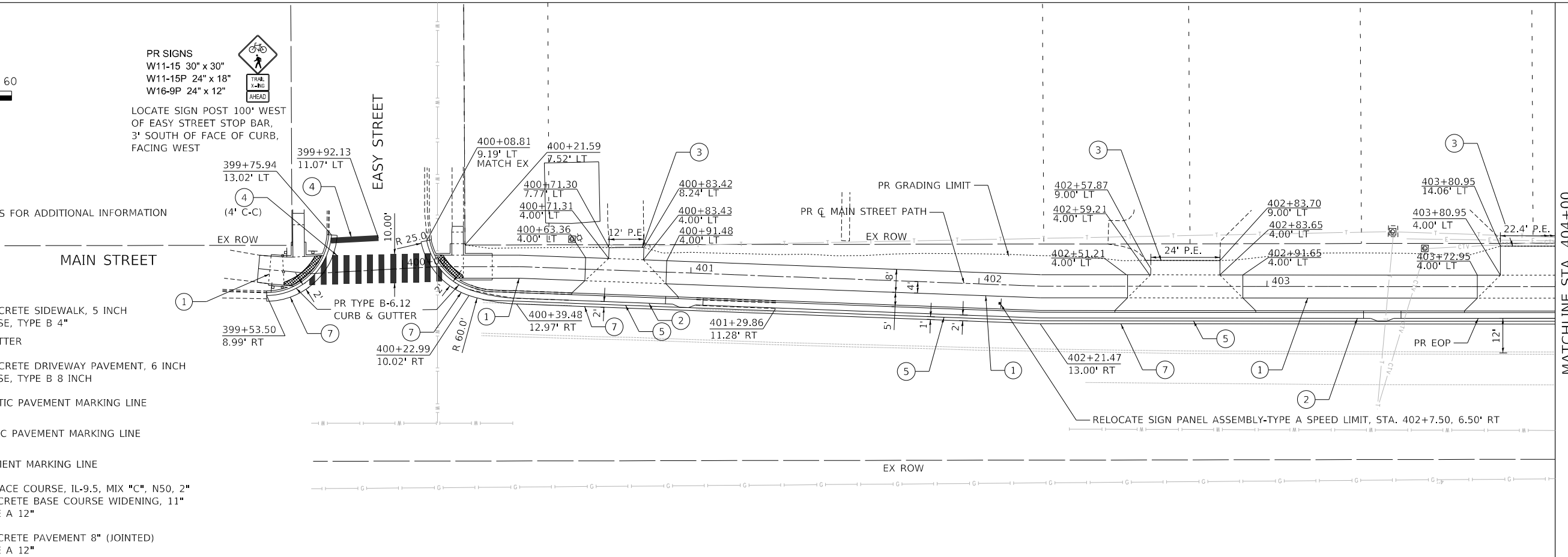
- SEE CURB RAMP DETAILS FOR ADDITIONAL INFORMATION

**LEGEND**

- PR PORTLAND CEMENT CONCRETE SIDEWALK, 5 INCH  
PR AGGREGATE BASE COURSE, TYPE B 4"
- PR TYPE B-6.24 CURB & GUTTER
- PR PORTLAND CEMENT CONCRETE DRIVEWAY PAVEMENT, 6 INCH  
PR AGGREGATE BASE COURSE, TYPE B 8 INCH
- PR 24" WHITE THERMOPLASTIC PAVEMENT MARKING LINE
- PR 4" WHITE THERMOPLASTIC PAVEMENT MARKING LINE
- PR 24" WHITE EPOXY PAVEMENT MARKING LINE
- PR HOT-MIX ALSPHALT SURFACE COURSE, IL-9.5, MIX "C", N50, 2"  
PR PORTLAND CEMENT CONCRETE BASE COURSE WIDENING, 11"  
PR AGG BASE COURSE, TYPE A 12"
- PR PORTLAND CEMENT CONCRETE PAVEMENT 8" (JOINTED)  
PR AGG BASE COURSE, TYPE A 12"

DATE	
BY	
SUBMITTED	
PLOTTED	
ALIGNMENT CHECKED	
GRADING CHECKED	
CONTRACT NO.	
PROJECT NAME	
FILE NAME	
NO.	

DATE	
BY	
SUBMITTED	
PLOTTED	
GRADING CHECKED	
STRUCTURE NOTATION	
NO.	

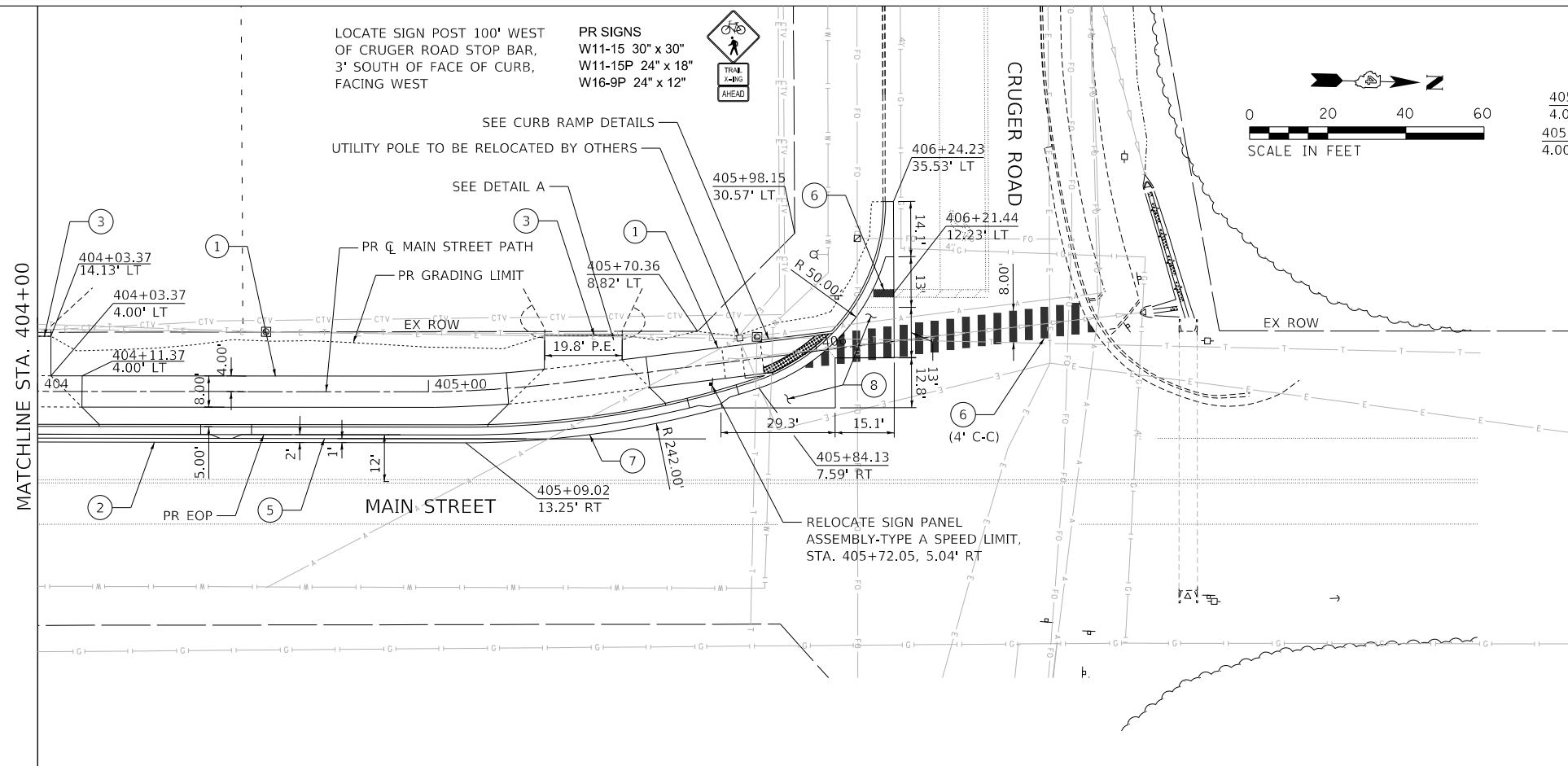


	USER NAME = ColmC	DESIGNED - CC	REVISED -	<b>STATE OF ILLINOIS</b> <b>DEPARTMENT OF TRANSPORTATION</b>	<b>PLAN &amp; PROFILE</b> <b>MAIN ST SHARED-USE PATH</b>	F.A.P. RTE. = 398	SECTION = 19-00125-00-SW	COUNTY = TAZEWELL	TOTAL SHEETS = 21	SHEET NO. = 8
	FILENAME = D417103-SHT-MAIN-PLPR-001.dgn	DRAWN - AE	REVISED -			SCALE: 1"=20'	SHEET 1 OF 2 SHEETS STA.	TO STA. 404+00	CONTRACT NO. 89768	
	PLOT SCALE = 20.0000' / in.	CHECKED - ET	REVISED -							
	PLOT DATE = 5/18/2020 11:49:09 AM	DATE = 5/12/20	REVISED -							



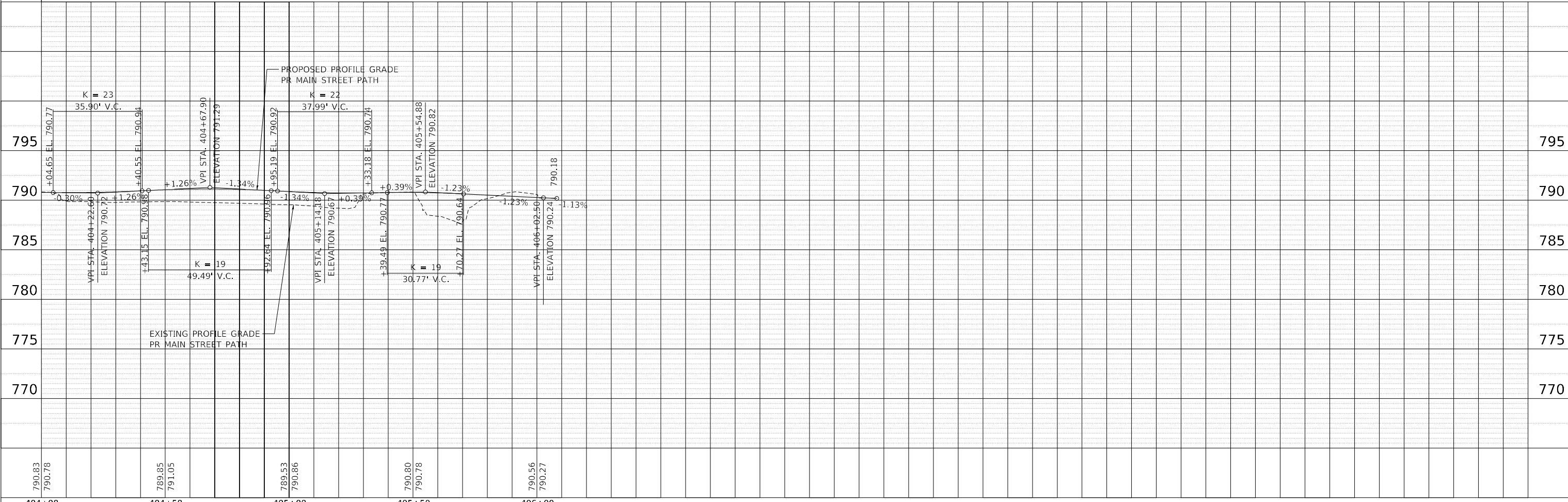
DATE	
BY	
SUBMITTED	
PLANNED	
DESIGNED	
CHECKED	
NOTED	
NO.	

DATE	
BY	
SUBMITTED	
PLANNED	
DESIGNED	
CHECKED	
NOTED	
NO.	



**LEGEND**

- ① PR PORTLAND CEMENT CONCRETE SIDEWALK, 5 INCH  
PR AGGREGATE BASE COURSE, TYPE B 4"
- ② PR TYPE B-6.24 CURB & GUTTER
- ③ PR PORTLAND CEMENT CONCRETE DRIVEWAY PAVEMENT, 6 INCH  
PR AGGREGATE BASE COURSE, TYPE B 8 INCH
- ④ PR 24" WHITE THERMOPLASTIC PAVEMENT MARKING LINE
- ⑤ PR 4" WHITE THERMOPLASTIC PAVEMENT MARKING LINE
- ⑥ PR 24" WHITE EPOXY PAVEMENT MARKING LINE
- ⑦ PR HOT-MIX ALSPHALT SURFACE COURSE, IL-9.5, MIX "C", N50, 2"  
PR PORTLAND CEMENT CONCRETE BASE COURSE WIDENING, 11"  
PR AGG BASE COURSE, TYPE A 12"
- ⑧ PR PORTLAND CEMENT CONCRETE PAVEMENT 8" (JOINTED)  
PR AGG BASE COURSE, TYPE A 12"



790.83 790.78	789.85 791.05	789.53 790.86	790.80 790.78	790.56 790.27
404+00	404+50	405+00	405+50	406+00



USER NAME = ColimC	DESIGNED = CC	REVISED =
FILENAME = D417103-SHT-MAIN-PLPR-002.dgn	DRAWN = AE	REVISED =
PLOT SCALE = 20.0000' / in.	CHECKED = ET	REVISED =
PLOT DATE = 5/18/2020 11:49:32 AM	DATE = 5/12/20	REVISED =

**STATE OF ILLINOIS  
DEPARTMENT OF TRANSPORTATION**

<b>PLAN &amp; PROFILE MAIN ST SHARED-USE PATH</b>	
SCALE: 1"=20'	SHEET 2 OF 2 SHEETS STA. 404+00 TO STA.

F.A.P. RTE.	SECTION	COUNTY	TOTAL SHEETS	SHEET NO.
398	19-00125-00-SW	TAZEWELL	21	9
CONTRACT NO. 89768				
ILLINOIS FED. AID PROJECT				



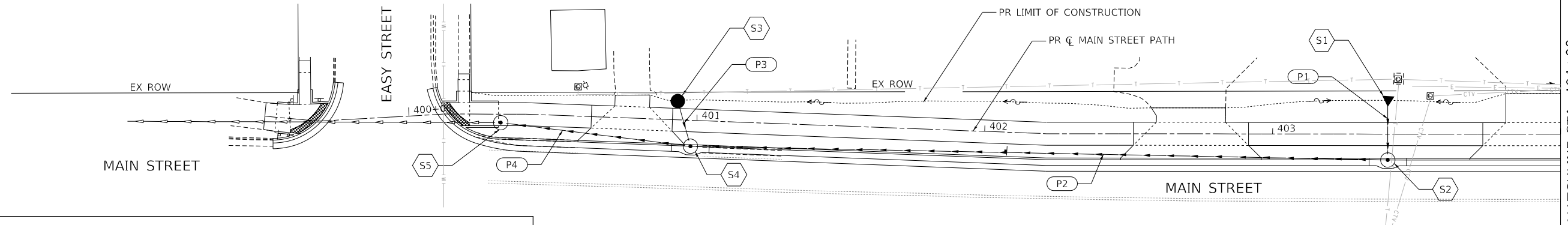
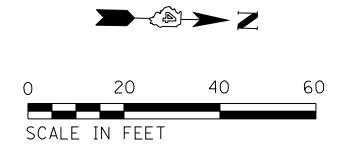
DATE: \_\_\_\_\_  
 BY: \_\_\_\_\_  
 SURVEYED: \_\_\_\_\_  
 PLOTTED: \_\_\_\_\_  
 ALIGNED: \_\_\_\_\_  
 CHECKED: \_\_\_\_\_  
 CADD FILE NAME: \_\_\_\_\_  
 NO. \_\_\_\_\_

DATE: \_\_\_\_\_  
 BY: \_\_\_\_\_  
 SURVEYED: \_\_\_\_\_  
 PLOTTED: \_\_\_\_\_  
 GRADES CHECKED: \_\_\_\_\_  
 STRUCTURE NOTATION: \_\_\_\_\_  
 NO. \_\_\_\_\_

DRAINAGE STRUCTURE SCHEDULE

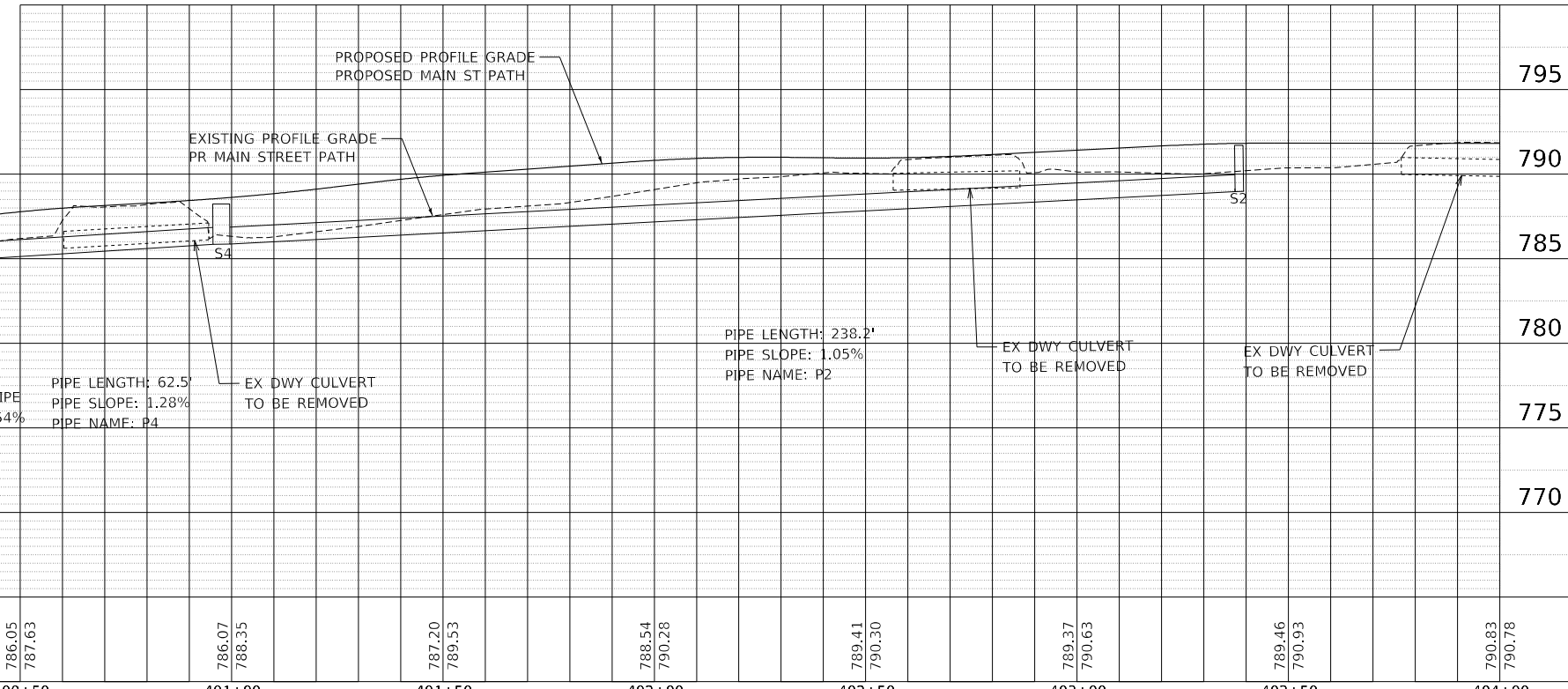
STRUCTURE NUMBER	STATION	OFFSET	RIM ELEV.	LOCATION OF STATION/OFFSET/RIM ELEV.	INVERT ELEVATIONS				54261712 STEEL FLARED END SECTIONS 12"	60218400 MANHOLES, TYPE A, 4' DIAMETER, TYPE 1 FRAME, CLOSED LID	X6023508 INLETS, TYPE A, WITH SPECIAL FRAME AND GRATE	X6021314 INLET-MANHO.E., TYPE G-1, 4' DIAMETER	X6020082 INLETS, TYPE G-1
					DIRECTION								
					N	S	E	W					
S1	403+40.31	11.91'	LT	-									
S2	403+39.98	9.00'	RT	790.82									
S3	400+93.13	6.49'	LT	787.98									
S4	400+98.11	9.00'	RT	788.30									
S5	400+31.83	2.96'	RT	787.08									
S6	404+49.94	12.14'	LT	-									
S7	404+48.30	9.00'	RT	790.91									
S8	405+71.69	0.57'	LT	790.61									
S9	405+56.57	6.94'	LT	789.65									
S10	405+72.12	7.57'	RT	790.41									
TOTAL:													

\*SEE IDOT DISTRICT 4 STANDARD 602001-04 OR 602021-04 FOR CONTROL POINT LOCATION  
 \*\*RIM ELEVATION FOR TYPE 37 GRATE REFERS TO TOP OF LOWER GRATE (WATER ENTRY) LOCATION



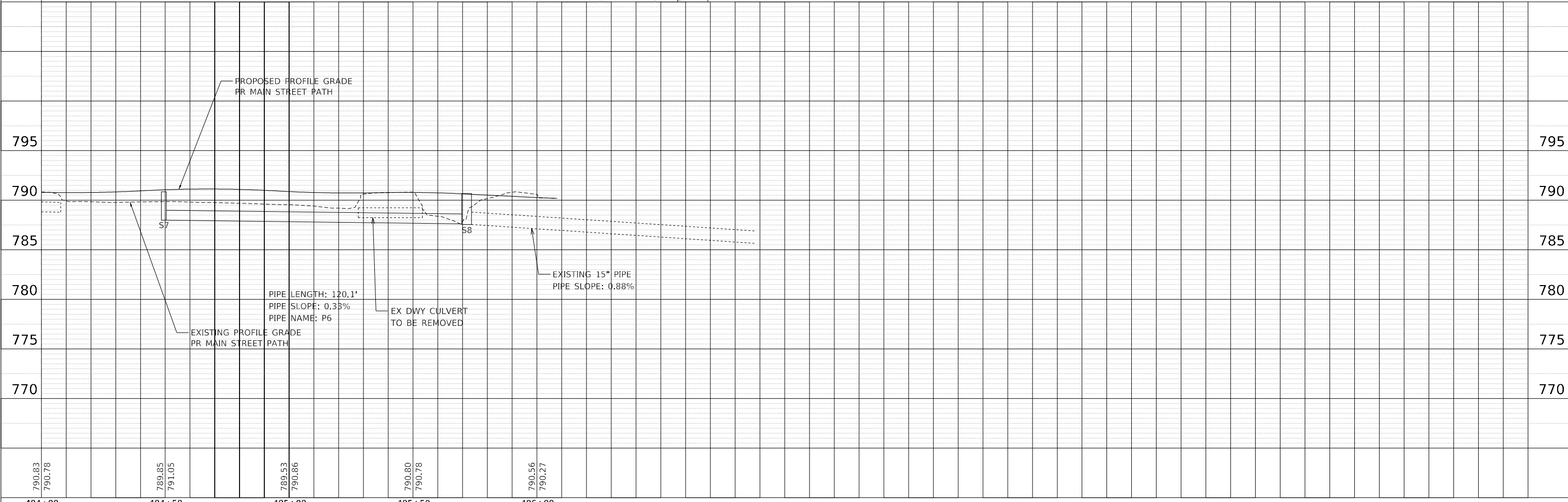
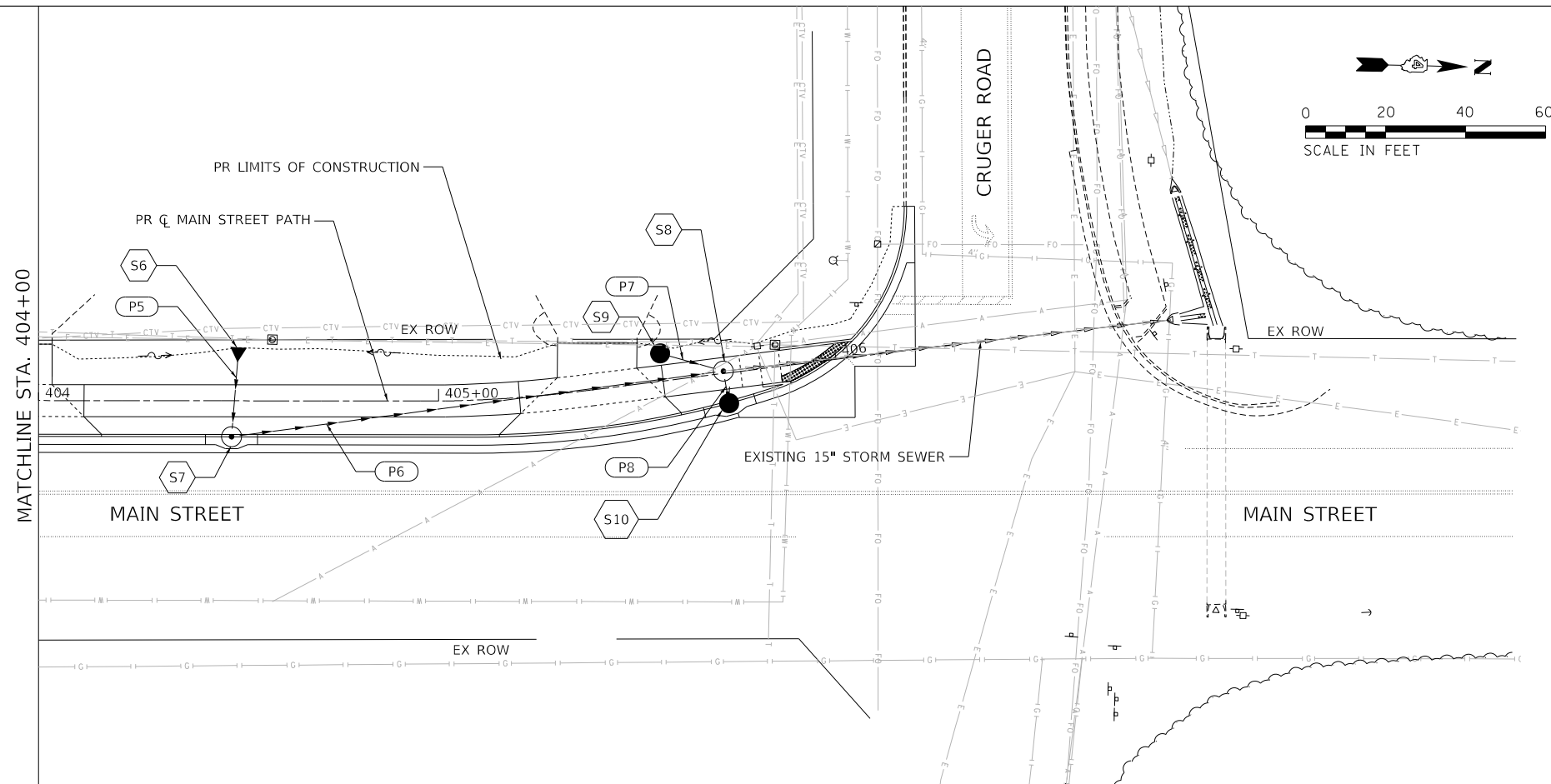
PIPE SCHEDULE

PIPE NUMBER	FROM STRUCTURE	UPSTREAM INVERT	SLOPE	TO STRUCTURE	DOWNSTREAM INVERT	550A0040	550A0050	550B0040	20800150
						STORM SEWERS, CLASS A, TYPE 1 10"	STORM SEWERS, CLASS A, TYPE 1 12"	STORM SEWERS, CLASS B, TYPE 1 10"	TRENCH BACKFILL
						FOOT	FOOT	FOOT	CU YD
P1	S1	789.43	7.94%	S2	788.00			18	2
P2	S2	788.10	1.05%	S4	785.60		238.2		31
P3	S3	785.84	6.83%	S4	785.00	12.3			2
P4	S4	785.60	1.28%	S5	784.80		62.5		8
P5	S6	789.13	6.24%	S7	788.00			18.1	2
P6	S7	788.00	0.33%	S8	787.60		120.1		16
P7	S9	788.00	3.23%	S8	787.80	12.4			2
P8	S10	788.00	4.16%	S8	787.80	4.2			1
TOTAL:						28.9	420.8	36.1	64
USE:						29	421	37	64



PLAN	SUBMITTED	DATE
	PLOTTED	
	ALIGNMENT CHECKED	
	CONSTRUCTION CHECKED	
	CADD FILE NAME	
	NO.	

PROFILE	SURVEYED	DATE
	PLOTTED	
	GRADES CHECKED	
	STRUCTURE NOTATIONS CHECKED	
	NO.	



790.83 790.78	789.95 791.05	789.53 790.86	790.80 790.78	790.56 790.27
404+00	404+50	405+00	405+50	406+00



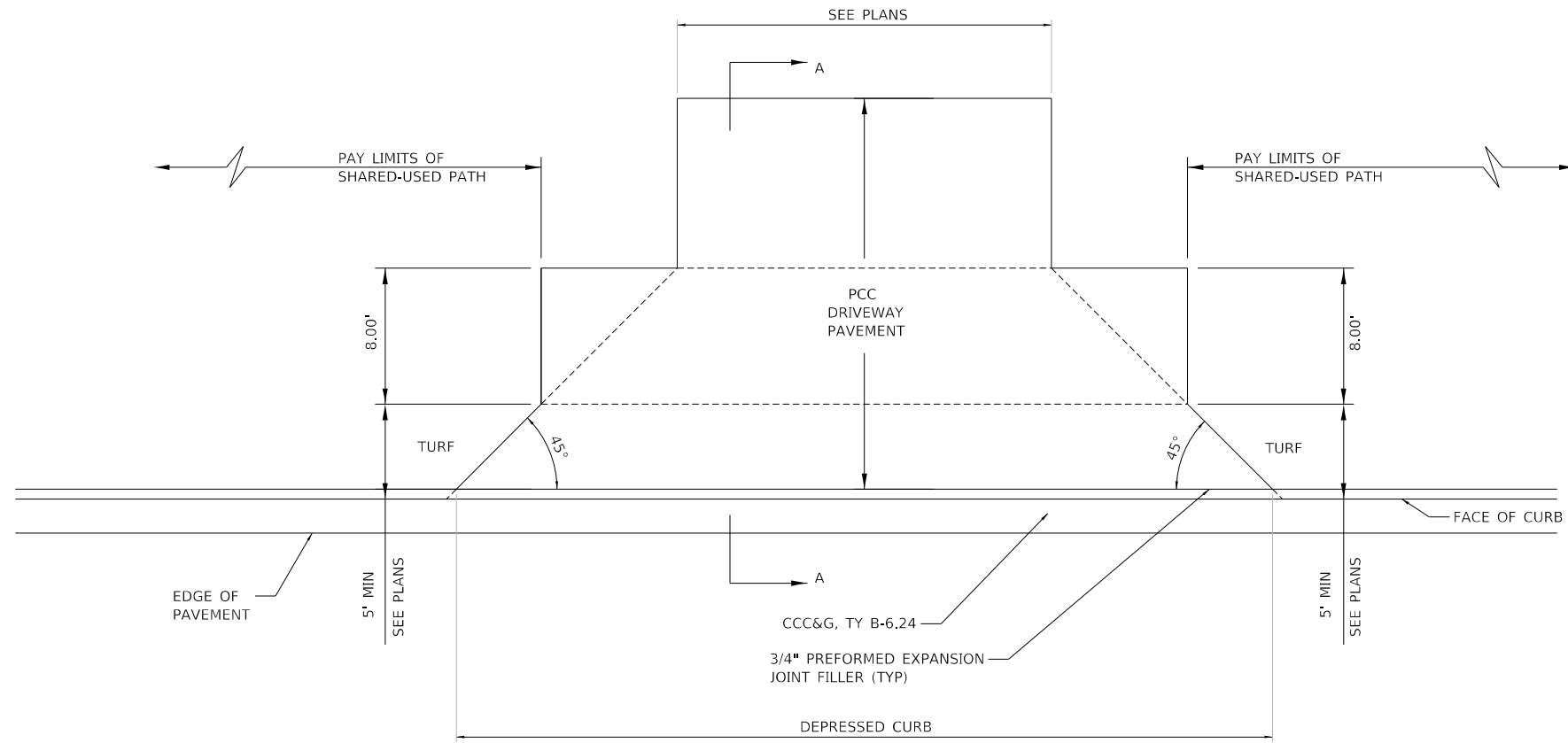
USER NAME	= ColmC	DESIGNED	- CC	REVISED	-
FILENAME	= D417103-SHT-MAIN-DRAIN02.dgn	DRAWN	- AE	REVISED	-
PLOT SCALE	= 20.0000' / in.	CHECKED	- JH	REVISED	-
PLOT DATE	= 5/18/2020 11:50:29 AM	DATE	- 5/12/20	REVISED	-

**STATE OF ILLINOIS  
DEPARTMENT OF TRANSPORTATION**

<b>DRAINAGE PLAN &amp; PROFILE MAIN ST SHARED-USE PATH</b>			
SCALE: 1"=20'	SHEET 2	OF 2 SHEETS	TO STA. 404+00

F.A.P. RTE.	SECTION	COUNTY	TOTAL SHEETS	SHEET NO.
398	19-00125-00-SW	TAZEWELL	21	12
CONTRACT NO. 89768				
ILLINOIS FED. AID PROJECT				

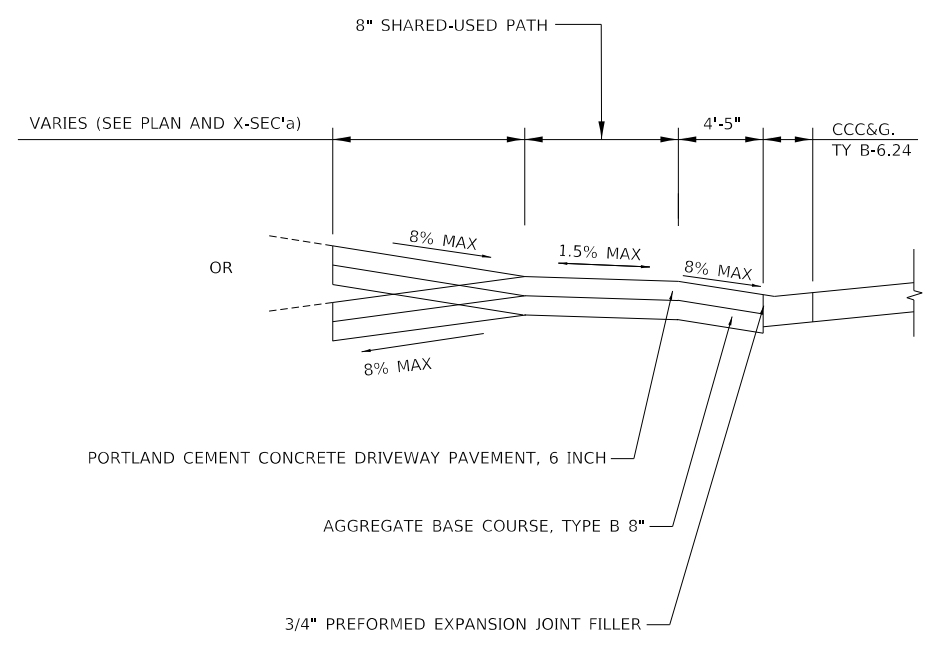




PLAN  
(NTS)

GENERAL NOTES

1. THE SHARED-USE PATH AREA LOCATED WITHIN THE PAY LIMITS OF PCC DRIVEWAY PAVEMENT WILL BE OF THE SAME THICKNESS AND CONSTRUCTION AS THE PCC DRIVEWAY PAVEMENT.
2. COMBINATION CONCRETE CURB & GUTTER SHALL BE DEPRESSED IN ACCORDANCE WITH STANDARD 606001.



ENTRANCE DETAIL

STA 400+77.36  
 STA 402+70.79  
 STA 403+92.16  
 STA 405+41.28

SECTION A-A  
(NTS)

MODEL: D:\a\17103-SHT-MAIN-DETAIL-ENTRANCE.dgn  
 FILE NAME: C:\PROJ\2020-105-COM-SRIS-MAIN-SHT-PRINTING\Drawings\CD\TRANSPORTATION\CADD-SHEET\17103-SHT-MAIN-DETAIL-ENTRANCE.dgn



USER NAME	ColinC	DESIGNED	CC	REVISED	-
FILENAME	D:\17103-SHT-MAIN-DETAIL-ENTRANCE.dgn	DRAWN	AE	REVISED	-
PLOT SCALE	5.0000' / in.	CHECKED	ET	REVISED	-
PLOT DATE	5/18/2020 11:51:00 AM	DATE	-	REVISED	-

STATE OF ILLINOIS  
 DEPARTMENT OF TRANSPORTATION

ENTRANCE DETAIL

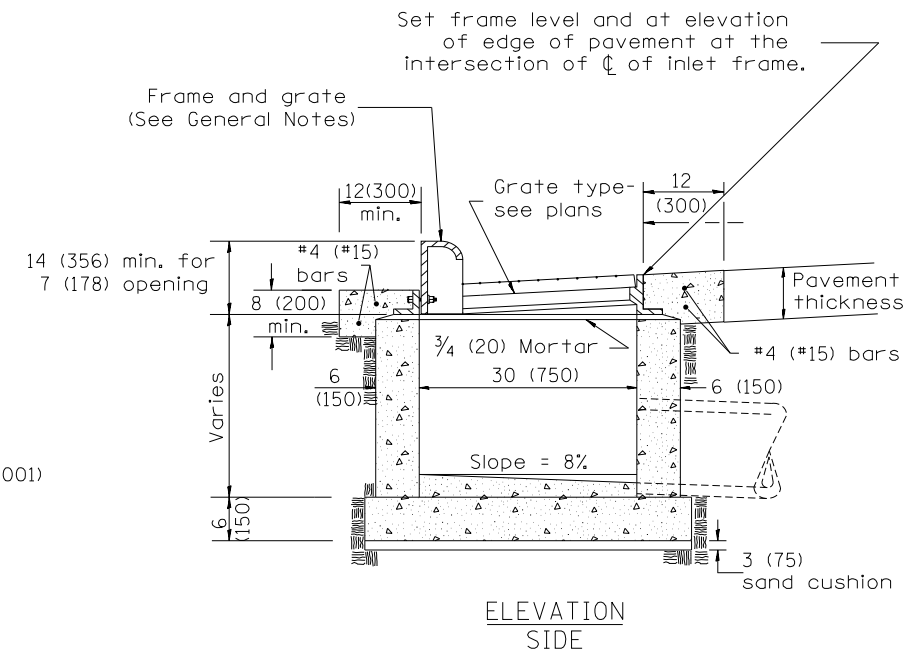
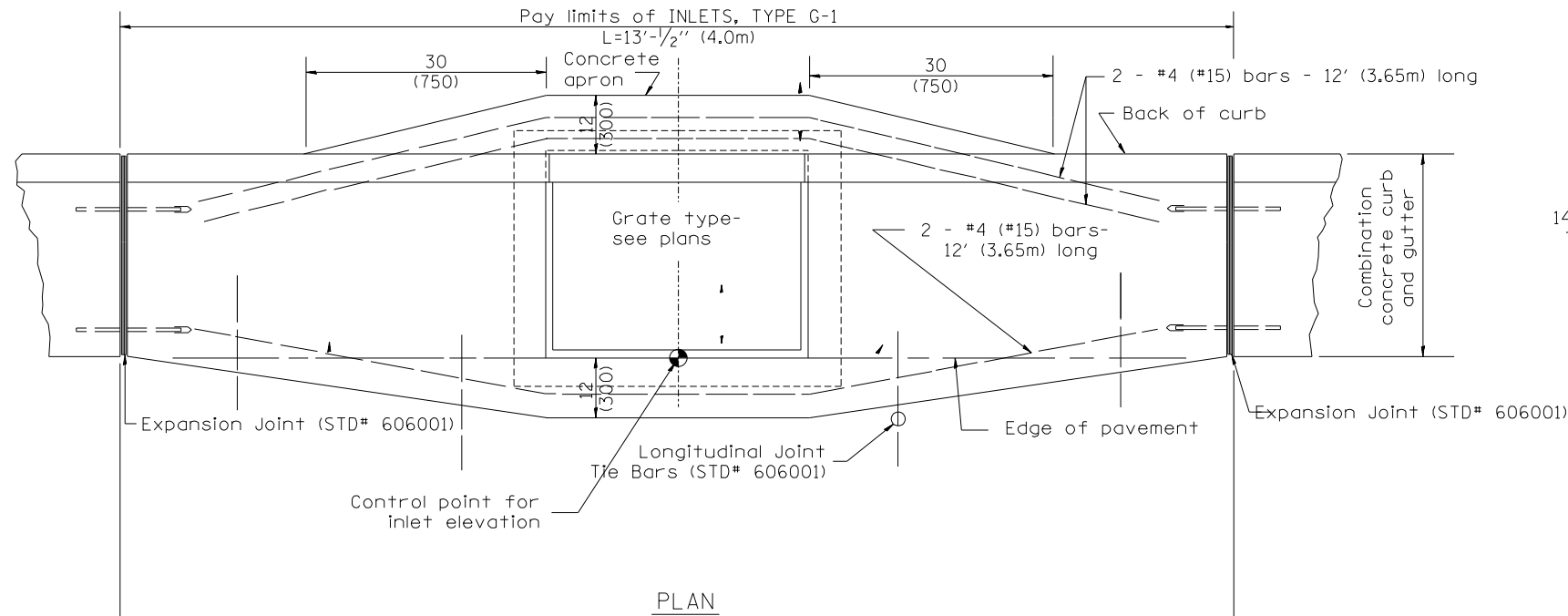
SCALE: NTS SHEET 1 OF 1 SHEETS STA. TO STA.

F.A.P. RTE.	SECTION	COUNTY	TOTAL SHEETS	SHEET NO.
398	19-00125-00-SW	TAZEWELL	21	14
WESTERN AVE RECONSTRUCTION			CONTRACT NO. 89768	
ILLINOIS FED. AID PROJECT				

DESIGNER NOTES:

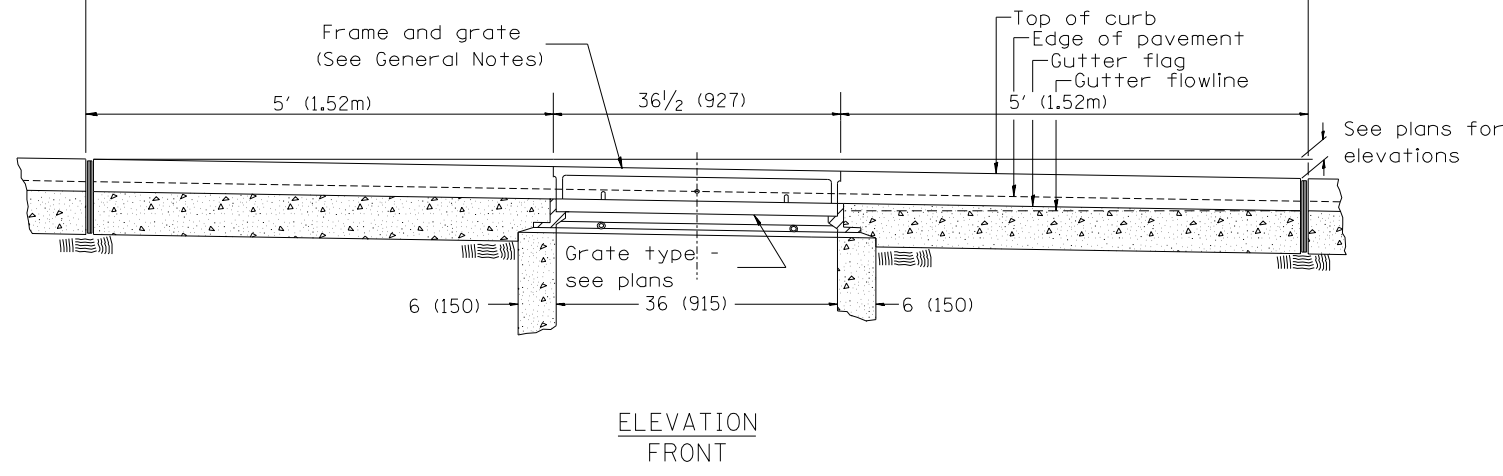
1. Include State Standard 606001 for combination concrete curb and gutter details.
2. Include State Standard 420001 for pavement joints.
3. Include District CADD Standard for frame and grates and specify grate type in plans.
4. Include District CADD Standard for frame and grates and specify grate type in plans.
5. The designer should include pavement removal quantities when the apron requires pavement removal.

MODEL: D:\p\11...  
FILE: I:\NAME: I:\PROJECTS\2020-105\_COWI\_SRT5\MANUSCRIPTS\DRAWING\CADD\TRANSPORTATION\CADD\_SHEET\SD0417103-SHT-MAIN-DETAIL-602001-D4.rvt



GENERAL NOTES

1. Inlet construction shall be in accordance with Section 602 of the Standard Specifications.
2. Combination Concrete Curb & Gutter shall be constructed in accordance with Section 606 of the Standard Specifications.
3. See District CADD Standard 604001-D4 for frame and grates.



All dimensions are in inches (millimeters) unless otherwise noted.



USER NAME	CC	DESIGNED	CC	REVISED	-
FILENAME	D:\17103-SHT-MAIN-DETAIL-602001-D4	DRAWN	AE	REVISED	-
PLOT SCALE	50.0001" / in.	CHECKED	ET	REVISED	-
PLOT DATE	5/18/2020 11:51:12 AM	DATE	-	REVISED	-

STATE OF ILLINOIS  
DEPARTMENT OF TRANSPORTATION

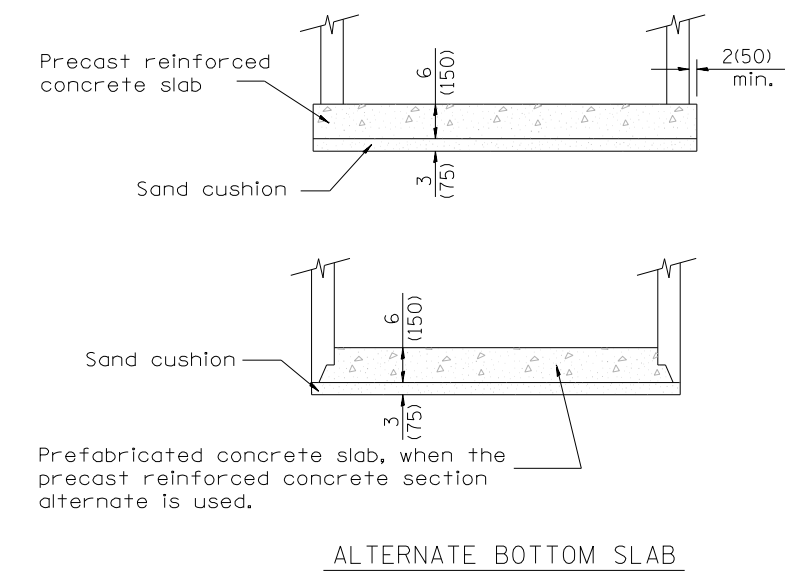
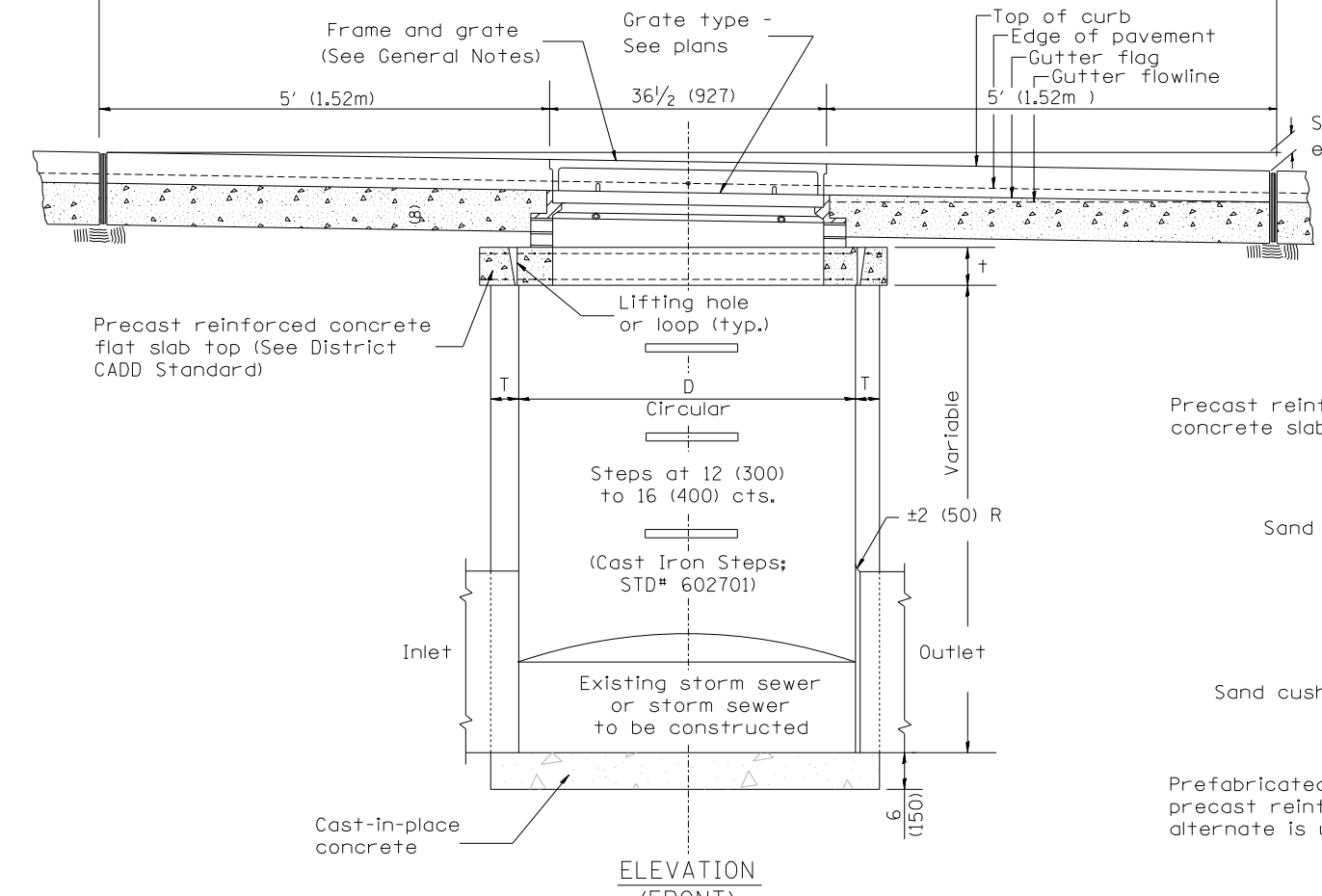
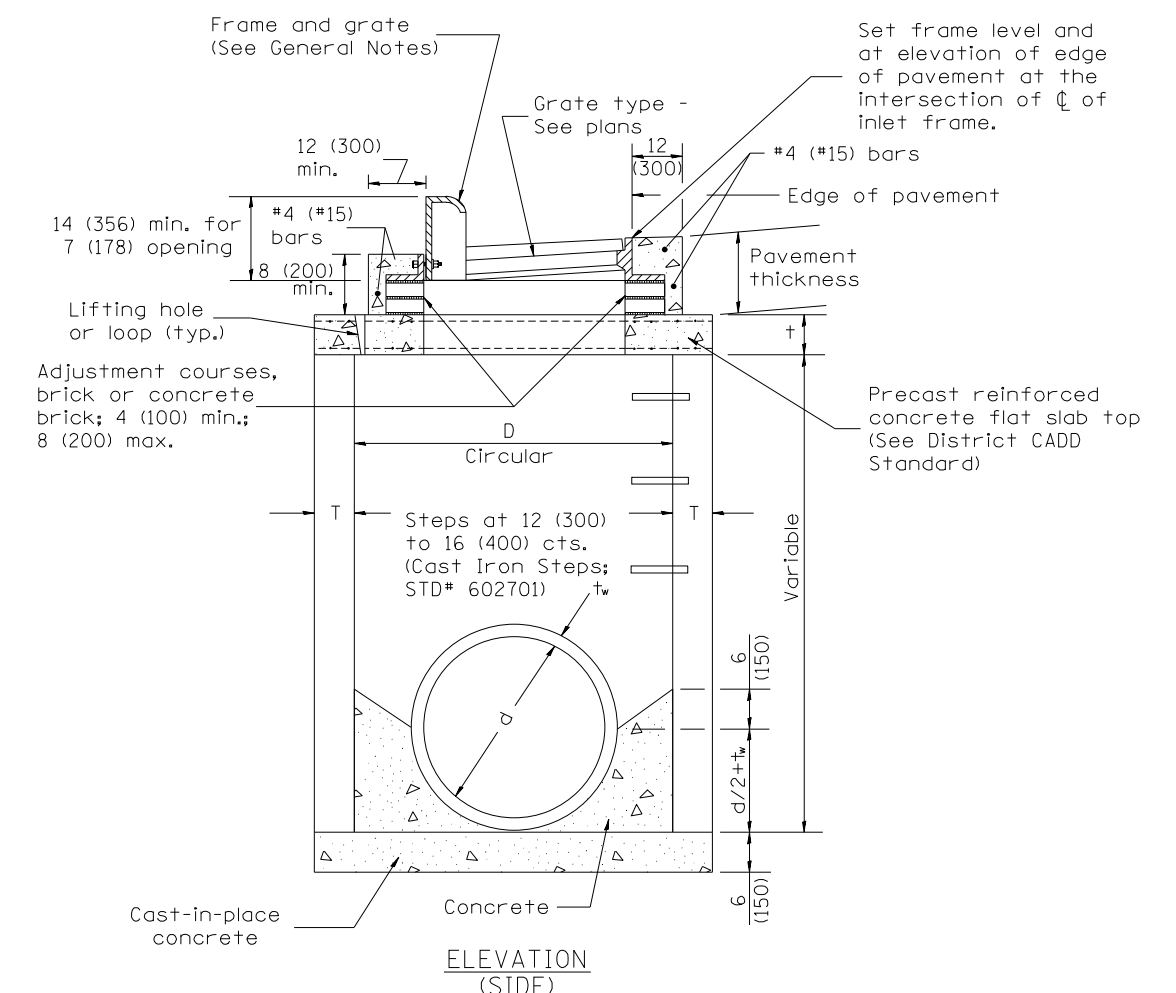
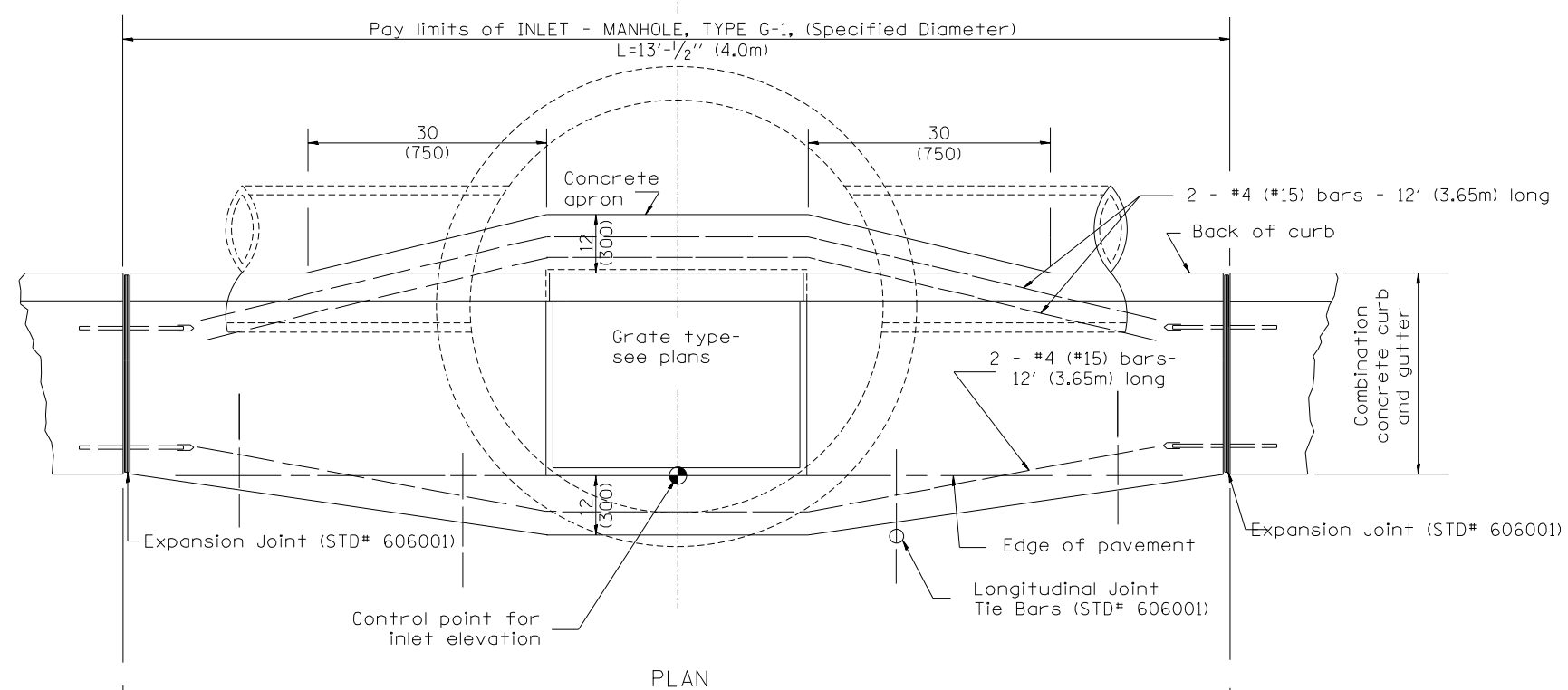
IDOT DISTRICT 4 DETAIL 602001  
INLETS, TYPE G-1

SCALE: NTS SHEET 1 OF 4 SHEETS STA. TO STA.

F.A.P. RTE.	SECTION	COUNTY	TOTAL SHEETS	SHEET NO.
398	19-00125-00-SW	TAZEWELL	21	15
WESTERN AVE RECONSTRUCTION			CONTRACT NO. 89768	
ILLINOIS		FED. AID PROJECT		



DESIGNER NOTES:  
 1. Include State STD# 606001 for combination concrete curb and gutter details.  
 2. Include State STD# 420001 for pavement limits.  
 3. Include State STD# 602701 for cast iron steps.  
 4. Include District CADD Standard for frame and grates and specify grate type in plans.  
 5. Include District CADD Standard for precast reinforced concrete flat slab top.  
 6. Include District Special Provision. Pay item includes inlet - manhole, flat slab top, transitional c.c.&g. and frame and grate. All work within pay limits.  
 7. Specify diameter of inlet - manhole in plans.  
 8. The designer should include pavement removal quantities when the apron requires pavement removal.

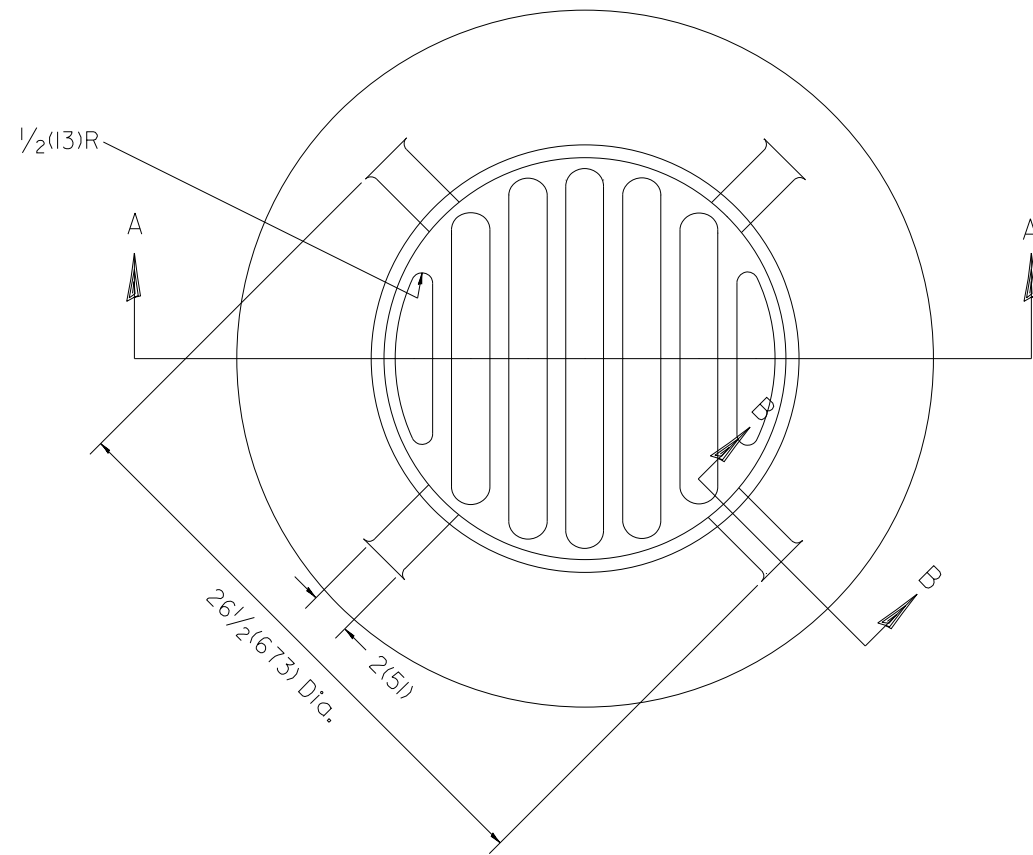


TABLE

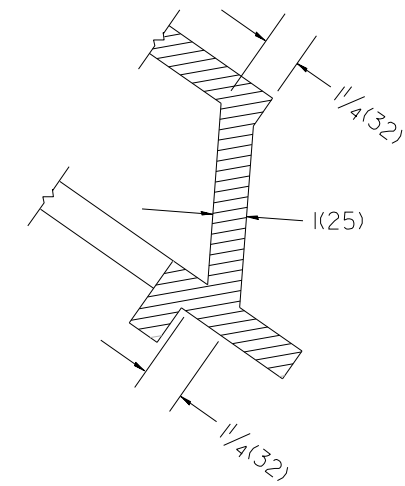
D	T	+
4' (1.2m)	5 (125)	6 (150)
5' (1.5m)	6 (150)	8 (200)
6' (1.8m)	7 3/4 (195)	8 (200)
8' (2.4m)	9 (225)	10 (250)

- GENERAL NOTES
- Inlet-manhole construction shall be in accordance with Section 602 of the Standard Specifications.
  - Combination concrete curb and gutter shall be constructed in accordance with Section 606 of the Standard Specifications.
  - See District CADD Standard 604001-D4 for frame and grates.
  - See District CADD Standard for precast reinforced concrete flat slab top.

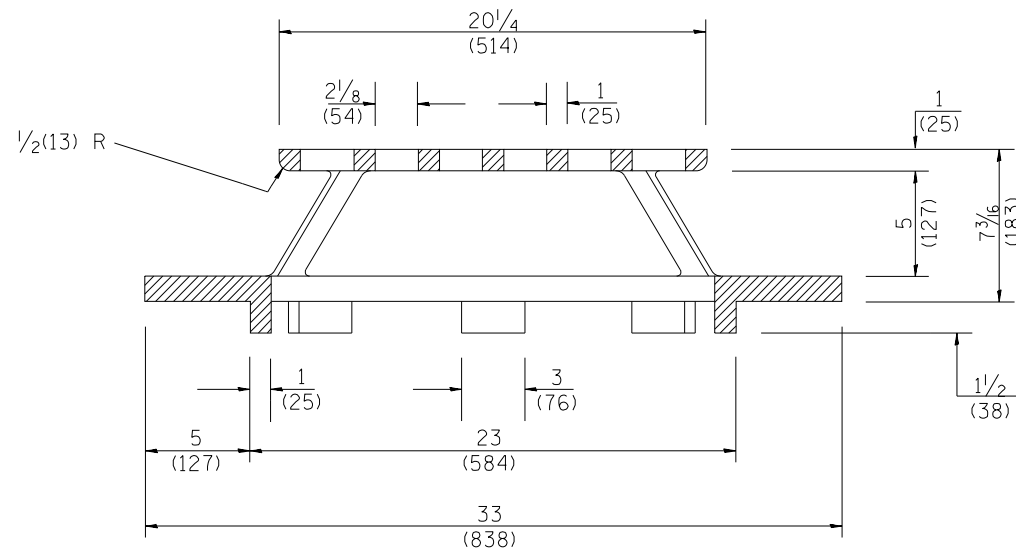
All dimensions are in inches (millimeters) unless otherwise noted.



PLAN



SECTION B - B



SECTION A - A

GENERAL NOTES

- MATERIAL - Cast Gray Iron  
Weight 209 lbs (95 kg)

DESIGNER NOTE:  
1. INCLUDE DISTRICT SPECIAL PROVISION.  
MODEL: D:\d4\17103-SHT-MAIN-DETAIL-604301-4.dwg  
FILE NAME: C:\PROJ\2020-DB-COM-STR-MAIN\17103-SHT-MAIN-DETAIL-604301-4.dwg



USER NAME	ColinC	DESIGNED	CC	REVISED	-
FILENAME	D417103-SHT-MAIN-DETAIL-604301-4	DRAWN	AE	REVISED	-
PLOT SCALE	50.0001 * / in.	CHECKED	ET	REVISED	-
PLOT DATE	5/18/2020 11:51:25 AM	DATE	-	REVISED	-

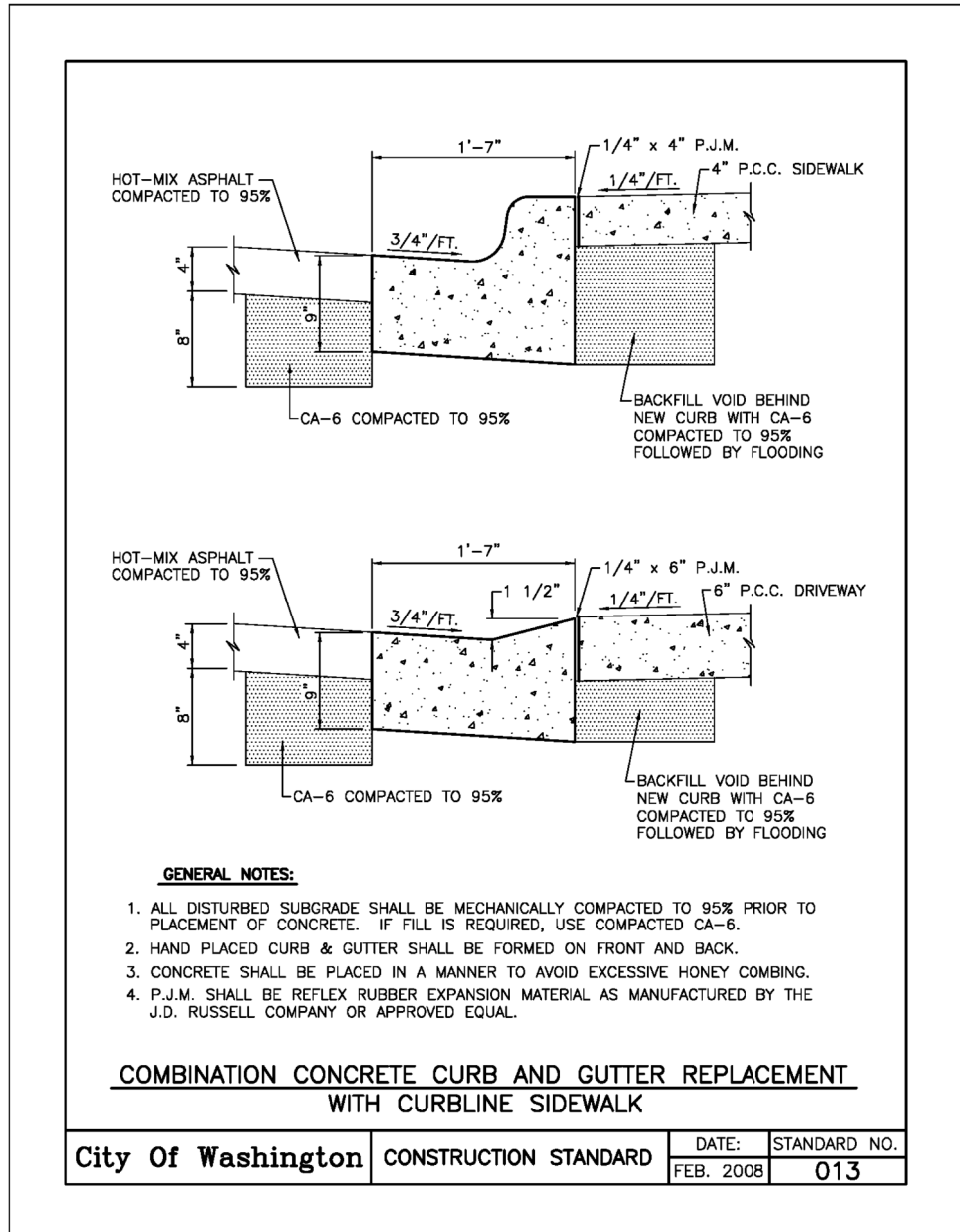
STATE OF ILLINOIS  
DEPARTMENT OF TRANSPORTATION

IDOT DISTRICT 4 DETAIL 604301  
TYPE 37 GRATE

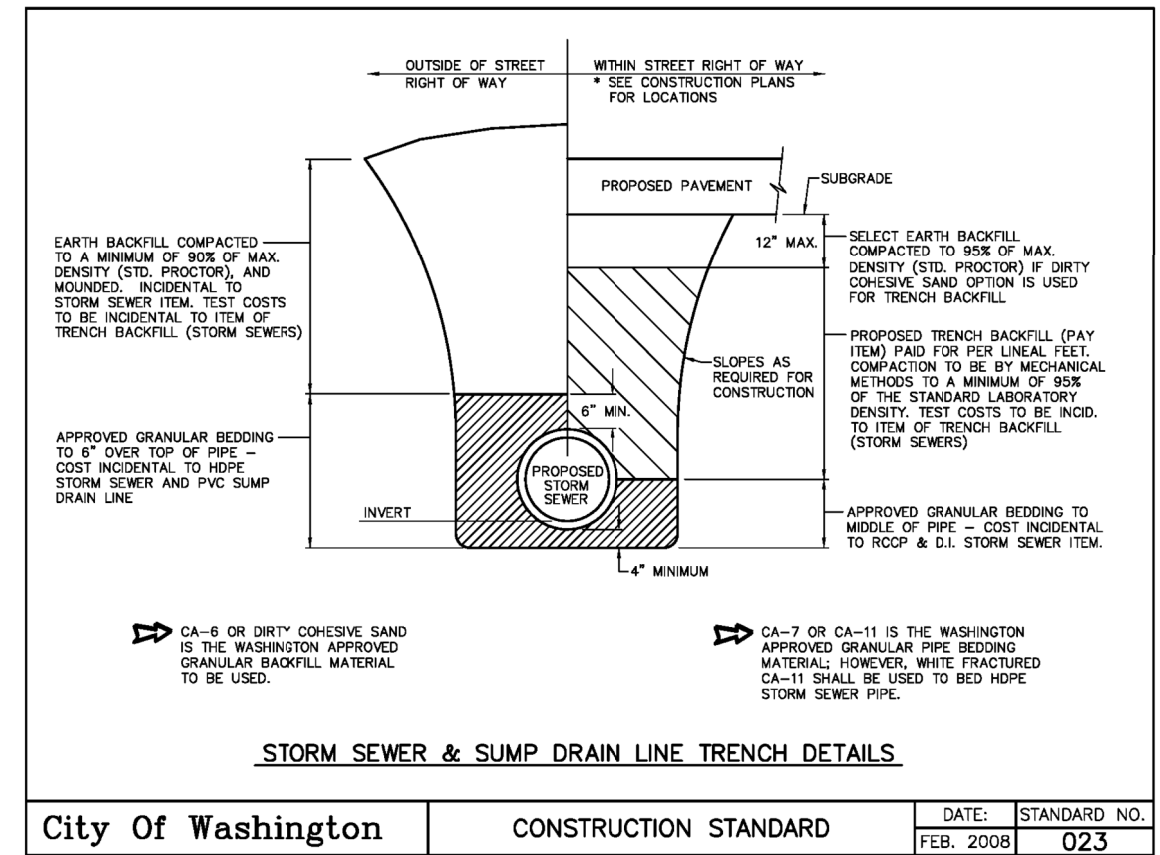
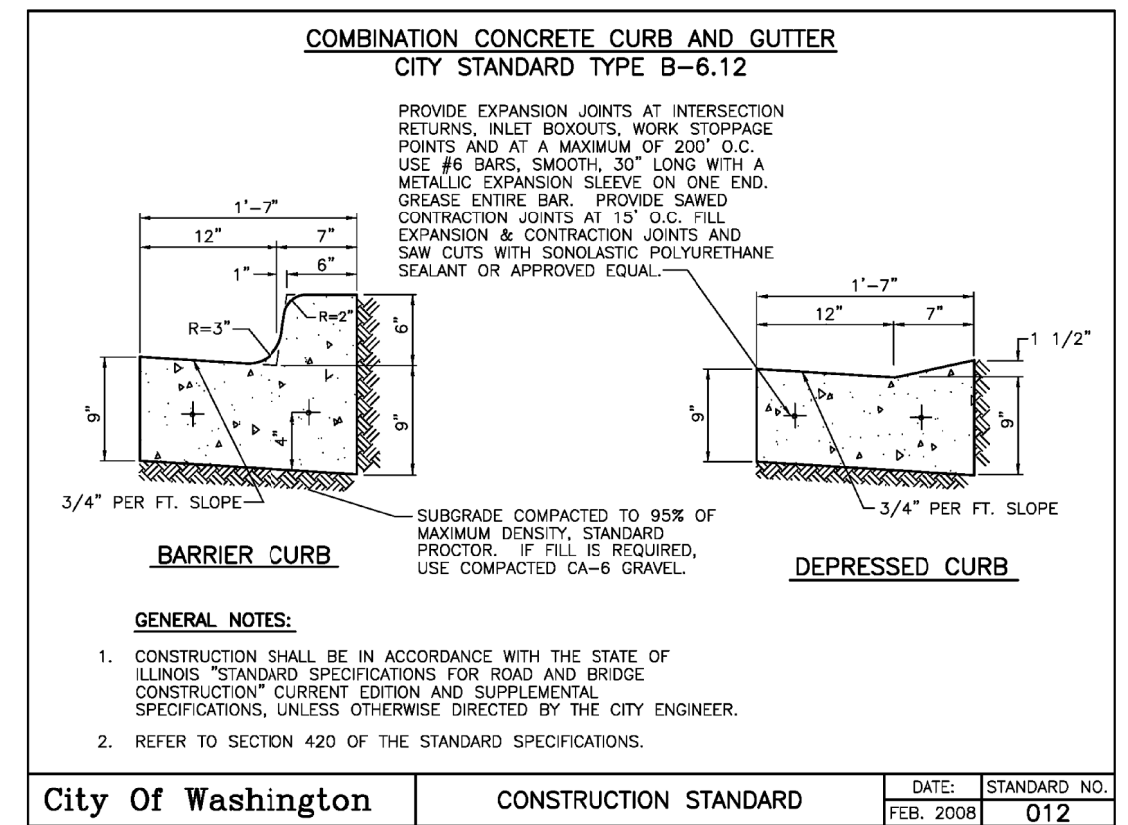
SCALE: NTS SHEET 4 OF 4 SHEETS STA. TO STA.

All dimensions are in inches (millimeters) unless otherwise noted.

F.A.P. RTE.	SECTION	COUNTY	TOTAL SHEETS	SHEET NO.
398	19-00125-00-SW	TAZEWELL	21	17
WESTERN AVE RECONSTRUCTION			CONTRACT NO. 89768	
ILLINOIS			FED. AID PROJECT	



- GENERAL NOTES:**
1. ALL DISTURBED SUBGRADE SHALL BE MECHANICALLY COMPACTED TO 95% PRIOR TO PLACEMENT OF CONCRETE. IF FILL IS REQUIRED, USE COMPACTED CA-6.
  2. HAND PLACED CURB & GUTTER SHALL BE FORMED ON FRONT AND BACK.
  3. CONCRETE SHALL BE PLACED IN A MANNER TO AVOID EXCESSIVE HONEY COMBING.
  4. P.J.M. SHALL BE REFLEX RUBBER EXPANSION MATERIAL AS MANUFACTURED BY THE J.D. RUSSELL COMPANY OR APPROVED EQUAL.



MODEL: D:\p\c\...  
 FILE NAME: ...  
 USER: ...  
 DATE: ...



USER NAME	ColinC	DESIGNED	cc	REVISED	-
FILENAME	D:\17103-SHT-MAIN-DETAIL-CITY-OF-WASHINGTON\012-13-16-23.dgn	CHECKED	ET	REVISED	-
PLOT SCALE	1,000' / in.	DATE	-	REVISED	-
PLOT DATE	5/18/2020 11:51:33 AM				

STATE OF ILLINOIS  
DEPARTMENT OF TRANSPORTATION

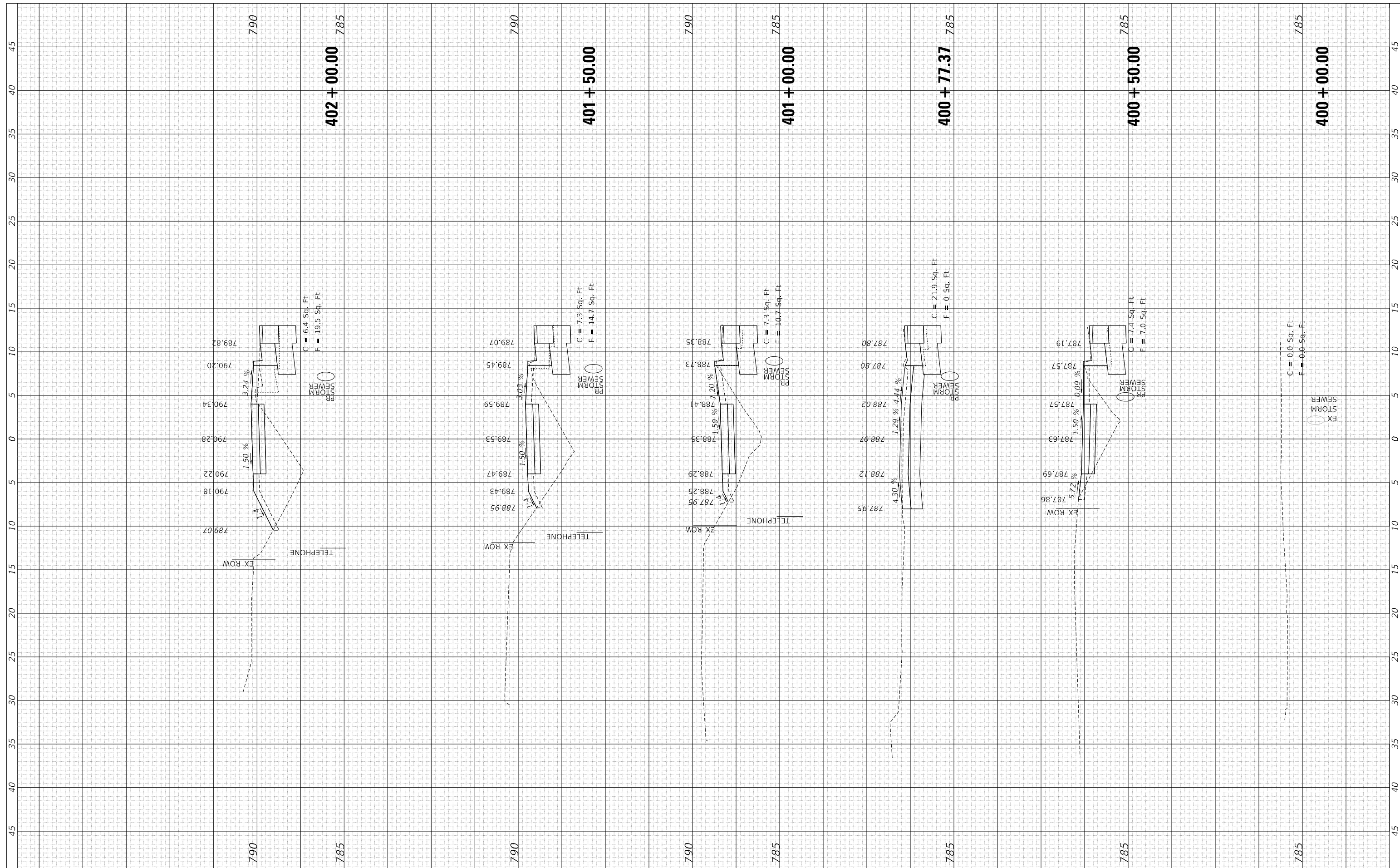
CITY OF WASHINGTON DETAILS

SCALE: NTS      SHEET 1 OF 1 SHEETS      STA.      TO STA.

F.A.P. RTE.	SECTION	COUNTY	TOTAL SHEETS	SHEET NO.
398	19-00125-00-SW	TAZEWELL	21	18
WESTERN AVE RECONSTRUCTION			CONTRACT NO. 89768	
ILLINOIS FED. AID PROJECT				

FINAL SURVEY NO.	SURVEYED PLOTTED TEMPLATE AREAS CHECKED	BY	DATE

ORIGINAL SURVEY NO.	SURVEYED PLOTTED TEMPLATE AREAS CHECKED	BY	DATE



USER NAME = ColfnC  
 FILENAME = D417103-SHT-MAN-XS.dgn  
 PLOT SCALE = 5,0000 ' / In.  
 PLOT DATE = 5/18/2020 11:52:03 AM

DESIGNED - CC  
 DRAWN - AE  
 CHECKED - ET  
 DATE - 5/12/20

REVISED -  
 REVISED -  
 REVISED -  
 REVISED -

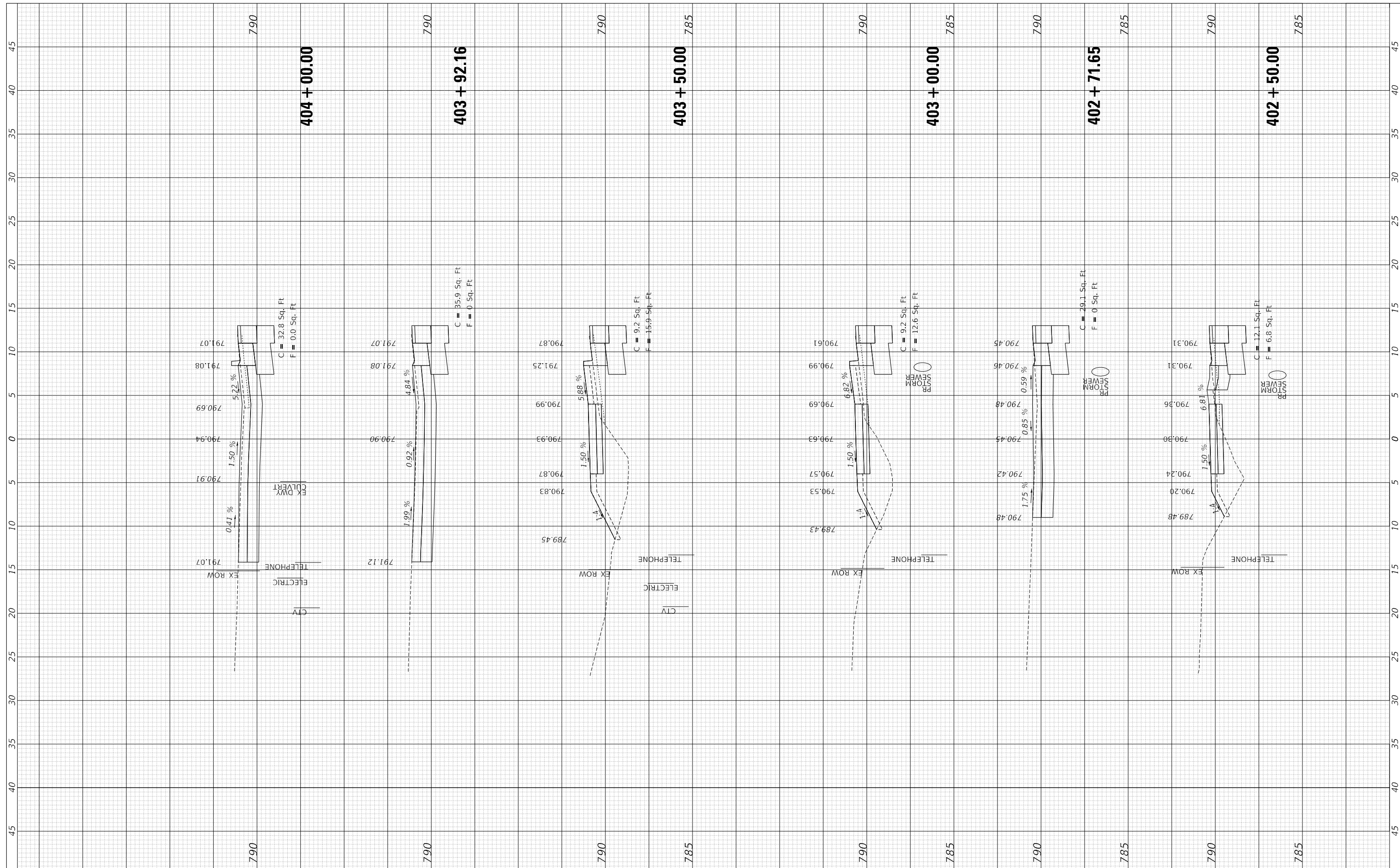
**STATE OF ILLINOIS**  
**DEPARTMENT OF TRANSPORTATION**

**CROSS SECTIONS**  
**MAIN ST SHARED-USE PATH**  
 SCALE: 1"=10'H, 1"=5'V SHEET 1 OF 3 SHEETS STA. 400+00.00 TO STA. 402+00.00

F.A.P. RTE.	SECTION	COUNTY	TOTAL SHEETS	SHEET NO.
398	19-00125-00-SW	TAZEWELL	21	19
CONTRACT NO.			89768	
ILLINOIS FED. AID PROJECT				

FINL SURVEY NO.	SURVEYED PLOTTED TEMPLATE AREAS CHECKED	BY	DATE

ORIGINAL SURVEY NO.	SURVEYED PLOTTED TEMPLATE AREAS CHECKED	BY	DATE



USER NAME = ColfnC  
 FILENAME = D417103-SHT-MAIN-XS.dgn  
 PLOT SCALE = 5.0000' / 1in.  
 PLOT DATE = 5/18/2020 11:52:06 AM

DESIGNED - CC  
 DRAWN - AE  
 CHECKED - ET  
 DATE - 5/12/20

REVISED -  
 REVISED -  
 REVISED -  
 REVISED -

STATE OF ILLINOIS  
 DEPARTMENT OF TRANSPORTATION

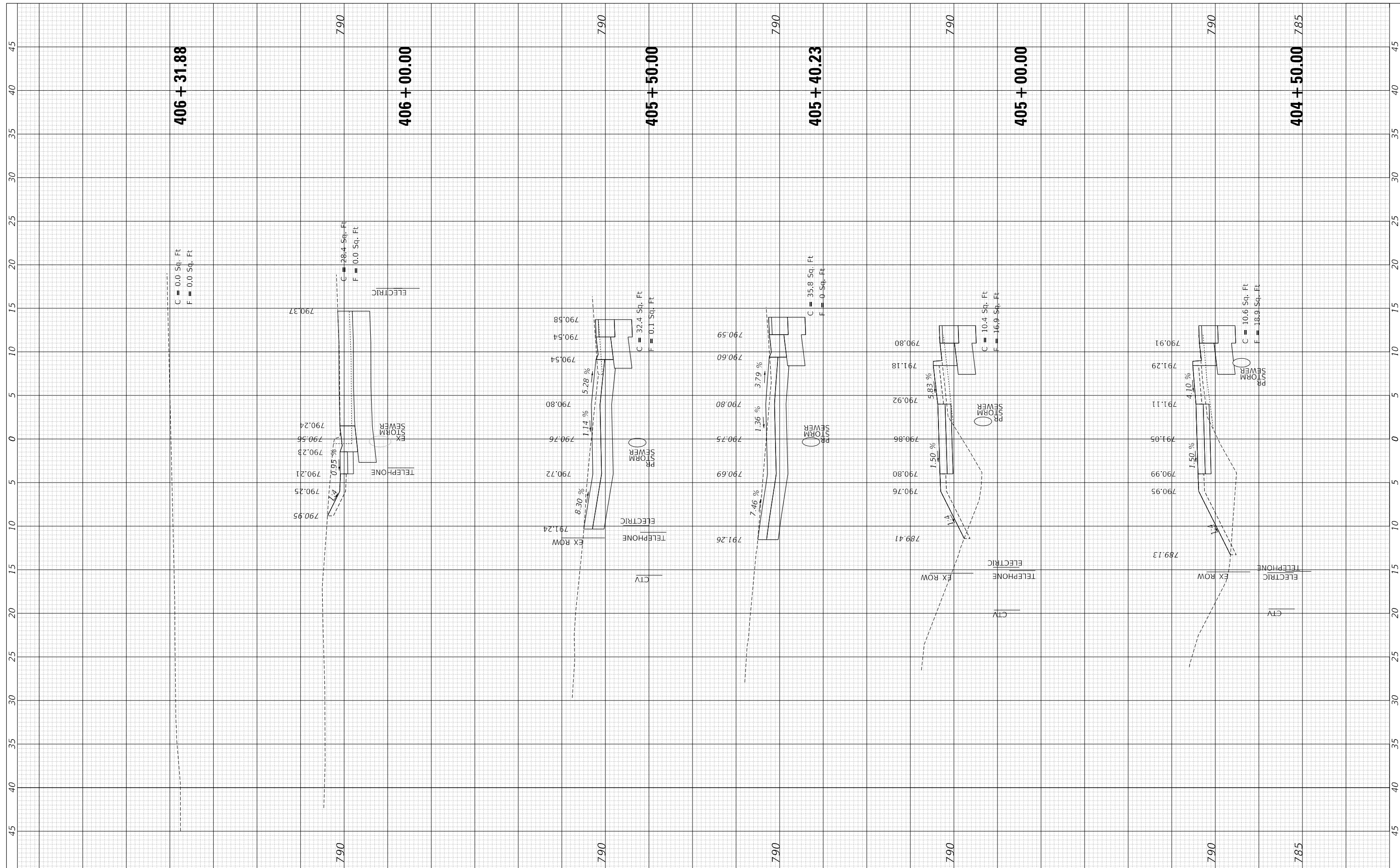
CROSS SECTIONS  
 MAIN ST SHARED-USE PATH  
 SCALE: 1"=10'H, 1"=5'V SHEET 2 OF 3 SHEETS STA. 402+50.00 TO STA. 404+00.00

F.A.P. RTE.	SECTION	COUNTY	TOTAL SHEETS	SHEET NO.
398	19-00125-00-SW	TAZEWELL	21	20
CONTRACT NO.			89768	
ILLINOIS FED. AID PROJECT				



FINL SURVEY NO.	SURVEYED PLOTTED TEMPLATE AREAS CHECKED	BY	DATE

ORIGINAL SURVEY NO.	SURVEYED PLOTTED TEMPLATE AREAS CHECKED	BY	DATE



USER NAME = ColfnC  
 FILENAME = D417103-SHT-MAIN-XS.dgn  
 PLOT SCALE = 5,0000' / 1in.  
 PLOT DATE = 5/18/2020 11:52:09 AM

DESIGNED - CC  
 DRAWN - AE  
 CHECKED - ET  
 DATE - 5/12/20

REVISED -  
 REVISED -  
 REVISED -  
 REVISED -

**STATE OF ILLINOIS  
 DEPARTMENT OF TRANSPORTATION**

**CROSS SECTIONS  
 MAIN ST SHARED-USE PATH**

SCALE: 1"=10'H, 1"=5'V SHEET 3 OF 3 SHEETS STA. 404+50.00 TO STA. 406+31.88

F.A.P. RTE.	SECTION	COUNTY	TOTAL SHEETS	SHEET NO.
398	19-00125-00-SW	TAZEWELL	21	21
CONTRACT NO.			89768	
ILLINOIS FED. AID PROJECT				