

STATE OF ILLINOIS
DEPARTMENT OF TRANSPORTATION

F.A.P. RTE.	SECTION	COUNTY	TOTAL SHEETS	SHEET NO.
372	FAP 0372 23 C&J	COOK	16	1
		ILLINOIS	CONTRACT NO. 62V29	

FOR INDEX OF SHEETS, SEE SHEET NO. 2

PROJECT IS LOCATED IN VILLAGES OF
MAYWOOD, FOREST PARK, MELROSE PARK
& RIVER GROVE.

PROPOSED
HIGHWAY PLANS

FAP ROUTE 372 (IL-171)
SECTION: FAP 0372 23 C&J
CRACK & JOINT SEALING
COOK COUNTY

C-91-008-24

TRAFFIC DATA

2023
IL-171 (First Ave.) = 32,900

SPEED LIMIT

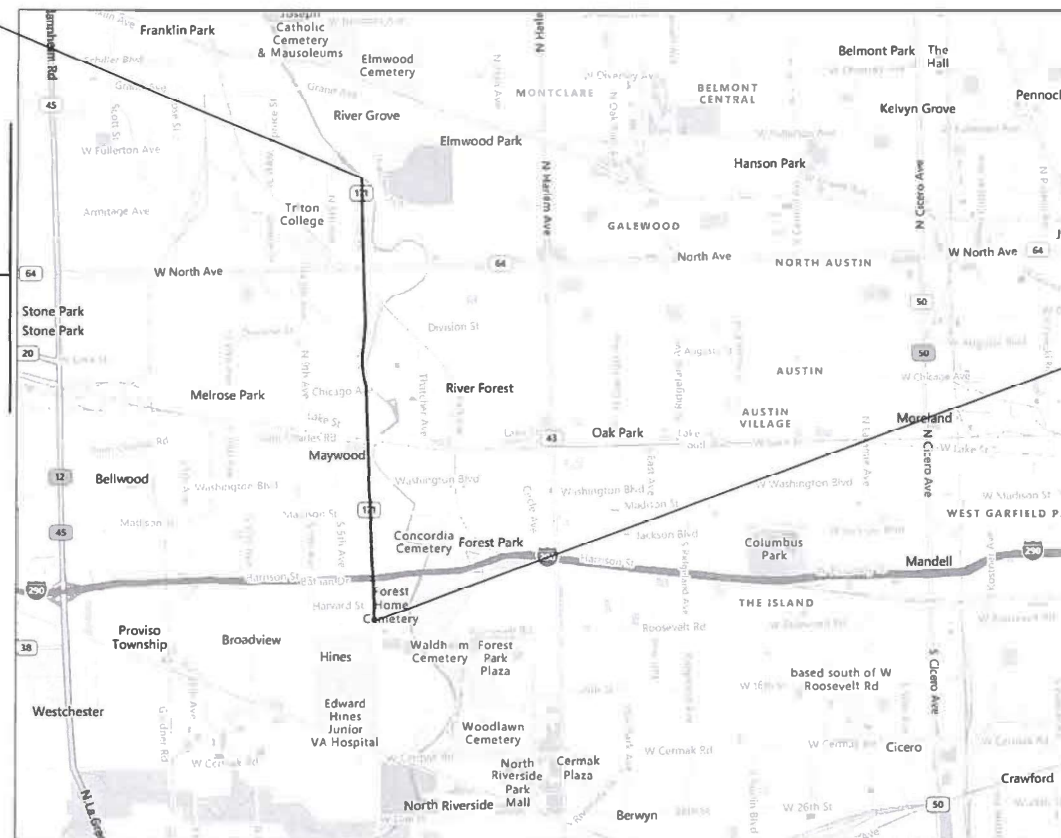
IL-171 (First Ave.) = 35-40 MPH



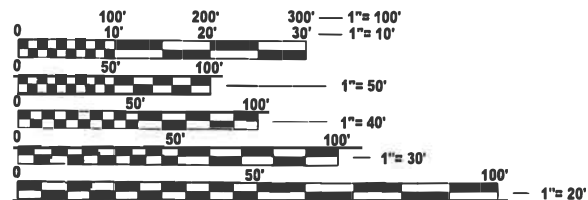
PROJECT ENDS
STA 198+30

OMISSIONS
STA 32+25 TO 34+81
STA 93+38 TO 93+86
STA 130+30 TO 130+62
STA 187+46 TO 188+18

T 39 N | T 40 N



PROJECT BEGINS
STA 14+66



FULL SIZE PLANS HAVE BEEN PREPARED USING STANDARD
ENGINEERING SCALES. REDUCED SIZED PLANS WILL NOT
CONFORM TO STANDARD SCALES. IN MAKING MEASUREMENTS
ON REDUCED PLANS, THE ABOVE SCALES MAY BE USED.

J.U.L.I.E.
JOINT UTILITY LOCATION INFORMATION FOR EXCAVATION
1-800-892-0123
OR 811

PROJECT ENGINEER: RODRIGO LEDEZMA (847)705-4580
PROJECT MANAGER: JEAN ALAIN MIDY (847)221-3056

CONTRACT NO. 62V29

PROVISO TOWNSHIP
GROSS LENGTH = 18,364 FT. = 3.478 MILE
NET LENGTH = 17,956 FT. = 3.400 MILE

STATE OF ILLINOIS
DEPARTMENT OF TRANSPORTATION

SUBMITTED *May 6 20 26*

[Signature] REGIONAL ENGINEER

June 26, 2026
[Signature] ENGINEER OF DESIGN AND ENVIRONMENT

June 26, 2026
[Signature] DIRECTOR OF HIGHWAYS PROJECT IMPLEMENTATION

PRINTED BY THE AUTHORITY
OF THE STATE OF ILLINOIS

INDEX OF SHEETS

SHEET NO.	DESCRIPTION
1	COVER SHEET
2	INDEX OF SHEETS, STATE STANDARDS, AND GENERAL NOTES
3	SUMMARY OF QUANTITIES
4-10	ROADWAY PLANS
11	TRAFFIC CONTROL AND PROTECTION FOR SIDE ROADS, INTERSECTIONS AND DRIVEWAYS (TC-10)
12	DISTRICT ONE TYPICAL PAVEMENT MARKING (TC-13)
13	TRAFFIC CONTROL AND PROTECTION AT TURN BAY (TO REMAIN OPEN TO TRAFFIC) (TC-14)
14	TRAFFIC CONTROL FOR SHOULDERS AND PARTIAL RAMP CLOSURES (TC-17)
15	ARTERIAL ROAD INFORMATION SIGN (TC-22)
16	CRACK AND JOINT SEALING DETAIL (PD-11)

STATE STANDARDS

STANDARD NO.	DESCRIPTION
00001-09	STANDARD SYMBOLS, ABBREVIATIONS, AND PATTERNS
701101-05	OFF-RD OPERATIONS, MULTILANE, 15' TO 24" FROM PAVEMENT EDGE
701427-05	LANE CLOSURE, MULTILANE, INTERMITTENT OR MOVING OPERATIONS FOR SPEEDS < 40 MPH
701601-09	URBAN LANE CLOSURE MULTILANE, 1W OR 2W WITH NONTRAVERSABLE MEDIAN
701602-10	URBAN SINGLE LANE CLOSURE, MULTILANE, 2W WITH BIDIRECTIONAL LEFT TURN LANE
701606-10	URBAN SINGLE LANE CLOSURE, MULTILANE, 2W WITH MOUNTABLE MEDIAN
701701-10	URBAN LANE CLOSURE, MULTILANE INTERSECTION
701901-11	TRAFFIC CONTROL DEVICES

GENERAL NOTES

- BEFORE STARTING ANY EXCAVATION, THE CONTRACTOR SHALL CALL "JULIE AT (800) 892-0123 OR 811 FOR FIELD LOCATIONS OF BURIED ELECTRIC, TELEPHONE AND GAS FACILITIES. (48 HOURS NOTIFICATION IS REQUIRED).
- THE CONTRACTOR SHALL COORDINATE CONSTRUCTION ACTIVITIES WITH UTILITY COMPANIES, VILLAGE OF MAYWOOD, FOREST PARK, MELROSE PARK AND RIVER GROVE IN COOK COUNTY.
- THE CONTRACTOR WILL NOT BE ALLOWED TO SET UP A YARD OR FIELD OFFICE ON STATE PROPERTY WITHOUT WRITTEN PERMISSION FROM THE DEPARTMENT.
- BEFORE BEGINNING ANY WORK, THE CONTRACTOR SHALL RETAIN AND RECORD FOR FUTURE REFERENCE, ALL EXISTING PAVEMENT MARKING LINES (AND RAISED REFLECTIVE PAVEMENT MARKERS) IN ORDER THAT THESE LOCATIONS CAN BE RE-ESTABLISHED FOR STRIPING. EXACT LOCATIONS OF ALL PAVEMENT MARKINGS SHALL BE AS DIRECTED BY THE ENGINEER.
- THE RESIDENT ENGINEER SHALL CONTACT ABDULLA ALI AREA TRAFFIC FIELD TECHNICIAN, AT ABDULLA.ALI@ILLINOIS.GOV, A MINIMUM OF TWO (2) WEEKS PRIOR TO THE PLACEMENT OF PERMANENT PAVEMENT MARKINGS.
- ANY DAMAGE TO EXISTING PAVEMENT MARKINGS OR RAISED REFLECTIVE PAVEMENT MARKERS OUTSIDE THE REMOVAL LINE SHOWN ON THE PLANS SHALL BE REPLACED AT THE CONTRACTOR'S EXPENSE.
- ALL PAVEMENT MARKINGS SHALL BE PLACED THROUGHOUT THE IMPROVEMENT ACCORDING TO DISTRICT 1 TYPICAL PAVEMENT MARKING.
- THE CONTRACTOR SHALL CONTACT KALPANA KANNAN-HOSADURGA THE DISTRICT TRAFFIC CONTROL SUPERVISOR AT KALPANA.KANNAN-HOSADURGA@ILLINOIS.GOV A MINIMUM OF 72 HOURS IN ADVANCE OF BEGINNING WORK.
- THE CONTRACTOR SHALL BE REQUIRED TO PROVIDE ACCESS TO ABUTTING PROPERTY AT ALL TIMES DURING THE CONSTRUCTION OF THIS PROJECT.
- MATERIALS RESULTING FROM THE ROUTING OF CRACKS IN THE EXISTING PAVEMENT MAY BE PLACED, SHAPED AND COMPACTED TO THE SATISFACTION OF THE ENGINEER ALONG EXISTING AGGREGATE SHOULDERS ADJACENT TO THE PAVEMENT. ALL MATERIALS RESULTING FROM THE ROUTING OF CRACKS IN PAVEMENT WITHOUT AGGREGATE SHOULDERS AND SURPLUS MATERIALS RESULTING FROM THE ROUTING OF CRACKS IN PAVEMENTS WITH AGGREGATE SHOULDERS, WHERE ALL MATERIALS ARE NOT PLACED ALONG EXISTING AGGREGATE SHOULDERS, SHALL BE DISPOSED OF AS SPECIFIED IN ARTICLE 202.03 OF THE STANDARD SPECIFICATIONS. OLD SEALANTS REMOVED PRIOR TO ROUTING SHALL BE DISPOSED OF AS SPECIFIED IN ARTICLE 202.03. THIS WORK WILL NOT BE PAID FOR SEPARATELY, BUT THE COST SHALL BE CONSIDERED AS INCLUDED IN THE CONTRACT UNIT PRICE FOR THE CONSTRUCTION ITEMS INVOLVED, AND NO ADDITIONAL COMPENSATION WILL BE ALLOWED.
- IT SHALL BE THE CONTRACTOR'S RESPONSIBILITY TO VERIFY ALL DIMENSIONS AND CONDITIONS EXISTING IN THE FIELD PRIOR TO ORDERING MATERIALS AND BEGINNING CONSTRUCTION.
- DO NOT SCALE PLANS FOR CONSTRUCTION DIMENSIONS.

RAILROAD COORDINATION NOTES

- THE CONTRACTOR MUST SECURE RAILROAD FLAGGING SERVICES WHEN WORKING IN THE VICINITY OF THE UNION PACIFIC AT-GRADE CROSSING AT LEAST 45 DAYS IN ADVANCE OF WORK NEAR THE CROSSING. THE FOLLOWING IS AN APPROVED LIST OF THIRD-PARTY FLAGGING COMPANIES:
 RAILPROS:
 EMAIL: UP.INFO@RAILPROS.COM
 PHONE: 877-315-0513, EXT. 116
 NATIONAL RAILROAD SAFETY SERVICES:
 EMAIL: UP.REQUEST@NRSSINC.NET
 PHONE: 877-984-6777
 HTTPS://WWW.NRSSINC.NET/CONTACTS
- THE CONTRACTOR SHALL COMPLETE THE E-RAIL SAFE TRAINING PRIOR TO STARTING WORK ON THE UNION PACIFIC RIGHT-OF-WAY. INFORMATION ABOUT THE E-RAIL SAFE TRAINING CAN BE ACCESSED BY USING THE FOLLOWING LINK:
 HTTPS://WWW.UP.COM/ABOUTUP/COMMUNITY/SAFETY/ERAILSAFE/UP-PAT/INDEX.HTM
- OTHER UNION PACIFIC RAILROAD REQUIREMENTS CAN BE ACCESSED BY VISITING: WWW.UP.COM
- THE FOLLOWING ITEMS SHALL BE COMPLETED PRIOR TO THE CONTRACTOR COMMENCING WORK ON UPRR PROPERTY:
 - THE CONTRACTOR MUST CONTACT A FLAGGING COMPANY DIRECTLY AND SCHEDULE FLAGGERS TO BE PRESENT DURING THE CONTRACTOR'S WORK OPERATIONS. BELOW IS A LINK TO INFORMATION ON THIRD-PARTY APPROVED UPRR FLAGGING COMPANIES:
<https://www.up.com/real-estate/third-party-flagging>
 - THE CONTRACTOR AND SUB-CONTRACTOR(S) SHALL PARTICIPATE IN A SHORT PRE- CONSTRUCTION MEETING WITH REPRESENTATIVES OF THE ENGINEER AND THE UPRR. THE TOPICS TO BE DISCUSSED INCLUDE, BUT ARE NOT LIMITED TO, FLAGGING, TRAFFIC CONTROL, SAFETY, AND BADGING REQUIREMENTS.
 - ALL CONTRACTOR AND SUB-CONTRACTOR EMPLOYEES THAT INTEND TO ACCESS THE UPRR ROW MUST SUCCESSFULLY COMPLETE eRailSafe TRAINING. THE CONTRACTOR AND SUB-CONTRACTOR(S) SHALL PROVIDE COPIES OF EACH EMPLOYEE'S SUCCESSFULLY COMPLETED TRAINING CERTIFICATE TO THE APPROPRIATE UPRR REPRESENTATIVE.
 BELOW IS A LINK TO INFORMATION ON THE eRailSafe TRAINING:
<https://www.up.com/aboutup/community/safety/erailsafe/up-paUIndex.htm>
- See the Special Provision "UNION PACIFIC RAILROAD (UPRR) MAINTENANCE CONSENT LETTER (MCL) AND RAILROAD FLAGGERS:" for additional information.

MODEL: ConNotesSheet1 (Sheet)
 FILE NAME: C:\pwworking\dmhassan\11_316491L_171 (1st Ave)-sh-geomcde.dgn

USER NAME = naveed.hassan	DESIGNED -	REVISED -
	DRAWN -	REVISED -
PLOT SCALE = 0.16666633' / in.	CHECKED -	REVISED -
PLOT DATE = 3/5/2026	DATE -	REVISED -

**STATE OF ILLINOIS
DEPARTMENT OF TRANSPORTATION**

INDEX OF SHEETS, STATE STANDARDS, AND GENERAL NOTES

SCALE: SHEET OF 1 SHEETS STA. TO STA.

F.A.P. RTE.	SECTION	COUNTY	TOTAL SHEETS	SHEET NO.
372	FAP 0372 23 C&J	COOK	16	2
			CONTRACT NO. 62V29	
ILLINOIS FED. AID PROJECT				

SUMMARY OF QUANTITIES					TYPE CODE					
					URBAN	URBAN	URBAN	URBAN	URBAN	URBAN
					ROADWAY					
Code No.	Item	Unit	Total Quantity	0005						
45100100	CRACK ROUTING (PAVEMENT)	FOOT	120164	120164						
45100200	CRACK FILLING	POUND	34331	34331						
67100100	MOBILIZATION	L SUM	1	1						
70102625	TRAFFIC CONTROL AND PROTECTION, STANDARD 701606	L SUM	1	1						
70102632	TRAFFIC CONTROL AND PROTECTION, STANDARD 701602	L SUM	1	1						
70102635	TRAFFIC CONTROL AND PROTECTION, STANDARD 701701	L SUM	1	1						
70102630	TRAFFIC CONTROL AND PROTECTION, STANDARD 701601	L SUM	1	1						
78009000	MODIFIED URETHANE PAVEMENT MARKING - LETTERS AND SYMBOLS	SQ FT	2175	2175						
78009004	MODIFIED URETHANE PAVEMENT MARKING - LINE 4"	FOOT	49100	49100						
78009006	MODIFIED URETHANE PAVEMENT MARKING - LINE 6"	FOOT	6226	6226						
78009008	MODIFIED URETHANE PAVEMENT MARKING - LINE 8"	FOOT	380	380						
78009012	MODIFIED URETHANE PAVEMENT MARKING - LINE 12"	FOOT	1135	1135						
78009024	MODIFIED URETHANE PAVEMENT MARKING - LINE 24"	FOOT	2282	2282						
78100100	RAISED REFLECTIVE PAVEMENT MARKER	EACH	150	150						
78300200	RAISED REFLECTIVE PAVEMENT MARKER REMOVAL	EACH	50	50						
78300202	PAVEMENT MARKING REMOVAL - WATER BLASTING	SQ FT	160	160						
X6700407	ENGINEER'S FIELD OFFICE, TYPE A (D1)	CAL MO	12	12						
Z0048665	RAILROAD PROTECTIVE LIABILITY INSURANCE	L SUM	1	1						

MODEL: S0001 (Sheet)
 FILE NAME: c:\p\work\p\w\h\hassan\1131649\IL-171 (1st Ave)-shh-S00.dgn

USER NAME = naveed.hassan	DESIGNED -	REVISED -
PLOT SCALE = 0.16666633' / in.	DRAWN -	REVISED -
PLOT DATE = 3/5/2026	CHECKED -	REVISED -
	DATE -	REVISED -

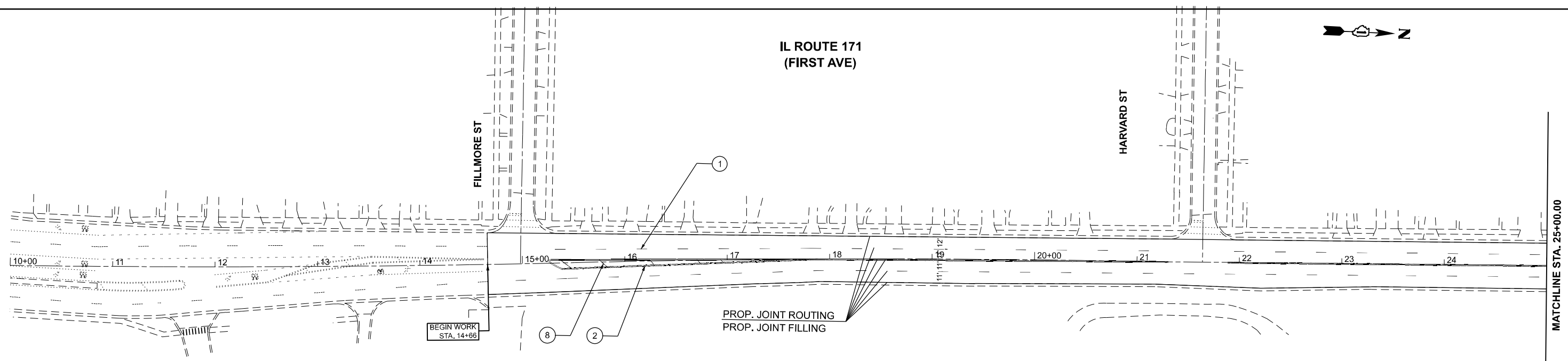
STATE OF ILLINOIS
DEPARTMENT OF TRANSPORTATION

IL-171 (FIRST AVE.) FROM DES PLAINES RIVER TO FILMORE STREET
SUMMARY OF QUANTITIES

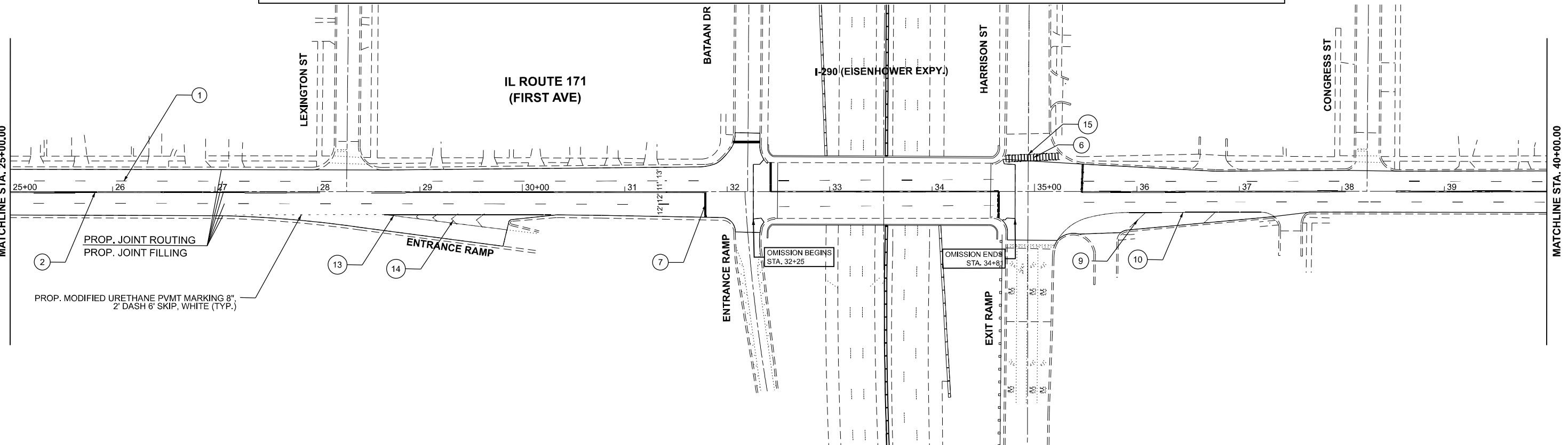
SCALE: SHEET OF 1 SHEETS STA. TO STA.

F.A.P. RTE.	SECTION	COUNTY	TOTAL SHEETS	SHEET NO.
372	FAP 0372 23 C&J	COOK	3	16
CONTRACT NO. 62V29			ILLINOIS FED. AID PROJECT	

IL ROUTE 171
(FIRST AVE)



- | | | |
|--|--|--|
| ① PROP. MODIFIED URETHANE PVTM MARKING 4", 10' DASH 30' SKIP, WHITE (TYP.) | ⑥ PROP. MODIFIED URETHANE PAVEMENT MARKING LINE, 12" CROSSWALK, WHITE 6' MIN (TYP.) | ⑪ PROP. MODIFIED URETHANE PVTM MARKING 4", 10' DASH 30' SKIP, YELLOW (TYP.) |
| ② PROP. MODIFIED URETHANE PVTM MARKING 4", DOUBLE YELLOW @ 11" C-C (TYP.) | ⑦ PROP. MODIFIED URETHANE PVTM MARKING LINE, 24" STOPBAR, WHITE (TYP.) | ⑫ PROP. MODIFIED URETHANE PVTM MARKING 4", MEDIAN LINE, YELLOW (TYP.) |
| ③ PROP. MODIFIED URETHANE PVTM. MARKING LETTERS AND SYMBOLS, WHITE (TYP.) | ⑧ PROP. MODIFIED URETHANE PVTM. MARKING 12" MEDIAN DIAGONAL @ 45° 75' C-C, YELLOW (TYP.) | ⑬ PROP. MODIFIED URETHANE PVTM MARKING 8", CHANNELIZING LINE, WHITE (TYP.) |
| ④ PROP. MODIFIED URETHANE PVTM MARKING 6", TURN LANE, WHITE (TYP.) | ⑨ PROP. MODIFIED URETHANE PVTM MARKING 12", SHOULDER DIAGONAL, @ 45° 75' C-C, WHITE (TYP.) | ⑭ PROP. MODIFIED URETHANE PVTM MARKING 12", GORE MARKING LINE, WHITE (TYP.) |
| ⑤ PROP. MODIFIED URETHANE PVTM MARKING 6", 2' DASH 6' SKIP, WHITE (TYP.) | ⑩ PROP. MODIFIED URETHANE PVTM MARKING 4", EDGE LINE, WHITE (TYP.) | ⑮ PROP. MODIFIED URETHANE PVTM MARKING 6", CROSSWALK, 2 @ 6' APART C-C, WHITE (TYP.) |



MODEL: EXCL - IL 171 (1st Ave) (Sheet)
FILE NAME: c:\p\work\pav\il171\171 (1st Ave) sht-plan.dgn

USER NAME = naveed.hassan	DESIGNED -	REVISED -
	DRAWN -	REVISED -
	CHECKED -	REVISED -
PLOT DATE = 1/21/2026	DATE -	REVISED -

STATE OF ILLINOIS
DEPARTMENT OF TRANSPORTATION

ROADWAY PLAN
IL-171 (FIRST AVE.) FROM DES PLAINES RIVER TO FILMORE STREET
SCALE: 1"=50' SHEET 1 OF 7 SHEETS STA. 10+00.00 TO STA. 40+00.00

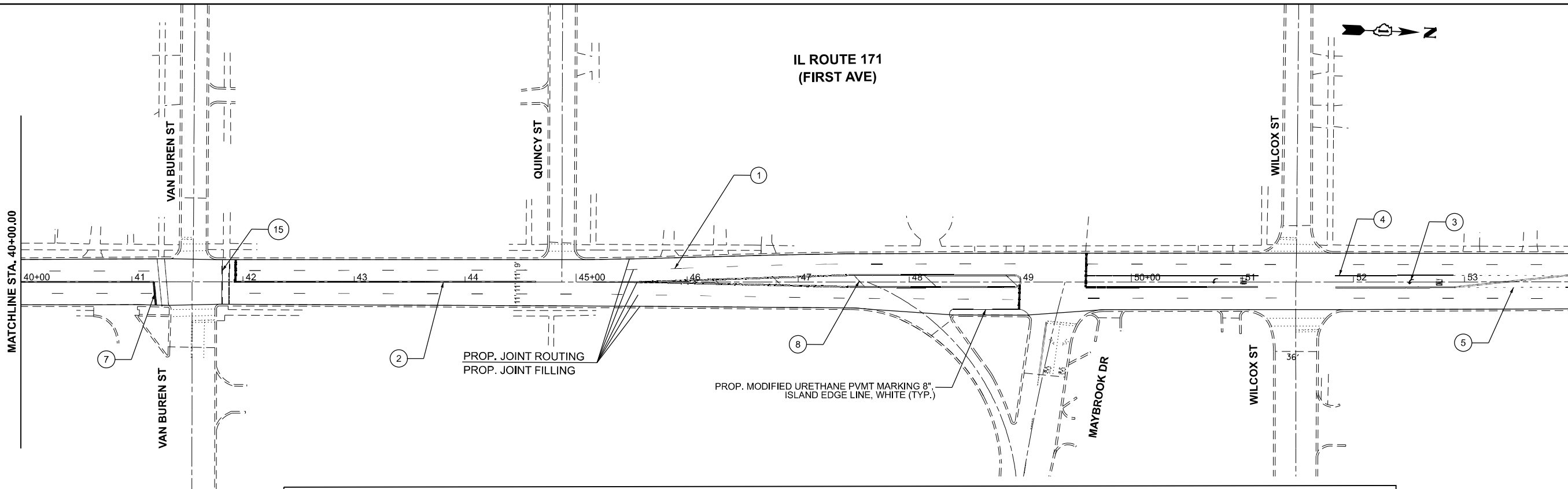
F.A.P. RTE.	SECTION	COUNTY	TOTAL SHEETS	SHEET NO.
372	FAP 0372 23 C&J	COOK	16	4
CONTRACT NO. 62V29				
ILLINOIS FED. AID PROJECT				

IL ROUTE 171
(FIRST AVE)



MATCHLINE STA. 40+00.00

MATCHLINE STA. 54+00.00

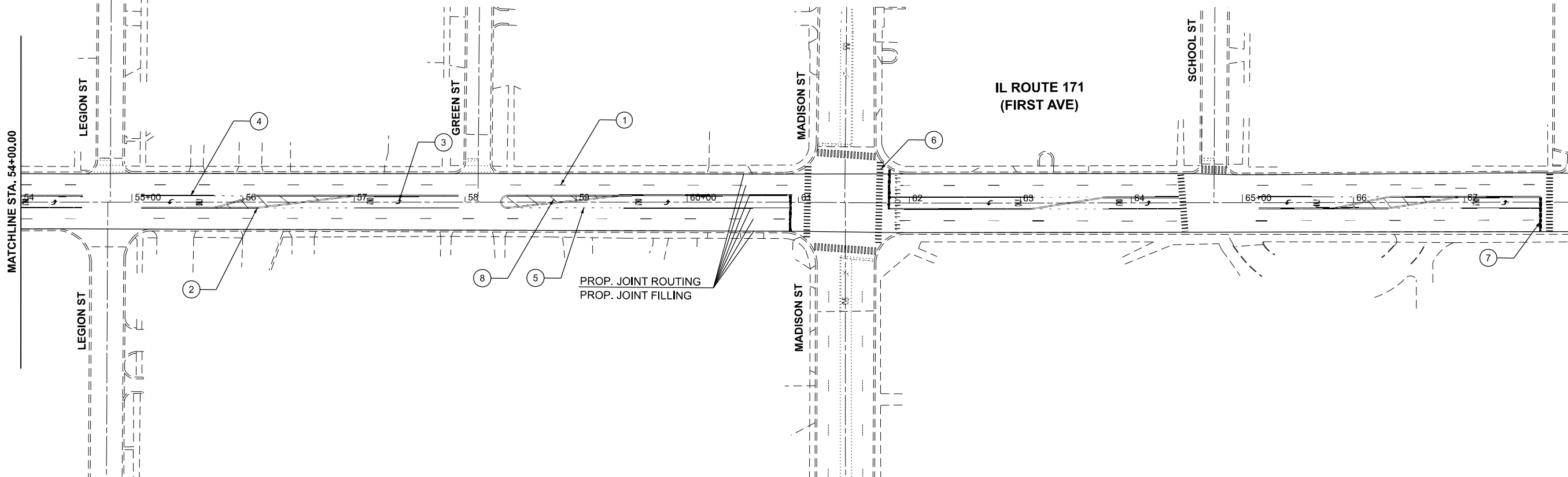


- | | | |
|---|---|---|
| <p>1 PROP. MODIFIED URETHANE PVMT MARKING 4", 10' DASH 30' SKIP, WHITE (TYP.)</p> <p>2 PROP. MODIFIED URETHANE PVMT MARKING 4", DOUBLE YELLOW @ 11" C-C (TYP.)</p> <p>3 PROP. MODIFIED URETHANE PVMT. MARKING LETTERS AND SYMBOLS, WHITE (TYP.)</p> <p>4 PROP. MODIFIED URETHANE PVMT MARKING 6", TURN LANE, WHITE (TYP.)</p> <p>5 PROP. MODIFIED URETHANE PVMT MARKING 6", 2' DASH 6' SKIP, WHITE (TYP.)</p> | <p>6 PROP. MODIFIED URETHANE PAVEMENT MARKING LINE, 12" CROSSWALK, WHITE 6' MIN (TYP.)</p> <p>7 PROP. MODIFIED URETHANE PVMT MARKING LINE, 24" STOPBAR, WHITE (TYP.)</p> <p>8 PROP. MODIFIED URETHANE PVMT. MARKING 12" MEDIAN DIAGONAL @ 45° 75' C-C, YELLOW (TYP.)</p> <p>9 PROP. MODIFIED URETHANE PVMT MARKING 12", SHOULDER DIAGONAL, @ 45° 75' C-C, WHITE (TYP.)</p> <p>10 PROP. MODIFIED URETHANE PVMT MARKING 4", EDGE LINE, WHITE (TYP.)</p> | <p>11 PROP. MODIFIED URETHANE PVMT MARKING 4", 10' DASH 30' SKIP, YELLOW (TYP.)</p> <p>12 PROP. MODIFIED URETHANE PVMT MARKING 4", MEDIAN LINE, YELLOW (TYP.)</p> <p>13 PROP. MODIFIED URETHANE PVMT MARKING 8", CHANNELIZING LINE, WHITE (TYP.)</p> <p>14 PROP. MODIFIED URETHANE PVMT MARKING 12", GORE MARKING LINE, WHITE (TYP.)</p> <p>15 PROP. MODIFIED URETHANE PVMT MARKING 6", CROSSWALK, 2 @ 6' APART C-C, WHITE (TYP.)</p> |
|---|---|---|



MATCHLINE STA. 54+00.00

MATCHLINE STA. 69+00.00



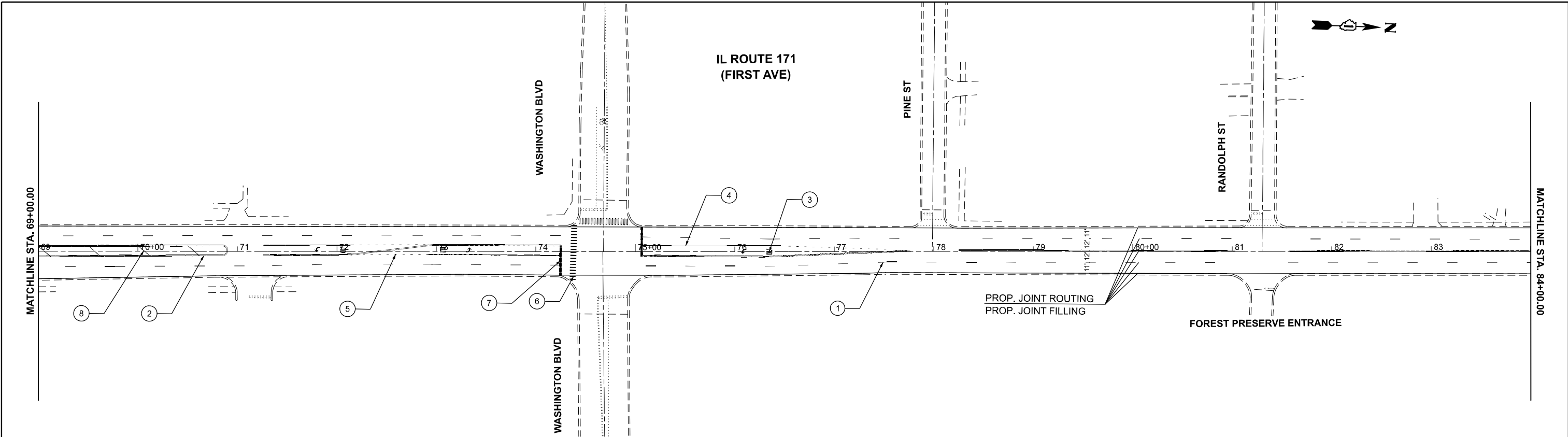
MODEL: EXCL - IL 171 (1st Ave)-2 (Sheet)
FILE NAME: c:\p\work\view\hassan\1131649\IL_171 (1st Ave)-shp-plan.dgn

USER NAME = naveed,hassan	DESIGNED -	REVISED -
	DRAWN -	REVISED -
	CHECKED -	REVISED -
PLOT DATE = 1/21/2026	DATE -	REVISED -

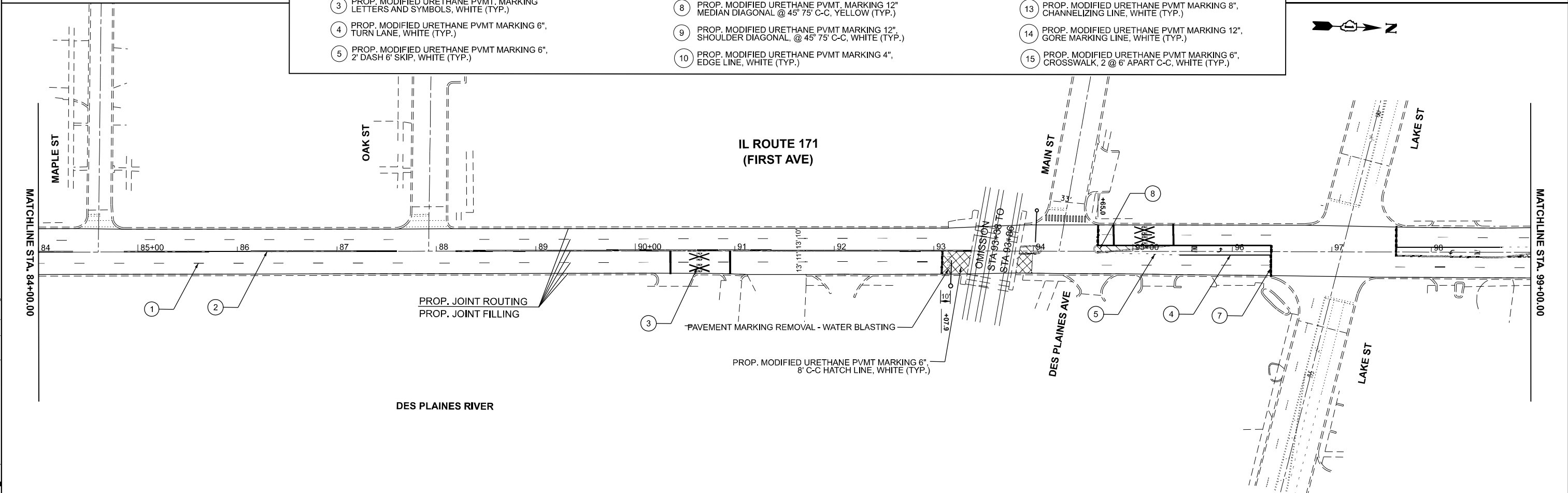
STATE OF ILLINOIS
DEPARTMENT OF TRANSPORTATION

ROADWAY PLAN
IL-171 (FIRST AVE.) FROM DES PLAINES RIVER TO FILMORE STREET
SCALE: 1"=50' SHEET 2 OF 7 SHEETS STA. 40+00.00 TO STA. 69+00.00

F.A.P. RTE.	SECTION	COUNTY	TOTAL SHEETS	SHEET NO.
372	FAP 0372 23 C&J	COOK	16	5
CONTRACT NO. 62V29				
ILLINOIS FED. AID PROJECT				



- | | | |
|--|--|---|
| 1 PROP. MODIFIED URETHANE PVMT MARKING 4", 10' DASH 30' SKIP, WHITE (TYP.) | 6 PROP. MODIFIED URETHANE PAVEMENT MARKING LINE, 12" CROSSWALK, WHITE 6' MIN (TYP.) | 11 PROP. MODIFIED URETHANE PVMT MARKING 4", 10' DASH 30' SKIP, YELLOW (TYP.) |
| 2 PROP. MODIFIED URETHANE PVMT MARKING 4", DOUBLE YELLOW @ 11" C-C (TYP.) | 7 PROP. MODIFIED URETHANE PVMT MARKING LINE, 24" STOPBAR, WHITE (TYP.) | 12 PROP. MODIFIED URETHANE PVMT MARKING 4", MEDIAN LINE, YELLOW (TYP.) |
| 3 PROP. MODIFIED URETHANE PVMT MARKING LETTERS AND SYMBOLS, WHITE (TYP.) | 8 PROP. MODIFIED URETHANE PVMT MARKING 12" MEDIAN DIAGONAL @ 45° 75' C-C, YELLOW (TYP.) | 13 PROP. MODIFIED URETHANE PVMT MARKING 8", CHANNELIZING LINE, WHITE (TYP.) |
| 4 PROP. MODIFIED URETHANE PVMT MARKING 6", TURN LANE, WHITE (TYP.) | 9 PROP. MODIFIED URETHANE PVMT MARKING 12", SHOULDER DIAGONAL, @ 45° 75' C-C, WHITE (TYP.) | 14 PROP. MODIFIED URETHANE PVMT MARKING 12", GORE MARKING LINE, WHITE (TYP.) |
| 5 PROP. MODIFIED URETHANE PVMT MARKING 6", 2' DASH 6' SKIP, WHITE (TYP.) | 10 PROP. MODIFIED URETHANE PVMT MARKING 4", EDGE LINE, WHITE (TYP.) | 15 PROP. MODIFIED URETHANE PVMT MARKING 6", CROSSWALK, 2 @ 6' APART C-C, WHITE (TYP.) |



MODEL: EXCL - IL 171 (1st Ave)-4 (Sheet)
 FILE NAME: c:\p\work\evr\10\hassan\113\649\IL-171 (1st Ave)-sh-4-plan.dgn

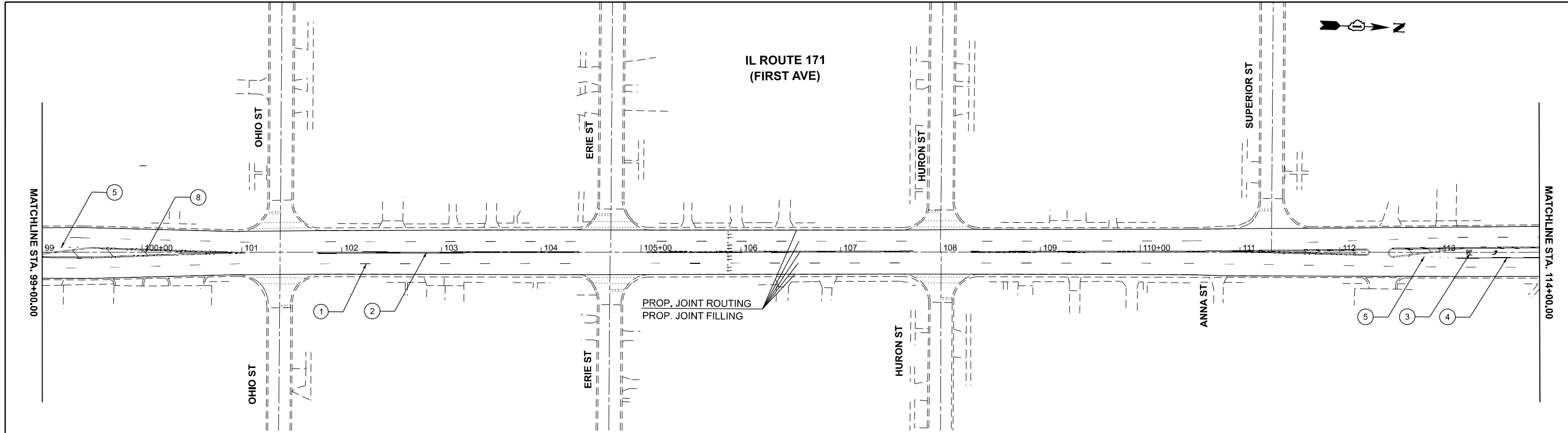
USER NAME = naveed.hassan	DESIGNED -	REVISED -
	DRAWN -	REVISED -
	CHECKED -	REVISED -
PLOT DATE = 1/21/2026	DATE -	REVISED -

STATE OF ILLINOIS
DEPARTMENT OF TRANSPORTATION

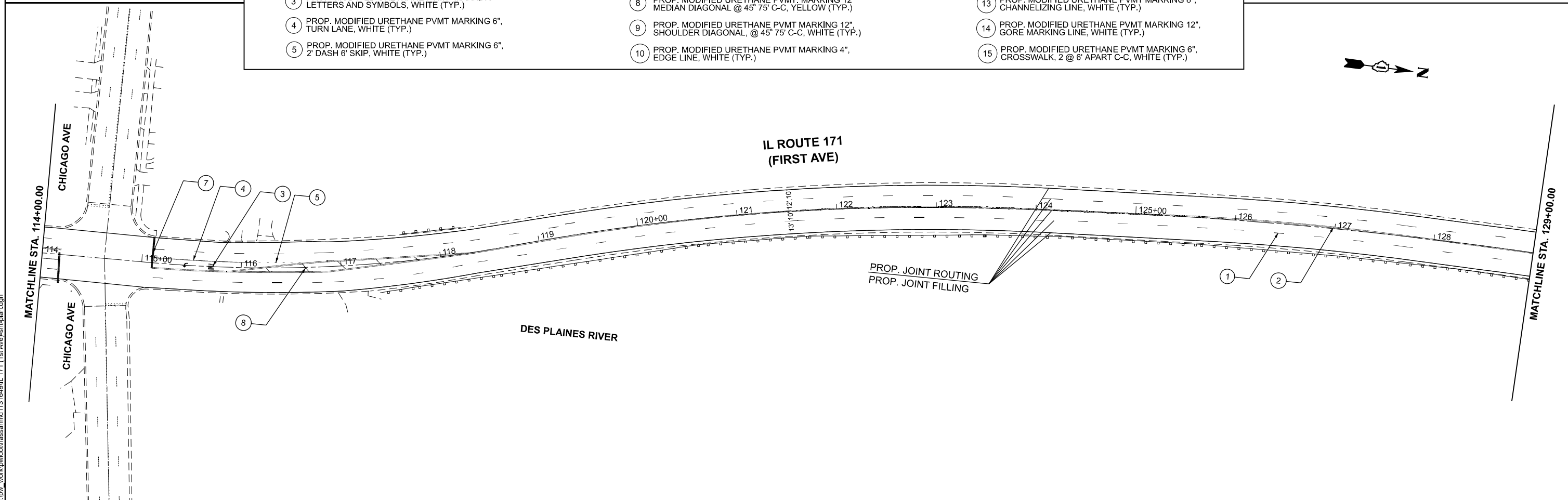
ROADWAY PLAN
IL-171 (FIRST AVE.) FROM DES PLAINES RIVER TO FILMORE STREET

SCALE: 1"=50' SHEET 3 OF 7 SHEETS STA. 69+00.00 TO STA. 99+00.00

F.A.P. RTE.	SECTION	COUNTY	TOTAL SHEETS	SHEET NO.
372	FAP 0372 23 C&J	COOK	16	6
CONTRACT NO. 62V29				
ILLINOIS FED. AID PROJECT				



- | | | |
|--|--|---|
| 1 PROP. MODIFIED URETHANE PVMT MARKING 4", 10' DASH 30' SKIP, WHITE (TYP.) | 6 PROP. MODIFIED URETHANE PAVEMENT MARKING LINE, 12" CROSSWALK, WHITE 6' MIN (TYP.) | 11 PROP. MODIFIED URETHANE PVMT MARKING 4", 10' DASH 30' SKIP, YELLOW (TYP.) |
| 2 PROP. MODIFIED URETHANE PVMT MARKING 4", DOUBLE YELLOW @ 11" C-C (TYP.) | 7 PROP. MODIFIED URETHANE PVMT MARKING LINE, 24" STOPBAR, WHITE (TYP.) | 12 PROP. MODIFIED URETHANE PVMT MARKING 4", MEDIAN LINE, YELLOW (TYP.) |
| 3 PROP. MODIFIED URETHANE PVMT. MARKING LETTERS AND SYMBOLS, WHITE (TYP.) | 8 PROP. MODIFIED URETHANE PVMT. MARKING 12" MEDIAN DIAGONAL @ 45° 75' C-C, YELLOW (TYP.) | 13 PROP. MODIFIED URETHANE PVMT MARKING 8", CHANNELIZING LINE, WHITE (TYP.) |
| 4 PROP. MODIFIED URETHANE PVMT MARKING 6", TURN LANE, WHITE (TYP.) | 9 PROP. MODIFIED URETHANE PVMT MARKING 12", SHOULDER DIAGONAL, @ 45° 75' C-C, WHITE (TYP.) | 14 PROP. MODIFIED URETHANE PVMT MARKING 12", GORE MARKING LINE, WHITE (TYP.) |
| 5 PROP. MODIFIED URETHANE PVMT MARKING 6", 2' DASH 6' SKIP, WHITE (TYP.) | 10 PROP. MODIFIED URETHANE PVMT MARKING 4", EDGE LINE, WHITE (TYP.) | 15 PROP. MODIFIED URETHANE PVMT MARKING 6", CROSSWALK, 2 @ 6' APART C-C, WHITE (TYP.) |



MODEL: EXCL - IL 171 (1st Ave)-S (Sheet)
 FILE NAME: c:\p\work\view\hassan\113\649\IL_171 (1st Ave)-sht-plan.dgn

USER NAME = naveed.hassan	DESIGNED -	REVISED -
	DRAWN -	REVISED -
	CHECKED -	REVISED -
PLOT DATE = 1/21/2026	DATE -	REVISED -

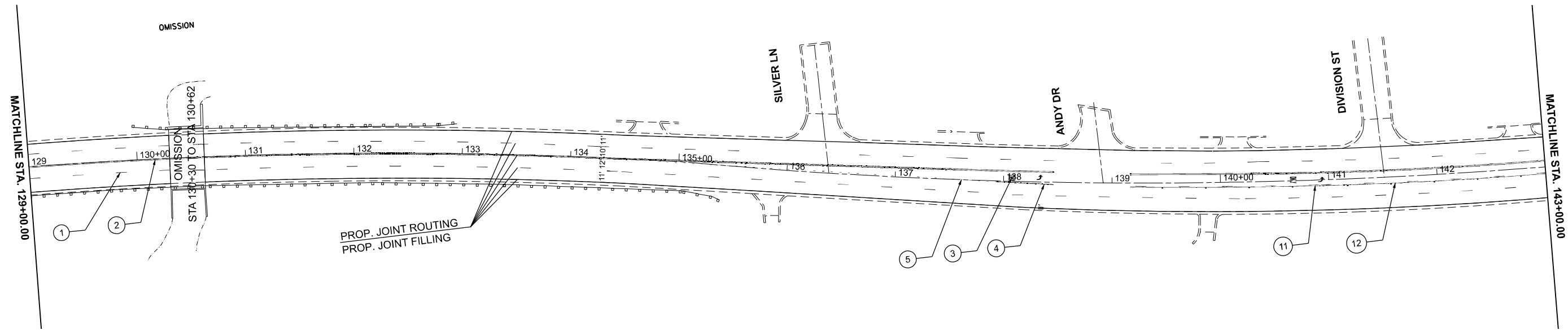
STATE OF ILLINOIS
DEPARTMENT OF TRANSPORTATION

ROADWAY PLAN
IL-171 (FIRST AVE.) FROM DES PLAINES RIVER TO FILMORE STREET

SCALE: 1"=50' SHEET 4 OF 7 SHEETS STA. 99+00.00 TO STA. 129+00.00

F.A.P. RTE.	SECTION	COUNTY	TOTAL SHEETS	SHEET NO.
372	FAP 0372 23 C&J	COOK	16	7
CONTRACT NO. 62V29				
ILLINOIS FED. AID PROJECT				

IL ROUTE 171
(FIRST AVE)



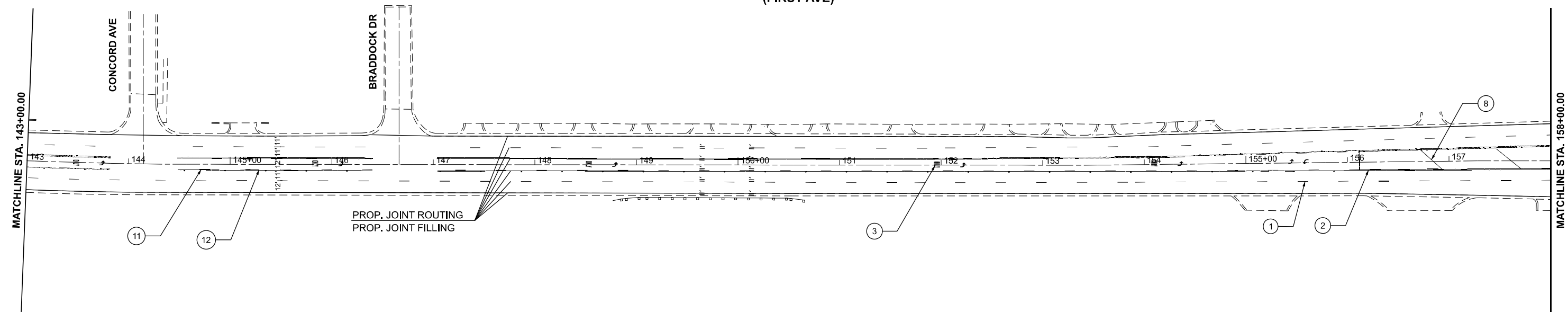
- ① PROP. MODIFIED URETHANE PVMT MARKING 4", 10' DASH 30' SKIP, WHITE (TYP.)
- ② PROP. MODIFIED URETHANE PVMT MARKING 4", DOUBLE YELLOW @ 11" C-C (TYP.)
- ③ PROP. MODIFIED URETHANE PVMT, MARKING LETTERS AND SYMBOLS, WHITE (TYP.)
- ④ PROP. MODIFIED URETHANE PVMT MARKING 6", TURN LANE, WHITE (TYP.)
- ⑤ PROP. MODIFIED URETHANE PVMT MARKING 6", 2' DASH 6' SKIP, WHITE (TYP.)

- ⑥ PROP. MODIFIED URETHANE PAVEMENT MARKING LINE, 12" CROSSWALK, WHITE 6" MIN (TYP.)
- ⑦ PROP. MODIFIED URETHANE PVMT MARKING LINE, 24" STOPBAR, WHITE (TYP.)
- ⑧ PROP. MODIFIED URETHANE PVMT, MARKING 12" MEDIAN DIAGONAL @ 45° 75' C-C, YELLOW (TYP.)
- ⑨ PROP. MODIFIED URETHANE PVMT MARKING 12", SHOULDER DIAGONAL, @ 45° 75' C-C, WHITE (TYP.)
- ⑩ PROP. MODIFIED URETHANE PVMT MARKING 4", EDGE LINE, WHITE (TYP.)

- ⑪ PROP. MODIFIED URETHANE PVMT MARKING 4", 10' DASH 30' SKIP, YELLOW (TYP.)
- ⑫ PROP. MODIFIED URETHANE PVMT MARKING 4", MEDIAN LINE, YELLOW (TYP.)
- ⑬ PROP. MODIFIED URETHANE PVMT MARKING 8", CHANNELIZING LINE, WHITE (TYP.)
- ⑭ PROP. MODIFIED URETHANE PVMT MARKING 12", GORE MARKING LINE, WHITE (TYP.)
- ⑮ PROP. MODIFIED URETHANE PVMT MARKING 6", CROSSWALK, 2 @ 6' APART C-C, WHITE (TYP.)



IL ROUTE 171
(FIRST AVE)



MODEL: EXCL - IL 171 (1st Ave)-S (Sheet)
FILE NAME: c:\p\work\171\171 (1st Ave)-S (Sheet).dgn

USER NAME = naveed.hassan	DESIGNED -	REVISED -
	DRAWN -	REVISED -
	CHECKED -	REVISED -
PLOT DATE = 1/21/2026	DATE -	REVISED -

STATE OF ILLINOIS
DEPARTMENT OF TRANSPORTATION

ROADWAY PLAN
IL-171 (FIRST AVE,) FROM DES PLAINES RIVER TO FILMORE STREET

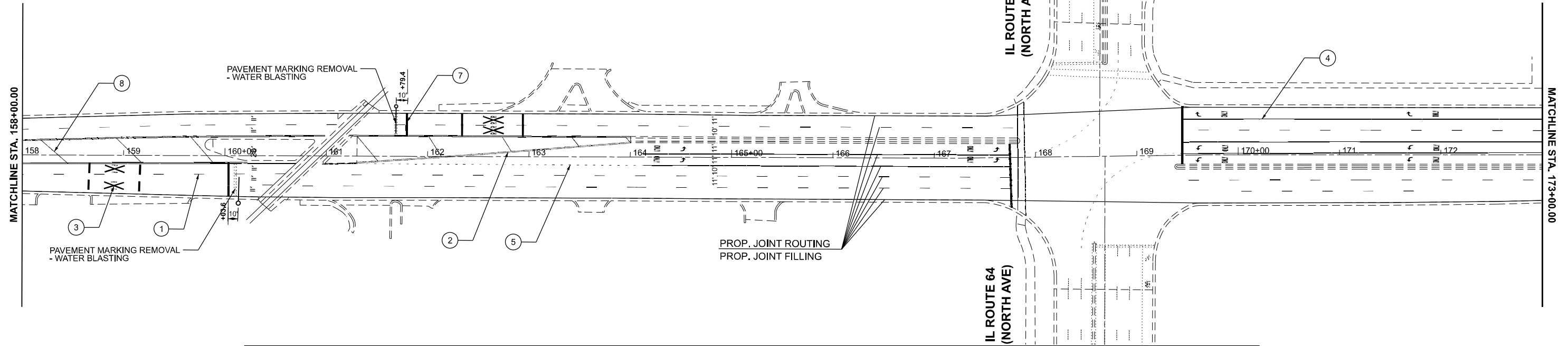
SCALE: 1"=50' SHEET 5 OF 7 SHEETS STA. 129+00.00 TO STA. 158+00.00

F.A.P. RTE.	SECTION	COUNTY	TOTAL SHEETS	SHEET NO.
372	FAP 0372 23 C&J	COOK	16	8
CONTRACT NO. 62V29				
ILLINOIS FED. AID PROJECT				

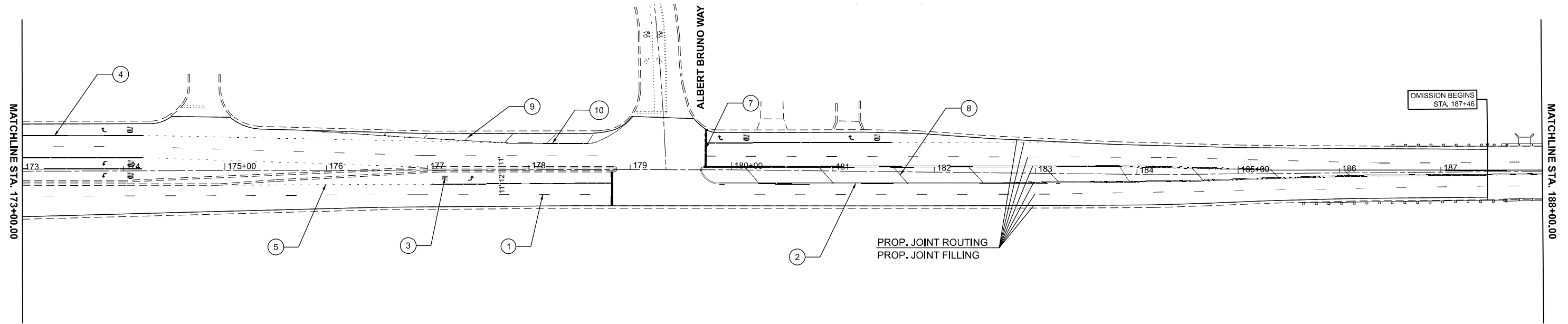
IL ROUTE 171
(FIRST AVE)

IL ROUTE 64
(NORTH AVE)

IL ROUTE 64
(NORTH AVE)



- | | | | | | |
|---|--|----|--|----|--|
| 1 | PROP. MODIFIED URETHANE PVMT MARKING 4", 10' DASH 30' SKIP, WHITE (TYP.) | 6 | PROP. MODIFIED URETHANE PAVEMENT MARKING LINE, 12" CROSSWALK, WHITE 6' MIN (TYP.) | 11 | PROP. MODIFIED URETHANE PVMT MARKING 4", 10' DASH 30' SKIP, YELLOW (TYP.) |
| 2 | PROP. MODIFIED URETHANE PVMT MARKING 4", DOUBLE YELLOW @ 11" C-C (TYP.) | 7 | PROP. MODIFIED URETHANE PVMT MARKING LINE, 24" STOPBAR, WHITE (TYP.) | 12 | PROP. MODIFIED URETHANE PVMT MARKING 4", MEDIAN LINE, YELLOW (TYP.) |
| 3 | PROP. MODIFIED URETHANE PVMT. MARKING LETTERS AND SYMBOLS, WHITE (TYP.) | 8 | PROP. MODIFIED URETHANE PVMT. MARKING 12" MEDIAN DIAGONAL @ 45° 75' C-C, YELLOW (TYP.) | 13 | PROP. MODIFIED URETHANE PVMT MARKING 8", CHANNELIZING LINE, WHITE (TYP.) |
| 4 | PROP. MODIFIED URETHANE PVMT MARKING 6", TURN LANE, WHITE (TYP.) | 9 | PROP. MODIFIED URETHANE PVMT MARKING 12", SHOULDER DIAGONAL, @ 45° 75' C-C, WHITE (TYP.) | 14 | PROP. MODIFIED URETHANE PVMT MARKING 12", GORE MARKING LINE, WHITE (TYP.) |
| 5 | PROP. MODIFIED URETHANE PVMT MARKING 6", 2' DASH 6' SKIP, WHITE (TYP.) | 10 | PROP. MODIFIED URETHANE PVMT MARKING 4", EDGE LINE, WHITE (TYP.) | 15 | PROP. MODIFIED URETHANE PVMT MARKING 6", CROSSWALK, 2 @ 6' APART C-C, WHITE (TYP.) |



MODEL: EXCL - IL 171 (1st Ave)-10 (Sheet)
FILE NAME: c:\p\work\171\171 (1st Ave)-shp-plan.dgn

USER NAME = naveed.hassan	DESIGNED -	REVISED -
	DRAWN -	REVISED -
	CHECKED -	REVISED -
PLOT DATE = 1/21/2026	DATE -	REVISED -

STATE OF ILLINOIS
DEPARTMENT OF TRANSPORTATION

ROADWAY PLAN
IL-171 (FIRST AVE.) FROM DES PLAINES RIVER TO FILMORE STREET

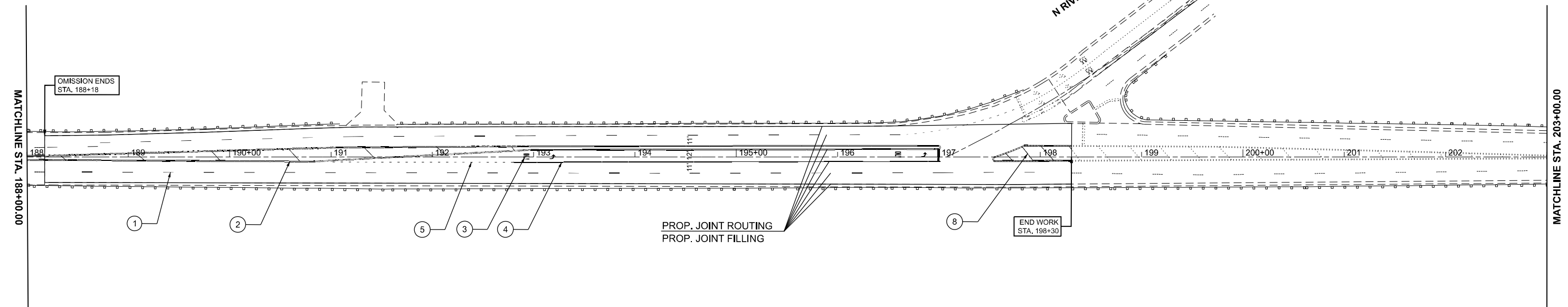
SCALE: 1"=50' SHEET 6 OF 7 SHEETS STA. 158+00.00 TO STA. 188+00.00

F.A.P RTE.	SECTION	COUNTY	TOTAL SHEETS	SHEET NO.
372	FAP 0372 23 C&J	COOK	16	9
CONTRACT NO. 62V29				
ILLINOIS FED. AID PROJECT				



IL ROUTE 171
(FIRST AVE)

N RIVER RD



- | | | |
|--|--|---|
| 1 PROP. MODIFIED URETHANE PVTM MARKING 4", 10' DASH 30' SKIP, WHITE (TYP.) | 6 PROP. MODIFIED URETHANE PAVEMENT MARKING LINE, 12" CROSSWALK, WHITE 6' MIN (TYP.) | 11 PROP. MODIFIED URETHANE PVTM MARKING 4", 10' DASH 30' SKIP, YELLOW (TYP.) |
| 2 PROP. MODIFIED URETHANE PVTM MARKING 4", DOUBLE YELLOW @ 11" C-C (TYP.) | 7 PROP. MODIFIED URETHANE PVTM MARKING LINE, 24" STOPBAR, WHITE (TYP.) | 12 PROP. MODIFIED URETHANE PVTM MARKING 4", MEDIAN LINE, YELLOW (TYP.) |
| 3 PROP. MODIFIED URETHANE PVTM MARKING LETTERS AND SYMBOLS, WHITE (TYP.) | 8 PROP. MODIFIED URETHANE PVTM MARKING 12" MEDIAN DIAGONAL @ 45° 75' C-C, YELLOW (TYP.) | 13 PROP. MODIFIED URETHANE PVTM MARKING 8", CHANNELIZING LINE, WHITE (TYP.) |
| 4 PROP. MODIFIED URETHANE PVTM MARKING 6", TURN LANE, WHITE (TYP.) | 9 PROP. MODIFIED URETHANE PVTM MARKING 12", SHOULDER DIAGONAL, @ 45° 75' C-C, WHITE (TYP.) | 14 PROP. MODIFIED URETHANE PVTM MARKING 12", GORE MARKING LINE, WHITE (TYP.) |
| 5 PROP. MODIFIED URETHANE PVTM MARKING 6", 2' DASH 6' SKIP, WHITE (TYP.) | 10 PROP. MODIFIED URETHANE PVTM MARKING 4", EDGE LINE, WHITE (TYP.) | 15 PROP. MODIFIED URETHANE PVTM MARKING 6", CROSSWALK, 2 @ 6' APART C-C, WHITE (TYP.) |

MODEL: EXCL - IL 171 (1st Ave)-12 (Sheet)
FILE NAME: c:\p\work\171\171 (1st Ave)-sheet-plan.dgn

USER NAME = naveed.hassan	DESIGNED -	REVISED -
	DRAWN -	REVISED -
	CHECKED -	REVISED -
PLOT DATE = 1/21/2026	DATE -	REVISED -

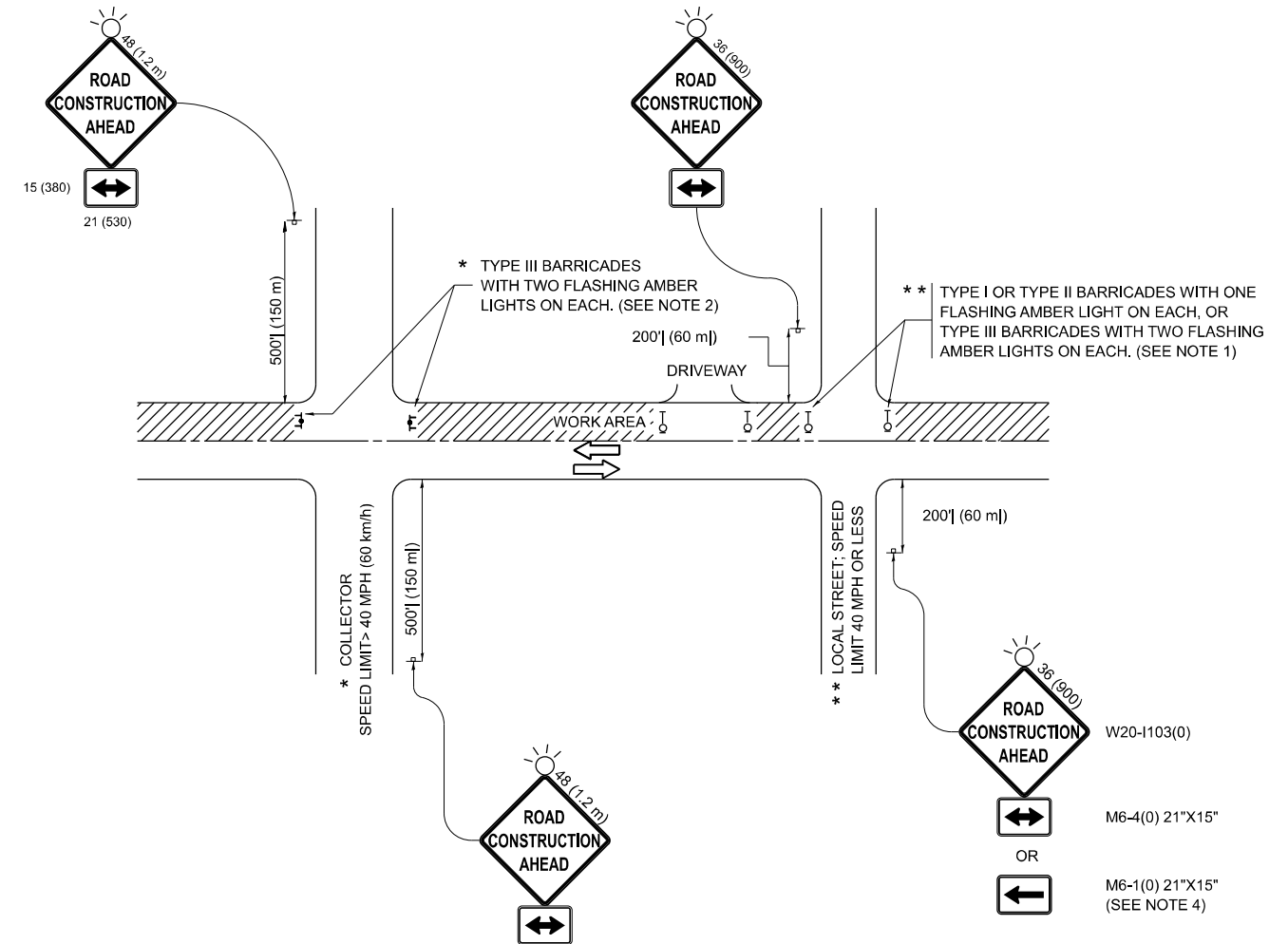
STATE OF ILLINOIS
DEPARTMENT OF TRANSPORTATION

ROADWAY PLAN
IL-171 (FIRST AVE.) FROM DES PLAINES RIVER TO FILMORE STREET

SCALE: 1"=50' SHEET 7 OF 7 SHEETS STA. 188+00.00 TO STA. 218+00.00

F.A.P RTE.	SECTION	COUNTY	TOTAL SHEETS	SHEET NO.
372	FAP 0372 23 C&J	COOK	16	10
CONTRACT NO. 62V29				
ILLINOIS FED. AID PROJECT				

MODEL: TC_10 (Sheet)
 FILE NAME: c:\p\work\pwr\hassan\1131649\1171 (1st Ave)shl-DistSigs.dgn



NOTES:

1. SIDE ROAD WITH A SPEED LIMIT OF 40 MPH (60 km/h) OR LESS AS SHOWN ON THE DRAWING AND AS DIRECTED BY THE ENGINEER:
 - a) ONE "ROAD CONSTRUCTION AHEAD" SIGN 36 x 36 (900x900) WITH A FLASHER MOUNTED ON IT APPROXIMATELY 200' (60 m) IN ADVANCE OF THE MAIN ROUTE.
 - b) THE CLOSED PORTION OF THE MAIN ROUTE SHALL BE PROTECTED BY BLOCKING WITH TYPE I, TYPE II OR TYPE III BARRICADES, 1/3 OF THE CROSS SECTION OF THE CLOSED PORTION.
2. SIDE ROAD WITH A SPEED LIMIT GREATER THAN 40 MPH (60 km/h) AS SHOWN ON THE DRAWING AND AS DIRECTED BY THE ENGINEER:
 - a) ONE "ROAD CONSTRUCTION AHEAD" SIGN 48 x 48 (1.2 m x 1.2 m) WITH A FLASHER MOUNTED ON IT APPROXIMATELY 500' (150 m) IN ADVANCE OF THE MAIN ROUTE.
 - b) THE CLOSED PORTION OF THE MAIN ROUTE SHALL BE PROTECTED BY BLOCKING WITH TYPE III BARRICADES, 1/2 OF THE CROSS SECTION OF THE CLOSED PORTION.
3. CONES MAY BE SUBSTITUTED FOR BARRICADES OR DRUMS AT HALF THE SPACING DURING DAY OPERATIONS. CONES SHALL BE A MINIMUM OF 28 (710) IN HEIGHT.
4. WHEN THE SIDE ROAD LIES BETWEEN THE BEGINNING OF THE MAINLINE SIGNING AND THE WORK ZONE, A SINGLE HEADED ARROW (M6-1) SHALL BE USED IN LIEU OF THE DOUBLE HEADED ARROW (M6-4).
5. WHEN WORK IS BEING PERFORMED ON A SIDE ROAD OR DRIVEWAY, FOLLOW THE APPLICABLE STANDARD(S). THE DIRECTIONAL ARROW (M6-1 OR M6-4) SHALL BE COVERED OR REMOVED WHEN NO LONGER CONSISTENT WITH THE TRAFFIC CONTROL SET-UP.
6. ADVANCE WARNING SIGNS ARE TO BE OMITTED ON DRIVEWAYS UNLESS OTHERWISE SPECIFIED IN THE PLANS OR BY THE ENGINEER.
7. THE TRAFFIC CONTROL AND PROTECTION FOR SIDE ROADS, INTERSECTIONS, AND DRIVEWAYS SHALL BE INCLUDED IN THE COST OF SPECIFIED TRAFFIC CONTROL STANDARDS OR ITEMS.

All dimensions are in inches (millimeters) unless otherwise shown.

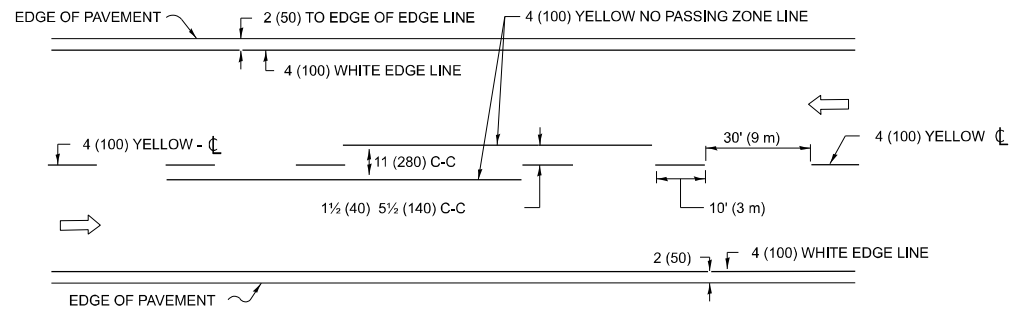
USER NAME = naveed.hassan	DESIGNED - L.H.A.	REVISED - T. RAMMACHER 01-06-00
	DRAWN -	REVISED - A. SCHUETZE 07-01-13
	CHECKED -	REVISED - A. SCHUETZE 09-15-06
PLOT DATE = 1/21/2026	DATE - 06-89	REVISED - D. SENDERAK 05-03-25

**STATE OF ILLINOIS
 DEPARTMENT OF TRANSPORTATION**

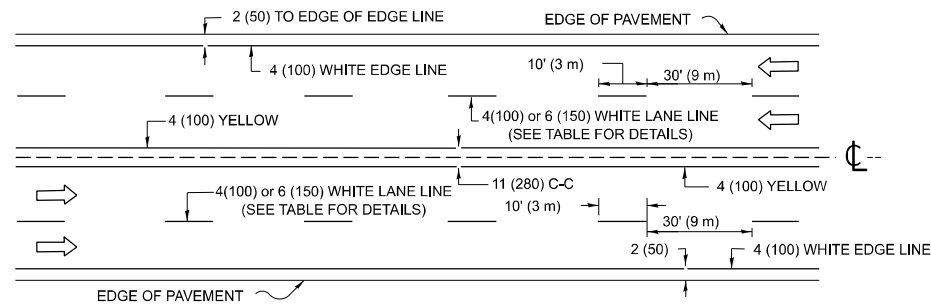
**TRAFFIC CONTROL AND PROTECTION FOR
 SIDE ROADS, INTERSECTIONS, AND DRIVEWAYS**

SCALE: SHEET A001 OF 6 SHEETS STA. TO STA.

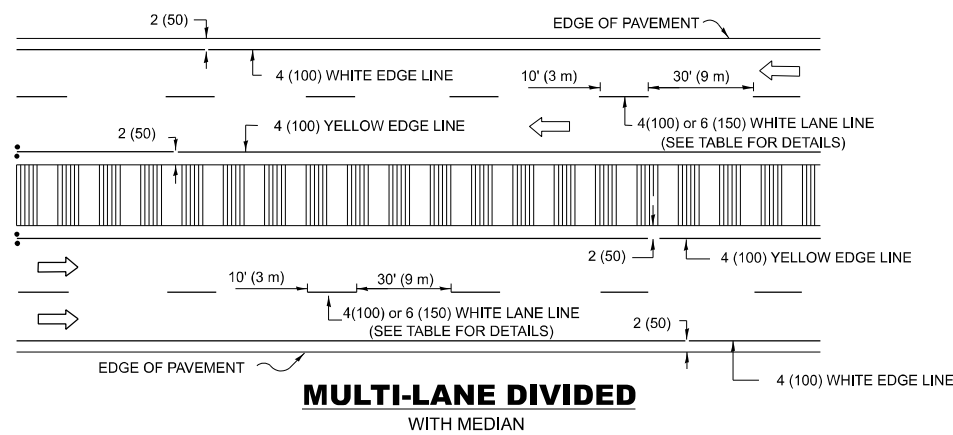
F.A.P. RTE.	SECTION	COUNTY	TOTAL SHEETS	SHEET NO.
372	FAP 0372 23 C&J	COOK	16	11
TC-10			CONTRACT NO. 62V29	
ILLINOIS FED. AID PROJECT				



2-LANE ROADWAY

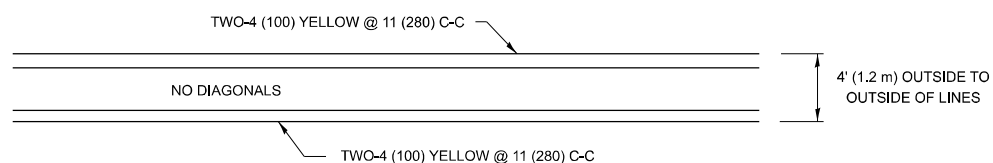


MULTI-LANE UNDIVIDED

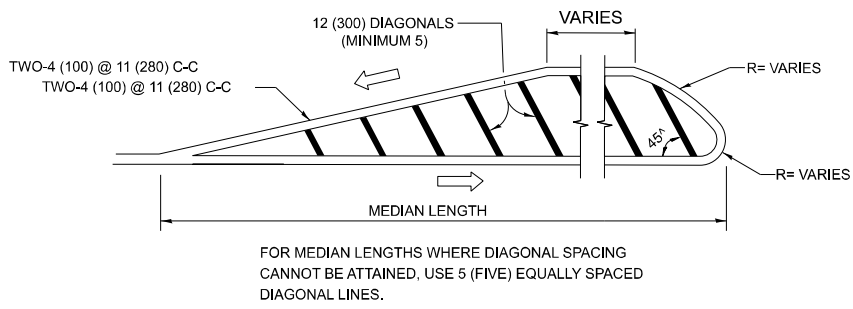


MULTI-LANE DIVIDED WITH MEDIAN

TYPICAL LANE AND EDGE LINE MARKING

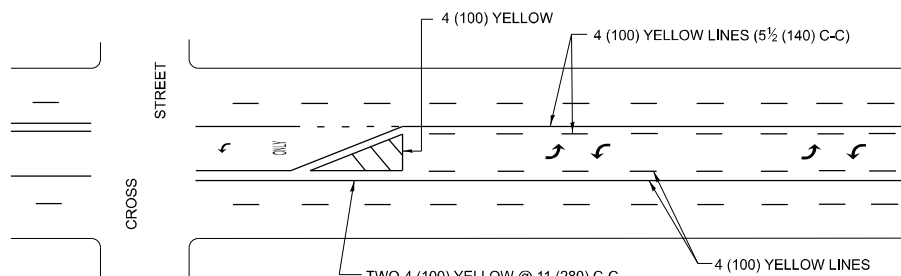


4' (1.2 m) WIDE MEDIANS ONLY

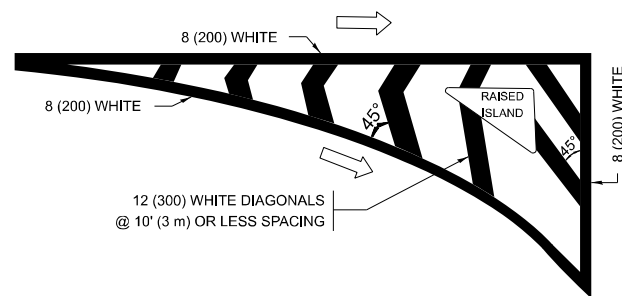


DIAGONAL LINE SPACING: 50' (15 m) C-C (LESS THAN 30MPH (50 km/h))
75' (25 m) C-C 30MPH (50 km/h) TO 45MPH (70 km/h)
150' (45 m) C-C (MORE THAN 45MPH (70 km/h))

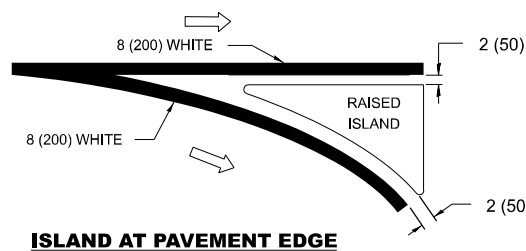
MEDIANS OVER 4' (1.2 m) WIDE



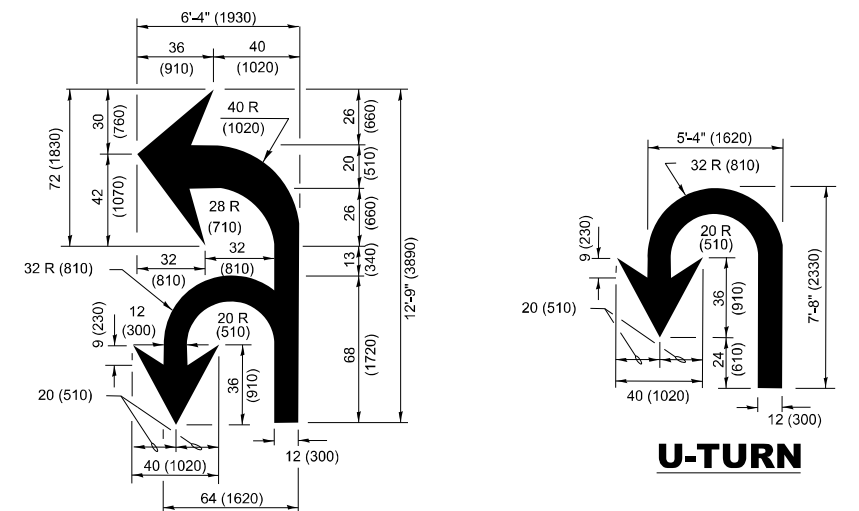
MEDIAN WITH TWO-WAY LEFT TURN LANE TYPICAL PAINTED MEDIAN MARKING



ISLAND OFFSET FROM PAVEMENT EDGE

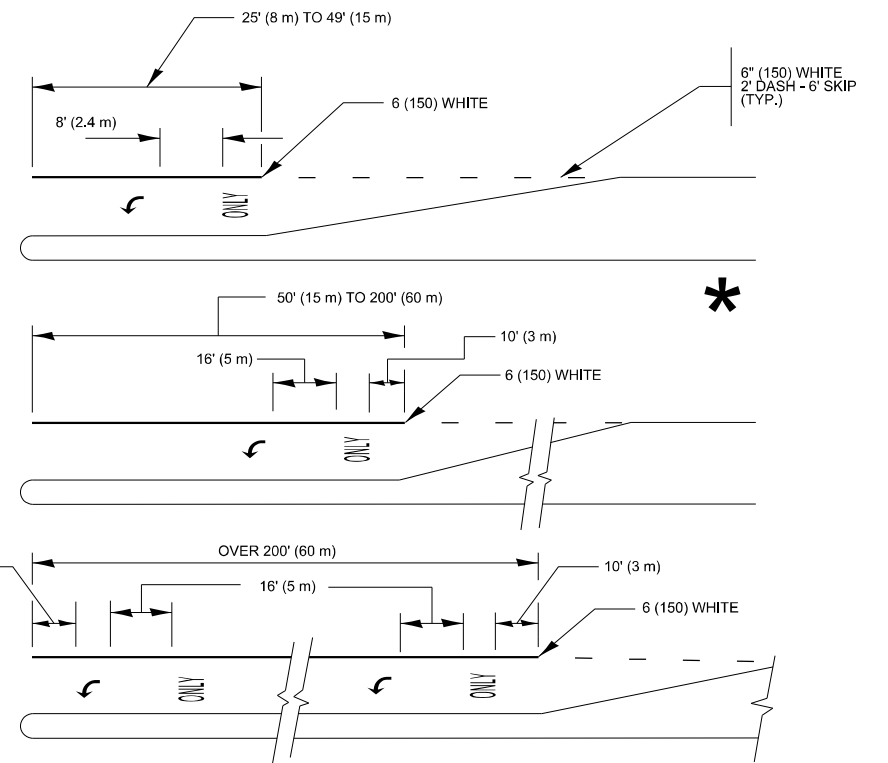


ISLAND AT PAVEMENT EDGE TYPICAL ISLAND MARKING



U-TURN

COMBINATION LEFT AND U-TURN



FULL SIZE LETTERS 8' (2.4 m) AND ARROWS SHALL BE USED.

AREA = 15.6 SQ. FT. (1.5 m²) ONLY AREA = 20.8 SQ. FT. (1.9 m²)

* TURN LANES IN EXCESS OF 400' (120 m) IN LENGTH MAY HAVE AN ADDITIONAL SET OF ARROW - "ONLY" INSTALLED MIDWAY BETWEEN THE OTHER TWO SETS OF ARROW - "ONLY".

TYPICAL LEFT (OR RIGHT) TURN LANE MARKING

MODEL: TC-13 (Sheet)
FILE NAME: c:\p\work\vw\hassan\11316491L171 (1st Ave)shh-DistSigs.dgn

USER NAME = naveed.hassan	DESIGNED - EVERS	REVISED - C. JUCIUS 07-01-13
	DRAWN -	REVISED - C. JUCIUS 12-21-15
	CHECKED -	REVISED - C. JUCIUS 04-12-16
PLOT DATE = 1/21/2026	DATE - 03-19-90	REVISED - P. KENENAKHONE 05-01-26

STATE OF ILLINOIS
DEPARTMENT OF TRANSPORTATION

DISTRICT ONE
TYPICAL PAVEMENT MARKINGS

SCALE: NONE SHEET A002 OF 6 SHEETS STA. TO STA.

F.A.P RTE.	SECTION	COUNTY	TOTAL SHEETS	SHEET NO.
372	FAP 0372 23 C&J	COOK	16	12
TC-13A		CONTRACT NO. 62V29		
ILLINOIS FED. AID PROJECT				

TURN BAY ENTRANCE AT START OF LANE CLOSURE TAPER

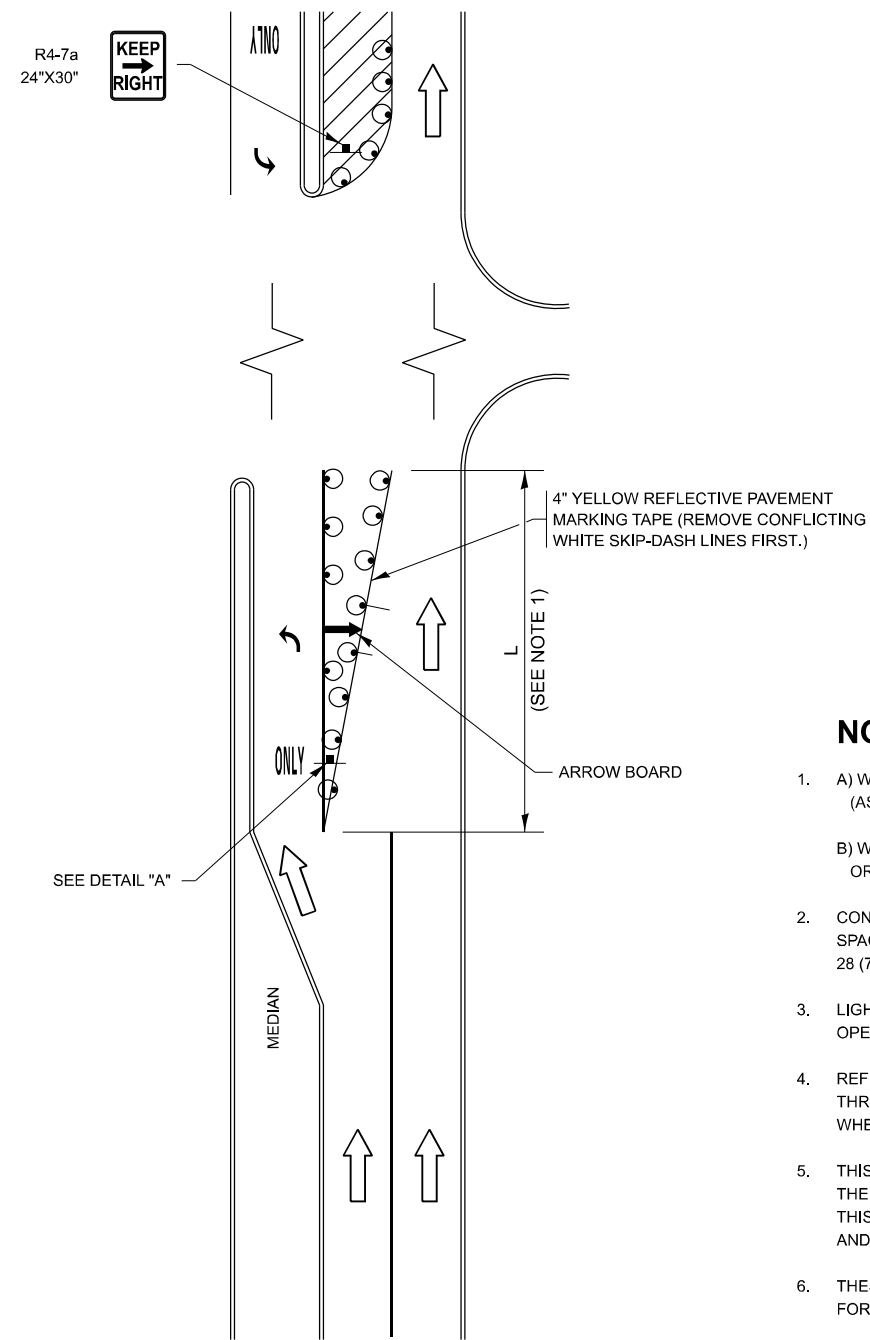


FIGURE 1

TURN BAY ENTRANCE WITHIN A LANE CLOSURE

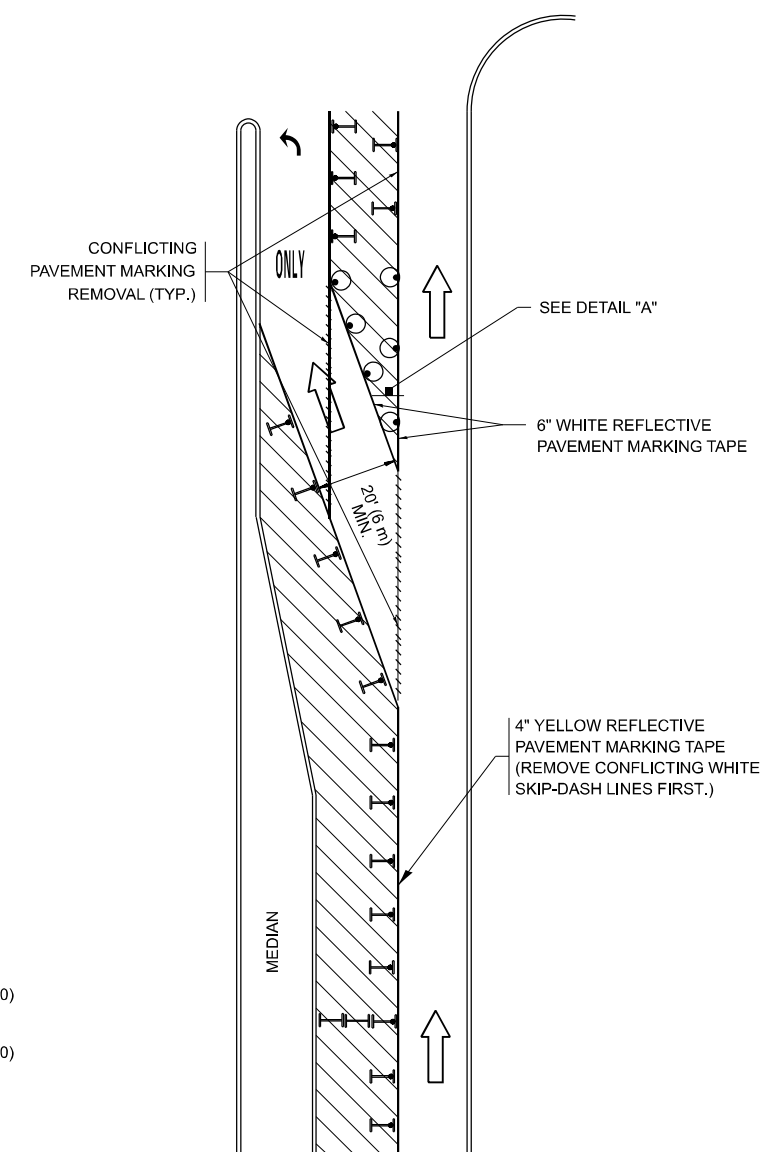


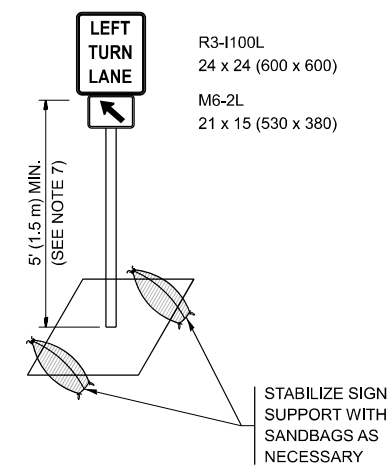
FIGURE 2

LEGEND

- WORK AREA
- LANE OPEN TO TRAFFIC
- ARROW BOARD
- TYPE I OR II BARRICADE OR DRUM WITH STEADY BURN LIGHT
- DRUM WITH STEADY BURN LIGHT
- SIGN ASSEMBLY
- TYPE I OR II CHECK BARRICADE WITH FLASHING LIGHT

NOTES:

1. A) WHEN "L" IS \leq THE STORAGE LENGTH OF THE TURN LANE (AS SHOWN IN FIG. 1), USE FIGURE 1.
B) WHEN "L" IS $>$ THE STORAGE LENGTH OF THE TURN LANE OR THE TURN LANE IS WITHIN THE LANE CLOSURE, USE FIGURE 2.
2. CONES MAY BE SUBSTITUTED FOR BARRICADES OR DRUMS AT HALF THE SPACING DURING DAY OPERATIONS. CONES SHALL BE A MINIMUM OF 28 (710) IN HEIGHT.
3. LIGHTS WILL NOT BE REQUIRED ON BARRICADES OR DRUMS FOR DAY OPERATIONS. ALL LIGHTS SHALL BE MONODIRECTIONAL.
4. REFLECTIVE TEMPORARY PAVEMENT MARKINGS SHALL BE PLACED THROUGHOUT THE BARRICADED AREAS OF EACH TURN BAY AS SHOWN WHERE THE CLOSURE TIME IS GREATER THAN FOURTEEN (14) DAYS.
5. THIS APPLICATION ALSO APPLIES WHEN WORK IS BEING PERFORMED IN THE RIGHT LANE(S) AND THE RIGHT TURN BAY IS TO REMAIN OPEN. UNDER THIS CONDITION, "RIGHT TURN LANE" R3-1100R 24 x 24 (600 x 600) AND M6-2R 21 x 15 (530 x 380) SHALL BE USED.
6. THESE CONTROLS SHALL SUPPLEMENT MAINLINE TRAFFIC CONTROL FOR LANE CLOSURES.
7. THE SIGNS SHALL BE MOUNTED ABOVE THE BARRICADES/DRUMS ON SEPARATE SIGN SUPPORTS THAT MEET NCHRP 350 OR MASH REQUIREMENTS.
8. TRAFFIC CONTROL AND PROTECTION AT TURN BAYS (TO REMAIN OPEN TO TRAFFIC) SHALL BE INCLUDED IN THE COST OF SPECIFIED TRAFFIC CONTROL STANDARDS OR ITEMS.



DETAIL A

All dimensions are in inches (millimeters) unless otherwise shown.

MODEL: TC_14 (Sheet)
FILE NAME: c:\p\work\hassan\11316491L_171 (1st Ave)-sh-DisStds.dgn

USER NAME = naveed,hassan	DESIGNED - T. RAMMACHER 09-08-94	REVISED - R. BORO 09-14-09
	DRAWN - A. HOUSEH 11-07-95	REVISED - A. SCHUETZE 07-01-13
	CHECKED - A. HOUSEH 10-12-96	REVISED - A. SCHUETZE 09-15-16
PLOT DATE = 1/21/2026	DATE - T. RAMMACHER 01-06-00	REVISED -

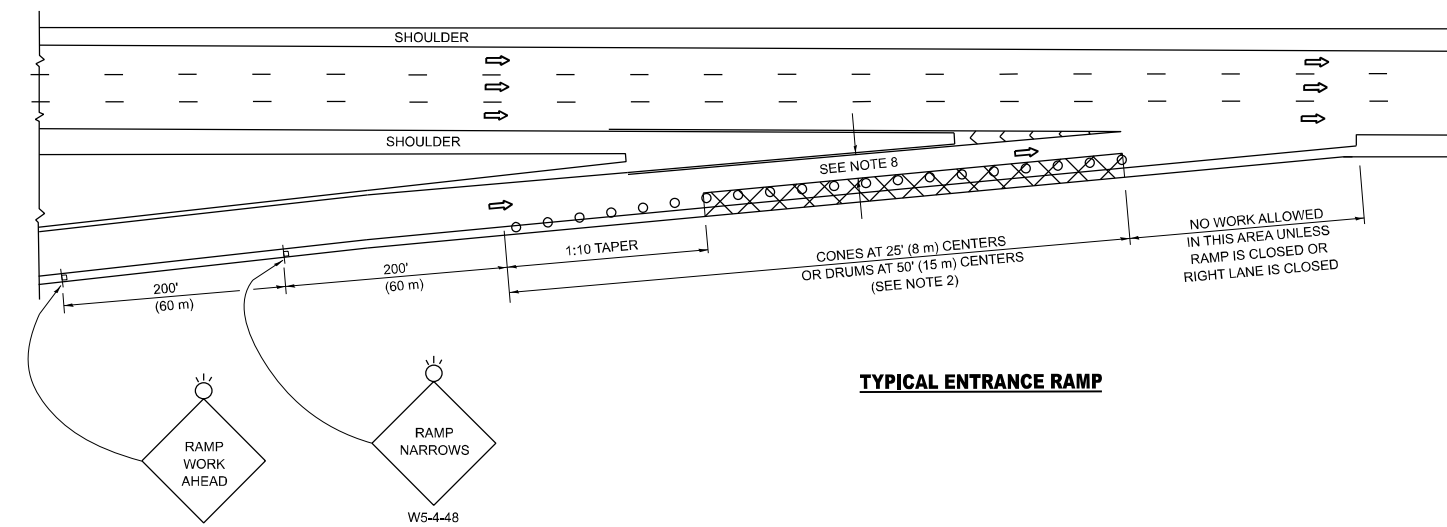
STATE OF ILLINOIS
DEPARTMENT OF TRANSPORTATION

TRAFFIC CONTROL AND PROTECTION AT TURN BAYS
(TO REMAIN OPEN TO TRAFFIC)

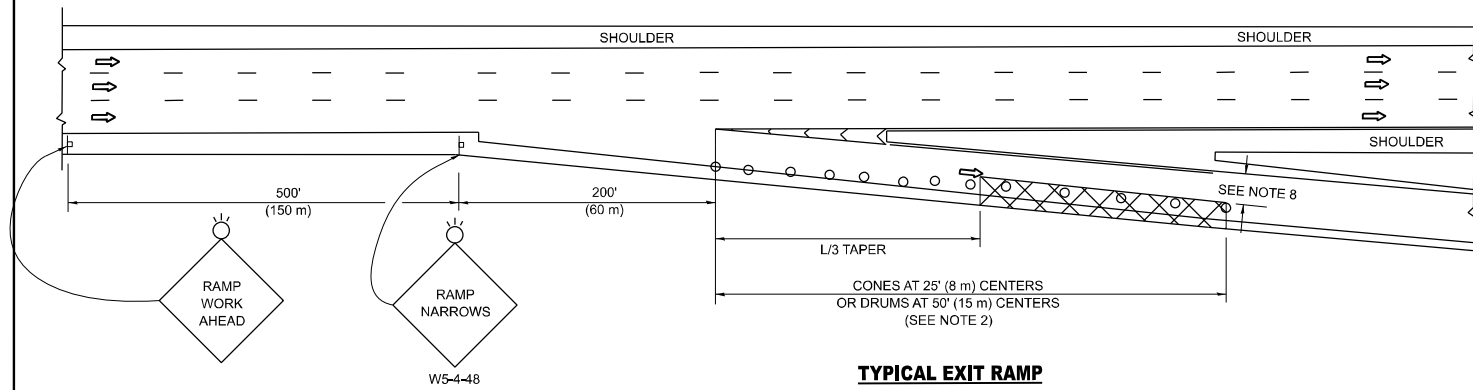
SCALE: NONE SHEET #003 OF 6 SHEETS STA. TO STA.

F.A.P. RTE.	SECTION	COUNTY	TOTAL SHEETS	SHEET NO.
372	FAP 0372 23 C&J	COOK	16	13
TC-14		CONTRACT NO. 62V29		
ILLINOIS FED. AID PROJECT				

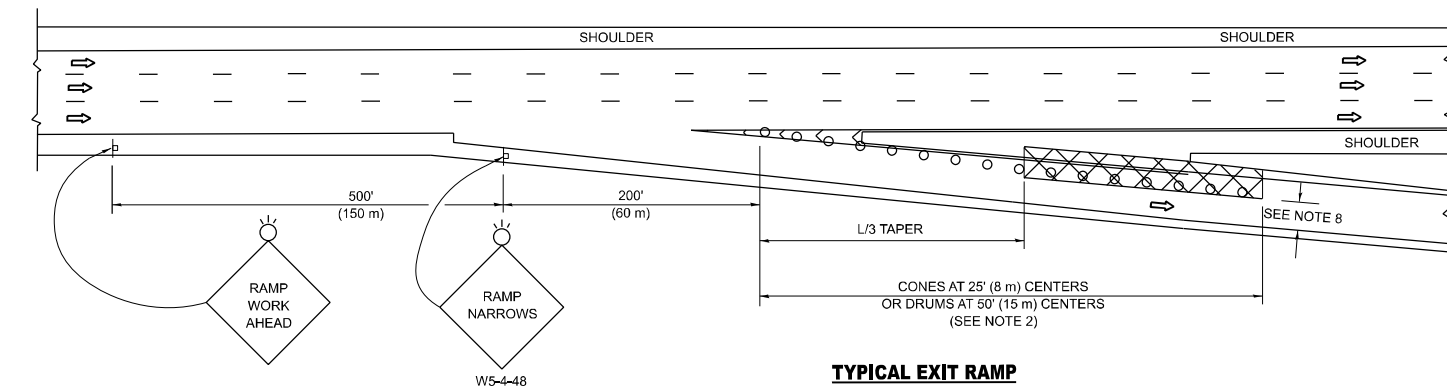
PARTIAL RAMP CLOSURE DETAILS



TYPICAL ENTRANCE RAMP



TYPICAL EXIT RAMP



TYPICAL EXIT RAMP

SYMBOLS

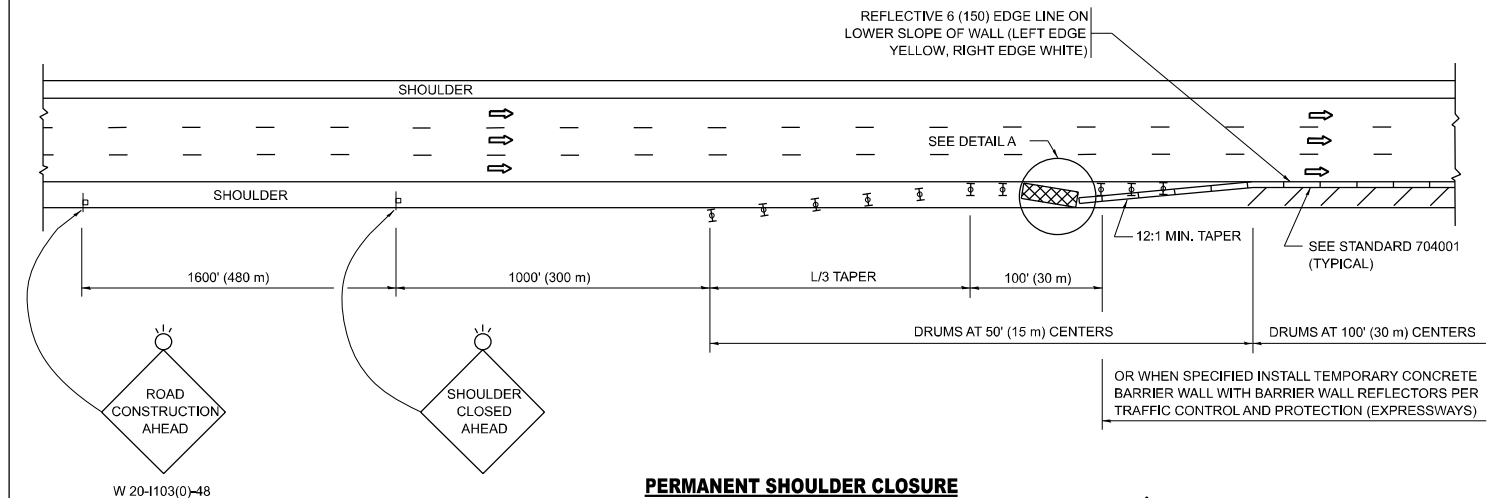
- ACTIVE WORK AREA
- SIGN ON PORTABLE OR PERMANENT SUPPORT
- FLAGGER WITH CONTROL SIGN
- TYPE II BARRICADE OR DRUM
- CONE, DRUM OR BARRICADE
- IMPACT ATTENUATOR OF TYPE AND TEST LEVEL SPECIFIED

GENERAL NOTES:

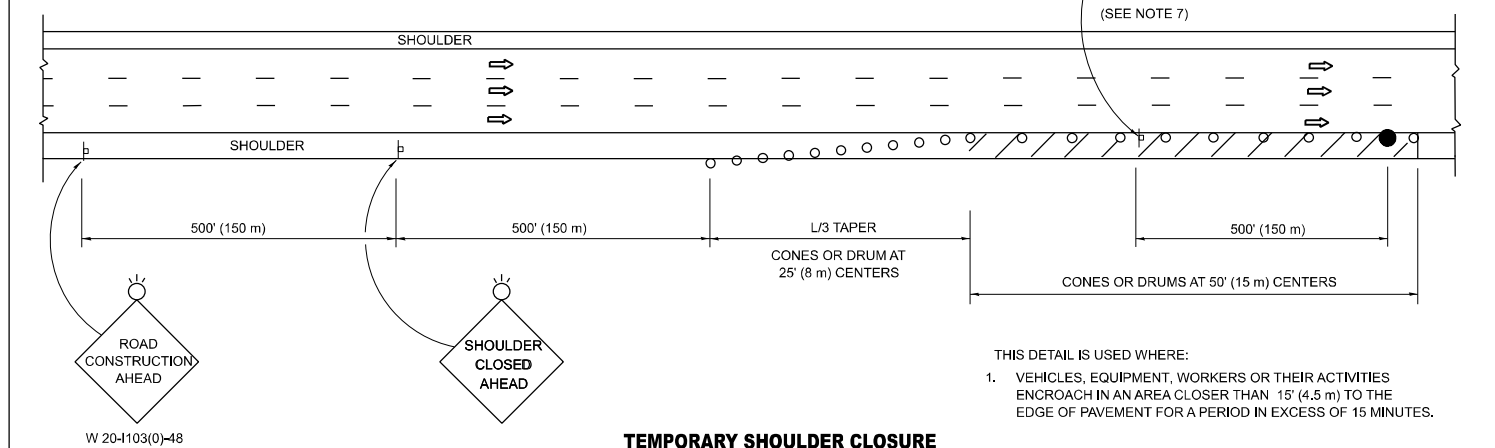
- THE "L" DISTANCE EQUALS:

SPEED LIMIT	FORMULAS
45 mph (80 km/h) OR GREATER:	METRIC ENGLISH L=0.65(W)(S) L=(W)(S)
W = WIDTH OF OFFSET IN FEET (METERS)	
S = NORMAL POSTED SPEED MPH (KM/H)	
- TYPE II BARRICADES OR DRUMS ARE REQUIRED FOR ALL NIGHTTIME CLOSURES. TYPE II BARRICADES OR DRUMS WITH MONODIRECTIONAL STEADY BURN LIGHTS ARE REQUIRED FOR DELINEATING OBSTACLES, EXCAVATIONS, OR HAZARDS EXCEEDING 100 FT (30m) IN LENGTH AT NIGHT.
- ALL SIGNS SHALL BE POST MOUNTED IF THE CLOSURE TIME EXCEEDS FOUR DAYS.
- FLASHING LIGHTS SHALL BE USED DURING THE HOURS OF DARKNESS AND SHALL BE INSTALLED ABOVE THE FIRST TWO SETS OF SIGNS.

SHOULDER CLOSURE DETAILS

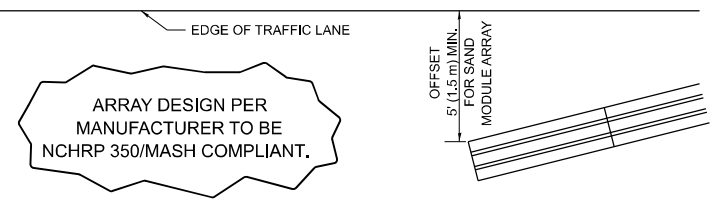


PERMANENT SHOULDER CLOSURE



TEMPORARY SHOULDER CLOSURE

- THIS DETAIL IS USED WHERE:
- VEHICLES, EQUIPMENT, WORKERS OR THEIR ACTIVITIES ENCR OACH IN AN AREA CLOSER THAN 15' (4.5 m) TO THE EDGE OF PAVEMENT FOR A PERIOD IN EXCESS OF 15 MINUTES.



**DETAIL "A"
IMPACT ATTENUATOR, TEMPORARY
(SEE NOTE 5)**

- THE IMPACT ATTENUATOR, TEMPORARY IS NOT REQUIRED WHEN THE TEMPORARY CONCRETE BARRIER WALL IS PROTECTED BY OR IS TIED INTO THE EXISTING GUARDRAIL. IF OFFSET IS LESS THAN 5 FEET USE NARROW USE TYPE DEVICE TO MEET NCHRP350/MASH.
- AUTHORIZATION FROM THE DISTRICT'S BUREAU OF TRAFFIC IS REQUIRED FOR ALL FREEWAY CLOSURES.
- THE FLAGGER AND FLAGGER SIGN ARE REQUIRED AT THE ABOVE WORK SITES WHEN:
 - FOUR OR MORE WORK VEHICLES ENTER THE TRAFFIC LANES IN A ONE HOUR PERIOD.
 - THE WORK ACTIVITY REQUIRES FREQUENT ENCR OACHMENT INTO THE LANE OPEN TO TRAFFIC.
 THE FLAGGER SHALL BE STATIONED APPROXIMATELY 100' (30 m) TO 200' (60 m) IN ADVANCE OF THE WORKERS.

- 12' MIN. WIDTH TANGENT SECTION
16' MIN. WIDTH CURVE SECTION.

- TEMPORARY SHOULDER AND NON-SYSTEM INTERCHANGE PARTIAL RAMP CLOSURES ARE ALLOWED WEEKDAYS BETWEEN 9:00 A.M. AND 3:00 P.M. AND BETWEEN 7:00 P.M. AND 5:00 A.M. OR AS APPROVED BY THE EXPRESSWAY TRAFFIC OPERATIONS ENGINEER. PERMANENT SHOULDER AND PARTIAL RAMP CLOSURES WILL ONLY BE PERMITTED IF CALLED FOR IN THE PLANS OR AS APPROVED BY THE EXPRESSWAY OPERATIONS ENGINEER.

ALL DIMENSIONS ARE IN INCHES (MILLIMETERS) UNLESS OTHERWISE SHOWN.

MODEL: TC-17 (Sheet)
FILE NAME: c:\p\work\hassan\113164911_171 (1st Ave)sh+DistSigs.dgn

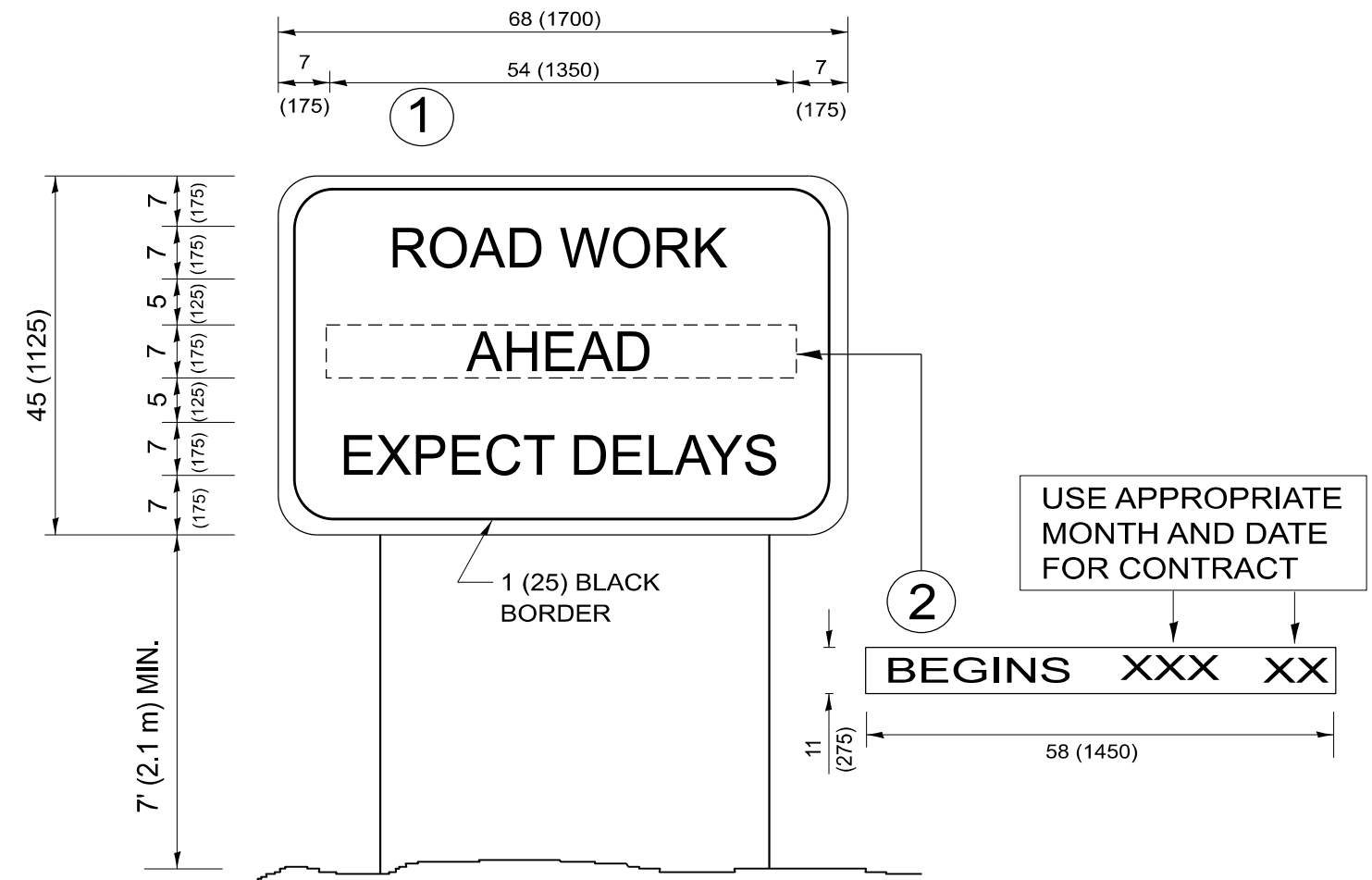
USER NAME = naveed.hassan	DESIGNED -	REVISED - M.D. 06-13
	DRAWN - D.W.S.	REVISED - M.D. 01-18
	CHECKED -	REVISED - M.D. 10-20
PLOT DATE = 1/21/2026	DATE - 11-96	REVISED - D.S. 05-25

**STATE OF ILLINOIS
DEPARTMENT OF TRANSPORTATION**

**TRAFFIC CONTROL DETAILS FOR FREEWAY
SHOULDER CLOSURES AND PARTIAL RAMP CLOSURES**

SCALE: NONE SHEET A004 OF 6 SHEETS STA. TO STA.

F.A.P. RTE.	SECTION	COUNTY	TOTAL SHEETS	SHEET NO.
372	FAP 0372 23 C&J	COOK	16	14
TC-17			CONTRACT NO. 62V29	
ILLINOIS FED. AID PROJECT				



NOTES:

1. USE BLACK LETTERING ON ORANGE BACKGROUND.
2. ERECT SIGNS IN ADVANCE OF THE LOCATION FOR THE "ROAD CONSTRUCTION AHEAD" SIGN AT LOCATIONS AS DIRECTED BY THE ENGINEER.
3. ERECT SIGN ① WITH INSTALLED PANEL ② ONE WEEK PRIOR TO THE START OF CONSTRUCTION.
4. REMOVE PANEL ② SOON AFTER THE START OF CONSTRUCTION.
5. SEE SPECIAL PROVISION FOR "TEMPORARY INFORMATION SIGNING" FOR ADDITIONAL INFORMATION.
6. ONE SIGN ASSEMBLY EQUALS 25.70 SQ. FT. (2.3 SQ. M.)
7. SHALL BE PAID FOR AS TEMPORARY INFORMATION SIGNING.

ALL DIMENSIONS ARE IN INCHES (MILLIMETERS)
UNLESS OTHERWISE SHOWN.

MODEL: TC-22 (Sheet)
FILE NAME: c:\p\work\vw\hassan\1131649\11_171 (1st Ave)sh+Dis+Sts.dgn

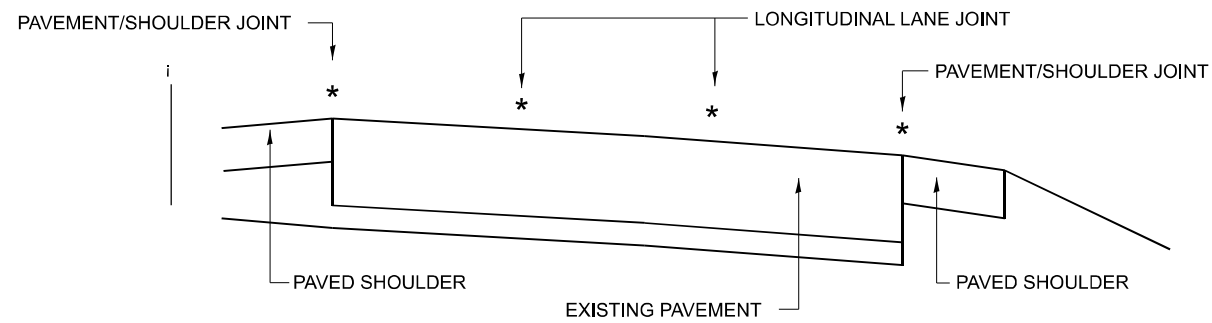
USER NAME = naveed,hassan	DESIGNED -	REVISED - R. MIRS 09-15-97
	DRAWN -	REVISED - R. MIRS 12-11-97
	CHECKED -	REVISED - T. RAMMACHER 02-02-99
PLOT DATE = 1/21/2026	DATE -	REVISED - C. JUCIUS 01-31-07

**STATE OF ILLINOIS
DEPARTMENT OF TRANSPORTATION**

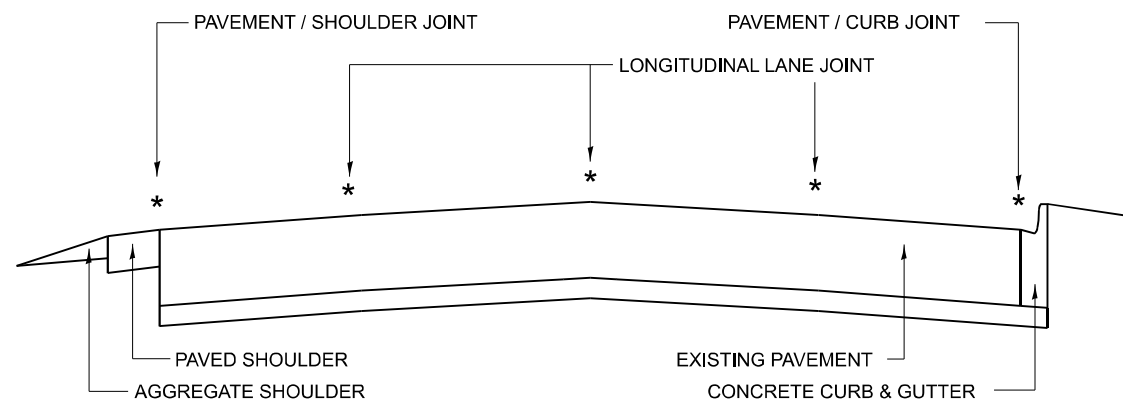
**ARTERIAL ROAD
INFORMATION SIGN**

SCALE: NONE SHEET A005 OF 6 SHEETS STA. TO STA.

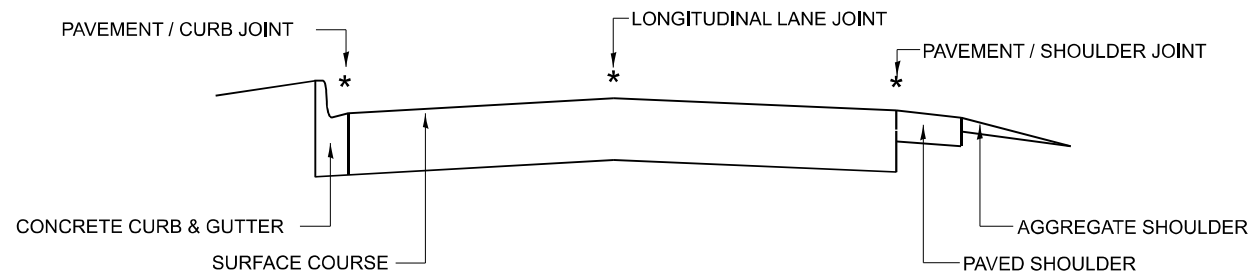
F.A.P. RTE.	SECTION	COUNTY	TOTAL SHEETS	SHEET NO.
372	FAP 0372 23 C&J	COOK	16	15
TC-22			CONTRACT NO. 62V29	
ILLINOIS FED. AID PROJECT				



MULTI-LANE DIVIDED PAVEMENT



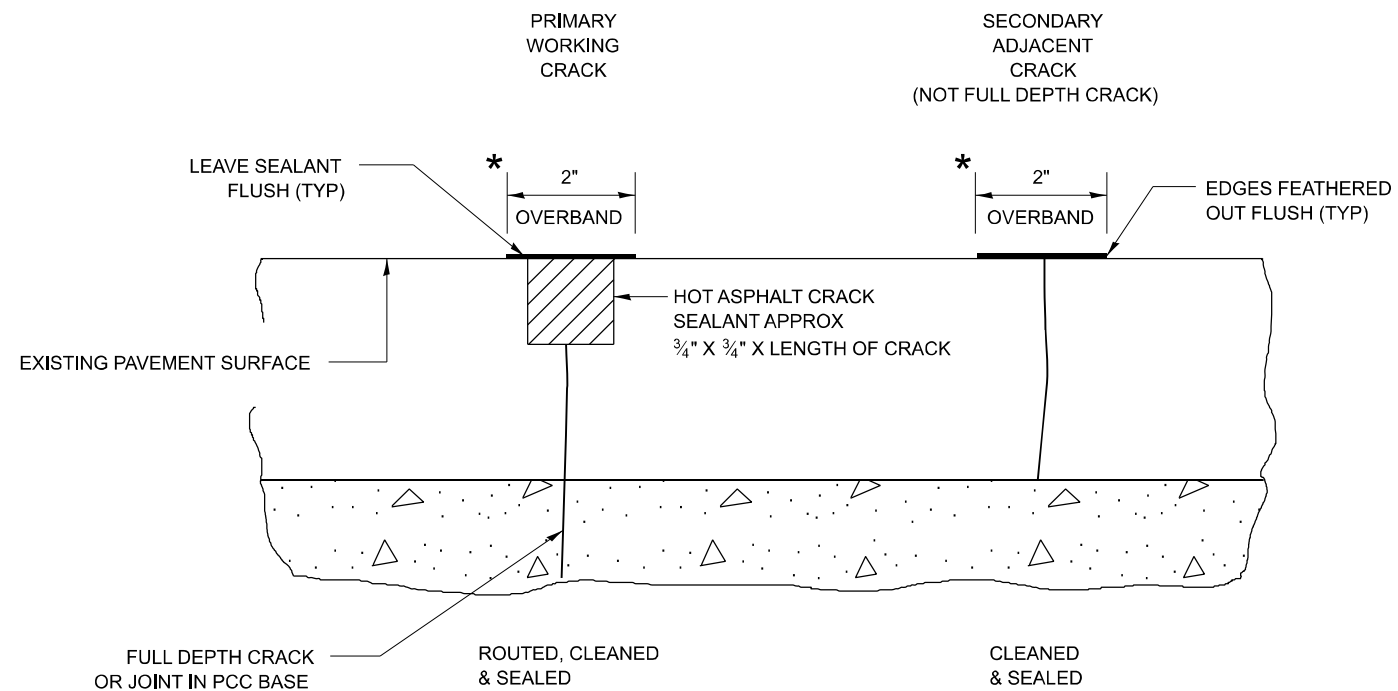
MULTI-LANE UNDIVIDED PAVEMENT



TWO-LANE PAVEMENT

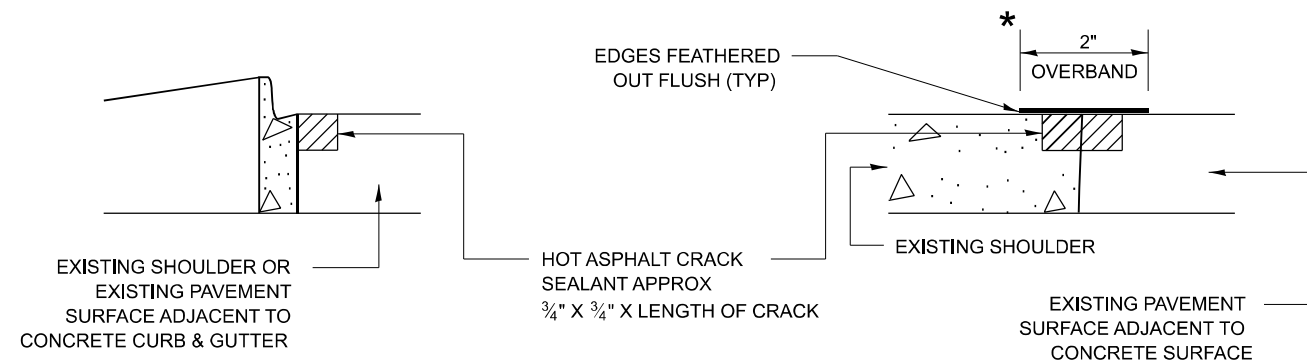
* PROPOSED LONGITUDINAL CRACK ROUTING (PAVEMENT) & CRACK FILLING LOCATIONS

**GENERAL EXISTING TYPICAL SECTIONS
(APPLIES TO HMA AND PCC PAVEMENTS)**



* IN ALL LOCATIONS WHERE THE LONGITUDINAL CRACK CONFLICTS WITH EXISTING PAVEMENT MARKINGS (EITHER EDGE LINE OR LANE LINE) THE CRACK SHALL BE ROUTED & THE RESULTING RESERVOIR FILLED WITH SEALANT. ALL DAMAGES TO EXISTING RAISED REFLECTIVE PAVEMENT MARKERS SHALL BE REPLACED AT THE EXPENSE OF THE CONTRACTOR. ALL EXISTING PAVEMENT MARKINGS WITHIN THE PROJECT LIMITS SHALL BE RESTORED WITH MODIFIED URETHANE PAVEMENT MARKINGS.

LONGITUDINAL JOINT



CRACK & JOINT SEALING DETAIL

MODEL: PD-11 (Sheet)
FILE NAME: c:\p\work\vw\hassan\11316491L_171 (1st Ave)sh+DistSigs.dgn

USER NAME = naveed.hassan	DESIGNED - F. Aqueel / A. Midy	REVISED -
	DRAWN -	REVISED -
	CHECKED -	REVISED -
PLOT DATE = 1/21/2026	DATE - 10/08/2020	REVISED -

**STATE OF ILLINOIS
DEPARTMENT OF TRANSPORTATION**

**CRACK & JOINT SEALING DETAIL
(PD-11)**

SCALE: NONE SHEET A006 OF 8 SHEETS STA. TO STA.

F.A.P. RTE.	SECTION	COUNTY	TOTAL SHEETS	SHEET NO.
372	FAP 0372 23 C&J	COOK	16	16
PD-11		CONTRACT NO. 62V29		
ILLINOIS FED. AID PROJECT				