

STATE OF ILLINOIS
DEPARTMENT OF TRANSPORTATION

F.A.I. RTE.	SECTION	COUNTY	TOTAL SHEETS	SHEET NO.
57	2025-2119-RS,DR	COOK	26	1
		ILLINOIS	CONTRACT NO. 80C87	

FOR INDEX OF SHEETS, SEE SHEET NO. 2

PROPOSED HIGHWAY PLANS

**FAI 57: MARSHFIELD AVENUE
VERMONT STREET TO 127TH STREET
SECTION 2025-2119-RS,DR
STANDARD OVERLAY
COOK COUNTY**

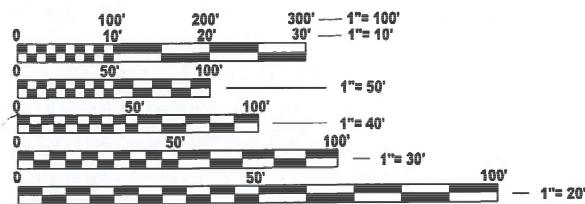
C-91-204-26

TRAFFIC DATA:

**I-57 (MARSHFIELD AVENUE)
NB I-57 OFF-RAMP TO 127TH ST.
ADT (2025) = 6,800 VPD
SPEED LIMIT = 25 MPH**

**I-57 (MARSHFIELD AVENUE)
VERMONT ST. TO 127TH ST.
ADT (2025) < 2,500 VPD
SPEED LIMIT = 25 MPH**

FUNCTIONAL CLASS: LOCAL ROAD

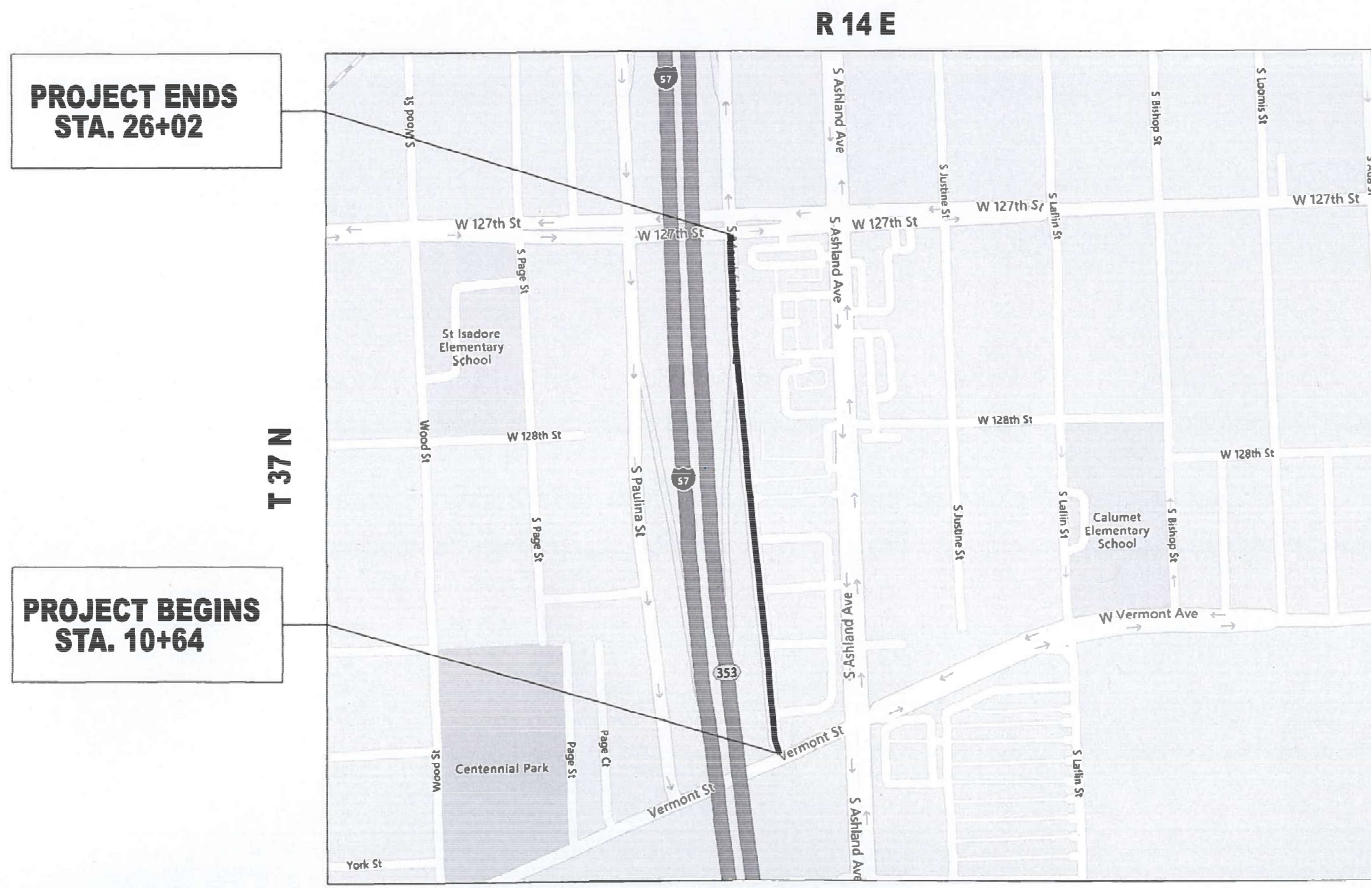


FULL SIZE PLANS HAVE BEEN PREPARED USING STANDARD ENGINEERING SCALES. REDUCED SIZED PLANS WILL NOT CONFORM TO STANDARD SCALES. IN MAKING MEASUREMENTS ON REDUCED PLANS, THE ABOVE SCALES MAY BE USED.

**J.U.L.I.E.
JOINT UTILITY LOCATION INFORMATION FOR EXCAVATION
1-800-892-0123
OR 811**

**PROJECT ENGINEER: VESELIN VELICHKOV (847) 705-4432
PROJECT MANAGER: FAWAD AQUEEL**

CONTRACT NO. 80C87



**PROJECT ENDS
STA. 26+02**

**PROJECT BEGINS
STA. 10+64**

**CALUMET TOWNSHIP
GROSS AND NET LENGTH = 1,538 FT. = 0.29 MILE**



STATE OF ILLINOIS
DEPARTMENT OF TRANSPORTATION

SUBMITTED *May 26* 20 *26*

Joe Rusk REGIONAL ENGINEER

June 26 20 26

Scott A. [Signature]
ENGINEER OF DESIGN AND ENVIRONMENT

June 26 20 26

[Signature]
DIRECTOR OF HIGHWAYS PROJECT IMPLEMENTATION

**PRINTED BY THE AUTHORITY
OF THE STATE OF ILLINOIS**

INDEX OF SHEETS

STATE STANDARDS

GENERAL NOTES

SHEET NO.

DESCRIPTION

STANDARD NO.

DESCRIPTION

- 1) BEFORE STARTING ANY EXCAVATION, THE CONTRACTOR SHALL CALL "JULIE AT (800) 892-0123 OR 811 FOR FIELD LOCATIONS OF BURIED ELECTRIC, TELEPHONE AND GAS FACILITIES, (48 HOURS NOTIFICATION IS REQUIRED).
- 2) THE CONTRACTOR SHALL COORDINATE CONSTRUCTION ACTIVITIES WITH UTILITY COMPANIES, VILLAGE OF CALUMET PARK WITHIN COOK COUNTY.
- 3) FRAMES AND GRATES ADJUSTMENT OF PRIVATE UTILITIES WITHIN THE PROJECT LIMITS SHALL BE DONE BY THEIR RESPECTIVE OWNERS AND ARE NOT PART OF THIS CONTRACT.
- 4) THE CONTRACTOR SHALL BE REQUIRED TO PROVIDE ACCESS TO ABUTTING PROPERTY AT ALL TIMES DURING THE CONSTRUCTION OF THIS PROJECT.
- 5) THE CONTRACTOR WILL NOT BE ALLOWED TO SET UP A YARD OR FIELD OFFICE ON STATE PROPERTY WITHOUT WRITTEN PERMISSION FROM THE DEPARTMENT.
- 6) BEFORE BEGINNING ANY WORK, THE CONTRACTOR SHALL RETAIN AND RECORD FOR FUTURE REFERENCE, ALL EXISTING PAVEMENT MARKING LINES (AND RAISED REFLECTIVE PAVEMENT MARKERS) IN ORDER THAT THESE LOCATIONS CAN BE RE-ESTABLISHED FOR STRIPING. EXACT LOCATIONS OF ALL PAVEMENT MARKINGS SHALL BE AS DIRECTED BY THE ENGINEER.
- 7) IT SHALL BE THE CONTRACTOR'S RESPONSIBILITY TO VERIFY ALL DIMENSIONS AND CONDITIONS EXISTING IN THE FIELD PRIOR TO ORDERING MATERIALS AND BEGINNING CONSTRUCTION, THIS SHALL INCLUDE LOCATING THE MAST ARM AND FOUNDATIONS AND VERIFYING THE MAST ARM LENGTHS.
- 8) ANY DAMAGE TO EXISTING PAVEMENT MARKINGS OR RAISED REFLECTIVE PAVEMENT MARKERS OUTSIDE THE REMOVAL LINE SHOWN ON THE PLANS SHALL BE REPLACED AT THE CONTRACTOR'S EXPENSE.
- 9) THE CONTRACTOR SHALL CONTACT KALPANA KANNAN-HOSADURGA, THE DISTRICT ONE TRAFFIC CONTROL SUPERVISOR AT KALPANA.KANNAN-HOSADURGA@ILLINOIS.GOV A MINIMUM OF 72 HOURS IN ADVANCE OF BEGINNING WORK.
- 10) THE CONTRACTOR SHALL CONTACT THE DISTRICT ONE EXPRESSWAYS TRAFFIC CONTROL SUPERVISOR CARLOS MUNOZ AT CARLOS.MUNOZ@ILLINOIS.GOV A MINIMUM OF 72 HOURS IN ADVANCE OF BEGINNING WORK.
- 11) ANY AGGREGATE SUBGRADE CONTAMINATED AND/OR DAMAGED BY THE CONTRACTOR'S VEHICLES AND/OR EQUIPMENT IS TO BE REMOVED AND REPLACED AS DIRECTED BY THE ENGINEER AT THE CONTRACTOR'S EXPENSE.
- 12) EXISTING BROKEN FRAMES AND LIDS SHALL BE REMOVED AND DISPOSED OF BY THE CONTRACTOR AND SHALL BE REPLACED AS DIRECTED BY THE ENGINEER. REPLACEMENT FRAMES AND LIDS WILL BE PAID FOR ACCORDING TO ARTICLE 109.04 OF THE STANDARD SPECIFICATIONS UNLESS A SEPARATE PAY ITEM HAS BEEN PROVIDED.
- 13) THE RESIDENT ENGINEER SHALL CONTACT PATRICE HARRIS AREA TRAFFIC FIELD TECHNICIAN, AT PATRICE.HARRIS@ILLINOIS.GOV, A MINIMUM OF TWO (2) WEEKS PRIOR TO THE PLACEMENT OF PERMANENT PAVEMENT MARKINGS.
- 14) ALL PAVEMENT MARKINGS SHALL BE PLACED THROUGHOUT THE IMPROVEMENT ACCORDING TO DISTRICT 1 TYPICAL PAVEMENT MARKING.
- 15) TEMPORARY PAVEMENT MARKINGS OR SHORT TERM PAVEMENT MARKINGS ON INTERMEDIATE SURFACES SHALL NOT BE REMOVED, UNLESS DIRECTED BY THE ENGINEER.
- 16) PAVEMENT MARKING TAPE TYPE IV SHALL BE USED FOR SHORT TERM PAVEMENT MARKINGS ON ALL FINAL SURFACES.
- 17) PAVEMENT PATCHING LOCATIONS WILL BE DETERMINED IN THE FIELD BY THE RESIDENT ENGINEER.
- 18) THE "ROAD CONSTRUCTION AHEAD" SIGNS SHALL REMAIN INSTALLED UNTIL COMPLETION OF THE PROJECT OR WHEN NO ROADWAY HAZARDS REMAIN WITHIN THE WORK ZONE.
- 19) DURING CONSTRUCTION OPERATIONS, IF ANY LOOSE MATERIAL IS DEPOSITED IN THE FLOW LINE OF DRAINAGE STRUCTURES SUCH THAT NATURAL FLOW OF WATER IS OBSTRUCTED, THE MATERIAL SHALL BE REMOVED AT THE CLOSE OF EACH WORKING DAY. AT THE CONCLUSION OF CONSTRUCTION OPERATION, ALL UTILITY STRUCTURES SHALL BE FREE FROM DUST AND DEBRIS. THE WORK SPECIFIED ABOVE WILL NOT BE PAID FOR SEPARATELY BUT SHALL BE INCLUDED IN THE COST OF THE CONTRACT.
- 20) DO NOT SCALE PLANS FOR CONSTRUCTION DIMENSIONS.

1	COVER SHEET
2	INDEX OF SHEETS, STATE STANDARDS, AND GENERAL NOTES
3-4	SUMMARY OF QUANTITIES
5-6	EXISTING AND PROPOSED TYPICAL SECTIONS
7	PROPOSED ROADWAY AND PAVEMENT MARKING PLANS
8-10	EXISTING TRAFFIC SIGNAL PLANS / RECORD PLANS (FOR REFERENCE ONLY)
11	BD-08: DETAILS FOR FRAMES AND LIDS ADJUSTMENTS WITH MILLING
12	BD-22: PAVEMENT PATCHING FOR HMA SURFACED PAVEMENT
13	BD-24: CURB OR CURB AND GUTTER REMOVAL AND REPLACEMENT
14	BD-32: BUTT JOINT AND HMA TAPER DETAILS
15	BD-33: HMA TAPER AT EDGE OF P.C.C. PAVEMENT
16	TC-08: ENTRANCE AND EXIT RAMP CLOSURE DETAILS
17	TC-10: TRAFFIC CONTROL AND PROTECTION FOR SIDE ROADS, INTERSECTIONS, AND DRIVEWAYS
18	TC-11: TYPICAL APPLICATIONS RAISED REFLECTIVE PAVEMENT MARKERS (SNOW-PLOW RESISTANT)
19-20	TC-12: MULTI-LANE FREEWAY PAVEMENT MARKING DETAILS
21	TC-13: DISTRICT ONE TYPICAL PAVEMENT MARKINGS
22	TC-14: TRAFFIC CONTROL AND PROTECTION AT TURN BAYS
23	TC-16: SHORT TERM PAVEMENT MARKING LETTERS & SYMBOLS
24	TC-17: TRAFFIC CONTROL DETAILS FOR FREEWAY SHOULDER CLOSURES AND PARTIAL RAMP CLOSURES
25	TC-22: ARTERIAL ROAD INFORMATION SIGNING
26	TC-26: DRIVEWAY ENTRANCE SIGNING

000001-09	STANDARD SYMBOLS, ABBREVIATIONS, AND PATTERNS
442201-04	CLASS C AND D PATCHES
604001-05	FRAME AND LIDS TYPE 1
604061-03	FRAME AND GRATE, TYPE 12
606001-09	CONCRETE CURB TYPE B AND COMBINATION CONCRETE CURB AND GUTTER
701011-04	OFF-RD MOVING OPERATIONS, 2L, 2W, DAY ONLY
701400-12	APPROACH TO LANE CLOSURE, FREEWAY / EXPRESSWAY
701411-09	LANE CLOSURE, MULTILANE, AT ENTRANCE OR EXIT RAMP, FOR SPEEDS ≥ 45 MPH
701427-05	LANE CLOSURE, MULTILANE, INTERMITTENT OR MOVING OPER., FOR SPEEDS ≤ 40 MPH
701601-09	URBAN LANE CLOSURE MULTILANE, 1W OR 2W WITH NONTRAVERSABLE MEDIAN
701602-10	URBAN LANE CLOSURE MULTILANE, 2W WITH BIDIRECTIONAL LEFT TURN LANE
701701-10	URBAN LANE CLOSURE, MULTILANE INTERSECTION
701801-06	SIDEWALK, CORNER OR CROSSWALK CLOSURE
701901-11	TRAFFIC CONTROL DEVICES
780001-05	TYPICAL PAVEMENT MARKINGS
781001-04	TYPICAL APPLICATIONS FOR RAISED REFLECTIVE PAVEMENT MARKERS

MODEL: GenNotesSh01 [Sheet]
FILE NAME: c:\p\work\civil\calumet\mid179255\ID117326-sh-cgennotes.dgn

	USER NAME = Nedat.Qarut	DESIGNED -	REVISED -	STATE OF ILLINOIS DEPARTMENT OF TRANSPORTATION	MARSHFIELD AVE: VERMONT STREET TO 127TH STREET INDEX OF SHEETS, STATE STANDARDS & GENERAL NOTES	F.A.I. RTE.	SECTION	COUNTY	TOTAL SHEETS	SHEET NO.	
		DRAWN -	REVISED -			57	2025-2119-RS,DR	COOK	26	2	
	PLOT SCALE = 0.16666833' / in.	CHECKED -	REVISED -			CONTRACT NO. 80C87					
	PLOT DATE = 5/6/2026	DATE -	REVISED -			SCALE:		SHEET OF 1 SHEETS		STA. TO STA.	
ILLINOIS FED. AID PROJECT											

SUMMARY OF QUANTITIES					TYPE CODE					
					URBAN	URBAN	URBAN	URBAN	URBAN	URBAN
					STANDARD OVERLAY					
CODE NO.	ITEM	UNIT	TOTAL QUANTITY	100% STATE 0005						
21101615	TOPSOIL FURNISH AND PLACE, 4"	SQ YD	425	425						
25200110	SODDING, SALT TOLERANT	SQ YD	425	425						
40600290	BITUMINOUS MATERIALS (TACK COAT)	POUND	3140	3140						
40600370	LONGITUDINAL JOINT SEALANT	FOOT	1975	1975						
40600400	MIXTURE FOR CRACKS, JOINTS, AND FLANGEWAYS	TON	7	7						
40600982	HOT-MIX ASPHALT SURFACE REMOVAL - BUTT JOINT	SQ YD	40	40						
40603200	POLYMERIZED HOT-MIX ASPHALT BINDER COURSE, IL-4.75, N50	TON	260	260						
40605026	POLYMERIZED HOT-MIX ASPHALT SURFACE COURSE, STONE MATRIX ASPHALT, 9.5, MIX "F", N80	TON	460	460						
42001300	PROTECTIVE COAT	SQ YD	75	75						
44000100	PAVEMENT REMOVAL	SQ YD	390	390						
44201761	CLASS D PATCHES, TYPE I, 10 INCH	SQ YD	10	10						
44201765	CLASS D PATCHES, TYPE II, 10 INCH	SQ YD	40	40						
44201769	CLASS D PATCHES, TYPE III, 10 INCH	SQ YD	40	40						
44201771	CLASS D PATCHES, TYPE IV, 10 INCH	SQ YD	80	80						
60266300	VALVE VAULTS TO BE RECONSTRUCTED WITH NEW TYPE 1 FRAME, CLOSED LID	EACH	1	1						
60300105	FRAMES AND GRATES TO BE ADJUSTED	EACH	15	15						
60404400	FRAMES AND GRATES, TYPE 4	EACH	3	3						
60404800	FRAMES AND GRATES, TYPE 11	EACH	10	10						
60406100	FRAMES AND LIDS, TYPE 1, CLOSED LID	EACH	5	5						
67100100	MOBILIZATION	L SUM	1	1						
70102630	TRAFFIC CONTROL AND PROTECTION, STANDARD 701601	L SUM	1	1						
70102632	TRAFFIC CONTROL AND PROTECTION, STANDARD 701602	L SUM	1	1						
70102635	TRAFFIC CONTROL AND PROTECTION, STANDARD 701701	L SUM	1	1						

SUMMARY OF QUANTITIES					TYPE CODE					
					URBAN	URBAN	URBAN	URBAN	URBAN	URBAN
					STANDARD OVERLAY					
CODE NO.	ITEM	UNIT	TOTAL QUANTITY	100% STATE 0005						
70102640	TRAFFIC CONTROL AND PROTECTION, STANDARD 701601	L SUM	1	1						
70300100	SHORT TERM PAVEMENT MARKING	FOOT	6320	6320						
70300150	SHORT TERM PAVEMENT MARKING REMOVAL	SQ FT	1265	1265						
70300211	TEMPORARY PAVEMENT MARKING LETTERS AND SYMBOLS - PAINT	SQ FT	210	210						
70300221	TEMPORARY PAVEMENT MARKING - LINE 4" - PAINT	FOOT	1740	1740						
70300241	TEMPORARY PAVEMENT MARKING - LINE 6" - PAINT	FOOT	1230	1230						
70300251	TEMPORARY PAVEMENT MARKING - LINE 8" - PAINT	FOOT	150	150						
70300261	TEMPORARY PAVEMENT MARKING - LINE 12" - PAINT	FOOT	40	40						
70307120	TEMPORARY PAVEMENT MARKING - LINE 4" - TYPE IV TAPE	FOOT	1580	1580						
* 72000200	SIGN PANEL - TYPE 2	SQ FT	20	20						
* 72800100	TELESCOPING STEEL SIGN SUPPORT	FOOT	30	30						
* 78000100	THERMOPLASTIC PAVEMENT MARKING - LETTERS AND SYMBOLS	SQ FT	105	105						
* 78000200	THERMOPLASTIC PAVEMENT MARKING - LINE 4"	FOOT	870	870						
* 78000400	THERMOPLASTIC PAVEMENT MARKING - LINE 6"	FOOT	615	615						
* 78000500	THERMOPLASTIC PAVEMENT MARKING - LINE 8"	FOOT	75	75						
* 78000600	THERMOPLASTIC PAVEMENT MARKING - LINE 12"	FOOT	20	20						
X4400100	PORTLAND CEMENT CONCRETE SURFACE REMOVAL (VARIABLE DEPTH)	SQ YD	2055	2055						
X4400501	COMBINATION CURB AND GUTTER REMOVAL AND REPLACEMENT LESS THAN OR EQUAL TO 10 FEET	FOOT	200	200						
X4400503	COMBINATION CURB AND GUTTER REMOVAL AND REPLACEMENT GREATER THAN 10 FEET	FOOT	50	50						
X5537800	STORM SEWERS TO BE CLEANED 12"	FOOT	300	300						
X6030310	FRAMES AND LIDS TO BE ADJUSTED (SPECIAL)	EACH	5	5						
X6700407	ENGINEER'S FIELD OFFICE, TYPEA (D1)	CAL MO	6	6						

* = SPECIALITY ITEM

MODEL: SOQ_1 [Sheet]
FILE NAME: c:\pwworkspace\qarut\172550117226-sh-SOQ.dgn

USER NAME	= Nedal.Qarut	DESIGNED	-	REVISED	-
		DRAWN	-	REVISED	-
		CHECKED	-	REVISED	-
PLOT DATE	5/6/2026	DATE	-	REVISED	-

STATE OF ILLINOIS
DEPARTMENT OF TRANSPORTATION

MARSHFIELD AVE: VERMONT STREET TO 127TH STREET
SUMMARY OF QUANTITIES

SCALE: SHEET 1 OF 2 SHEETS STA. TO STA.

F.A.I. RTE.	SECTION	COUNTY	TOTAL SHEETS	SHEET NO.
57	2025-2119-RS,DR	COOK	26	3
CONTRACT NO. 80C87				
ILLINOIS FED. AID PROJECT				

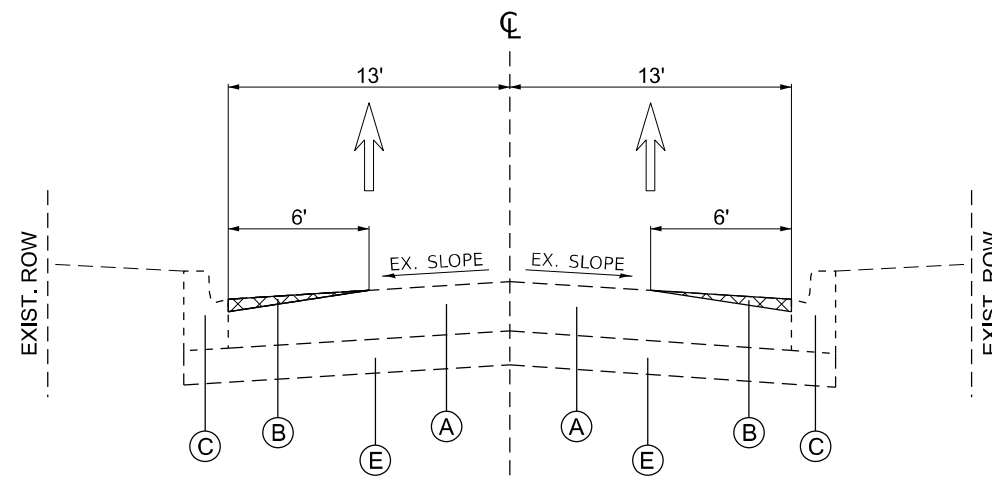
LEGEND - EXISTING

- (A) PORTLAND CEMENT CONCRETE PAVEMENT 10"
- (B) PORTLAND CEMENT CONCRETE SURFACE REMOVAL (VAR. DEPTH) (SEE BD-33)
- (C) COMBINATION CONCRETE CURB AND GUTTER
- (D) PAVEMENT REMOVAL
- (E) SUB-BASE
- (F) TOPSOIL

LEGEND - PROPOSED

- ① POLYMERIZED HOT-MIX ASPHALT SURFACE COURSE, STONE MATRIX ASPHALT, 9.5, MIX "F", N80, 1 3/4"
- ② POLYMERIZED HOT-MIX ASPHALT BINDER COURSE, IL-4.75, N50, 1"
- ③ COMBINATION CONCRETE CURB AND GUTTER
- ④ TOPSOIL FURNISH AND PLACE, 4"
- ⑤ SODDING, SALT TOLERANT

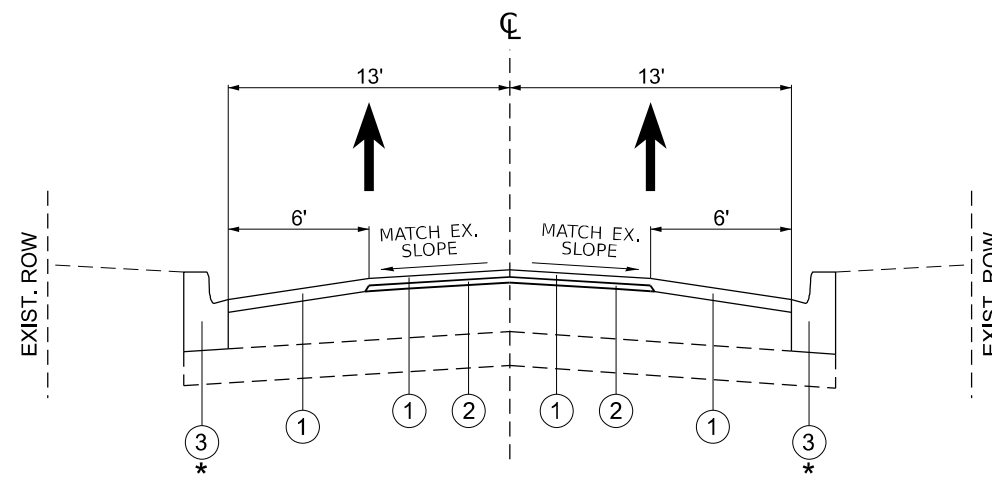
FAI 57: (MARSHFIELD AVE)



EXISTING TYPICAL SECTION

STA. 10+64 TO STA. 21+67

FAI 57: (MARSHFIELD AVE)



PROPOSED TYPICAL SECTION

STA. 10+64 TO STA. 21+67

* = LOCATIONS TO BE DETERMINED BY THE ENGINEER IN THE FIELD

NOTE:

NOTE 1: LONGITUDINAL JOINT SEALANT SHALL BE PLACED OVER THE POLY. HMA BINDER COURSE IL-4.75, N50.

HOT-MIX ASPHALT MIXTURE REQUIREMENTS		QUALITY MANAGEMENT PROGRAM (QMP)
MIXTURE TYPE	AIR VOIDS @ N des	
PAVEMENT RESURFACING – STANDARD OVERLAY		
POLYMERIZED HMA SURFACE COURSE, STONE MATRIX ASPHALT, 9.5, MIX "F", N80, 1 3/4"	3.5% AT 80 GYR.	QC/QA
POLYMERIZED HMA BINDER COURSE, IL-4.75, N50, 1"	3.5% AT 50 GYR.	QC/QA
PATCHING		
CLASS D PATCHES (HMA BINDER IL-19 mm)	4.0% AT 70 GYR.	QC/QA
QMP DESIGNATION: QUALITY CONTROL/QUALITY ASSURANCE (QC/QA); QUALITY CONTROL FOR PERFORMANCE (QCP); PAY FOR PERFORMANCE (PFP)		

NOTE 1: THE UNIT WEIGHT USED TO CALCULATE ALL HMA SURFACE MIXTURES QUANTITIES IS 112 LBS/SQ YD/IN.

NOTE 2: THE "AC TYPE" FOR POLYMERIZED HMA MIXES SHALL BE "SBS/SBR PG 76-22" AND FOR NON-POLYMERIZED HMA THE "AC TYPE" SHALL BE "PG 64-22" UNLESS MODIFIED BY RECLAIMED MATERIALS SPECIFICATIONS.

MODEL: Typical Section Sheet 1 (Sheet)
FILE NAME: c:\p\work\pav\qarum\179255\0117326-sh-typical.dgn

USER NAME = Nedat.Qarut	DESIGNED -	REVISED -
	DRAWN -	REVISED -
	CHECKED -	REVISED -
PLOT DATE = 5/7/2026	DATE -	REVISED -

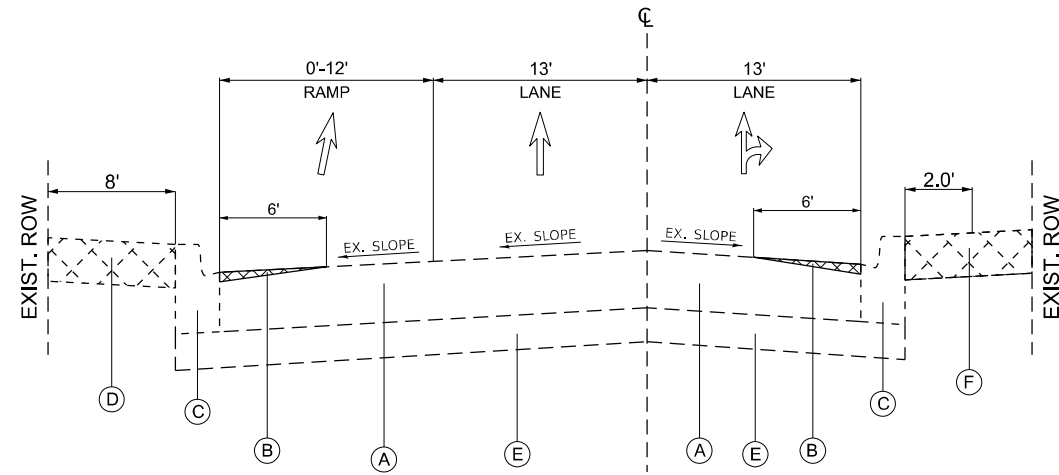
**STATE OF ILLINOIS
DEPARTMENT OF TRANSPORTATION**

**MARSHFIELD AVE: VERMONT STREET TO 127TH STREET
TYPICAL SECTIONS**

SCALE: SHEET 1 OF 2 SHEETS STA. TO STA.

F.A.I. RTE.	SECTION	COUNTY	TOTAL SHEETS	SHEET NO.
57	2025-2119-RS,DR	COOK	26	5
CONTRACT NO. 80C87				
ILLINOIS FED. AID PROJECT				

FAI 57: (MARSHFIELD AVE)



EXISTING TYPICAL SECTION

STA. 21+67 TO STA. 26+02

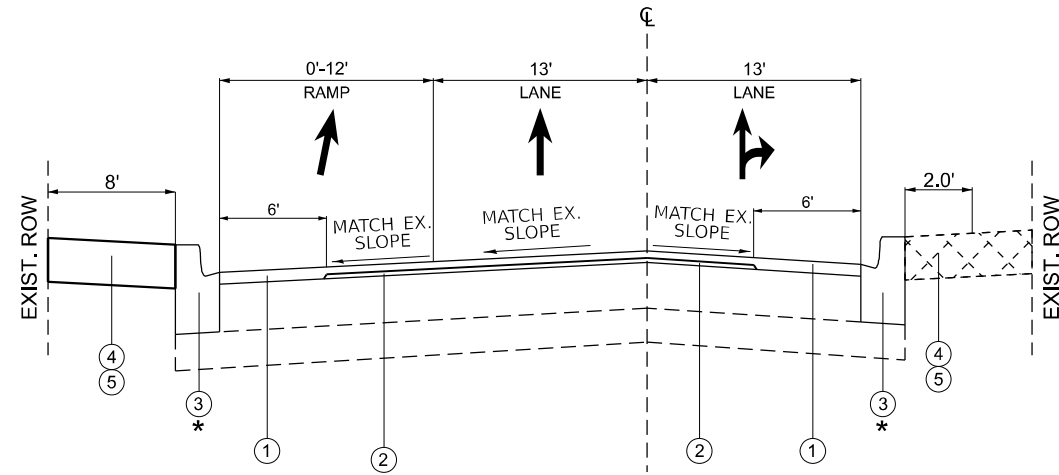
LEGEND - EXISTING

- (A) PORTLAND CEMENT CONCRETE PAVEMENT 10"
- (B) PORTLAND CEMENT CONCRETE SURFACE REMOVAL (VAR. DEPTH) (SEE BD-33)
- (C) COMBINATION CONCRETE CURB AND GUTTER
- (D) PAVEMENT REMOVAL
- (E) SUB-BASE
- (F) TOPSOIL

LEGEND - PROPOSED

- (1) POLYMERIZED HOT-MIX ASPHALT SURFACE COURSE, STONE MATRIX ASPHALT, 9.5, MIX "F", N80, 1 3/4"
- (2) POLYMERIZED HOT-MIX ASPHALT BINDER COURSE, IL-4.75, N50, 1"
- (3) COMBINATION CONCRETE CURB AND GUTTER
- (4) TOPSOIL FURNISH AND PLACE, 4"
- (5) SODDING, SALT TOLERANT

FAI 57: (MARSHFIELD AVE)



PROPOSED TYPICAL SECTION

STA. 21+67 TO STA. 26+02

* = LOCATIONS TO BE DETERMINED BY THE ENGINEER IN THE FIELD

MODEL: Typical Section Sheet 2 [Sheet]
FILE NAME: c:\p\work\pav\fa57\typical.dgn

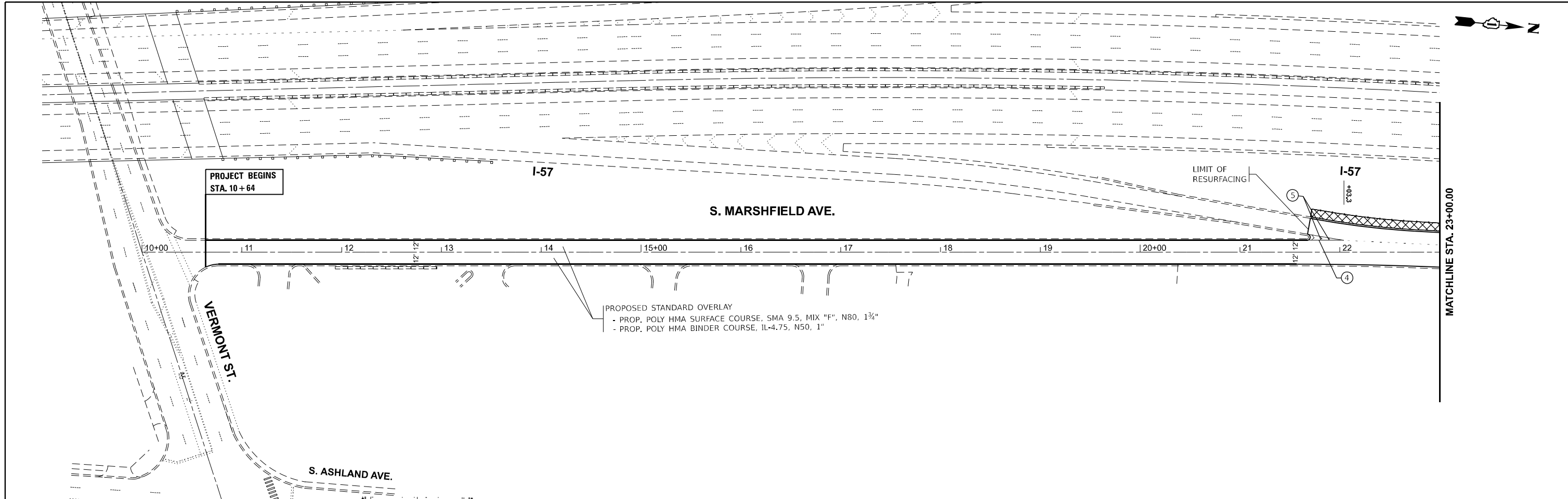
USER NAME = Nedat.Qarut	DESIGNED -	REVISED -
	DRAWN -	REVISED -
	CHECKED -	REVISED -
PLOT DATE = 5/14/2026	DATE -	REVISED -

**STATE OF ILLINOIS
DEPARTMENT OF TRANSPORTATION**

**MARSHFIELD AVE: VERMONT STREET TO 127TH STREET
TYPICAL SECTIONS**

SCALE: SHEET 2 OF 2 SHEETS STA. TO STA.

F.A.I. RTE.	SECTION	COUNTY	TOTAL SHEETS	SHEET NO.
57	2025-2119-RS,DR	COOK	26	6
CONTRACT NO. 80C87				
ILLINOIS FED. AID PROJECT				



PROJECT BEGINS
STA. 10 + 64

S. MARSHFIELD AVE.

LIMIT OF
RESURFACING

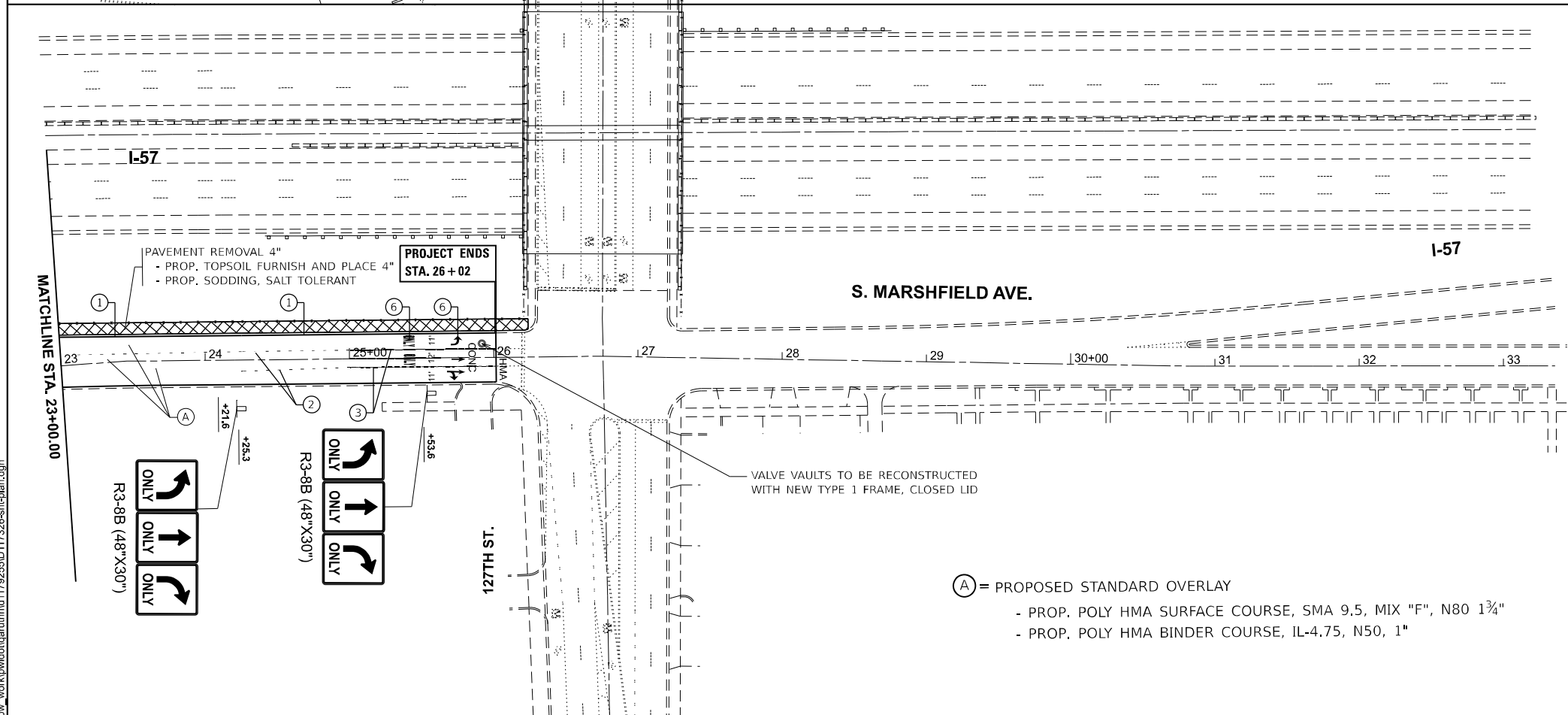
I-57

MATCHLINE STA. 23+00.00

PROPOSED STANDARD OVERLAY
 - PROP. POLY HMA SURFACE COURSE, SMA 9.5, MIX "F", N80, 1¾"
 - PROP. POLY HMA BINDER COURSE, IL-4.75, N50, 1"

VERMONT ST.

S. ASHLAND AVE.



PAVEMENT MARKING LEGEND

- ① PROP. THERMOPLASTIC PAVEMENT MARKING LINE, 4" SOLID, YELLOW EDGE LINE, (TYP.)
- ② PROP. THERMOPLASTIC PAVEMENT MARKING LINE, 6" SKIP DASH, WHITE TURN LANE @ 6' SKIP & 2' DASH (TYP.)
- ③ PROP. THERMOPLASTIC PAVEMENT MARKING LINE, 6" SOLID, WHITE TURN LANE LINE (TYP.)
- ④ PROP. THERMOPLASTIC PAVEMENT MARKING LINE, 8" SOLID, WHITE GORE LINE, (TYP.)
- ⑤ PROP. THERMOPLASTIC PAVEMENT MARKING LINE, 12" DIAGONAL 45°, WHITE LINE, CHEVRONS (TYP.)
- ⑥ PROP. THERMOPLASTIC PAVEMENT MARKING LINE, WHITE, LETTERS & SYMBOLS (TYP.)

PAVEMENT REMOVAL 4"
 - PROP. TOPSOIL FURNISH AND PLACE 4"
 - PROP. SODDING, SALT TOLERANT

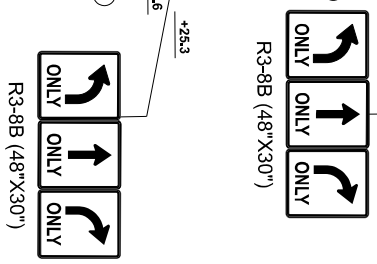
PROJECT ENDS
STA. 26 + 02

S. MARSHFIELD AVE.

I-57

MATCHLINE STA. 23+00.00

VALVE VAULTS TO BE RECONSTRUCTED
WITH NEW TYPE 1 FRAME, CLOSED LID



Ⓐ = PROPOSED STANDARD OVERLAY
 - PROP. POLY HMA SURFACE COURSE, SMA 9.5, MIX "F", N80 1¾"
 - PROP. POLY HMA BINDER COURSE, IL-4.75, N50, 1"

MODEL: MarshfieldAve_E - Rdwy Plan 1 (Sheet)
FILE NAME: c:\p\work\1725501\1725501.dgn

USER NAME = Nedat.Qarut	DESIGNED -	REVISED -
	DRAWN -	REVISED -
	CHECKED -	REVISED -
PLOT DATE = 6/3/2026	DATE -	REVISED -

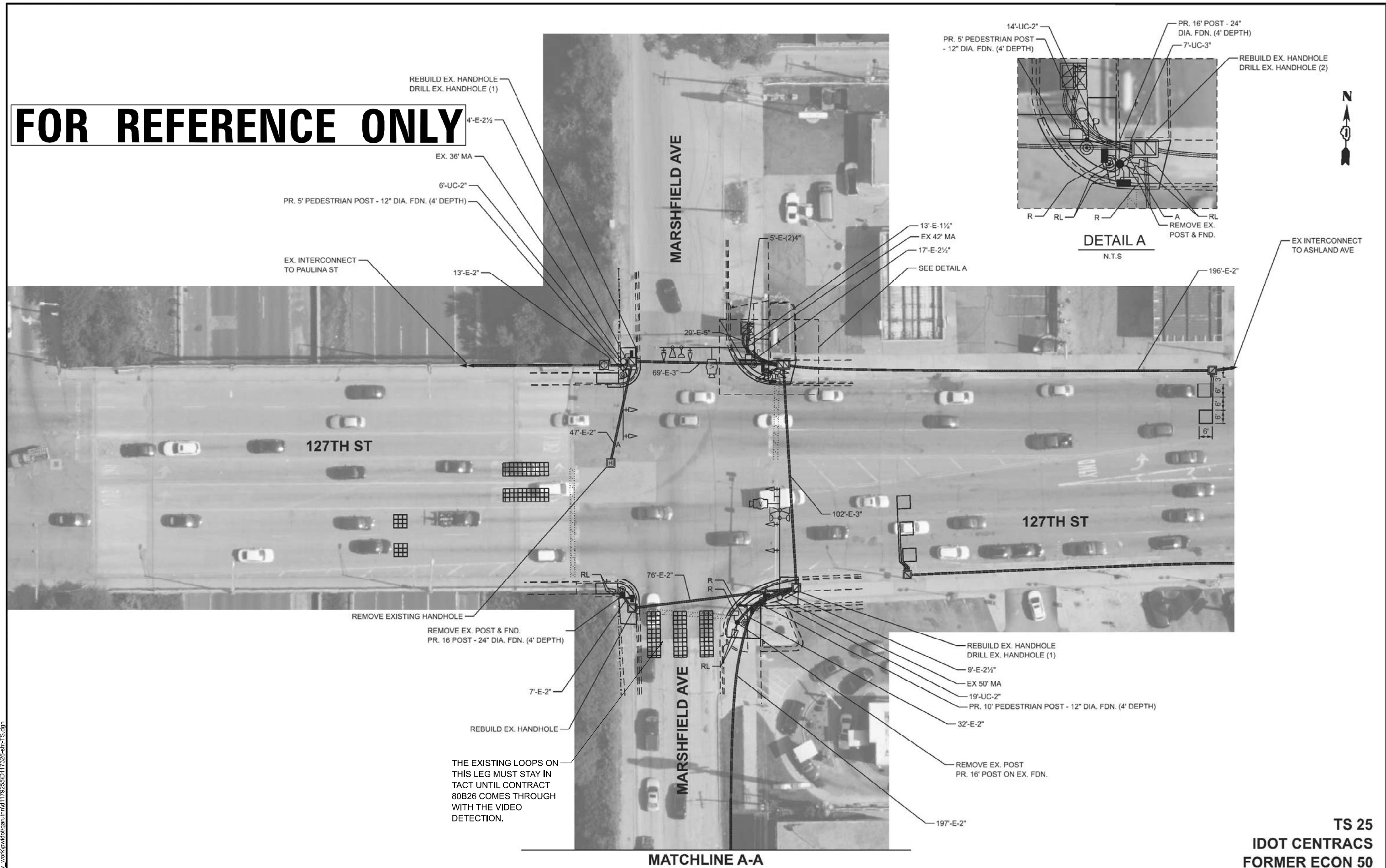
**STATE OF ILLINOIS
DEPARTMENT OF TRANSPORTATION**

**MARSHFIELD AVE: VERMONT STREET TO 127TH STREET
ROADWAY AND PAVEMENT MARKING PLAN**

SCALE: 1"=50' SHEET 1 OF 1 SHEETS STA. TO STA.

F.A.I. RTE.	SECTION	COUNTY	TOTAL SHEETS	SHEET NO.
57	2025-2119-RS,DR	COOK	26	7
CONTRACT NO. 80C87				
ILLINOIS FED. AID PROJECT				

FOR REFERENCE ONLY



REBUILD EX. HANDHOLE
DRILL EX. HANDHOLE (1)

EX. INTERCONNECT
TO PAULINA ST

127TH ST

MARSHFIELD AVE

DETAIL A
N.T.S.



REMOVE EXISTING HANDHOLE
REMOVE EX. POST & FND.
PR. 16 POST - 24" DIA. FDN. (4' DEPTH)

127TH ST

MARSHFIELD AVE

REBUILD EX. HANDHOLE
DRILL EX. HANDHOLE (1)
9'-E-2 1/2"
EX 50' MA
19'-UC-2"
PR. 10' PEDESTRIAN POST - 12" DIA. FDN. (4' DEPTH)

THE EXISTING LOOPS ON
THIS LEG MUST STAY IN
TACT UNTIL CONTRACT
80B26 COMES THROUGH
WITH THE VIDEO
DETECTION.

REMOVE EX. POST
PR. 16' POST ON EX. FDN.

MATCHLINE A-A

TS 25
IDOT CENTRACS
FORMER ECON 50

MODEL: Detector Loop (Sheet)
FILE NAME: c:\p\work\17925501\17925501-17925501-TS.dgn

USER NAME = Nedat.Qarut	DESIGNED -	REVISED -
	DRAWN -	REVISED -
	CHECKED -	REVISED -
PLOT DATE = 2/14/2026	DATE -	REVISED -

STATE OF ILLINOIS
DEPARTMENT OF TRANSPORTATION

TRAFFIC SIGNAL MODERNIZATION
127TH STREET AND MARSHFIELD AVENUE

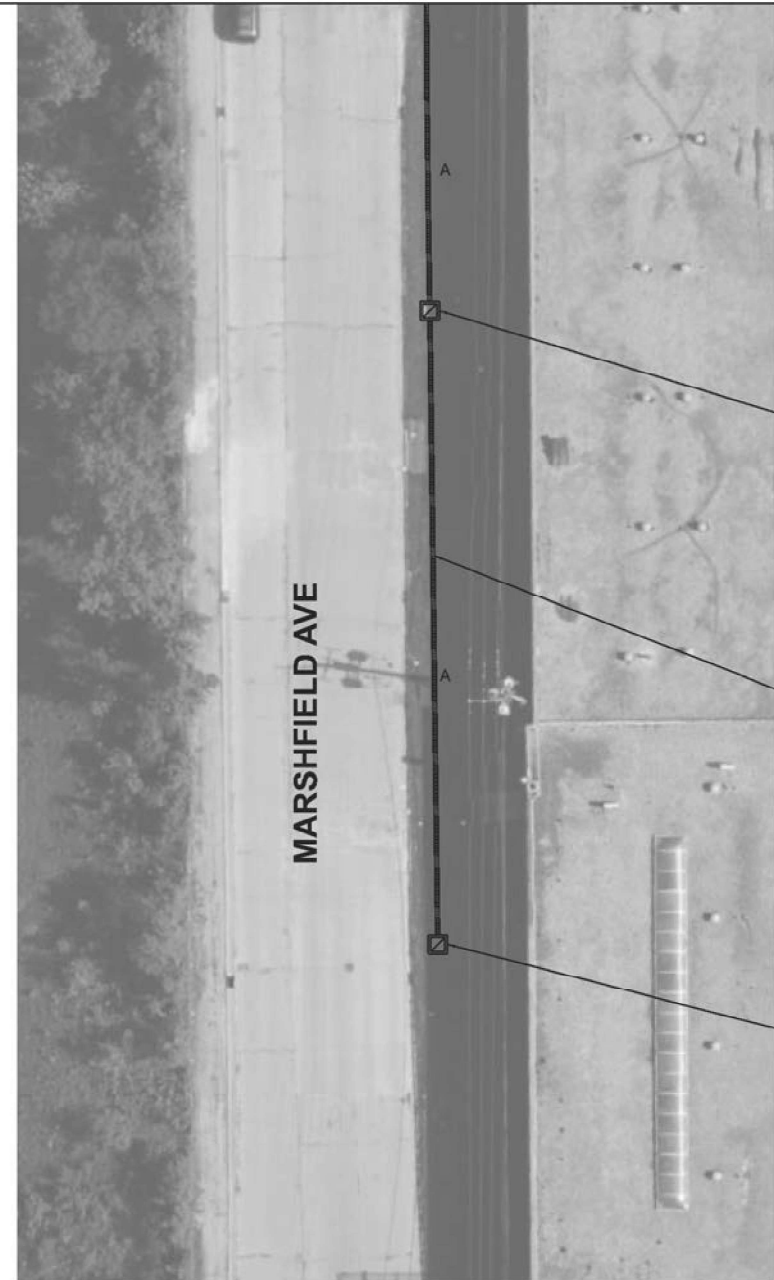
SCALE: SHEET 1 OF 3 SHEETS STA. TO STA.

F.A.I. RTE.	SECTION	COUNTY	TOTAL SHEETS	SHEET NO.
57	2025-2119-RS,DR	COOK	26	8
CONTRACT NO. 80C87				
ILLINOIS FED. AID PROJECT				

FOR REFERENCE ONLY



MATCHLINE A-A



REMOVE EXISTING HANDHOLE

132'-E-2"

REMOVE EXISTING HANDHOLE

TS 25
IDOT CENTRACS
FORMER ECON 50

MODEL: Deflector_Loop_2 (Sheet)
FILE NAME: c:\p\work\avict\carummid1792550\179255-sh1-TS.dgn

USER NAME = Nedat.Qarut	DESIGNED -	REVISED -
	DRAWN -	REVISED -
	CHECKED -	REVISED -
PLOT DATE = 2/14/2026	DATE -	REVISED -

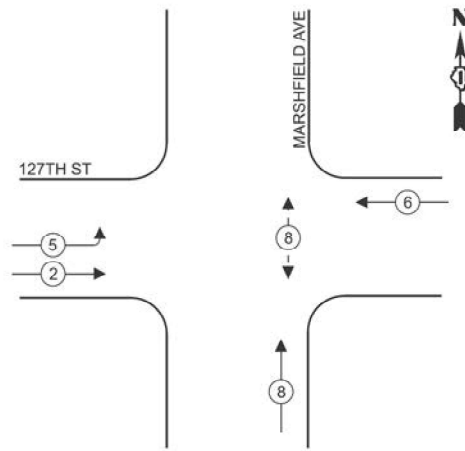
STATE OF ILLINOIS
DEPARTMENT OF TRANSPORTATION

TRAFFIC SIGNAL MODERNIZATION
127TH STREET AND MARSHFIELD AVENUE

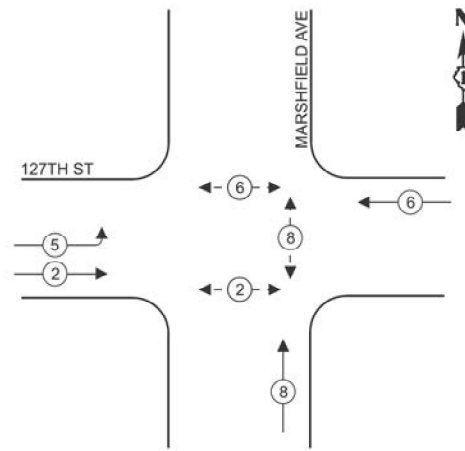
SCALE: SHEET 2 OF 3 SHEETS STA. TO STA.

F.A.I. RTE.	SECTION	COUNTY	TOTAL SHEETS	SHEET NO.
57	2025-2119-RS,DR	COOK	26	9
				CONTRACT NO. 80C87
ILLINOIS FED. AID PROJECT				

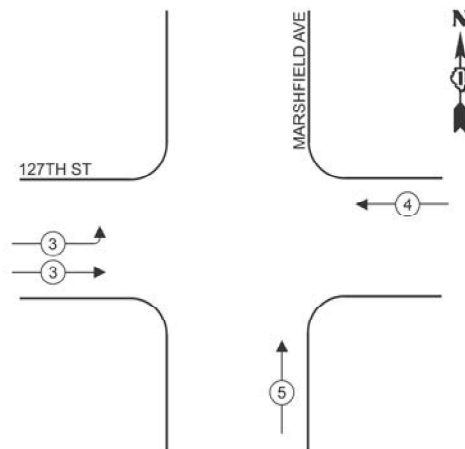
**EXISTING
CONTROLLER SEQUENCE**



**PROPOSED
CONTROLLER SEQUENCE**



**EXISTING AND PROPOSED
EMERGENCY VEHICLE
PREEMPTION SEQUENCE**



LEGEND

- ← * → PROTECTED PHASE
- ← - * - → PROTECTED/PERMITTED PHASE
- ← * → PEDESTRIAN PHASE
- ← * OL → OVERLAP

ENERGY COSTS TO:
ILLINOIS DEPARTMENT OF TRANSPORTATION
 201 W. CENTER CT,
 SCHAUMBURG, IL 60196
 ENERGY SUPPLY:
 CONTACT: PAUL EDWARDS
 PHONE: (773)-573-8637
 COMPANY: COMED CRESTWOOD & UNIVERSITY PARK REGION
 ACCOUNT NUMBER: 32330-17049
 METER NUMBER:

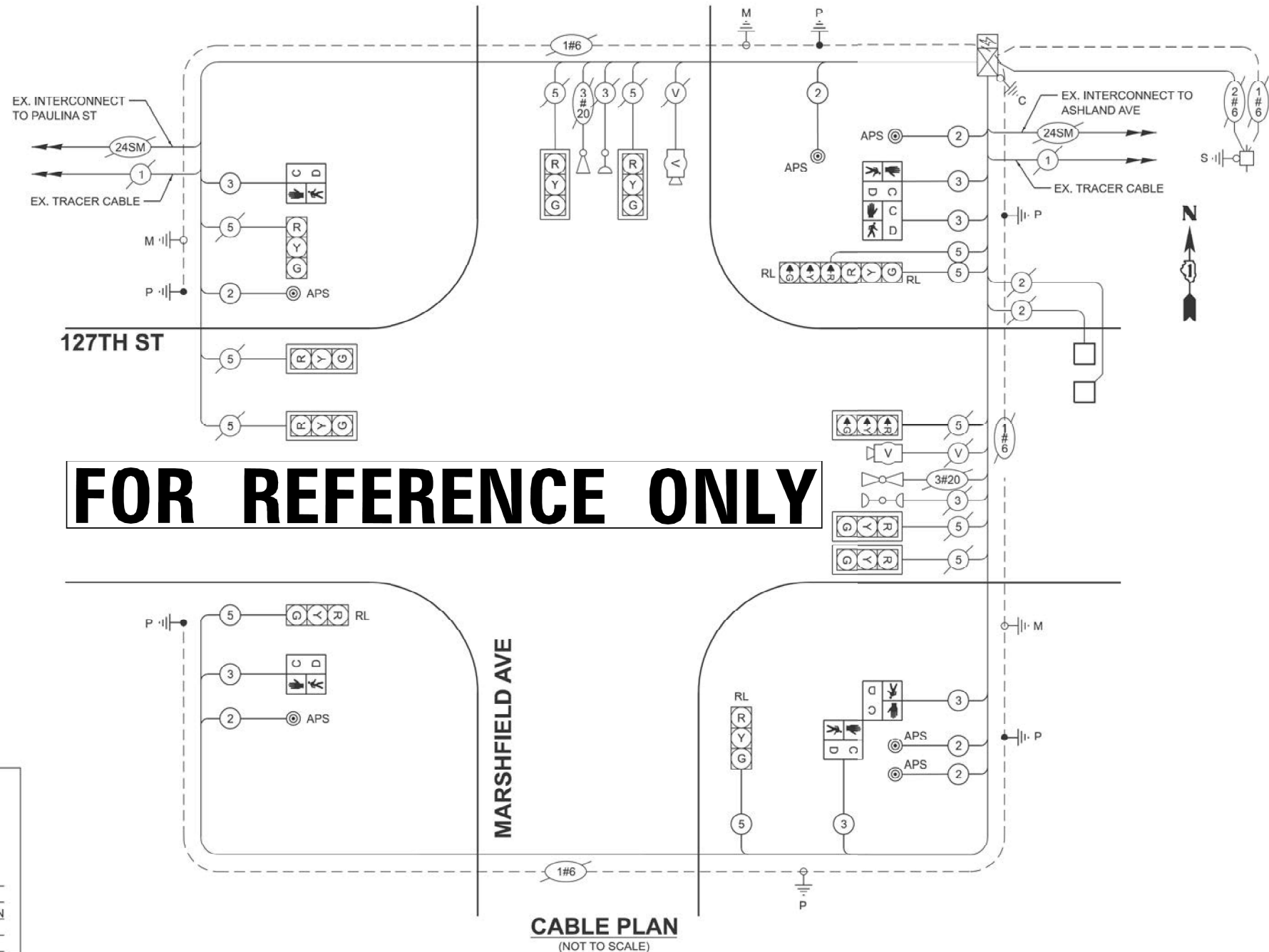
**TRAFFIC SIGNAL ELECTRICAL
SERVICE REQUIREMENTS**

EQUIPMENT TYPE	QUANTITY	UNIT WATTAGE	TOTAL WATTAGE
SIGNAL HEAD 1 OR 3-SECTION	12	11	132
4-SECTION	-	14	-
5-SECTION	-	13	-
PROGRAMMABLE 3-SECTION	-	22	-
4-SECTION	-	32	-
5-SECTION	-	28	-
PEDESTRIAN SIGNAL	6	15	90
CONTROLLER	1	150	150
MASTER CONTROLLER	-	100	-
UPS	1	25	25
DETECTION RADAR OR VIDEO	2	20	40
BLANK-OUT SIGN	-	25	-
NETWORK SWITCH II OR III	1	35	35
CELLULAR MODEM	1	15	15
TOTAL UPS SIZING			487
UPS CHARGING	1	225	225
BATTERY HEATER MAT	1	180	180
CABINET HEATER	1	200	200
FLASHER	-	15	-
LED STREET NAME SIGN	-	120	-
LUMINAIRE	-	240	-
TOTAL SERVICE WIRE SIZING			1092

ITEM DESCRIPTION	UNIT	TOTAL QUANTITY
UNDERGROUND CONDUIT, GALVANIZED STEEL, 2" DIA.	FOOT	39
UNDERGROUND CONDUIT, GALVANIZED STEEL, 3" DIA.	FOOT	7
MAINTENANCE OF EXISTING TRAFFIC SIGNAL INSTALLATION	EACH	1
ELECTRIC CABLE IN CONDUIT, SIGNAL NO. 14 2C	FOOT	1010
ELECTRIC CABLE IN CONDUIT, SIGNAL NO. 14 3C	FOOT	1035
ELECTRIC CABLE IN CONDUIT, SIGNAL NO. 14 5C	FOOT	685
ELECTRIC CABLE IN CONDUIT, EQUIPMENT GROUNDING CONDUCTOR, NO. 6 1C	FOOT	125
TRAFFIC SIGNAL POST, 16 FT.	EACH	3
CONCRETE FOUNDATION, TYPE A	FOOT	8
DRILL EXISTING HANDHOLE	EACH	4
PEDESTRIAN SIGNAL HEAD, LED, 1-FACE, BRACKET MOUNTED WITH COUNTDOWN TIME	EACH	6
DETECTOR LOOP, TYPE I	FOOT	66
RELOCATE EXISTING SIGNAL HEAD	EACH	4

ITEM DESCRIPTION	UNIT	TOTAL QUANTITY
MODIFY EXISTING CONTROLLER CABINET	EACH	1
REMOVE ELECTRIC CABLE FROM CONDUIT	FOOT	1840
REMOVE EXISTING TRAFFIC SIGNAL EQUIPMENT	EACH	1
REBUILD EXISTING HANDHOLE	EACH	4
REMOVE EXISTING HANDHOLE	EACH	3
REMOVE EXISTING CONCRETE FOUNDATION	EACH	2
PEDESTRIAN SIGNAL POST, 10 FT.	EACH	1
PEDESTRIAN SIGNAL POST, 5 FT.	EACH	2
ACCESSIBLE PEDESTRIAN SIGNALS	EACH	6
CONCRETE FOUNDATION, TYPE A 12-INCH DIAMETER	FOOT	12
RE-OPTIMIZE TRAFFIC SIGNAL SYSTEM LEVEL 2	EACH	1
REMOVE AND REPLACE ANCHOR BOLTS	EACH	1

FOR REFERENCE ONLY



SCHEDULE OF QUANTITIES

STATE OF ILLINOIS
DEPARTMENT OF TRANSPORTATION

CABLE PLAN, PHASE DESIGNATION DIAGRAM, EMERGENCY VEHICLE
PREEMPTION SEQUENCE AND SCHEDULE OF QUANTITIES
127TH STREET AND MARSHFIELD AVENUE

F.A.I. RTE.	SECTION	COUNTY	TOTAL SHEETS	SHEET NO.
57	2025-2119-RS,DR	COOK	26	10
CONTRACT NO. 80C87				

TS 25
IDOT CENTRACS
FORMER ECON 50

MODEL: Detector Loop_3 (Sheet)
FILE NAME: c:\p\work\idoc\centracs\mmd1792550\1792550-sh1-TS.dgn

USER NAME = Nedat.Qarut	DESIGNED -	REVISED -
	DRAWN -	REVISED -
	CHECKED -	REVISED -
PLOT DATE = 2/14/2026	DATE -	REVISED -

SCALE: SHEET 3 OF 3 SHEETS STA. TO STA.

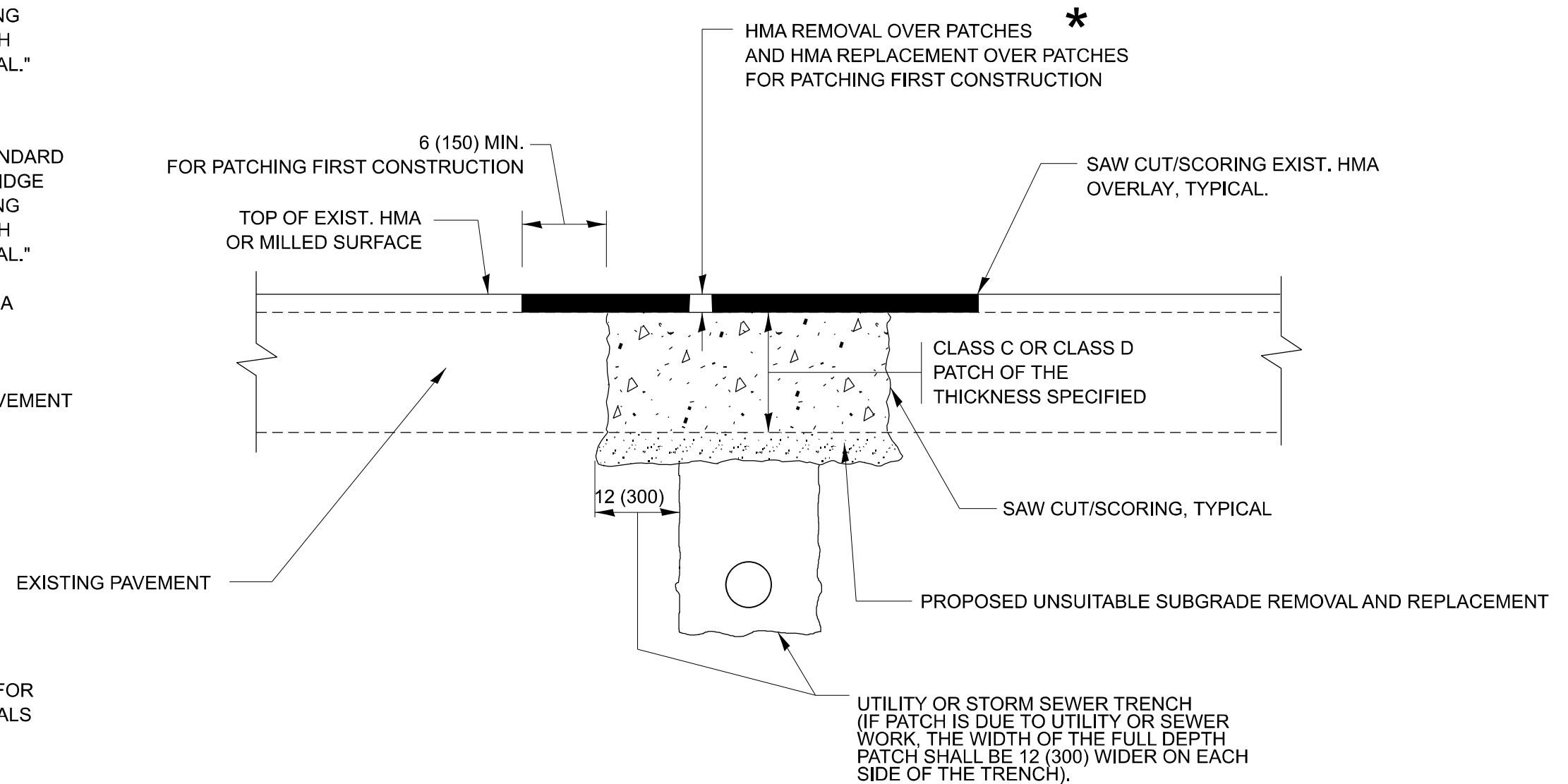
ILLINOIS FED. AID PROJECT

METHOD OF MEASUREMENT

REFER TO SECTION 442 OF THE STANDARD SPECIFICATIONS FOR ROAD AND BRIDGE CONSTRUCTION AND THE RECURRING SPECIAL PROVISION "PATCHING WITH HOT-MIX ASPHALT OVERLAY REMOVAL."

BASIS OF PAYMENT

1. REFER TO SECTION 442 OF THE STANDARD SPECIFICATIONS FOR ROAD AND BRIDGE CONSTRUCTION AND THE RECURRING SPECIAL PROVISION "PATCHING WITH HOT-MIX ASPHALT OVERLAY REMOVAL."
2. SAW CUT/SCORING OF EXISTING HMA OVERLAY IS INCLUDED IN THE COST OF PAVEMENT PATCHING.
3. SAW CUT/SCORING OF EXISTING PAVEMENT IS INCLUDED IN THE COST OF PAVEMENT PATCHING.



SEQUENCE OF CONSTRUCTION (PATCHING FIRST)

1. REMOVE THE EXISTING HMA MATERIAL OVER THE AREA TO BE PATCHED.
2. REMOVE AND REPLACE WITH CLASS C OR D PATCH.
3. REPLACE HMA MATERIAL OVER THE AREA TO BE PATCHED.

SEQUENCE OF CONSTRUCTION (MILLING FIRST)

1. MILL HMA FIRST IF THERE IS AT LEAST 4 ½ INCHES OR MORE OF HMA MATERIAL ON TOP OF THE EXISTING PAVEMENT OR IF THE PAVEMENT IS FULL DEPTH HMA. A MINIMUM OF 2 INCHES OF HMA MATERIAL SHALL BE IN PLACE AFTER MILLING.
2. REMOVE AND REPLACE WITH FULL DEPTH CLASS D PATCHES TO TOP OF MILLED SURFACE.

ALL DIMENSIONS ARE IN INCHES (MILLIMETERS) UNLESS OTHERWISE SHOWN.

MODEL: BD-22 (Sheet)
FILE NAME: c:\p\work\pav\qarut\mtd1792550117326-shr-Dist\Sigs.dgn

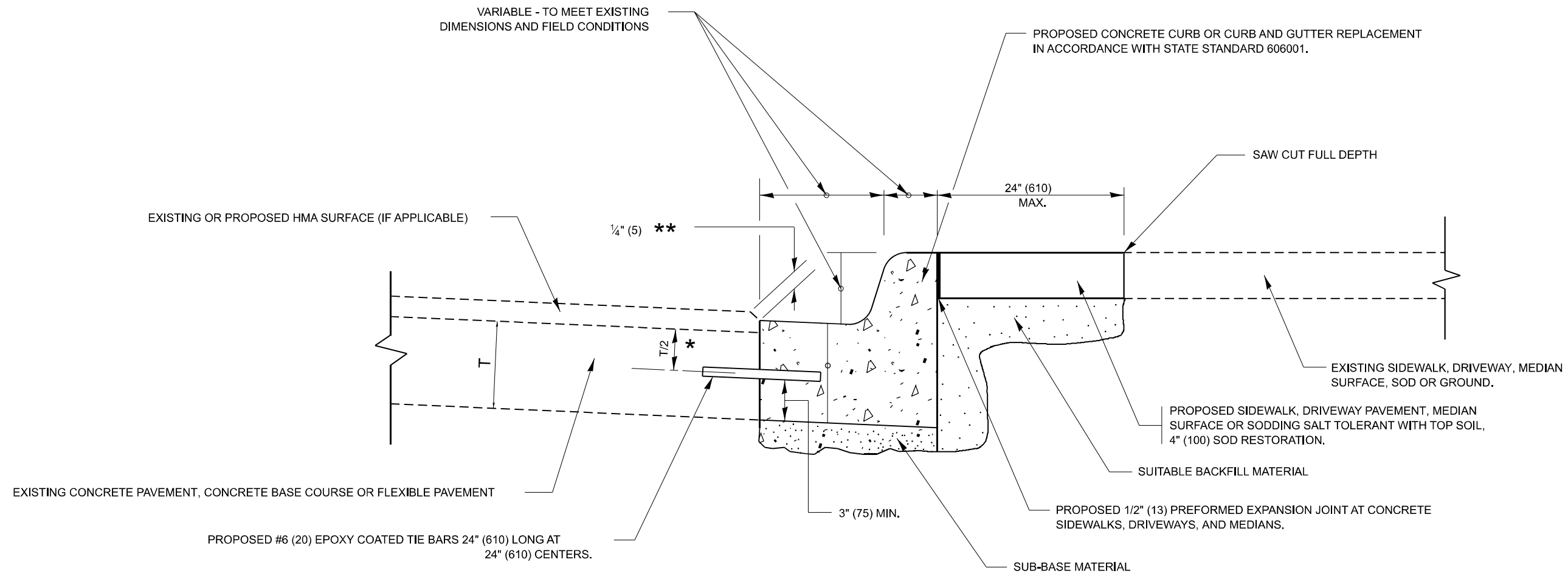
USER NAME = Nedat.Qarut	DESIGNED - R. SHAH	REVISED - R. BORO 01-01-07
	DRAWN -	REVISED - R. BORO 09-04-07
	CHECKED -	REVISED - K. ENG 10-27-08
PLOT DATE = 2/14/2026	DATE - 10-25-94	REVISED - K. SMITH 11-18-22

STATE OF ILLINOIS
DEPARTMENT OF TRANSPORTATION

PAVEMENT PATCHING FOR
HMA SURFACED PAVEMENT

SCALE: NONE SHEET 1 OF 1 SHEETS STA. TO STA.

F.A.I. RTE.	SECTION	COUNTY	TOTAL SHEETS	SHEET NO.
57	2025-2119-RS,DR	COOK	26	12
BD400-04 (BD-22)			CONTRACT NO. 80C87	
ILLINOIS FED. AID PROJECT				



- * 3" (75) MINIMUM FROM TOP AND BOTTOM OF THE CONCRETE PAVEMENT OR BASE COURSE.
- ** IF THE FINAL SURFACE OF THE PAVEMENT IS CONCRETE, THE GUTTER IS TO BE FLUSH WITH THE PAVEMENT.

CURB OR CURB AND GUTTER REMOVAL AND REPLACEMENT

ALL DIMENSIONS ARE IN INCHES (MILLIMETERS) UNLESS OTHERWISE SHOWN.

MODEL: BD-24 (Sheet)
FILE NAME: c:\p\work\wv\h01\carut\m179255\0117326-shr-Dist\Dist\Sigs.dgn

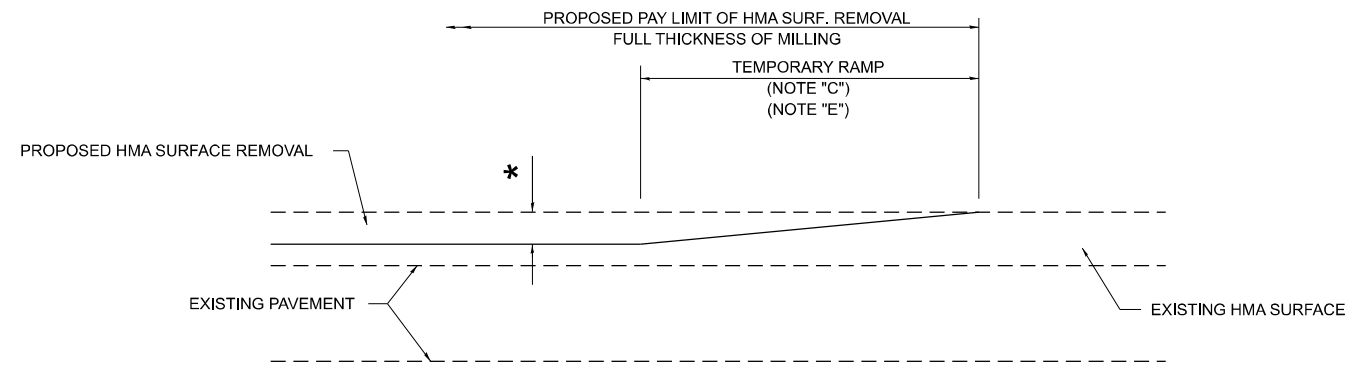
USER NAME = Nedat.Qarut	DESIGNED - A. HOUSEH	REVISED - A. ABBAS 03-21-97
	DRAWN -	REVISED - M. GOMEZ 01-22-01
	CHECKED -	REVISED - R. BORO 12-15-09
PLOT DATE = 2/14/2026	DATE - 03-11-94	REVISED - K. SMITH 07-11-19

**STATE OF ILLINOIS
DEPARTMENT OF TRANSPORTATION**

**CURB OR CURB AND GUTTER
REMOVAL AND REPLACEMENT**

SCALE: NONE SHEET 1 OF 1 SHEETS STA. TO STA.

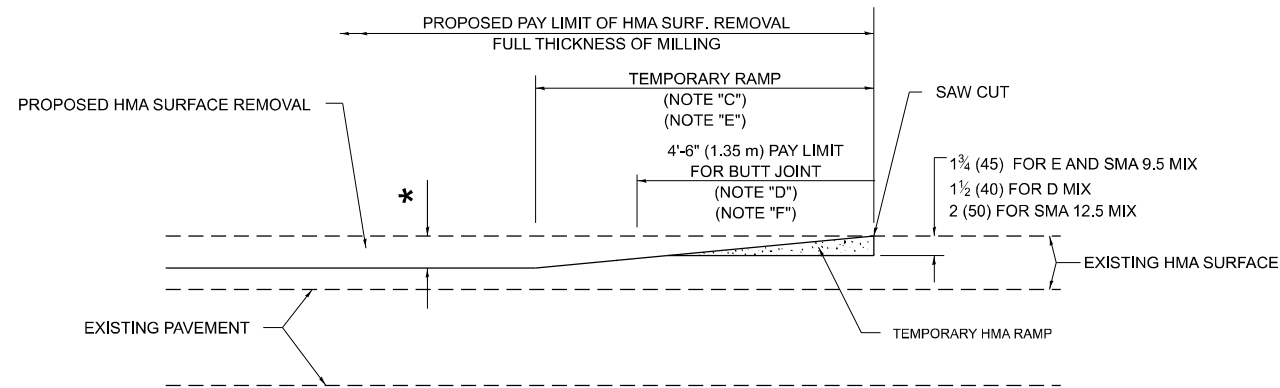
F.A.I. RTE.	SECTION	COUNTY	TOTAL SHEETS	SHEET NO.
57	2025-2119-RS,DR	COOK	26	13
BD600-06 (BD-24)			CONTRACT NO. 80C87	
ILLINOIS FED. AID PROJECT				



MILLED TEMPORARY RAMP

(FOR BUTT JOINT AND HMA TAPER SEE DETAIL BELOW)

OPTION 1

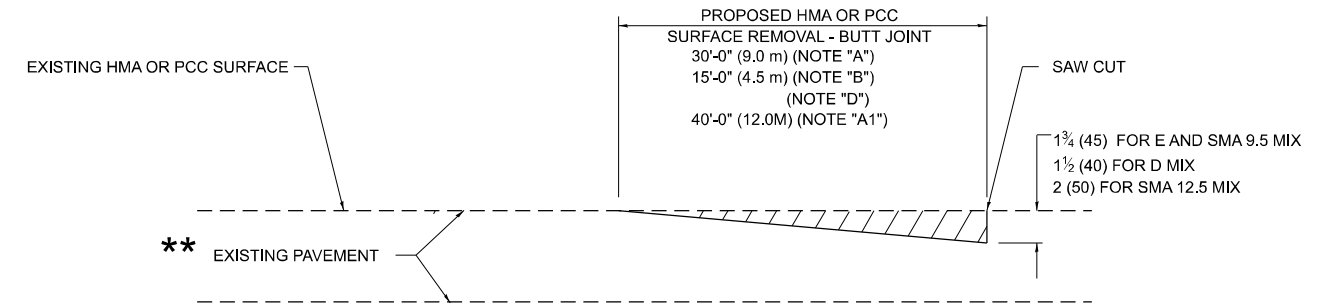


HMA CONSTRUCTED TEMPORARY RAMP

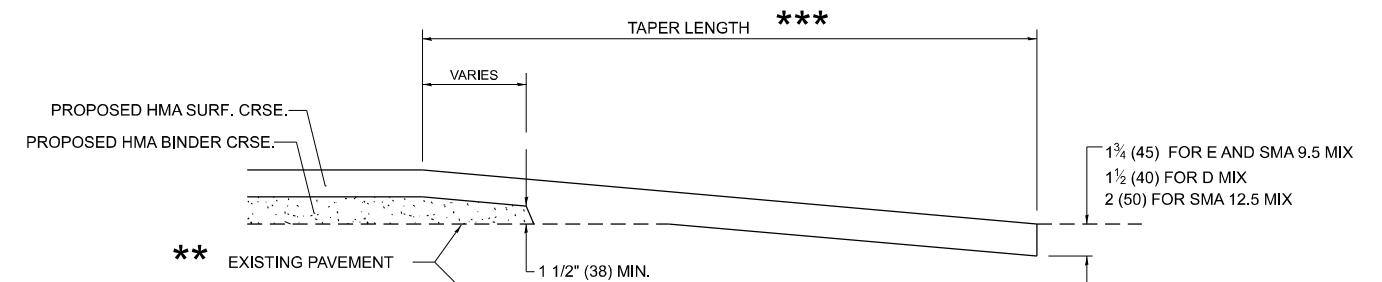
(FOR BUTT JOINT AND HMA TAPER SEE DETAIL BELOW)

OPTION 2

TYPICAL TEMPORARY RAMP



BUTT JOINT DETAIL



HMA TAPER DETAIL

TYPICAL BUTT JOINT AND HMA TAPER FOR RESURFACING ONLY

** PC CONCRETE, HMA OR HMA RESURFACED PAVEMENT.

GENERAL NOTES

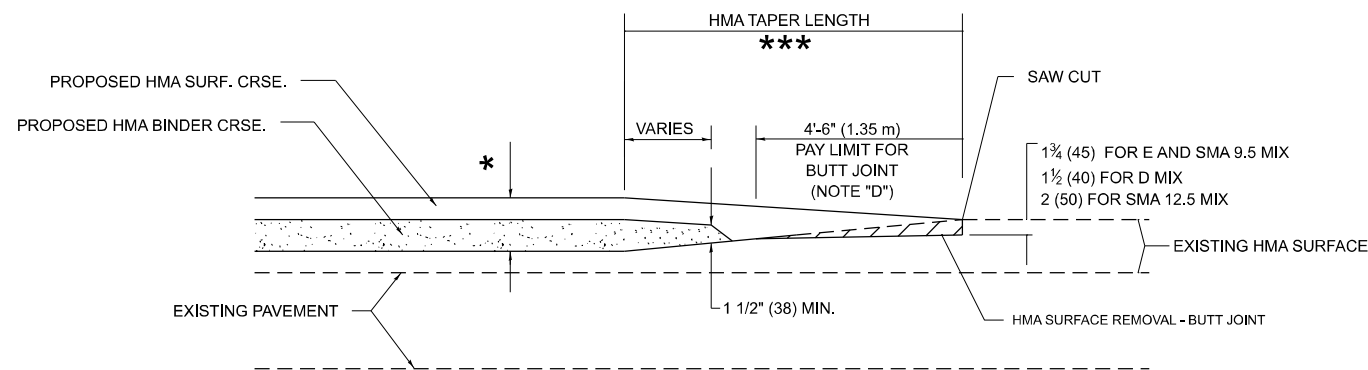
- A. MAINLINE ARTERIAL ROADWAYS AND MAJOR SIDE ROADS.
- A1. INTERSTATES
- B. MINOR SIDE ROADS.
- C. THE TEMP. RAMP SHALL BE CONSTRUCTED IMMEDIATELY UPON REMOVAL OF THE EXISTING HMA SURFACE.
- D. THE BUTT JOINT SHALL BE CONSTRUCTED IMMEDIATELY PRIOR TO PLACING THE PROPOSED HMA COURSES.
- E. TAPER THE TEMP. RAMP AT A RATE OF 3' - 4" (1.02m) PER 1 INCH (25 mm) OF MILLING THICKNESS.
* SEE TYPICAL SECTIONS FOR MILLING THICKNESS.
- F. SEE ARTICLE 406.08 AND 406.14 OF THE STANDARD SPECIFICATIONS FOR "HMA AND/OR PCC SURFACE REMOVAL, BUTT JOINT".

20'-0" (6.1 m) PER 1 (25) RESURFACING (NOTE "A")
10'-0" (3.0 m) PER 1 (25) RESURFACING (NOTE "B")

BASIS OF PAYMENT

- 1. THE BUTT JOINT WILL BE PAID FOR AT THE CONTRACT UNIT PRICE PER SQUARE YARD (SQUARE METER) FOR "HOT-MIX ASPHALT SURFACE REMOVAL - BUTT JOINT" OR FOR "PORTLAND CEMENT CONCRETE SURFACE REMOVAL - BUTT JOINT".
- 2. THE TEMPORARY RAMP AND SAW CUT SHALL BE INCLUDED IN THE UNIT COST FOR HMA OR PCC SURFACE REMOVAL-BUTT JOINT.

ALL DIMENSIONS ARE IN INCHES (MILLIMETERS) UNLESS OTHERWISE SHOWN.



BUTT JOINT AND HMA TAPER

TYPICAL BUTT JOINT AND HMA TAPER FOR MILLING AND RESURFACING

STATE OF ILLINOIS
DEPARTMENT OF TRANSPORTATION

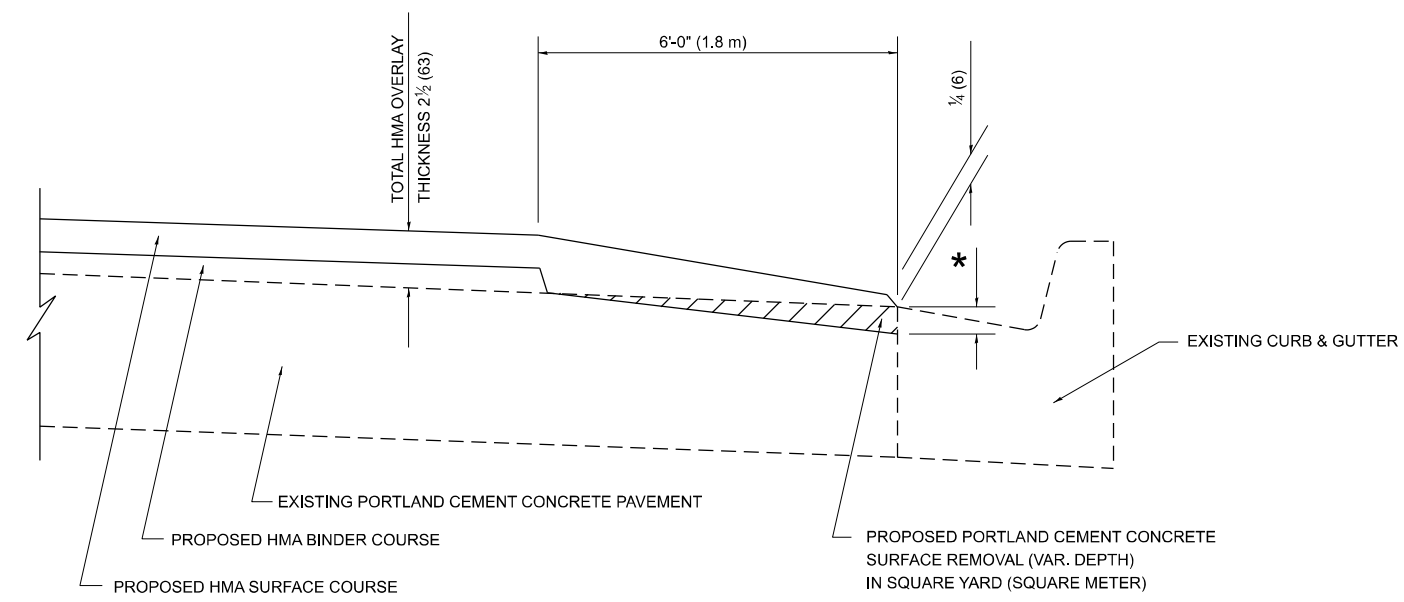
BUTT JOINT AND
HMA TAPER DETAILS

SCALE: NONE SHEET 1 OF 1 SHEETS STA. TO STA.

USER NAME = Nedat.Qarut	DESIGNED - M. DE YONG	REVISED - A. ABBAS 03-21-97
	DRAWN -	REVISED - M. GOMEZ 04-06-01
	CHECKED -	REVISED - R. BORO 01-01-07
PLOT DATE = 2/14/2026	DATE - 06-13-90	REVISED - K. SMITH 11-18-22

F.A.I. RTE.	SECTION	COUNTY	TOTAL SHEETS	SHEET NO.
57	2025-2119-RS,DR	COOK	26	14
BD400-05 BD-32		CONTRACT NO. 80C87		
ILLINOIS FED. AID PROJECT				

MODEL: BD-32 (Sheet)
FILE NAME: c:\paw\work\paw\cag\mmd179255\0117326-shit-Dist\Sigs.dgn



**HMA TAPER AT
EDGE OF P.C.C. PAVEMENT**

HMA SURFACE COURSE	HMA BINDER COURSE	* MILLING AT GUTTER FLAG	
MIX	THICKNESS	THICKNESS	
D	1 1/2 (38)	1 (25)	1 1/4 (33)
E OR SMA 9.5	1 3/4 (44)	3/4 (19)	1 1/2 (38)

ALL DIMENSIONS ARE IN INCHES (MILLIMETERS) UNLESS OTHERWISE SHOWN.

MODEL: BD-33 (Sheet)
FILE NAME: c:\p\work\qarut\qarut\mid17255\0117255-shc-Dist\S&S.dgn

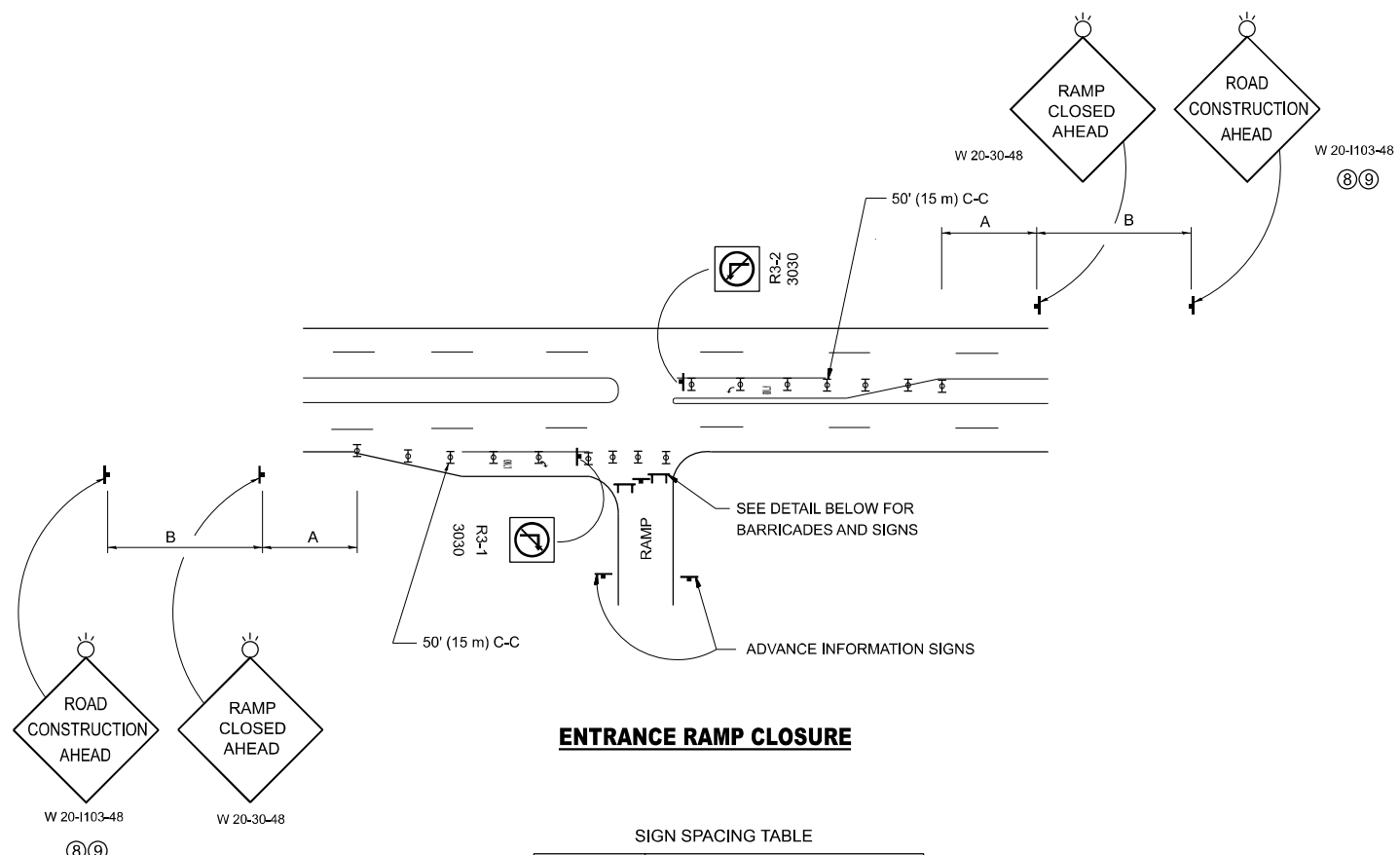
USER NAME = Nedat.Qarut	DESIGNED - R. SHAH	REVISED - R. BORO 01-01-07
	DRAWN - JIS	REVISED - JP CHANG 07-08-16
	CHECKED - A. ABBAS	REVISED - K. SMITH 02-01-22
PLOT DATE = 2/14/2026	DATE - 09-10-94	REVISED - K. SMITH 11-18-22

**STATE OF ILLINOIS
DEPARTMENT OF TRANSPORTATION**

**HMA TAPER AT
EDGE OF P.C.C. PAVEMENT**

SCALE: NONE SHEET 1 OF 1 SHEETS STA. TO STA.

F.A.I. RTE.	SECTION	COUNTY	TOTAL SHEETS	SHEET NO.
57	2025-2119-RS,DR	COOK	26	15
BD400-06 BD-33		CONTRACT NO. 80C87		
ILLINOIS FED. AID PROJECT				

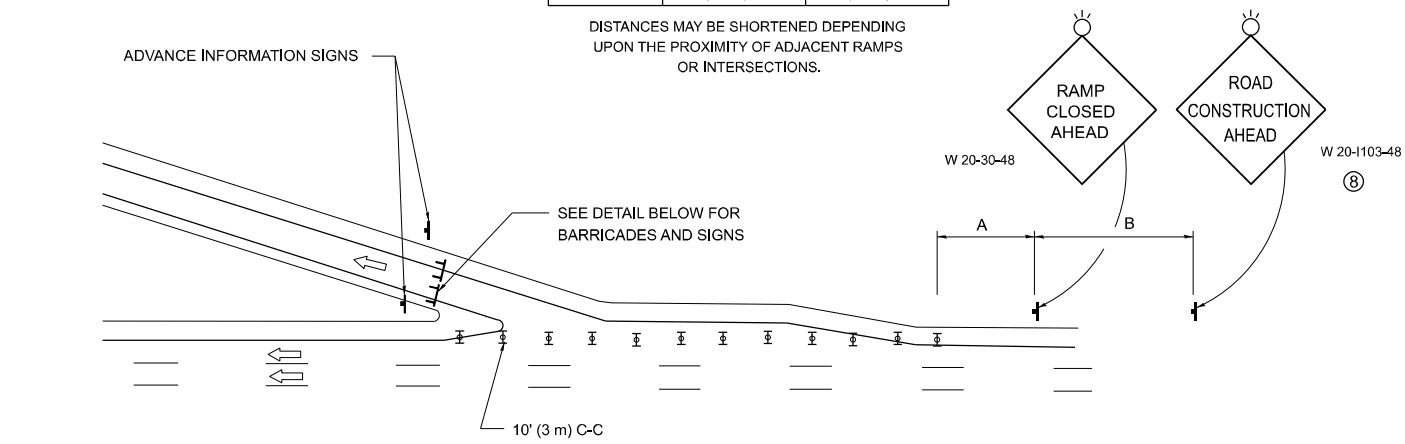


ENTRANCE RAMP CLOSURE

SIGN SPACING TABLE

FACILITY	DISTANCE BETWEEN SIGNS	
	A	B
EXPRESSWAY >24 HOURS	1000' (300 m)	1500' (450 m)
EXPRESSWAY ≤24 HOURS	500' (150 m)	500' (150 m)
ARTERIAL 55 MPH	500' (150 m)	500' (150 m)
ARTERIAL 50-45 MPH	350' (100 m)	350' (100 m)
ARTERIAL <45 MPH	200' (60 m)	200' (60 m)

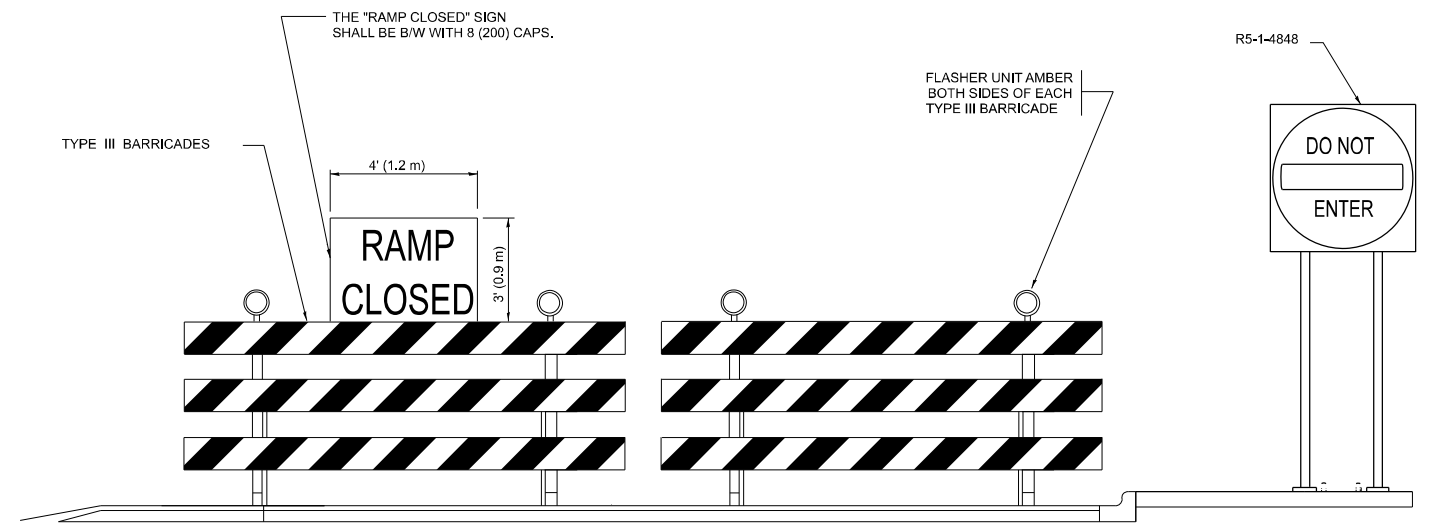
DISTANCES MAY BE SHORTENED DEPENDING UPON THE PROXIMITY OF ADJACENT RAMPS OR INTERSECTIONS.



EXIT RAMP CLOSURE

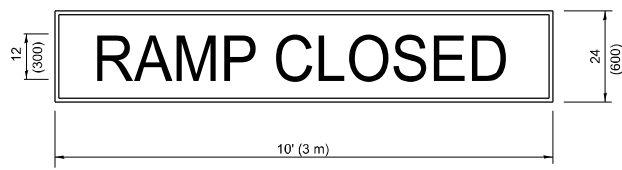
SYMBOLS

- ▬ TYPE II BARRICADE OR DRUM
- ▬ TYPE III BARRICADE WITH 2 FLASHING LIGHTS



DETAIL FOR REQUIRED BARRICADES & SIGNS

RAMP CLOSURE ADVANCE WARNING SIGN

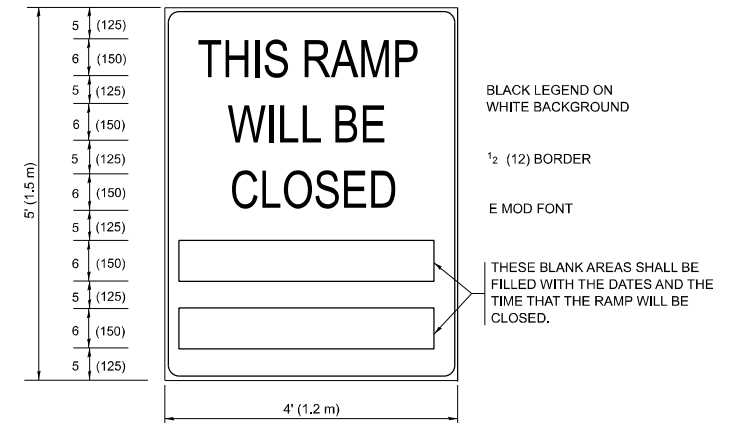


BLACK LEGEND ON ORANGE BACKGROUND MOUNTED DIAGONALLY
E MOD FONT
1 (25) BORDER

THESE SIGNS ARE REQUIRED ON ALL THE EXIT GUIDE SIGNS FOR EXIT RAMPS THAT WILL BE CLOSED FOR MORE THAN FOUR (4) CONSECUTIVE DAYS.

THESE SIGNS ARE REQUIRED ON BOTH SIDES OF THE RAMP, MINIMUM OF 1 WEEK IN ADVANCE OF THE CLOSURE.
THESE SIGNS SHALL BE FABRICATED AND PAID FOR ACCORDING TO THE TEMPORARY INFORMATION SIGNING SPECIAL PROVISION

RAMP CLOSURE ADVANCE INFORMATION SIGN



BLACK LEGEND ON WHITE BACKGROUND
1/2 (12) BORDER
E MOD FONT

THESE BLANK AREAS SHALL BE FILLED WITH THE DATES AND THE TIME THAT THE RAMP WILL BE CLOSED.

GENERAL NOTES:

- 1 CONES MAY BE SUBSTITUTED FOR DRUMS OR TYPE II BARRICADES DURING DAY OPERATIONS. CONES SHALL BE A MINIMUM OF 28 (700) HIGH.
- 2 VERTICAL BARRICADES SHALL NOT BE USED FOR RAMP CLOSURES.
- 3 A FLAGGER SHALL BE POSITIONED AT EACH CLOSED RAMP THAT IS OPEN TO CONSTRUCTION VEHICLES, PRECEDED BY A W20-7 FLAGGER WARNING SIGN.
- 4 ALL ROUTE MARKERS AND TRAILBLAZER ASSEMBLIES WHICH DIRECT MOTORISTS TO A CLOSED ENTRANCE RAMP SHALL BE COVERED WHEN THE RAMP IS CLOSED FOR MORE THAN FOUR (4) DAYS.
- 5 THE SIGNING AND BARRICADING WHICH IS REQUIRED BY THIS DETAIL SHALL BE INCLUDED IN THE COST OF TRAFFIC CONTROL AND PROTECTION (EXPRESSWAYS).
- 6 AUTHORIZATION FROM THE DISTRICT'S BUREAU OF TRAFFIC IS REQUIRED FOR ALL RAMP CLOSURES.
- 7 THE RAMP CLOSURE ADVANCE INFORMATION SIGNS SHALL BE ERECTED IF THE CLOSURE TIME EXCEEDS TWENTY-FOUR (24) HOURS. ADDITIONAL ADVANCE WARNING SIGNS ON EXIT GUIDE SIGNING WILL BE REQUIRED FOR EXIT RAMP CLOSURES THAT EXCEED FOUR (4) DAYS IN LENGTH
- 8 ROAD CONSTRUCTION AHEAD SIGNS MAY BE OMITTED WHEN THIS DETAIL IS USED IN CONJUNCTION WITH OTHER TRAFFIC CONTROL THAT ALREADY INCLUDES A ROAD CONSTRUCTION AHEAD SIGN.
- 9 ARTERIAL ROAD CONSTRUCTION AHEAD SIGNS SHALL BE INSTALLED ON THE LEFT SIDE OF TRAFFIC IF THE MEDIAN IS MORE THAN 10 FT WIDE.

ALL DIMENSIONS ARE IN INCHES (MILLIMETERS) UNLESS OTHERWISE SHOWN.

MODEL: TC-8 (Sheet)
FILE NAME: c:\p\work\project\garumid179255\0117326-shi-DistSigs.dgn

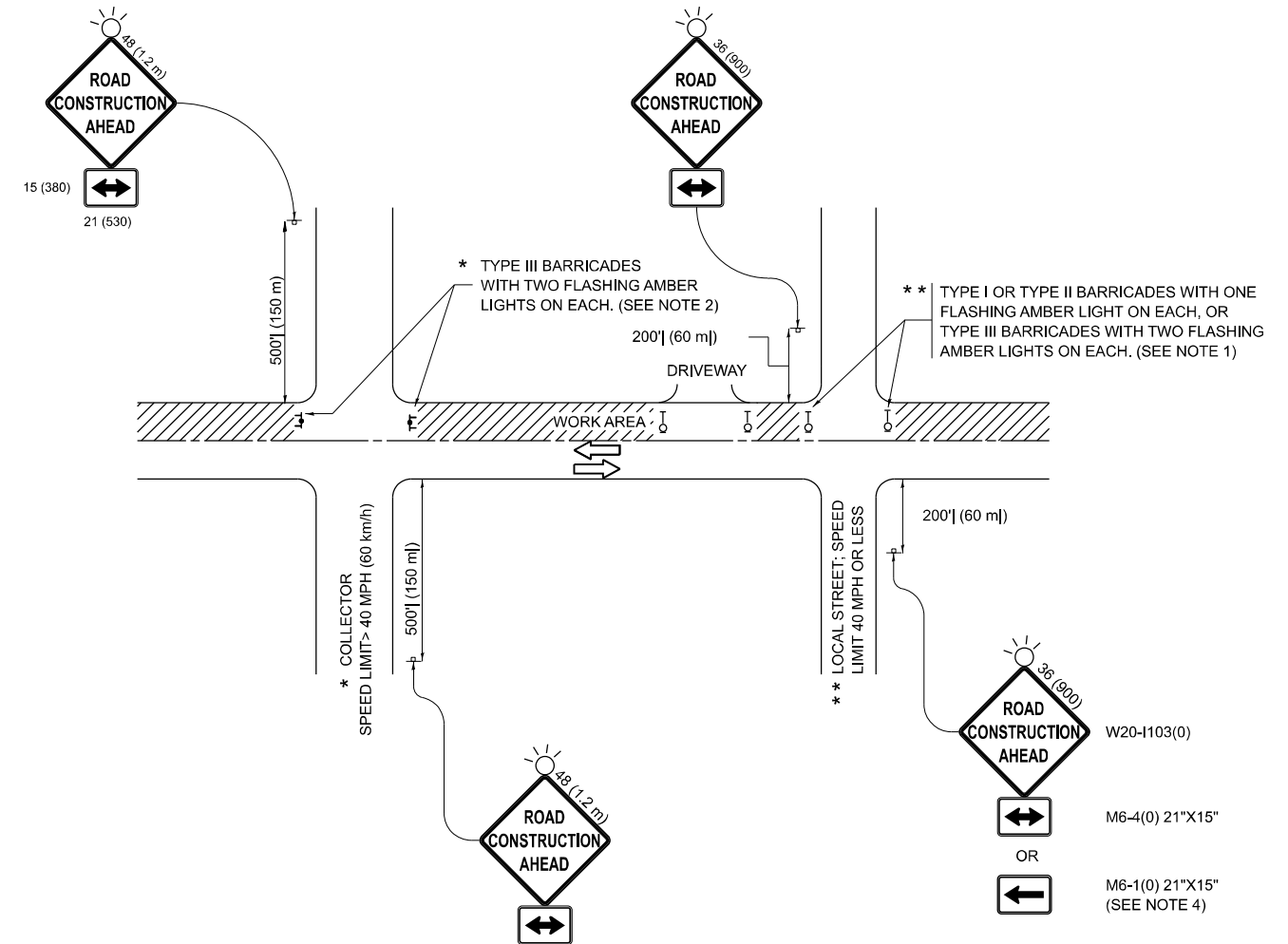
USER NAME = Nedat.Qarut	DESIGNED - D.W.S.	REVISED - S.P.B._12-09
	DRAWN - M.D._06-13	REVISED - M.D._06-13
	CHECKED -	REVISED - M.D._01-18
PLOT DATE = 2/14/2026	DATE - 02-83	REVISED - D.S._05-24

**STATE OF ILLINOIS
DEPARTMENT OF TRANSPORTATION**

**ENTRANCE AND EXIT RAMP
CLOSURE DETAILS**

SCALE: NONE SHEET 1 OF 1 SHEETS STA. TO STA.

F.A.I. RTE.	SECTION	COUNTY	TOTAL SHEETS	SHEET NO.
57	2025-2119-RS,DR	COOK	26	16
TC-08		CONTRACT NO. 80C87		
ILLINOIS		FED. AID PROJECT		



NOTES:

1. SIDE ROAD WITH A SPEED LIMIT OF 40 MPH (60 km/h) OR LESS AS SHOWN ON THE DRAWING AND AS DIRECTED BY THE ENGINEER:
 - a) ONE "ROAD CONSTRUCTION AHEAD" SIGN 36 x 36 (900x900) WITH A FLASHER MOUNTED ON IT APPROXIMATELY 200' (60 m) IN ADVANCE OF THE MAIN ROUTE.
 - b) THE CLOSED PORTION OF THE MAIN ROUTE SHALL BE PROTECTED BY BLOCKING WITH TYPE I, TYPE II OR TYPE III BARRICADES, 1/3 OF THE CROSS SECTION OF THE CLOSED PORTION.
2. SIDE ROAD WITH A SPEED LIMIT GREATER THAN 40 MPH (60 km/h) AS SHOWN ON THE DRAWING AND AS DIRECTED BY THE ENGINEER:
 - a) ONE "ROAD CONSTRUCTION AHEAD" SIGN 48 x 48 (1.2 m x 1.2 m) WITH A FLASHER MOUNTED ON IT APPROXIMATELY 500' (150 m) IN ADVANCE OF THE MAIN ROUTE.
 - b) THE CLOSED PORTION OF THE MAIN ROUTE SHALL BE PROTECTED BY BLOCKING WITH TYPE III BARRICADES, 1/2 OF THE CROSS SECTION OF THE CLOSED PORTION.
3. CONES MAY BE SUBSTITUTED FOR BARRICADES OR DRUMS AT HALF THE SPACING DURING DAY OPERATIONS. CONES SHALL BE A MINIMUM OF 28 (710) IN HEIGHT.
4. WHEN THE SIDE ROAD LIES BETWEEN THE BEGINNING OF THE MAINLINE SIGNING AND THE WORK ZONE, A SINGLE HEADED ARROW (M6-1) SHALL BE USED IN LIEU OF THE DOUBLE HEADED ARROW (M6-4).
5. WHEN WORK IS BEING PERFORMED ON A SIDE ROAD OR DRIVEWAY, FOLLOW THE APPLICABLE STANDARD(S). THE DIRECTIONAL ARROW (M6-1 OR M6-4) SHALL BE COVERED OR REMOVED WHEN NO LONGER CONSISTENT WITH THE TRAFFIC CONTROL SET-UP.
6. ADVANCE WARNING SIGNS ARE TO BE OMITTED ON DRIVEWAYS UNLESS OTHERWISE SPECIFIED IN THE PLANS OR BY THE ENGINEER.
7. THE TRAFFIC CONTROL AND PROTECTION FOR SIDE ROADS, INTERSECTIONS, AND DRIVEWAYS SHALL BE INCLUDED IN THE COST OF SPECIFIED TRAFFIC CONTROL STANDARDS OR ITEMS.

All dimensions are in inches (millimeters) unless otherwise shown.

MODEL: TC-10 (Sheet)
FILE NAME: c:\p\work\qarut\qarut\179255\179255-01-13-26-shr-dist\stas.dgn

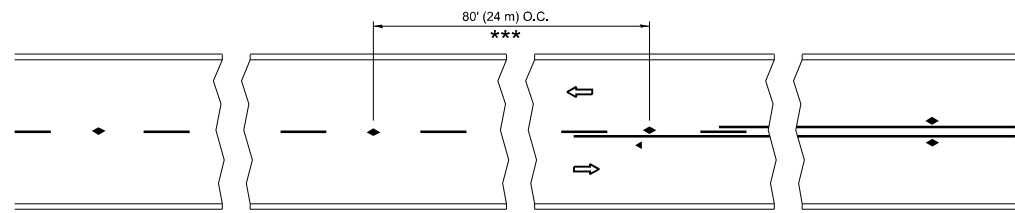
USER NAME = Nedat.Qarut	DESIGNED - L.H.A.	REVISED - T. RAMMACHER 01-06-00
	DRAWN -	REVISED - A. SCHUETZE 07-01-13
	CHECKED -	REVISED - A. SCHUETZE 09-15-06
PLOT DATE = 2/14/2026	DATE - 06-89	REVISED - D. SENDERAK 05-03-24

**STATE OF ILLINOIS
DEPARTMENT OF TRANSPORTATION**

**TRAFFIC CONTROL AND PROTECTION FOR
SIDE ROADS, INTERSECTIONS, AND DRIVEWAYS**

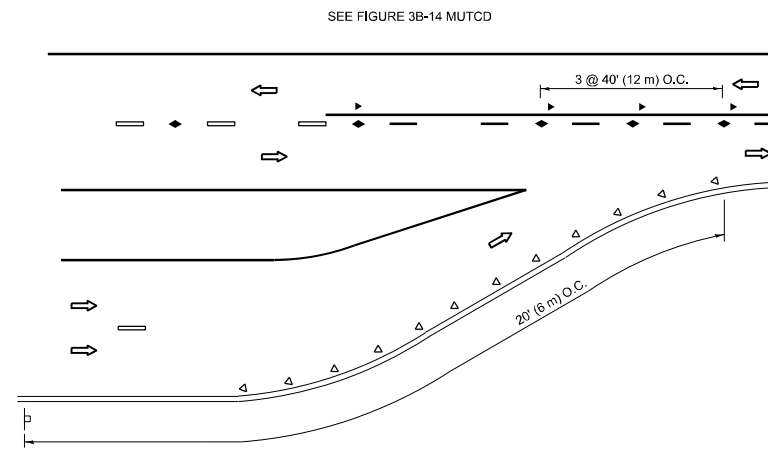
SCALE: SHEET OF SHEETS STA. TO STA.

F.A.I. RTE.	SECTION	COUNTY	TOTAL SHEETS	SHEET NO.
57	2025-2119-RS,DR	COOK	26	17
TC-10			CONTRACT NO. 80C87	
ILLINOIS FED. AID PROJECT				

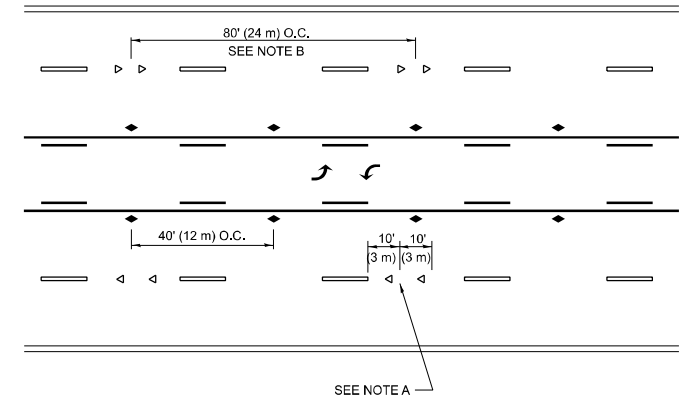


*** REDUCE TO 40' (12 m) O.C. ON CURVES WITH POSTED OR ADVISORY SPEED 45 M.P.H. (70 km/h) OR LESS.

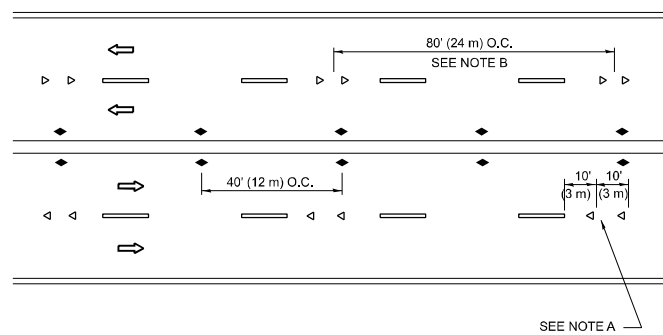
TWO-LANE/TWO-WAY



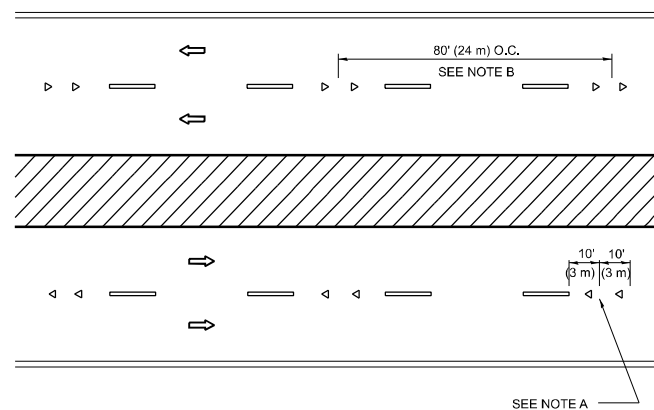
LANE REDUCTION TRANSITION



TWO-WAY LEFT TURN



MULTI-LANE/UNDIVIDED



MULTI-LANE/DIVIDED

GENERAL NOTES

1. MARKERS USED WITH DASHED LINES SHALL BE CENTERED IN THE GAP BETWEEN SEGMENTS.
2. MARKERS USED ADJACENT TO SOLID LINES SHALL BE OFFSET 2 TO 3 (50 TO 75) TOWARD TRAFFIC AS SHOWN.
3. MARKERS THROUGH TANGENTS LESS THAN 500' (150 m) IN LENGTH BETWEEN CURVES SHALL BE INSTALLED AT THE LESSER OF THE TWO CURVE SPACINGS.
4. MARKERS ARE TO BE USED ADJACENT TO BOTH SOLID WHITE LINES IN DUAL LEFT TURN LANES

SYMBOLS

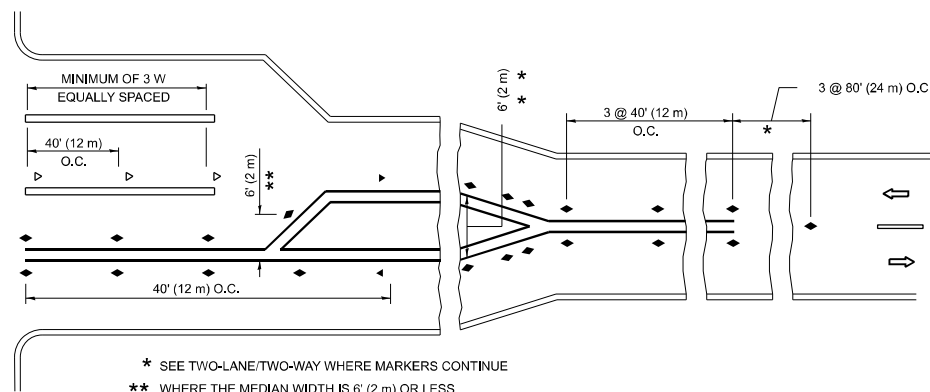
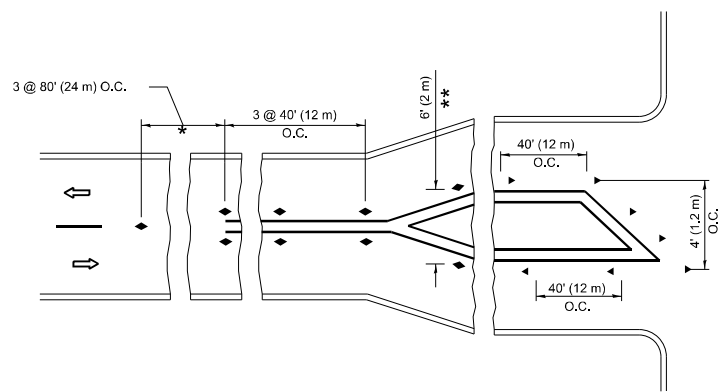
- YELLOW STRIPE
- WHITE STRIPE
- ◀ ONE-WAY AMBER MARKER
- ◀ ONE-WAY CRYSTAL MARKER (W/O)
- ◆ TWO-WAY AMBER MARKER

LANE MARKER NOTES

- A. USE DOUBLE LANE LINE MARKERS SPACED AS SHOWN.
- B. REDUCE TO 40' (12 m) O.C. ON CURVES WHERE ADVISORY SPEEDS ARE 10 M.P.H (20 km/h) LOWER THAN POSTED SPEEDS.

DESIGN NOTES

1. DOUBLE LANE LINE MARKERS SHALL BE USED UNLESS SPECIFIED OTHERWISE.
2. EXCEPT AS SHOWN ON THE LANE REDUCTION TRANSITION AND FREEWAY EXIT RAMP DETAIL, MARKERS ARE NOT TO BE SPECIFIED ON RIGHT EDGE LINES.
3. THE EXACT MARKER LIMITS, SPACING, AND COLOR SHALL BE INCLUDED IN THE PLANS WHEN STANDARD SPECIFICATIONS ARE NOT BEING USED.
4. MARKERS SHOULD NOT BE USED ALONGSIDE CURBS EXCEPT FOR EXTREMELY SHORT SECTIONS OF CURBS WHERE NOT MORE THAN TWO MARKERS WOULD BE INVOLVED.



TURN LANES

- * SEE TWO-LANE/TWO-WAY WHERE MARKERS CONTINUE
- ** WHERE THE MEDIAN WIDTH IS 6' (2 m) OR LESS USE TWO-WAY MARKERS.

All dimensions are in inches (millimeters) unless otherwise shown.

MODEL: TC-11 (Sheet)
FILE NAME: c:\p\work\project\plan\179255\179255-11-1726-shr-Dist-S&S.dgn

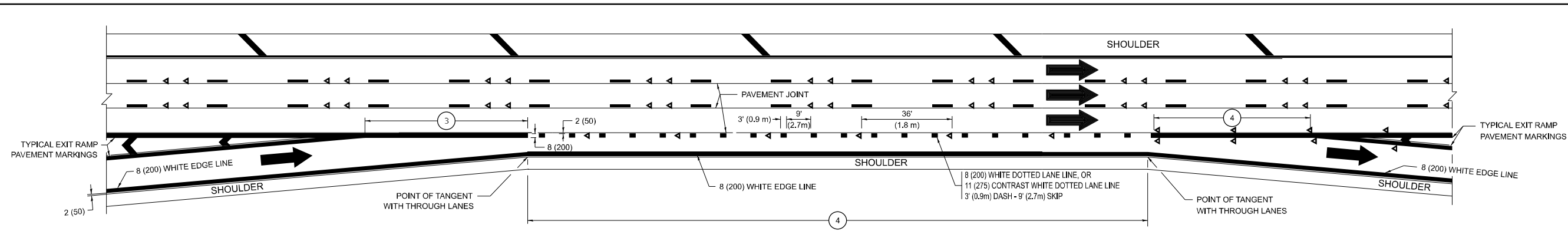
USER NAME = Nedat.Qarut	DESIGNED -	REVISED - T. RAMMACHER 03-12-99
	DRAWN -	REVISED - T. RAMMACHER 01-06-00
	CHECKED -	REVISED - C. JUCIUS 09-09-09
PLOT DATE = 2/14/2026	DATE -	REVISED - C. JUCIUS 07-01-13

STATE OF ILLINOIS
DEPARTMENT OF TRANSPORTATION

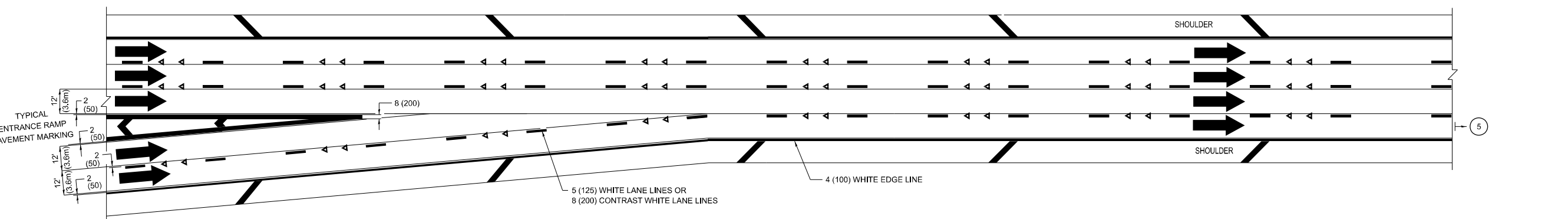
TYPICAL APPLICATIONS
RAISED REFLECTIVE PAVEMENT MARKERS (SNOW-PLOW RESISTANT)

SCALE: NONE SHEET 1 OF 1 SHEETS STA. TO STA.

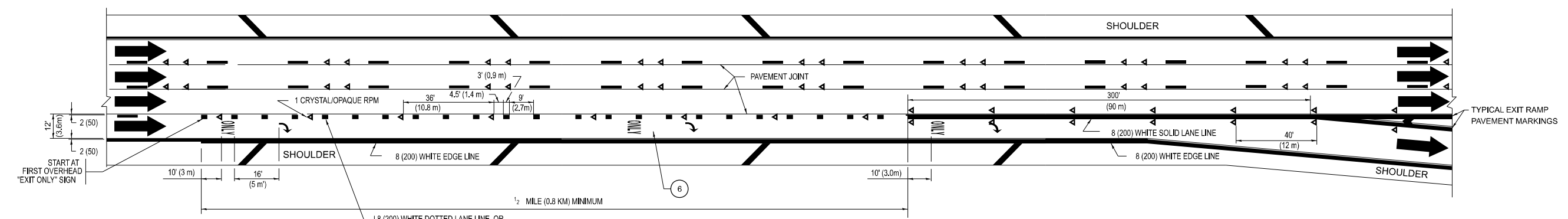
F.A.I. RTE.	SECTION	COUNTY	TOTAL SHEETS	SHEET NO.
57	2025-2119-RS,DR	COOK	26	18
TC-11			CONTRACT NO. 80C87	
ILLINOIS FED. AID PROJECT				



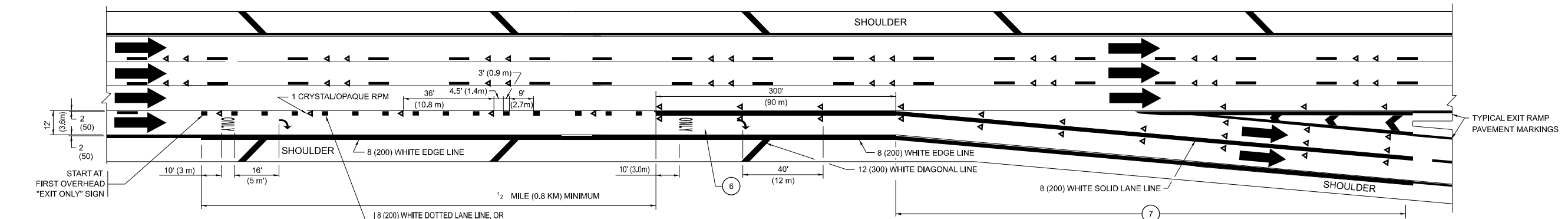
AUXILIARY LANE MARKINGS



TWO LANE ENTRANCE RAMP WITH MERGE MARKINGS



EXIT ONLY LANE MARKINGS



EXIT ONLY WITH OPTION LANE MARKINGS

- NOTES:**
- 3 OMIT WHEN LENGTH OF AUXILIARY LANE IS LESS THAN 500' (150 m).
 - 4 8-INCH WIDE DOTTED LANE LINE MARKINGS SHALL BE USED WHEN THE LENGTH OF THE AUXILIARY LANE IS 2 MILES OR LESS.
 - 5 FOR TWO-LANE ENTRANCE RAMP, IF RIGHT LANE ENDS, USE TYPICAL ENTRANCE RAMP PAVEMENT MARKINGS.
 - 6 ONLY AND ARROWS EQUALLY SPACED, 500' (150 m) MAXIMUM SPACING. FULL SIZE LETTERS AND ARROW SHALL BE USED..
 - 7 CONTINUE 8" SOLID LANE LINE THROUGH EXIT TO END OF PAVED GORE.

MODEL: TC-12b (Sheet)
FILE NAME: c:\pik_work\pav\plan\m179255\0117326-shr-Dst\Sds.dgn

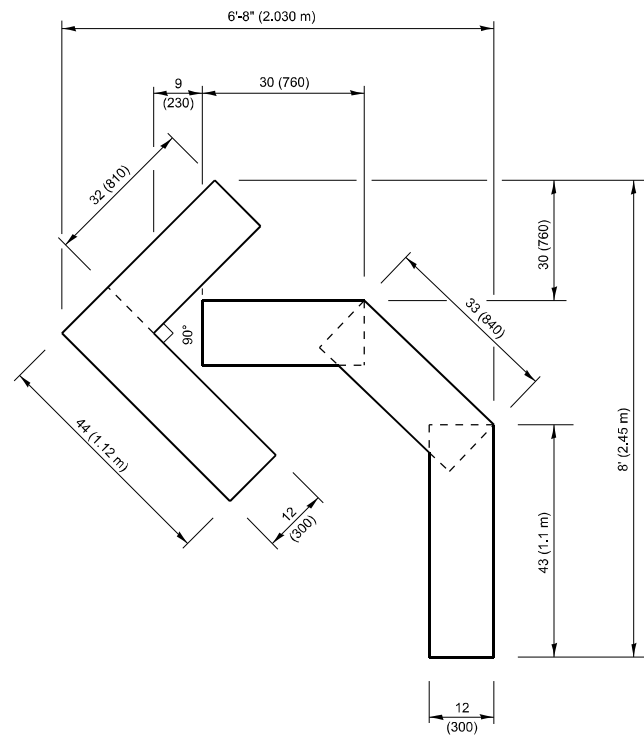
USER NAME = Nedat.Qarut	DESIGNED - D.W.S.	REVISED - J.A.F. 02-06
	DRAWN -	REVISED - S.P.B. 01-07
	CHECKED -	REVISED - S.P.B. 01-10
PLOT DATE = 2/14/2026	DATE - 01-90	REVISED - M.D. 09-17

**STATE OF ILLINOIS
DEPARTMENT OF TRANSPORTATION**

**MULTI-LANE FREEWAY
PAVEMENT MARKING DETAILS**

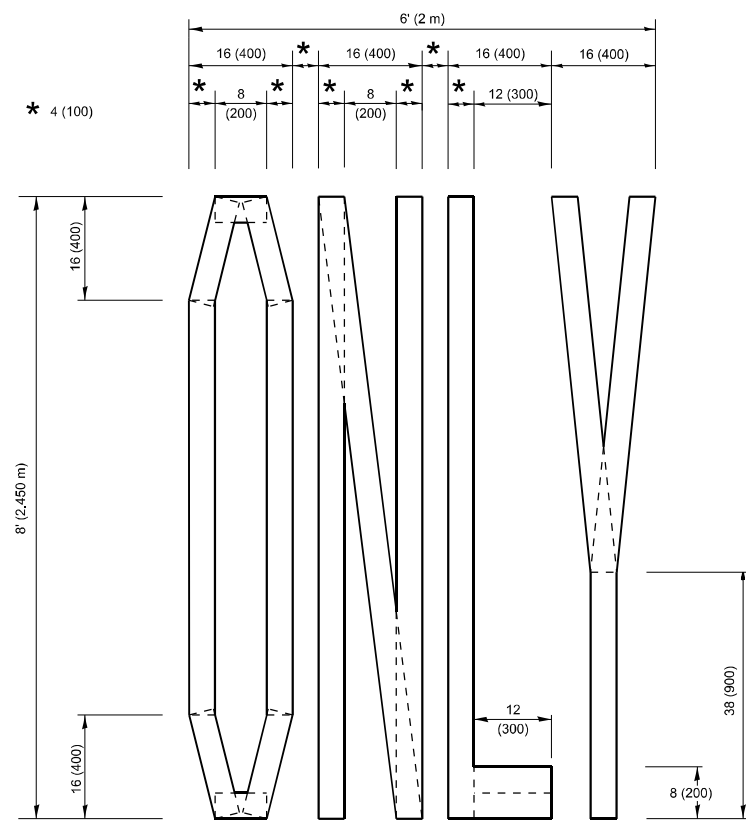
SCALE: NONE SHEET 2 OF 2 SHEETS STA. TO STA.

F.A.I. RTE.	SECTION	COUNTY	TOTAL SHEETS	SHEET NO.
57	2025-2119-RS,DR	COOK	26	20
TC-12		CONTRACT NO. 80C87		
ILLINOIS FED. AID PROJECT				



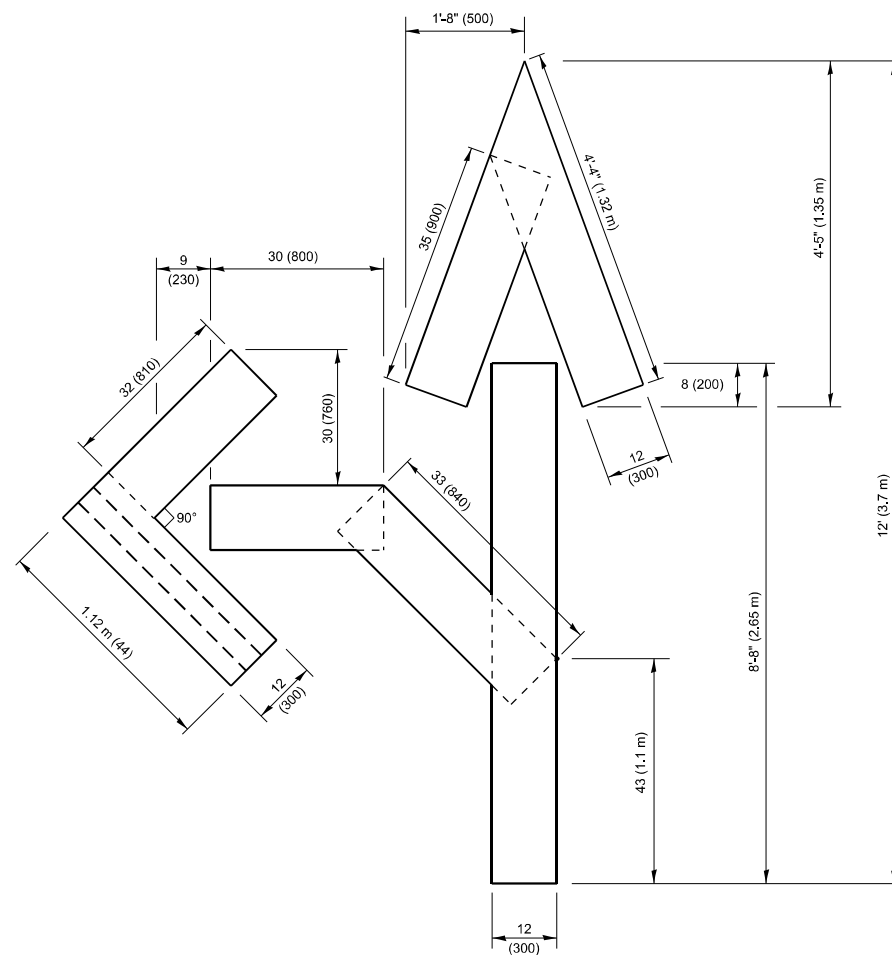
QUANTITY

4 (100) LINE = 45.5 ft. (13.9 m)
15.2 sq. ft. (1.41 sq. m)



QUANTITY

4 (100) LINE = 64.1 ft. (19.5 m)
21.4 sq. ft. (1.99 sq. m)

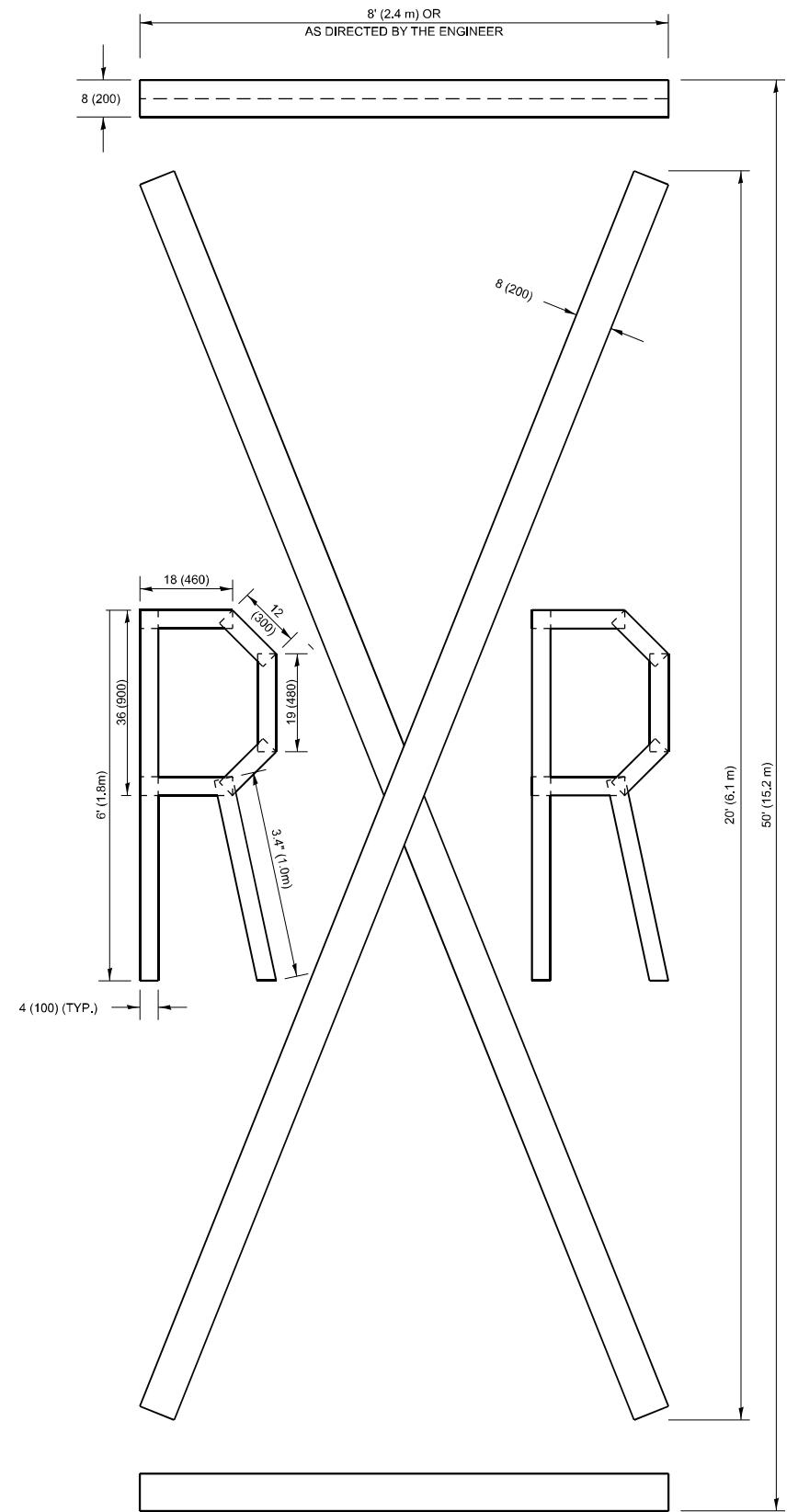


QUANTITY

4 (100) LINE = 82.5 ft. (25.1 m)
27.5 sq. ft. (2.53 sq. m)

NOTE:

ALL QUANTITIES OF PLACEMENT ARE REPRESENTED IN LINEAR FEET OF 4" LINES TO MATCH THE 4" TEMPORARY TAPE PAY ITEM AND REPRESENTS THE TOTAL QUANTITY OF 4" TAPE REQUIRED.



QUANTITY

4 (100) LINE = 225.9 ft. (68.9 m)
75.3 sq. ft. (6.99 sq. m)

All dimensions are in inches (millimeters) unless otherwise shown.

MODEL: TC-16 (Sheet)
FILE NAME: c:\p\work\pav\qcarum\1792550\17326-shr-Dist-S&S.dgn

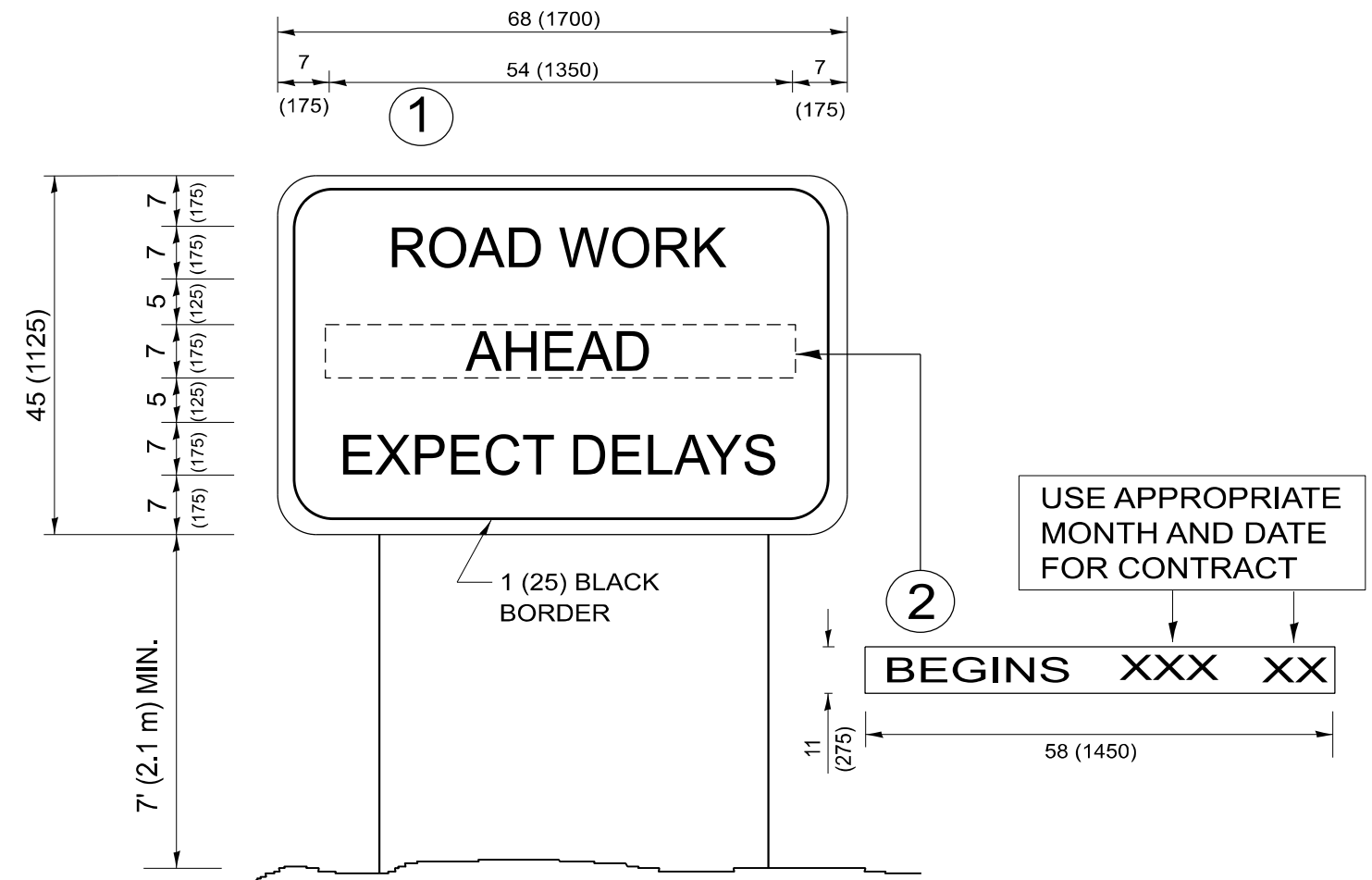
USER NAME = Nedat.Qarut	DESIGNED -	REVISED - T. RAMMACHER 03-02-98
	DRAWN -	REVISED - E. GOMEZ 08-28-00
	CHECKED -	REVISED - E. GOMEZ 08-28-00
PLOT DATE = 2/14/2026	DATE - 09-18-94	REVISED - A. SCHUETZE 09-15-16

**STATE OF ILLINOIS
DEPARTMENT OF TRANSPORTATION**

SHORT TERM PAVEMENT MARKING LETTERS AND SYMBOLS

SCALE: NONE SHEET 1 OF 1 SHEETS STA. TO STA.

F.A.I. RTE.	SECTION	COUNTY	TOTAL SHEETS	SHEET NO.
57	2025-2119-RS,DR	COOK	26	23
TC-16		CONTRACT NO. 80C87		
ILLINOIS FED. AID PROJECT				



NOTES:

1. USE BLACK LETTERING ON ORANGE BACKGROUND.
2. ERECT SIGNS IN ADVANCE OF THE LOCATION FOR THE "ROAD CONSTRUCTION AHEAD" SIGN AT LOCATIONS AS DIRECTED BY THE ENGINEER.
3. ERECT SIGN ① WITH INSTALLED PANEL ② ONE WEEK PRIOR TO THE START OF CONSTRUCTION.
4. REMOVE PANEL ② SOON AFTER THE START OF CONSTRUCTION.
5. SEE SPECIAL PROVISION FOR "TEMPORARY INFORMATION SIGNING" FOR ADDITIONAL INFORMATION.
6. ONE SIGN ASSEMBLY EQUALS 25.70 SQ. FT. (2.3 SQ. M.)
7. SHALL BE PAID FOR AS TEMPORARY INFORMATION SIGNING.

ALL DIMENSIONS ARE IN INCHES (MILLIMETERS)
UNLESS OTHERWISE SHOWN.

MODEL: TC-22 (Sheet)
FILE NAME: c:\p\work\work\garut\mtd179255\0117326-shi-Dist\Sigs.dgn

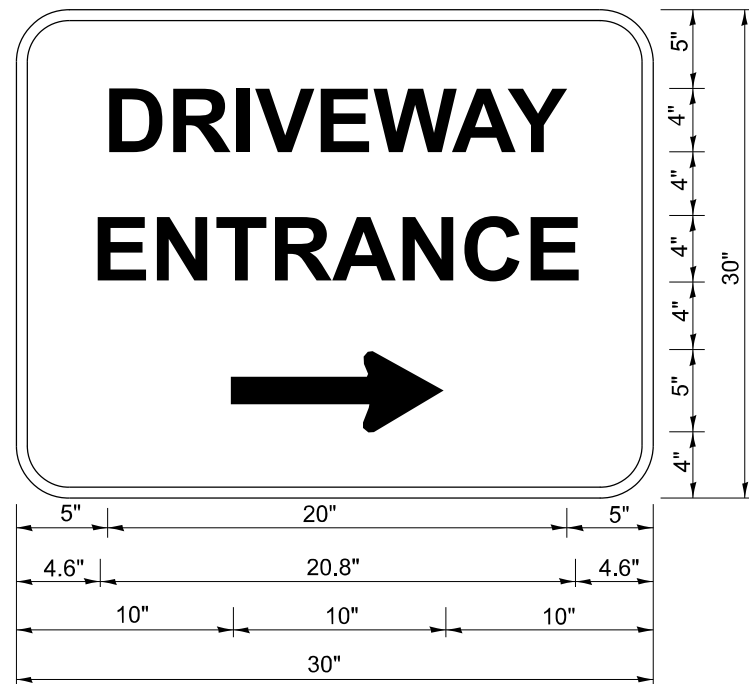
USER NAME = Nedat.Qarut	DESIGNED -	REVISED - R. MIRS 09-15-97
	DRAWN -	REVISED - R. MIRS 12-11-97
	CHECKED -	REVISED - T. RAMMACHER 02-02-99
PLOT DATE = 2/14/2026	DATE -	REVISED - C. JUCIUS 01-31-07

**STATE OF ILLINOIS
DEPARTMENT OF TRANSPORTATION**

**ARTERIAL ROAD
INFORMATION SIGN**

SCALE: NONE SHEET 1 OF 1 SHEETS STA. TO STA.

F.A.I. RTE.	SECTION	COUNTY	TOTAL SHEETS	SHEET NO.
57	2025-2119-RS,DR	COOK	26	25
TC-22			CONTRACT NO. 80C87	
ILLINOIS FED. AID PROJECT				



3.0" RADIUS, 0.5" BORDER, WHITE ON GREEN; REFLECTORIZED
 "DRIVEWAY" D; "ENTRANCE" D; STANDARD ARROW CUSTOM 12.0" x 5.0"

NOTES:

1. HALF OF THE SIGNS WILL REQUIRE A LEFT HAND FACING ARROW.
2. TWO SIGNS SHALL BE USED AT EACH COMMERCIAL ENTRANCE PLACED BACK-TO-BACK: ONE WITH A RIGHT HAND ARROW (SHOWN) SHALL BE PLACED ON THE NEAR RIGHT SIDE THE DRIVEWAY AND ONE WITH A LEFT HAND ARROW SHALL BE PLACED ON THE FAR LEFT SIDE OF THE DRIVEWAY.
3. SIGNS TO BE PAID FOR AS ITEM "TEMPORARY INFORMATION SIGNING".

MODEL: TC-26 (Sheet)
 FILE NAME: c:\p\work\project\garumid179255\ID17326-shit-Dist\Sigs.dgn

USER NAME = Nedat.Qarut	DESIGNED -	REVISED - C. JUCIUS 02-15-07
	DRAWN -	REVISED -
	CHECKED -	REVISED -
PLOT DATE = 2/14/2026	DATE -	REVISED -

**STATE OF ILLINOIS
 DEPARTMENT OF TRANSPORTATION**

DRIVEWAY ENTRANCE SIGNING

SCALE: NONE SHEET 1 OF 1 SHEETS STA. TO STA.

F.A.I. RTE.	SECTION	COUNTY	TOTAL SHEETS	SHEET NO.
57	2025-2119-RS,DR	COOK	26	26
TC-26			CONTRACT NO. 80C87	
ILLINOIS FED. AID PROJECT				