



Illinois Department of Transportation

2300 South Dirksen Parkway / Springfield, Illinois / 62764

July 24, 2008

SUBJECT: FAI Route 363
Project ACIM-055-6 (232) 255
Section (26, 26HB-1 & 114)R-2
Will County
Contract No. 60363
Item No. 1X, August 1, 2008 Letting
Addendum A

NOTICE TO PROSPECTIVE BIDDERS:

Attached is an addendum to the plans or proposal. This addendum involves revised and/or added material.

1. Revised pages 4 – 7, 12, 13, 17 & 21 – 23 of the Schedule of Prices.
2. Revised the entire Table of Contents to the Special Provisions.
3. Revised pages 6 – 13, 66 – 68, 72, 73 & 210 of the Special Provisions.
4. Added pages 288 - 302 to the Special Provisions.
5. Revised sheets 2, 6, 8, 10 – 12, 16 – 18, 25, 44, 45, 48, 62, 74, 89, 99, 104, 110, 118, 137, 138, 141, 142, 148, 150, 199, 209, 220, 264 – 266, 269, 276, 286, 319 & 415 of the Plans.

Prime contractors must utilize the enclosed material when preparing their bid and must include any Schedule of Prices changes in their bidding proposal.

Bidders using computer-generated bids are cautioned to reflect any and all Schedule of Prices changes, if involved, into their computer programs.

Very truly yours,

Eric E. Harm
Interim Bureau Chief
Bureau of Design and Environment

A handwritten signature in black ink, appearing to read 'Ted B. Walschleger' with a small 'P.E.' to the right.

By: Ted B. Walschleger, P. E.
Engineer of Project Management

cc: Diane O'Keefe, Region 1, District 1; N. R. Stoner; Mike Renner; R. E. Anderson; Estimates

TBW:MS:jc

ILLINOIS DEPARTMENT OF TRANSPORTATION
 SCHEDULE OF PRICES
 CONTRACT
 NUMBER -

60363

State Job # - C-91-263-97
 PPS NBR - 1-70856-0500
 County Name - WILL - -
 Code - 197 - -
 District - 1 - -
 Section Number - (26,26HB-1&114)R-2

Project Number
 ACIM-0556/232/255

Route
 FAI 55

| Item Number | Pay Item Description | Unit of Measure | Quantity | x | Unit Price | = | Total Price | |
|-------------|-----------------------|-----------------|---------------------------|---|------------|---|-------------|--|
| X0324044 | EROS CON TEMP P SL DR | EACH | 11.000 | | | | | |
| X0324045 | SED CON STAB CON EN R | EACH | 6.000 | | | | | |
| X0324387 | LUM SFTY C ASSEMBLY | EACH | 83.000 | | | | | |
| X0324413 | CON EM ST 2.5 PVC S40 | FOOT | 420.000 | | | | | |
| X0324775 | SED CON STAB CON EN M | SQ YD | 300.000 | | | | | |
| X0325239 | TEMP PAVT 10 | SQ YD | 10,431.000 | | | | | |
| * X0325035 | PT NEW COM MA&P <40FT | EACH | 2.000 | | | | | |
| * X0325037 | PAINT NEW SIGNAL POST | EACH | 3.000 | | | | | |
| X0325733 | TEMP ASPHALT WEDGE | SQ YD | 305.000 | | | | | |
| X0325775 | WET RF TEM TAPE T3 4 | FOOT | 140,833.000 | | | | | |
| * X0325837 | WET RF TEM TAPE T3 6 | FOOT | 2,053.000 | | | | | |
| X0325840 | WET RF TEM TAPE T3 12 | FOOT | 6,298.000 | | | | | |
| X0325841 | WET RF TEM TAPE T3 24 | FOOT | 407.000 | | | | | |
| X0325842 | WET RF TEM TAPE T3 LS | SQ FT | 318.000 | | | | | |
| X0325864 | BR APPROACH PVT REM | SQ YD | 438.000 | | | | | |
| X0325876 | WET RF TEM TAPE T3 8 | FOOT | 4,135.000 | | | | | |
| X0326015 | LT P CIP VL SHOREWOOD | EACH | 48.000 | | | | | |
| | | | * REVISED : JULY 21, 2008 | | | | | |

ILLINOIS DEPARTMENT OF TRANSPORTATION
SCHEDULE OF PRICES
CONTRACT
NUMBER -

60363

State Job # - C-91-263-97
PPS NBR - 1-70856-0500
County Name - WILL - -
Code - 197 - -
District - 1 - -
Section Number - (26,26HB-1&114)R-2

Project Number
ACIM-0556/232/255

Route
FAI 55

| Item Number | Pay Item Description | Unit of Measure | Quantity | x | Unit Price | = | Total Price |
|---------------------------|-----------------------|-----------------|------------|---|------------|---|-------------|
| X0326016 | ELCBL C LT 2C 10 | FOOT | 415.000 | | | | |
| X0326017 | CONC MEDIAN SURF 5 SP | SQ FT | 13,720.000 | | | | |
| X0326018 | JUN BOX EMS NM21X11X8 | EACH | 2.000 | | | | |
| X0326019 | LT P A 47.5MH 6DA | EACH | 2.000 | | | | |
| X0326020 | UTILTY PROTECTION PAD | SQ YD | 675.000 | | | | |
| X0326021 | UD 4#6#6GXLPUSE 1 1/4 | FOOT | 9,860.000 | | | | |
| X0326107 | WET RF TEM TAPE T3 5 | FOOT | 9,457.000 | | | | |
| X0326108 | EC C EPR RHW3C#10#10G | FOOT | 400.000 | | | | |
| * X0326164 | PAINT M A&P UND 40 | EACH | 1.000 | | | | |
| * X0326165 | STORM SEW WM REQ 72 | FOOT | 25.000 | | | | |
| X2800500 | INLET PROTECTION SPL | EACH | 8.000 | | | | |
| X4021000 | TEMP ACCESS- PRIV ENT | EACH | 26.000 | | | | |
| X4022000 | TEMP ACCESS- COM ENT | EACH | 13.000 | | | | |
| X4023000 | TEMP ACCESS- ROAD | EACH | 12.000 | | | | |
| X6060500 | CORRUGATED MED REM | SQ FT | 785.000 | | | | |
| X6700410 | ENGR FLD OFF A SPL | CAL MO | 34.000 | | | | |
| X6700600 | ENGR FIELD LAB SPL | CAL MO | 24.000 | | | | |
| * REVISED : JULY 21, 2008 | | | | | | | |

ILLINOIS DEPARTMENT OF TRANSPORTATION
 SCHEDULE OF PRICES
 CONTRACT
 NUMBER - 60363

State Job # - C-91-263-97
 PPS NBR - 1-70856-0500
 County Name - WILL - -
 Code - 197 - -
 District - 1 - -
 Section Number - (26,26HB-1&114)R-2

Project Number
 ACIM-0556/232/255

Route
 FAI 55

| Item Number | Pay Item Description | Unit of Measure | Quantity | x | Unit Price | = | Total Price |
|---------------------------|-----------------------|-----------------|------------|---|------------|---|-------------|
| X7011015 | TR C-PROT EXPRESSWAYS | L SUM | 1.000 | | | | |
| X7013820 | TR CONT SURVEIL EXPWY | CAL DA | 273.000 | | | | |
| X7330105 | OSS WALKWAY TY A | FOOT | 48.000 | | | | |
| X8050015 | SERV INSTALL POLE MT | EACH | 1.000 | | | | |
| X8160395 | UD 3#2 #4G EPRRH1.5 | FOOT | 17,100.000 | | | | |
| X8250110 | LTG CT RCD C-TY SCADA | EACH | 1.000 | | | | |
| X8420090 | REM EXIST SIGN LUM | EACH | 4.000 | | | | |
| X8420140 | REM EX LU & LUM SALV | EACH | 12.000 | | | | |
| X8420200 | REM EX LT TOWER & SAL | EACH | 4.000 | | | | |
| X8420300 | LGTING FDN REM LT TOW | EACH | 4.000 | | | | |
| X8450100 | REMOV EX LT CONT/SALV | EACH | 1.000 | | | | |
| X8730027 | ELCBL C GROUND 6 1C | FOOT | 589.000 | | | | |
| X8730250 | ELCBL C 20 3C TW SH | FOOT | 313.000 | | | | |
| Z0001050 | AGG SUBGRADE 12 | SQ YD | 86,009.000 | | | | |
| * DELETED | | | | | | | |
| * Z0007601 | BLDG REMOV NO 1 | L SUM | 1.000 | | | | |
| * REVISED : JULY 21, 2008 | | | | | | | |

ILLINOIS DEPARTMENT OF TRANSPORTATION
 SCHEDULE OF PRICES
 CONTRACT
 NUMBER -

60363

State Job # - C-91-263-97
 PPS NBR - 1-70856-0500
 County Name - WILL - -
 Code - 197 - -
 District - 1 - -
 Section Number - (26,26HB-1&114)R-2

Project Number
 ACIM-0556/232/255

Route
 FAI 55

| Item Number | Pay Item Description | Unit of Measure | Quantity | x | Unit Price | = | Total Price |
|---------------------------|-----------------------|-----------------|-----------|---|------------|---|-------------|
| Z0013798 | CONSTRUCTION LAYOUT | L SUM | 1.000 | | | | |
| Z0016200 | DECK SLAB REP (PART) | SQ YD | 110.000 | | | | |
| Z0018500 | DRAINAGE STR CLEANED | EACH | 1.000 | | | | |
| * Z0018700 | DRAINAGE STR REMOVED | EACH | 32.000 | | | | |
| Z0030250 | IMP ATTN TEMP NRD TL3 | EACH | 6.000 | | | | |
| Z0030350 | IMP ATTN REL NRD TL3 | EACH | 16.000 | | | | |
| * Z0049901 | R&D NON-FR ASB BLD 1 | L SUM | 1.000 | | | | |
| Z0064600 | SELECTIVE CLEARING | ACRE | 2.400 | | | | |
| Z0065745 | SLOT DR 12" W/2.5" SL | FOOT | 381.000 | | | | |
| Z0076600 | TRAINEES | HOUR | 5,000.000 | | 0.800 | | 4,000.000 |
| Z0077700 | WOOD FENCE REM & RE-E | FOOT | 438.000 | | | | |
| 20100110 | TREE REMOV 6-15 | UNIT | 1,706.000 | | | | |
| 20100210 | TREE REMOV OVER 15 | UNIT | 1,125.000 | | | | |
| 20101000 | TEMPORARY FENCE | FOOT | 4,375.000 | | | | |
| 20101100 | TREE TRUNK PROTECTION | EACH | 121.000 | | | | |
| 20101350 | TREE PRUN OVER 10 | EACH | 11.000 | | | | |
| * REVISED : JULY 21, 2008 | | | | | | | |

ILLINOIS DEPARTMENT OF TRANSPORTATION
 SCHEDULE OF PRICES
 CONTRACT
 NUMBER -

60363

State Job # - C-91-263-97
 PPS NBR - 1-70856-0500
 County Name - WILL - -
 Code - 197 - -
 District - 1 - -
 Section Number - (26,26HB-1&114)R-2

Project Number
 ACIM-0556/232/255

Route
 FAI 55

| Item Number | Pay Item Description | Unit of Measure | Quantity | x | Unit Price | = | Total Price | |
|-------------|----------------------|-----------------|---------------------------|---|------------|---|-------------|--|
| 44003510 | MEDIAN REMOVAL (PD) | SQ FT | 2,608.000 | | | | | |
| 44004000 | PAVED DITCH REMOVAL | FOOT | 75.000 | | | | | |
| 44004250 | PAVED SHLD REMOVAL | SQ YD | 12,059.000 | | | | | |
| 44201741 | CL D PATCH T2 8 | SQ YD | 32.000 | | | | | |
| 44201745 | CL D PATCH T3 8 | SQ YD | 39.000 | | | | | |
| 44201747 | CL D PATCH T4 8 | SQ YD | 1,083.000 | | | | | |
| 44201771 | CL D PATCH T4 10 | SQ YD | 71.000 | | | | | |
| 44201869 | CL D PATCH T4 18 | SQ YD | 352.000 | | | | | |
| 48101200 | AGGREGATE SHLDS B | TON | 1,118.000 | | | | | |
| 48101500 | AGGREGATE SHLDS B 6 | SQ YD | 3,968.000 | | | | | |
| 48101600 | AGGREGATE SHLDS B 8 | SQ YD | 4,020.000 | | | | | |
| * 48203029 | HMA SHOULDERS 8 | SQ YD | 9,150.000 | | | | | |
| 48203049 | HMA SHOULDERS 13 | SQ YD | 7,695.000 | | | | | |
| 50100200 | REM EXIST STRUCT | L SUM | 1.000 | | | | | |
| 50102400 | CONC REM | CU YD | 123.000 | | | | | |
| | | | * REVISED : JULY 21, 2008 | | | | | |

ILLINOIS DEPARTMENT OF TRANSPORTATION
 SCHEDULE OF PRICES
 CONTRACT
 NUMBER -

60363

State Job # - C-91-263-97
 PPS NBR - 1-70856-0500
 County Name - WILL - -
 Code - 197 - -
 District - 1 - -
 Section Number - (26,26HB-1&114)R-2

Project Number
 ACIM-0556/232/255

Route
 FAI 55

| Item Number | Pay Item Description | Unit of Measure | Quantity | x | Unit Price | = | Total Price | |
|-------------|-----------------------|-----------------|---------------------------|---|------------|---|-------------|--|
| 50104400 | CONC HDWL REM | EACH | 10.000 | | | | | |
| * 50105220 | PIPE CULVERT REMOV | FOOT | 3,090.000 | | | | | |
| 50200100 | STRUCTURE EXCAVATION | CU YD | 2,276.000 | | | | | |
| 50200400 | ROCK EXC STRUCT | CU YD | 2,619.000 | | | | | |
| 50300225 | CONC STRUCT | CU YD | 563.400 | | | | | |
| 50300255 | CONC SUP-STR | CU YD | 347.000 | | | | | |
| 50300260 | BR DECK GROOVING | SQ YD | 1,379.000 | | | | | |
| 50300300 | PROTECTIVE COAT | SQ YD | 2,153.000 | | | | | |
| 50300510 | RUSTICATION FINISH | SQ FT | 2,591.000 | | | | | |
| 50500105 | F & E STRUCT STEEL | L SUM | 1.000 | | | | | |
| 50500405 | F & E STRUCT STEEL | POUND | 1,640.000 | | | | | |
| 50500505 | STUD SHEAR CONNECTORS | EACH | 3,204.000 | | | | | |
| * 50800105 | REINFORCEMENT BARS | POUND | 57,500.000 | | | | | |
| 50800205 | REINF BARS, EPOXY CTD | POUND | 118,750.000 | | | | | |
| 50800515 | BAR SPLICERS | EACH | 60.000 | | | | | |
| | | | * REVISED : JULY 21, 2008 | | | | | |

ILLINOIS DEPARTMENT OF TRANSPORTATION
 SCHEDULE OF PRICES
 CONTRACT
 NUMBER -

60363

State Job # - C-91-263-97
 PPS NBR - 1-70856-0500
 County Name - WILL - -
 Code - 197 - -
 District - 1 - -
 Section Number - (26,26HB-1&114)R-2

Project Number
 ACIM-0556/232/255

Route
 FAI 55

| Item Number | Pay Item Description | Unit of Measure | Quantity | x | Unit Price | = | Total Price |
|---------------------------|----------------------|-----------------|-----------|---|------------|---|-------------|
| 550A0200 | STORM SEW CL A 1 54 | FOOT | 208.000 | | | | |
| 550A0210 | STORM SEW CL A 1 60 | FOOT | 427.000 | | | | |
| * 550A0230 | STORM SEW CL A 1 72 | FOOT | 620.000 | | | | |
| 550A0260 | STORM SEW CL A 1 90 | FOOT | 146.000 | | | | |
| 550A0340 | STORM SEW CL A 2 12 | FOOT | 3,257.000 | | | | |
| 550A0360 | STORM SEW CL A 2 15 | FOOT | 1,729.000 | | | | |
| 550A0380 | STORM SEW CL A 2 18 | FOOT | 368.000 | | | | |
| 550A0410 | STORM SEW CL A 2 24 | FOOT | 5.000 | | | | |
| 550A0420 | STORM SEW CL A 2 27 | FOOT | 326.000 | | | | |
| 550A0520 | STORM SEW CL A 2 72 | FOOT | 209.000 | | | | |
| 550A2410 | SS RG CL A 1 42 | FOOT | 187.000 | | | | |
| 550A2420 | SS RG CL A 1 48 | FOOT | 131.000 | | | | |
| 550A2540 | SS RG CL A 2 18 | FOOT | 645.000 | | | | |
| 550A2550 | SS RG CL A 2 21 | FOOT | 345.000 | | | | |
| 550A2560 | SS RG CL A 2 24 | FOOT | 374.000 | | | | |
| * REVISED : JULY 21, 2008 | | | | | | | |

ILLINOIS DEPARTMENT OF TRANSPORTATION
 SCHEDULE OF PRICES
 CONTRACT
 NUMBER - 60363

State Job # - C-91-263-97
 PPS NBR - 1-70856-0500
 County Name - WILL - -
 Code - 197 - -
 District - 1 - -
 Section Number - (26,26HB-1&114)R-2

Project Number
 ACIM-0556/232/255

Route
 FAI 55

| Item Number | Pay Item Description | Unit of Measure | Quantity | x | Unit Price | = | Total Price | |
|-------------|-----------------------|-----------------|---------------------------|---|------------|---|-------------|--|
| 60603800 | COMB CC&G TB6.12 | FOOT | 32.000 | | | | | |
| 60605000 | COMB CC&G TB6.24 | FOOT | 13,993.000 | | | | | |
| 60605400 | COMB CC&G TB6.24 SPL | FOOT | 75.000 | | | | | |
| 60616110 | PAVED DITCH TA-30 | FOOT | 45.000 | | | | | |
| 60618300 | CONC MEDIAN SURF 4 | SQ FT | 486.000 | | | | | |
| 60624600 | CORRUGATED MED | SQ FT | 458.000 | | | | | |
| * 63000000 | SPBGR TY A | FOOT | 6,268.000 | | | | | |
| 63000005 | SPBGR TY B | FOOT | 357.000 | | | | | |
| * 63100045 | TRAF BAR TERM T2 | EACH | 11.000 | | | | | |
| 63100070 | TRAF BAR TERM T5 | EACH | 2.000 | | | | | |
| 63100085 | TRAF BAR TERM T6 | EACH | 4.000 | | | | | |
| * 63100167 | TR BAR TRM T1 SPL TAN | EACH | 8.000 | | | | | |
| 63100169 | TR BAR TRM T1 SPL FLR | EACH | 3.000 | | | | | |
| 63200600 | SPBGR REM SINGLE RAIL | FOOT | 4,321.000 | | | | | |
| 63200700 | SPBGR REM DOUBLE RAIL | FOOT | 217.000 | | | | | |
| | | | * REVISED : JULY 21, 2008 | | | | | |

ILLINOIS DEPARTMENT OF TRANSPORTATION
 SCHEDULE OF PRICES
 CONTRACT
 NUMBER -

60363

State Job # - C-91-263-97
 PPS NBR - 1-70856-0500
 County Name - WILL - -
 Code - 197 - -
 District - 1 - -
 Section Number - (26,26HB-1&114)R-2

Project Number
 ACIM-0556/232/255

Route
 FAI 55

| Item Number | Pay Item Description | Unit of Measure | Quantity | x | Unit Price | = | Total Price |
|---------------------------|-----------------------|-----------------|------------|---|------------|---|-------------|
| 63500105 | DELINEATORS | EACH | 206.000 | | | | |
| 63500120 | DELINEATOR REMOVAL | EACH | 20.000 | | | | |
| 63700157 | CONC BAR 1F 32HT MOD | FOOT | 87.000 | | | | |
| 63700275 | CONC BAR 2F 42HT | FOOT | 46.000 | | | | |
| 63700900 | CONC BARRIER BASE | FOOT | 135.000 | | | | |
| 64200105 | SHOULDER RUMBLE STRIP | FOOT | 23,689.000 | | | | |
| 66400105 | CH LK FENCE 4 | FOOT | 10,712.000 | | | | |
| 66405700 | CH LK GATES 4X10 DBL | EACH | 2.000 | | | | |
| 66502300 | WOV W FENCE REMOV | FOOT | 7,090.000 | | | | |
| * 66502400 | WOV W FENCE REM & RE | FOOT | 334.000 | | | | |
| 66600105 | FUR ERECT ROW MARKERS | EACH | 37.000 | | | | |
| 66900400 | SPL WAST GRD WAT DISP | GALLON | 8,980.000 | | | | |
| 66900450 | SPL WASTE PLNS/REPORT | L SUM | 1.000 | | | | |
| 66900530 | SOIL DISPOSAL ANALY | EACH | 2.000 | | | | |
| 66901000 | BACKFILL PLUGS | CU YD | 40.000 | | | | |
| 67100100 | MOBILIZATION | L SUM | 1.000 | | | | |
| * REVISED : JULY 21, 2008 | | | | | | | |

ILLINOIS DEPARTMENT OF TRANSPORTATION
 SCHEDULE OF PRICES
 CONTRACT
 NUMBER - 60363

State Job # - C-91-263-97
 PPS NBR - 1-70856-0500
 County Name - WILL - -
 Code - 197 - -
 District - 1 - -
 Section Number - (26,26HB-1&114)R-2

Project Number
 ACIM-0556/232/255

Route
 FAI 55

| Item Number | Pay Item Description | Unit of Measure | Quantity | x | Unit Price | = | Total Price |
|---------------------------|-----------------------|-----------------|------------|---|------------|---|-------------|
| 67201000 | SEAL ABAN WATER WELLS | EACH | 2.000 | | | | |
| 70101800 | TRAF CONT & PROT SPL | L SUM | 1.000 | | | | |
| 70102550 | TR CONT-PROT TEMP DET | EACH | 2.000 | | | | |
| 70103815 | TR CONT SURVEILLANCE | CAL DA | 270.000 | | | | |
| 70106800 | CHANGEABLE MESSAGE SN | CAL MO | 48.000 | | | | |
| 70300210 | TEMP PVT MK LTR & SYM | SQ FT | 88.000 | | | | |
| 70300220 | TEMP PVT MK LINE 4 | FOOT | 6,155.000 | | | | |
| 70300240 | TEMP PVT MK LINE 6 | FOOT | 484.000 | | | | |
| 70300260 | TEMP PVT MK LINE 12 | FOOT | 384.000 | | | | |
| 70300280 | TEMP PVT MK LINE 24 | FOOT | 13.000 | | | | |
| 70400100 | TEMP CONC BARRIER | FOOT | 7,375.000 | | | | |
| 70400200 | REL TEMP CONC BARRIER | FOOT | 12,249.000 | | | | |
| * 72000100 | SIGN PANEL T1 | SQ FT | 573.000 | | | | |
| 72000200 | SIGN PANEL T2 | SQ FT | 131.000 | | | | |
| 72000300 | SIGN PANEL T3 | SQ FT | 1,221.000 | | | | |
| * REVISED : JULY 21, 2008 | | | | | | | |

TABLE OF CONTENTS

| | |
|--|----|
| LOCATION OF PROJECT | 1 |
| DESCRIPTION OF PROJECT | 2 |
| COMPLETION DATE PLUS WORKING DAYS..... | 2 |
| COORDINATION WITH ADJACENT CONTRACTS | 3 |
| WINTER WORK..... | 3 |
| FAILURE TO COMPLETE THE WORK ON TIME | 3 |
| RESTRICTION ON WORKING DAYS AFTER A COMPLETION DATE | 4 |
| MAINTENANCE OF ROADWAYS..... | 4 |
| ENGINEER’S FIELD OFFICE TYPE A (SPECIAL) AND LABORATORY (SPECIAL)..... | 4 |
| STATUS OF UTILITIES TO BE ADJUSTED | 6 |
| PROGRESS SCHEDULE | 13 |
| REINFORCEMENT BARS - STORAGE AND PROTECTION (BDE)..... | 13 |
| EROSION CONTROL..... | 18 |
| INLET FILTER CLEANING | 18 |
| EROSION AND SEDIMENT CONTROLS | 18 |
| ROADWAY..... | 26 |
| AGGREGATE SUBGRADE, 12" (300 MM) | 26 |
| POROUS GRANULAR EMBANKMENT, SUBGRADE..... | 27 |
| EMBANKMENT STABILITY..... | 29 |
| ANTI-STRIP ADDITIVE FOR HMA (DISTRICT ONE)..... | 29 |
| HOT MIX ASPHALT – DENSITY TESTING OF LONGITUDINAL JOINTS (D-1) | 29 |
| BITUMINOUS PRIME COAT FOR HOT-MIX ASPHALT PAVEMENT (FULL DEPTH) (D-1)..... | 31 |
| FINE AGGREGATE FOR HOT-MIX ASPHALT (HMA) (DISTRICT ONE) | 31 |
| TEMPERATURE CONTROL FOR CONCRETE PLACEMENT (DISTRICT ONE)..... | 31 |
| AGGREGATE SURFACE COURSE FOR TEMPORARY ACCESS..... | 31 |
| AGGREGATE FOR CONCRETE BARRIER (DISTRICT ONE) | 32 |
| UTILITY PROTECTION PAD..... | 33 |
| BRIDGE APPROACH PAVEMENT REMOVAL | 33 |
| BRIDGE APPROACH PAVEMENT (SPECIAL) | 33 |
| AGGREGATE SHOULDERS, TYPE B..... | 34 |
| STEEL PLATE BEAM GUARDRAIL REMOVAL | 34 |
| CONCRETE MEDIAN SURFACE, 5" (SPECIAL)..... | 35 |
| WOVEN WIRE FENCE REMOVAL | 35 |
| CORRUGATED MEDIAN REMOVAL..... | 36 |
| REVISED 07/24/2008 | |

EMBANKMENT I 36

TEMPORARY PAVEMENT..... 37

WOOD FENCE TO BE REMOVED AND RE-ERECTED 38

CONSTRUCTION LAYOUT..... 38

DELINEATOR REMOVAL 38

COMBINATION CONCRETE CURB AND GUTTER, TYPE B-6.24 (SPECIAL)..... 38

RECLAIMED ASPHALT PAVEMENT (RAP) (DISTRICT ONE)..... 39

NON-SPECIAL WASTE WORKING CONDITIONS 44

MAILBOX REMOVAL AND RELOCATION 45

LANDSCAPING 46

GENERAL REQUIREMENTS FOR WEED CONTROL SPRAYING..... 46

WEED CONTROL, TEASEL (POUND) 48

COMPOST FURNISH AND PLACE 49

PLANTING WOODY PLANTS 50

WEED CONTROL, PRE-EMERGENT GRANULAR HERBICIDE..... 51

SELECTIVE CLEARING 52

DRAINAGE AND UTILITIES..... 53

PIPE UNDERDRAINS (SPECIAL)..... 53

STORM SEWERS, RUBBER GASKET..... 53

DRAINAGE STRUCTURE TO BE REMOVED..... 54

MANHOLES, TYPE A, 6' DIAMETER, TYPE 1 FRAME, CLOSED LID, RESTRICTOR PLATE..... 54

DOMESTIC WATER SERVICE BOXES TO BE ADJUSTED..... 54

DRAINAGE AND UTILITY STRUCTURES TO BE ADJUSTED 55

SANITARY MANHOLE REMOVAL AND REPLACEMENT..... 55

CLEANING EXISTING DRAINAGE STRUCTURES 57

CONCRETE HEADWALL REMOVAL OR FLARED END SECTION REMOVAL 58

PIPE CULVERT REMOVAL 58

PIPE UNDERDRAIN REMOVAL 58

STORM SEWER ADJACENT TO OR CROSSING WATER MAIN..... 58

SLOTTED DRAIN 59

WORK ZONE TRAFFIC CONTROL..... 60

TRAFFIC CONTROL PLAN..... 60

TRAFFIC CONTROL AND PROTECTION FOR TEMPORARY DETOUR..... 62

TEMPORARY INFORMATION SIGNING..... 62

KEEPING THE EXPRESSWAY OPEN TO TRAFFIC..... 63

REVISED 07/24/2008

FAILURE TO OPEN TRAFFIC LANES TO TRAFFIC 65

WORK ZONE TRAFFIC CONTROL (LUMP SUM PAYMENT)..... 66

TRAFFIC CONTROL AND PROTECTION (SPECIAL) 66

TRAFFIC CONTROL AND PROTECTION (EXPRESSWAYS)..... 68

TRAFFIC CONTROL FOR WORK ZONE AREAS 71

TRAFFIC CONTROL SURVEILLANCE (EXPRESSWAYS) 71

STAGING AND INTERCHANGE RESTRICTIONS 72

WORK RESTRICTIONS 72

PAVEMENT MARKING REMOVAL 74

TEMPORARY PAVEMENT MARKING..... 74

WET REFLECTIVE TEMPORARY TAPE, TYPE III 74

ROADWAY LIGHTING (IDOT) 75

GENERAL ELECTRICAL REQUIREMENTS 75

LIGHTING CONTROLLER, RADIO CONTROL, DUPLEX, CONSOLE TYPE 77

ELECTRIC CONNECTION TO SIGN STRUCTURE..... 81

GROUND ROD 82

JUNCTION BOX EMBEDDED IN STRUCTURE 83

UNDERPASS LUMINAIRE, HPS, STAINLESS STEEL HOUSING 84

MAINTENANCE OF LIGHTING SYSTEMS..... 96

MAINTENANCE OF EXISTING LIGHTING SYSTEMS..... 96

LUMINAIRE..... 99

LUMINAIRE SAFETY CABLE ASSEMBLY 106

FOUNDATIONS 106

EXPOSED RACEWAYS 107

UNDERGROUND RACEWAYS..... 109

ELECTRIC UTILITY SERVICE CONNECTION (COMED)..... 110

ELECTRIC SERVICE INSTALLATION..... 111

TRENCH AND BACKFILL FOR ELECTRICAL WORK 111

UNIT DUCT..... 112

WIRE AND CABLE 113

COILABLE NON-METALLIC CONDUIT 115

REMOVAL OF EXISTING HIGH MAST LIGHT TOWER, SALVAGE 117

ROADWAY LIGHTING (VILLAGE OF SHOREWOOD FOR IL59)..... 117

ELECTRIC UTILITY SERVICE CONNECTION..... 117

LIGHT POLE, COMPLETE IN PLACE , VILLAGE OF SHOREWOOD 118

REVISED 07/24/2008

LUMINAIRE, VILLAGE OF SHOREWOOD 118

FOUNDATION, 24" DIAMETER, OFFSET 124

FOUNDATION, 24" DIAMETER, SPECIAL 124

UNIT DUCT, 600V, 4/C #6 & 1/C #6 GND. (XLP TYPE-USE) IN 1 ¼" DIA. POLYETHYLENE 125

TRAFFIC SIGNAL SPECIFICATIONS..... 125

CALENDAR DAYS FOR TREE REMOVAL AND CLEARING 171

NORTHERN ILLINOIS GAS CO. INC. (PARCEL NUMBER 1DD0013-DED, 1DD0013TE-A AND 1DD0013-TE-B) ADDITIONAL INSURED PARTIES:..... 171

NATURAL GAS PIPELINE CO. OF AMERICA (PARCEL NUMBER 1DD0005-DED ADDITIONAL INSURED PARTIES:..... 171

CLEANING AND PAINTING NEW METAL STRUCTURES..... 172

DECK SLAB REPAIR..... 178

TEMPORARY SHEET PILING 184

MECHANICALLY STABILIZED EARTH RETAINING WALLS 185

TEMPORARY SOIL RETENTION SYSTEM 193

POROUS GRANULAR EMBANKMENT (SPECIAL) 194

DEMOLITION PLANS FOR REMOVAL OF EXISTING STRUCTURES..... 194

RUSTICATION FINISH..... 195

ALKALI-SILICA REACTION FOR CAST-IN-PLACE CONCRETE (BDE) 196

AUTOMATED FLAGGER ASSISTANCE DEVICES (BDE)..... 198

CEMENT (BDE) 200

DISADVANTAGED BUSINESS ENTERPRISE PARTICIPATION (BDE) 202

EPOXY PAVEMENT MARKINGS (BDE)..... 210

CONTRACTOR'S DAILY WORK SCHEDULE 210

FENCE TO BE REMOVED AND RE-ERECTED..... 210

EQUIPMENT RENTAL RATES (BDE)..... 212

EROSION AND SEDIMENT CONTROL DEFICIENCY DEDUCTION (BDE) 213

HMA - HAULING ON PARTIALLY COMPLETED FULL-DEPTH PAVEMENT (BDE) 213

HOT-MIX ASPHALT - FIELD VOIDS IN THE MINERAL AGGREGATE (BDE)..... 215

HOT-MIX ASPHALT – PLANT TEST FREQUENCY (BDE)..... 216

HOT-MIX ASPHALT – TRANSPORTATION (BDE) 217

IMPACT ATTENUATORS, TEMPORARY (BDE)..... 218

MULTILANE PAVEMENT PATCHING (BDE) 220

NOTCHED WEDGE LONGITUDINAL JOINT (BDE) 220

PAYMENTS TO SUBCONTRACTORS (BDE) 221

REVISED 07/24/2008

POLYUREA PAVEMENT MARKING (BDE) 222
PORTLAND CEMENT CONCRETE PLANTS (BDE) 229
REFLECTIVE SHEETING ON CHANNELIZING DEVICES (BDE) 230
REINFORCEMENT BARS (BDE) 230
REMOVAL AND DISPOSAL OF REGULATED SUBSTANCES (BDE) 232
RETROREFLECTIVE SHEETING, NONREFLECTIVE SHEETING, AND TRANSLUCENT OVERLAY
FILM FOR HIGHWAY SIGNS (BDE) 232
SEEDING (BDE) 238
SELF-CONSOLIDATING CONCRETE FOR CAST-IN-PLACE CONSTRUCTION (BDE) 239
SELF-CONSOLIDATING CONCRETE FOR PRECAST PRODUCTS (BDE)..... 243
SILT FILTER FENCE (BDE) 244
STEEL INSERTS AND BRACKETS CAST INTO CONCRETE (BDE) 244
STEEL PLATE BEAM GUARDRAIL (BDE) 245
STONE GRADATION TESTING (BDE)..... 245
SUBCONTRACTOR MOBILIZATION PAYMENTS (BDE) 245
SURFACE TESTING OF PAVEMENTS (BDE) 246
TEMPORARY EROSION CONTROL (BDE) 252
THERMOPLASTIC PAVEMENT MARKINGS (BDE) 252
TRAINING SPECIAL PROVISIONS 253
TYPE ZZ RETROREFLECTIVE SHEETING, NONREFLECTIVE SHEETING, AND TRANSLUCENT
OVERLAY FILM FOR HIGHWAY SIGNS (BDE) 256
UNINTERRUPTABLE POWER SUPPLY (UPS) (BDE) 260
VARIABLY SPACED TINING (BDE)..... 266
WATER BLASTER WITH VACUUM RECOVERY (BDE)..... 267
BITUMINOUS MATERIALS COST ADJUSTMENTS (BDE) (RETURN FORM WITH BID)..... 267
STEEL COST ADJUSTMENT (BDE) (RETURN FORM WITH BID) 270
STORM WATER POLLUTION PREVENTION PLAN..... 274
KINDER/MORGAN GUIDELINES 284
ENGINEER'S FIELD OFFICE TYPE A (BDE) 288
BUILDING REMOVAL – CASE II (NON-FRIABLE ASBESTOS ABATEMENT) (BDE) 290
REGULATED FLOODWAY CONSTRUCTION PERMIT 301
REVISED 07/24/2008

Revise subparagraph (k) of this Article to read:

k) Two plain paper fax machine including maintenance and supplies. Revise subparagraph (l) of this Article to read:

l) One electric water cooler dispenser including water service.

Add the following subparagraphs to this Article:

n) One 1.2m x 1.8m (4 ft x 6 ft) chalkboard or dry erase board.

670.05 Engineer's Field Laboratory. Revise the first paragraph of this Article to read:

Engineer's Field Laboratory (Special). The field laboratory shall have a ceiling height of not less than 2 m (7 ft) and a floor space of not less than 93 sq m (1000 sq ft). The laboratory shall be provided with sufficient heat, natural and artificial light and air conditioning. Sanitary facilities and an electronic security system as specified for Engineer's Field Office Type A (Special) shall also be included. Doors and windows shall be equipped with locks approved by the Engineer.

Revise subparagraph (a) of this Article to read:

a) Two desks with minimum working surface 1.1 m x 750 mm (42 in. x 30 in.) each and two non-folding chairs with upholstered seats and backs.

Add the following subparagraphs to this Article:

j) One equipment cabinet of minimum inside dimension of 1100 mm (44") high x 600 mm (24 in) wide x 750 mm (30 in) deep with lock. The walls shall be of steel with a 2 mm (3/32 in) minimum thickness with concealed hinges and enclosed lock constructed in such a manner as to prevent entry by force. The cabinet assembly shall be permanently attached to a structural element of the field office in a manner to prevent theft of the entire cabinet.

670.07 Basis of Payment. Revise the fourth sentence of the first paragraph of this Article to read:

The building or buildings fully equipped, will be paid for at the contract unit price per calendar month or fraction thereof for ENGINEER'S FIELD OFFICE, TYPE A (SPECIAL), or ENGINEER'S FIELD LABORATORY (SPECIAL).

STATUS OF UTILITIES TO BE ADJUSTED

Effective: January 30, 1987

Revised: July 1, 1994

Utilities companies involved in this project have provided the following estimated dates:

Revised 07/24/2008

| Name of Utility | Type | Location | Estimated Dates for Start and Completion of Relocation or Adjustments |
|----------------------|---|---|--|
| Kinder Morgan | 5 non-encased pipes will require casing or concrete protective slabs due to new roadway pavement, construction activities, and increased embankment and ground cover (36", 30", 36", 24", 36") | 5 non-encased pipes along proposed SB Ramp Station 7022+00 to Sta 7018+00 | Concrete slabs included in Contract 60363 Scope. Completion by October 15, 2008 |
| Kinder Morgan | 1 non-encased pipes will require casing or concrete protective slabs due to new roadway pavement, construction activities, and increased embankment and ground cover (36") | 1 non-encased pipe along SB Ramp near Sta 7010+66 | Concrete slabs included in Contract 60363 Scope. Completion by October 15, 2008 |
| Kinder Morgan | 2 non-encased pipes will require casing or concrete protective slabs due to new roadway pavement, construction activities, and increased embankment and ground cover (36") | 1 non-encased pipe along NB Ramp near Sta 8026+24 and 1 non-encased pipe along NB Ramp near Sta. 8017+50. | Encasements to be completed by Kinder Morgan. Estimated Start of Work August 1, 2008, Estimated Completion by October 15, 2008 |
| Kinder Morgan | 5 non-encased pipes may require casing or concrete protective slabs due to new roadway pavement, construction activities, and added embankment. Minimum 3' of ground cover is maintained for final ditch cuts. (36", 30", 36", 24", 36"). | 5 non-encased pipes along EFR Station 6521+00 to Sta 6524+00 | Concrete slabs included in Contract 60363 Scope. Completion by October 15, 2008 |
| Kinder Morgan | 1 existing pipe partially encased under a roadway to be widened may require protective slab or encasing. Also proposed crossing of storm sewer will be within ~2' vertical clearance of existing pipe (20") | IL59 Sta 7490+44 | Encasements to be completed by Kinder Morgan. Estimated Completion by October 15, 2008 |
| Kinder Morgan | 2 existing pipes partially encased under a roadway to be widened may require protective slab or encasing. Storm sewer will cross w/ approx 2' clearance (40", 42") | IL59 Sta 7496+00 and 7496+32 | Encasements to be completed by Kinder Morgan. Estimated Completion by October 15, 2008 |
| AT&T | Underground telephone utility to be relocated to new EFR ROW due to access control requirements for proposed NB Ramp | EFR Approx Station 6015+00 to Station 6040+00 | Estimated Start of Work August 1, 2008, Estimated Completion by October 31, 2008 |

Revised 07/24/2008

| | | | |
|-----------------|--|--|--|
| AT&T | If underground telephone utility was not relocated in WFR Contract 60B97, then it must be relocated now to new WFR ROW due to access control requirements for proposed NB and SB Ramps | WFR Approx Station 5007+00 to Station 5051+00 and to the west of proposed IL59 roadway | Completion by October 31, 2008 (if applicable) |
| AT&T | Existing telephone line along south side of Seil will be under new pavement, and also under ~20' of new embankment. | Seil Road approximately Sta 4015+00 to Sta 4020+00 | Estimated Start of Work August 1, 2008, Estimated Completion by October 31, 2008 |
| AT&T | Existing Underground Controlled Environmental Vault (CEV) will be salvaged by AT&T due to construction of retaining wall along Seil Road. Per AT&T, the conduits leading from this CEV and adjacent SAI will be rerouted to the west along Seil Road. This utility will not cross the retaining wall and will not require a sleeve per AT&T 2/25/08. | South side of Seil Road approximately Station 4015+00 | Estimated Start of Work August 1, 2008, Estimated Completion by October 31, 2008 |
| AT&T | Existing telephone line along north side of Seil Road will have potential conflict with proposed storm sewers, headwalls and a proposed box culvert at Station 4016+75. In addition, Seil Road near Station 4011+00 and to the east will raise in profile ~20' for new intersection with IL59. | Seil Road north side approximately Sta 4002+50 to 4020+00. | Estimated Start of Work August 1, 2008, Estimated Completion by October 31, 2008 |
| AT&T | Existing telephone line will be within proposed access control. Relocation is required. | Approximately Sta 2975+00 to 2981+00 along west edge of existing IL59 | Estimated Start of Work August 1, 2008, Estimated Completion by October 31, 2008 |
| AT&T | Existing telephone line will cross under new pavement and embankment, and potential conflict with lateral IL59 storm sewers between 7484+50 and 7488+00 | Approximately Sta 2981+00 to Sta 2988+00 along west edge of IL59 | Estimated Start of Work August 1, 2008, Estimated Completion by October 31, 2008 |
| AT&T | Existing telephone line will be under proposed curb and gutter and pavement, and will be in potential conflict with multiple proposed drainage structures. | Approximately Sta 2987+00 to Sta 3019+76 along west edge of IL59 | Estimated Start of Work August 1, 2008, Estimated Completion by October 31, 2008 |
| AT&T | Existing telephone line likely in conflict with proposed box culvert | Approximately Sta 2999+81 along west edge of IL59 | Estimated Start of Work August 1, 2008, Estimated Completion by October 31, 2008 |

Revised 07/24/2008

| | | | |
|-------------------|--|--|--|
| AT&T | Existing telephone line in conflict with proposed box culvert 2998+26 and 2991+81, and potentially in conflict with proposed main drain. Also under proposed pavement near station 3002+80. | Approximately Sta 2998+00 to 3002+80 along east edge of IL59 | Estimated Start of Work August 1, 2008, Estimated Completion by October 31, 2008 |
| AT&T | Existing telephone line will be under proposed IL59 pavement and subgrade, and potential conflict with multiple proposed closed drainage system locations | Approximately Sta 3009+62 to 3020+00 along east edge of IL59 | Estimated Start of Work August 1, 2008, Estimated Completion by October 31, 2008 |
| Fiberoptic | Underground fiberoptic utility to be relocated to new EFR ROW due to access control requirements for proposed NB Ramp | EFR Approx Station 6015+00 to Station 6040+00 | Estimated Start of Work August 1, 2008, Estimated Completion by October 31, 2008 |
| Fiberoptic | If underground fiberoptic utility was not relocated in WFR Contract 60B97, then it must be relocated now to new WFR ROW due to access control requirements for proposed NB and SB Ramps | WFR Approx Station 5007+00 to Station 5051+00 and to the west of proposed IL59 roadway | Completion by October 31, 2008 (If applicable) |
| NICOR | If underground gas utility was not relocated in WFR Contract 60B97, then it must be relocated now to new WFR ROW due to access control requirements for proposed NB and SB Ramps | WFR Approx Station 5007+00 to Station 5051+00 and to the west of proposed IL59 roadway | Completion by October 31, 2008 (If applicable) |
| NICOR | Existing gas line along south edge of roadway will be covered by new widened and raised pavement. Potential conflict with culvert headwall at Station 4005+60, lateral storm sewer at 4008+35, 4011+07, 4011+81, 4012+62, and box culvert at 4016+75 | Seil Road approx Sta 4050+60 to Station 4016+75 | Estimated Start of Work August 1, 2008, Estimated Completion by October 31, 2008 |
| NICOR | Near Sta 4011+00 and to the east, Seil will raise profile ~20 for new intersection with IL59. Access to telephone line will be impacted under new embankment. | Seil Road approx Sta 4011+00 to 4020+00 | Estimated Start of Work August 1, 2008, Estimated Completion by October 31, 2008 |
| NICOR | Existing gas line will be within proposed access control. Relocation is required. | Approximately Sta 2975+00 to 2981+00 along west edge of existing IL59 | Estimated Start of Work August 1, 2008, Estimated Completion by October 31, 2008 |
| NICOR | Existing gas line will cross under new pavement and embankment, and potential conflict with lateral IL59 storm sewers between 7484+50 and 7488+00 | Approximately Sta 2981+00 to Sta 2988+00 along west edge of IL59 | Estimated Start of Work August 1, 2008, Estimated Completion by October 31, 2008 |

Revised 07/24/2008

| | | | |
|---------------|--|--|--|
| NICOR | Multiple potential conflicts with proposed roadway subgrade, drainage structures, pipes and headwalls. Depth checks on gas lines required. | Existing west side of IL59 from 2987+00 to 3020+00 | Estimated Start of Work August 1, 2008, Estimated Completion by October 31, 2008 |
| NICOR | Potential conflict with proposed storm sewer and box culvert | IL59 along east side 2998+85 | Estimated Start of Work August 1, 2008, Estimated Completion by October 31, 2008 |
| NICOR | Potential conflict with proposed storm sewer | IL59 along east side 3015+46 | Estimated Start of Work August 1, 2008, Estimated Completion by October 31, 2008 |
| NICOR | Potential conflict with proposed junction chamber | IL59 along east side 3019+90 | Estimated Start of Work August 1, 2008, Estimated Completion by October 31, 2008 |
| NICOR | Potential conflict with proposed maindrain | IL59 along east side 3020+53 | Estimated Start of Work August 1, 2008, Estimated Completion by October 31, 2008 |
| Com Ed | If these power poles were not relocated in WFR Contract 60B97, then it must be relocated now to new WFR ROW due to access control requirements for proposed NB and SB Ramps | WFR Approx Station 5007+00 to Station 5051+00 and to the west of proposed IL59 roadway | Completion by October 31, 2008 (If applicable) |
| Com Ed | Potential conflict with existing underground electric line and proposed culvert/headwalls | Seil Station 4003+92 north edge | Estimated Start of Work August 1, 2008, Estimated Completion by October 31, 2008 |
| Com Ed | Existing light/powerpoles along Seil Road will conflict with new widened pavement. Also near Sta 4011+00 to the east, Seil will raise profile ~20' for new intersection with IL59. | Seil Road north and south edges of roadway between approx Sta. 4005+00 to Sta. 4020+00 | Estimated Start of Work August 1, 2008, Estimated Completion by October 31, 2008 |
| Com Ed | Existing power poles and line will be within proposed access control. Removal or relocation required. | Approximately Sta 2975+00 to 2981+00 along west edge of existing IL59 | Estimated Start of Work August 1, 2008, Estimated Completion by October 31, 2008 |
| Com Ed | Existing power poles and line will cross over new pavement | Approximately Sta 2981+00 to Sta 2987+00 along west edge of IL59 | Estimated Start of Work August 1, 2008, Estimated Completion by October 31, 2008 |

Revised 07/24/2008

| | | | |
|-----------------------------|---|--|--|
| Com Ed | Multiple light/power poles in conflict with proposed pavement. | IL59 along east side between STA. 7487+51 RT to 7513+59 RT | Estimated Start of Work August 1, 2008, Estimated Completion by October 31, 2008 |
| Com Ed | Existing underground utility potential conflict with proposed drainage structures and pipe. Power pole to be removed. | IL59 STA 7503+57 RT | Estimated Start of Work August 1, 2008, Estimated Completion by October 31, 2008 |
| Com Ed | Existing underground utility potential conflict with proposed drainage structures and pipe. Power pole to be removed. | IL59 STA 7509+42 to STA 7510+46 | Estimated Start of Work August 1, 2008, Estimated Completion by October 31, 2008 |
| Village of Shorewood | Sanitary Force Main at Seil Road Station 4016+75 conflicts with proposed box culvert. Village (CBBEL) has indicated intention to relocate portion of this force main. | Seil Station 4016+75 | Estimated Start of Work August 1, 2008, Estimated Completion by October 31, 2008 |
| Village of Shorewood | Near Sta 4011+00 and to the east, Seil will raise profile ~20' for new intersection with IL59. Village (CBBEL) has indicated study to encase existing force main. | Seil Road Station 4011+00 and east | Estimated Start of Work August 1, 2008, Estimated Completion by October 31, 2008 |
| Village of Shorewood | Existing Sanitary Force Main along WFR Sta 5045+00 crosses I-55, however, due to proposed full access control for the NB/SB Ramps, this area is no longer accessible. Village (CBBEL) is reviewing relocation options. Relocation is an option. Final resolution to be determined. | WFR Station 5045+00 | Estimated Start of Work August 1, 2008, Estimated Completion by October 31, 2008 |
| Village of Shorewood | Sanitary Sewer along IL59 east side between Sta 7498+00 to Sta. 7516+00 contains multiple conflicts with new pavement, proposed sewers, culverts, headwalls. Village (CBBEL) has indicated intention to relocate portions of existing sanitary sewer along IL59 between 7498+00 to 7516+00. | IL59 east side Sta 7498+00 to Sta 7516+00 | Estimated Start of Work August 1, 2008, Estimated Completion by October 15, 2008 |
| Village of Shorewood | Future IL59 Sanitary Sewer must cross proposed main drain along east edge of proposed IL59. Village to install crossing structure to accommodate storm sewer. | IL59 7513+42 | Estimated Start of Work August 1, 2008, Estimated Completion by October 15, 2008 |
| Village of Shorewood | Existing water main crossing IL59 potential conflict with proposed storm sewer. Village (CBBEL) has indicated intention to abandon portions of existing water main between 3010+09 to 3015+15. | IL59 Station 3011+09 | Estimated Start of Work August 1, 2008, Estimated Completion by October 15, 2008 |

Revised 07/24/2008

| | | | |
|-----------------------------|---|--|--|
| Village of Shorewood | Existing water main will be under proposed pavement and will cross under multiple proposed storm sewers. Village (CBBEL) has indicated intention to abandon portions of existing water main between 3010+09 to 3015+15. | Along IL59 east side from approximately 3010+09 to 3015+15 | Estimated Start of Work August 1, 2008, Estimated Completion by October 15, 2008 |
|-----------------------------|---|--|--|

The above represents the best information available to the Department and is included for the convenience of the bidder. The applicable portions of Articles 105.07 and 107.31 of the Standard Specifications shall apply.

Utility Contact Information:

| | | |
|---|--|---|
| Com Ed Anthony Cox/ Rober Kniskern 1910 S. Briggs Joliet, IL 60433 | Comcast Cable Tom Munar Right of Way Engineer 688 Industrial Drive Elmhurst, IL 60126 630-600-6316 | NICOR Utility Conflicts Connie Lane Utility Consultant 1844 W. Ferry Road Naperville, IL 60563 |
| Kinder Morgan/ NGPL Bob Jones/ Craig Howard 815-272-9110 | Kinder Morgan/ NGPL Greg Smith Project Engineer 370 Van Gordon Street Lakewood, CO 80228 303-914-7848 | NICOR Local Facility (Shorewood) Todd Hammer Area Manager Facility Services 1844 Ferry Road Naperville, IL 60563 630-983-8676 ext. 2567 |
| AT&T Robert Hodorowicz 815-727-8299 | AT&T Mike Carney 1000 Commerce Drive Oak Brook, IL 60523 630-573-6456 | Water Main / Sanitary Lines Roger Barrowman Superintendent of Public Works Village of Shorewood 903 West Jefferson Shorewood, IL 60431 815-725-2150 ext 23 Notify: 48 hours prior to any Water Main or Sanitary Work VOS Representative to be present for any Water Main or Sanitary Work |

Revised 07/24/2008

PROGRESS SCHEDULE

Description. This work shall consist of preparing, revising and updating a detailed progress schedule based upon the Critical Path Method (CPM). This work shall also consist of performing time impact analysis of the progress schedule based upon the various revisions and updates as they occur.

Requirements. The software shall produce an electronic progress schedule for submission to the department that is 100% compatible with Primavera SureTrak 3.0 Project Manager, published by Primavera Systems, Inc.

Format. The electronic schedule format shall contain the following:

Project Name: (Optional).

Template: Construction.

Type: SureTrak: Native file format for stand-alone contracts.

Planning Unit: Days (calendar working).

Number/Version: Original or updated number.

Start Date: Not later than ten days after execution of the contract.

Must Finish Date: Completion date for completion date contracts.

Project Title: Contract number.

Company Name: Contractor's name.

Calendars.

Completion Date Contracts. The base calendar shall show the proposed working days of the week and the proposed number of work hours per day.

Working Days Contracts. The base calendar shall show the distribution of working days according to the following table:

REINFORCEMENT BARS - STORAGE AND PROTECTION (BDE)

Effective: August 1, 2008

Revise Article 508.03 of the Standard Specifications to read:

“508.03 Storage and Protection. Reinforcement bars, when delivered on the job, shall be stored off the ground using platforms, skids, or other supports; and shall be protected from mechanical injury and from deterioration by exposure. Epoxy coated bars shall be stored on wooden or padded steel cribbing and all systems for handling shall have padded contact areas. The bars or bundles shall not be dragged or dropped.

When it is necessary to store epoxy coated bars outside for more than two months, they shall be protected from sunlight, salt spray, and weather exposure. The protection shall consist of covering with opaque polyethylene sheeting or other suitable opaque material. The covering shall be secured and allow for air circulation around the bars to minimize condensation under the cover.

When placed in the work the bars shall be free from dirt, detrimental scale, paint, oil, or other foreign substances. A light coating of rust will not be considered objectionable on black bars.”

Revised 07/24/2008

WORK ZONE TRAFFIC CONTROL (LUMP SUM PAYMENT)

Effective: February 1, 1996

Revised: January 1, 2007

Specific traffic control plan details and Special Provisions have been prepared for this contract. This work shall include all labor, materials, transportation, handling and incidental work necessary to furnish, install, maintain and remove all traffic control devices required as indicated in the plans and as approved by the Engineer.

Method of Measurement: All traffic control (except traffic control pavement marking) indicated on the traffic control plan details and specified in the Special Provisions will be measured for payment on a lump sum basis. Traffic control pavement markings will be measured per foot (meter).

Basis of Payment: All traffic control and protection will be paid for at the contract lump sum price for TRAFFIC CONTROL AND PROTECTION (SPECIAL).

SHORT TERM PAVEMENT MARKING, TEMPORARY PAVEMENT MARKING and WET REFLECTIVE TEMPORARY TAPE, TYPE III will be paid for separately.

TRAFFIC CONTROL AND PROTECTION (SPECIAL)

This special provision applies to traffic control and protection on the non interstate routes, arterials and frontage roads outside the limits of the mainline and ramps of I-55 (Interstate 55).

Traffic Control shall be in accordance with the applicable sections of the Standard Specifications, the Supplemental Specifications, the "Illinois Manual on Uniform Traffic Control Devices for Streets and Highways", and any special details and Highway Standards contained in the plans, the Traffic Specifications and the Special Provisions contained herein.

Special attention is called to Article 107.09 of the Standard Specifications and the following Highway Standards, Details and Recurring Special Provisions contained herein, relating to traffic control and protection on the arterials, cross streets and frontage roads outside the limits of the mainline and ramps of I-55 (Interstate 55).

The Contractor shall contact the District Bureau of Traffic at least 72 hours in advance of beginning work.

STANDARDS

| | |
|--------|--|
| 701001 | OFF-ROAD OPERATIONS, 2L, 2W, MORE THAN 4.5 M (15') AWAY |
| 701006 | OFF-ROAD OPERATIONS, 2L, 2W, 4.5 M (15') TO 600 MM (24") FROM PAVEMENT EDGE |
| 701011 | OFF-ROAD MOVING OPERATIONS, 2L, 2W, DAY ONLY |
| 701101 | OFF-ROAD OPERATIONS, MULTILANE, 4.5 M (15') TO 600 MM (24") FROM PAVEMENT EDGE |
| 701201 | LANE CLOSURE, 2L, 2W, DAY ONLY, FOR SPEEDS >= 45 MPH |
| 701301 | LANE CLOSURE, 2L, 2W, SHORT TIME OPERATIONS |
| 701306 | LANE CLOSURE, 2L, 2W, SLOW MOVING OPERATIONS DAY ONLY, FOR SPEEDS >= 45 MPH |
| 701326 | LANE CLOSURE, 2L, 2W, PAVEMENT WIDENING, FOR SPEEDS >= 45 MPH |
| 701331 | LANE CLOSURE, 2L, 2W, WITH RUN-AROUND, FOR SPEEDS >= 45 MPH |
| 701421 | LANE CLOSURE, MULTILANE, DAY OPERATIONS ONLY, FOR SPEEDS >= 45 MPH TO 55 MPH |

Revised 07/24/2008

| | |
|--------|--|
| 701422 | LANE CLOSURE, MULTILANE, FOR SPEEDS >= 45 MPH TO 55 MPH |
| 701501 | URBAN LANE CLOSURE, 2L, 2W, UNDIVIDED |
| 701606 | URBAN LANE CLOSURE, MULTILANE, 2W WITH MOUNTABLE MEDIAN |
| 701701 | URBAN LANE CLOSURE, MULTILANE INTERSECTION |
| 701801 | LANE CLOSURE, MULTILANE 1W OR 2W CROSSWALK OR SIDEWALK CLOSURE |
| 701901 | TRAFFIC CONTROL DEVICES |
| 704001 | TEMPORARY CONCRETE BARRIER |
| 780001 | TYPICAL PAVEMENT MARKINGS |

DETAILS

| | |
|------|--|
| TC10 | TRAFFIC CONTROL AND PROTECTION FOR SIDE ROADS, INTERSECTIONS AND DRIVEWAYS |
| TC11 | RAISED REFLECTIVE PAVEMENT MARKERS |
| TC13 | DISTRICT ONE TYPICAL PAVEMENT MARKINGS |
| TC14 | TRAFFIC CONTROL AND PROTECTION AT TURN BAYS (TO REMAIN OPEN TO TRAFFIC) |
| TC16 | PAVEMENT MARKING LETTERS AND SYMBOLS FOR TRAFFIC STAGING |
| TC22 | ARTERIAL ROAD INFORMATION SIGN |

Non-Interstate Lane Closures: All traffic control on arterials, cross-streets or side-streets will be subject to the approval of the Department. A Traffic Control Plan developed by the Contractor will need to be approved in writing by the Department at least forty-eight (48) hours in advance of commencing with the work. All lane closures shall be in accordance with the requirements of the Department, traffic control Special Provisions, the details as shown in the plans and as directed by the Engineer. The traffic control shall be done in a manner which will minimize the amount of disruption of traffic and all lanes shall remain open to traffic except where the need for a closure is specifically required to accomplish the work. The Contractor will be responsible for the maintenance of the Traffic Control per the approved traffic control plan and as directed by the Engineer. In no case will the Contractor be allowed to work on the opposite sides of the street at the same time. One side of the street must remain open for pedestrian traffic at all times.

Permanent or night-time closures will not be allowed on the 2-lane, 2-way non-interstate routes, arterials or frontage roads, which include IL Route 59, Seil Road and the East and West Frontage Roads. When IL Route 59 is widened to a 4-lane, 2-way roadway, single lane closures will be allowable as shown in the plans and as directed by the Engineer.

Lane closures will not be allowed on the 2-lane, 2 way non-interstate routes, arterials or frontage roads, which include IL Route 59, Seil Road and the East and West Frontage Roads between the dates of November 30 and April 1.

Method of Measurement: All traffic control for the non interstate routes, arterials and frontage roads of I-55 (Interstate 55), except for temporary concrete barrier wall, temporary pavement markings and temporary reflectors, will be measured for payment on a lump sum basis. The traffic control shall be performed as indicated on the Maintenance of Traffic plans and details, and as described and specified herein

Basis of Payment: This work will be paid for at the contract lump sum price for TRAFFIC CONTROL AND PROTECTION (SPECIAL) regardless of the number of applications, which price shall be payment in full to complete the work as specified herein, as shown on the plans, and as directed by the Engineer.

Revised 07/24/2008

The lump sum price for TRAFFIC CONTROL AND PROTECTION (SPECIAL) shall include the cost to apply these standards to complete construction operations at various stages of construction. Applications of Traffic Control and Protection Standards at various stages of construction will not be measured for payment. Application of Standards listed in this Special Provision and as shown in the plans, shall be included in the cost of the contract, and no additional compensation will be allowed. No additional compensation will be allowed for multiple applications of Traffic Control and Protection Standards.

TRAFFIC CONTROL AND PROTECTION (EXPRESSWAYS) will be paid for separately.
PAVEMENT MARKING and TEMPORARY PAVEMENT MARKING shall be paid for separately.
TEMPORARY CONCRETE BARRIER shall be paid for separately.
TEMPORARY RAISED REFLECTIVE PAVEMENT MARKERS, REPLACEMENT REFLECTORS, and BARRIER REFLECTORS shall be paid for separately.

TRAFFIC CONTROL AND PROTECTION (EXPRESSWAYS)

Effective: 3/8/96

Revised: 1/1/07

This work shall include furnishing, installing, maintaining, replacing, relocating, and removing all traffic control devices used for the purpose of regulating, warning, or directing traffic. Traffic control and protection shall be provided as called for in the plans, applicable Highway Standards, District One Expressway details, Standards and Supplemental Specifications, these Special Provisions, or as directed by the Engineer.

General.

The governing factor in the execution and staging of work for this project is to provide the motoring public with the safest possible travel conditions on the expressway through the construction zone. The Contractor shall arrange his operations to keep the closing of lanes and/or ramps to a minimum.

The Contractor shall be responsible for the proper location, installation, and arrangement of all traffic control devices. Special attention shall be given to existing warning signs and overhead guide signs during all construction operations. Warning signs and existing guide signs with down arrows shall be kept consistent with the barricade placement at all times. The Contractor shall immediately remove, completely cover, or turn from the motorist's view all signs which are inconsistent with lane assignment patterns.

The Contractor shall coordinate all traffic control work on this project with adjoining or overlapping projects, including barricade placement necessary to provide a uniform traffic detour pattern. When directed by the Engineer, the Contractor shall remove all traffic control devices that were furnished, installed, or maintained by him under this contract, and such devices shall remain the property of the Contractor. All traffic control devices shall remain in place until specific authorization for relocation or removal is received from the Engineer.

Signs.

Prior to the beginning of construction operations, the Contractor will be provided a sign log of all existing signs within the limits of the construction zone. The Contractor is responsible for verifying the accuracy of the sign log. Throughout the duration of this project, all existing traffic

Revised 07/24/2008

improving, correcting or modifying traffic control, installations or devices, including pavement markings. The Contractor shall dispatch additional men, materials and equipment as necessary to begin to correct, improve or modify the traffic control as directed, within one hour of notification by this surveillance person or by the Department. Upon completion of such corrections and/or revisions, the Contractor shall notify the Department's Communication Center at (847) 705-4612.

Method of Measurement.

Traffic Control Surveillance will be measured on calendar day basis. One calendar day is equal to a minimum of six (6) inspections. The inspections shall start within 4 hours after the lane is closed to traffic or a hazard exists within 10 foot from the edge of pavement and shall end when the lane closure or hazard is removed.

Basis of Payment.

Surveillance will be paid for at the contract unit price per calendar day or fraction thereof for TRAFFIC CONTROL SURVEILLANCE (EXPRESSWAYS). The price shall include all labor and equipment necessary to provide the required inspection and maintenance on the expressway and on all cross streets which are included in the project. The cost of the materials for the maintenance of traffic control devices shall be included in the traffic control pay items.

STAGING AND INTERCHANGE RESTRICTIONS

Coordination with adjacent Contracts will be required for the Contractor to develop and maintain project schedule. The adjacent contracts will be Contract 62895 (I-55 Widening and Resurfacing) and Contract 62416 (IL Route 59 –US 52 to Caton Farm Road).

Any and all stage and/or phase changes shall be coordinated between the Contractors of adjacent Contracts for the different projects so that the appropriate number of lanes and safe transitions are maintained in each direction on all roadways between Contracts.

WORK RESTRICTIONS

The Contractor shall be subject to the following work restrictions:

- Permanent or night-time closures will not be allowed IL Route 59 during Year 1 (2008) of construction. During Year 1 of construction, only temporary lane closures will be allowed on IL Route 59 for temporary pavement construction.
- IL Route 59 Side Street Closures will be allowed for reconstruction for a period of up to 14 consecutive days subject to the following restrictions:
 - Of the following side streets, no two (2) consecutive (adjacent) streets can be closed concurrently: Shorewood Lane, Meyers Street, Trout Street, Bass Street, Sarah Street, School Street, and Channahon Street
 - Amendodge Drive and Oakwood Drive must remain open to thru traffic at all times.

Revised 07/24/2008

- Clark Drive and Riffles Street shall be closed to thru traffic permanently in the Pre-Stage.
- The Contractor shall notify the Engineer a minimum of 2 weeks in advance of any IL Route 59 side street closures.
- A maximum of 25 working days will be allowed for the Stage 2 closure of Seil Road with Detour.
- The Contractor shall complete the temporary runaround pavement from Station 1011+15 to Station 1015+67 no earlier than 1 week prior to the start of Stage 3A.
- A maximum of 15 working days will be allowed to complete Stages 3A and 3B respectively.
- The existing NB and SB I-55 ramps shall not be permanently closed and taken out of service until the respective proposed ramp is completed and in service. Temporary ramp closures will be allowed by the Special Provision for KEEPING THE EXPRESSWAY OPEN TO TRAFFIC.
- The Contractor will be required to contact the Chicagoland Speedway and Route 66 Raceway, as listed below, to coordinate any lane closures along I-55 with the events that are scheduled at the speedway. The contact information is:

Mr. Ken Kohrs
Director of Operations
Chicagoland Speedway
500 Speedway Boulevard
Joliet, IL 60433
(815) 722-3093

- Lane or ramp closures will not be allowed on I-55 during the dates listed below for these activities at the Chicagoland Speedway and Route 66 Raceway (Restrictions shall begin at 12:01 AM on Friday and end at 11:59 PM the following Monday):

2008:

- September 6-7 (INDY Event)
- June 5-8 (NHRA Event)

2009:

- Dates to be requested by Contractor and coordinated with the Engineer

2010:

- Dates to be requested by Contractor and coordinated with the Engineer

Should the Contractor fail to completely open, and keep open, the ramps to traffic in accordance with the above limitations; the Contractor shall be liable to the Department for liquidated damages as noted under the Special Provision, "Failure to Open Traffic Lanes to Traffic."

Revised 07/24/2008

EPOXY PAVEMENT MARKINGS (BDE)

Effective: January 1, 2007

Revise Article 1095.04(a) of the Standard Specifications to read:

CONTRACTOR'S DAILY WORK SCHEDULE

Description:

The Contractor shall submit a daily work schedule to the Resident Engineer for the purpose of coordinating the Contractor's activities for the next working day. The daily schedule must be submitted by 3:00 pm the day before. This schedule is necessary for the Engineer to schedule inspection, testing and layout checking for the following day.

The schedule shall include the location and type of all work to be performed that day and all material deliveries. It shall identify all concrete pours, the concrete mix design numbers, and estimated number of cubic yards. The placement of bituminous materials shall be identified, including the mix design numbers, location and number of estimated tons to be placed. The Contractor shall identify all locations where survey verification is required and shall give sufficient advance notification to the Engineer so as not to cause delay.

Method of Measurement:

This coordination work will not be measured for payment.

Basis of Payment:

Preparation and submittal of the Contractor's Daily Work Schedule shall not be paid for separately, but shall be included in the cost of the contract items of work.

FENCE TO BE REMOVED AND RE-ERECTED

Description: This item shall include all materials, labor, and equipment necessary to remove the existing fence as directed by the Engineer, and store the fence, and subsequently re-erect the fence to existing or proposed location per the contract plans and to the satisfaction of the Engineer.

The Contractor shall photograph the existing fence before removal as documentation of the existing condition prior to re-erection. Any damage to, or loss of, the existing fence shall be repaired or replaced by the Contractor to the satisfaction of the Engineer.

Method of Measurement: FENCE TO BE REMOVED AND RE-ERECTED will be measured for payment in place, in feet.

Basis of Payment: This work will be paid for at the contract unit price per foot for FENCE TO BE REMOVED AND RE-ERECTED (OF THE TYPE SPECIFIED)

Revised 07/24/2008

ENGINEER'S FIELD OFFICE TYPE A (BDE)

Effective: April 1, 2007

Revised: August 1, 2008

Revise Article 670.02 of the Standard Specifications to read:

“670.02 Engineer's Field Office Type A. Type A field offices shall have a minimum ceiling height of 7 ft (2 m) and a minimum floor space 450 sq ft (42 sq m). The office shall be provided with sufficient heat, natural and artificial light, and air conditioning.

The office shall have an electronic security system that will respond to any breach of exterior doors and windows. Doors and windows shall be equipped with locks. Doors shall also be equipped with dead bolt locks or other secondary locking device.

Windows shall be equipped with exterior screens to allow adequate ventilation. All windows shall be equipped with interior shades, curtains, or blinds. Adequate all-weather parking space shall be available to accommodate a minimum of ten vehicles.

Suitable on-site sanitary facilities meeting Federal, State, and local health department requirements shall be provided, maintained clean and in good working condition, and shall be stocked with lavatory and sanitary supplies at all times.

Sanitary facilities shall include hot and cold potable running water, lavatory and toilet as an integral part of the office where available. Solid waste disposal consisting of two waste baskets and an outside trash container of sufficient size to accommodate a weekly provided pick-up service.

In addition, the following furniture and equipment shall be furnished.

- (a) Four desks with minimum working surface 42 x 30 in. (1.1 m x 750 mm) each and five non-folding chairs with upholstered seats and backs.
- (b) One desk with minimum working surface 48 x 72 in. (1.2 x 1.8 m) with height adjustment of 23 to 30 in. (585 to 750 mm).
- (c) One four-post drafting table with minimum top size of 37 1/2 x 48 in. (950 mm x 1.2 m). The top shall be basswood or equivalent and capable of being tilted through an angle of 50 degrees. An adjustable height drafting stool with upholstered seat and back shall also be provided.
- (d) Two free standing four drawer legal size file cabinet with lock and an underwriters' laboratories insulated file device 350 degrees one hour rating.
- (e) One 6 ft (1.8 m) folding table with six folding chairs.
- (f) One equipment cabinet of minimum inside dimension of 44 in. (1100 mm) high x 24 in. (600 mm) wide x 30 in. (750 mm) deep with lock. The walls shall be of steel with a 3/32 in. (2 mm) minimum thickness with concealed hinges and enclosed lock constructed in such a manner as to prevent entry by force. The cabinet assembly shall be permanently attached to a structural element of the field office in a manner to prevent theft of the entire cabinet.
- (g) One refrigerator with a minimum size of 16 cu ft (0.45 cu m) with a freezer unit.
- (h) One electric desk type tape printing calculator.
- (i) A minimum of two communication paths. The configuration shall include:
 - (1) Internet Connection. An internet service connection using telephone DSL, cable broadband, or CDMA wireless technology. Additionally, an 802.11g/N wireless router shall be provided, which will allow connection by the Engineer and up to four Department staff.
 - (2) Telephone Lines. Three separate telephone lines.

Added 07/24/2008

- (j) One plain paper copy machine capable of reproducing prints up to 11 x 17 in. (280 x 432 mm) with an automatic feed tray capable of storing 30 sheets of paper. Letter size and 11 x 17 in. (280 x 432 mm) paper shall be provided.
- (k) One plain paper fax machine with paper.
- (l) Two telephones, with touch tone, where available, and a digital telephone answering machine, for exclusive use by the Engineer.
- (m) One electric water cooler dispenser.
- (n) One first-aid cabinet fully equipped.
- (o) One microwave oven, 1 cu ft (0.03 cu m) minimum capacity.
- (p) One fire-proof safe, 0.5 cu ft (0.01 cu m) minimum capacity.
- (q) One electric paper shredder.
- (r) One post mounted rain gauge, located on the project site for each 5 miles (8 km) of project length."

Revise the first sentence of the first paragraph of Article 670.07 of the Standard Specifications to read:

"The building or buildings fully equipped as specified will be paid for on a monthly basis until the building or buildings are released by the Engineer."

Revise the last sentence of the first paragraph of Article 670.07 of the Standard Specifications to read:

"This price shall include all utility costs and shall reflect the salvage value of the building or buildings, equipment, and furniture which become the property of the Contractor after release by the Engineer, except that the Department will pay that portion of the monthly long distance telephone bills that, when combined, exceed \$150."

Added 07/24/2008

BUILDING REMOVAL – CASE II (NON-FRIABLE ASBESTOS ABATEMENT) (BDE)

BUILDING REMOVAL - CASE II (NON-FRIABLE ASBESTOS ABATEMENT) (BDE)

Effective: September 1, 1990
 Revised: January 1, 2007

BUILDING REMOVAL: This work shall consist of the removal and disposal of 1 building(s), together with all foundations, retaining walls, and piers, down to a plane 1 ft (300 mm) below the ultimate or existing grade in the area and also all incidental and collateral work necessary to complete the removal of the building(s) in a manner approved by the Engineer. Any holes, such as basements, shall be filled with a suitable granular material. The building(s) are identified as follows:

| <u>Bldg. No.</u> | <u>Parcel No.</u> | <u>Location</u> | <u>Description</u> |
|------------------|-------------------|--|------------------------------------|
| 1 | 1DD0017 | 24110 W. SEIL RD. SHOREWOOD, IL 60404 | 1 STORY FRAME WITH METAL GARAGE |

Discontinuance of Utilities: The Contractor shall arrange for the discontinuance of all utility services that serve the building(s) according to the respective requirements and regulations of the City, County, or utility companies involved. The Contractor shall disconnect and seal, in an approved manner, all service outlets that serve any building(s) he/she is to remove.

Signs: Immediately upon execution of the contract and prior to the wrecking of any structures, the Contractor shall be required to paint or stencil, in contrasting colors of an oil base paint, on all four sides of each residence and two opposite sides of other structures, the following sign:

PROPERTY ACQUIRED FOR
 HIGHWAY CONSTRUCTION
 TO BE DEMOLISHED BY THE

VANDALS WILL BE PROSECUTED

The signs shall be positioned in a prominent location on the structure so that they can be easily seen and read and at a sufficient height to prevent defacing. The Contractor shall not paint signs nor start demolition of any building(s) prior to the time that the State becomes the owner of the respective building(s).

The Contractor has the option of removing the non-friable asbestos prior to demolition or demolishing the building(s) with the non-friable asbestos in place. Refer to the Special

Provisions titled "Asbestos Abatement (General Conditions)" and "Removal and Disposal of Non-Friable Asbestos Building No. 1" contained herein.

Basis of Payment: This work will be paid for at the contract lump sum unit price for BUILDING REMOVAL, numbers as listed above, which price shall be payment in full for complete removal of the buildings and structures, including any necessary backfilling material as specified herein. The lump sum unit price(s) for this work shall represent the cost of demolition and disposal assuming all non-friable asbestos is removed prior to demolition. Any salvage value shall be reflected in the contract unit price for this item.

EXPLANATION OF BIDDING TERMS: Two separate contract unit price items have been established for the removal of each building. They are:

1. BUILDING REMOVAL NO. 1
2. REMOVAL AND DISPOSAL OF NON-FRIABLE ASBESTOS, BUILDING NO. 1

The Contractor shall have two options available for the removal and disposal of the non-friable asbestos.

The pay item for removal and disposal of non-friable asbestos will not be deleted regardless of the option chosen by the Contractor.

ASBESTOS ABATEMENT (GENERAL CONDITIONS): This work consists of the removal and disposal of non-friable asbestos from the building(s) to be demolished. All work shall be done according to the requirements of the U.S. Environmental Protection Agency (USEPA), the Illinois Environmental Protection Agency (IEPA), the Occupational Safety and Health Administration (OSHA), the Special Provision for "Removal and Disposal of Non-Friable Asbestos, Building No. 1," and as outlined herein.

Sketches indicating the location of Asbestos Containing Material (ACM) are included in the proposal on pages E1 thru E3. Also refer to the Materials Description Table on page 2 for a brief description and location of the various materials. Also included is a Materials Quantities Table on page 2. This table states the ACM is non-friable and gives the approximate quantity. The quantities are given only for information and it shall be the Contractor's responsibility to determine the exact quantities prior to submitting his/her bid.

The work involved in the removal and disposal of non-friable asbestos if done prior to demolition, shall be performed by a Contractor or Sub-Contractor prequalified with the Illinois Capital Development Board.

The Contractor shall provide a shipping manifest, similar to the one shown on page _____, to the Engineer for the disposal of all ACM wastes.

Permits: The Contractor shall apply for permit(s) in compliance with applicable regulations of the Illinois Environmental Protection Agency. Any and all other permits required by other

federal, state, or local agencies for carrying on the work shall be the responsibility of the Contractor. Copies of the permit(s) shall be sent to the district office and the Engineer.

Notifications: The "Demolition/Renovation Notice" form, which can be obtained from the IEPA office, shall be completed and submitted to the address listed below at least ten days prior to commencement of any asbestos removal or demolition activity. Separate notices shall be sent for the asbestos removal work and the building demolition if they are done as separate operations.

Asbestos Demolition/Renovation Coordinator
Illinois Environmental Protection Agency
Division of Air Pollution Control
P. O. Box 19276
Springfield, Illinois 62794-9276
(217) 785-1743

Notices shall be updated if there is a change in the starting date or the amount of asbestos changes by more than 20 percent.

Submittals:

- A. All submittals and notices shall be made to the Engineer except where otherwise specified herein.
- B. Submittals that shall be made prior to start of work:
 1. Submittals required under Asbestos Abatement Experience.
 2. Submit documentation indicating that all employees have had medical examinations and instruction on the hazards of asbestos exposure, on use and fitting of respirators, on protective dress, on use of showers, on entry and exit from work areas, and on all aspects of work procedures and protective measures as specified in Worker Protection Procedures.
 3. Submit manufacturer's certification stating that vacuums, ventilation equipment, and other equipment required to contain airborne fibers conform to ANSI 29.2.
 4. Submit to the Engineer the brand name, manufacturer, and specification of all sealants or surfactants to be used. Testing under existing conditions will be required at the direction of the Engineer.
 5. Submit proof that all required permits, site locations, and arrangements for transport and disposal of asbestos-containing or asbestos-contaminated materials, supplies, and the like have been obtained (i.e., a letter of authorization to utilize designated landfill).

6. Submit a list of penalties, including liquidated damages, incurred through non-compliance with asbestos abatement project specifications.
 7. Submit a detailed plan of the procedures proposed for use in complying with the requirements of this specification. Include in the plan the location and layout of decontamination units, the sequencing of work, the respiratory protection plan to be used during this work, a site safety plan, a disposal plan including the location of an approved disposal site, and a detailed description of the methods to be used to control pollution. The plan shall be submitted to the Engineer prior to the start of work.
 8. Submit proof of written notification and compliance with the "Notifications" paragraph.
- C. Submittals that shall be made upon completion of abatement work:
1. Submit copies of all waste chain-of-custodies, trip tickets, and disposal receipts for all asbestos waste materials removed from the work area;
 2. Submit daily copies of work site entry logbooks with information on worker and visitor access;
 3. Submit logs documenting filter changes on respirators, HEPA vacuums, negative pressure ventilation units, and other engineering controls; and
 4. Submit results of any bulk material analysis and air sampling data collected during the course of the abatement including results of any on-site testing by any federal, state, or local agency.

Certificate of Insurance:

- A. The Contractor shall document general liability insurance for personal injury, occupational disease and sickness or death, and property damage.
- B. The Contractor shall document current Workmen's Compensation Insurance coverage.
- C. The Contractor shall supply insurance certificates as specified by the Department.

Asbestos Abatement Experience:

- A. Company Experience. Prior to starting work, the Contractor shall supply evidence that he/she has been prequalified with the Illinois Capital Development Board and that he/she has been included on the Illinois Department of Public Health's list of approved Contractors.
- B. Personnel Experience:

1. For Superintendent, the Contractor shall supply:
 - a. Evidence of knowledge of applicable regulations in safety and environmental protection is required as well as training in asbestos abatement as evidenced by the successful completion of a training course in supervision of asbestos abatement as specified in 40 CFR 763, Subpart E, Appendix C, EPA Model Contractor Accreditation Plan. A copy of the certificate of successful completion shall be provided to the Engineer prior to the start of work.
 - b. Documentation of experience with abatement work in a supervisory position as evidenced through supervising at least two asbestos abatement projects; provide names, contact, phone number, and locations of two projects in which the individual(s) has worked in a supervisory capacity.
2. For workers involved in the removal of asbestos, the Contractor shall provide training as evidenced by the participation and successful completion of an accredited training course for asbestos abatement workers as specified in 40 CFR 763, Subpart E, Appendix C, EPA Model Contractor Accreditation Plan. A copy of the certificate of successful completion shall be provided to all employees who will be working on this project.

ABATEMENT AIR MONITORING: The Contractor shall comply with the following:

- A. **Personal Monitoring.** All personal monitoring shall be conducted per specifications listed in OSHA regulation, Title 29, Code of Federal Regulation 1926.58. All area sampling shall be conducted according to 40 CFR Part 763.90. All air monitoring equipment shall be calibrated and maintained in proper operating condition. Excursion limits shall be monitored daily. Personal monitoring is the responsibility of the Contractor. Additional personal samples may be required by the Engineer at any time during the project.
- B. **Interior Non-Friable Asbestos-Containing Materials.** The Contractor shall perform personal air monitoring during removal of all non-friable Transite and floor tile removal operations. The Engineer will also have the option to require additional personal samples and/or clearance samples during this type of work.
- C. **Exterior Non-Friable Asbestos-Containing Materials.** The Contractor shall perform personal air monitoring during removal of all non-friable cementitious panels, piping, roofing felts, and built up roofing materials that contain asbestos.

The Contractor shall conduct down wind area sampling to monitor airborne fiber levels at a frequency of no less than three per day.

- D. **Air Monitoring Professional**
 1. All air sampling shall be conducted by a qualified Air Sampling Professional supplied by the Contractor. The Air Sampling Professional shall submit documentation of successful completion of the National Institute for Occupational

Safety and Health (NIOSH) course #582 - "Sampling and Evaluating Airborne Asbestos Dust".

2. Air sampling shall be conducted according to NIOSH Method 7400. The results of these tests shall be provided to the Engineer within 24 hours of the collection of air samples.

REMOVAL AND DISPOSAL OF NON-FRIABLE ASBESTOS, BUILDING NO. 1: The Contractor has the option of removing and disposing of the non-friable asbestos prior to demolition of the building(s) or demolishing the building(s) with the non-friable asbestos in place.

Option #1 - If the Contractor chooses to remove all non-friable asbestos prior to demolition, the work shall be done according to the Special Provision titled "Asbestos Abatement (General Conditions)".

Option #2 - If the Contractor chooses to demolish the building(s) with the non-friable asbestos in place, the following provisions shall apply:

1. Continuously wet all non-friable ACM and other building debris with water during demolition.
2. Dispose of all demolition debris as asbestos containing material by placing it in lined, covered transport haulers and placing it in an approved landfill.

This work will be paid for at the contract unit price per lump sum for REMOVAL AND DISPOSAL OF NON-FRIABLE ASBESTOS, BUILDING NO. 1, as shown.

The cost for this work shall be determined as follows:

Option #1 - Actual cost of removal and disposal of non-friable asbestos.

Option #2 - The difference in cost between removing and disposing of the building if all non-friable asbestos is left in place and removing and disposing of the building assuming all non-friable asbestos is removed prior to demolition.

The cost of removing and disposing of the building(s), assuming all non-friable asbestos is removed first, shall be represented by the pay item "BUILDING REMOVAL NO. 1".

Regardless of the option chosen by the Contractor, this pay item will not be deleted, nor will the pay item BUILDING REMOVAL NO. 1 be deleted.

50481

SECTION 1
1.1 Survey Summary Sheet

SITE INFORMATION:

| | | | |
|---------------------|--------------------|-----------------------|----------------------------------|
| FAS Route: | <u>I-55</u> | Address: | <u>24110 W. Seil Road</u> |
| County: | <u>Will</u> | Address: | |
| IDOT Job No: | <u>R-91-032-01</u> | City, State Zip | <u>Shorewood, Illinois 60404</u> |
| Section: | <u>26HB-1BR</u> | Property Type: | <u>Single Family Residence</u> |
| Parcel No: | <u>1DD0017</u> | Construction Date: | <u>1973</u> |
| IDOT Work Order No: | <u>290</u> | Building Size (sqft): | <u>1,120 SF</u> |

| Asbestos Containing Materials | |
|---|--|
| Survey Date | <u>April 4, 2008</u> |
| By Whom: | <u>PSI, Inc.</u> <u>Stefan Clouse</u> <u>100-09199</u> |
| Firm | |
| Inspector | |
| IDPH License No. | |
| Results | |
| Number of Material Types Sampled: | <u>9</u> |
| Number of Samples Collected: | <u>27</u> |
| Number of Materials Testing Positive: | <u>4</u> |
| Was Friable ACM Found? | <u>No</u> |
| Were Roofing Materials Sampled? | <u>Yes</u> |
| Are There Unique State or Local Requirements? | <u>Yes</u> |
| Laboratory Utilized: | |
| Name: | <u>PSI, Inc.</u> |
| Address: | <u>600 Vista Park Drive</u> <u>Pittsburgh, PA 15205</u> |
| Building Access Limitations: | |
| <u>We were un-able to enter the basement area at the time of our inspection due to the basement being flooded. This area should be inspected prior to any demolition activities taking place.</u> | |

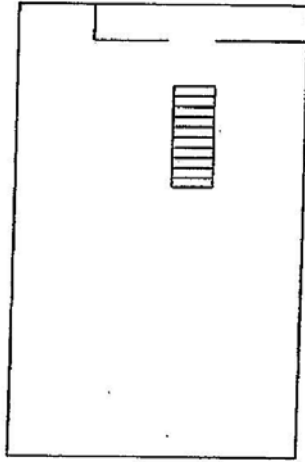
SECTION 1
 1.2 Survey Summary & Results

ACM SURVEY RESULTS - Parcel No. 1DD0017
Single Family Residence/ Garage
24110 W. Seil Road
Shorewood, Illinois 60404

The following homogeneous building material types were sampled as part of this survey and their results are summarized in the table below:

| MTL # | MATERIAL DESCRIPTION | LOCATION | F/NF ¹ | COND. ₂ | % ACM ³ | # SAMPLES | QUANTITY (ENG/MET) |
|---------------------------------|---|-----------------------------------|-------------------|--------------------|-----------------------------------|-----------|----------------------|
| 01 | Drywall and joint compound | Throughout | F | Fair | Drywall ND Joint Compound <1%* | 3 | 2,500 sf 232.3 sm |
| 02 | 12" x 12" White self-stick vinyl floor tile | Kitchen | NF | Fair | ND | 3 | 175 sf 16.3 sm |
| 03 | Yellow self stick vinyl sheet flooring | Kitchen | NF | Fair | 20% | 3 | 175 sf 16.3 sm |
| 04 | 12" x 12" Brownish/ red vinyl floor tile/ mastic | Front foyer | NF | Fair | Floor Tile 3% Mastic ND | 3 | 25 sf 2.3 sm |
| 05 | 12" x 12" Green patterned self-stick vinyl floor tile | Bathroom | NF | Fair | ND | 3 | 55 sf 5.1 sm |
| 05 | Asphalt roof shingles | Roof | NF | Fair | ND | 3 | 1,200 sf 111.5 sm |
| 07 | Exterior flashing | Between house and basement alcove | NF | Fair | 12% | 3 | 10 lf 3 lm |
| 08 | Ceramic wall tile mastic | Bathroom | NF | Fair | ND | 3 | 60 sf 5.6 sm |
| 09 | Interior window caulk | S. Front room big window | NF | Fair | 12% | 3 | 30 lf 9.1 lm |
| TOTAL QUANTITY OF ACM | | | | | | | 200 sf |
| ESTIMATED ABATEMENT COST | | | | | | | 40 lf |
| | | | | | | | \$2,258.75 |

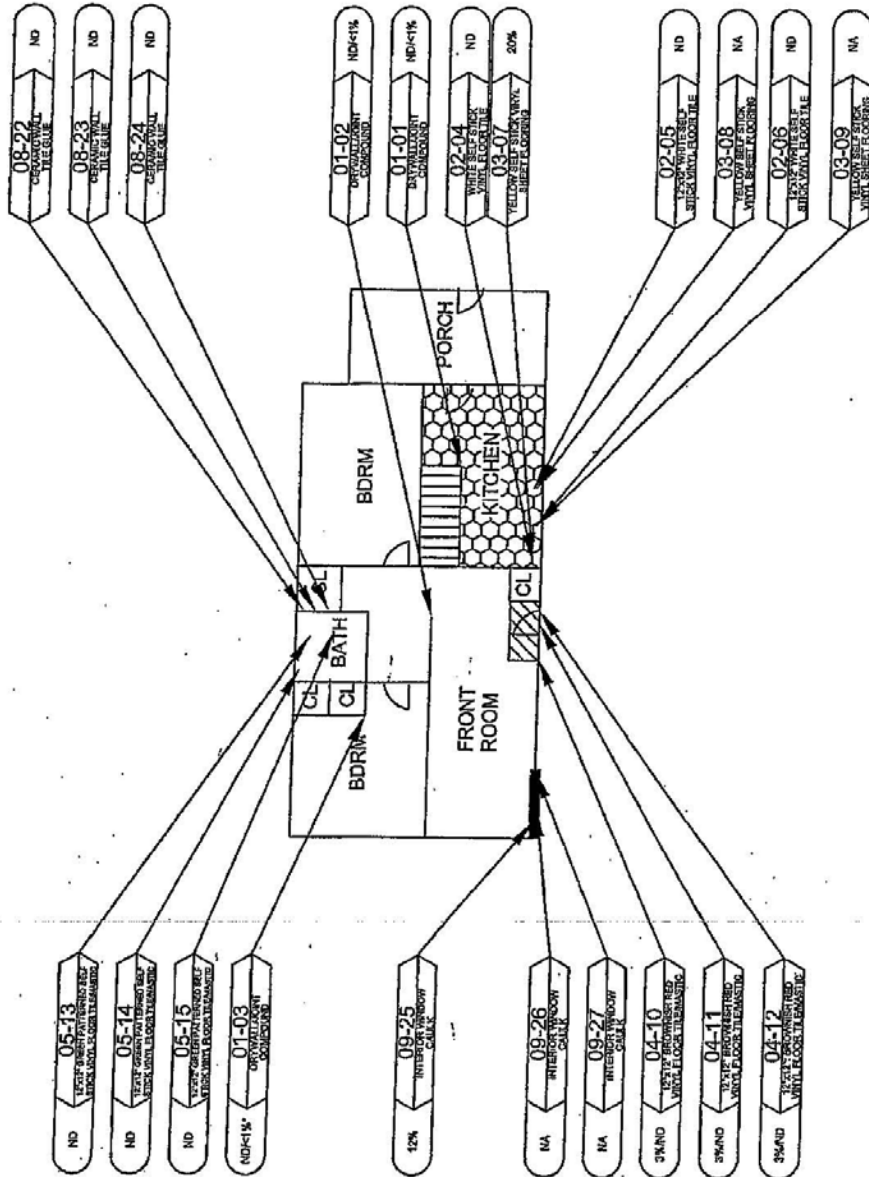
¹ F = Friable; NF = Nonfriable Friability is further defined in section 4.
² Cond. = Condition Of Materials Either good, fair or poor.
³ ND = None Detected
 * Point Count Analysis



**UNABLE TO GAIN ACCESS
 BASEMENT PLAN**



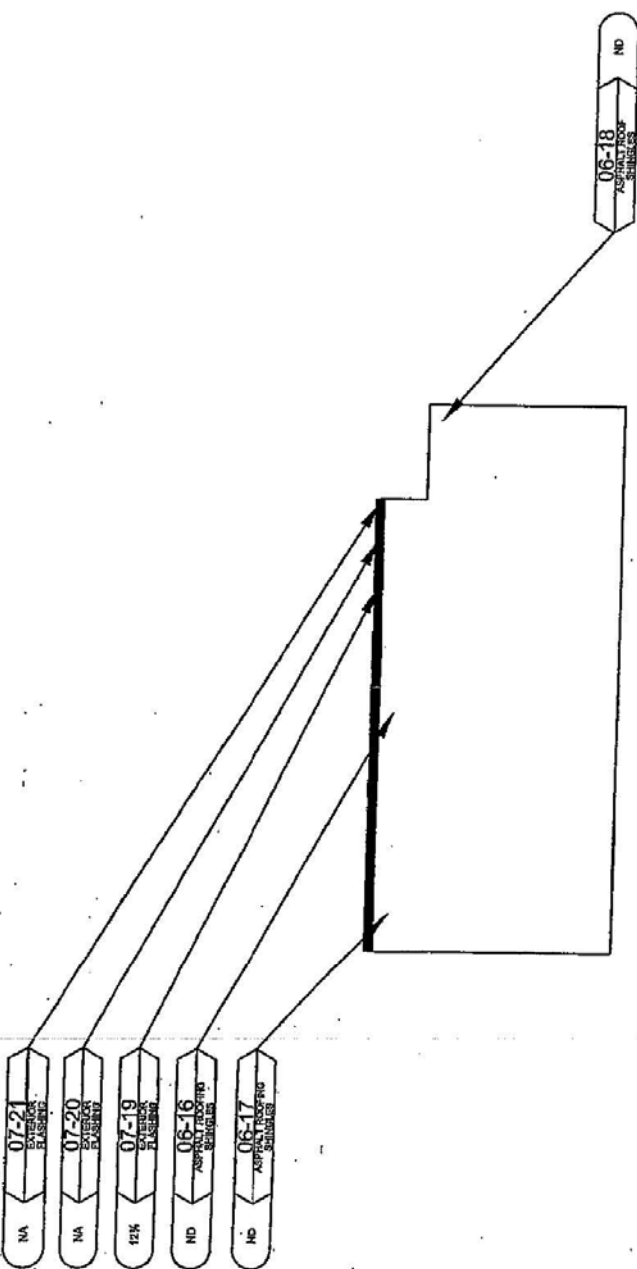
| | | | | | | | | |
|--|--|---|---|--|---|--|---|---------------------|
| Environmental & Geotechnical Consulting & Engineering, Inc. 444 S.W. Harrison St., Suite 100 Chicago, IL 60606 (773) 353-2700 | ASBESTOS GROUP 1 - 10/10/07 2 - 10/10/07 3 - 10/10/07 4 - 10/10/07 5 - 10/10/07 6 - 10/10/07 7 - 10/10/07 8 - 10/10/07 9 - 10/10/07 10 - 10/10/07 | SAMPLE LEGEND N/A = NOT ANALYZED P = POSITIVE TR = TRACE PC = POINT COUNT ANALYSIS | ILLINOIS DEPARTMENT OF TRANSPORTATION | PARCEL NO. 1000017 24110 W. SEIL ROAD SHOREWOOD, ILLINOIS 60084 ILLINOIS DEPARTMENT OF TRANSPORTATION 240 SOUTH WASHINGTON PARKWAY SPRINGFIELD, ILLINOIS 62704 | OWNER EPW PROJECT # 047-5A1E3 | CONTRACT RT SCALE NTS | DATE 04-16-08 WO # 280 | PHONE E 1 |
| | SAMPLE NUMBER 10/10/07 10/10/07 10/10/07 10/10/07 10/10/07 10/10/07 10/10/07 10/10/07 10/10/07 10/10/07 | | MATERIAL DESCRIPTION 1 - FLOOR 2 - WALL 3 - CEILING 4 - FLOOR 5 - WALL 6 - CEILING 7 - FLOOR 8 - WALL 9 - CEILING 10 - FLOOR | RESULTS 1 - N/A 2 - N/A 3 - N/A 4 - N/A 5 - N/A 6 - N/A 7 - N/A 8 - N/A 9 - N/A 10 - N/A | | | | |



| | |
|---------|--|
| GROUP 8 | INTERIOR WINDOW GULL |
| GROUP 4 | 12"x12" BROWNISH RED VINYL FLOOR TILE |
| GROUP 3 | YELLOW SELF STICK VINYL SHEET FLOORING |

FIRST FLOOR PLAN

| | | | | | |
|--|--|--|--------------------------|------------------|--------------------------|
| Environmental Engineering & Construction Consulting - Engineering - Testing 41414 S. Highway 101 #4 (708) 238-0720 | SAMPLE LEGEND NA = NOT ANALYZED N of P = POSITIVE P of P = POSITIVE P = POINT COUNT ANALYSIS | ILLINOIS DEPARTMENT OF TRANSPORTATION | PROJECT NO. 047-04163 | DATE 04-19-08 | SHEET NO. 230 |
| | ILLINOIS DEPARTMENT OF TRANSPORTATION 2500 SOUTH DIRKSEN PARKWAY SPRINGFIELD, ILLINOIS 62764 | PROJECT NO. 047-04163 | DATE 04-19-08 | SHEET NO. 230 | PROJECT NO. 047-04163 |




ROOF PLAN

GROUP 7 EXTERIOR FLASHING

| | | | | | | | | | | | | |
|--|--------------------------|---|---|----------------------|---|---|--|--|--------------|---------------|------------------|----------------|
| Environmental Geotechnical Construction Consulting & Engineering 1441 N. Herndon St. Peoria, IL 61611 (309) 692-0220 | ASBESTOS SAMPLE GROUP | SAMPLE NUMBER 07-21 07-20 07-19 06-16 06-17 06-18 | SAMPLE LOCATION EXTERIOR FLASHING EXTERIOR FLASHING EXTERIOR FLASHING ASPHALT ROOF SHINGLES ASPHALT ROOF SHINGLES ASPHALT ROOF SHINGLES | MATERIAL DESCRIPTION | SAMPLE RESULT N/A N/A N/A N/A N/A N/A | SAMPLE LEGEND N/A = NOT ANALYZED P = POSITIVE TR = TRACE O = POINT COUNT ANALYSIS | Illinois Department of Transportation | PARCEL NO. 1000017 24110 W. SEL ROAD SHOREWOOD, ILLINOIS 60404 ILLINOIS DEPARTMENT OF TRANSPORTATION 2300 SOUTH DRUSSEN PARKWAY SPRINGFIELD, ILLINOIS 62764 | DRAWN EFW | CHECKED RT | DATE 04-18-03 | REVISION E3 |
| | PROJECT NO. 047-5A103 | | | SCALE NTS | WORK # 290 | | | | | | | |

REGULATED FLOODWAY CONSTRUCTION PERMIT

| | |
|---|--|
|  STATE OF ILLINOIS | |
| Permit No.: DIS-02-2008 | |
| Department of Transportation Division of Highways 2300 South Dirksen Parkway Springfield, IL 62764 | |
| REGULATED FLOODWAY CONSTRUCTION PERMIT RIVERS, LAKES AND STREAMS ACT "615 ILCS 5" | |
| PERMISSION IS HEREBY GRANTED TO: Illinois Department of Transportation, Division of Highways, Region 1 | |
| FOR CONSTRUCTION OF : a Storm Sewer pipe and outfall structure, roadway re-grading and compensatory storage excavation in the floodway of the DuPage River | |
| IN ACCORDANCE WITH THE DATED <u>March 14, 2008</u> | Illinois Department of Transportation, FAI 55 at FAP 338 Illinois Route 59, Section (26.26HB - 1& 114) 12-2, Existing and Proposed IL-59 Drainage and Utilities STA 7514+00 to STA. 7527+00 AND MADE A PART HEREOF, AND SUBJECT TO THE |
| TERMS SHOWN ON THE BACK HEREOF AND THE SPECIAL CONDITIONS ATTACHED HERE TO AS EXHIBIT. <u>No Special Conditions</u> | |
| EXAMINED AND APPROVED | |
| <u><i>Diana M. O'Keefe</i></u> DISTRICT ENGINEER/CENTRAL BUREAU CHIEF | <u>5/9/08</u> DATE |

Regulated Floodway Construction Permit

THIS PERMIT is subject to the following conditions:

- (a) This permit is granted in accordance with Rivers, Lakes And Streams Act "615 ILCS 5".
- (b) This permit does not convey title to the permittee or recognize title of the permittee to any submerged or other lands, and furthermore, does not convey, lease or provide any right or rights of occupancy or use of the public or private property on which the project or any part thereof will be located, or otherwise grant to the permittee any right or interest in or to the property, whether the property is owned or possessed by the State of Illinois or by any private or public party or parties.
- (c) This permittee does not release the permittee from liability for damage to persons or property resulting from the work covered by this permit, and does not authorize any injury to private property or invasion of private rights.
- (d) This permit does not relieve the permittee of the responsibility to obtain other federal, state or local authorizations required for the construction of the permitted activity; and if the permittee is required by law to obtain approval from any federal agency to do the work, this permit is not effective until the federal approval is obtained.
- (e) The permittee shall, at his own expense, remove all temporary piling, cofferdams, false work, and material incidental to the construction of the project, from floodway, river, stream or lake in which the work is done. If the permittee fails to remove such structures or materials, the state may have removal made at the expense of the permittee. If future need for public navigation or public interest of any character, by the state or federal government, necessitates changes in any part of the structure or structures, such changes shall be made by and at the expense of the permittee or his successors as required by the Department of Transportation or other properly constituted agency, within sixty (60) days from receipt of written notice of the necessity from the Department or other agency, unless a longer period of time is specifically authorized.
- (f) The execution and details of the work authorized shall be subject to the supervision and approval of the Department. Department personnel shall have right of access to accomplish this purpose.
- (g) Starting work on the construction authorized will be considered full acceptance by the permittee of the terms and conditions of the permit.
- (h) The Department in issuing this permit has relied upon the statements and representations made by the permittee; if any statement or representation made by the permittee is found to be false, the permit may be revoked at the option of the Department; and when a permit is revoked all rights of the permittee under the permit are voided.
- (i) If the project authorized by this permit is located in or along Lake Michigan or a meandered lake, the permittee and his successors shall make no claim whatsoever to any interest in any accretions caused by the project.
- (j) In issuing this permit, the Department does not approve the adequacy of the design or structural strength or the structure or improvement.
- (k) Noncompliance with the conditions stated herein will make this permit void.
- (l) If the work permitted is not initiated on or before six years from the date of issuance as shown on the front of this form, this permit shall be void.