

F.A.P. RTE.	SECTION	COUNTY	TOTAL SHEETS	SHEET NO.
346	LAKE	409	144	
STA.	TO STA.		FED. ROAD DIST. NO. D-91-404-99 ILLINOIS FED. AID PROJECT	
			* 125X-HB-(1&2) R-1 CONTRACT # 60826	

TRAFFIC SIGNAL LEGEND

- | | | | | | |
|--|--|--------------------------------------|--|--|--|
| | | CONTROLLER | | | DETECTOR LOOP |
| | | SERVICE INSTALLATION | | | CAST IRON JUNCTION BOX |
| | | SIGNAL HEAD | | | EMERGENCY VEHICLE SYSTEM DETECTOR |
| | | SIGNAL HEAD WITH BACKPLATE | | | CONFIRMATION BEACON |
| | | SIGNAL HEAD, PEDESTRIAN | | | SIGNAL HEAD OPTICALLY PROGRAMMED |
| | | SIGNAL POST | | | CONDUIT SPLICE |
| | | MAST ARM ASSEMBLY AND POLE, STEEL | | | WOOD POLE |
| | | MAST ARM ASSEMBLY AND POLE, ALUMINUM | | | RACEWAY FOR MAGNETIC DETECTOR, TYPE I OR TYPE II |
| | | COMMON TRENCH | | | VEHICLE DETECTOR, NON COMPENSATED, MAGNETIC TYPE |
| | | UNIT DUCT | | | RAILROAD CONTROL CABINET |
| | | HANDHOLE | | | TELEPHONE |
| | | HEAVY DUTY HANDHOLE | | | HORIZONTALLY MOUNTED |
| | | DOUBLE HANDHOLE | | | UNINTERRUPTIBLE POWER SUPPLY |
| | | G.S. CONDUIT IN TRENCH OR PUSHED | | | COMBINATION MAST ARM ASSEMBLY AND POLE STEEL |
| | | PEDESTRIAN PUSH-BUTTON DETECTOR | | | |

THE TRAFFIC SIGNAL CONTROLLER SHALL BE NTCIP CONTROLLER THAT WILL ALLOW THE TRAFFIC SIGNAL TO BE ADDED TO THE LAKE COUNTY PASSAGE SYSTEM

NOTES:

MOUNT SIGNAL HEADS USING STEEL MAST ARM MOUNTS SHOWN ON HIGHWAY STANDARD 880006.
 CENTER EASTBOUND SIGNAL HEADS OVER APPROACH LANES.
 CENTER WESTBOUND SIGNAL HEAD OVER EASTBOUND CENTER LINE.
 SEE SPECIAL PROVISION FOR INFORMATION TO DETERMINE MAST ARM CONNECTION FLANGE LOCATION.
 CONCRETE FOUNDATION TOP SHALL BE 4" ABOVE GRADE.

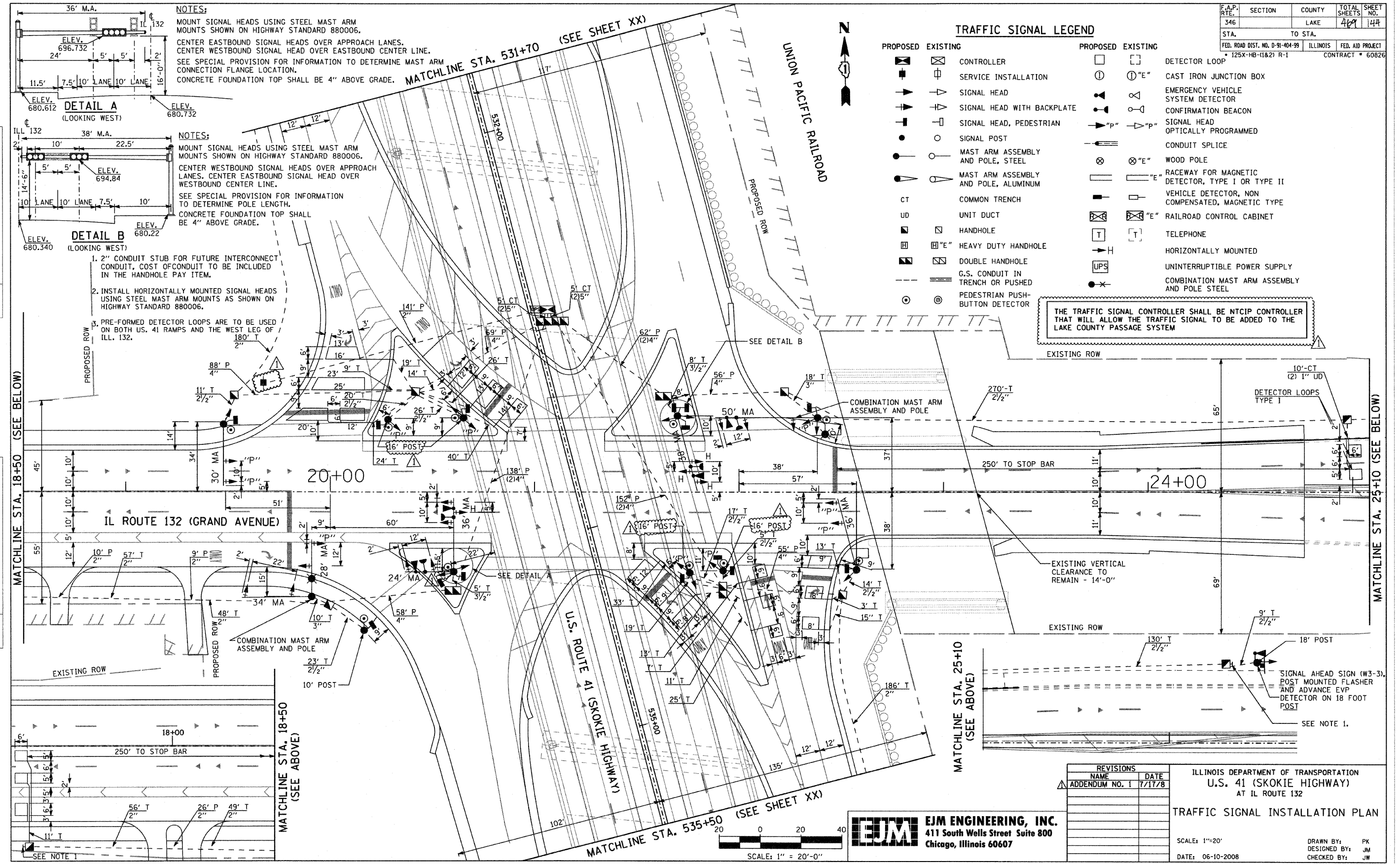
NOTES:

MOUNT SIGNAL HEADS USING STEEL MAST ARM MOUNTS SHOWN ON HIGHWAY STANDARD 880006.
 CENTER WESTBOUND SIGNAL HEADS OVER APPROACH LANES.
 CENTER EASTBOUND SIGNAL HEAD OVER WESTBOUND CENTER LINE.
 SEE SPECIAL PROVISION FOR INFORMATION TO DETERMINE POLE LENGTH.
 CONCRETE FOUNDATION TOP SHALL BE 4" ABOVE GRADE.

- 2" CONDUIT STUB FOR FUTURE INTERCONNECT CONDUIT, COST OF CONDUIT TO BE INCLUDED IN THE HANDHOLE PAY ITEM.
- INSTALL HORIZONTALLY MOUNTED SIGNAL HEADS USING STEEL MAST ARM MOUNTS AS SHOWN ON HIGHWAY STANDARD 880006.
- PRE-FORMED DETECTOR LOOPS ARE TO BE USED ON BOTH U.S. 41 RAMPS AND THE WEST LEG OF ILL. 132.

PLAN	DATE	BY
REVISIONS		
NO.		

PROFILE	DATE	BY
REVISIONS		
NO.		



EJM ENGINEERING, INC.
 411 South Wells Street Suite 800
 Chicago, Illinois 60607

REVISIONS	
NAME	DATE
ADDENDUM NO. 1	7/17/8

ILLINOIS DEPARTMENT OF TRANSPORTATION
 U.S. 41 (SKOKIE HIGHWAY)
 AT IL ROUTE 132
TRAFFIC SIGNAL INSTALLATION PLAN
 SCALE: 1"=20'
 DATE: 06-10-2008
 DRAWN BY: PK
 DESIGNED BY: JM
 CHECKED BY: JW

