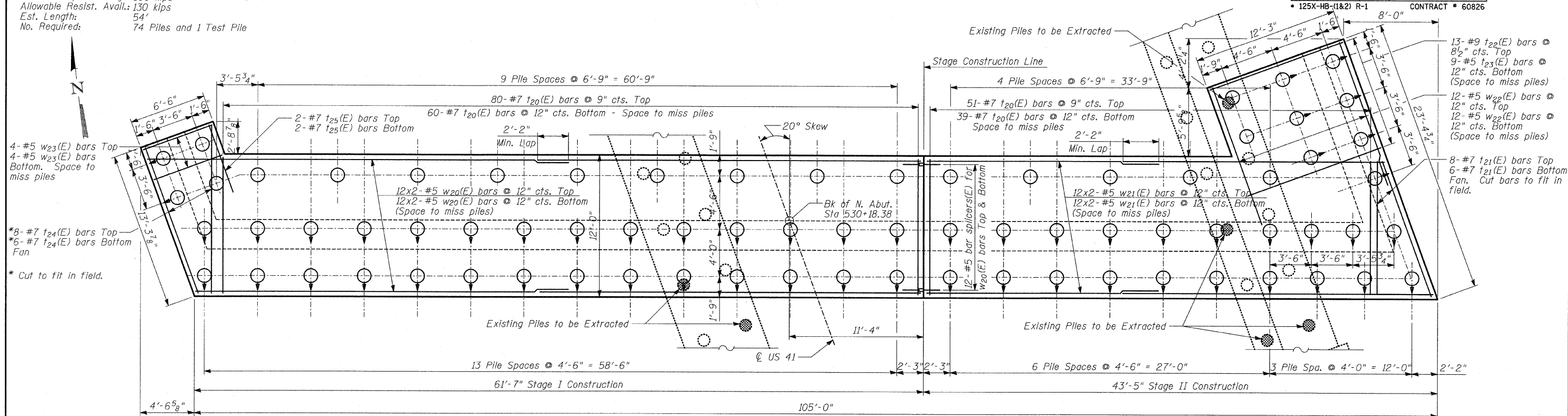


PILE DATA:

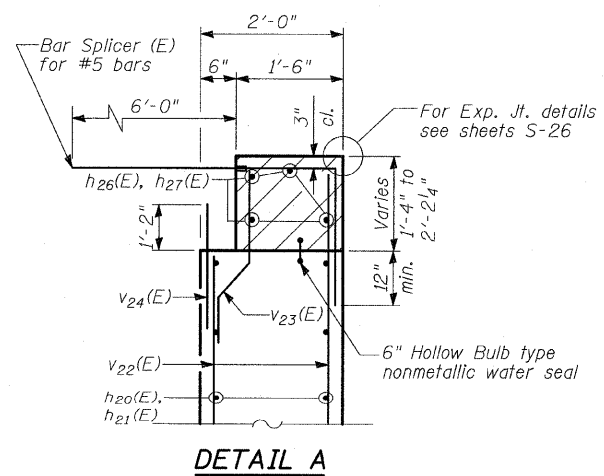
Type: 14" ϕ Metal Shell Piles w/0.25" Thick Walls
 Nominal Req'd Bearing: 390 kips
 Allowable Resist. Avail.: 130 kips
 Est. Length: 54'
 No. Required: 74 Piles and 1 Test Pile

STATE OF ILLINOIS
 DEPARTMENT OF TRANSPORTATION

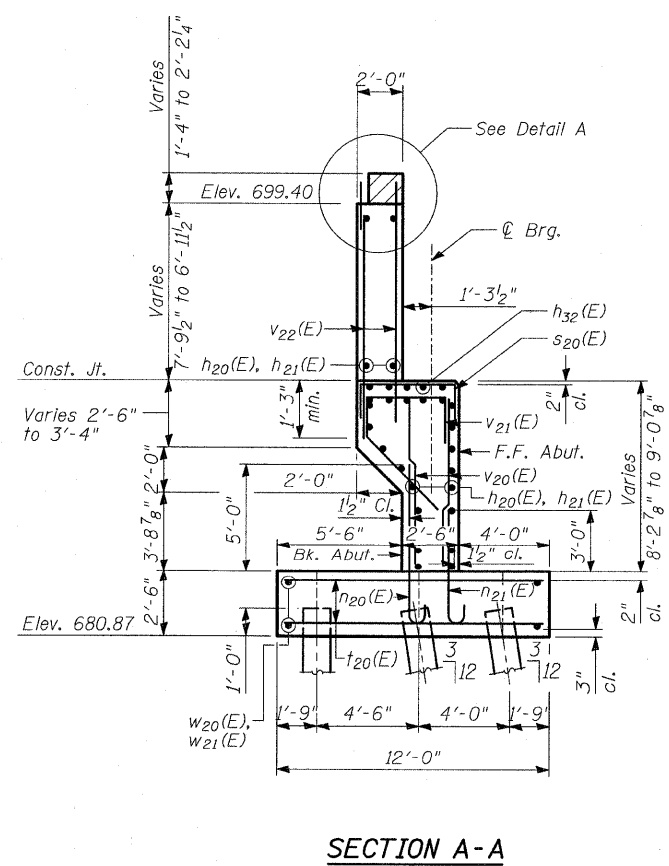
ROUTE NO.	SECTION	COUNTY	TOTAL SHEETS	SHEET NO.	SHEET NO. - S-39
346	*	LAKE	469	208	S-66 SHEETS
FED. ROAD DIST. NO.		ILLINOIS	FED. AID PROJECT		
* 125X-HB-(1&2) R-1		CONTRACT # 60826			



FOOTING PLAN - NORTH ABUTMENT



DETAIL A



SECTION A-A

NOTES

1. For details of Bar Splicers, see sheet S-28 of S-66.
2. Hatched area to be poured after superstructure false work has been removed. Quantity of concrete included with Concrete Superstructure.
3. Space reinforcement in cap to miss anchor bolts.
4. Pour steps monolithically with cap.

**NORTH ABUTMENT
 DETAILS II**

FAP 346 (U.S. ROUTE 41 - SKOKIE
 HIGHWAY) OVER ILLINOIS ROUTE 132
 SECTION 125X-HB-(1&2)R-1
 LAKE COUNTY
 S.N. 049-0209

Rev. 7-17-08

TYLIN INTERNATIONAL

DESIGNED	- SP
CHECKED	- AD
DRAWN	- SP, MAF
CHECKED	- AD