

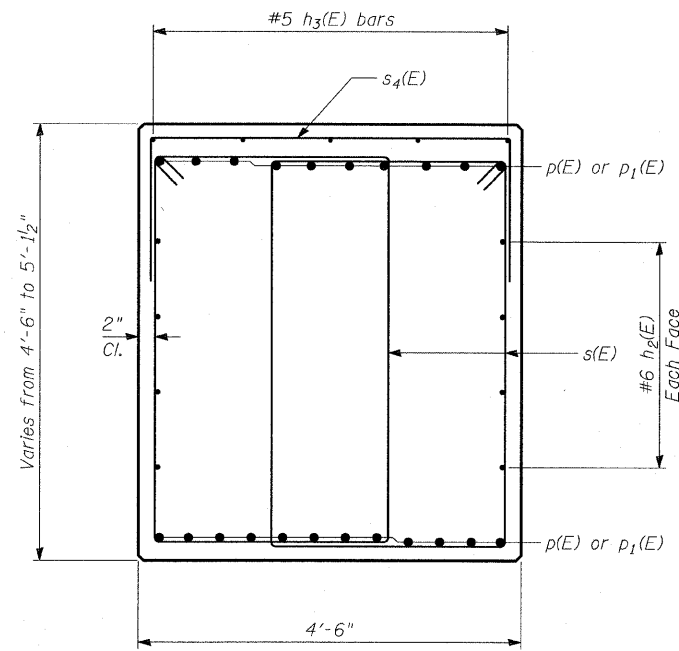
STATE OF ILLINOIS  
DEPARTMENT OF TRANSPORTATION

ROUTE NO.	SECTION	COUNTY	TOTAL SHEETS	SHEET	SHEET NO. - S-44 S-66 SHEETS
346	*	LAKE	469	213	
FED. ROAD DIST. NO.		ILLINOIS	FED. AID PROJECT		CONTRACT # 60826

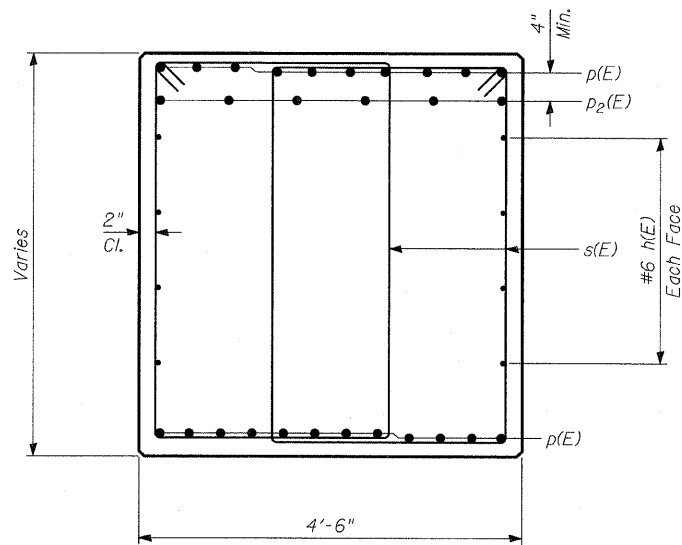
BILL OF MATERIAL

Bar	No.	Size	Length	Shape
h(E)	40	#6	31'-2"	—
h <sub>1</sub> (E)	12	#6	35'-1"	—
h <sub>2</sub> (E)	8	#6	40'-1"	—
h <sub>3</sub> (E)	10	#5	9'-10"	—
n(E)	126	#9	7'-10"	U
p(E)	22	#10	55'-2"	—
p <sub>1</sub> (E)	22	#10	40'-1"	—
p <sub>2</sub> (E)	12	#10	15'-6"	—
s(E)	538	#5	17'-7"	□
s <sub>1</sub> (E)	97	#5	15'-10"	□
s <sub>2</sub> (E)	97	#5	13'-0"	□
s <sub>3</sub> (E)	10	#5	10'-9"	U
s <sub>4</sub> (E)	22	#5	10'-0"	□
* sp(E)	7	#5	7'-10"	WWW
t(E)	93	#9	15'-8"	U
t <sub>1</sub> (E)	103	#9	13'-2"	—
u(E)	12	#6	11'-7"	U
v(E)	126	#9	11'-0"	—
v <sub>1</sub> (E)	14	#5	4'-3"	—
w(E)	76	#9	35'-0"	—
w <sub>1</sub> (E)	38	#9	38'-8"	—
Reinforcement Bars, Epoxy Coated		POUND	60,870	
Structure Excavation		CU YD	3,901	
Concrete Structures		CU YD	377	
Furnishing Metal Pile Shells 14" (0.25")		FOOT	4,150	
Driving Piles		FOOT	4,150	
Test Pile Metal Shells		EACH	1	
Bar Splicers		EACH	80	
Pile Shoes		EACH	84	

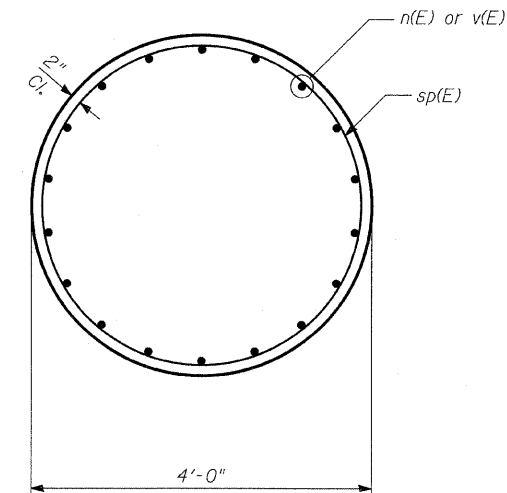
\* Length is height of spiral.



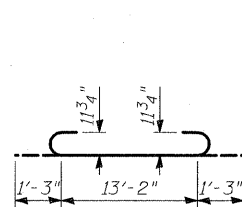
SECTION A-A



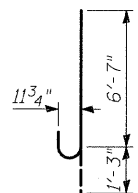
SECTION B-B



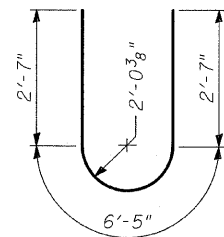
SECTION C-C



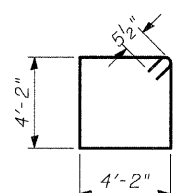
BAR t(E)



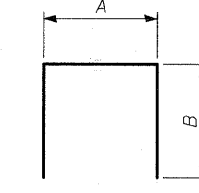
BAR n(E)



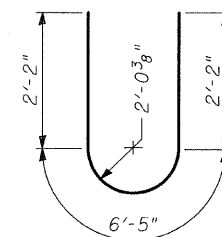
BAR u(E)



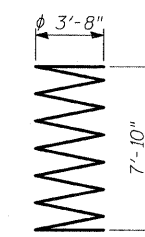
BAR s(E)



BARS s<sub>1</sub>(E),  
s<sub>2</sub>(E) & s<sub>4</sub>(E)



BAR s<sub>3</sub>(E)



BAR sp(E)

MARK TABLE

Bar	A	B
s <sub>1</sub> (E)	4'-2"	5'-10"
s <sub>2</sub> (E)	4'-2"	4'-5"
s <sub>4</sub> (E)	4'-2"	2'-5"

TYLIN INTERNATIONAL

DESIGNED	- MB
CHECKED	- AD
DRAWN	- MAF
CHECKED	- AD, MAF

PIER 1 DETAILS

FAP 346 (U.S. ROUTE 41 - SKOKIE  
HIGHWAY) OVER ILLINOIS ROUTE 132  
SECTION 125X-HB-(1&2)R-1  
LAKE COUNTY  
S.N. 049-0209

Rev. 7-17-06