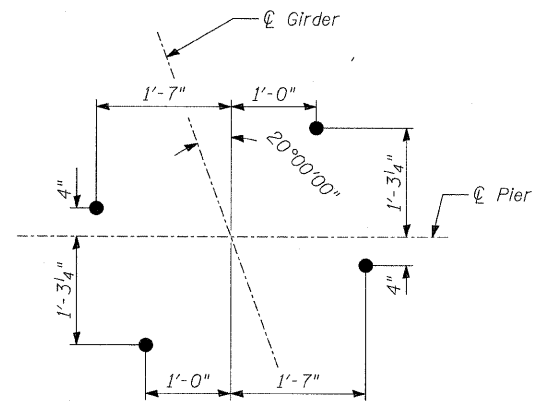
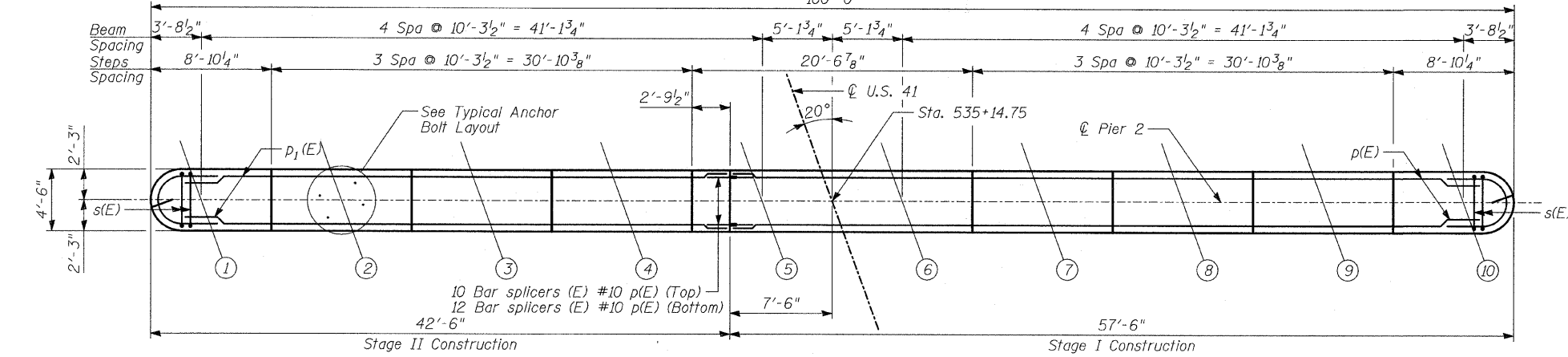


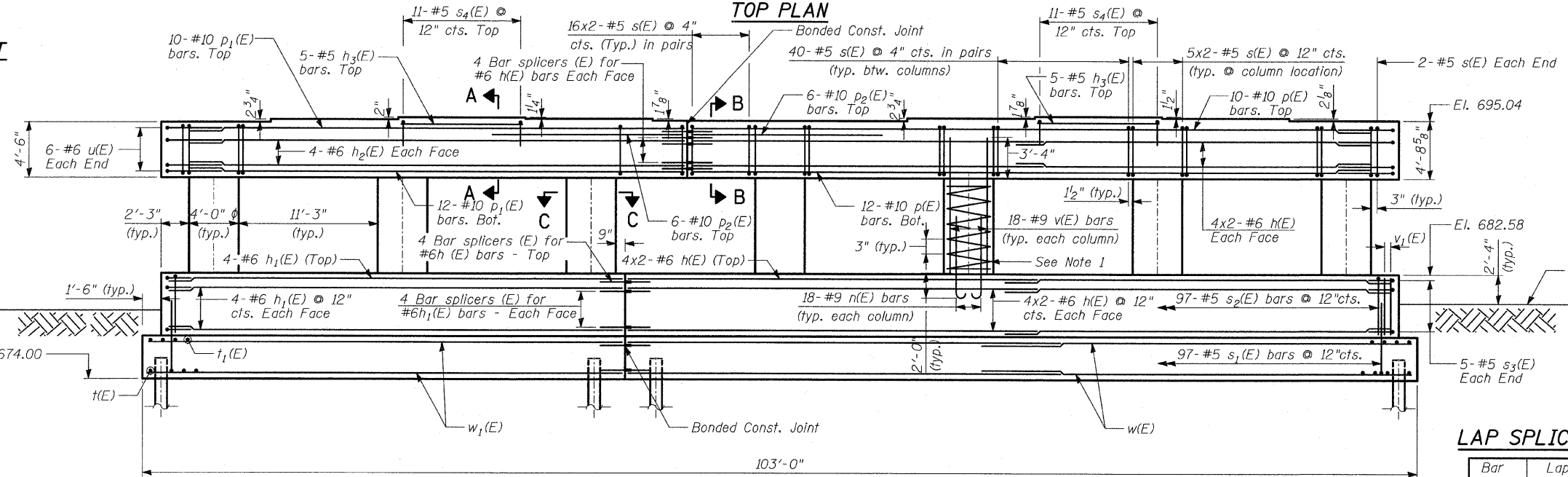
STATE OF ILLINOIS
DEPARTMENT OF TRANSPORTATION

| | | | | | |
|---------------------|---------|----------|------------------|-------|------------------|
| ROUTE NO. | SECTION | COUNTY | TOTAL SHEETS | SHEET | SHEET NO. - S-45 |
| 346 | | LAKE | 469 | 214 | S-66 SHEETS |
| FED. ROAD DIST. NO. | | ILLINOIS | FED. AID PROJECT | | |
| | | | CONTRACT # 60826 | | |



BEARING SEAT ELEVATIONS

| Girder | Seat Elev. |
|--------|------------|
| 1 | 694.82 |
| 2 | 695.05 |
| 3 | 695.22 |
| 4 | 695.12 |
| 5 | 694.96 |
| 6 | 694.98 |
| 7 | 695.19 |
| 8 | 695.35 |
| 9 | 695.22 |
| 10 | 695.04 |



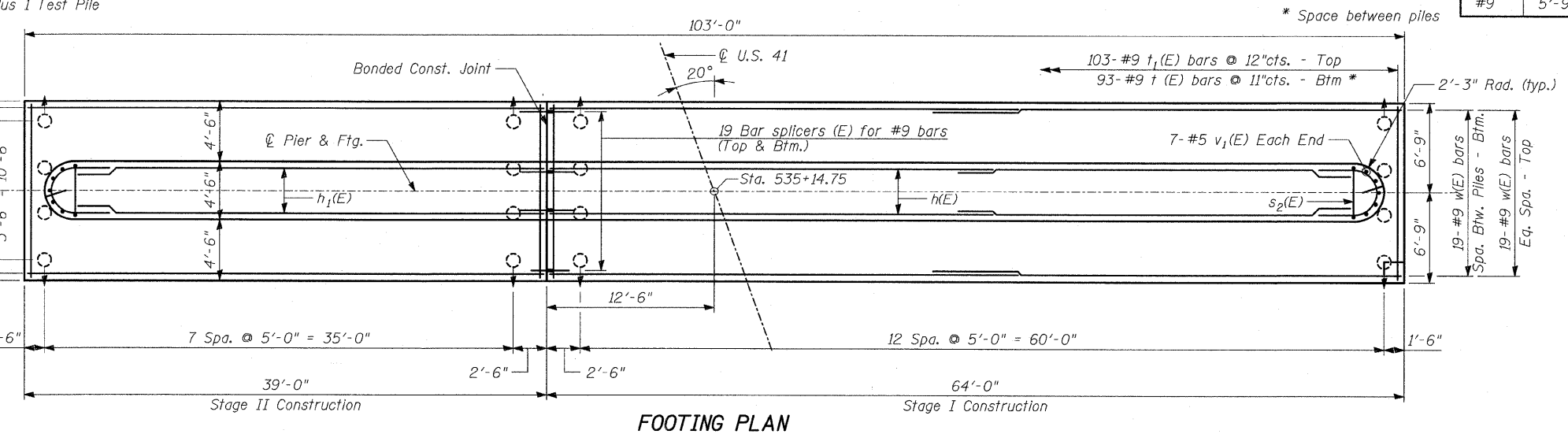
LAP SPLICES

| Bar | Lap |
|-----|-------|
| #5 | 2'-2" |
| #6 | 2'-7" |
| #8 | 4'-6" |
| #9 | 5'-9" |

- Notes:
1. For spirals in each column, provide 1/2 extra turns top & bottom. Extend spiral 2" into pier cap. Provide 4-#4 spacers or equivalent.
 2. Space reinforcement in cap to miss anchor bolts.
 3. Pour steps monolithically with cap.
 4. Space bottom reinforcement in footing to miss piles.
 5. See Sheet S-46 of S-66, for Sections A-A, B-B and C-C.

PILE DATA

Type: Metal Shell - 14" φ x 0.25" wall
 Nominal Required Bearing: 390 kips
 Allowable Resistance Available: 130 kips
 Est. Length: 48.0'
 No. Req'd: 83 Plus 1 Test Pile



PIER 2
 FAP 346 (U.S. ROUTE 41 - SKOKIE HIGHWAY) OVER ILLINOIS ROUTE 132
 SECTION 125X-HB-(1&2)R-1
 LAKE COUNTY
 S.N. 049-0209

TYLIN INTERNATIONAL

| | |
|----------|-----------|
| DESIGNED | - MB |
| CHECKED | - AD |
| DRAWN | - KA, MAF |
| CHECKED | - AD |