

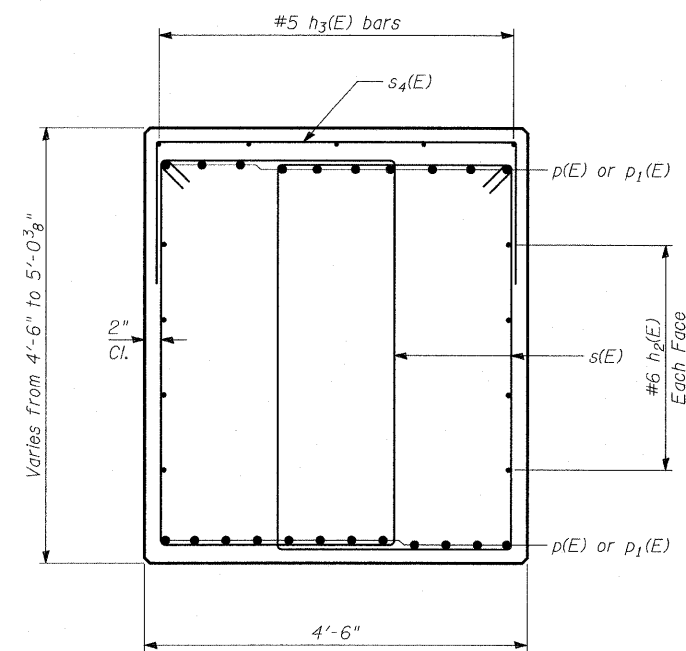
STATE OF ILLINOIS
DEPARTMENT OF TRANSPORTATION

ROUTE NO.	SECTION	COUNTY	TOTAL SHEETS	SHEET NO.
346	*	LAKE	469	S-46
FED. ROAD DIST. NO.		ILLINOIS	FED. AID PROJECT-	S-66 SHEETS

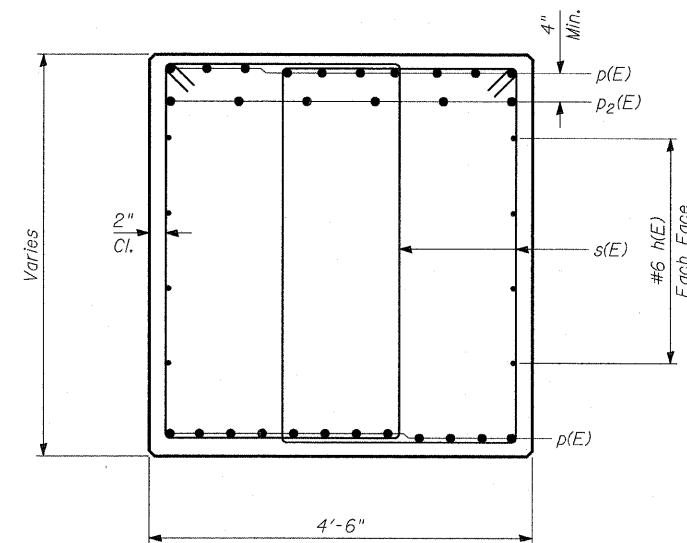
• 125X-HB-(1&2) R-1 CONTRACT # 60826

BILL OF MATERIAL

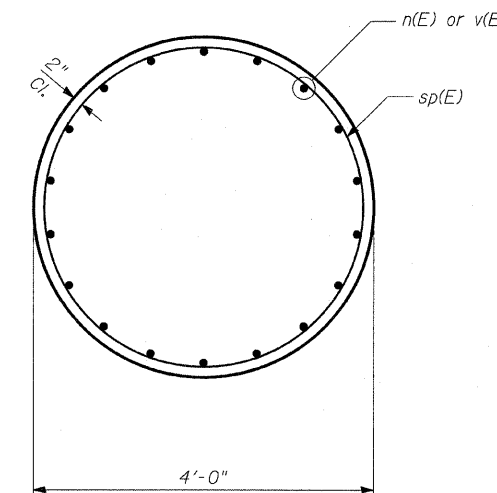
Bar	No.	Size	Length	Shape
h(E)	40	#6	31'-2"	—
h ₁ (E)	12	#6	35'-1"	—
h ₂ (E)	8	#6	40'-1"	—
h ₃ (E)	10	#5	9'-10"	—
n(E)	126	#9	7'-10"	U
p(E)	22	#10	55'-2"	—
p ₁ (E)	22	#10	40'-1"	—
p ₂ (E)	12	#10	15'-6"	—
s(E)	538	#5	17'-7"	□
s ₁ (E)	97	#5	15'-10"	□
s ₂ (E)	97	#5	13'-0"	□
s ₃ (E)	10	#5	10'-9"	U
s ₄ (E)	22	#5	10'-0"	□
* sp(E)	7	#5	7'-11"	WWW
t(E)	93	#9	15'-8"	U
t ₁ (E)	103	#9	13'-2"	—
u(E)	12	#6	11'-7"	U
v(E)	126	#9	11'-1"	—
v ₁ (E)	14	#5	4'-3"	—
w(E)	76	#9	35'-0"	—
w ₁ (E)	38	#9	38'-8"	—
Reinforcement Bars, Epoxy Coated			POUND	60,930
Structure Excavation			CU YD	3,658
Concrete Structures			CU YD	376
Furnishing Metal Pile Shells 14" x 3/8"			FOOT	3,984
Driving Piles			FOOT	3,984
Test Pile Metal Shells			EACH	1
Bar Splicers			EACH	80
Pile Shoes			EACH	84



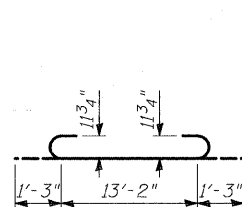
SECTION A-A



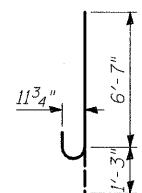
SECTION B-B



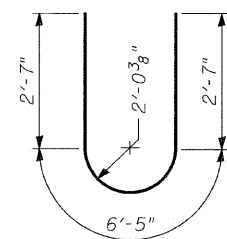
SECTION C-C



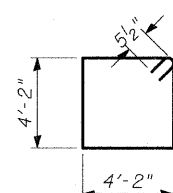
BAR t(E)



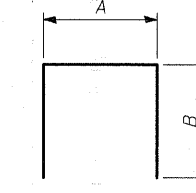
BAR n(E)



BAR u(E)



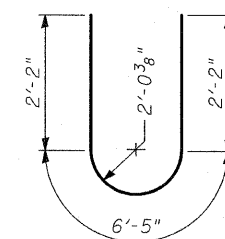
BAR s(E)



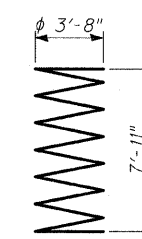
BARS s₁(E),
s₂(E) & s₄(E)

MARK TABLE

Bar	A	B
s ₁ (E)	4'-2"	5'-10"
s ₂ (E)	4'-2"	4'-5"
s ₄ (E)	4'-2"	2'-5"



BAR s₃(E)



BAR sp(E)

TYLIN INTERNATIONAL

DESIGNED	- MB
CHECKED	- AD
DRAWN	- MAF
CHECKED	- AD, MAF

* Length is height of spiral.

PIER 2 DETAILS

FAP 346 (U.S. ROUTE 41 - SKOKIE
HIGHWAY) OVER ILLINOIS ROUTE 132
SECTION 125X-HB-(1&2)R-1
LAKE COUNTY
S.N. 049-0209

Rev. 7-17-08