

F.A.P. RTE.	SECTION	COUNTY	TOTAL SHEETS	SHEET NO.
346		LAKE	469	4
STA.	TO STA.		FED. AID PROJECT	
			ILLINOIS	
FED. ROAD DIST. NO. D-91-404-99			CONTRACT # 60826	
125X-HB-(1&2) R-1				

GENERAL NOTES:

- THE CONTRACTOR SHALL MAINTAIN ALL ROADWAYS OPEN TO TRAFFIC AS SHOWN ON THE MAINTENANCE OF TRAFFIC PLANS.
- BEFORE STARTING ANY EXCAVATION, THE CONTRACTOR SHALL CALL J.U.L.I.E. AT (800) 892-0123 OR 811 FOR FIELD LOCATIONS OF BURIED ELECTRIC, TELEPHONE, AND GAS UTILITIES (48 HOURS NOTIFICATION IS REQUIRED). CONTACT MR. DAVID ZIEGLER, DIRECTOR OF ENGINEERING, VILLAGE OF GURNEE AT (847) 599-7550 OR MR. ROB DENIS, SUPERINTENDENT OF PUBLIC WORKS AT (847) 599-6800 FOR WATER AND SEWER LOCATIONS.
- 10 FOOT TRANSITIONS SHALL BE USED TO MATCH PROPOSED CURB AND GUTTER AND MEDIAN ITEMS OF WORK TO EXISTING CURB AND GUTTERS AND MEDIAN ITEMS IN THE FIELD, UNLESS OTHERWISE SHOWN. THE TRANSITIONS SHALL BE PAID FOR AT THE CONTRACT UNIT PRICE FOR THE PROPOSED LARGER ITEM OF SPECIFIED WORK.
- THE CONTRACTOR WILL NOT BE ALLOWED TO SET A YARD OR FIELD OFFICE ON STATE RIGHT-OF-WAY OR PROPERTY WITHOUT PRIOR WRITTEN PERMISSION FROM THE ENGINEER.
- BARRICADES: THE CONTRACTOR SHALL PROVIDE AND INSTALL TWO WEIGHTED SAND BAGS ON EACH TYPE I OR TYPE II BARRICADE USED (ONE WEIGHTED SAND BAG ACROSS EACH BOTTOM RAIL). ALL TYPE III BARRICADES SHALL REQUIRE A MINIMUM OF FOUR SAND BAGS PER BARRICADE.
- NIGHT OPERATIONS: WHEN ARTIFICIAL LIGHTING IS UTILIZED IN NIGHT OPERATIONS, THE CONTRACTOR SHALL EXERCISE THE UTMOST PRECAUTION IN PREVENTING ADVERSE VISIBILITY TO THE MOTORING PUBLIC AS WELL AS THE ADJOINING RESIDENTIAL AREAS.
- ALL STORM SEWER CONNECTIONS WITH PIPES 27 INCHES IN DIAMETER AND SMALLER SHALL BE MADE WITH PRECAST "TEE" OR "WYE" PIPES. FOR PROPOSED STORM SEWER PIPES LARGER THAN 27 INCHES IN DIAMETER, OPENINGS OF THE SPECIFIED DIAMETER SHALL BE MADE IN THE PIPE AT THE TIME IT IS MANUFACTURED. PRECAST "TEE" AND "WYE" PIPE CONNECTIONS FOR PROPOSED STORM SEWER WILL NOT BE PAID FOR SEPARATELY, BUT SHALL BE INCLUDED IN THE COST OF THE INVOLVED STORM SEWERS.
- USE NO.8 EPOXY-COATED TIE BARS CONFORMING TO ARTICLE 1006.1 (B)(2) OF THE STANDARD SPECIFICATION FOR LONGITUDINAL CONSTRUCTION JOINT, GROUTED-IN-PLACE TIE BARS, AS SHOWN ON STATE STANDARDS 420001, AND FOR TYING PCC PAVEMENT WIDENING TO EXISTING CONCRETE PAVEMENT AS SHOWN ON THE PLANS. THE COST OF THIS ITEM SHALL BE INCLUDED IN THE COST OF THE PAVEMENT ITEMS BEING CONSTRUCTED.
- WHEN MILLED PAVEMENT IS OPEN TO TRAFFIC, THE MAXIMUM GRADE DIFFERENTIAL BETWEEN PASSES OF THE MILLING MACHINE SHALL NOT EXCEED 1/2 INCHES WHERE THE SPEED LIMIT IS 45 MPH OR LESS AND 1 INCH WHERE THE SPEED LIMIT IS GREATER THAN 45 MPH. WITH WRITTEN APPROVAL FROM THE ENGINEER, A MAXIMUM GRADE DIFFERENTIAL OF 3 INCHES MAY BE ALLOWED IF THE EDGE OF THE MILLING IS SLOPED A MINIMUM 3:1 (H:V).
- BUTT JOINTS SHALL BE INSTALLED AT THE ENDS OF ALL RESURFACING (WHERE RESURFACING MEETS EXISTING PAVEMENT), IN ACCORDANCE WITH THE "BUTT JOINT AND HOT-MIX ASPHALT TAPER DETAILS" SHEET INCLUDED IN THE PLANS, UNLESS OTHERWISE SPECIFIED.
- SPECIAL UTILITY NOTE: DUE TO THE CONSTRUCTION ACTIVITIES BY OTHERS IN THE PROJECT AREA, UTILITY LOCATIONS SHOWN ON THESE PLANS MAY NOT BE CORRECT OR COMPLETE. THE CONTRACTOR SHALL CONTACT J.U.L.I.E. (SEE NOTE 2) PRIOR TO CONSTRUCTION AND COORDINATE ACTIVITIES WITH THE ENGINEER.
- THE REMOVAL OF EXISTING DRIVEWAY AND FIELD ENTRANCE CULVERTS SHALL BE INCLUDED IN THE COST OF EARTH EXCAVATION, RIGID PAVEMENTS, AND PIPE CULVERT REMOVALS SHALL BE PAID FOR SEPARATELY.
- ALL ELEVATIONS REFER TO U.S.G.S. MEAN SEA LEVEL DATUM.
- STORM SEWER - WATER MAIN QUALITY IS TO BE USED AT LOCATIONS WHERE LATERAL SEPARATION BETWEEN THE SEWER AND WATER MAIN IS LESS THAN 10 FEET AND THE WATER MAIN INVERT IS LESS THAN 1.5 FEET ABOVE THE STORM SEWER CROWN.
- STORM SEWER, RUBBER GASKET IS TO BE USED AT LOCATIONS WHERE THE WATER MAIN CROSSES BELOW THE SEWER, REGARDLESS OF VERTICAL SEPARATION OR WHERE THE BOTTOM OF THE WATER MAIN IS LESS THAN 1.5 FEET ABOVE THE TOP OF THE SEWER.
- BEFORE ORDERING STORM SEWERS, CATCH BASINS, PIPE CULVERTS, PIPE DRAINS, AND MANHOLES, THE CONTRACTOR SHALL REVIEW DRAINAGE SCHEDULES FOUND IN THE PLANS AS TO THE EXACT LENGTH AND QUANTITY REQUIRED.
- SPECIAL ATTENTION IS CALLED TO ARTICLE 107.12 REGARDING RAILROAD FLAGGERS. CONTACT MR. GARY WILWERDING AT UNION PACIFIC RAILROAD AT (708) 649-5210.
- WHEN TRENCHING OR PUSHING CONDUIT OR PERFORMING WORK WITHIN OR NEAR RAILROAD ROW, THE CONTRACTOR SHALL BE RESPONSIBLE FOR PROVIDING QUALIFIED FLAGGERS ACCEPTABLE TO THE DEPARTMENT AND THE RAILROAD COMPANY WITH JURISDICTION OVER THE RAILROAD WITHIN THE LIMITS OF THE PROJECT.
- GUARDRAIL REFLECTORS SHALL NOT BE INSTALLED ON "TRAFFIC BARRIER TERMINAL, TYPE 1 (SPECIAL), TANGENT".
- RESIDENT ENGINEER SHALL CONTACT MS. DEBBIE HANLON, AREA TRAFFIC FIELD ENGINEER, AT (847) 438-2300 TWO WEEKS PRIOR TO THE INSTALLATION OF PERMANENT PAVEMENT MARKING.

- THE CONTRACTOR SHALL MAINTAIN THE SURFACE DRAINAGE OF ALL ROADWAYS DURING CONSTRUCTION OF THIS PROJECT. WHEN EXISTING DRAINAGE FACILITIES ARE DISTURBED, THE CONTRACTOR SHALL PROVIDE AND MAINTAIN TEMPORARY OUTLETS AND CONNECTIONS FOR ALL PRIVATE OR PUBLIC DRAINS, SEWERS, DRAINS AND CATCH BASINS. THE CONTRACTOR SHALL PROVIDE FACILITIES TO TAKE IN ALL STORM WATER, WHICH WILL BE RECEIVED BY THESE DRAINS AND SEWERS AND DISCHARGE SAME. THE CONTRACTOR SHALL PROVIDE AND MAINTAIN A TEMPORARY OUTLET AND BE PREPARED AT ALL TIMES TO DISPOSE OF THE WATER RECEIVED FROM THESE TEMPORARY CONNECTIONS UNTIL INSTALLATION IS COMPLETE, INCLUDING PAVEMENT. THIS WORK SHALL NOT BE PAID FOR DIRECTLY BUT SHALL BE CONSIDERED INCLUDED IN THE CONTRACT. COORDINATION WITH ALL AGENCIES INVOLVED IS REQUIRED.
- THE FOLLOWING PARCELS SHOWN ON THE R.O.W. PLATS ARE NOT INCLUDED IN THIS CONTRACT: 1EU0019, 1EU0019TE, 1EU0020, 1EU0020TE, 1EU0021, 1EU0021TE, 1EU0022, 1EU0023, 1EU0024, 1EU0025, 1EU0026, 1EU0044, 1EU0044TE, 1EU0029, 1EU0029TE, 1EU0030TE, 1EU0031, 1EU0031TE, 1EU0032, 1EU0032TE, 1EU0033TE.
- THIS PROJECT HAS BEEN SIGNED OFF IN-HOUSE (IDOT, DISTRICT 1) FOR SPECIAL WASTE. IF THE PROPOSED SCOPE OF WORK CHANGES, OR IF ADDITIONAL R.O.W./TEMPORARY EASEMENTS ARE REQUIRED, PLEASE CONTACT THE IDOT, DISTRICT 1 ENVIRONMENTAL STUDIES UNIT AT (847) 705-4101 TO DISCUSS ANY POTENTIAL IMPACTS.

INDEX OF STATE STANDARDS

STD. NO.	TITLE
000001-05	STANDARD SYMBOLS, ABBREVIATIONS AND PATTERNS
280001-04	TEMPORARY EROSION CONTROL SYSTEMS
420001-07	PAVEMENT JOINTS
420101-04	7.2M (24') JOINTED PCC PAVEMENT
420106-04	10.8M (36') JOINTED PCC PAVEMENT
420111-02	PCC PAVEMENT ROUNDOUTS
420201-07	ENTRANCE RAMP TERMINAL (JOINTED PCC RAMP PAVEMENT ADJACENT TO JOINTED PCC MAINLINE PAVEMENT)
420301-04	EXIT RAMP TERMINAL (JOINTED PCC RAMP PAVEMENT ADJACENT TO JOINTED PCC MAINLINE PAVEMENT)
420401-06	BRIDGE APPROACH PAVEMENT
420501-04	PCC PAVEMENT AND PCC BASE COURSE ADJACENT TO RAILROAD GRADE CROSSING
424001-05	CURB RAMPS FOR SIDEWALKS
442201-03	CLASS C AND D PATCHES
482006-03	HOT-MIX ASPHALT SHOULDER ADJACENT TO RIGID PAVEMENT
482011-03	HOT-MIX ASPHALT SHOULDER STRIPS/SHOULDERS WITH RESURFACING OR WIDENING AND RESURFACING PROJECTS
515001-02	NAME PLATE FOR BRIDGES
542301-01	PRECAST REINFORCED CONCRETE FLARED END SECTION
542311	GRATING FOR CONCRETE FLARED END SECTION FOR 600MM (24") THRU 1350MM (54") PIPE
542401	METAL END SECTION FOR PIPE CULVERTS
601101	CONCRETE HEADWALL FOR PIPE DRAIN
602001	CATCH BASIN, TYPE A
602006-01	CATCH BASIN, TYPE B
602011	CATCH BASIN, TYPE C
602301-01	INLET, TYPE A
602306-01	INLET, TYPE B
602401-01	MANHOLE, TYPE A
602406-02	MANHOLE, TYPE A, 1800MM (72") DIAMETER
602601-01	PRECAST REINFORCED CONCRETE FLAT SLAB TOP
602701-01	CAST IRON STEPS
604001-02	FRAME AND LIDS, TYPE 1
604036-01	GRATE, TYPE B
604091-01	FRAME AND GRATE, TYPE 24
606001-03	CONCRETE CURB AND COMBINATION CONCRETE CURB AND GUTTER
606301-03	PC CONCRETE ISLANDS AND MEDIANS
606306-02	CORRUGATED R/C CONCRETE MEDIANS
606401	PAVED DITCH
630001-07	STEEL PLATE BEAM GUARDRAIL
630201-05	PCC/HOT-MIX ASPHALT STABILIZATION AT STEEL PLATE BEAM GUARDRAIL
630301-04	SHOULDER WIDENING AT TYPE 1 (SPECIAL) GUARDRAIL TERMINALS
635006-02	REFLECTOR AND TERMINAL MARKER PLACEMENT
635011-01	REFLECTOR MOUNTING AND MARKER DETAILS
637001-03	CONCRETE BARRIER 815MM (32 INCH) HEIGHT
664001-01	CHAIN LINK FENCE
701006-02	OFF-ROAD OPERATIONS, 2L 2W, 4.5 M (15') TO 600MM (24") AWAY. SPEEDS>45 MPH
701400-02	APPROACH TO LANE CLOSURE, FREEWAY/EXPRESSWAY
701401-04	LANE-CLOSURE, FREEWAY/EXPRESSWAY
701411-04	LANE-CLOSURE, MULTILANE AT ENTRANCE OR EXIT RAMP FOR SPEEDS>45 MPH
701416-05	LANE-CLOSURE, FREEWAY/EXPRESSWAY, WITH CROSSOVER AND BARRIER
701606-05	LANE-CLOSURE, MULTILANE, 2W, WITH MOUNTABLE MEDIAN, FOR SPEEDS<45 MPH
701701-05	URBAN LANE CLOSURE, MULTILANE INTERSECTION
701801-03	LANE-CLOSURE, MULTILANE 1W OR 2W, CROSSWALK OR SIDEWALK CLOSURE, FOR SPEEDS<45 MPH
701901	TRAFFIC CONTROL DEVICES
704001-04	TEMPORARY CONCRETE BARRIER
720001	SIGN PANEL MOUNTING DETAILS
720006-01	SIGN PANEL ERECTION DETAILS
720011	METAL POSTS (SIGN, MARKERS, AND DELINEATORS)
720016-01	MAST ARM MOUNTED STREET NAME SIGNS
728001	TELESCOPING STEEL SIGN SUPPORT
729001	APPLICATIONS OF TYPE A AND TYPE B METAL POSTS
731001	BASE FOR TELESCOPING STEEL SIGN SUPPORT
780001-01	TYPICAL PAVEMENT MARKINGS
805001	ELECTRICAL SERVICE INSTALLATION DETAILS
814001-01	CONCRETE HANDHOLES
814006-01	DOUBLE HANDHOLES
857001	STANDARD PHASE DESIGNATION DIAGRAMS AND PHASE SEQUENCES
862001	UNINTERRUPTIBLE POWER SUPPLY
877001-03	STEEL MAST ARM ASSEMBLY AND POLE
877006-02	STEEL MAST ARM ASSEMBLY AND POLE WITH DUAL MAST ARMS
877011-03	STEEL COMBINATION MAST ARM ASSEMBLY AND POLE
878001-06	CONCRETE FOUNDATION DETAILS
880006	TRAFFIC SIGNAL MOUNTING DETAILS

873001-01
880001

REVISIONS	
NAME	DATE
ANNA Z'EMAN	06-17-08

ILLINOIS DEPARTMENT OF TRANSPORTATION
 U.S. 41 (SKOKIE HIGHWAY)
 AT IL ROUTE 132
 GENERAL NOTES, LIST OF
 ILLINOIS DOT HIGHWAY STANDARDS
 AND PROJECT COMMITMENTS
 SCALE: NONE DRAWN BY:
 DATE: MAY 12, 2008 CHECKED BY:

Rev. 7-15-08

DATE	
BY	
PLAN	
NO.	
DATE	
BY	
PROFILE	
NO.	

DATE	
BY	
PROFILE	
NO.	
DATE	
BY	
PROFILE	
NO.	

SUMMARY OF QUANTITIES

IDOT CODE NO.	ITEM DESCRIPTION	UNIT	URBAN TOTAL QUANTITIES	CMM		F 80% FED./20% STATE		CMM 80% FED./20% STATE		
				J000-2A ROADWAY 80% FED./20% STATE	ROADWAY 60% STATE 40% GURNEE	X271-2A BRIDGE	Y007 RETAINING WALLS	Y031-1F TRAFFIC SIGNALS	Y030-1E LIGHTING	J000-2A SIGNING
20100110	TREE REMOVAL (6 TO 15 UNITS DIAMETER)	UNIT	862	862						
20100210	TREE REMOVAL (OVER 15 UNITS DIAMETER)	UNIT	1159	1159						
20101100	TREE TRUNK PROTECTION	EACH	90	90						
20200100	EARTH EXCAVATION	CU YD	88824	88824						
20201200	REMOVAL AND DISPOSAL OF UNSUITABLE MATERIAL	CU YD	4227	3854				373		
20700220	POROUS GRANULAR EMBANKMENT	CU YD	580	207				373		
20700400	POROUS GRANULAR EMBANKMENT, SPECIAL	CU YD	934				934			
20700420	POROUS GRANULAR EMBANKMENT, SUBGRADE	CU YD	19864	19864						
20800150	TRENCH BACKFILL	CU YD	11504	11486	18					
* 21101615	TOPSOIL FURNISH AND PLACE, 4"	SQ YD	43086	43086						
* 21101645	TOPSOIL FURNISH AND PLACE, 12"	SQ YD	689	689						
* 21101805	COMPOST FURNISH AND PLACE, 2"	SQ YD	43775	43775						
* 25000210	SEEDING, CLASS 2A	ACRE	6.5	6.5						
* 25000312	SEEDING, CLASS 4A	ACRE	0.04	0.04						
* 25000400	NITROGEN FERTILIZER NUTRIENT	POUND	730	730						
* 25000500	PHOSPHORUS FERTILIZER NUTRIENT	POUND	730	730						
* 25000600	POTASSIUM FERTILIZER NUTRIENT	POUND	730	730						
NP 25000750	MOWING	ACRE	8.9	8.9						
* 25100630	EROSION CONTROL BLANKET	SQ YD	17776	17776						
* 25200110	SODDING, SALT TOLERANT	SQ YD	11485	11485						
* 25200200	SUPPLEMENTAL WATERING	UNIT	5259	5259						
28000200	EARTH EXCAVATION FOR EROSION CONTROL	CU YD	115	115						
28000250	TEMPORARY EROSION CONTROL SEEDING	POUND	976	976						
28000300	TEMPORARY DITCH CHECKS	EACH	53	53						
28000510	INLET FILTERS	EACH	111	111						
28001000	AGGREGATE (EROSION CONTROL)	TON	2	2						
28100107	STONE RIPRAP, CLASS A4	SQ YD	215	215	△					
28200200	FILTER FABRIC	SQ YD	178	178						
35102100	AGGREGATE BASE COURSE, TYPE B 9"	SQ YD	1333	1333						
35300500	PORTLAND CEMENT CONCRETE BASE COURSE 10"	SQ YD	1208	1208						
35501308	HOT-MIX ASPHALT BASE COURSE, 6"	SQ YD	192	192						
40300100	BITUMINOUS MATERIALS (PRIME COAT)	GALLON	5043	5043						
40600300	AGGREGATE (PRIME COAT)	TON	42	42						
40600635	LEVELING BINDER (MACHINE METHOD), N70	TON	729	729						
40603080	HOT-MIX ASPHALT BINDER COURSE, IL-19.0, N50	TON	203	203						
40603310	HOT-MIX ASPHALT SURFACE COURSE, MIX "C", N50	TON	189	189						
40603595	POLYMERIZED HOT-MIX ASPHALT SURFACE COURSE, MIX "F", N90	TON	850	850						
42000411	PORTLAND CEMENT CONCRETE PAVEMENT 9 1/2" (JOINTED)	SQ YD	6266	6266						
42000501	PORTLAND CEMENT CONCRETE PAVEMENT 10" (JOINTED)	SQ YD	29696	29696						
42001300	PROTECTIVE COAT	SQ YD	50778	50778						

● 100% Village of Gurnee - Y006
 * Specialty items
 NP= Non-participating

PLAN
 SUBMITTED BY _____ DATE _____
 PLOTTED BY _____
 CHECKED BY _____
 ALIGNED BY _____
 ANNOTATED BY _____
 CADD FILE NAME _____
 NO. _____

PROFILE
 SUBMITTED BY _____ DATE _____
 PLOTTED BY _____
 CHECKED BY _____
 GRADES CHECKED BY _____
 STRUCTURE NOTATION CHECKED BY _____
 NO. _____

REVISIONS	
NAME	DATE

ILLINOIS DEPARTMENT OF TRANSPORTATION
 U.S. 41 (SKOKIE HIGHWAY)
 AT IL ROUTE 132
 SUMMARY OF QUANTITIES
 SHEET 1 OF 9
 SCALE: NONE
 DATE: MAY 12, 2008
 DRAWN BY:
 CHECKED BY:

△ Rev. 7-15-08 Rev.

SUMMARY OF QUANTITIES

IDOT CODE NO.	ITEM DESCRIPTION	UNIT	URBAN TOTAL QUANTITIES	CMM		F BOI. FED./201 STATE		CMM BOI. FED./201 STATE		
				J000-2A	ROADWAY 60% STATE 40% GURNEE	X271-2A	Y007	Y031-1F	Y030-1E	J000-2A
52000110	PREFORMED JOINT STRIP SEAL	FOOT	99				99			
51204650	PILE SHOES	EACH	620				620			
52100540	ANCHOR BOLTS, 1 1/2"	EACH	120				120			
54002020	EXPANSION BOLTS 3/4 INCH	EACH	28	28						
54003000	CONCRETE BOX CULVERT	CU YD	15	15						
54010603	PRECAST CONCRETE BOX CULVERT 6' X 3'	FOOT	450	450						
54200427	PIPE CULVERTS, TYPE 1 RCCP 12"	FOOT	113	113						
54200430	PIPE CULVERTS, TYPE 1 RCCP 15"	FOOT	50	50						
54200439	PIPE CULVERTS, TYPE 1 RCCP 24"	FOOT	72	72						
54213657	PRECAST REINFORCED CONCRETE FLARED END SECTIONS 12"	EACH	5	5						
54213660	PRECAST REINFORCED CONCRETE FLARED END SECTIONS 15"	EACH	2	2						
54213669	PRECAST REINFORCED CONCRETE FLARED END SECTIONS 24"	EACH	2	2						
54214725	PRECAST REINFORCED CONCRETE FLARED END SECTIONS ELLIPTICAL, EQUIVALENT ROUND SIZE 30"	EACH	2	2						
550A0050	STORM SEWERS, CLASS A, TYPE 1 12"	FOOT	246	246						
550A0090	STORM SEWERS, CLASS A, TYPE 1 18"	FOOT	3	3						
550A0120	STORM SEWERS, CLASS A, TYPE 1 24"	FOOT	49	49						
550A0140	STORM SEWERS, CLASS A, TYPE 1 30"	FOOT	3	3						
550A0330	STORM SEWERS, CLASS A, TYPE 2 10"	FOOT	19			19				
550A0340	STORM SEWERS, CLASS A, TYPE 2 12"	FOOT	2434	2417		17				
550A0360	STORM SEWERS, CLASS A, TYPE 2 15"	FOOT	1010	1010						
550A0380	STORM SEWERS, CLASS A, TYPE 2 18"	FOOT	708	708						
550A0400	STORM SEWERS, CLASS A, TYPE 2 21"	FOOT	241	241						
550A0410	STORM SEWERS, CLASS A, TYPE 2 24"	FOOT	1131	1131						
550A0430	STORM SEWERS, CLASS A, TYPE 2 30"	FOOT	202	202						
550A0450	STORM SEWERS, CLASS A, TYPE 2 36"	FOOT	13	13						
550A0680	STORM SEWERS, CLASS A, TYPE 3 18"	FOOT	135	135						
550A0710	STORM SEWERS, CLASS A, TYPE 3 24"	FOOT	450	450						
550A0750	STORM SEWERS, CLASS A, TYPE 3 36"	FOOT	235	235						
55035600	STORM SEWERS, TYPE 2, REINFORCED CONCRETE ELLIPTICAL PIPE, SPAN 38, RISE 24	FOOT	109	109						
55035800	STORM SEWERS, TYPE 2, REINFORCED CONCRETE ELLIPTICAL PIPE, SPAN 53, RISE 34	FOOT	262	262						
55035900	STORM SEWERS, TYPE 2, REINFORCED CONCRETE ELLIPTICAL PIPE, SPAN 60, RISE 38	FOOT	157	157						
55100400	STORM SEWER REMOVAL 10"	FOOT	708	708						
55100500	STORM SEWER REMOVAL 12"	FOOT	2731	2731						
55100700	STORM SEWER REMOVAL 15"	FOOT	138	138						
55100900	STORM SEWER REMOVAL 18"	FOOT	990	990						
55101200	STORM SEWER REMOVAL 24"	FOOT	576	576						
55101400	STORM SEWER REMOVAL 30"	FOOT	1250	1250						
56400100	FIRE HYDRANTS TO BE MOVED	EACH	1	1						
58700300	CONCRETE SEALER	SQ FT	523			523				
59100100	GEOCOMPOSITE WALL DRAIN	SQ YD	2554			414	2140			
59300100	CONTROLLED LOW-STRENGTH MATERIAL	CU YD	119	119						

PLAN
 CHECKED BY: _____ DATE: _____
 PLOTTED BY: _____ DATE: _____
 NOTE BOOK NO. _____
 CADD FILE NAME: _____

PROFILE
 CHECKED BY: _____ DATE: _____
 PLOTTED BY: _____ DATE: _____
 NOTE BOOK NO. _____
 STRUCTURE NOTATIONS CHKD: _____

• 100% Village of Gurnee - Y006

REVISIONS	
NAME	DATE

ILLINOIS DEPARTMENT OF TRANSPORTATION
 U.S. 41 (SKOKIE HIGHWAY)
 AT IL ROUTE 132
 SUMMARY OF QUANTITIES
 SHEET 3 OF 9
 SCALE: NONE
 DATE: MAY 12, 2008
 DRAWN BY:
 CHECKED BY:

Rev. 7-15-08

Rev.

SUMMARY OF QUANTITIES

IDOT CODE NO.	ITEM DESCRIPTION	UNIT	URBAN TOTAL QUANTITIES	CMM		F 80% FED./20% STATE		CMM 80% FED./20% STATE		
				J000-2A ROADWAY 80% FED./20% STATE	ROADWAY 60% STATE 40% GURNEE	X271-2A BRIDGE	Y007 RETAINING WALLS	Y031-1F TRAFFIC SIGNALS	Y030-1E LIGHTING	J000-2A SIGNING
60100085	GEOTECHNICAL FABRIC FOR FRENCH DRAINS	SQ YD	4976	4976						
60107700	PIPE UNDERDRAINS 6"	FOOT	510	510						
60108200	PIPE UNDERDRAINS 6" (SPECIAL)	FOOT	39	39						
60109580	PIPE UNDERDRAINS FOR STRUCTURES 4"	FOOT	2215				2215			
60109582	PIPE UNDERDRAINS FOR STRUCTURES 6"	FOOT	261			261				
60200105	CATCH BASINS, TYPE A, 4'-DIAMETER, TYPE 1 FRAME, OPEN LID	EACH	8	8						
60201310	CATCH BASINS, TYPE A, 4'-DIAMETER, TYPE 20 FRAME AND GRATE	EACH	67	67						
60206905	CATCH BASINS, TYPE C, TYPE 1 FRAME, OPEN LID	EACH	9	9						
60207005	CATCH BASINS, TYPE C, TYPE 1 FRAME, CLOSED LID	EACH	8	8						
60208210	CATCH BASINS, TYPE C, TYPE 20 FRAME AND GRATE	EACH	2	2						
60209600	CATCH BASINS, TYPE C, SPECIAL, TYPE 1 FRAME, OPEN LID	EACH	3	3						
60218400	MANHOLES, TYPE A, 4'-DIAMETER, TYPE 1 FRAME, CLOSED LID	EACH	12	12						
60221000	MANHOLES, TYPE A, 5'-DIAMETER, TYPE 1 FRAME, OPEN LID	EACH	1	1						
60221100	MANHOLES, TYPE A, 5'-DIAMETER, TYPE 1 FRAME, CLOSED LID	EACH	14	14						
60223800	MANHOLES, TYPE A, 6'-DIAMETER, TYPE 1 FRAME, CLOSED LID	EACH	6	6						
60224446	MANHOLES, TYPE A, 7'-DIAMETER, TYPE 1 FRAME, CLOSED LID	EACH	2	2						
60226600	MANHOLES, DROP TYPE, 5'-DIAMETER, TYPE 1 FRAME, CLOSED LID	EACH	2	2						
60226730	MANHOLES, DROP TYPE, 6'-DIAMETER, TYPE 1 FRAME, CLOSED LID	EACH	1	1						
60247160	DRAINAGE STRUCTURES, TYPE 1 WITH TWO TYPE 20 FRAMES AND GRATES	EACH	10	10						
60247800	JUNCTION CHAMBER	EACH	2	2						
60250200	CATCH BASINS TO BE ADJUSTED	EACH	1	1						
60255500	MANHOLES TO BE ADJUSTED	EACH	6	6						
60500040	REMOVING MANHOLES	EACH	42	42						
60500050	REMOVING CATCH BASINS	EACH	57	57						
60500060	REMOVING INLETS	EACH	9	9						
60500105	FILLING MANHOLES	EACH	1	1						
60600605	CONCRETE CURB, TYPE B	FOOT	387	387						
60602200	CONCRETE GUTTER	FOOT	270	270						
60603800	COMBINATION CONCRETE CURB AND GUTTER, TYPE B-6.12	FOOT	2155	2155						
60605000	COMBINATION CONCRETE CURB AND GUTTER, TYPE B-6.24	FOOT	2828	2828						
60608250	COMBINATION CONCRETE CURB AND GUTTER, TYPE M-2.06	FOOT	66	66						
60618300	CONCRETE MEDIAN SURFACE, 4 INCH	SQ FT	8987	8987						
60618760	CONCRETE MEDIAN, TYPE M-4.12	SQ FT	184	184						
* 63000000	STEEL PLATE BEAM GUARD RAIL, TYPE A	FOOT	1700	1700						
* 63100045	TRAFFIC BARRIER TERMINAL, TYPE 2	EACH	3	3						
* 63100085	TRAFFIC BARRIER TERMINAL, TYPE 6	EACH	1	1						
* 63100167	TRAFFIC BARRIER TERMINAL, TYPE 1 (SPECIAL) TANGENT	EACH	2	2						
63200310	GUARDRAIL REMOVAL	FOOT	1154	1154						
63700155	CONCRETE BARRIER, SINGLE FACE, 32" INCH HEIGHT	FOOT	4620	4620						
63700255	CONCRETE BARRIER, DOUBLE FACE, 32" INCH HEIGHT	FOOT	3041	3041						

PLAN
NO. _____
DATE _____
BY _____
SUPERVISOR _____
PLOTTED _____
REVISIONS _____
CHECKED _____
CADD FILE NAME _____

PROFILE
NO. _____
DATE _____
BY _____
SUPERVISOR _____
PLOTTED _____
REVISIONS _____
CHECKED _____
STRUCTURE NOTATION CHECKED _____

REVISIONS	
NAME	DATE

ILLINOIS DEPARTMENT OF TRANSPORTATION
U.S. 41 (SKOKIE HIGHWAY)
AT IL ROUTE 132
SUMMARY OF QUANTITIES
SHEET 4 OF 9
SCALE: NONE
DATE: MAY 12, 2008
DRAWN BY:
CHECKED BY:

Rev. 7-15-08

SUMMARY OF QUANTITIES

IDOT CODE NO.	ITEM DESCRIPTION	UNIT	URBAN TOTAL QUANTITIES	CMM		F 80% FED./20% STATE		CMM 80% FED./20% STATE		
				J000-2A ROADWAY 80% FED./20% STATE	ROADWAY 60% STATE 40% GURNEE	X271-2A BRIDGE	Y007 RETAINING WALLS	Y031-1F TRAFFIC SIGNALS	Y030-1E LIGHTING	J000-2A SIGNING
81018900	CONDUIT PUSHED, 4" DIA., GALVANIZED STEEL	FOOT	1323					1023	300	
81300220	JUNCTION BOX, STAINLESS STEEL, ATTACHED TO STRUCTURE, 6" X 6" X 4"	EACH	16						16	
81300420	JUNCTION BOX, STAINLESS STEEL, ATTACHED TO STRUCTURE, 10" X 8" X 6"	EACH	3						3	
81400700	HANDHOLE, PORTLAND CEMENT CONCRETE	EACH	11					11		
81400720	DOUBLE HANDHOLE, PORTLAND CEMENT CONCRETE	EACH	6					6		
81701315	ELECTRIC CABLE IN CONDUIT, 600V (EPR-TYPE USE) 3-1/C NO. 2	FOOT	30000						30000	
81702110	ELECTRIC CABLE IN CONDUIT, 600 V (XLP-TYPE USE) 1/C NO. 10	FOOT	3210						3210	
81800300	AERIAL CABLE, 3-1/C NO. 2 WITH MESSENGER WIRE	FOOT	4300						4300	
81900200	TRENCH AND BACKFILL FOR ELECTRICAL WORK	FOOT	10143					2043	8100	
82102400	LUMINAIRE, SODIUM VAPOR, HORIZONTAL MOUNT, 400 WATT	EACH	64						64	
82107100	UNDERPASS LUMINAIRE, 70 WATT, HIGH PRESSURE SODIUM VAPOR	EACH	16						16	
83050770	LIGHT POLE, ALUMINUM, 47.5 FT. M.H., 10 FT. MAST ARM	EACH	64						64	
83600200	LIGHT POLE FOUNDATION, 24" DIAMETER	FOOT	735						735	
83600215	LIGHT POLE FOUNDATION, 24" DIAMETER, OFFSET	FOOT	60						60	
83800105	BREAKAWAY DEVICE, TRANSFORMER BASE, 11.5 INCH BOLT CIRCLE	EACH	52						52	
84200500	REMOVAL OF EXISTING LIGHTING UNIT, SALVAGE	EACH	10						10	
84200700	LIGHTING FOUNDATION REMOVAL	EACH	6						6	
84500110	REMOVAL OF LIGHTING CONTROLLER	EACH	1						1	
* 85700300	FULL-ACTUATED CONTROLLER AND TYPE V CABINET	EACH	1					1		
87301215	ELECTRIC CABLE IN CONDUIT, SIGNAL NO. 14 2C	FOOT	1882					1882		
87301225	ELECTRIC CABLE IN CONDUIT, SIGNAL NO. 14 3C	FOOT	3650		863			2787		
87301245	ELECTRIC CABLE IN CONDUIT, SIGNAL NO. 14 5C	FOOT	6307					6307		
87301255	ELECTRIC CABLE IN CONDUIT, SIGNAL NO. 14 7C	FOOT	704					704		
87301305	ELECTRIC CABLE IN CONDUIT, LEAD-IN, NO. 14 1 PAIR	FOOT	6004					6004		
87301805	ELECTRIC CABLE IN CONDUIT, SERVICE, NO. 6 2C	FOOT	166					166		
87502440	TRAFFIC SIGNAL POST, GALVANIZED STEEL, 10 FT.	EACH	1					1		
87502480	TRAFFIC SIGNAL POST, GALVANIZED STEEL 14 FT.	EACH	4					4		
87502500	TRAFFIC SIGNAL POST, GALVANIZED STEEL 16 FT.	EACH	4					4		
87502520	TRAFFIC SIGNAL POST, GALVANIZED STEEL 18 FT.	EACH	1					1		
87700220	STEEL MAST ARM ASSEMBLY AND POLE, 36 FT.	EACH	1					1		
87701200	STEEL MAST ARM ASSEMBLY AND POLE, 32 FT. (SPECIAL)	EACH	1					1		
87701220	STEEL MAST ARM ASSEMBLY AND POLE, 36 FT. (SPECIAL)	EACH	1					1		
87702310	STEEL MAST ARM ASSEMBLY AND POLE WITH DUAL MAST ARMS, 24 FT. AND 36 FT.	EACH	1					1		
87702980	STEEL COMBINATION MAST ARM ASSEMBLY AND POLE 50 FT.	EACH	1					1		
87800100	CONCRETE FOUNDATION, TYPE A	FOOT	24					24		
87800150	CONCRETE FOUNDATION, TYPE C	FOOT	4					4		
87800415	CONCRETE FOUNDATION, TYPE E 36-INCH DIAMETER	FOOT	90					90		
88030012	SIGNAL HEAD, L.E.D., 1-FACE, 1-SECTION, BRACKET MOUNTED	EACH	1					1		
88030020	SIGNAL HEAD, L.E.D., 1-FACE, 3-SECTION, MAST-ARM MOUNTED	EACH	12					12		
88030050	SIGNAL HEAD, L.E.D., 1-FACE, 3-SECTION, BRACKET MOUNTED	EACH	5					5		
88030070	SIGNAL HEAD, L.E.D., 1-FACE, 4-SECTION, BRACKET MOUNTED	EACH	1					1		
X8809045	COMBINATION SIGNAL HEAD, L.E.D., 2-FACE, 1-3 SECTION OPTICALLY PROGRAMMED, 1-3 SECTION, BRACKET MOUNTED	EACH	2					2		

* specialty items
 ■ 100% Burnee Y031-3D

PLAN
 SURVEYED
 PLOTTED
 CHECKED
 ALIGNED
 REVISIONS
 CADD FILE NAME
 NO.

PROFILE
 SURVEYED
 PLOTTED
 CHECKED
 GRADES
 STRUCTURE
 NOTATIONS
 CADD FILE NAME
 NO.

REVISIONS	
NAME	DATE

ILLINOIS DEPARTMENT OF TRANSPORTATION
 U.S. 41 (SKOKIE HIGHWAY)
 AT IL ROUTE 132
 SUMMARY OF QUANTITIES
 SHEET 6 OF 9
 SCALE: NONE
 DATE: MAY 12, 2008
 DRAWN BY:
 CHECKED BY:

7-15-08

SUMMARY OF QUANTITIES

IDOT CODE NO.	ITEM DESCRIPTION	UNIT	URBAN TOTAL QUANTITIES	CMM		80% FED./20% STATE		CMM 80% FED./20% STATE			
				J000-2A	ROADWAY 60% STATE 40% GURNEE	X271-2A BRIDGE	Y007 RETAINING WALLS	Y031-1E TRAFFIC SIGNALS	Y030-1E LIGHTING	J000-2A SIGNING	
88030080	SIGNAL HEAD, L E D, 1-FACE, 4-SECTION, MAST ARM MOUNTED	EACH	2						2		
88030210	SIGNAL HEAD, L E D, 2-FACE, 3-SECTION, BRACKET MOUNTED	EACH	2						2		
88030230	SIGNAL HEAD, L E D, 2-FACE, 1-3 SECTION, 1-4 SECTION, BRACKET MOUNTED	EACH	2						2		
88102710	PEDESTRIAN SIGNAL HEAD, L E D, 1-FACE, BRACKET MOUNTED	EACH	7						7		
88102740	PEDESTRIAN SIGNAL HEAD, L E D, 2-FACE, BRACKET MOUNTED	EACH	2						2		
88102760	PEDESTRIAN SIGNAL HEAD, L E D, 3-FACE, BRACKET MOUNTED	EACH	1						1		
88200110	TRAFFIC SIGNAL BACKPLATE, LOUVERED	EACH	19						19		
88500100	INDUCTIVE LOOP DETECTOR	EACH	14						14		
88600100	DETECTOR LOOP, TYPE I	FOOT	67						67		
88600300	DETECTOR LOOP, TYPE III	FOOT	1021						1021		
88700200	LIGHT DETECTOR	EACH	5						5		
88700300	LIGHT DETECTOR AMPLIFIER	EACH	2						2		
88800100	PEDESTRIAN PUSH-BUTTON	EACH	10						10		
89502375	REMOVE EXISTING TRAFFIC SIGNAL EQUIPMENT	EACH	1						1		
89502380	REMOVE EXISTING HANDHOLE	EACH	8						8		
89502385	REMOVE EXISTING CONCRETE FOUNDATION	EACH	9						9		
A2002816	TREE, CATALPA SPECIOSA (NORTHERN CATALPA), 2" CALIPER, BALLED AND BURLAPPED	EACH	14	14							
A2004716	TREE, GLEDITSIA TRIANCANTHOS INERMIS SHADEMASTER (SHADEMASTER THORNLESS COMMON HONEY LOCUST), 2" CALIPER, BALLED AND BURLAPPED	EACH	14	14							
A2005016	TREE, GYMNOCLADUS, DIOICUS (KENTUCKY COFFEETREE), 2" CALIPER, BALLED AND BURLAPPED	EACH	14	14							
A2006716	TREE, QUERCUS MACROCARPA (BUR OAK), 2" CALIPER, BALLED AND BURLAPPED	EACH	14	14							
A2016616	TREE, QUERCUS ELLIPSOIDALIS (HILL'S OAK), 2" CALIPER, BALLED AND BURLAPPED	EACH	14	14							
E20200G1	VINE-PARTHENOCISSUS QUINQUEFOLIA (VIRGINIA CREEPER), 1-GALLON POT	EACH	520	520							
E20210G1	VINE-PARTHENOCISSUS QUINQUEFOLIA ENGELMANNII (ENGELMANNII VIRGINIA CREEPER), 1-GALLON POT	EACH	185	185							
K1005481	SHREDDED BARK MULCH 3"	SQ YD	689	689							
X0300057	MANHOLES, TYPE A, 6'-DIAMETER, TYPE 1 FRAME, CLOSED LID, RESTRICTOR PLATE	EACH	3	3							
X0301407	PERENNIAL PLANTS, GALLON POT	UNIT	8	8							
X0321193	TEMPORARY CATCH BASINS	EACH	3	3							
X0321781	MECHANICAL SPLICE	EACH	22			22					
X0322035	STORM SEWER (WATER MAIN REQUIREMENTS) 18 INCH	FOOT	135		135						
X0322054	REMOVE PRECAST FLARED END SECTIONS	EACH	1	1							
X0322125	STORM SEWER (WATER MAIN REQUIREMENTS) 24 INCH	FOOT	50		50						
X0322127	STORM SEWER (WATER MAIN REQUIREMENTS) 30 INCH	FOOT	342		342						
X0322400	PILE EXTRACTION	EACH	11			11					
X0322643	STORM SEWER (WATER MAIN REQUIREMENTS) SPAN 68, RISE 43	FOOT	150		150						
X0322782	SANITARY SEWER, PVC (D3034) SDR 26, 8"	FOOT	60		60						
X0323003	TEMPORARY ELECTRIC SERVICE INSTALLATION	EACH	1						1		
X0322256	TEMPORARY INFORMATIONAL SIGNING	SQ FT	864	864							
X0323045	STONE OUTCROPPING	SQ FT	37	37							
X0323236	TEMPORARY INLET	EACH	1	1							
X0323426	SEDIMENT CONTROL, DRAINAGE STRUCTURE INLET FILTER CLEANING	EACH	1332	1332							

PLAN
SUBMITTED BY
DATE
PLOTTED BY
CHECKED BY
ALIGNED BY
CADD FILE NAME
NO.

PROFILE
SUBMITTED BY
DATE
PLOTTED BY
CHECKED BY
STRUCTURE NOTATION CHECKED BY
NO.

* Specialty items
 ■ 100% Gurnee Y031-3D
 ● 100% Gurnee Y006

REVISIONS	
NAME	DATE

ILLINOIS DEPARTMENT OF TRANSPORTATION
 U.S. 41 (SKOKIE HIGHWAY)
 AT IL ROUTE 132
 SUMMARY OF QUANTITIES
 SHEET 7 OF 9
 SCALE: NONE
 DATE: MAY 12, 2008
 DRAWN BY:
 CHECKED BY:

SUMMARY OF QUANTITIES

IDOT CODE NO.	ITEM DESCRIPTION	UNIT	URBAN TOTAL QUANTITIES	CMM		F 801.FED./201.STATE		CMM 801.FED./201.STATE		
				J000-2A		X271-2A	Y007	Y031-1F	Y030-1E	J000-2A
				ROADWAY 801.FED./201.STATE	ROADWAY 60% STATE 40% GURNEE	BRIDGE	RETAINING WALLS	TRAFFIC SIGNALS	LIGHTING	SIGNING
Z0007601	BUILDING REMOVAL NO. 1	L SUM	1	1						
Z0007602	BUILDING REMOVAL NO. 2	L SUM	1	1						
Z0013798	CONSTRUCTION LAYOUT	L SUM	1	1						
Z0018800	DRAINAGE SYSTEM	L SUM	1		1					
* X0325047	IMPACT ATTENUATORS (FULLY REDIRECTIVE, ^(RESETTABLE) TEST LEVEL 3	EACH	6	6						
* Z0030260	IMPACT ATTENUATORS, TEMPORARY (FULLY REDIRECTIVE, NARROW), TEST LEVEL 3	EACH	12	12						
* Z0030330	IMPACT ATTENUATORS, RELOCATE (FULLY REDIRECTIVE), TEST LEVEL 3	EACH	9	9						
Z0048665	RAILROAD PROTECTIVE LIABILITY INSURANCE	L SUM	1	1						
Z0067500	STEEL CASINGS 16"	FOOT	60		60					
Z0067700	STEEL CASINGS 20"	FOOT	20		20					
o Z0076600	TRAINEES	HOUR	7500	7500						
51200960	FURNISHING METAL SHELL PILES 14" x 0.375"	FOOT	14959			14959				
* X0326148	TEMPORARY WOOD POLE, 60 FT., CLASS 4, 15 FT. MAST ARM	EACH	16						16	
* X0326149	UNIT DUCT, WITHOUT CABLE, IN TRENCH 2"	FOOT	8100						8100	
X0326150	ERECTING MODULAR EXPANSION JOINT 6"	FOOT	99			99				
X3120050	STABILIZED SUBBASE - HOT-MIX ASPHALT, 4 1/2"	SQ YD	48941	48941						
X6370015	CONCRETE BARRIER, SPECIAL, 32" HEIGHT	FOOT	649	649						
X0326151	CONCRETE ACCENT PAVER, REMOVE AND STORE	SQ FT	156	156						
X0326152	CONCRETE ACCENT PAVER RE-INSTALLATION	SQ FT	156	156						
X0326153	STORM SEWERS, TYPE 1, REINFORCED CONCRETE ELLIPTICAL PIPE, SPAN 42, RISE 27	FOOT	164	164						
X0326154	STORM SEWER (WATER MAIN REQUIREMENTS) 72 INCH	FOOT	599		599					
X0326155	STORM SEWER (WATER MAIN REQUIREMENTS) 78 INCH	FOOT	543		543					
* X8770440	STEEL COMBINATION MAST ARM ASSEMBLY AND POLE WITH DUAL MAST ARMS, 28 FT. ^{AND} 34 FT.	EACH	1						1	
* X8808118	OPTICALLY PROGRAMMED SIGNAL HEAD, L E D, 1-FACE, 3-SECTION, BRACKET MOUNTED	EACH	3						3	
* X8808120	OPTICALLY PROGRAMMED SIGNAL HEAD, L E D, 1-FACE, 3-SECTION, MAST ARM MOUNTED	EACH	5						5	
X0326156	SANITARY SEWER, PVC (D3034) SDR 26, 12"	FOOT	20		20					
X0326157	TEMPORARY ELECTRIC SERVICE DISCONNECTION	EACH	1						1	
X0326158	ERECTING ^{HIGH LOAD MULTI-ROTATION} BEARINGS, GUIDED EXPANSION 250K	EACH	20			20				
X0326159	ERECTING ^{HIGH LOAD MULTI-ROTATION} BEARINGS, GUIDED EXPANSION, 850K	EACH	10			10				
X0326160	POROUS GRANULAR EMBANKMENT, SUBGRADE (SPECIAL)	CU YD	829	829						
40000895	CONSTRUCTING TEST STRIP	EACH	2	2						
54247100	GRATING FOR CONCRETE FLARED END SECTION 16"	EACH	2	2						
54247130	GRATING FOR CONCRETE FLARED END SECTION 24"	EACH	2	2						
X5421472	PRECAST REINFORCED CONCRETE FLARED END SECTIONS - ELLIPTICAL, EQUIVALENT ROUND - SIZE 33"	EACH	2	2						
X5424815	GRATING FOR CONCRETE FLARED END SECTION EQUIVALENT ROUND - SIZE 33"	EACH	2	2						
81018700	CONDUIT PUSHED, 3" DIA., GALVANIZED STEEL	FOOT	160						160	
81000900	CONDUIT IN TRENCH, 3/2" DIA., GALVANIZED STEEL	FOOT	13						13	
81400100	HANDHOLE	EACH	12						12	
81400300	DOUBLE HANDHOLE	EACH	5						5	
87502510	TRAFFIC SIGNAL POST, GALVANIZED STEEL 17 FT.	EACH	4						4	
87700190	STEEL MAST ARM ASSEMBLY AND POLE, 30 FT.	EACH	1						1	
87701230	STEEL MAST ARM ASSEMBLY AND POLE, 38 FT. (SPECIAL)	EACH	1						1	
X8770230	STEEL MAST ARM ASSEMBLY AND POLE WITH DUAL MAST ARMS, 24 FT #36 FT. (SPECIAL)	EACH	1						1	
X0323670	PREFORMED DETECTOR LOOP	FOOT	1021						1021	
X8620020	UNINTERRUPTABLE POWER SUPPLY	EACH	1						1	
85000200	MAINTENANCE OF EXISTING TRAFFIC SIGNAL INSTALLATION	EACH	1						1	
X6021040	CATCH BASINS, TYPE C, SPECIAL, TYPE 20 FRAME AND GRATE	EACH	2	2						
60100060	CONCRETE HEADWALL FOR PIPE DRAINS	EACH	3	3						

PLAN
 SURVEYED
 PLOTTED
 CHECKED
 NO. _____
 DATE _____
 BY _____
 NOTE BOOK NO. _____
 FILE NAME _____

PROFILE
 SURVEYED
 PLOTTED
 CHECKED
 NO. _____
 DATE _____
 BY _____
 NOTE BOOK NO. _____
 FILE NAME _____

• 100% Village of Gurnee - Y006

REVISIONS	
NAME	DATE

ILLINOIS DEPARTMENT OF TRANSPORTATION
 U.S. 41 (SKOKIE HIGHWAY)
 AT IL ROUTE 132
 SUMMARY OF QUANTITIES
 SHEET 9 OF 9

SCALE: NONE
 DATE: MAY 12, 2008
 DRAWN BY:
 CHECKED BY:

F.A.P. RTE.	SECTION	COUNTY	TOTAL SHEETS	SHEET NO.
346	LAKE	409	44	
STA.	TO STA.			
FED. ROAD DIST. NO. D-91-404-99	ILLINOIS	FED. AID PROJECT	CONTRACT # 60826	
* 125X-HB-(1&2) R-1				

TRAFFIC SIGNAL LEGEND

- | | | | | | |
|--|--|--------------------------------------|--|--|--|
| | | CONTROLLER | | | DETECTOR LOOP |
| | | SERVICE INSTALLATION | | | CAST IRON JUNCTION BOX |
| | | SIGNAL HEAD | | | EMERGENCY VEHICLE SYSTEM DETECTOR |
| | | SIGNAL HEAD WITH BACKPLATE | | | CONFIRMATION BEACON |
| | | SIGNAL HEAD, PEDESTRIAN | | | SIGNAL HEAD OPTICALLY PROGRAMMED |
| | | SIGNAL POST | | | CONDUIT SPLICE |
| | | MAST ARM ASSEMBLY AND POLE, STEEL | | | WOOD POLE |
| | | MAST ARM ASSEMBLY AND POLE, ALUMINUM | | | RACEWAY FOR MAGNETIC DETECTOR, TYPE I OR TYPE II |
| | | COMMON TRENCH | | | VEHICLE DETECTOR, NON COMPENSATED, MAGNETIC TYPE |
| | | UNIT DUCT | | | RAILROAD CONTROL CABINET |
| | | HANDHOLE | | | TELEPHONE |
| | | HEAVY DUTY HANDHOLE | | | HORIZONTALLY MOUNTED |
| | | DOUBLE HANDHOLE | | | UNINTERRUPTIBLE POWER SUPPLY |
| | | G.S. CONDUIT IN TRENCH OR PUSHED | | | COMBINATION MAST ARM ASSEMBLY AND POLE STEEL |
| | | PEDESTRIAN PUSH-BUTTON DETECTOR | | | |

THE TRAFFIC SIGNAL CONTROLLER SHALL BE NTCIP CONTROLLER THAT WILL ALLOW THE TRAFFIC SIGNAL TO BE ADDED TO THE LAKE COUNTY PASSAGE SYSTEM

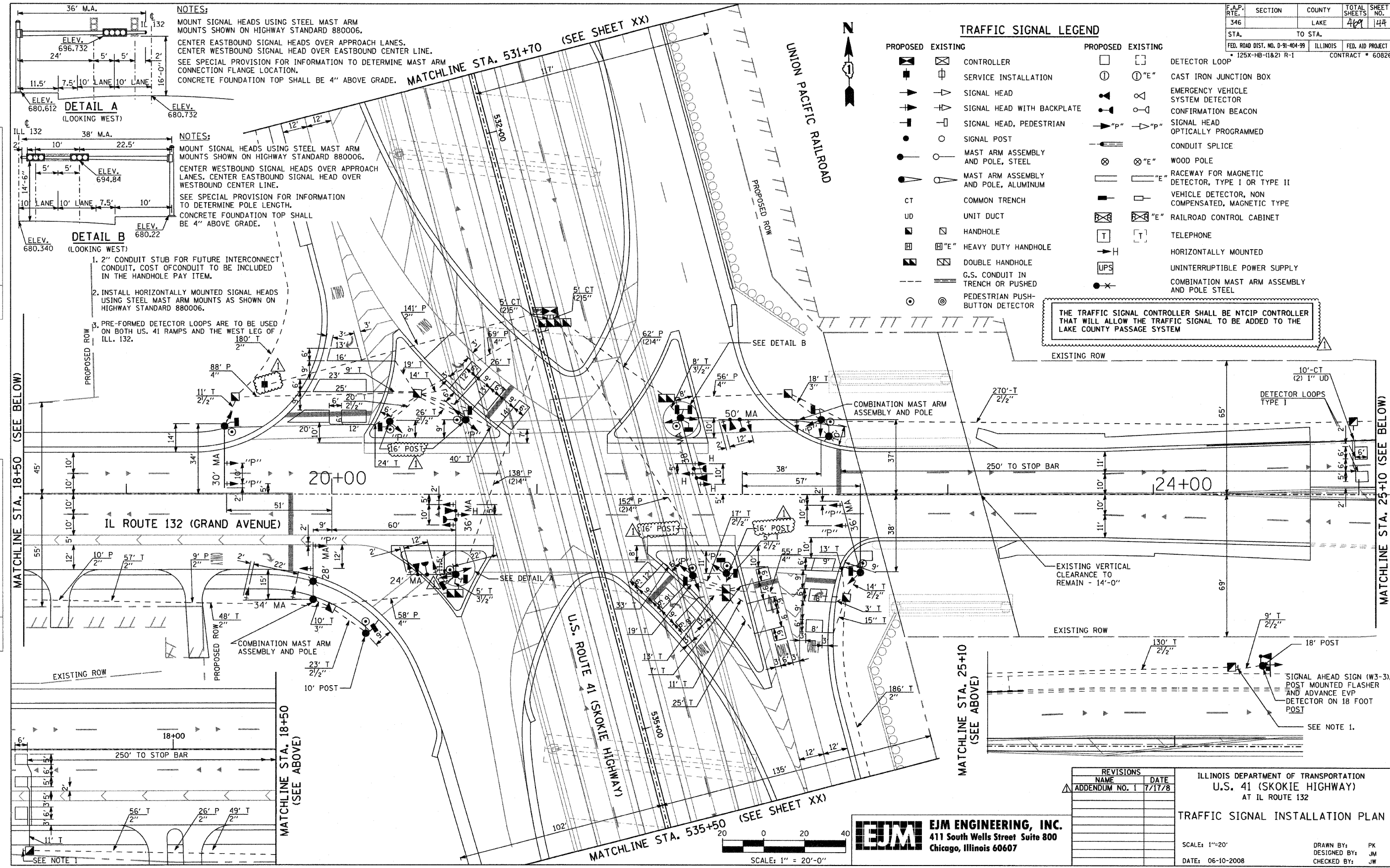
NOTES:
 MOUNT SIGNAL HEADS USING STEEL MAST ARM MOUNTS SHOWN ON HIGHWAY STANDARD 880006.
 CENTER EASTBOUND SIGNAL HEADS OVER APPROACH LANES.
 CENTER WESTBOUND SIGNAL HEAD OVER EASTBOUND CENTER LINE.
 SEE SPECIAL PROVISION FOR INFORMATION TO DETERMINE MAST ARM CONNECTION FLANGE LOCATION.
 CONCRETE FOUNDATION TOP SHALL BE 4" ABOVE GRADE.

NOTES:
 MOUNT SIGNAL HEADS USING STEEL MAST ARM MOUNTS SHOWN ON HIGHWAY STANDARD 880006.
 CENTER WESTBOUND SIGNAL HEADS OVER APPROACH LANES.
 CENTER EASTBOUND SIGNAL HEAD OVER WESTBOUND CENTER LINE.
 SEE SPECIAL PROVISION FOR INFORMATION TO DETERMINE POLE LENGTH.
 CONCRETE FOUNDATION TOP SHALL BE 4" ABOVE GRADE.

- 2" CONDUIT STUB FOR FUTURE INTERCONNECT CONDUIT, COST OF CONDUIT TO BE INCLUDED IN THE HANDHOLE PAY ITEM.
- INSTALL HORIZONTALLY MOUNTED SIGNAL HEADS USING STEEL MAST ARM MOUNTS AS SHOWN ON HIGHWAY STANDARD 880006.
- PRE-FORMED DETECTOR LOOPS ARE TO BE USED ON BOTH US. 41 RAMPS AND THE WEST LEG OF ILL. 132.

PLAN	DATE	BY
REVISIONS		
NO.		

PROFILE	DATE	BY
REVISIONS		
NO.		



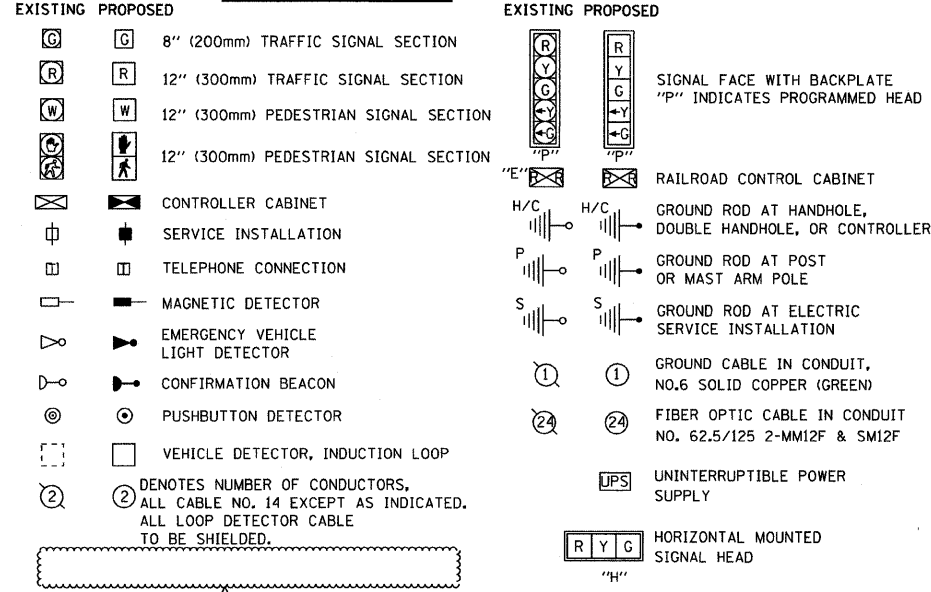
EJM ENGINEERING, INC.
 411 South Wells Street Suite 800
 Chicago, Illinois 60607

REVISIONS	
NAME	DATE
ADDENDUM NO. 1	7/17/8

ILLINOIS DEPARTMENT OF TRANSPORTATION
 U.S. 41 (SKOKIE HIGHWAY)
 AT IL ROUTE 132
TRAFFIC SIGNAL INSTALLATION PLAN
 SCALE: 1"=20'
 DATE: 06-10-2008
 DRAWN BY: PK
 DESIGNED BY: JM
 CHECKED BY: JW

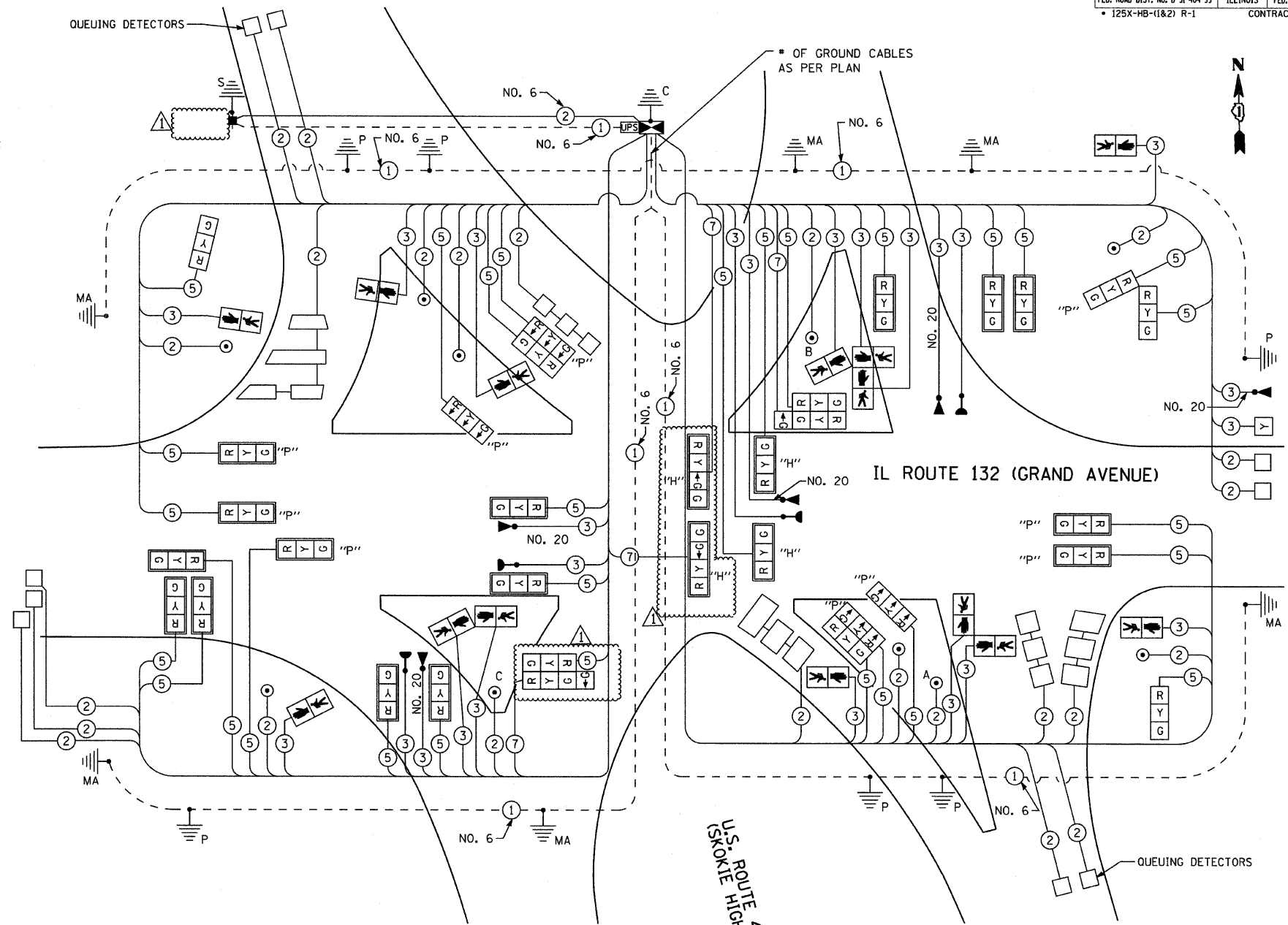
F.A.P. RTE.	SECTION	COUNTY	TOTAL SHEETS	SHEET NO.
346	LAKE	LAKE	469	146
STA.	TO STA.			
FED. ROAD DIST. NO. D-91-404-99	ILLINOIS	FED. AID PROJECT		
* 125X-HB-(1&2) R-1		CONTRACT # 60826		

CABLE PLAN LEGEND



② DENOTES NUMBER OF CONDUCTORS, ALL CABLE NO. 14 EXCEPT AS INDICATED. ALL LOOP DETECTOR CABLE TO BE SHIELDED.

THE TRAFFIC SIGNAL CONTROLLER SHALL BE NTCIP CONTROLLER THAT WILL ALLOW THE TRAFFIC SIGNAL TO BE ADDED TO THE LAKE COUNTY PASSAGE SYSTEM



CABLE PLAN
NOT TO SCALE

PEDESTRIAN PUSHBUTTON "A" SHALL PLACE A CALL IN PHASES 1 & 4
PEDESTRIAN PUSHBUTTON "B" SHALL PLACE A CALL IN PHASES 3 & 4
PEDESTRIAN PUSHBUTTON "C" SHALL PLACE A CALL IN PHASES 1 & 2

NOTE:
1. INSTALL HORIZONTALLY MOUNTED SIGNAL HEADS USING STEEL MAST ARM MOUNTS AS SHOWN ON HIGHWAY STANDARD 880006.
2. 3/C NO 20 TWISTED SHIELDED FOR THE LIGHT DETECTOR SHALL COMPLY WITH EQUIPMENT MANUFACTURER RECOMMENDATION.

REVISIONS	
NAME	DATE
ADDENDUM NO. 1	7/17/8

ILLINOIS DEPARTMENT OF TRANSPORTATION
U.S. 41 (SKOKIE HIGHWAY)
AT IL ROUTE 132

CABLE PLAN

SCALE: NONE
DATE: 06-10-2008
DRAWN BY: PK
DESIGNED BY: JM
CHECKED BY: JW

PLAN	SURVEYED	DATE

PROFILE	SURVEYED	DATE

I.D.O.T. TRAFFIC SIGNAL INSTALLATION ELECTRICAL SERVICE REQUIREMENTS					
TYPE	NO. OF LAMPS	WATTAGE	% OPERATIONS	TOTAL WATTAGE	
		INCAND.	LED		
SIGNAL (RED)	32	135	17	0.50	272
(YELLOW)	32	135	25	0.25	200
(GREEN)	36	135	15	0.25	135
PED. SIGNAL	14	90	25	1.00	350
CONTROLLER	1	100	100	1.00	100
FLASHER	1	25	0.50		12.50

ENERGY COSTS TO: TOTAL = 1069.50
ILLINOIS DEPARTMENT OF TRANSPORTATION
DIVISION OF HIGHWAY/DISTRICT I
201 WEST CENTER COURT/SCHAUMBURG, ILLINOIS 60196-1096
ENERGY SUPPLY: CONTACT: DOTI PROSEN
PHONE: (847) 816-5529
COMPANY: COMED

FOUNDATION (DEPTH)	FT. (m)	CABLE SLACK	FT. (m)	VERTICAL	FT. (m)
TYPE A - POST	4 (1.2)	HANDHOLE	6.5 (2.0)	ALL FOUNDATIONS	3.5 (1.0)
D - CONTROLLER	4 (1.2)	DOUBLE HANDHOLE	13 (4.0)	MAST ARM (L) POLE	20' + L-2 = (6mH-0.6m)
E - MAST ARM POLE	2 (1.0)	SIGNAL POST	2 (1.0)	BRACKET MOUNTED	13 (4.0)
24" (600mm)	10 (3.0)	CONTROLLER CAB.	1 (0.5)	PED. PUSHBUTTON	4 (1.2)
30" (750mm)	15 (4.6)	FIBER OPTIC	13 (4.0)	ELECTRIC SERVICE	13.5 (4.1)
36" (900mm)	15 (4.6)	ELECTRIC SERVICE	1 (0.5)	SERVICE TO GROUND	13.5 (4.1)
		GROUND CABLE	1 (0.5)	POST MOUNTED	6 (1.8)

EJM ENGINEERING, INC.
411 South Wells Street Suite 800
Chicago, Illinois 60607

SCHEDULE OF QUANTITIES

F.A.P. RTE.	SECTION	COUNTY	TOTAL SHEETS	SHEET NO.
346		LAKE	469	147
STA. _____ TO STA. _____				
FED. ROAD DIST. NO. D-91-404-99			ILLINOIS	FED. AID PROJECT
• 125X-HB-(1&2) R-1				CONTRACT • 60826

DESCRIPTION	QUANTITY		EMERGENCY VEHICLE PRE-EMPTION SYSTEM
	GRAND TOTAL	SIGNAL	
SERVICE INSTALLATION - GROUND MOUNTED	1	1	
CONDUIT IN TRENCH, 2" DIA., GALVANIZED STEEL	1186	1186	
CONDUIT IN TRENCH, 2 1/2" DIA., GALVANIZED STEEL	499	499	
CONDUIT IN TRENCH, 3" DIA., GALVANIZED STEEL	24	24	
CONDUIT IN TRENCH, 3 1/2" DIA., GALVANIZED STEEL	13	13	
CONDUIT IN TRENCH, 5" DIA., GALVANIZED STEEL	20	20	
CONDUIT PUSHED, 2" DIA., GALVANIZED STEEL	176	176	
CONDUIT PUSHED, 4" DIA., GALVANIZED STEEL	1030	1030	
HANDHOLE	12	12	
DOUBLE HANDHOLE	5	5	
TRENCH AND BACKFILL FOR ELECTRICAL WORK	2014	2014	
FULL-ACTUATED CONTROLLER AND TYPE V CABINET	1	1	
ELECTRIC CABLE IN CONDUIT, GROUNDING, NO. 6 1/C	1506	1506	
ELECTRIC CABLE IN CONDUIT, SIGNAL NO. 14 2/C	1882	1882	
ELECTRIC CABLE IN CONDUIT, SIGNAL NO. 14 3/C	3650	2787	863
ELECTRIC CABLE IN CONDUIT, SIGNAL NO. 14 5/C	6100	6100	
ELECTRIC CABLE IN CONDUIT, SIGNAL NO. 14 7/C	720	720	
ELECTRIC CABLE IN CONDUIT, LEAD-IN NO. 14 1 PAIR	5850	5850	
ELECTRIC CABLE IN CONDUIT, SERVICE, NO. 6 2C	166	166	
ELECTRIC CABLE IN CONDUIT, NO. 20 3/C, TWISTED, SHIELDED	1455		1455
TRAFFIC SIGNAL POST, GALVANIZED STEEL, 10 FT	1	1	
TRAFFIC SIGNAL POST, GALVANIZED STEEL, 16 FT	4	4	
TRAFFIC SIGNAL POST, GALVANIZED STEEL, 18 FT	1	1	
STEEL MAST ARM ASSEMBLY AND POLE, 30 FT.	1	1	
STEEL MAST ARM ASSEMBLY AND POLE, 36 FT.	1	1	
STEEL MAST ARM ASSEMBLY AND POLE, 38 FT. (SPECIAL)	1	1	
STEEL COMBINATION MAST ARM ASSEMBLY AND POLE, 50 FT.	1	1	
STEEL MAST ARM ASSEMBLY AND POLE WITH DUAL MAST ARMS, 24 FT & 36 FT (SPECIAL)	1	1	
STEEL COMBINATION MAST ARM ASSEMBLY AND POLE WITH DUAL MAST ARMS, 28 FT. & 34 FT.	1	1	
CONCRETE FOUNDATION, TYPE A	24	24	
CONCRETE FOUNDATION, TYPE C	4	4	
CONCRETE FOUNDATION, TYPE E 36-INCH DIAMETER	90	90	
SIGNAL HEAD, LED, 1-FACE, 1-SECTION, BRACKET MOUNTED	1	1	
SIGNAL HEAD, LED, 1-FACE, 3-SECTION, MAST ARM MOUNTED	12	12	
SIGNAL HEAD, LED, 1-FACE, 3-SECTION, BRACKET MOUNTED	3	3	
SIGNAL HEAD, LED, 1-FACE, 4-SECTION, BRACKET MOUNTED	0	0	
SIGNAL HEAD, LED, 1-FACE, 4-SECTION, MAST ARM MOUNTED	2	2	
COMBINATION SIGNAL HEAD, LED, 2-FACE, 1-3 SECTION OPTICALLY PROGRAMMED, 1-3 SECTION, BRACKET MOUNTED	2	2	
SIGNAL HEAD, LED, 2-FACE, 1-3 SECTION, 1-4 SECTION, BRACKET MOUNTED	2	2	
OPTICALLY PROGRAMMED SIGNAL HEAD, LED, 1-FACE, 3-SECTION, BRACKET MOUNTED	3	3	
OPTICALLY PROGRAMMED SIGNAL HEAD, LED, 1-FACE, 3-SECTION, MAST ARM MOUNTED	5	5	
PEDESTRIAN SIGNAL HEAD, LED, 1-FACE, BRACKET MOUNTED	7	7	
PEDESTRIAN SIGNAL HEAD, LED, 2-FACE, BRACKET MOUNTED	2	2	
PEDESTRIAN SIGNAL HEAD, LED, 3-FACE, BRACKET MOUNTED	1	1	
TRAFFIC SIGNAL BACKPLATE, LOUVERED	19	19	
INDUCTIVE LOOP DETECTOR	14	14	
DETECTOR LOOP, TYPE 1	67	67	
PREFORMED DETECTOR LOOP	1021	1021	
LIGHT DETECTOR	5		5
LIGHT DETECTOR AMPLIFIER	2		2
PEDESTRIAN PUSH-BUTTON	10	10	
REMOVE EXISTING TRAFFIC SIGNAL EQUIPMENT	1	1	
REMOVE EXISTING HANDHOLE	8	8	
REMOVE EXISTING CONCRETE FOUNDATION	9	9	
UNINTERRUPTIBLE POWER SUPPLY	1	1	
MAINTENANCE OF EXISTING TRAFFIC SIGNAL INSTALLATION	1	1	

NOTE:
QUANTITIES FOR THE EMERGENCY VEHICLE PRE-EMPTION SYSTEM SHALL BE PAID FOR BY THE VILLAGE OF GURNEE.

PLAN

DATE _____ BY _____

REVISIONS

NO. _____ DATE _____

CHECKED BY _____

DATE _____ BY _____

NO. _____

PROFILE

DATE _____ BY _____

REVISIONS

NO. _____ DATE _____

CHECKED BY _____

DATE _____ BY _____

NO. _____

REVISIONS	
NAME	DATE
ADDENDUM NO. 1	7/17/8

ILLINOIS DEPARTMENT OF TRANSPORTATION
U.S. 41 (SKOKIE HIGHWAY)
AT IL ROUTE 132

SCHEDULE OF QUANTITIES

SCALE: NONE
DATE: 06-10-2008

DRAWN BY: PK
DESIGNED BY: JM
CHECKED BY: JW

EJM **EJM ENGINEERING, INC.**
411 South Wells Street Suite 800
Chicago, Illinois 60607

STATE OF ILLINOIS
DEPARTMENT OF TRANSPORTATION

ROUTE NO.	SECTION	COUNTY	SHEETS	SHEET NO.
346	*	LAKE	469	171
FED. ROAD DIST. NO.	ILLINOIS	FED. AID PROJECT		
* 125X-HB-(1&2) R-1			CONTRACT # 60826	

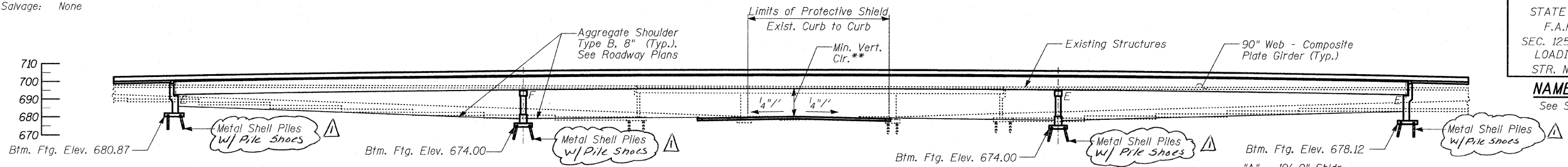
Benchmark: BM #6 - Square cut in base of L.P. at N.E. corner of IL Route 132 and Magnolia (Speedway) 45.14' LT, Sta. 32+13.24 (IL 132 E.B. @), Elev. 696.47.

Existing Structure: Each existing superstructure consists of a 208'-5 1/4" (Bk. to Bk. abutments) by 41'-6" wide reinforced concrete deck supported on six continuous wide flange beams. The superstructure rests on two piers and two closed abutments, all of reinforced concrete, and founded on timber piles. Existing structure numbers are 049-0030 & 049-0031. See staging plan for staging details.

Salvage: None

STATION 533+64.76
BUILT 200_ BY
STATE OF ILLINOIS
F.A.P. RT. 346
SEC. 125X-HB-(1&2)R-1
LOADING HS20-44
STR. NO. 049-0209

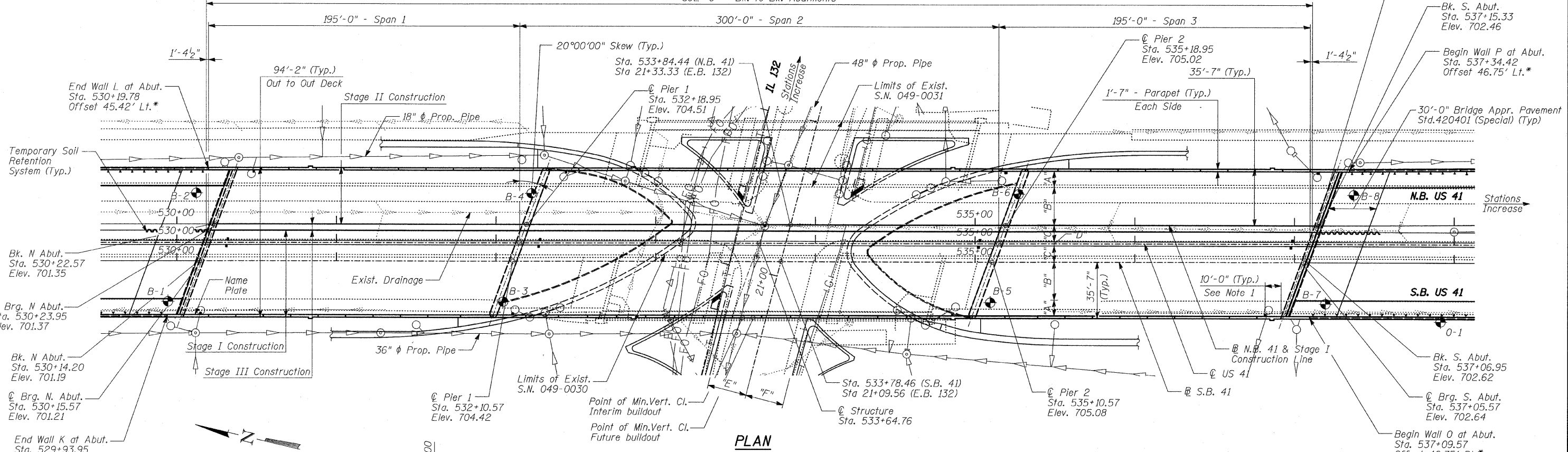
NAME PLATE
See Std. 515001



NOTES:

- 1. Scuppers are placed 10'-0" from the face of piers and abutments.

- "A" - 10'-0" Shldr.
- "B" - 2 Lanes @ 12'-0" = 24'-0"
- "C" - 10'-2" Shldr.
- "D" - 2'-8" Median Barrier
- "E" - 2 W.B. Lanes @ 12'-0" = 24'-0"
- "F" - 2 E.B. Lanes @ 12'-0" = 24'-0"

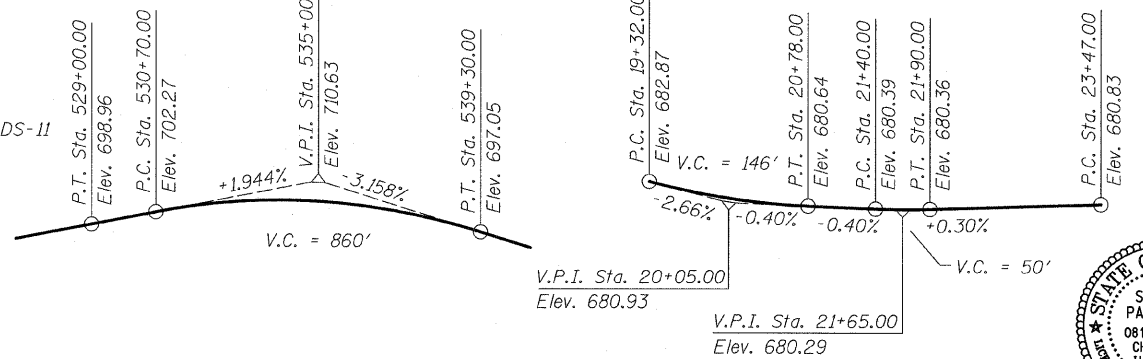


LEGEND

- - Manhole
- - Catch Basin
- - Soil Boring
- Prop. Drain Pipe
- - Drainage Scupper - Type DS-II

TYLIN INTERNATIONAL

DESIGNED	- SP
CHECKED	- AD
DRAWN	- CM
CHECKED	- AD



APPROVED
FOR STRUCTURAL ADEQUACY ONLY

Ralph E. Anderson (PE)
ENGINEER OF BRIDGES AND STRUCTURES



Signed *SP*
Spiros Pantazis, S.E., Il. Lic. No. 081-006448 Expires 11-30-2008.
Date 5/14/08

BRIDGE
GENERAL PLAN & ELEVATION,
STA 533+64.76

FAP 346 (U.S. ROUTE 41 - SKOKIE HIGHWAY) OVER ILLINOIS ROUTE 132
SECTION 125X-HB-(1&2)R-1
LAKE COUNTY
S.N. 049-0209

Rev. 7-17-08

GENERAL NOTES

1. Fasteners shall be AASHTO M164 Type 1, mechanically galvanized bolts. Bolts $\frac{1}{8}$ in. ϕ , holes $\frac{15}{16}$ in. ϕ , unless otherwise noted.
- * 2. Calculated weight of Structural Steel =
Grade 50 = 3,572,300 lbs.
Grade 36 = 180,150 lbs. * For Information Only
3. No field welding is permitted except as specified in the contract documents.
4. Reinforcement bars shall conform to the requirements of ASTM A 706 Gr 60 (IL Modified). See Special Provisions.
5. Reinforcement bars designated (E) shall be epoxy coated.
6. If the Contractor elects to use cantilever forming brackets on the exterior beams or girders, the brackets shall be placed at the same locations as required for the hardwood blocks in Article 503.06(b) of the Standard Specifications. If additional cantilever forming brackets are required, hardwood blocking shall be wedged between the exterior and first interior beam at each of these additional bracket locations.
7. Bearing seat surfaces shall be constructed or adjusted to their designated elevations within a tolerance of $\frac{1}{8}$ inch (0.01 ft.). Adjustment shall be made either by grinding the surface or by shimming the bearings.
8. Concrete Sealer shall be applied to all exposed surfaces of the abutments.
9. The existing structural steel coating contains lead. The Contractor shall take appropriate precautions to deal with the presence of lead on this project.
10. The Inorganic Zinc Rich Primer / Acrylic / Acrylic Paint System shall be used for shop and field painting of new structural steel except where otherwise noted. The color of the final finish coat for all interior steel surface shall be gray, Munsell No. 5B 7/1. The color of the final finish coat for the exterior and bottom flange of the fascia beams shall be Reddish Brown Munsell No. 2.5 YR 3/4. The new structural steel furnished under a separate Fabrication Contract will be delivered with the prime coat. The intermediate and final finish coat shall be field painted as part of this Contract. See Special Provisions for "Cleaning and Painting New Metal Structures."
11. The Contractor shall drive test piles to 110% of the nominal required bearing specified in production locations at substructures specified or approved by the Engineer before ordering the remainder of piles.
12. The Contractor is alerted that camber and dead load deflection values shown on the drawings were developed based on the deck pouring sequence shown in the Contract Drawings. Any deviation from this pouring sequence may require changes to camber and elevations that reflect dead load deflections. If the Contractor wishes to vary from the sequence shown on the plans, then proposed plan revisions and design calculations shall be submitted to the Engineer for review and approval. The calculations shall be prepared and sealed by an Illinois Licensed Structural Engineer.
13. Slip forming of the parapets is not allowed.
14. The pay item, "Removal of Existing Structure No. 1" and "Removal of Existing Structure No. 2" shall also include the removal of the approach retaining walls and stairwell in accordance with the Special Provisions.

**STATE OF ILLINOIS
DEPARTMENT OF TRANSPORTATION**

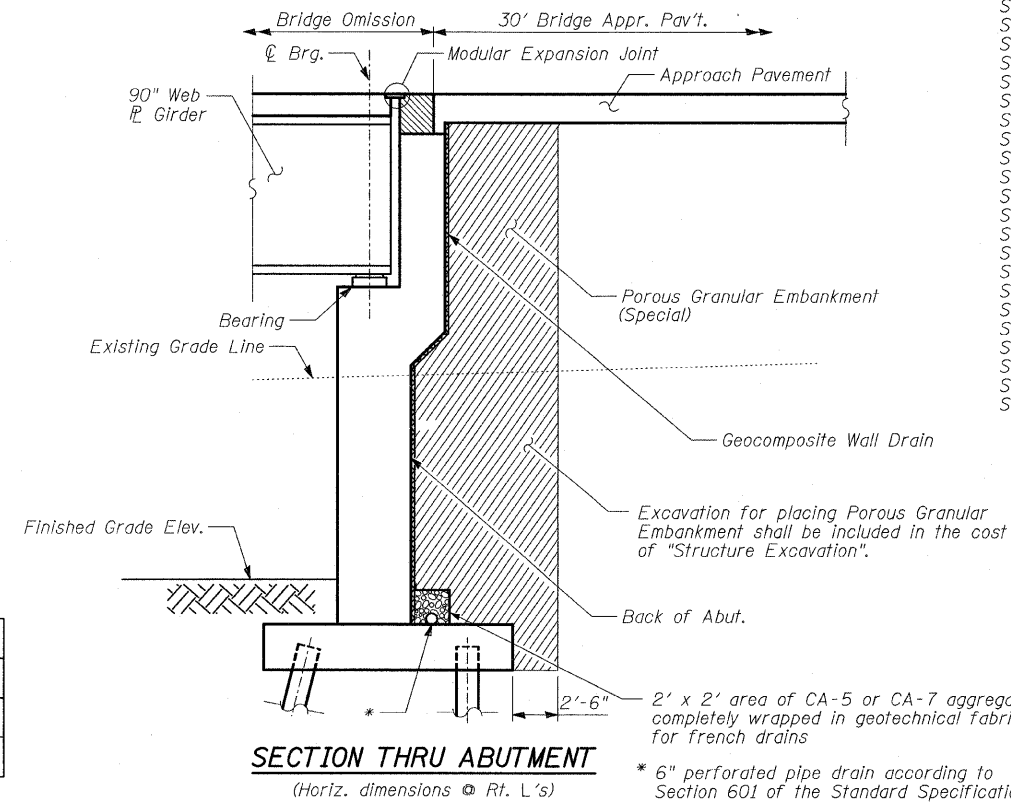
INDEX OF SHEETS

- S-1 OVERALL GENERAL PLAN
- S-2 BRIDGE GENERAL PLAN & ELEVATION, STA 533+64.76
- S-3 GENERAL NOTES, INDEX OF SHEETS AND BILL OF MATERIAL
- S-4 STAGE CONSTRUCTION I
- S-5 STAGE CONSTRUCTION & TEMPORARY SOIL RETENTION SYSTEM
- S-6 TEMPORARY CONCRETE BARRIER FOR STAGE CONSTRUCTION
- S-7 TOP OF SLAB ELEVATIONS LAYOUT
- S-8 TOP OF SLAB ELEVATIONS (1 OF 7)
- S-9 TOP OF SLAB ELEVATIONS (2 OF 7)
- S-10 TOP OF SLAB ELEVATIONS (3 OF 7)
- S-11 TOP OF SLAB ELEVATIONS (4 OF 7)
- S-12 TOP OF SLAB ELEVATIONS (5 OF 7)
- S-13 TOP OF SLAB ELEVATIONS (6 OF 7)
- S-14 TOP OF SLAB ELEVATIONS (7 OF 7)
- S-15 TOP OF NORTH APPROACH SLAB ELEVATIONS
- S-16 TOP OF SOUTH APPROACH SLAB ELEVATIONS
- S-17 SUPERSTRUCTURE SPAN 1
- S-18 SUPERSTRUCTURE SPAN 2
- S-19 SUPERSTRUCTURE SPAN 3
- S-20 SUPERSTRUCTURE DETAILS I
- S-21 SUPERSTRUCTURE DETAILS II
- S-22 SUPERSTRUCTURE DETAILS III
- S-22A SUPERSTRUCTURE DETAILS IV
- S-23 SUPERSTRUCTURE DETAILS V
- S-24 DRAINAGE SCUPPER, DS-II
- S-25 MODULAR EXPANSION JOINT DETAILS
- S-26 PREFORMED JOINT STRIP SEAL
- S-27 DRAINAGE SYSTEM DETAILS
- S-28 BAR SPLICER (ASSEMBLY) DETAILS
- S-29 FRAMING PLAN
- S-30 GIRDER ELEVATION
- S-31 FRAMING DETAILS I
- S-32 FRAMING DETAILS II
- S-33 FRAMING DETAILS III
- S-34 FIXED BEARING
- S-35 FLOATING BEARINGS
- S-36 METAL SHELL PILES
- S-37 NORTH ABUTMENT
- S-38 NORTH ABUTMENT DETAILS I
- S-39 NORTH ABUTMENT DETAILS II
- S-39A NORTH ABUTMENT DETAILS III
- S-40 SOUTH ABUTMENT
- S-41 SOUTH ABUTMENT DETAILS I
- S-42 SOUTH ABUTMENT DETAILS II
- S-42A SOUTH ABUTMENT DETAILS III
- S-43 PIER 1
- S-44 PIER 1 DETAILS
- S-45 PIER 2
- S-46 PIER 2 DETAILS
- S-47 NORTH BRIDGE APPROACH PAVEMENT (1 OF 2)
- S-48 NORTH BRIDGE APPROACH PAVEMENT (2 OF 2)
- S-49 SOUTH BRIDGE APPROACH PAVEMENT (1 OF 2)
- S-50 SOUTH BRIDGE APPROACH PAVEMENT (2 OF 2)
- S-51 BORING LOG B-1 (1 OF 2)
- S-52 BORING LOG B-1 (2 OF 2)
- S-53 BORING LOG B-2 (1 OF 2)
- S-54 BORING LOG B-2 (2 OF 2)
- S-55 BORING LOG B-3 (1 OF 2)
- S-56 BORING LOG B-3 (2 OF 2)
- S-57 BORING LOG B-4 (1 OF 2)
- S-58 BORING LOG B-4 (2 OF 2)
- S-59 BORING LOG B-5 (1 OF 2)
- S-60 BORING LOG B-5 (2 OF 2)
- S-61 BORING LOG B-6 (1 OF 2)
- S-62 BORING LOG B-6 (2 OF 2)
- S-63 BORING LOG B-7 (1 OF 2)
- S-64 BORING LOG B-7 (2 OF 2)
- S-65 BORING LOG B-8 (1 OF 2)
- S-66 BORING LOG B-8 (2 OF 2)

ROUTE NO.	SECTION	COUNTY	SHEETS	SHEET NO.	SHEET NO. - S-3 S-66 SHEETS
346	*	LAKE	469	172	
FED. ROAD DIST. NO.		ILLINOIS	FED. AID PROJECT-		
* 125X-HB-(1&2) R-1		CONTRACT # 60826			

TOTAL BILL OF MATERIAL

Item	Unit	Super.	Sub.	Total
POROUS GRANULAR EMBANKMENT (SPECIAL)	CU. YD.	-	934	934
BRIDGE APPROACH PAVEMENT (SPECIAL)	SQ. YD.	474	-	474
REMOVAL OF EXISTING STRUCTURE NO. 1	EACH	-	-	1
REMOVAL OF EXISTING STRUCTURE NO. 2	EACH	-	-	1
PROTECTIVE SHIELD	SQ. YD.	466	-	466
STRUCTURE EXCAVATION	CU. YD.	-	12,595	12,595
CONCRETE STRUCTURES	CU. YD.	-	1,458	1,458
CONCRETE SUPERSTRUCTURE	CU. YD.	2,025	-	2,025
BRIDGE DECK GROOVING	SQ. YD.	6,488	-	6,488
PROTECTIVE COAT	SQ. YD.	8,441	19	8,460
ERECTING STRUCTURAL STEEL	L. SUM	1	-	1
STUD SHEAR CONNECTORS	EACH	10,230	-	10,230
REINFORCEMENT BARS, EPOXY COATED	POUND	525,770	194,210	719,980
BAR SPLICERS	EACH	5,690	498	6,188
FURNISHING METAL PILE SHELLS 14" \times 0.25" Δ	FOOT	-	14,959	14,959
DRIVING PILES	FOOT	-	14,959	14,959
TEST PILE METAL SHELLS	EACH	-	4	4
NAMES PLATES	EACH	1	-	1
PREFORMED JOINT STRIP SEAL	FOOT	99	-	99
CONCRETE SEALER	SQ. FT.	-	523	523
PIPE UNDERDRAIN FOR STRUCTURES 6"	FOOT	-	261	261
MECHANICAL SPLICE	EACH	22	-	22
DRAINAGE SCUPPERS, DS-II	EACH	16	-	16
TEMPORARY SOIL RETENTION SYSTEM	SQ. FT.	-	1,271	1,271
ERECTING HLMR BEARINGS, GUIDED EXPANSION, 250 KIPS	EACH	20	-	20
ERECTING HLMR BEARINGS, GUIDED EXPANSION, 850 KIPS	EACH	10	-	10
DRAINAGE SYSTEM	L.SUM	1	-	1
ERECTING MODULAR EXPANSION JOINT 6"	FOOT	99	-	99
PILE EXTRACTION	EACH	-	11	11
GEOCOMPOSITE WALL DRAIN	SQ. YD.	-	414	414
ANCHOR BOLTS, 1/2"	EACH	-	120	120
PILE SHEETS	EACH		313	313



TYLIN INTERNATIONAL

DESIGNED	- SP
CHECKED	- AD
DRAWN	- MAF
CHECKED	- AD

REVISIONS	
NAME	DATE
SP	6/17/08
AD	6/25/08
Δ Rev. sheet	7-15-08

**GENERAL NOTES, INDEX OF SHEETS
& BILL OF MATERIAL**

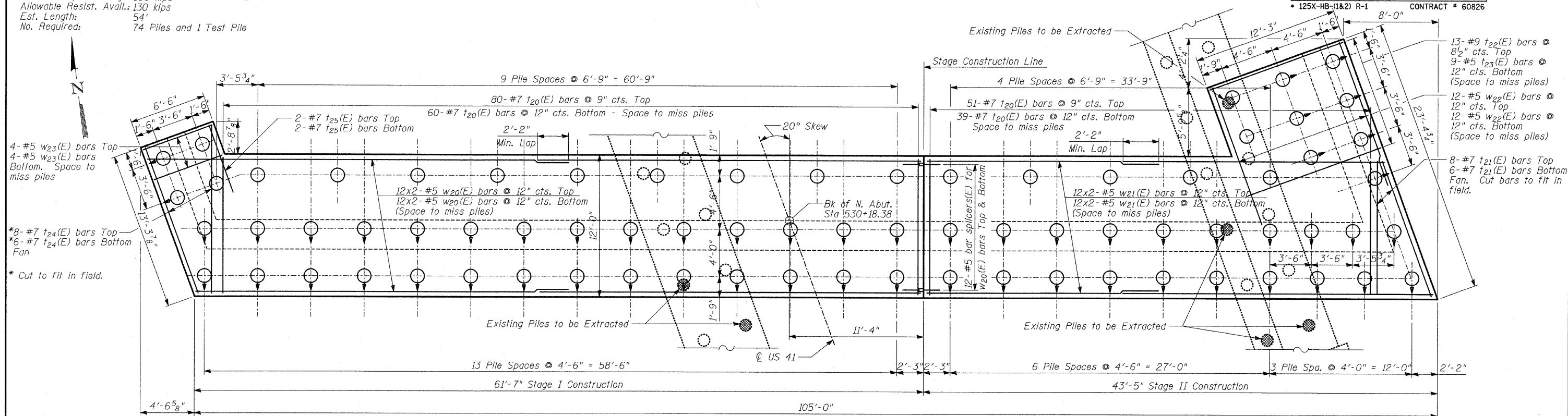
FAP 346 (U.S. ROUTE 41 - SKOKIE
HIGHWAY) OVER ILLINOIS ROUTE 132
SECTION 125X-HB-(1&2)R-1
LAKE COUNTY
S.N. 049-0209

PILE DATA:

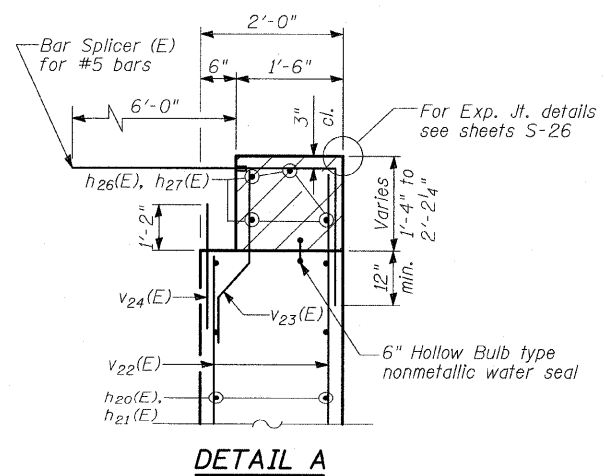
Type: 14" ϕ Metal Shell Piles w/0.25" Thick Walls
 Nominal Req'd Bearing: 390 kips
 Allowable Resist. Avail.: 130 kips
 Est. Length: 54'
 No. Required: 74 Piles and 1 Test Pile

STATE OF ILLINOIS
 DEPARTMENT OF TRANSPORTATION

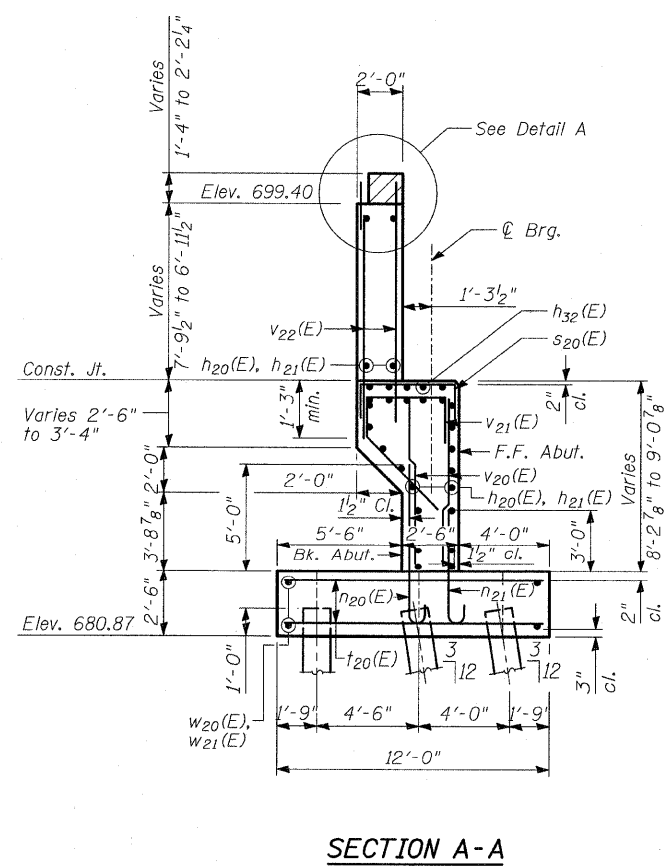
ROUTE NO.	SECTION	COUNTY	TOTAL SHEETS	SHEET NO.	SHEET NO. - S-39
346	*	LAKE	469	208	S-66 SHEETS
FED. ROAD DIST. NO.		ILLINOIS	FED. AID PROJECT		
* 125X-HB-(1&2) R-1		CONTRACT # 60826			



FOOTING PLAN - NORTH ABUTMENT



DETAIL A



SECTION A-A

NOTES

1. For details of Bar Splicers, see sheet S-28 of S-66.
2. Hatched area to be poured after superstructure false work has been removed. Quantity of concrete included with Concrete Superstructure.
3. Space reinforcement in cap to miss anchor bolts.
4. Pour steps monolithically with cap.

**NORTH ABUTMENT
 DETAILS II**

FAP 346 (U.S. ROUTE 41 - SKOKIE
 HIGHWAY) OVER ILLINOIS ROUTE 132
 SECTION 125X-HB-(1&2)R-1
 LAKE COUNTY
 S.N. 049-0209

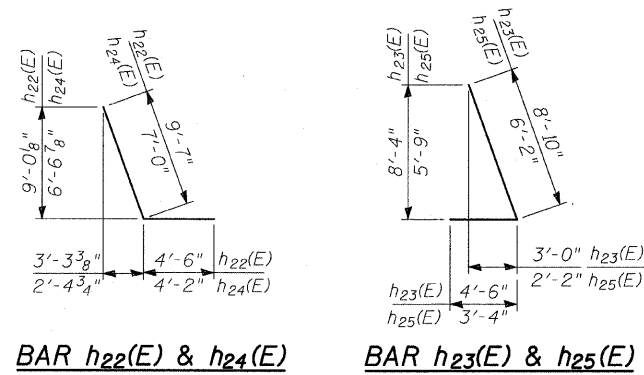
Rev. 7-17-08

TYLIN INTERNATIONAL

DESIGNED	- SP
CHECKED	- AD
DRAWN	- SP, MAF
CHECKED	- AD

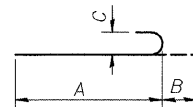
STATE OF ILLINOIS
DEPARTMENT OF TRANSPORTATION

ROUTE NO.	SECTION	COUNTY	TOTAL SHEETS	SHEET NO.	SHEET NO. S-39A
346	*	LAKE	469	208A	S-66 SHEETS
FED. ROAD DIST. NO.		ILLINOIS	FED. AID PROJECT		
* 125X-HB-(1&2) R-1		CONTRACT # 60826			

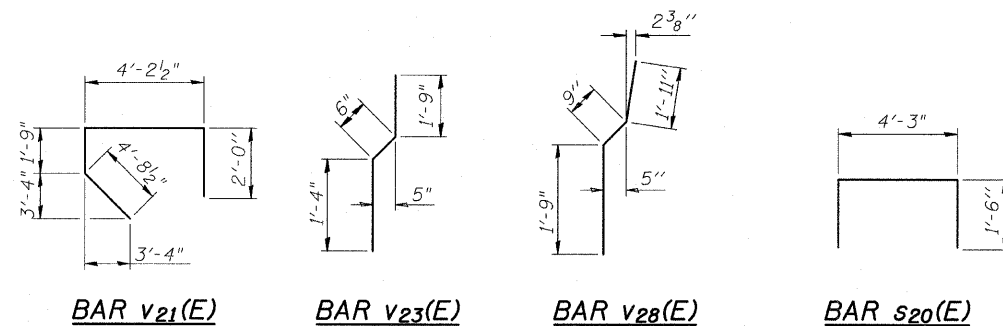


MARK TABLE

Bar	A	B	C
n ₂₀ (E)	7'-3"	11"	8"
n ₂₁ (E)	5'-3"	7"	5"



BAR n₂₀(E) & n₂₁(E)



BILL OF MATERIAL

Bar	No.	Size	Length	Shape
h ₂₀ (E)	74	#5	31'-8"	—
h ₂₁ (E)	74	#5	20'-4"	—
h ₂₂ (E)	18	#7	14'-1"	└
h ₂₃ (E)	18	#7	13'-4"	└
h ₂₄ (E)	20	#5	11'-2"	└
h ₂₅ (E)	20	#5	9'-6"	└
h ₂₆ (E)	8	#6	31'-5"	—
h ₂₇ (E)	8	#6	21'-0"	—
h ₂₈ (E)	18	#5	13'-0"	—
h ₂₉ (E)	20	#5	15'-5"	—
h ₃₀ (E)	6	#4	15'-5"	—
h ₃₁ (E)	6	#4	7'-0"	—
h ₃₂ (E)	5	#5	20'-7"	—
n ₂₀ (E)	244	#8	8'-2"	└
n ₂₁ (E)	123	#5	5'-10"	└
s ₂₀ (E)	21	#5	7'-3"	└
t ₂₀ (E)	230	#7	11'-8"	—
t ₂₁ (E)	14	#7	12'-5"	—
t ₂₂ (E)	13	#9	11'-11"	—
t ₂₃ (E)	9	#5	11'-11"	—
t ₂₄ (E)	14	#7	14'-2"	—
t ₂₅ (E)	4	#7	6'-0"	—
v ₂₀ (E)	298	#5	8'-0"	└
v ₂₁ (E)	100	#5	12'-8"	└
v ₂₂ (E)	200	#5	11'-0"	└
v ₂₃ (E)	98	#5	3'-7"	└
v ₂₄ (E)	98	#5	3'-8"	└
v ₂₅ (E)	23	#5	17'-0"	└
v ₂₆ (E)	46	#5	17'-5"	└

BILL OF MATERIAL (CONT.)

v ₂₇ (E)	23	#5	4'-2"	└
v ₂₈ (E)	46	#5	4'-5"	└
w ₂₀ (E)	48	#5	33'-11"	—
w ₂₁ (E)	48	#5	22'-10"	—
w ₂₂ (E)	24	#5	12'-8"	—
w ₂₃ (E)	8	#5	6'-3"	—
Reinforcement Bars, Epoxy Coated		POUND	32,920	
Porous Granular Embankment, (Special)		CU YD	1,066	
Structure Excavation		CU YD	2,699	
Concrete Structures		CU YD	332	
Protective Coat		SQ YD	10	
Pipe Underdrain For Structures, 6"		FOOT	131	
Furnishing Metal Pile Shells 14"x0.25"		FOOT	3,996	
Driving Piles		FOOT	3,996	
Test Pile Metal Shells		EACH	1	
Concrete Sealer		SQ FT	251	
Bar Splicers		EACH	163	
Geocomposite Wall Drain		SQ YD	185	
Pile Extraction		EACH	6	
Pile Shoes		EACH	75	

TYLIN INTERNATIONAL

DESIGNED	- SP
CHECKED	- AD
DRAWN	- SP, MAF
CHECKED	- AD

NORTH ABUTMENT
DETAILS III

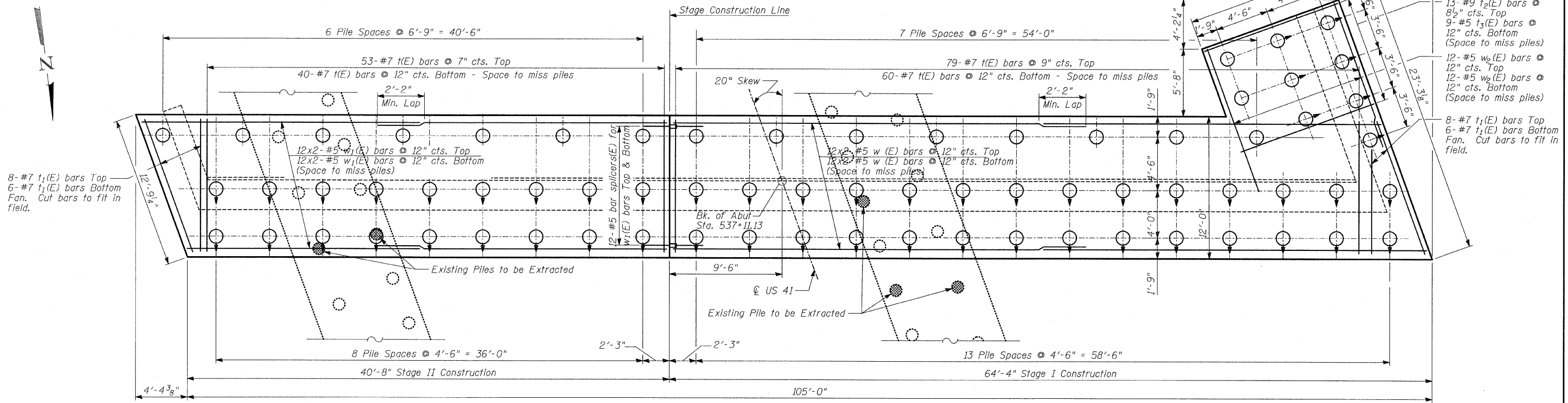
FAP 346 (U.S. ROUTE 41 - SKOKIE
HIGHWAY) OVER ILLINOIS ROUTE 132
SECTION 125X-HB-(1&2)R-1
LAKE COUNTY
S.N. 049-0209

ROUTE NO.	SECTION	COUNTY	TOTAL SHEETS	SHEET	SHEET NO. - S-42 S-66 SHEETS
346	*	LAKE	469	211	
FED. ROAD DIST. NO.		ILLINOIS	FED. AID PROJECT		
* 125X-HB-(1&2) R-1		CONTRACT # 60826			

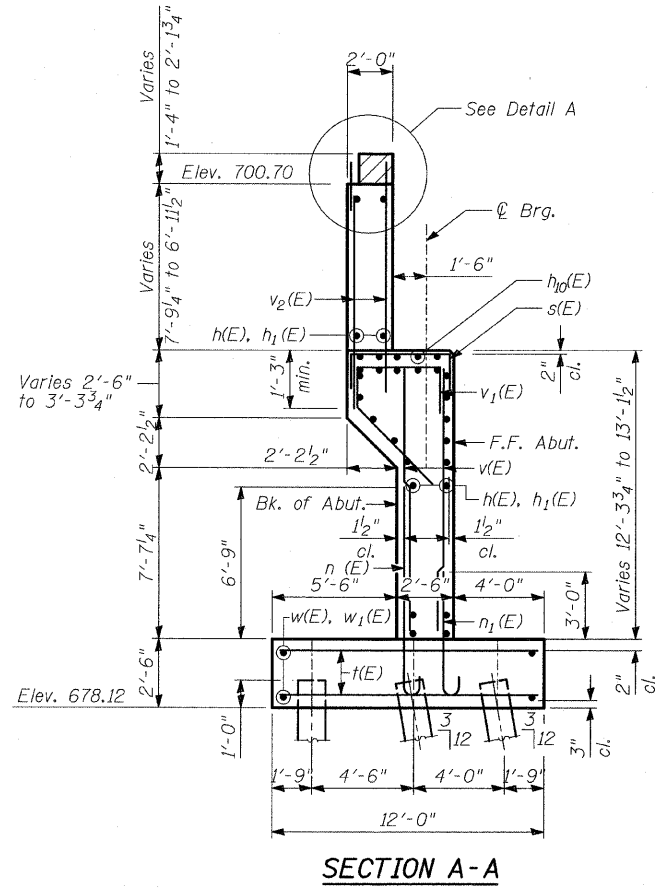
STATE OF ILLINOIS
DEPARTMENT OF TRANSPORTATION

PILE DATA:

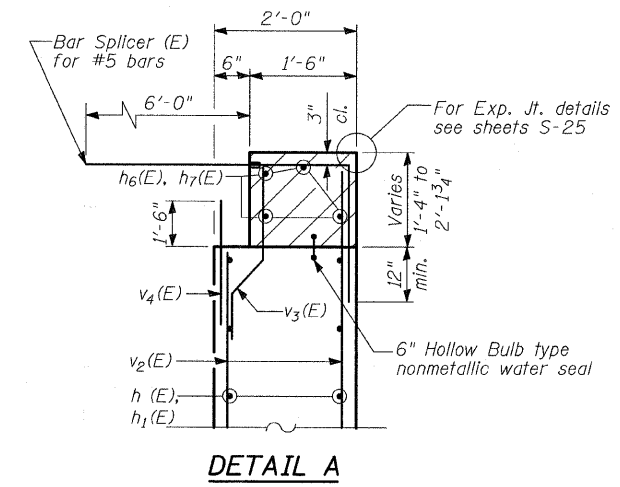
Type: 14" ϕ Metal Shell Piles w/0.25" Thick Walls
 Nominal Req'd Bearing: 390 kips
 Allowable Resist. Avail.: 130 kips
 Est. Length: 41'
 No. Required: 69 Piles and 1 Test Pile



FOOTING PLAN - SOUTH ABUTMENT



SECTION A-A



DETAIL A

NOTES

1. Reinforcement bars designated (E) shall be epoxy coated.
2. For details of Bar Splicers, see sheet S-28 of S-66.
3. Hatched area to be poured after superstructure false work has been removed. Quantity of concrete included with Concrete Superstructure.
4. Space reinforcement in cap to miss anchor bolts.
5. Pour steps monolithically with cap.

**SOUTH ABUTMENT
DETAILS II**

FAP 346 (U.S. ROUTE 41 - SKOKIE
HIGHWAY) OVER ILLINOIS ROUTE 132
SECTION 125X-HB-(1&2)R-1
LAKE COUNTY
S.N. 049-0209

TYLIN INTERNATIONAL

DESIGNED	- SP
CHECKED	- AD
DRAWN	- SP, MAF
CHECKED	- AD

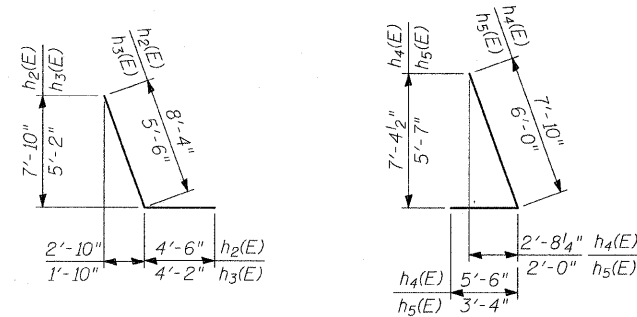
Rev. 1-17-08

STATE OF ILLINOIS
DEPARTMENT OF TRANSPORTATION

ROUTE NO.	SECTION	COUNTY	TOTAL SHEETS	SHEET NO.	SHEET NO. -S-42A
346	*	LAKE	469	211A	S-66 SHEETS
FED. ROAD DIST. NO.	ILLINOIS	FED. AID PROJECT	CONTRACT # 60826		
* 125X-HB-(1&2) R-1					

13- #9 $t_2(E)$ bars @
8 1/2" cts. Top
9- #5 $t_3(E)$ bars @
12" cts. Bottom
(Space to miss piles)

FOOTING PLAN - SOUTH ABUTMENT

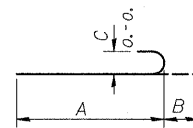


BAR $h_2(E)$ & $h_3(E)$

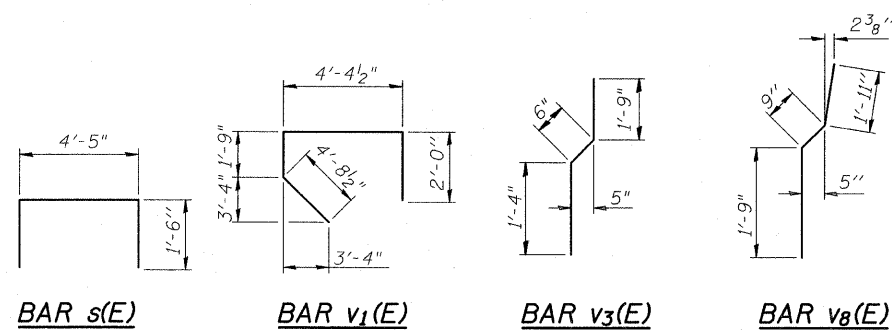
BAR $h_4(E)$ & $h_5(E)$

MARK TABLE

Bar	A	B	C
$n(E)$	8'-11"	11"	8"
$n_1(E)$	5'-2"	7"	5"
$n_2(E)$	9'-11"	1'-3"	11 3/4"



BAR $n(E)$, $n_1(E)$ & $n_2(E)$



BAR $s(E)$

BAR $v_1(E)$

BAR $v_3(E)$

BAR $v_8(E)$

BILL OF MATERIAL

Bar	No.	Size	Length	Shape
$h(E)$	94	#5	31'-2"	—
$h_1(E)$	94	#5	21'-2"	—
$h_2(E)$	34	#7	12'-10"	└┘
$h_3(E)$	18	#5	9'-8"	└┘
$h_4(E)$	34	#7	13'-4"	└┘
$h_5(E)$	18	#5	9'-4"	└┘
$h_6(E)$	8	#6	30'-1"	—
$h_7(E)$	8	#6	20'-11"	—
$h_8(E)$	6	#4	6'-2"	—
$h_9(E)$	6	#4	14'-5"	—
$h_{10}(E)$	10	#5	20'-7"	—
$h_{11}(E)$	28	#5	13'-3"	—
$h_{12}(E)$	18	#5	14'-5"	—
$n(E)$	198	#8	9'-10"	└┘
$n_1(E)$	122	#5	5'-9"	└┘
$n_2(E)$	63	#9	11'-2"	└┘
$s(E)$	42	#5	7'-5"	└┘
$t(E)$	232	#7	11'-8"	—
$t_1(E)$	28	#7	12'-5"	—
$t_2(E)$	13	#9	11'-11"	—
$t_3(E)$	9	#5	11'-11"	—
$v(E)$	298	#5	12'-0"	—
$v_1(E)$	100	#5	12'-10"	└┘
$v_2(E)$	200	#5	12'-10"	—
$v_3(E)$	100	#5	3'-7"	└┘
$v_4(E)$	100	#5	3'-8"	—
$v_5(E)$	22	#5	19'-5"	—
$v_6(E)$	63	#8	15'-6"	—
$v_7(E)$	22	#5	4'-2"	—

BILL OF MATERIAL (CONT.)

$v_8(E)$	63	#5	4'-5"	└┘
$w(E)$	48	#5	33'-1"	—
$w_1(E)$	48	#5	23'-5"	—
$w_2(E)$	24	#5	12'-8"	—
Reinforcement Bars, Epoxy Coated		POUND	39,490	
Porous Granular Embankment, (Special)		CU YD	1,502	
Structure Excavation		CU YD	2,337	
Concrete Structures		CU YD	373	
Protective Coat		SQ YD	9	
Pipe Underdrain For Structures, 6"		FOOT	130	
Furnishing Metal Pile Shells 14" Δ 0.25"		FOOT	2,829	
Driving Piles		FOOT	2,829	
Test Pile Metal Shells		EACH	1	
Concrete Sealer		SQ FT	272	
Bar Splicers		EACH	175	
Geocomposite Wall Drain		SQ YD	229	
Pile Extraction		EACH	5	
Pile Shells		EACH	70 Δ	

TYLIN INTERNATIONAL

DESIGNED	- SP
CHECKED	- AD
DRAWN	- SP, MAF
CHECKED	- AD

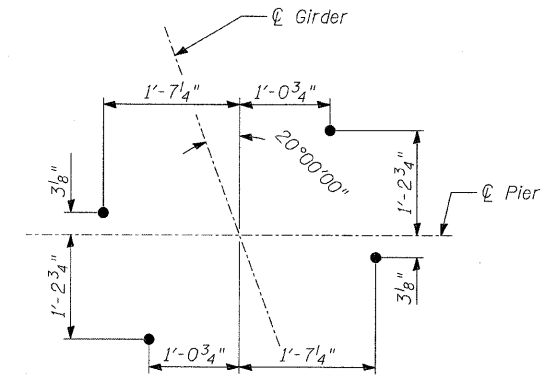
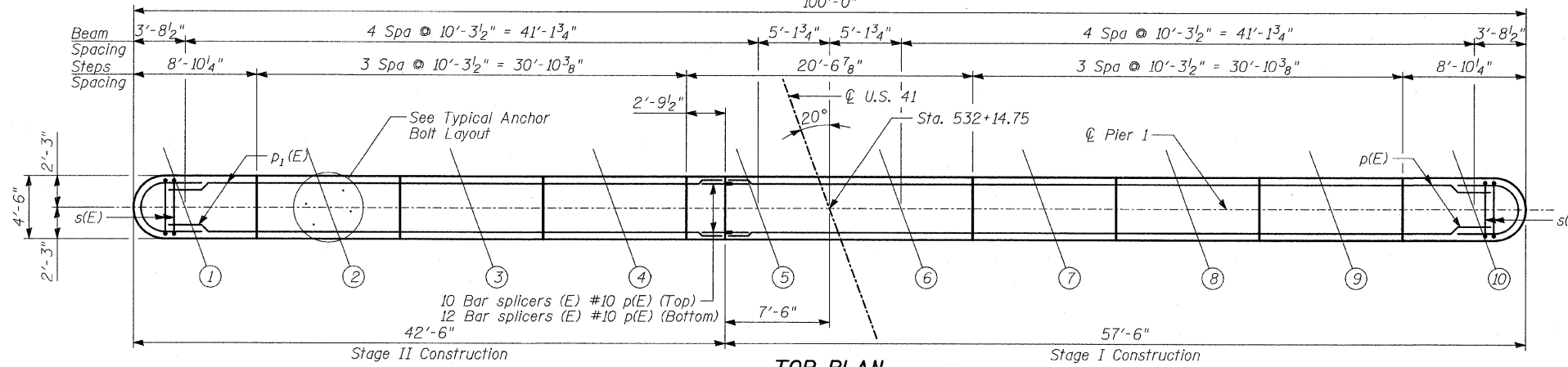
SOUTH ABUTMENT
DETAILS III

FAP 346 (U.S. ROUTE 41 - SKOKIE
HIGHWAY) OVER ILLINOIS ROUTE 132
SECTION 125X-HB-(1&2)R-1
LAKE COUNTY
S.N. 049-0209

Rev. 7-17-08

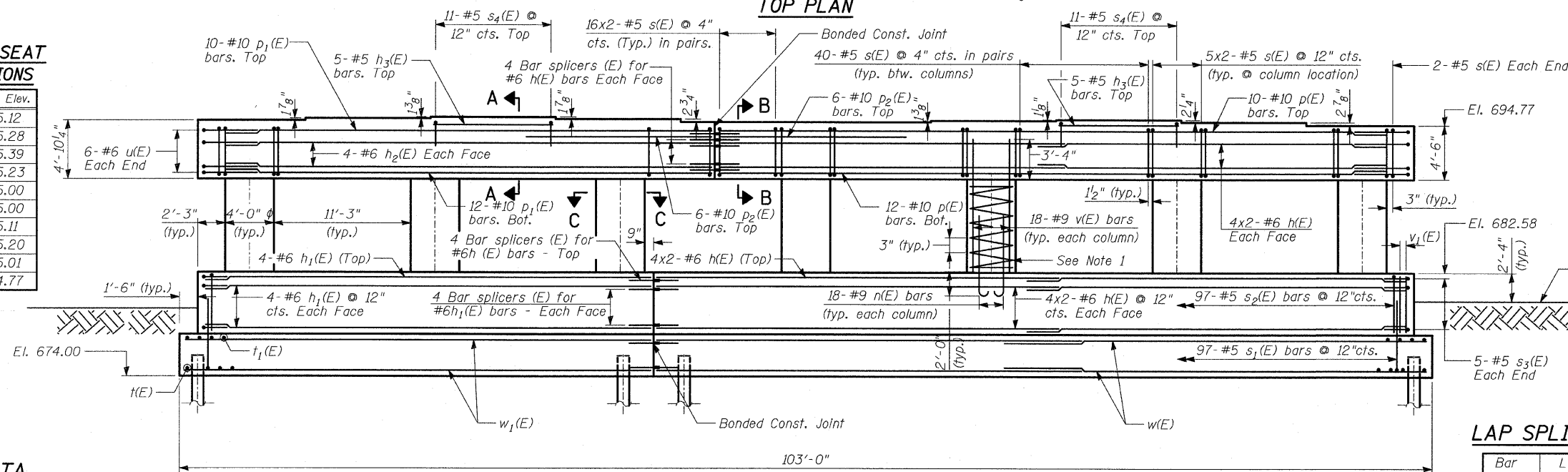
STATE OF ILLINOIS
DEPARTMENT OF TRANSPORTATION

ROUTE NO.	SECTION	COUNTY	SHEET NO.	SHEET NO. - S-43
346		LAKE	469	212
FED. ROAD DIST. NO.		ILLINOIS	FED. AID PROJECT-	5-66- SHEETS
				CONTRACT # 60826



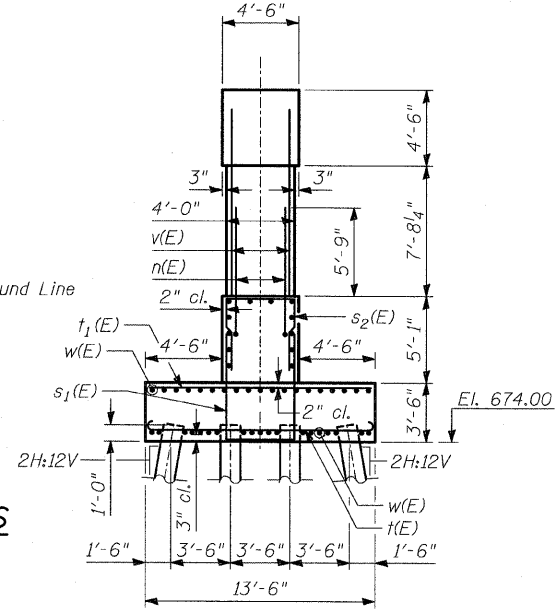
BEARING SEAT ELEVATIONS

Girder	Seat Elev.
1	695.12
2	695.28
3	695.39
4	695.23
5	695.00
6	695.00
7	695.11
8	695.20
9	695.01
10	694.77



LAP SPLICES

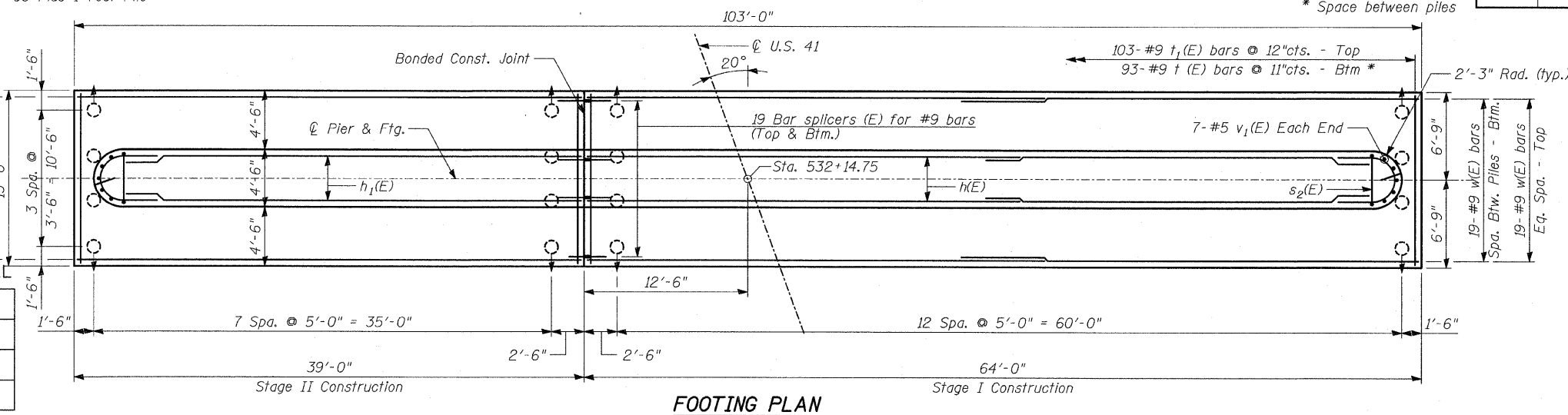
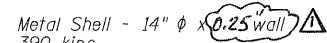
Bar	Lap
#5	2'-2"
#6	2'-7"
#8	4'-6"
#9	5'-9"



- Notes:
1. For spirals in each column, provide 1/2 extra turns top & bottom. Extend spiral 2" into pier cap. Provide 4-#4 spacers or equivalent.
 2. Space reinforcement in cap to miss anchor bolts.
 3. Pour steps monolithically with cap.
 4. Space bottom reinforcement in footing to miss piles.
 5. See Sheet S-44 of S-66, for Sections A-A, B-B and C-C.

PILE DATA

Type: Metal Shell - 14" ϕ x 0.25" wall
 Nominal Required Bearing: 390 kips
 Allowable Resistance Available: 130 kips
 Est. Length: 50.0'
 No. Req'd: 83 Plus 1 Test Pile



TYLINTERNATIONAL

DESIGNED	- MB
CHECKED	- AD
DRAWN	- KA, MAF
CHECKED	- AD

PIER 1
 FAP 346 (U.S. ROUTE 41 - SKOKIE HIGHWAY) OVER ILLINOIS ROUTE 132
 SECTION 125X-HB-(1&2)R-1
 LAKE COUNTY
 S.N. 049-0209

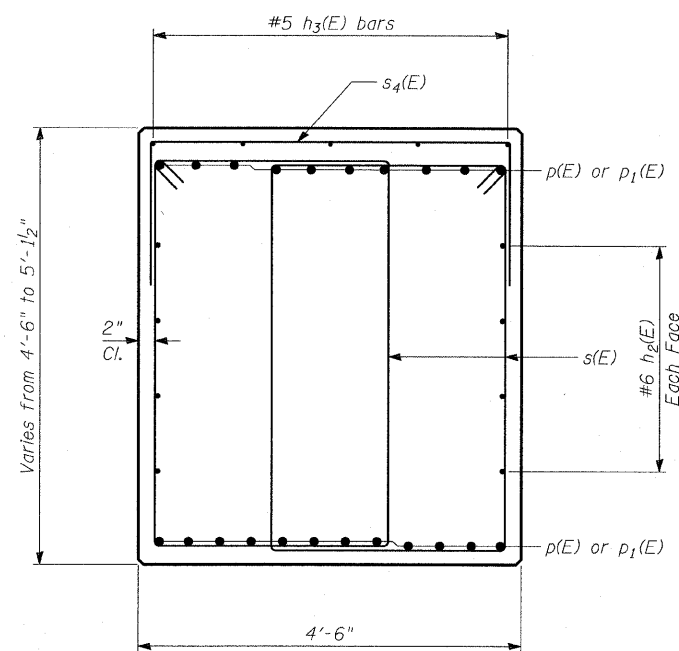
Rev. 7-17-08

STATE OF ILLINOIS
DEPARTMENT OF TRANSPORTATION

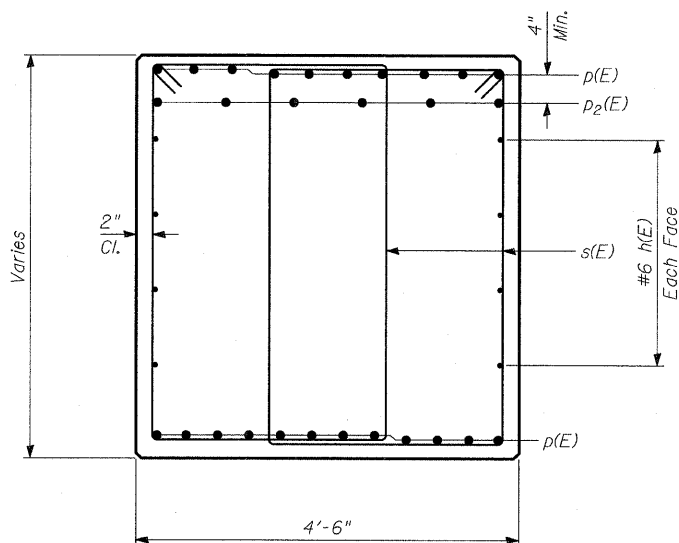
ROUTE NO.	SECTION	COUNTY	TOTAL SHEETS	SHEET	SHEET NO. - S-44
346	*	LAKE	469	213	
FED. ROAD DIST. NO.		ILLINOIS	FED. AID PROJECT		
* 125X-HB-(1&2) R-1		CONTRACT # 60826			

BILL OF MATERIAL

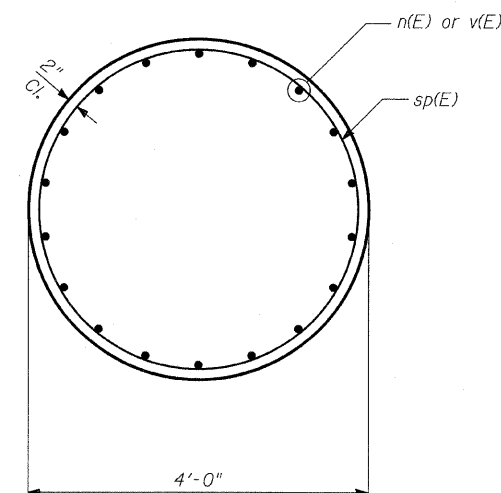
Bar	No.	Size	Length	Shape
h(E)	40	#6	31'-2"	—
h ₁ (E)	12	#6	35'-1"	—
h ₂ (E)	8	#6	40'-1"	—
h ₃ (E)	10	#5	9'-10"	—
n(E)	126	#9	7'-10"	U
p(E)	22	#10	55'-2"	—
p ₁ (E)	22	#10	40'-1"	—
p ₂ (E)	12	#10	15'-6"	—
s(E)	538	#5	17'-7"	□
s ₁ (E)	97	#5	15'-10"	□
s ₂ (E)	97	#5	13'-0"	□
s ₃ (E)	10	#5	10'-9"	U
s ₄ (E)	22	#5	10'-0"	U
* sp(E)	7	#5	7'-10"	WWW
t(E)	93	#9	15'-8"	U
t ₁ (E)	103	#9	13'-2"	—
u(E)	12	#6	11'-7"	U
v(E)	126	#9	11'-0"	—
v ₁ (E)	14	#5	4'-3"	—
w(E)	76	#9	35'-0"	—
w ₁ (E)	38	#9	38'-8"	—
Reinforcement Bars, Epoxy Coated		POUND	60,870	
Structure Excavation		CU YD	3,901	
Concrete Structures		CU YD	377	
Furnishing Metal Pile Shells 14" (0.25")		FOOT	4,150	
Driving Piles		FOOT	4,150	
Test Pile Metal Shells		EACH	1	
Bar Splicers		EACH	80	
Pile Shoes		EACH	84	



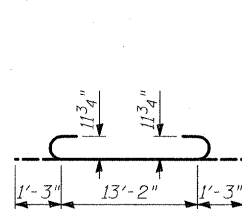
SECTION A-A



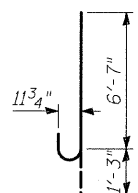
SECTION B-B



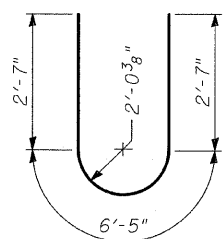
SECTION C-C



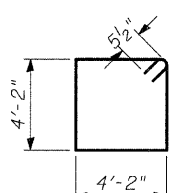
BAR t(E)



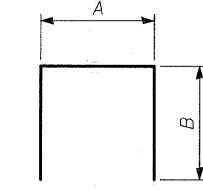
BAR n(E)



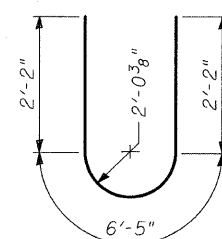
BAR u(E)



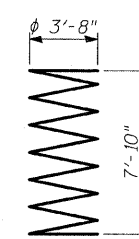
BAR s(E)



BARS s₁(E),
s₂(E) & s₄(E)



BAR s₃(E)



BAR sp(E)

MARK TABLE

Bar	A	B
s ₁ (E)	4'-2"	5'-10"
s ₂ (E)	4'-2"	4'-5"
s ₄ (E)	4'-2"	2'-5"

TYLIN INTERNATIONAL

DESIGNED	- MB
CHECKED	- AD
DRAWN	- MAF
CHECKED	- AD, MAF

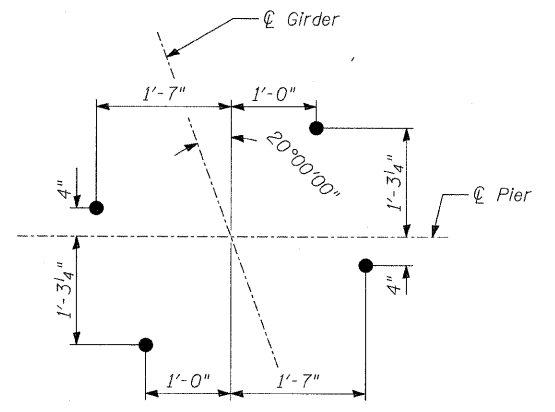
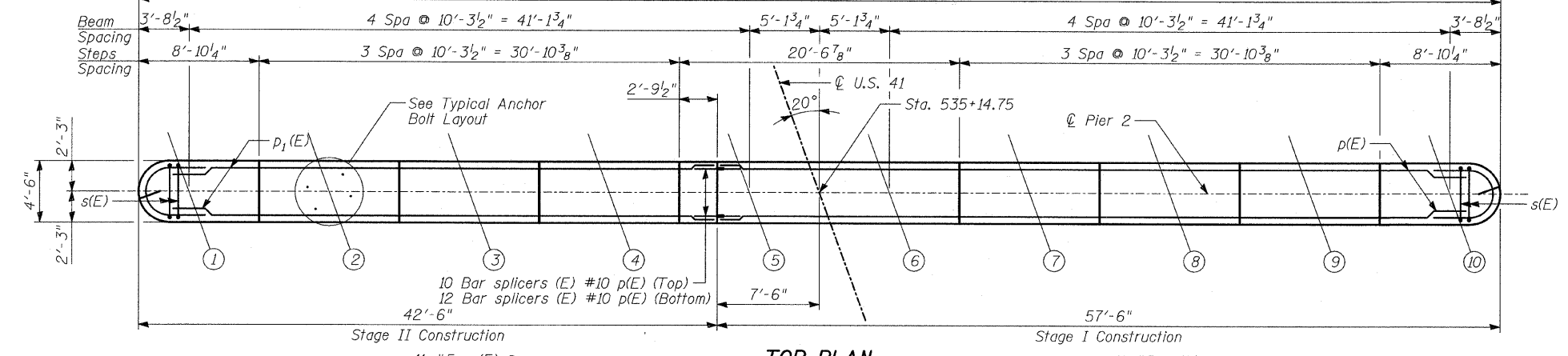
PIER 1 DETAILS

FAP 346 (U.S. ROUTE 41 - SKOKIE
HIGHWAY) OVER ILLINOIS ROUTE 132
SECTION 125X-HB-(1&2)R-1
LAKE COUNTY
S.N. 049-0209

Rev. 7-17-06

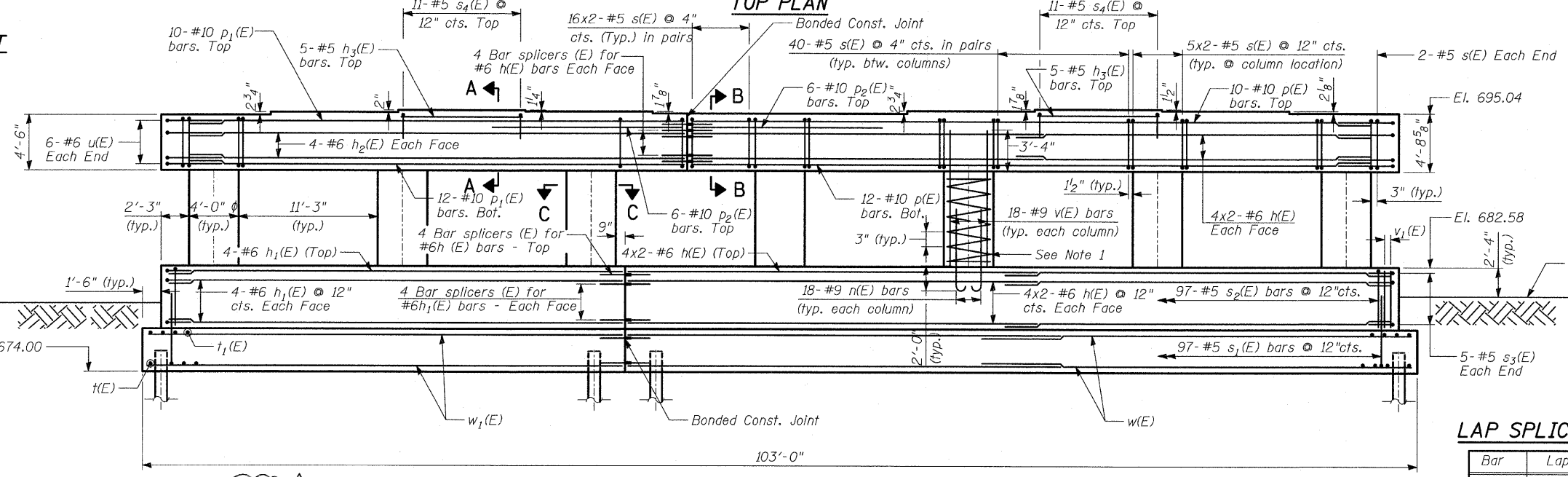
STATE OF ILLINOIS
DEPARTMENT OF TRANSPORTATION

ROUTE NO.	SECTION	COUNTY	TOTAL SHEETS	SHEET	SHEET NO. - S-45
346		LAKE	469	214	S-66- SHEETS
FED. ROAD DIST. NO.		ILLINOIS	FED. AID PROJECT-		
		CONTRACT # 60826			



BEARING SEAT ELEVATIONS

Girder	Seat Elev.
1	694.82
2	695.05
3	695.22
4	695.12
5	694.96
6	694.98
7	695.19
8	695.35
9	695.22
10	695.04



LAP SPLICES

Bar	Lap
#5	2'-2"
#6	2'-7"
#8	4'-6"
#9	5'-9"

- Notes:
1. For spirals in each column, provide 1/2 extra turns top & bottom. Extend spiral 2" into pier cap. Provide 4-#4 spacers or equivalent.
 2. Space reinforcement in cap to miss anchor bolts.
 3. Pour steps monolithically with cap.
 4. Space bottom reinforcement in footing to miss piles.
 5. See Sheet S-46 of S-66, for Sections A-A, B-B and C-C.

PILE DATA

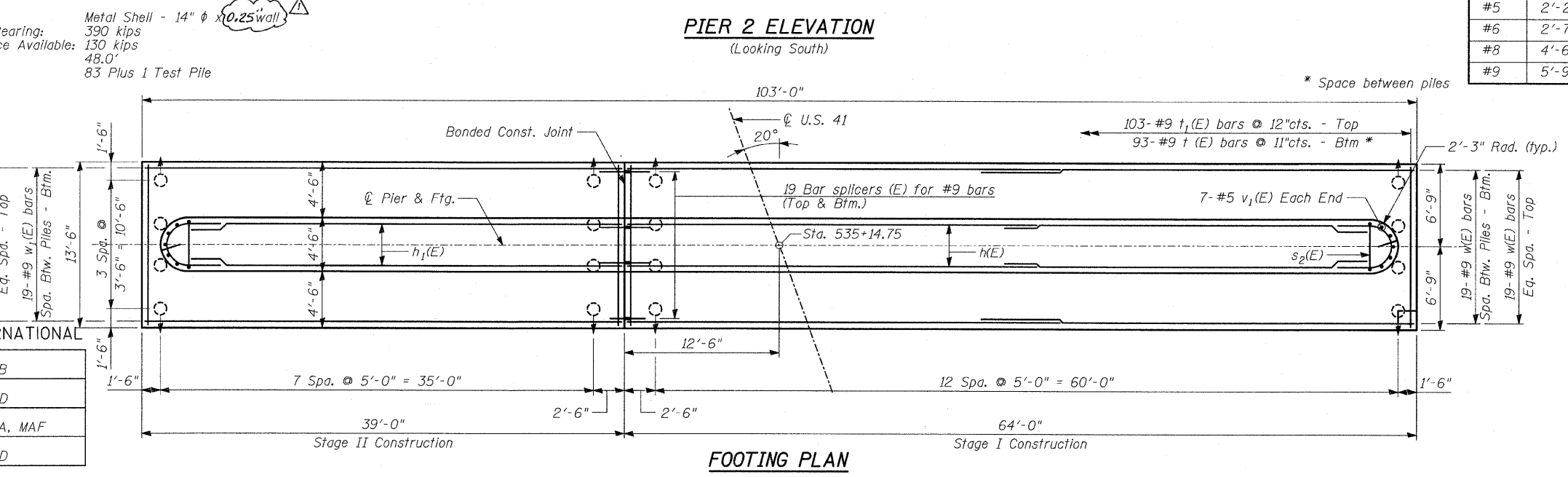
Type: Metal Shell - 14" φ x 0.25" wall

Nominal Required Bearing: 390 kips

Allowable Resistance Available: 130 kips

Est. Length: 48.0'

No. Req'd: 83 Plus 1 Test Pile



TYLIN INTERNATIONAL

DESIGNED	- MB
CHECKED	- AD
DRAWN	- KA, MAF
CHECKED	- AD

PIER 2

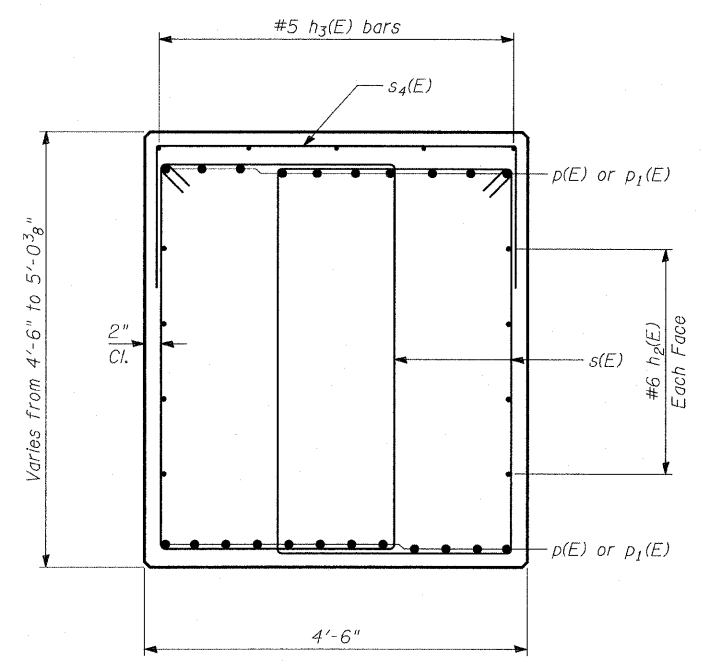
FAP 346 (U.S. ROUTE 41 - SKOKIE HIGHWAY) OVER ILLINOIS ROUTE 132 SECTION 125X-HB-(1&2)R-1 LAKE COUNTY S.N. 049-0209

STATE OF ILLINOIS
DEPARTMENT OF TRANSPORTATION

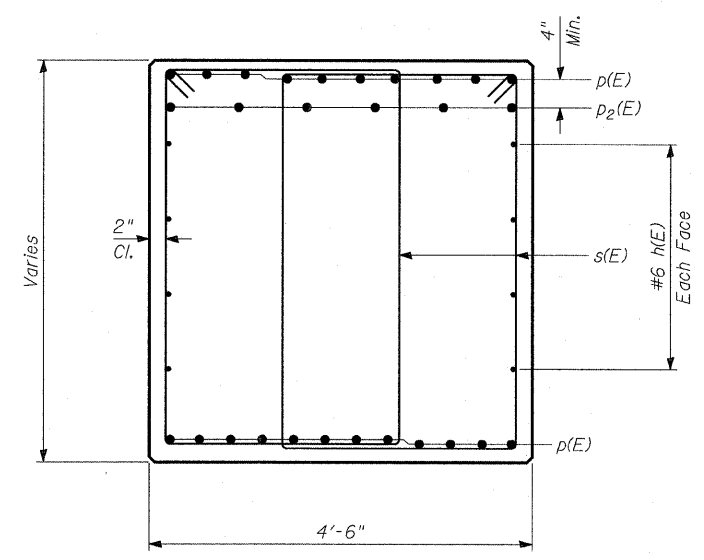
ROUTE NO.	SECTION	COUNTY	TOTAL SHEETS	SHEET NO.
346	*	LAKE	469	S-46
FED. ROAD DIST. NO.		ILLINOIS	FED. AID PROJECT-	S-66 SHEETS
				CONTRACT # 60826

BILL OF MATERIAL

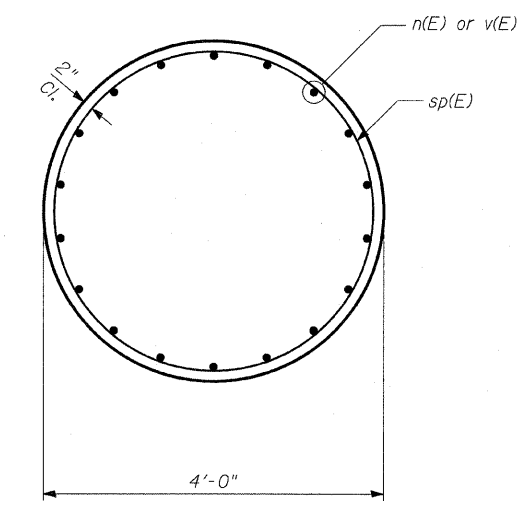
Bar	No.	Size	Length	Shape
h(E)	40	#6	31'-2"	—
h ₁ (E)	12	#6	35'-1"	—
h ₂ (E)	8	#6	40'-1"	—
h ₃ (E)	10	#5	9'-10"	—
n(E)	126	#9	7'-10"	U
p(E)	22	#10	55'-2"	—
p ₁ (E)	22	#10	40'-1"	—
p ₂ (E)	12	#10	15'-6"	—
s(E)	538	#5	17'-7"	□
s ₁ (E)	97	#5	15'-10"	□
s ₂ (E)	97	#5	13'-0"	□
s ₃ (E)	10	#5	10'-9"	U
s ₄ (E)	22	#5	10'-0"	□
* sp(E)	7	#5	7'-11"	WWW
t(E)	93	#9	15'-8"	U
t ₁ (E)	103	#9	13'-2"	—
u(E)	12	#6	11'-7"	U
v(E)	126	#9	11'-1"	—
v ₁ (E)	14	#5	4'-3"	—
w(E)	76	#9	35'-0"	—
w ₁ (E)	38	#9	38'-8"	—
Reinforcement Bars, Epoxy Coated			POUND	60,930
Structure Excavation			CU YD	3,658
Concrete Structures			CU YD	376
Furnishing Metal Pile Shells 14" x 3/8"			FOOT	3,984
Driving Piles			FOOT	3,984
Test Pile Metal Shells			EACH	1
Bar Splicers			EACH	80
Pile Shoes			EACH	84



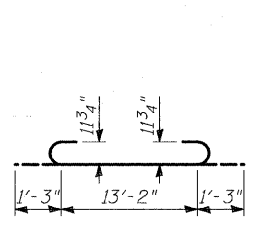
SECTION A-A



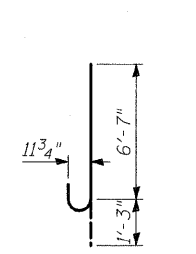
SECTION B-B



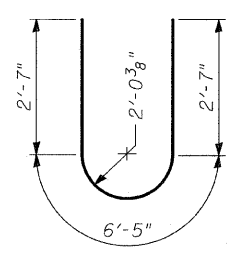
SECTION C-C



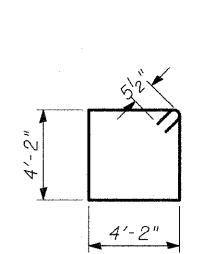
BAR t(E)



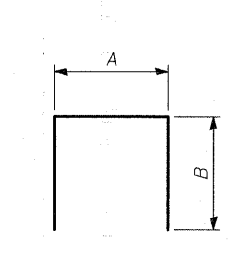
BAR n(E)



BAR u(E)



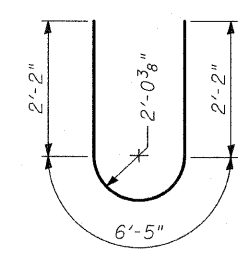
BAR s(E)



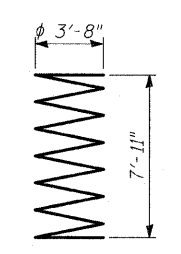
BARS s₁(E), s₂(E) & s₄(E)

MARK TABLE

Bar	A	B
s ₁ (E)	4'-2"	5'-10"
s ₂ (E)	4'-2"	4'-5"
s ₄ (E)	4'-2"	2'-5"



BAR s₃(E)



BAR sp(E)

TYLIN INTERNATIONAL

DESIGNED	- MB
CHECKED	- AD
DRAWN	- MAF
CHECKED	- AD, MAF

Rev. 7-17-08

PIER 2 DETAILS

FAP 346 (U.S. ROUTE 41 - SKOKIE HIGHWAY) OVER ILLINOIS ROUTE 132 SECTION 125X-HB-(1&2)R-1 LAKE COUNTY S.N. 049-0209