

CURVE DATA 41CL

PROP. CURVE M41CL-1
 PI Sta. 509+69.82
 N= 2,080,054.15
 E= 1,101,338.58
 $\Delta = 18^\circ 22' 38''$ (RT)
 D = 3' 59' 57"
 T = 231.75'
 R = 1,432.69'
 L = 459.52'
 E = 18.62'
 PC Sta. 507+38.07
 N= 2,080,111.44
 E= 1,101,114.02
 PCC Sta. 511+97.59
 N= 2,079,928.99
 E= 1,101,533.62
 $\theta = N/A$
 TR = N/A, SE RUN = N/A

PROP. CURVE M41CL-2
 PI Sta. 517+57.77
 N= 2,079,626.45
 E= 1,102,005.08
 $\Delta = 44^\circ 06' 00''$ (RT)
 D = 4' 08' 34"
 T = 560.17'
 R = 1,383.00'
 L = 1,064.48'
 E = 109.14'
 PCC Sta. 511+97.59
 N= 2,079,928.99
 E= 1,101,533.62
 PT Sta. 522+62.08
 N= 2,079,081.10
 E= 1,102,133.11
 $\theta = N/A$
 TR = N/A, SE RUN = N/A

PROP. CURVE M41CL-3
 PI Sta. 550+46.16
 N= 2,076,370.70
 E= 1,102,769.38
 $\Delta = 13^\circ 09' 00''$ (RT)
 D = 1' 31' 55"
 T = 201.64'
 R = 3,740.00'
 L = 858.37'
 E = 24.76'
 PC Sta. 546+15.08
 N= 2,076,790.37
 E= 1,102,670.86
 PT Sta. 554+73.45
 N= 2,075,939.62
 E= 1,102,769.84
 $\theta = N/A$
 TR = N/A, SE RUN = N/A

CURVE DATA RAMP B & B1

PROP. CURVE MRMPB-1
 PI Sta. 202+01.64
 N= 2,079,199.48
 E= 1,102,195.71
 $\Delta = 11^\circ 25' 24''$ (RT)
 D = 2' 50' 31"
 T = 201.64'
 R = 2,016.00'
 L = 401.94'
 E = 10.06'
 PC Sta. 200+00.00
 N= 2,079,382.77
 E= 1,102,111.66
 PT Sta. 204+01.94
 N= 2,079,003.18
 E= 1,102,241.79
 $\theta = N/A$
 TR = N/A, SE RUN = N/A

PROP. CURVE MRMPB1-1
 PI Sta. 601+47.01
 N= 2,079,237.53
 E= 1,102,146.45
 $\Delta = 11^\circ 44' 51''$ (RT)
 D = 4' 00' 34"
 T = 147.01'
 R = 1,429.00'
 L = 292.99'
 E = 7.54'
 PC Sta. 600+00.00
 N= 2,079,368.66
 E= 1,102,079.98
 PT Sta. 602+92.99
 N= 2,079,095.62
 E= 1,102,184.82
 $\theta = N/A$
 TR = N/A, SE RUN = N/A

CURVE DATA IL132

PROP. CURVE M132EB-1
 PI Sta. 7+74.59
 N= 2,078,010.57
 E= 1,101,037.64
 $\Delta = 19^\circ 27' 39''$ (RT)
 D = 4' 05' 33"
 T = 240.07'
 R = 1,400.00'
 L = 475.52'
 E = 20.43'
 PC Sta. 5+34.52
 N= 2,077,931.76
 E= 1,100,810.87
 PT Sta. 10+10.04
 N= 2,078,009.33
 E= 1,101,277.70
 $\theta = N/A$
 TR = N/A, SE RUN = N/A

PROP. CURVE M132EB-2
 PI Sta. 14+64.16
 N= 2,078,006.97
 E= 1,101,731.82
 $\Delta = 1^\circ 03' 52''$ (RT)
 D = 0' 31' 15"
 T = 102.17'
 R = 11,000.00'
 L = 204.33'
 E = 0.44'
 PC Sta. 13+61.99
 N= 2,078,007.50
 E= 1,101,629.65
 PT Sta. 15+66.33
 N= 2,078,004.55
 E= 1,101,833.96
 $\theta = N/A$
 TR = N/A, SE RUN = N/A

PROP. CURVE M132EB-3
 PI Sta. 28+82.34
 N= 2,077,973.29
 E= 1,103,149.61
 $\Delta = 1^\circ 04' 32''$ (RT)
 D = 0' 34' 23"
 T = 93.86'
 R = 10,000.00'
 L = 187.70'
 E = 0.44'
 PC Sta. 27+88.48
 N= 2,077,975.51
 E= 1,103,055.78
 PRC Sta. 29+76.19
 N= 2,077,969.30
 E= 1,103,243.38
 $\theta = N/A$
 TR = N/A, SE RUN = N/A

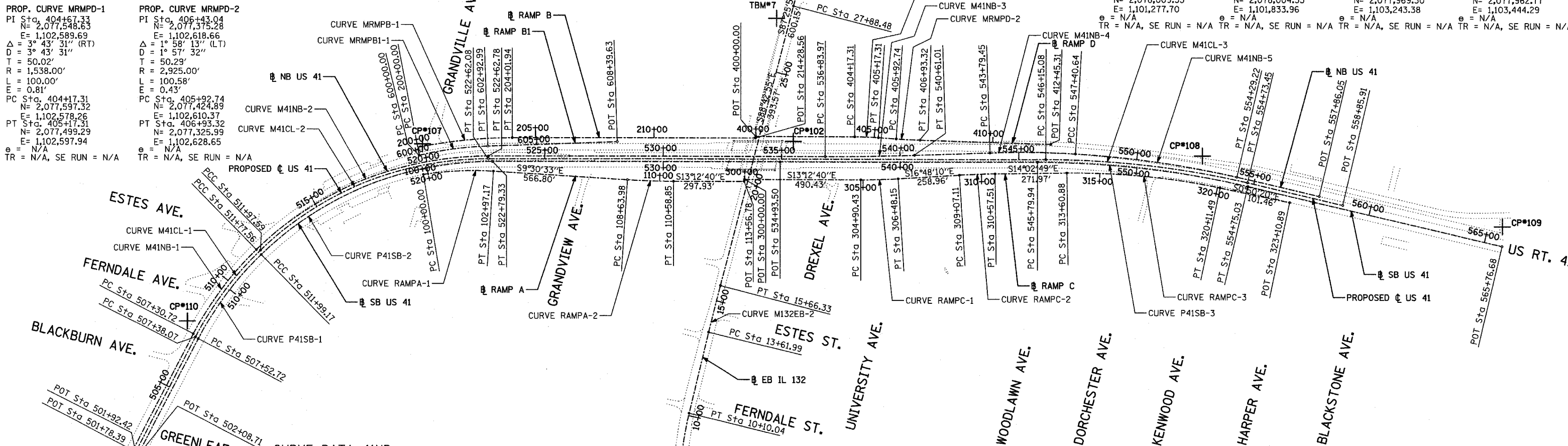
PROP. CURVE M132EB-4
 PI Sta. 30+76.70
 N= 2,077,965.02
 E= 1,103,343.80
 $\Delta = 1^\circ 09' 06''$ (LT)
 D = 0' 34' 23"
 T = 100.52'
 R = 10,000.00'
 L = 201.02'
 E = 0.51'
 PRC Sta. 29+76.19
 N= 2,077,969.30
 E= 1,103,243.38
 PT Sta. 31+77.21
 N= 2,077,962.77
 E= 1,103,444.29
 $\theta = N/A$
 TR = N/A, SE RUN = N/A

CURVE DATA RAMP D

PROP. CURVE MRMPD-1
 PI Sta. 404+67.33
 N= 2,077,548.63
 E= 1,102,589.69
 $\Delta = 3^\circ 43' 31''$ (RT)
 D = 3' 43' 31"
 T = 50.02'
 R = 1,538.00'
 L = 100.00'
 E = 0.81'
 PC Sta. 404+17.31
 N= 2,077,597.32
 E= 1,102,578.26
 PT Sta. 405+17.31
 N= 2,077,499.29
 E= 1,102,597.94
 $\theta = N/A$
 TR = N/A, SE RUN = N/A

PROP. CURVE MRMPD-2
 PI Sta. 406+43.04
 N= 2,077,375.28
 E= 1,102,618.66
 $\Delta = 1^\circ 58' 13''$ (LT)
 D = 1' 57' 32"
 T = 50.29'
 R = 2,925.00'
 L = 100.58'
 E = 0.43'
 PC Sta. 405+92.74
 N= 2,077,424.89
 E= 1,102,610.37
 PT Sta. 406+93.32
 N= 2,077,325.99
 E= 1,102,628.65
 $\theta = N/A$
 TR = N/A, SE RUN = N/A

DATE: _____
 BY: _____
 PLAN: _____
 REVISIONS: _____
 CHECKED: _____
 DATE: _____



CURVE DATA 41NB

PROP. CURVE M41NB-1
 PI Sta. 509+56.04
 N= 2,080,067.65
 E= 1,101,342.28
 $\Delta = 18^\circ 13' 20''$ (RT)
 D = 4' 04' 41"
 T = 225.32'
 R = 1,405.00'
 L = 446.84'
 E = 17.95'
 PC Sta. 507+30.72
 N= 2,080,123.35
 E= 1,101,123.95
 PCC Sta. 511+77.56
 N= 2,079,946.48
 E= 1,101,532.25
 $\theta = 4.2\%$ (EXIST)
 TR = N/A, SE RUN = N/A

PROP. CURVE M41NB-2
 PI Sta. 517+48.86
 N= 2,079,639.23
 E= 1,102,013.89
 $\Delta = 44^\circ 15' 18''$ (RT)
 D = 4' 04' 41"
 T = 571.30'
 R = 1,405.00'
 L = 1,085.21'
 E = 111.71'
 PCC Sta. 511+77.56
 N= 2,079,946.48
 E= 1,101,532.25
 PT Sta. 522+62.78
 N= 2,079,083.06
 E= 1,102,144.46
 $\theta = 5.2\%$
 TR = 36', SE RUN = 189'

PROP. CURVE M41NB-3
 PI Sta. 538+72.51
 N= 2,077,515.93
 E= 1,102,512.35
 $\Delta = 1^\circ 52' 52''$ (LT)
 D = 0' 29' 56"
 T = 188.53'
 R = 11,483.00'
 L = 377.03'
 E = 1.55'
 PC Sta. 536+83.97
 N= 2,077,026.44
 E= 1,102,469.26
 PT Sta. 547+40.64
 N= 2,077,333.90
 E= 1,102,722.64
 $\theta = N/A$
 TR = 36', SE RUN = 105'

CURVE DATA RAMP A

PROP. CURVE RAMP A-1
 PI Sta. 101+49.24
 N= 2,079,195.36
 E= 1,102,061.63
 $\Delta = 13^\circ 06' 42''$ (RT)
 D = 4' 24' 44"
 T = 149.24'
 R = 1,298.60'
 L = 895.09'
 E = 25.82'
 PC Sta. 100+00.00
 N= 2,079,333.12
 E= 1,102,004.23
 PT Sta. 102+97.17
 N= 2,079,048.17
 E= 1,102,086.28
 $\theta = N/A$
 TR = N/A, SE RUN = N/A

PROP. CURVE RAMP A-2
 PI Sta. 109+61.45
 N= 2,078,393.03
 E= 1,102,196.02
 $\Delta = 3^\circ 42' 07''$ (LT)
 D = 2' 16' 38"
 T = 97.47'
 R = 3,016.00'
 L = 157.72'
 E = 1.24'
 PC Sta. 108+63.98
 N= 2,078,489.16
 E= 1,102,179.92
 PT Sta. 110+58.93
 N= 2,078,298.14
 E= 1,102,218.30
 $\theta = N/A$
 TR = N/A, SE RUN = N/A

POT STATION	N COORDINATE	E COORDINATE
502+08.71 (SB)	2,080,232.76	1,100,581.85
534+93.50 (SB)	2,077,879.65	1,102,403.34
565+76.98 (SB)	2,074,833.17	1,102,756.02
501+78.39 (NB)	2,080,259.89	1,100,588.77
557+86.05 (NB)	2,075,632.05	1,102,784.10
113+56.78 (A)	2,078,008.09	1,102,286.39
300+00.00 (C)	2,078,007.90	1,102,294.65
323+10.89 (C)	2,075,747.97	1,102,730.02
501+92.42 (CL)	2,080,246.32	1,100,585.31
558+85.91 (CL)	2,075,527.16	1,102,770.28
400+00.00 (D)	2,078,003.59	1,102,482.89
412+45.31 (D)	2,076,785.00	1,102,738.28
214+28.56 (B)	2,078,003.73	1,102,476.41
608+39.63 (B1)	2,078,567.93	1,102,327.52
4+25.12 (EB)	2,077,895.85	1,100,707.53
62+46.81 (EB)	2,077,893.94	1,106,513.12

CURVE DATA RAMP C

PROP. CURVE RAMP C-1
 PI Sta. 305+69.32
 N= 2,077,453.65
 E= 1,102,424.76
 $\Delta = 3^\circ 35' 30''$ (LT)
 D = 2' 16' 38"
 T = 78.88'
 R = 2,516.00'
 L = 157.72'
 E = 1.24'
 PC Sta. 304+90.43
 N= 2,077,530.44
 E= 1,102,406.73
 PT Sta. 306+48.15
 N= 2,077,378.13
 E= 1,102,447.57
 $\theta = N/A$
 TR = N/A, SE RUN = N/A

PROP. CURVE RAMP C-2
 PI Sta. 309+82.33
 N= 2,077,058.22
 E= 1,102,544.17
 $\Delta = 2^\circ 53' 16''$ (RT)
 D = 1' 55' 12"
 T = 75.22'
 R = 2,984.00'
 L = 150.40'
 E = 0.95'
 PC Sta. 309+07.11
 N= 2,077,130.23
 E= 1,102,522.43
 PT Sta. 310+57.51
 N= 2,076,985.21
 E= 1,102,562.26
 $\theta = N/A$
 TR = N/A, SE RUN = N/A

PROP. CURVE RAMP C-3
 PI Sta. 316+87.47
 N= 2,076,373.74
 E= 1,102,713.75
 $\Delta = 12^\circ 25' 33''$ (RT)
 D = 1' 54' 35"
 T = 326.58'
 R = 3,000.00'
 L = 650.61'
 E = 17.72'
 PC Sta. 313+60.88
 N= 2,076,690.74
 E= 1,102,635.21
 PT Sta. 320+11.49
 N= 2,076,047.27
 E= 1,102,722.24
 $\theta = N/A$
 TR = N/A, SE RUN = N/A

BM #6
 STATION: 32+13.24, 45.14' LT
 ELEVATION = 696.470
 N = 2,078,007.089
 E = 1,103,481.318
 □ CUT IN BASE OF LIGHT POLE AT NORTHEAST CORNER IL. RT. 132 AND MAGNOLIA STREET.

TBM #7
 STATION: 27+20.26, 55.58' LT
 ELEVATION = 694.860
 N = 2,078,032.703
 E = 1,102,988.892
 □ CUT IN TOP OF 6" CURB NORTHEAST CORNER "HANDY ANDY" PARKING LOT AT NORTHWEST CORNER IL. RT. 132 AND WAVELAND STREET.

REVISIONS	
NAME	DATE

ILLINOIS DEPARTMENT OF TRANSPORTATION
 U.S. 41 (SKOKIE HIGHWAY)
 AT IL ROUTE 132

ALIGNMENT AND BENCHMARKS

SCALE: 1"=200'
 DATE: MAY 12, 2008
 DRAWN BY: BK
 CHECKED BY: AB