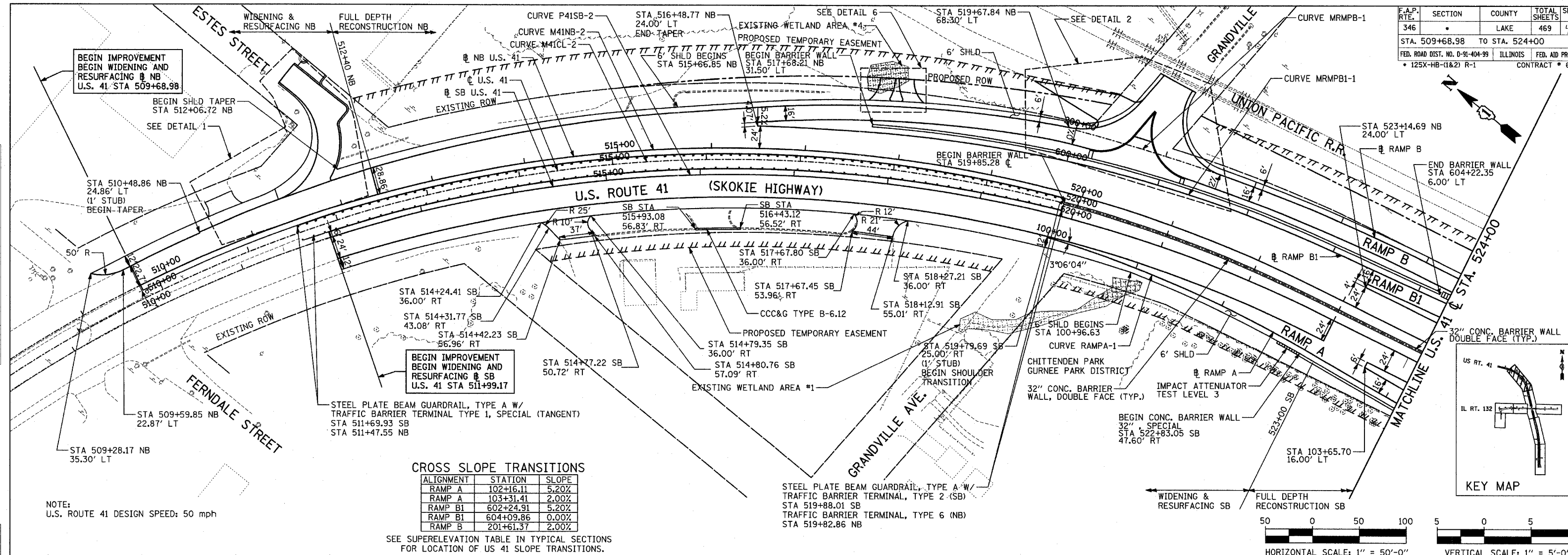


F.A.P. RTE.	SECTION	COUNTY	TOTAL SHEETS	SHEET NO.
346		LAKE	469	48
STA. 509+68.98 TO STA. 524+00				
FED. ROAD DIST. NO. D-91-404-99 ILLINOIS FED. AID PROJ. NO. 125X-HB-(1&2) R-1 CONTRACT # 601				

DATE	BY	DESCRIPTION

DATE	BY	DESCRIPTION

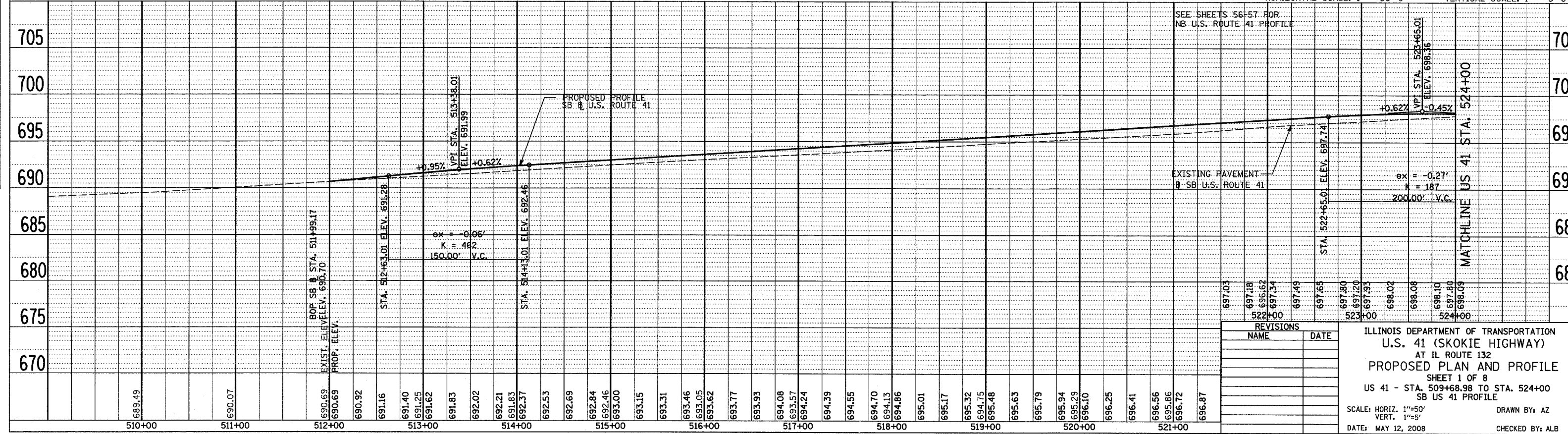
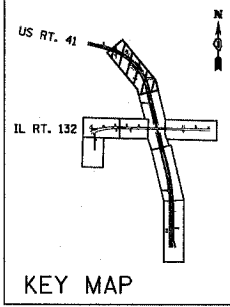


CROSS SLOPE TRANSITIONS

ALIGNMENT	STATION	SLOPE
RAMP A	102+16.11	5.20%
RAMP A	103+31.41	2.00%
RAMP B1	602+24.91	5.20%
RAMP B1	604+09.86	0.00%
RAMP B	201+61.37	2.00%

SEE SUPERELEVATION TABLE IN TYPICAL SECTIONS FOR LOCATION OF US 41 SLOPE TRANSITIONS.

NOTE:
U.S. ROUTE 41 DESIGN SPEED: 50 mph



REVISIONS

NO.	NAME	DATE

ILLINOIS DEPARTMENT OF TRANSPORTATION
U.S. 41 (SKOKIE HIGHWAY)
 AT IL ROUTE 132
PROPOSED PLAN AND PROFILE
 SHEET 1 OF 8
 US 41 - STA. 509+68.98 TO STA. 524+00
 SB US 41 PROFILE

SCALE: HORIZ. 1"=50'
 VERT. 1"=5'
 DATE: MAY 12, 2008
 DRAWN BY: AZ
 CHECKED BY: ALB