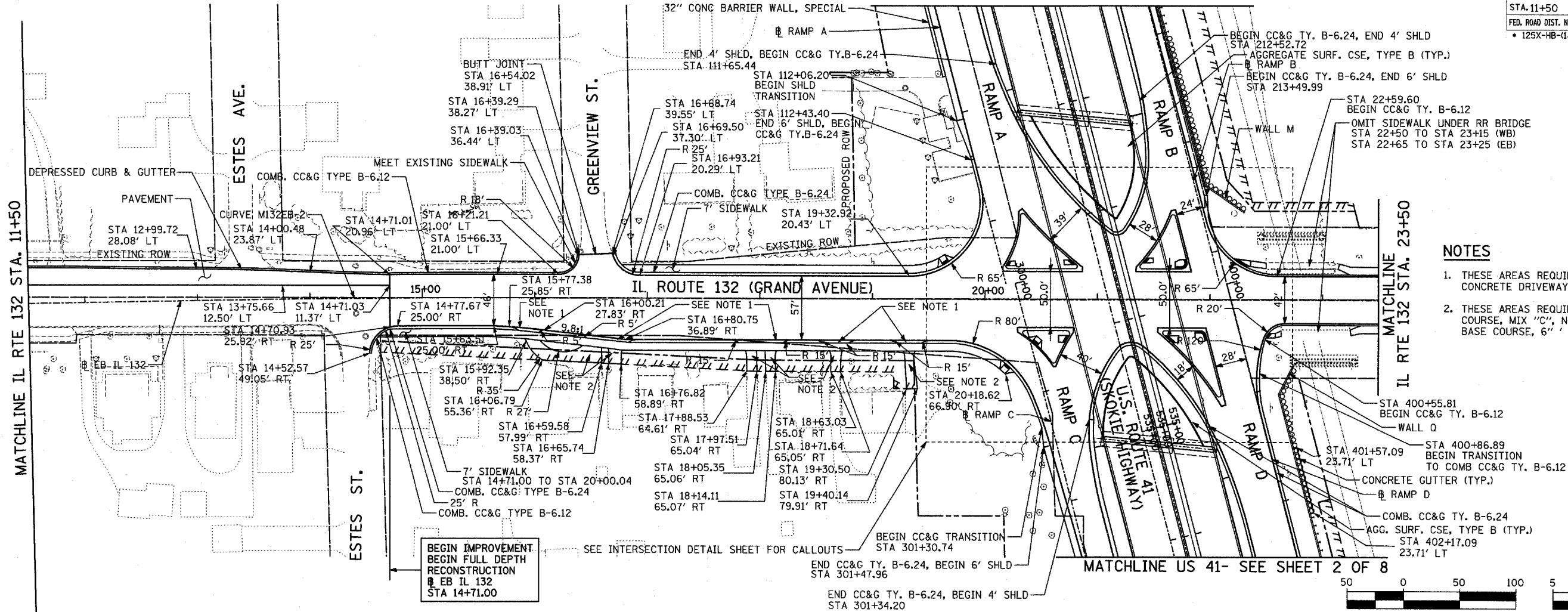
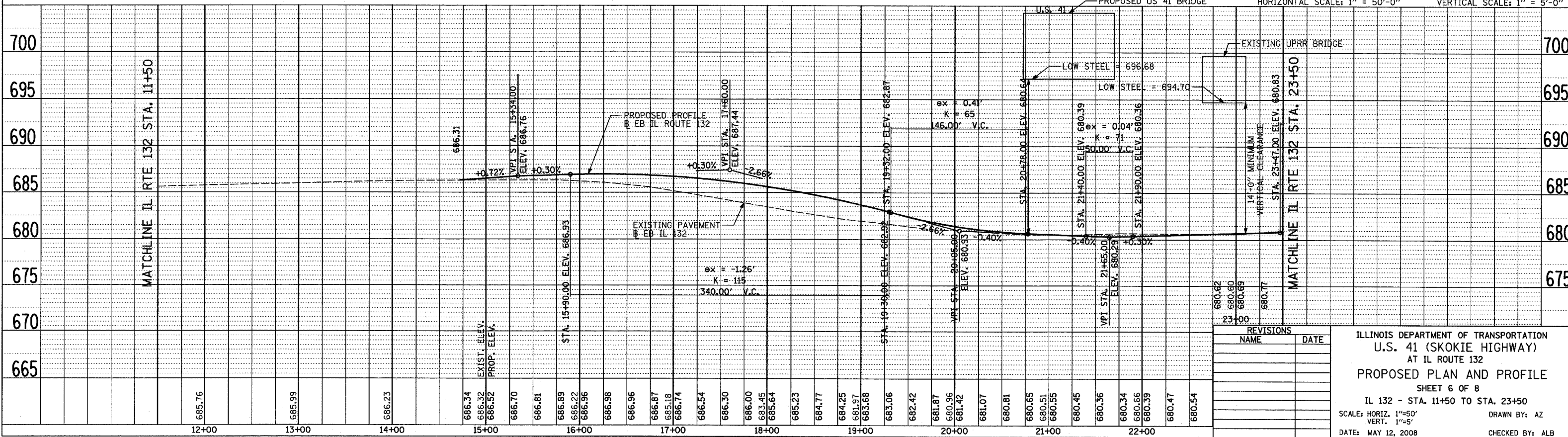
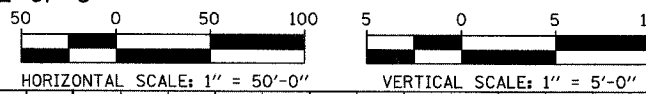
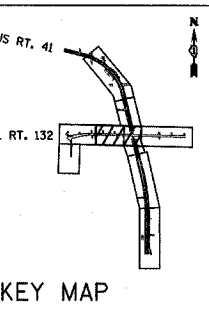


F.A.P. RTE.	SECTION	COUNTY	TOTAL SHEETS	SHEET NO.
346	*	LAKE	469	53
STA. 11+50 TO STA. 23+50				
FED. ROAD DIST. NO. D-91-404-99		ILLINOIS	FED. AID PROJEC	
* 125X-HB-(1&2) R-1		CONTRACT * 608		

MATCHLINE US 41- SEE SHEET 2 OF 8



- NOTES**
1. THESE AREAS REQUIRE 'PORTLAND CEMENT CONCRETE DRIVEWAY PAVEMENT, 6"'
  2. THESE AREAS REQUIRE 'HMA SURFACE COURSE, MIX 'C', N50, 2" AND 'HMA BASE COURSE, 6"'



REVISIONS	
NAME	DATE

ILLINOIS DEPARTMENT OF TRANSPORTATION  
 U.S. 41 (SKOKIE HIGHWAY)  
 AT IL ROUTE 132  
**PROPOSED PLAN AND PROFILE**  
 SHEET 6 OF 8  
 IL 132 - STA. 11+50 TO STA. 23+50  
 SCALE: HORIZ. 1"=50'  
 VERT. 1"=5'  
 DATE: MAY 12, 2008  
 DRAWN BY: AZ  
 CHECKED BY: ALB

PLAN	BY	DATE
SURVEYED		
NOTED		
CHECKED		
REL. OF WAY CHECKED		
CADD FILE NAME		

PROFILE	BY	DATE
SURVEYED		
NOTED		
CHECKED		
STRUCTURE NOTATIONS CHKD		