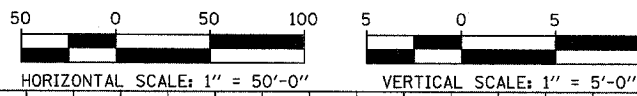
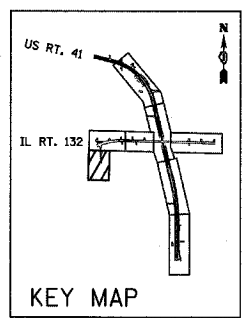
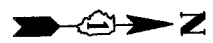
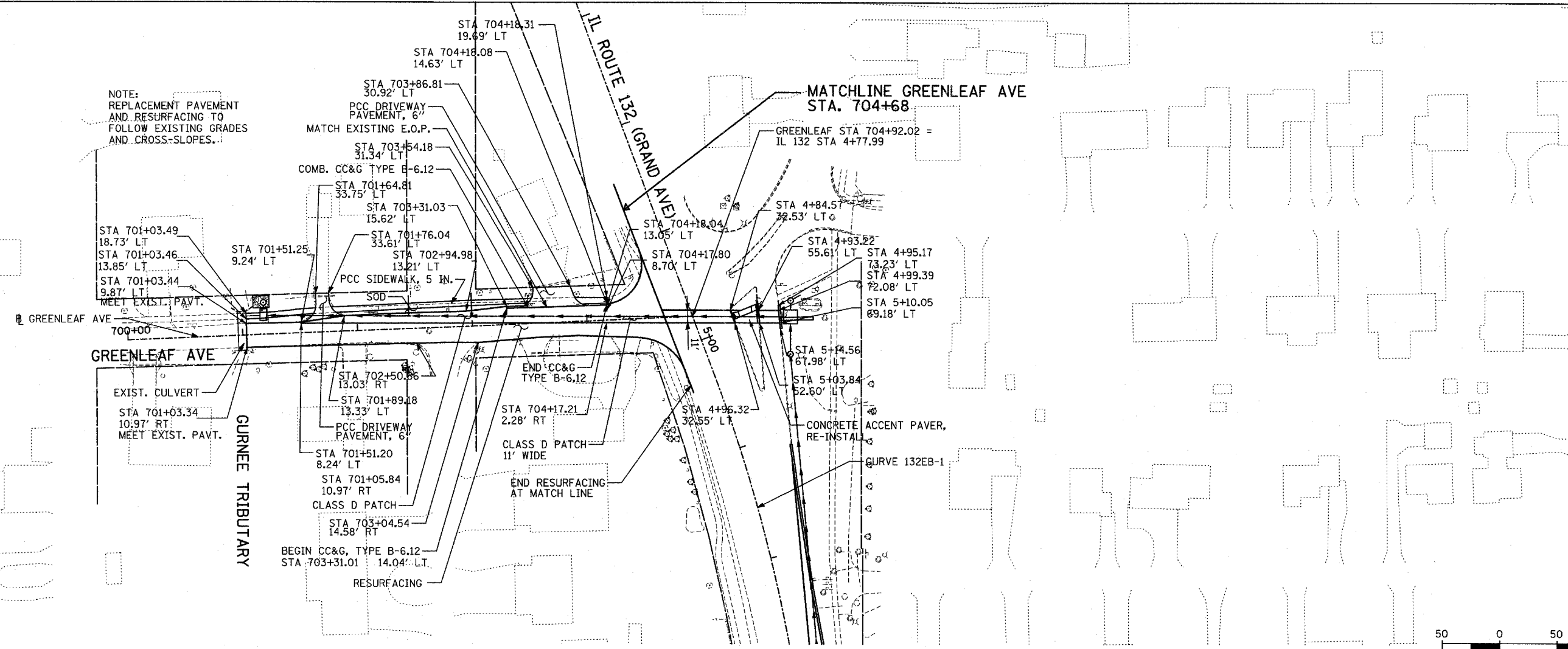


F.A.P. RTE.	SECTION	COUNTY	TOTAL SHEETS	SHEET NO.
346	*	LAKE	469	55
STA. 700+00		TO STA. 704+50		
FED. ROAD DIST. NO. D-91-404-99		ILLINOIS	FED. AID PROJEC	
* 125X-HB-(1&2) R-1		CONTRACT * 608		

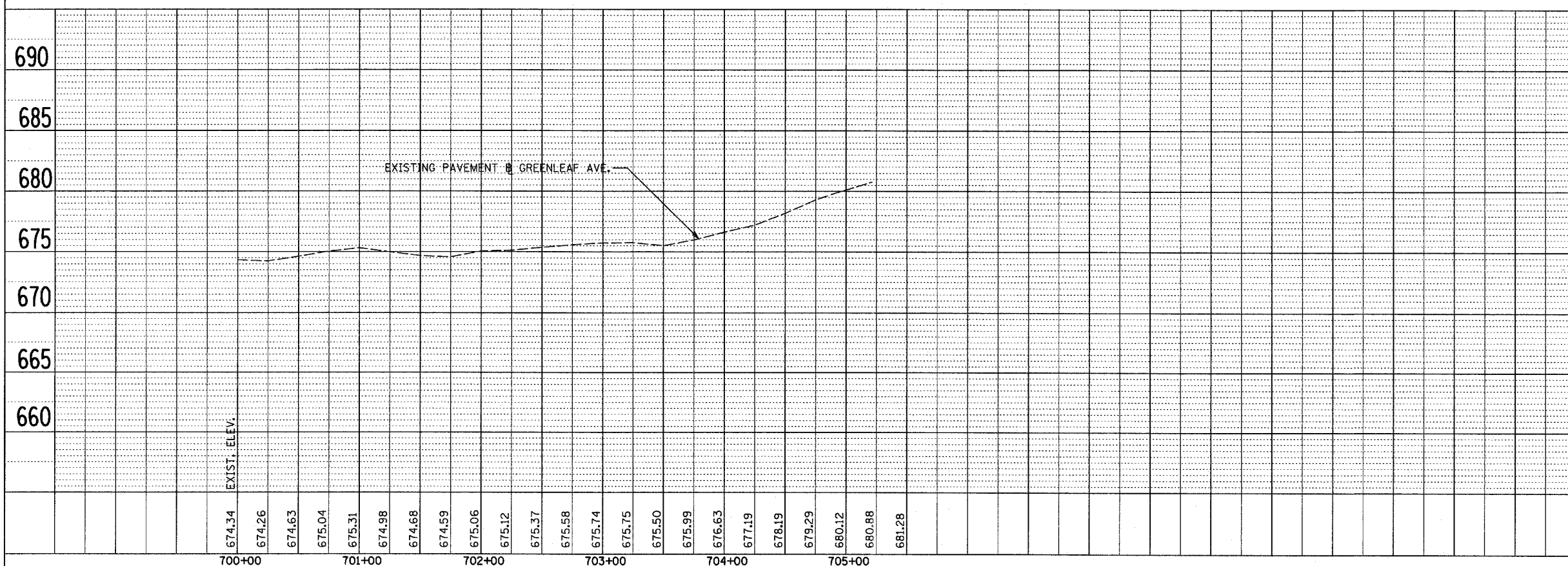


NOTE:  
REPLACEMENT PAVEMENT  
AND RESURFACING TO  
FOLLOW EXISTING GRADES  
AND CROSS-SLOPES.



PLAN	SURVEYED	DATE
	BY	
	PLotted	
	Checked	
	By	
	Way	
	Checked	
	By	
	File	
	Name	

PROFILE	SURVEYED	DATE
	BY	
	Plotted	
	Checked	
	By	
	Structure	
	Notations	
	Checked	
	By	
	File	
	Name	



REVISIONS	
NAME	DATE

ILLINOIS DEPARTMENT OF TRANSPORTATION  
U.S. 41 (SKOKIE HIGHWAY)  
AT IL ROUTE 132  
PROPOSED PLAN AND PROFILE  
SHEET 8 OF 8  
GREENLEAF STREET

SCALE: HORIZ. 1"=50'  
VERT. 1"=5'  
DATE: MAY 12, 2008

DRAWN BY: AZ  
CHECKED BY: ALB