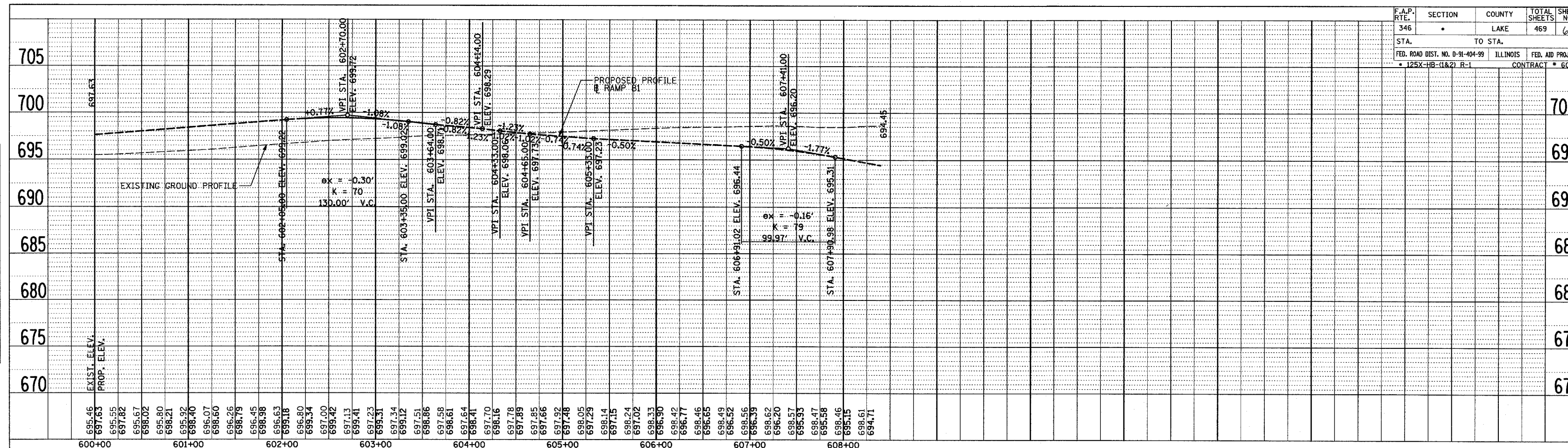


| | | | | |
|--------------|---------|----------------------------------------------------------------------------------------------|--------------|-----------|
| F.A.P. RTE. | SECTION | COUNTY | TOTAL SHEETS | SHEET NO. |
| 346 | | LAKE | 469 | 60 |
| STA. TO STA. | | FED. ROAD DIST. NO. D-91-404-99 ILLINOIS FED. AID PROJ. NO. 125X-HB-(1&2) R-1 CONTRACT # 604 | | |

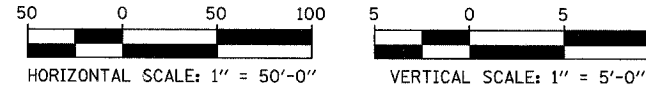
| DATE | BY |
|--------------|----|
| | |
| SURVEYED | |
| ALIGNED | |
| CHECKED | |
| BY: [NAME] | |
| NOTE: 300K | |
| NO. [NUMBER] | |



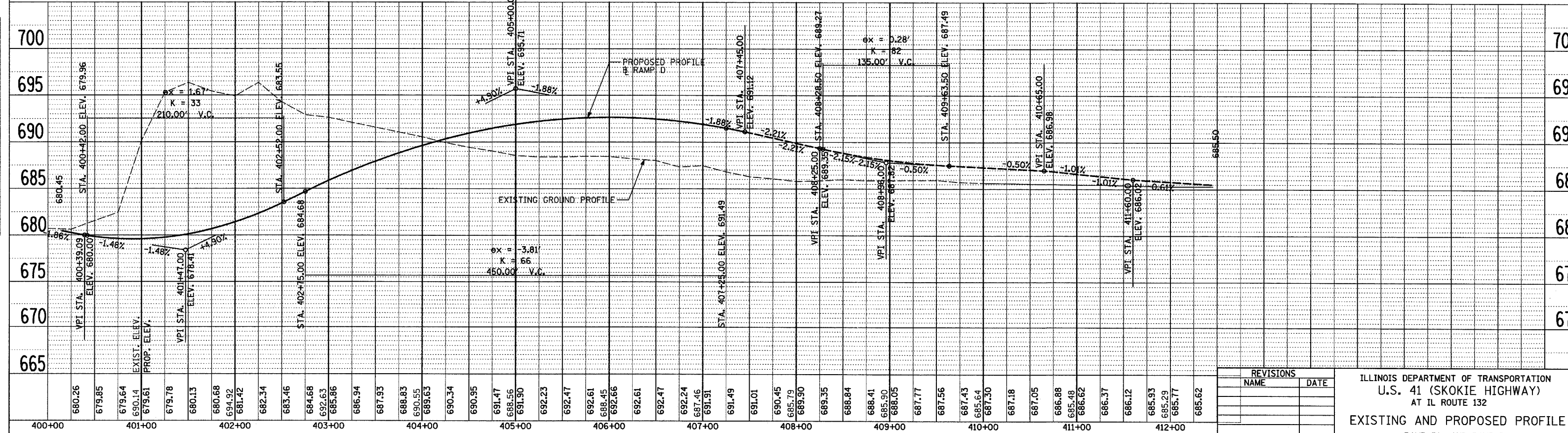
SEE ROADWAY PLAN SHEETS 1-2 OF 8 FOR RAMP B1 PLAN

RAMP B1

NOTE: DASHED PROFILE INDICATES ELEVATIONS ARE CONTROLLED BY MAINLINE PROFILE



| DATE | BY |
|--------------|----|
| | |
| SURVEYED | |
| ALIGNED | |
| CHECKED | |
| BY: [NAME] | |
| NOTE: 300K | |
| NO. [NUMBER] | |



SEE ROADWAY PLAN SHEETS 2-3 OF 8 FOR RAMP D PLAN

RAMP D

| REVISIONS | |
|-----------|------|
| NAME | DATE |
| | |
| | |
| | |
| | |
| | |
| | |
| | |
| | |
| | |
| | |
| | |

ILLINOIS DEPARTMENT OF TRANSPORTATION
U.S. 41 (SKOKIE HIGHWAY)
AT IL ROUTE 132
EXISTING AND PROPOSED PROFILE
RAMP B1 AND RAMP D
SCALE: HORIZ. 1"=50'
VERT. 1"=5'
DATE: MAY 12, 2008
DRAWN BY: AZ
CHECKED BY: ALB