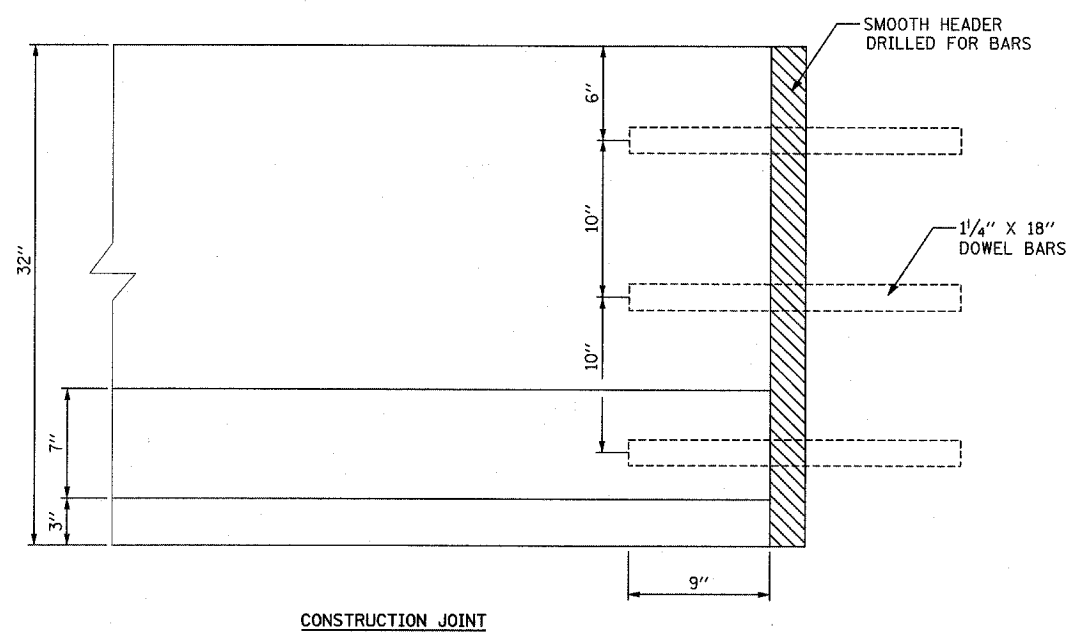
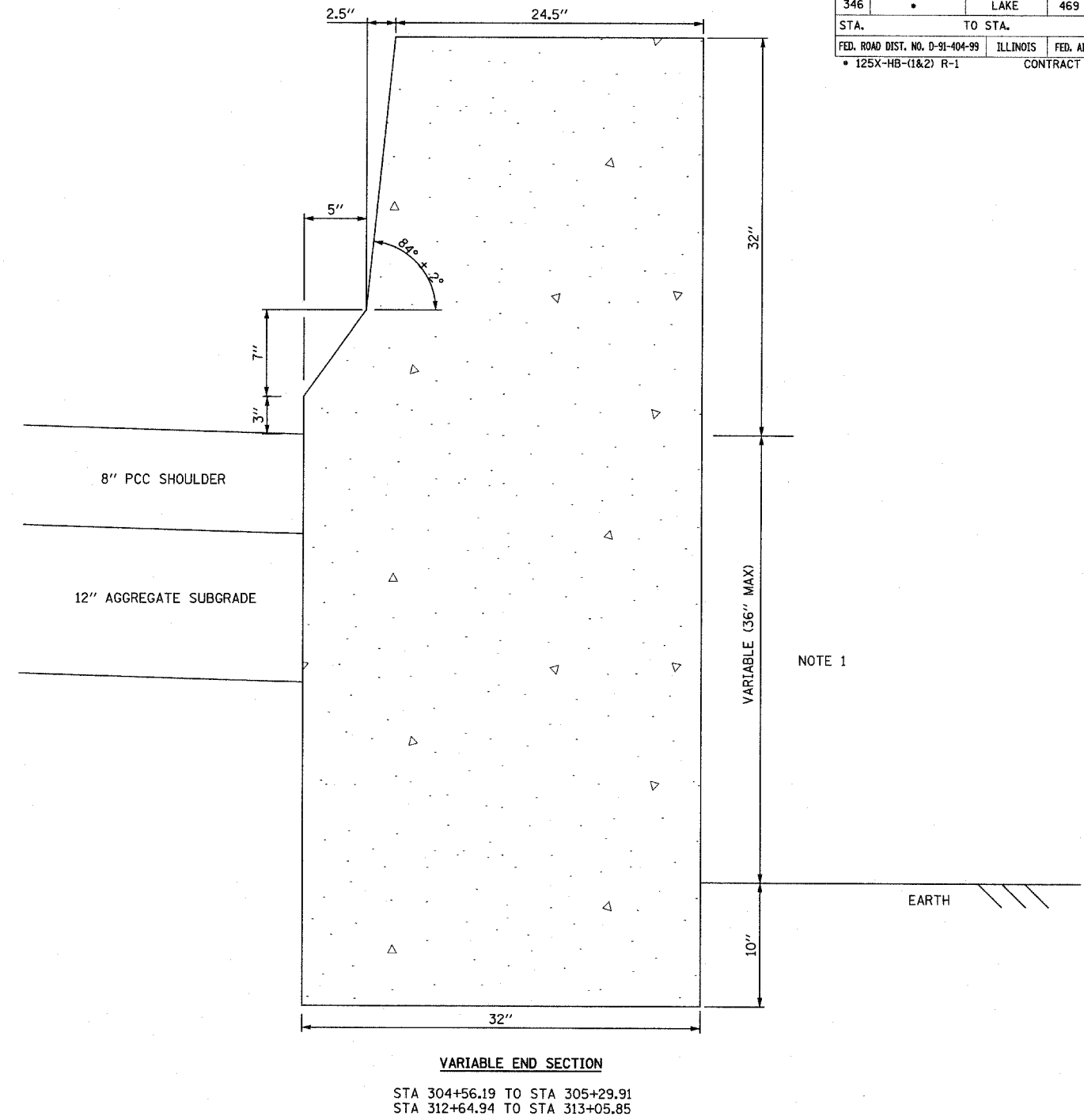
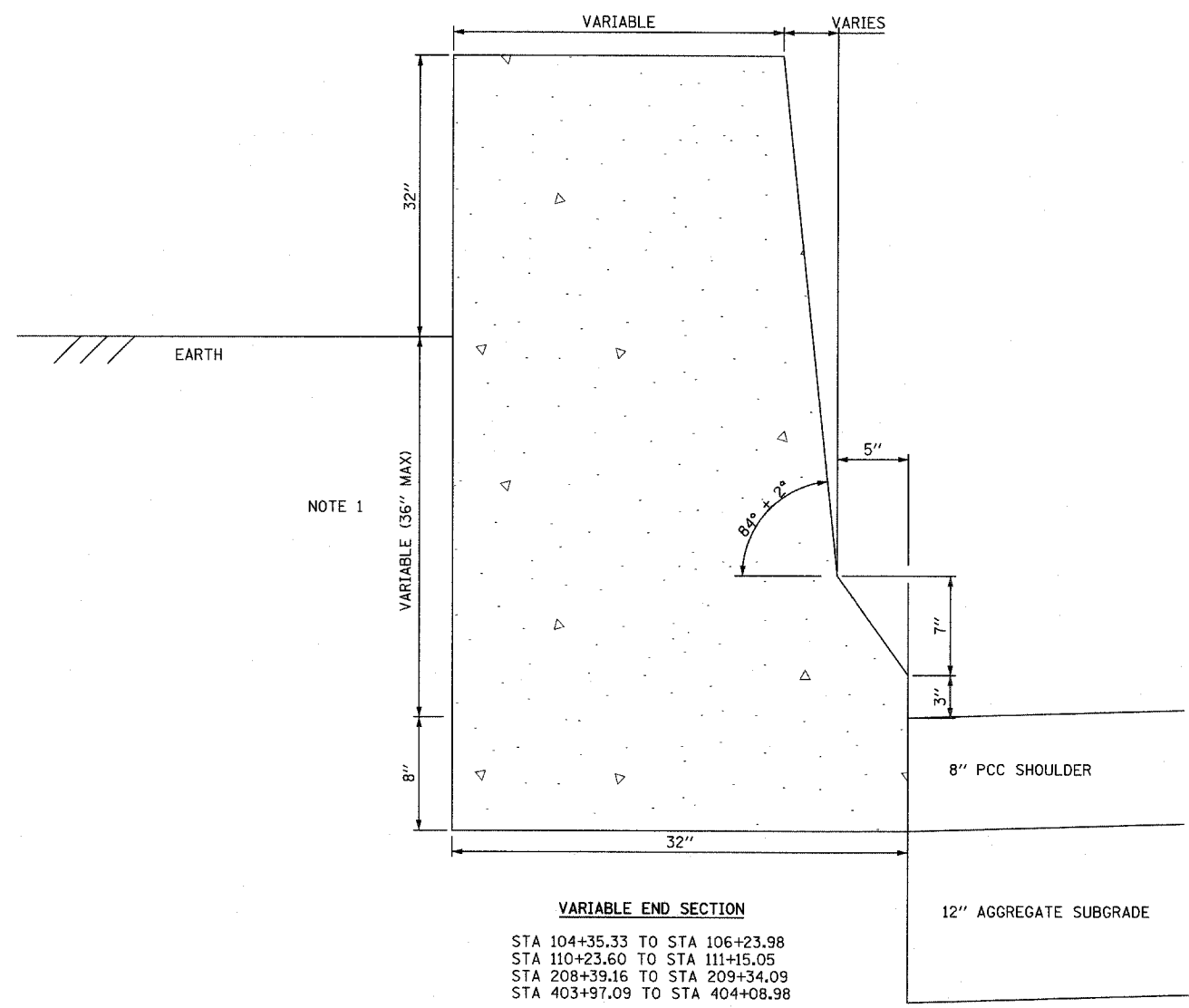


F.A.P. RTE.	SECTION	COUNTY	TOTAL SHEETS	SHEET NO.
346	*	LAKE	469	61
STA.		TO STA.		
FED. ROAD DIST. NO. D-91-404-99		ILLINOIS	FED. AID PROJ. NO.	
* 125X-HB-(1&2) R-1		CONTRACT * 608		

PLAN	SURVEYED	DATE
	PLOTTED	
	CHECKED	
	BY	
	NO.	

PROFILE	SURVEYED	DATE
	PLOTTED	
	CHECKED	
	BY	
	NO.	



NOTE 1
 WHEN THIS DIMENSION EXCEEDS 12", THE BARRIER MAY BE CAST IN TWO POURS.
 NO. 6 X 12" TIE BARS AT 30" CENTERS, OR A SUITABLE KEYWAY, SHALL BE USED BETWEEN THE POURS.

REVISIONS	
NAME	DATE

ILLINOIS DEPARTMENT OF TRANSPORTATION
 U.S. 41 (SKOKIE HIGHWAY)
 AT IL ROUTE 132

**CONCRETE BARRIER SPECIAL,
 32" HEIGHT**

SCALE: NONE DRAWN BY: MSC
 DATE: MAY 12, 2008 CHECKED BY: ALB