

**GENERAL NOTES:**

THE CONTRACTOR SHALL PROVIDE ALL SIGNS, BARRICADES, TEMPORARY BARRIER WALLS AND PROTECTION NECESSARY FOR THE MAINTENANCE OF TRAFFIC AS NOTED IN THE CONTRACT DOCUMENTS, OR AS DIRECTED BY THE ENGINEER.

ALL BARRICADES AND VERTICAL PANELS SHALL BE EQUIPPED WITH MONO DIRECTIONAL STEADY BURNING LIGHTS.

ALL PAVEMENT MARKING REMOVAL SHALL CONFORM TO SECTION TITLED "PAVEMENT MARKING AND MARKER REMOVAL" OF THE IDOT STANDARD SPECIFICATIONS FOR ROAD AND BRIDGE CONSTRUCTION MANUAL.

DURING COLD WEATHER CONSTRUCTION THE CONTRACTOR SHALL USE EPOXY FOR TEMPORARY PAVEMENT MARKINGS UNLESS OTHERWISE ALLOWED BY THE ENGINEER.

DURING NON-COLD WEATHER CONSTRUCTION THE CONTRACTOR SHALL USE TEMPORARY PAVEMENT MARKING TAPE, TYPE III FOR TEMPORARY LANE MARKING ON ALL PERMANENT PAVEMENT IN LIEU OF PAINT IN AREAS WHERE MARKING WILL CONFLICT WITH LATER STAGES, PAINT PAVEMENT MARKING SHALL BE USED ON SURFACES TO BE REMOVED OR OVERLAID, AND DO NOT CONFLICT WITH LATER STAGES.

THE CONTRACTOR SHALL PROVIDE ADEQUATE TEMPORARY DRAINAGE AND EROSION PROTECTION DURING THE DURATION OF THE PROJECT.

ALL WARNING SIGNS WILL BE BLACK LEGEND AND BORDER ON ORANGE REFLECTORIZED BACKGROUND UNLESS OTHERWISE SPECIFIED. ALL WARNING SIGNS SHALL BE 48" X 48".

**TEMPORARY DRAINAGE STRUCTURE SCHEDULE**

STRUCTURE NUMBER	STATION	OFFSET	DESCRIPTION	INSTALL	REMOVE
M1	522+00 SB	20.8' LT	TEMP. CATCH BASIN	STAGE 1	STAGE 2
M2	547+00 SB	17.4' LT	TEMP. CATCH BASIN	STAGE 1	STAGE 2
M3	550+50 SB	21.6' LT	TEMP. CATCH BASIN	STAGE 1	STAGE 2
M4	512+00 SB	26.9' LT	TEMP. INLET BOX	STAGE 2	STAGE 2A
M5*	543+88 SB	16.6' LT	ADJUST CATCH BASIN #317	STAGE 2	STAGE 2A

\*ADJUSTMENT OF CATCH BASIN #317 SHALL BE INCIDENTAL TO THE COST OF CONSTRUCTING CATCH BASIN #317 AS INDICATED IN THE DRAINAGE STRUCTURE SCHEDULE.

**CONSTRUCTION STAGING NOTES:**

**PRESTAGE**

INSTALL STORM SEWER #33 AND #32 IN MEDIAN OF US 41

CONSTRUCT TEMPORARY PAVEMENT AND TEMPORARY SIDEWALK ON IL 132 AS SHOWN ON PLANS

INSTALL TEMPORARY TRAFFIC CONTROL MEASURES FOR STAGE 1 CONSTRUCTION

**STAGE 1**

CONSTRUCT DETOUR SIGNING AS SHOWN ON THE PLAN AND CLOSE ALL RAMPS

REMOVE TRAFFIC SIGNALS AT US 41/IL 132 INTERCHANGE

CONSTRUCT TEMPORARY PAVEMENT AND REMOVE GUARDRAIL IN CROSSOVER LOCATIONS FOR US 41

SHIFT TRAFFIC TO EXISTING NORTHBOUND US 41 LANES

CONSTRUCT THE SOUTHBOUND US 41 LANES AND RESURFACE AS SHOWN ON THE PLAN

CONSTRUCT SOUTHBOUND SIDE OF STRUCTURE #049-0209 AND RETAINING WALLS J, K, N, AND O. SEE STAGING PLAN IN STRUCTURAL PLANS.

ALLOW UTILITY RELOCATION AND/OR ADJUSTMENTS

CONSTRUCT THE MAIN DRAIN SEWER AND JUNCTION BOX ALONG IL 132 AS SHOWN ON THE PLAN

CONSTRUCT WESTBOUND IL 132 LANES AND TEMPORARY PAVEMENT AS SHOWN ON THE PLAN

INSTALL TEMPORARY TRAFFIC CONTROL MEASURES FOR STAGE 1A CONSTRUCTION

**STAGE 1A**

RESURFACE SOUTHBOUND US 41 AS SHOWN ON THE PLAN

CONSTRUCT TEMPORARY PAVEMENT IN CROSSOVER LOCATIONS FOR US 41

CONSTRUCT WESTBOUND IL 132 LANE AS SHOWN ON THE PLAN

INSTALL TEMPORARY TRAFFIC CONTROL MEASURES FOR STAGE 1B CONSTRUCTION

**GENERAL NOTES (CONTINUED):**

THE CONTRACTOR SHALL MAINTAIN ACCESS TO ALL DRIVEWAYS AND SIDE STREETS DURING CONSTRUCTION. TEMPORARY ACCESS CLOSURES WILL BE ALLOWED ONLY AT THE DIRECTION OF THE ENGINEER.

ALL ADVANCE WARNING SIGNS FOR THE PROJECT SHALL BE INSTALLED PRIOR TO THE START OF CONSTRUCTION.

THE CONTRACTOR SHALL OBTAIN WRITTEN APPROVAL OF THE ENGINEER FOR ANY METHODS OF TRAFFIC CONTROL AND PROTECTION DIFFERENT THAN THAT SHOWN ON THE PLANS. NO ADDITIONAL COMPENSATION WILL BE ALLOWED TO THE CONTRACTOR.

THE CONTRACTOR SHALL NOT CHANGE THE CONSTRUCTION STAGING PLANS WITHOUT WRITTEN APPROVAL OF THE ENGINEER AND I.D.O.T. AND ANY ADDITIONAL COSTS RESULTING FROM AN APPROVED CHANGE SHALL BE BORNE BY THE CONTRACTOR.

SEE MAINTENANCE OF TRAFFIC PLANS FOR LOCATION OF TEMPORARY CONCRETE BARRIER WALL.

SEE STRUCTURAL PLANS FOR STAGED CONSTRUCTION OF US 41 BRIDGE OVER IL 132.

ADVANCED SIGNING FOR ALL LANE CLOSURES TO FOLLOW IDOT STANDARD 701400.

ALL CROSSOVERS ARE TO FOLLOW IDOT STANDARD 701416.

ALL TEMPORARY SEWER AND INLET CONNECTIONS SHALL BE INCIDENTAL TO THE COST OF CONSTRUCTION TEMPORARY DRAINAGE STRUCTURES.

SCHEMATICS ONLY TO BE USED TO LOCATE TRAFFIC DURING EACH STAGE OF CONSTRUCTION. NOT TO BE REFERENCED FOR LOCATION OF ROADWAY, DRAINAGE, OR STRUCTURAL ITEMS.

**TEMPORARY STORM SEWER SCHEDULE**

PIPE NUMBER	LENGTH (FT)	DIA. (IN)	DESCRIPTION	INSTALL	REMOVE
M1	17.0	-	TIE INTO EXIST. MANHOLE	STAGE 1	STAGE 2
M2	1.0	-	TIE INTO EXIST. STORM SEWER	STAGE 1	STAGE 2
M3	2.5	-	TIE INTO EXISTING STORM SEWER	STAGE 1	STAGE 2
M4	200.0	-	RUN UNDER TEMP. CROSSOVER PVMT	STAGE 2	STAGE 2A
M5	10.4	-	STORM SEWER 317	STAGE 2	STAGE 2A

**CONSTRUCTION STAGING NOTES (CONTINUED):**

**STAGE 1B**

CONSTRUCT WESTBOUND IL 132 LANES AS SHOWN ON THE PLAN

INSTALL TEMPORARY TRAFFIC CONTROL MEASURES FOR STAGE 2 CONSTRUCTION

**STAGE 2**

CONSTRUCT TEMPORARY PAVEMENT IN CROSSOVER LOCATIONS FOR US 41

CLOSE GRANDVILLE AVE EAST OF RAILROAD AS SHOWN ON PLAN AND CONSTRUCT DETOUR SIGNING AS SHOWN BELOW

SHIFT TRAFFIC TO SOUTHBOUND US 41 LANES

CONSTRUCT NORTHBOUND US 41 LANES AND RESURFACE AS SHOWN ON THE PLAN

CONSTRUCT NORTHBOUND SIDE OF STRUCTURE #049-0209 AND RETAINING WALLS L, M, P AND Q. SEE STAGING PLAN IN STRUCTURAL PLANS.

CONSTRUCT EASTBOUND IL 132 LANES AS SHOWN ON THE PLAN

INSTALL TEMPORARY TRAFFIC CONTROL MEASURES FOR STAGE 2A CONSTRUCTION

**STAGE 2A**

RESURFACE NORTHBOUND US 41 AS SHOWN ON THE PLAN

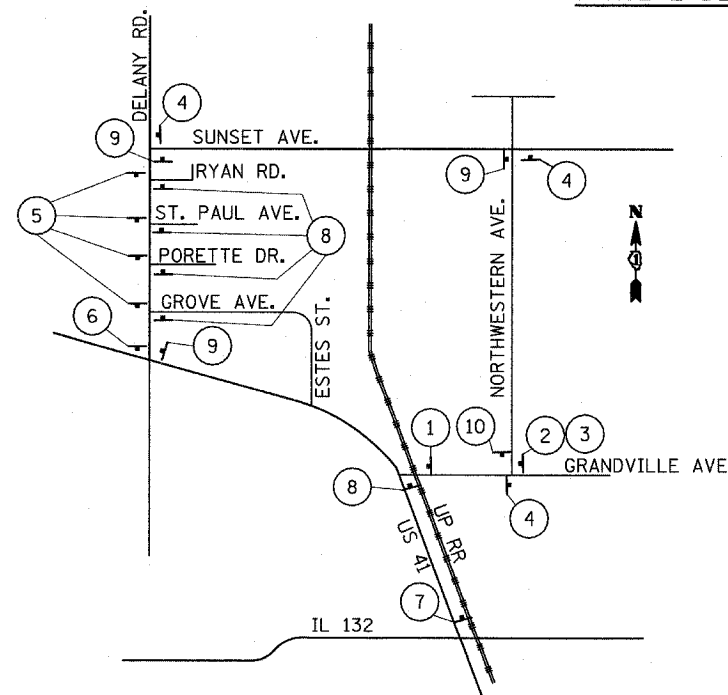
INSTALL GUARDRAIL ON SOUTHBOUND US 41

CONSTRUCT EASTBOUND IL 132 LANE AS SHOWN ON THE PLAN

F.A.P. RTE.	SECTION	COUNTY	TOTAL SHEETS	SHEET NO.
346		LAKE	469	66
STA.	TO STA.			
FED. ROAD DIST. NO. D-91-404-99	ILLINOIS	FED. AID PROJ. NO.		
125X-HB-(1&2) R-1			CONTRACT # 601	

**SIGNING LEGEND**

**STAGE 2 DETOUR AT GRANDVILLE AVE**



NOT TO SCALE

REVISIONS	
NAME	DATE

ILLINOIS DEPARTMENT OF TRANSPORTATION  
 U.S. 41 (SKOKIE HIGHWAY)  
 AT IL ROUTE 132  
 TRAFFIC CONTROL STAGING  
 GENERAL NOTES, SIGNING LEGEND  
 CONSTRUCTION STAGING NOTES  
 SCALE: NONE  
 DATE: MAY 12, 2008  
 DRAWN BY:  
 CHECKED BY: