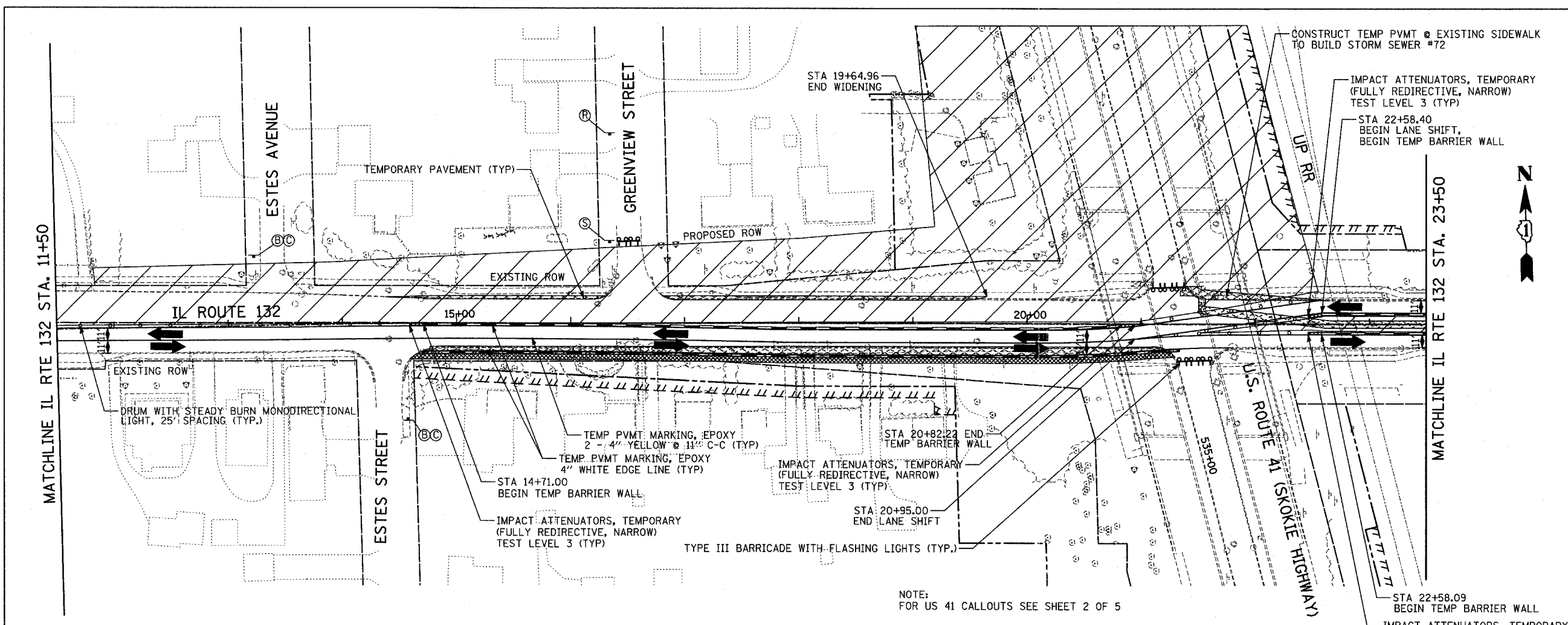


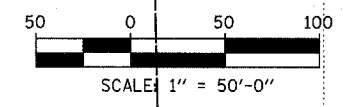
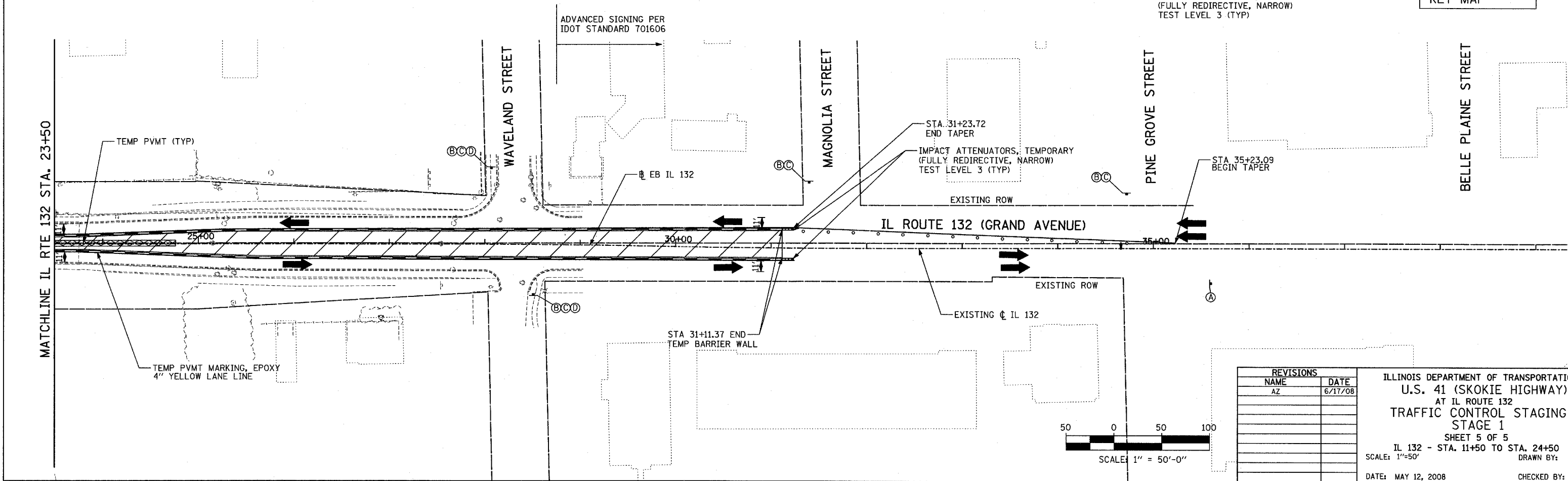
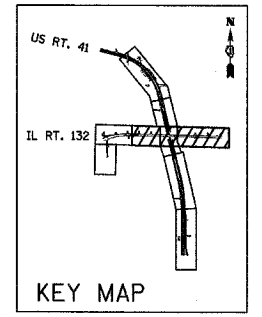
F.A.P. RTE.	SECTION	COUNTY	TOTAL SHEETS	SHEET NO.
346		LAKE	469	45
STA.	TO STA.		FED. ROAD DIST. NO. D-91-404-99	ILLINOIS
			FED. AID PROJ. NO. 125X-HB-(1&2) R-1	CONTRACT NO. 608

PLAN	SURVEYED	DATE
	BY	
	NOTED	
	NOTED	
	NOTED	
	NOTED	

PROFILE	SURVEYED	DATE
	BY	
	NOTED	
	NOTED	
	NOTED	
	NOTED	



- LEGEND:**
- WORK AREA
  - 10" TEMPORARY PAVEMENT
  - 4" TEMPORARY SIDEWALK
  - TEMPORARY CONCRETE BARRIER
  - DIRECTION OF TRAFFIC FLOW
  - DRUM WITH STEADY BURN MONODIRECTIONAL LIGHT
  - DIRECTION INDICATOR BARRICADE WITH STEADY BURN MONODIRECTIONAL LIGHT
  - VERTICAL PANEL (BACK TO BACK)
  - TYPE III BARRICADE WITH FLASHING LIGHTS
  - FLEXIBLE DELINEATOR
  - TEMPORARY IMPACT ATTENUATOR
  - ARROW BOARD



REVISIONS	
NAME	DATE
AZ	6/17/08

ILLINOIS DEPARTMENT OF TRANSPORTATION  
 U.S. 41 (SKOKIE HIGHWAY)  
 AT IL ROUTE 132  
 TRAFFIC CONTROL STAGING  
 STAGE 1  
 SHEET 5 OF 5  
 IL 132 - STA. 11+50 TO STA. 24+50  
 SCALE: 1"=50'  
 DATE: MAY 12, 2008  
 DRAWN BY:  
 CHECKED BY: