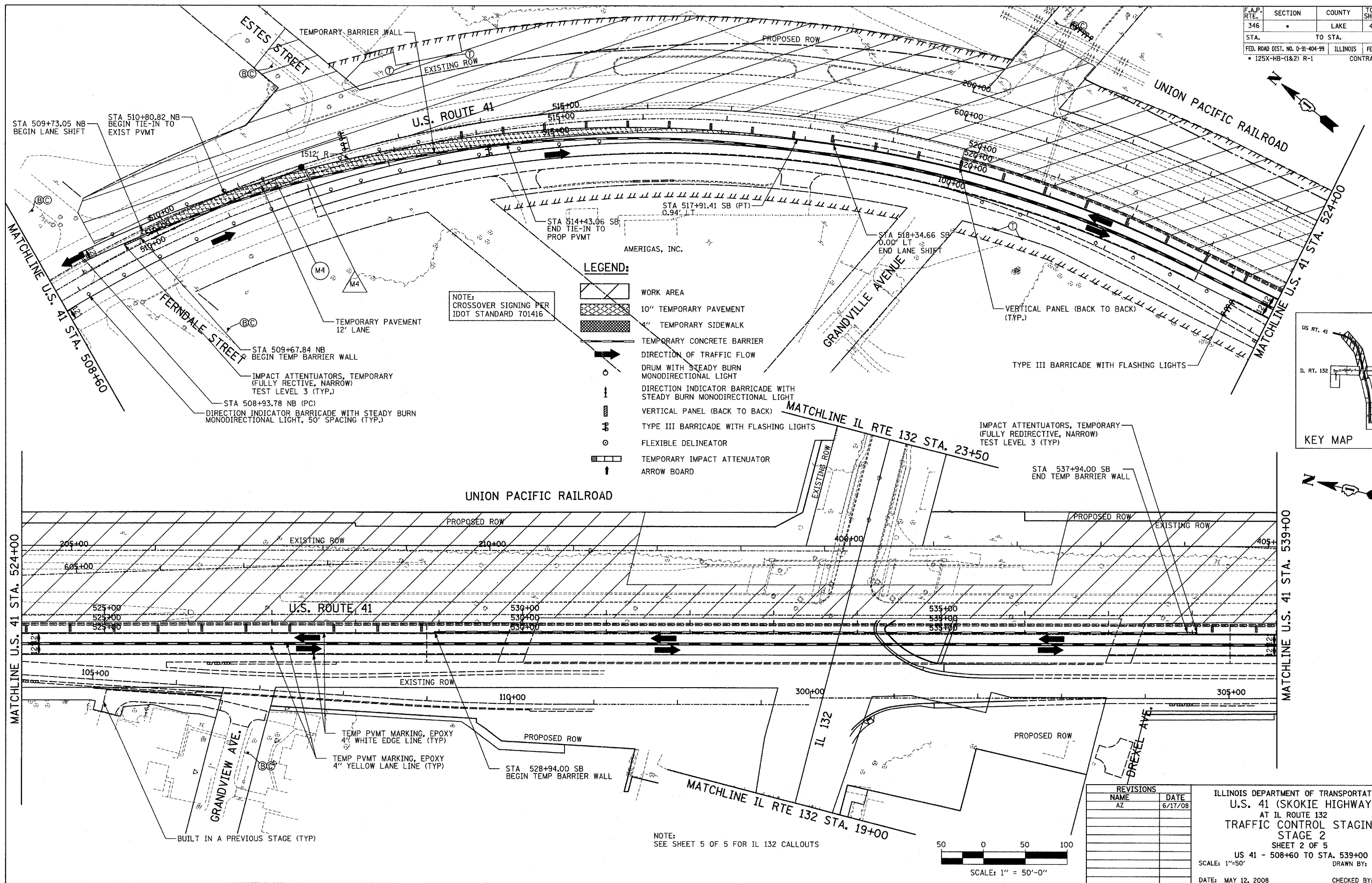


F.A.P. RTE.	SECTION	COUNTY	TOTAL SHEETS	SHEET NO.
346	.	LAKE	469	02
STA.	TO STA.		FED. ROAD DIST. NO. D-91-404-99	ILLINOIS
			FED. AID PROJECT	CONTRACT # 6082

PLAN	SURVEYED	DATE
	PLOTTED	
	ALIGNED	
	CHECKED	
	CADD FILE NAME	

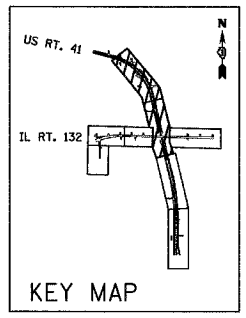
PROFILE	SURVEYED	DATE
	PLOTTED	
	GRADES CHECKED	
	STRUCTURE NOTATIONS CHECKED	



LEGEND:

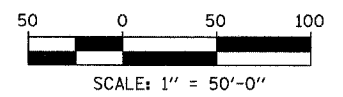
- WORK AREA
- 10" TEMPORARY PAVEMENT
- 4" TEMPORARY SIDEWALK
- TEMPORARY CONCRETE BARRIER
- DIRECTION OF TRAFFIC FLOW
- DRUM WITH STEADY BURN MONODIRECTIONAL LIGHT
- DIRECTION INDICATOR BARRICADE WITH STEADY BURN MONODIRECTIONAL LIGHT
- VERTICAL PANEL (BACK TO BACK)
- TYPE III BARRICADE WITH FLASHING LIGHTS
- FLEXIBLE DELINEATOR
- TEMPORARY IMPACT ATTENUATOR
- ARROW BOARD

NOTE: CROSSOVER SIGNING PER IDOT STANDARD 701416



REVISIONS	
NAME	DATE
AZ	6/17/08

ILLINOIS DEPARTMENT OF TRANSPORTATION
 U.S. 41 (SKOKIE HIGHWAY)
 AT IL ROUTE 132
 TRAFFIC CONTROL STAGING
 STAGE 2
 SHEET 2 OF 5
 US 41 - 508+60 TO STA. 539+00
 SCALE: 1" = 50'-0"
 DATE: MAY 12, 2008
 DRAWN BY:
 CHECKED BY:



NOTE: SEE SHEET 5 OF 5 FOR IL 132 CALLOUTS