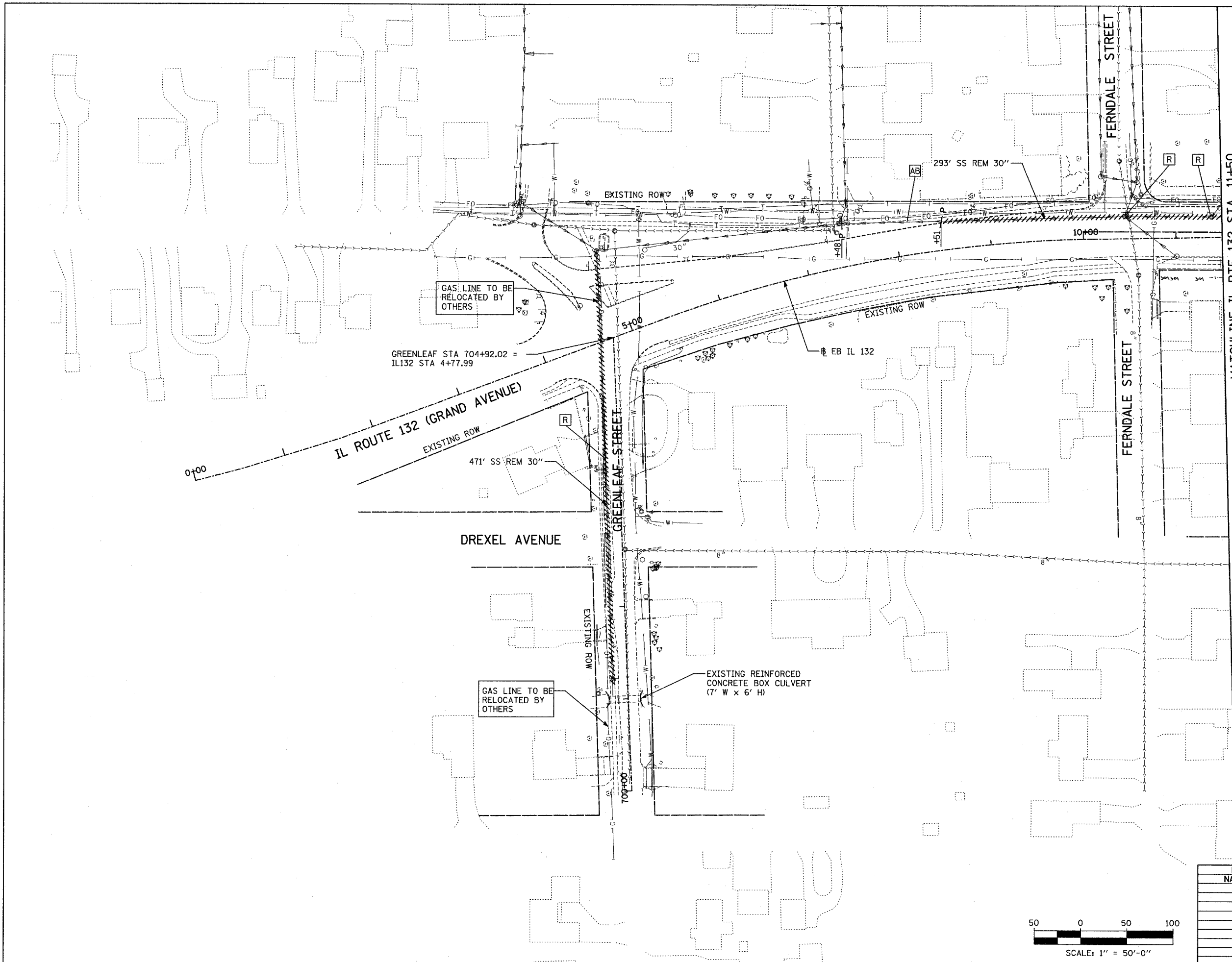


F.A.P. RTE.	SECTION	COUNTY	TOTAL SHEETS	SHEET NO.
346	•	LAKE	469	97
STA.	TO STA.			
FED. ROAD DIST. NO. D-91-404-99	ILLINOIS	FED. AID PROJ. NO.		
• 125X-HB-(1&2) R-1			CONTRACT # 608	



PLAN	DATE
BY _____	_____
DATE _____	_____
NO. _____	_____

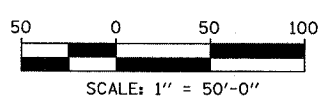
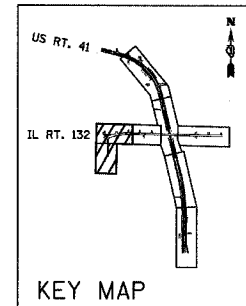
PROFILE	DATE
BY _____	_____
DATE _____	_____
NO. _____	_____



MATCHLINE IL RTE 132 STA. 11+50

- LEGEND:**
- EXISTING SANITARY SEWER
 - EXISTING STORM SEWER
 - UTILITY REMOVAL
 - UTILITY REMOVAL PLUG
 - EXISTING DITCH

- NOTES:**
1. ALL SANITARY SEWERS AND STRUCTURES TO REMAIN IN SERVICE AT ALL TIMES.
 2. SEE GENERAL NOTES FOR TEMPORARY DRAINAGE.
 3. ALL TRENCHES FOR REMOVED SEWERS THAT FALL UNDER PROPOSED PAVEMENT SHALL BE BACKFILLED WITH TRENCH BACKFILL. ALL QUANTITIES ARE INCLUDED IN THE PAY ITEM "TRENCH BACKFILL."



REVISIONS	
NAME	DATE

ILLINOIS DEPARTMENT OF TRANSPORTATION
 U.S. 41 (SKOKIE HIGHWAY)
 AT IL ROUTE 132
 EXISTING AND REMOVAL
 DRAINAGE PLAN
 SHEET 3 OF 4
 GREENLEAF STREET
 IL 132 - STA. 4+25.12 TO STA. 11+50
 SCALE: 1"=50' DRAWN BY: NSB
 DATE: MAY 12, 2008 CHECKED BY: DA