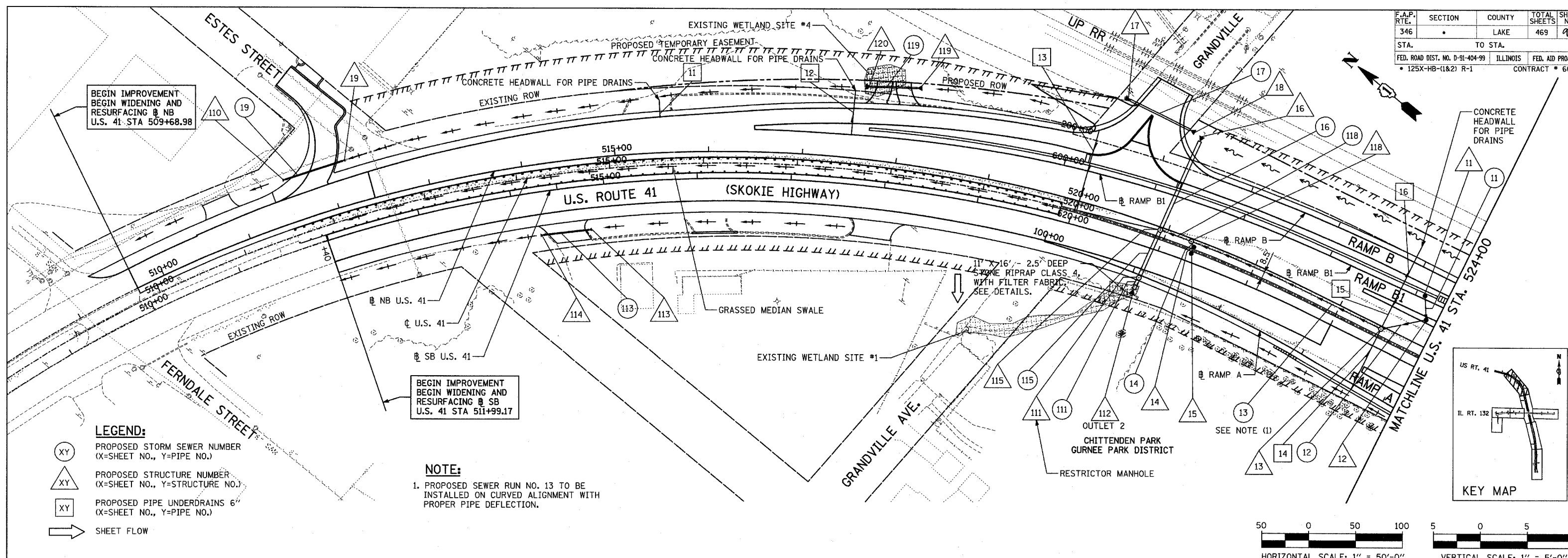


F.A.P. RTE.	SECTION	COUNTY	TOTAL SHEETS	SHEET NO.
346		LAKE	469	99
STA.	TO STA.			
FED. ROAD DIST. NO. D-91-404-99	ILLINOIS	FED. AID PROJ. NO.		
• 125X-HB-(1&2) R-1		CONTRACT # 608		

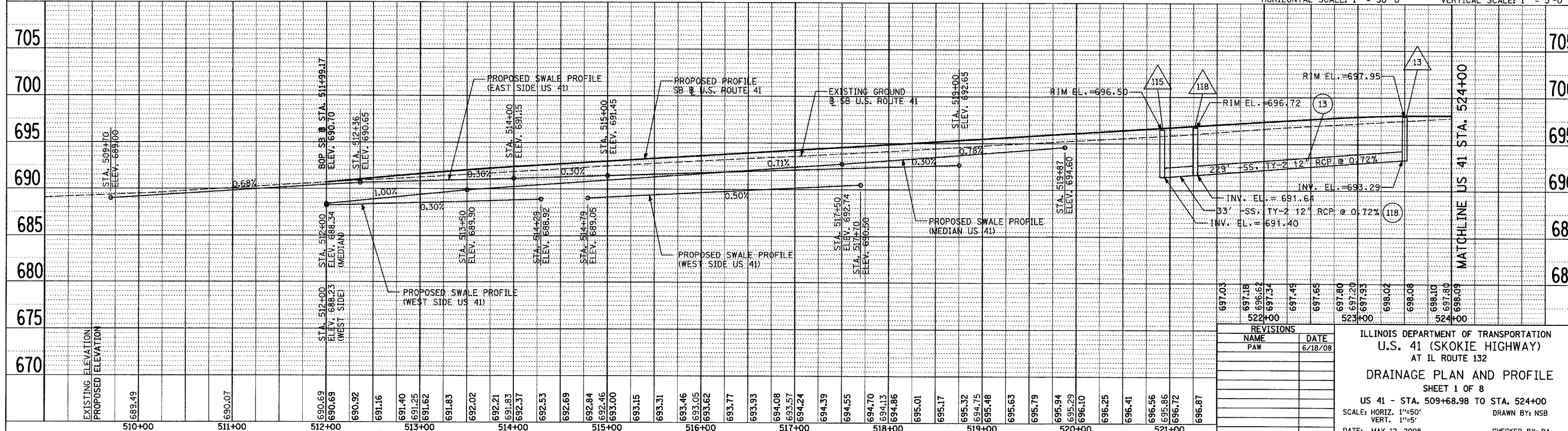
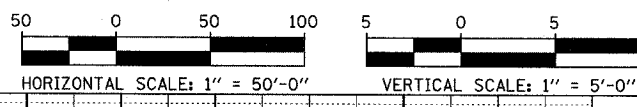


**LEGEND:**

- (XY) PROPOSED STORM SEWER NUMBER (X=SHEET NO., Y=PIPE NO.)
- (XY) PROPOSED STRUCTURE NUMBER (X=SHEET NO., Y=STRUCTURE NO.)
- (XY) PROPOSED PIPE UNDERDRAINS 6" (X=SHEET NO., Y=PIPE NO.)
- ➔ SHEET FLOW

**NOTE:**

1. PROPOSED SEWER RUN NO. 13 TO BE INSTALLED ON CURVED ALIGNMENT WITH PROPER PIPE DEFLECTION.



REVISIONS	
NAME	DATE
PAW	6/18/08

ILLINOIS DEPARTMENT OF TRANSPORTATION  
 U.S. 41 (SKOKIE HIGHWAY)  
 AT IL ROUTE 132  
 DRAINAGE PLAN AND PROFILE  
 SHEET 1 OF 8  
 US 41 - STA. 509+68.98 TO STA. 524+00  
 SCALE: HORIZ. 1"=50'  
 VERT. 1"=5'  
 DATE: MAY 12, 2008  
 DRAWN BY: NSB  
 CHECKED BY: DA

DATE	
BY	
REVISIONS	
NO.	
DESCRIPTION	
DATE	
BY	
DATE	
BY	

DATE	
BY	
REVISIONS	
NO.	
DESCRIPTION	
DATE	
BY	
DATE	
BY	