

NOTES:

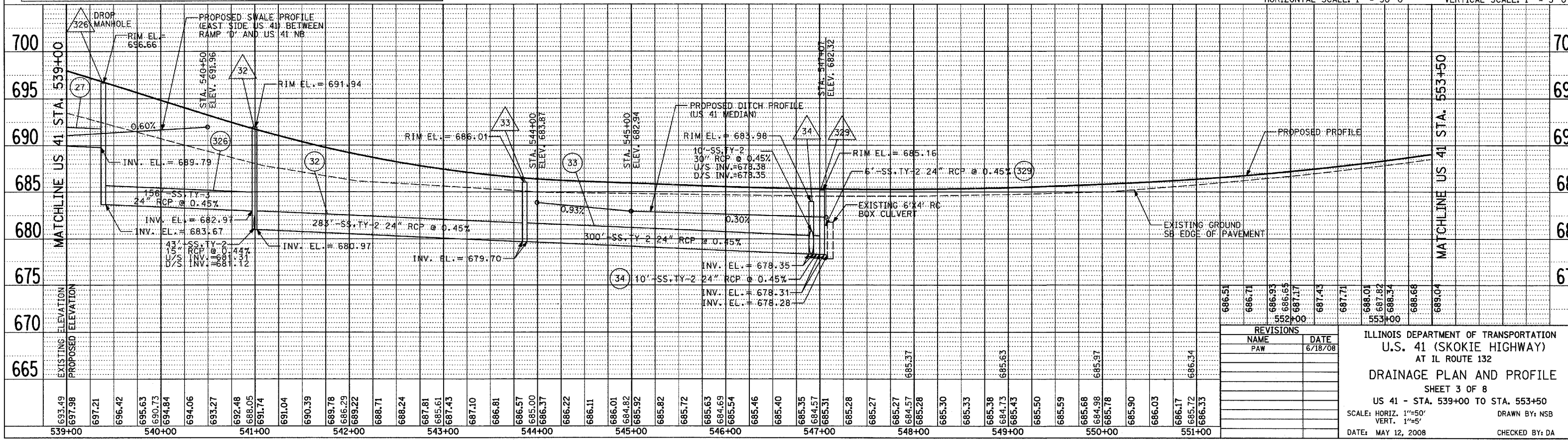
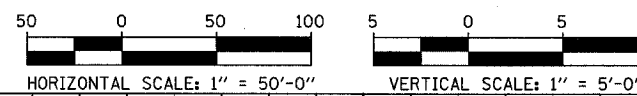
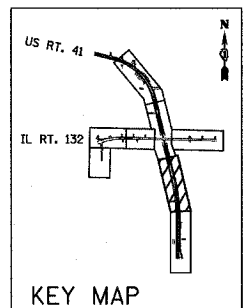
- EXISTING PILING TO BE REMOVED AS NECESSARY TO ACCOMMODATE THE INSTALLATION OF DRAINAGE STRUCTURES AND STORM SEWERS. COST IS INCLUDED IN THE UNIT BID PRICE OF "REMOVAL OF EXISTING STRUCTURES NO. 1" & "REMOVAL OF EXISTING STRUCTURES NO. 2". SEE ALSO SHEET 1 OF 4 EXISTING REMOVAL GRADINGS PLANS.
- CORE DRILL AND CONNECT TO EXISTING REINFORCED CONCRETE CULVERT. CONSTRUCTION COST SHALL BE INCLUDED IN THE COST TO CONSTRUCT THE STORM SEWER.

33' X 38.5' - 2.5' DEEP STONE RIPRAP CLASS 4, WITH FILTER FABRIC. SEE DETAILS.

SEE STRUCTURAL DRAWINGS FOR BOX CULVERT AND HEADWALL DETAILS

LEGEND:

- (XY) PROPOSED STORM SEWER NUMBER (X=SHEET NO., Y=PIPE NO.)
- (XY) PROPOSED STRUCTURE NUMBER (X=SHEET NO., Y=STRUCTURE NO.)
- (XY) PROPOSED PIPE UNDERDRAINS 6" (X=SHEET NO., Y=PIPE NO.)
- SHEET FLOW



| REVISIONS | | |
|-----------|------|---------|
| NO. | NAME | DATE |
| 1 | PAW | 6/18/08 |

ILLINOIS DEPARTMENT OF TRANSPORTATION
 U.S. 41 (SKOKIE HIGHWAY)
 AT IL ROUTE 132
 DRAINAGE PLAN AND PROFILE
 SHEET 3 OF 8
 US 41 - STA. 539+00 TO STA. 553+50
 SCALE: HORIZ. 1"=50'
 VERT. 1"=5'
 DATE: MAY 12, 2008
 DRAWN BY: NSB
 CHECKED BY: DA