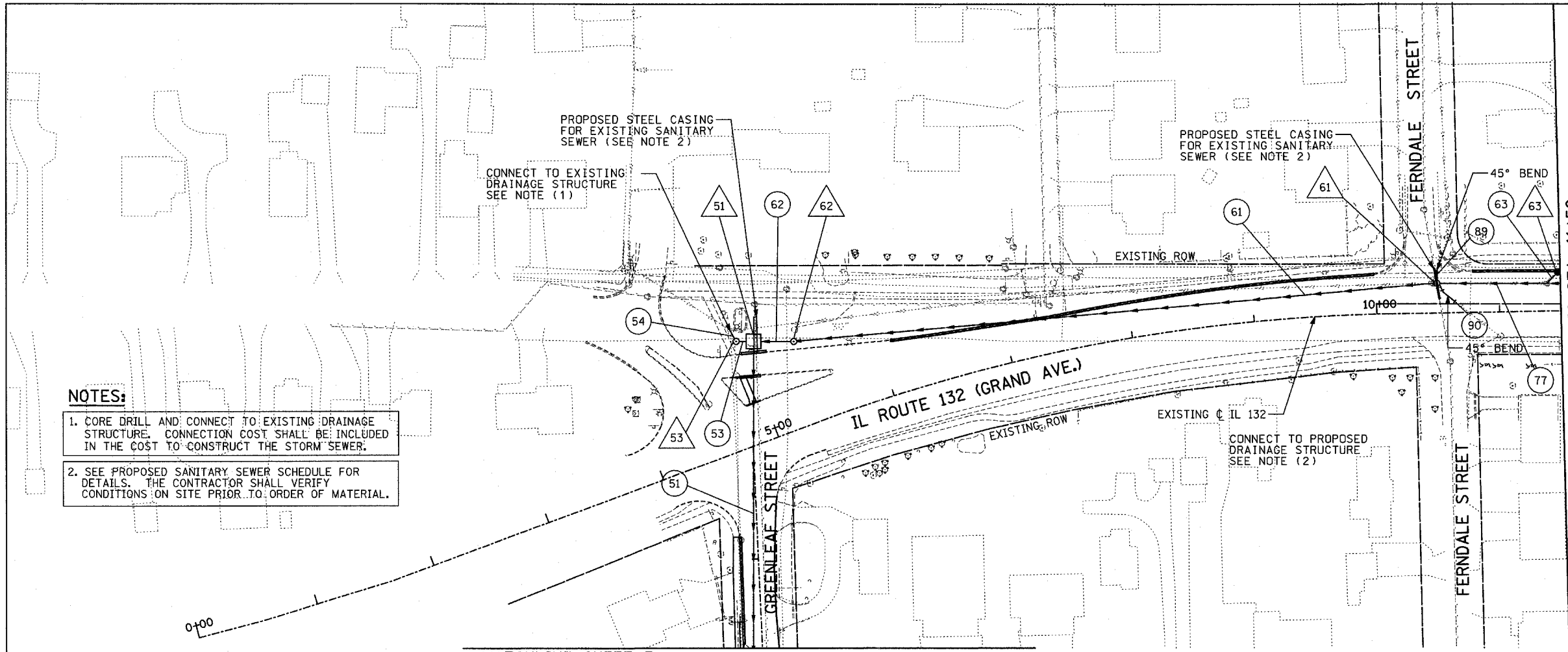


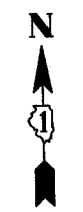
F.A.P. RTE.	SECTION	COUNTY	TOTAL SHEETS	SHEET NO.
346	.	LAKE	469	104
STA.	TO STA.			
FED. ROAD DIST. NO. D-91-404-99	ILLINOIS	FED. AID PROJ. NO.	CONTRACT # 601	
• 125X-HB-(1&2) R-1				

PLAN	SURVEYED	DATE
	PLOTTED	
	CHECKED	
	BY	
	NO.	
	DATE	

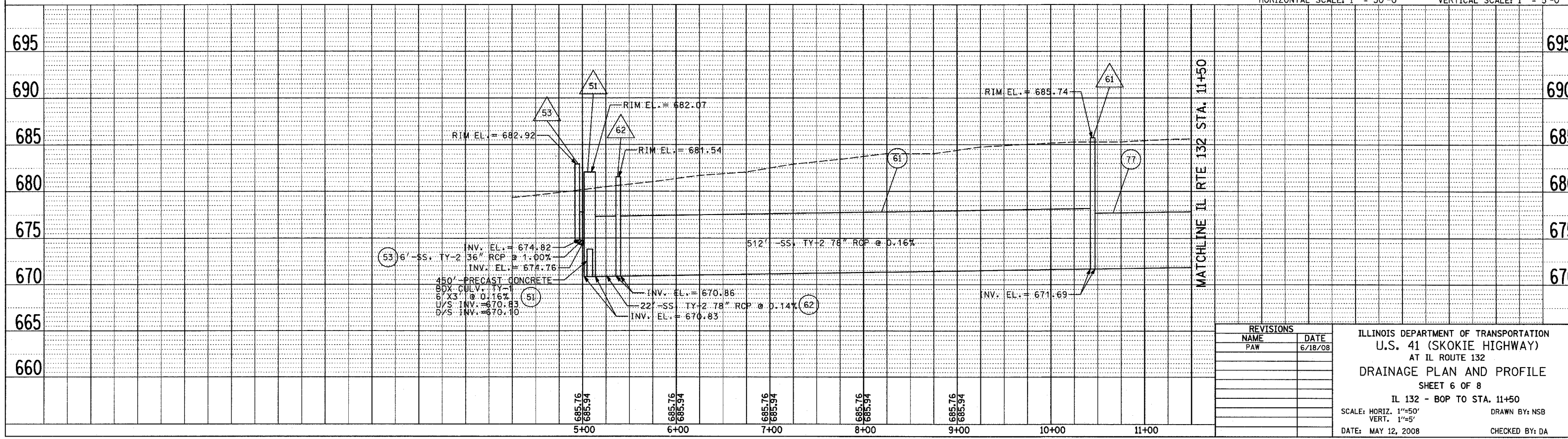
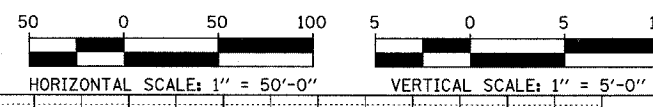
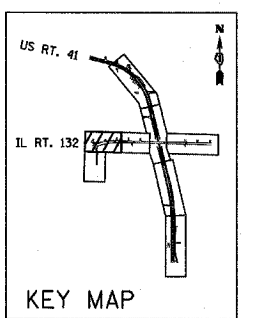
PROFILE	SURVEYED	DATE
	PLOTTED	
	CHECKED	
	BY	
	NO.	
	DATE	



- NOTES:**
- CORE DRILL AND CONNECT TO EXISTING DRAINAGE STRUCTURE. CONNECTION COST SHALL BE INCLUDED IN THE COST TO CONSTRUCT THE STORM SEWER.
  - SEE PROPOSED SANITARY SEWER SCHEDULE FOR DETAILS. THE CONTRACTOR SHALL VERIFY CONDITIONS ON SITE PRIOR TO ORDER OF MATERIAL.



- LEGEND:**
- (XY) PROPOSED STORM SEWER NUMBER (X=SHEET NO., Y=PIPE NO.)
  - △(XY) PROPOSED STRUCTURE NUMBER (X=SHEET NO., Y=STRUCTURE NO.)
  - (XY) PROPOSED PIPE UNDERDRAINS 6" (X=SHEET NO., Y=PIPE NO.)
  - SHEET FLOW



REVISIONS		DATE
NAME		
PAW		6/18/08

ILLINOIS DEPARTMENT OF TRANSPORTATION  
 U.S. 41 (SKOKIE HIGHWAY)  
 AT IL ROUTE 132  
 DRAINAGE PLAN AND PROFILE  
 SHEET 6 OF 8  
 IL 132 - BOP TO STA. 11+50  
 SCALE: HORIZ. 1"=50'  
 VERT. 1"=5'  
 DATE: MAY 12, 2008  
 DRAWN BY: NSB  
 CHECKED BY: DA