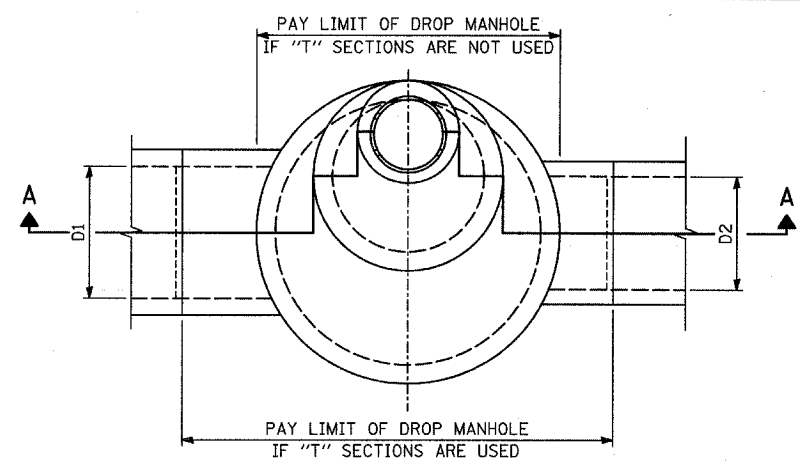
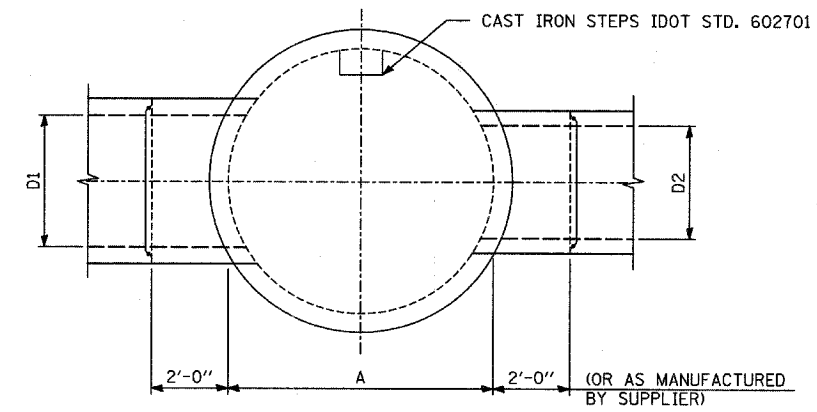


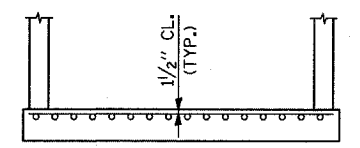
F.A.P. RTE.	SECTION	COUNTY	TOTAL SHEETS	SHE NO.
346	.	LAKE	469	11
STA.	TO STA.			
FED. ROAD DIST. NO. D-91-404-99	ILLINOIS	FED. AID PROJ. NO.		
• 125X-HB-(1&2) R-1		CONTRACT # 60		



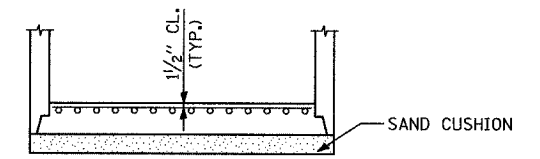
**PLAN VIEW**



**SECTIONAL PLAN**

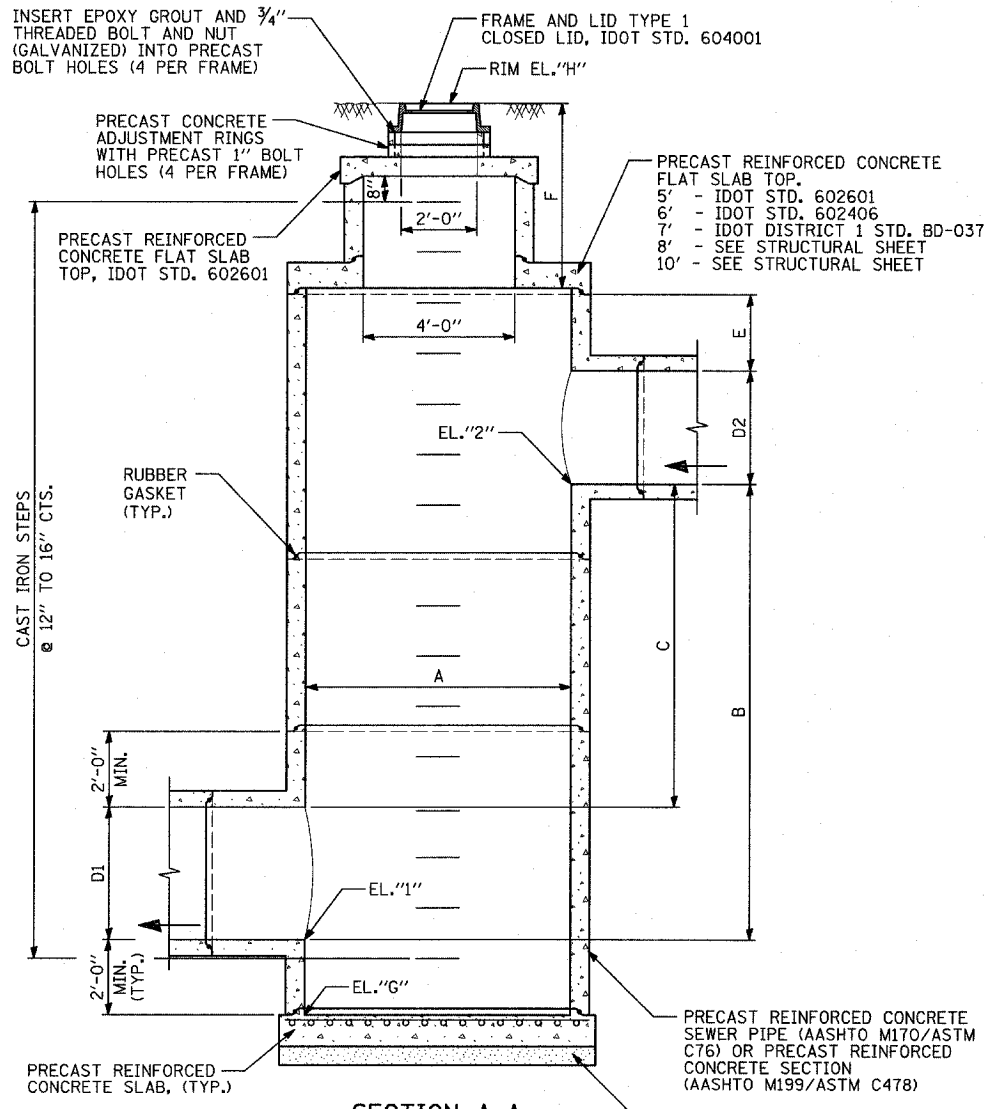


**REINFORCED CAST-IN-PLACE CLASS X CONCRETE**



**PREFABRICATED REINFORCED CONCRETE SLAB WHEN THE PRECAST REINFORCED CONCRETE SECTIONS ALTERNATE IS USED WITH SAND CUSHION**

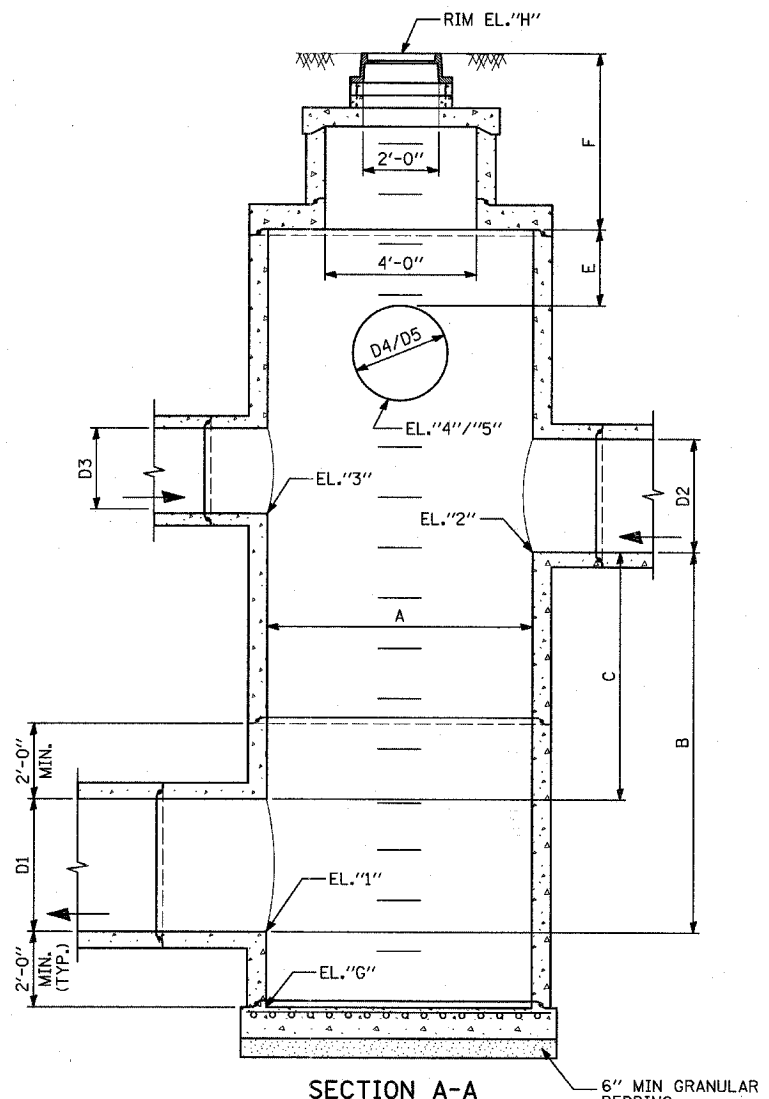
**ALTERNATE BOTTOM SLAB**



**SECTION A-A**

**DROP MANHOLE TYPE 1**

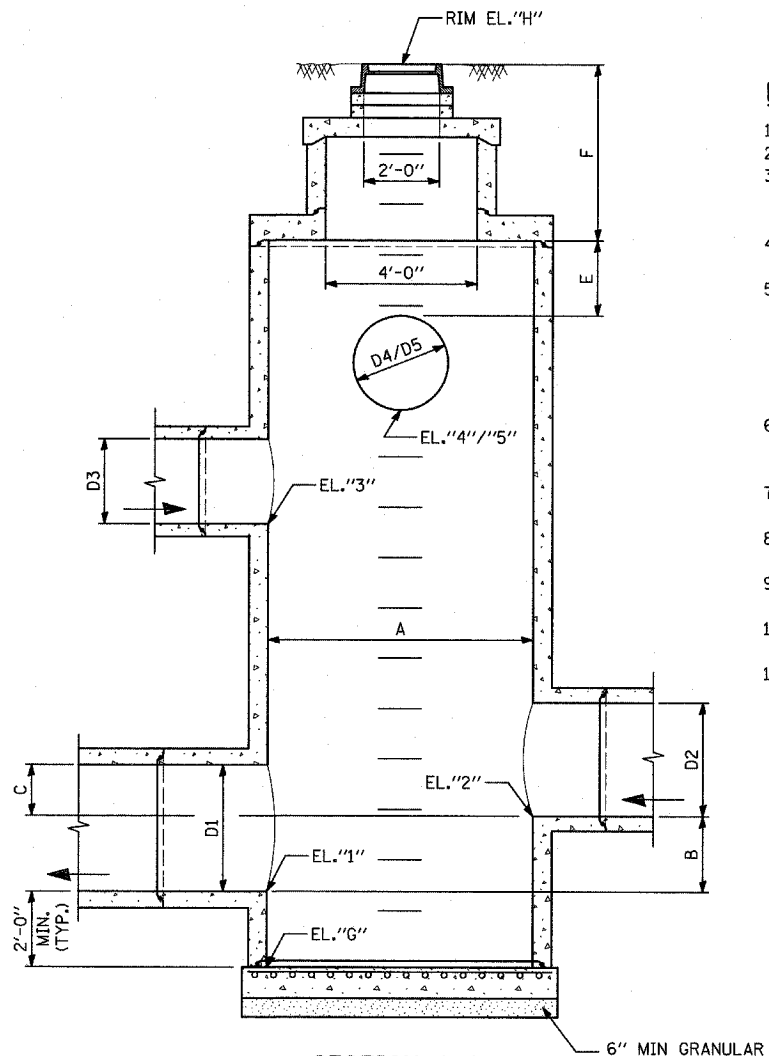
(SEE NOTE 11)



**SECTION A-A**

**DROP MANHOLE TYPE 2**

(SEE NOTE 9 & 11)



**SECTION A-A**

**DROP MANHOLE TYPE 3**

(SEE NOTES 10 & 11)

**NOTES:**

- 1) ALL DIMENSIONS ARE INSIDE DIMENSIONS.
- 2) UTILIZE PIPE "T" SECTIONS WHENEVER AVAILABLE.
- 3) PRESET PIPE OPENINGS IN PRECAST REINFORCED CONCRETE SECTIONS IF "T" SECTIONS AND SPECIAL FITTINGS ARE NOT AVAILABLE.
- 4) ROTATE FLAT SLAB AND MANHOLE RISER SO STEPS AVOID STORM SEWER OPENINGS.
- 5) CAST IRON STEPS SHALL BE GRAY IRON CONFORMING TO THE REQUIREMENTS OF ARTICLE 1006.14 OF THE STANDARD SPECIFICATIONS. STEPS SHALL BE EMBEDDED INTO THE WALL A MINIMUM OF THREE (3) INCHES. STEPS SHALL NOT BE EXTENDED ON THE OUTSIDE.
- 6) JOINT CONFIGURATION AND DIMENSIONS OF FLAT SLAB TOP SHALL MATCH AND FIT THE RISER JOINT DETAIL.
- 7) LIFTING DEVICES SHALL BE APPROVED BY THE ENGINEER.
- 8) ALL WORK SHALL BE AS PER AASHTO REQUIREMENTS. ASTM IS LISTED AS SUPPLEMENTARY.
- 9) SIMILAR TO TYPE 1, ALSO WITH SEWERS D3, D4 AND D5.
- 10) SIMILAR TO TYPE 1, ALSO WITH SEWERS D3, D4, D5 AND LOWER D2.
- 11) DROP MANHOLE TYPE 1 AND TYPE 3 ARE NOT USED ON THIS PROJECT.

**SCHEDULE NOTE:**  
 (1) INVERT ELEVATION, SIZE AND DEPTH INDICATED, IS ASSUMED BASED ON A 6" DEPTH FROM RIM TO PIPE INVERT. THEREFORE DUE TO LACK OF FIELD SURVEY DATA, THE CONTRACTOR SHALL VERIFY INFORMATION IN FIELD PRIOR TO ORDER OF MATERIAL. THE COST OF THIS FIELD VERIFICATION SHALL BE INCLUDED WITH THE COST OF CONSTRUCTION OF A DROP MANHOLE.

STRUCT NUMBER	TYPE	LOCATION	STATION	OFFSET	DIMENSIONS										ELEVATIONS (FT)							
					A (FT)	B (FT)	C (FT)	D1 (IN)	D2 (IN)	D3 (IN)	D4 (IN)	D5 (IN)	E (FT)	F (FT)	1	2	3	4	5	G	H	
24	2	RAMP A	107+26.35	21.81 LT	6	7.50	5.50	24	24	-	-	-	2	3.72	680.25	687.75	-	-	-	678.25	695.47	
25	2	RAMP A	110+26.38	38.8 LT	6	4.79	2.79	24	24	-	12	12	2	2.89	674.73	679.52	-	679.40	680.13	672.73	685.02	
82	2	IL 132	27+53.91	0.5 LT	7	5.00	2.00	36	30	-	12(1)	12(1)	2	4.02(1)	675.40	680.40	-	684.50(1)	684.50(1)	673.40	690.52	
326	2	NB US 41	539+39.35	3.0 RT	7	6.12	4.12	24	24	-	12	-	2	3.71	683.67	689.79	-	690.95	-	681.67	696.66	

REVISIONS	
NAME	DATE

ILLINOIS DEPARTMENT OF TRANSPORTATION  
 U.S. 41 (SKOKIE HIGHWAY)  
 AT IL ROUTE 132  
**DRAINAGE STRUCTURE DETAILS**  
**DROP MANHOLE**  
 SCALE: NONE  
 DATE: MAY 12, 2008  
 DRAWN BY: NSB  
 CHECKED BY: DA