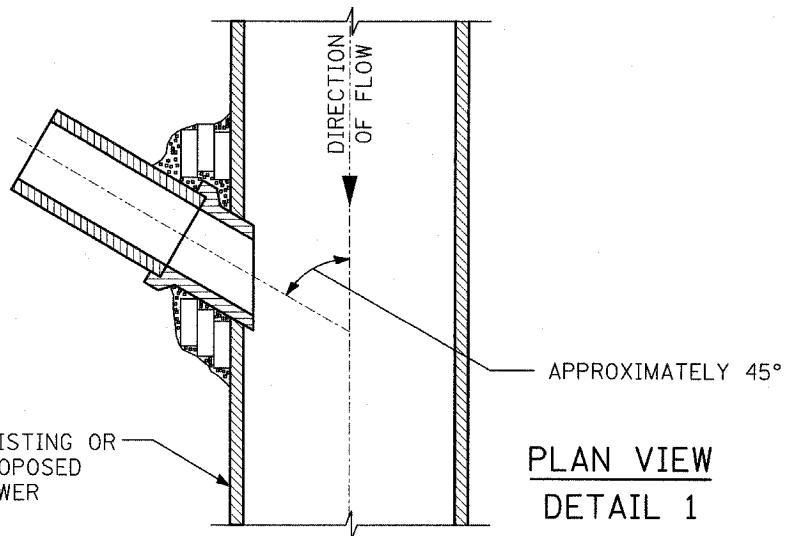


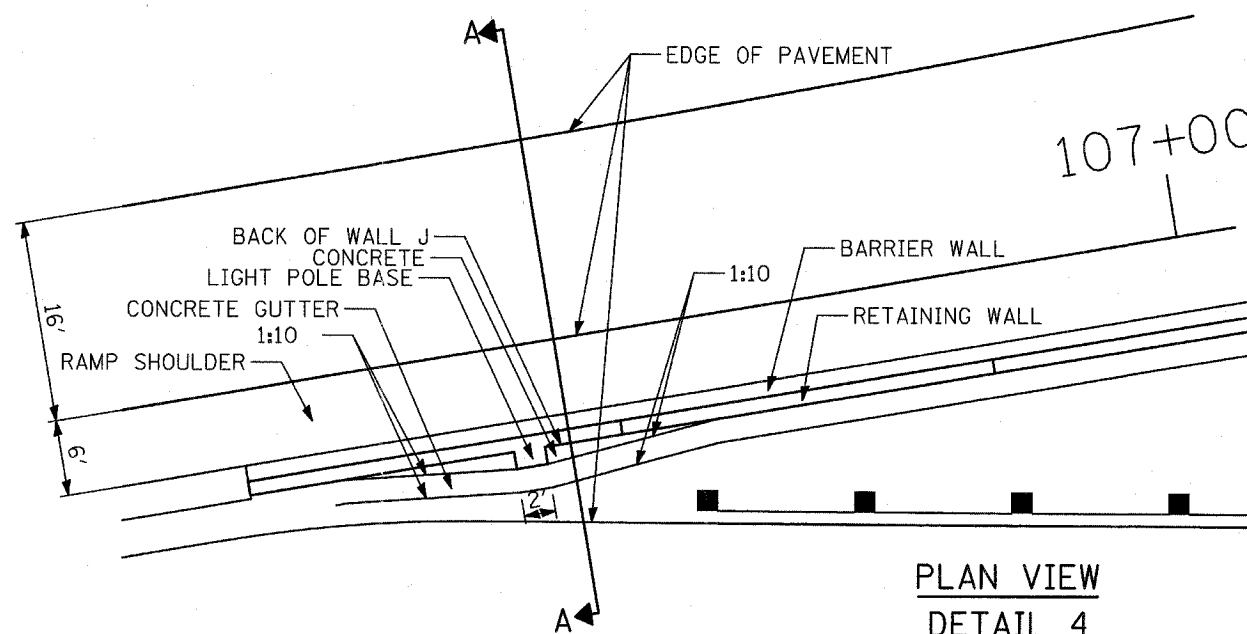
DETAIL OF PROPOSED STORM SEWER CONNECTIONS TO EXISTING/PROPOSED SEWER

F.A.P. RTE. 346	SECTION *	COUNTY LAKE	TOTAL SHEETS 469	SHEET NO. 112
STA. _____	TO STA. _____		FED. ROAD DIST. NO. D-91-404-99	ILLINOIS
FED. AID PROJ. NO. _____			CONTRACT # 608	

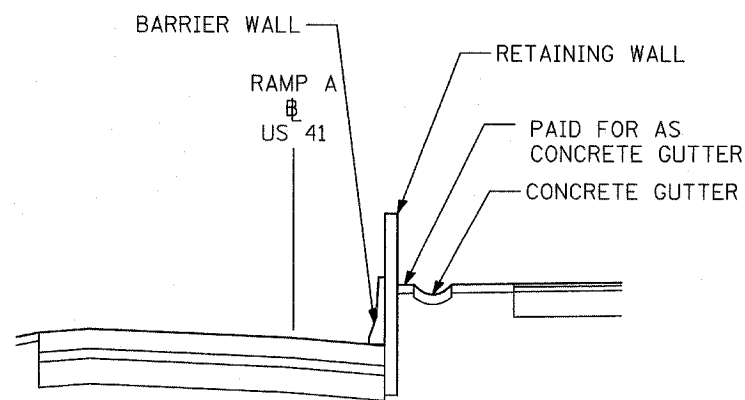


**PLAN VIEW
DETAIL 1**

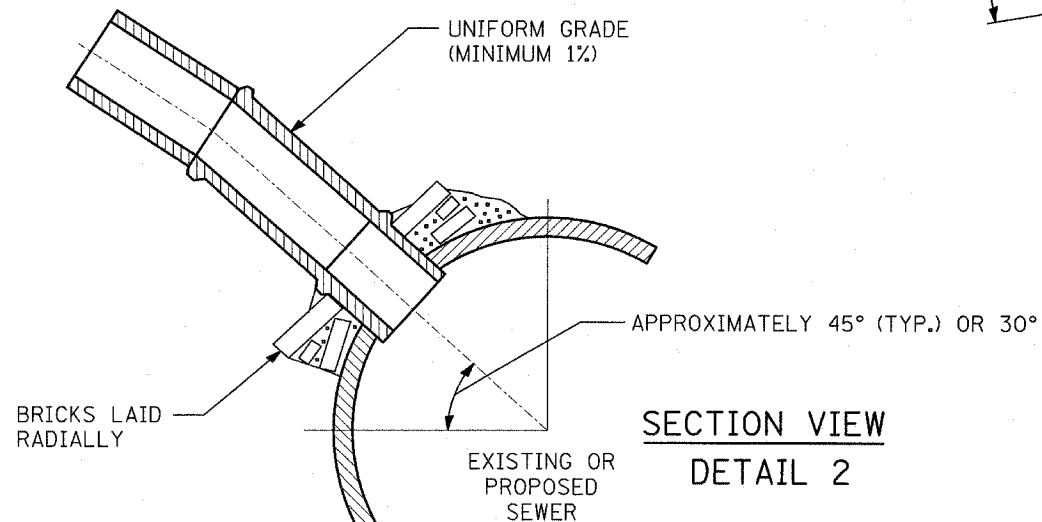
DETAIL OF PROPOSED CONCRETE GUTTER ALONG LIGHT POLE BASE



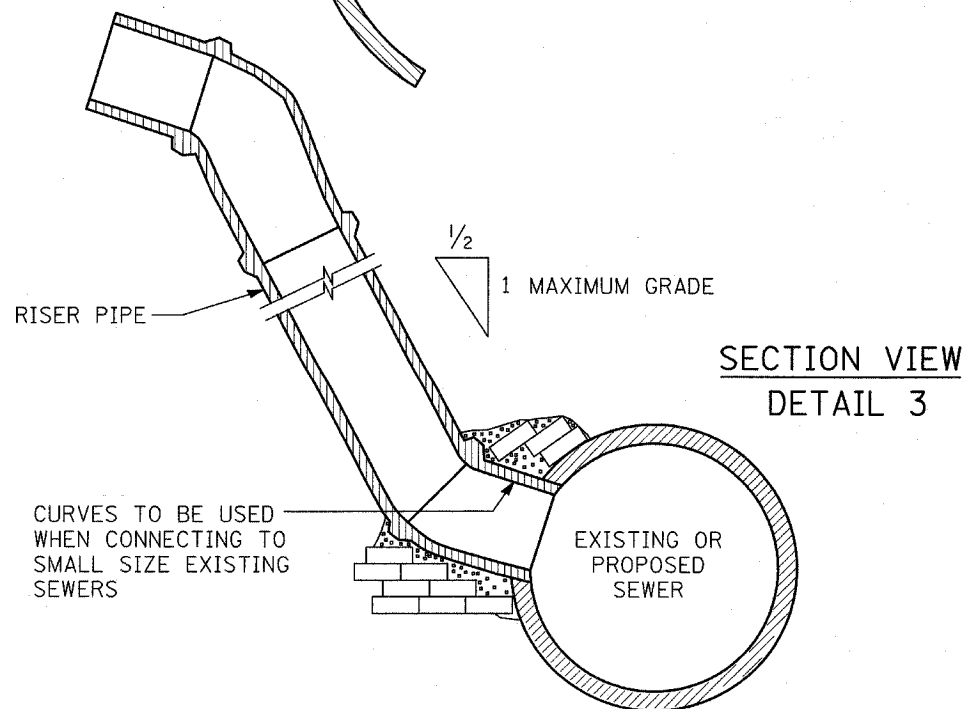
**PLAN VIEW
DETAIL 4**



**SECTION A-A VIEW
DETAIL 4**



**SECTION VIEW
DETAIL 2**



**SECTION VIEW
DETAIL 3**

NOTES:

DESCRIPTION:

ALL CATCH BASIN CONNECTIONS SHALL BE 12 INCH STORM SEWER PIPE, UNLESS SHOWN OR SPECIFIED OTHERWISE ON PLAN SHEETS.

CONSTRUCTION METHODS:

1. CONNECTION TO PROPOSED STORM SEWER: WHERE A STORM SEWER CONNECTION IS TO BE MADE TO A PROPOSED STORM SEWER, A "Y" BRANCH SECTION OR A SECTION WITH AN OPENING MADE IN THE PIPE AT THE TIME IT IS MANUFACTURED OF THE PROPER DIAMETER SHALL BE INSTALLED IN THE SEWER AT THE JUNCTION PROVIDING THE TYPE OF PIPE USED IS MANUFACTURED WITH "Y" BRANCHES OR WITH OPENING MADE IN THE PIPE.

THE JUNCTION OF THE PROPOSED STORM SEWER CONNECTION WITH THE PROPOSED STORM SEWER SHALL BE CONSTRUCTED AS FOLLOWS:

- a. SIMILAR TO DETAIL 1 AND DETAIL 2 ABOVE EXCEPT NO BRICK WILL BE REQUIRED IF SECTIONS WITH "Y" BRANCHES OR SECTIONS WITH OPENINGS MADE IN THE PIPE ARE USED.
- b. SAME AS DETAIL 3 ABOVE.

2. CONNECTION TO EXISTING SEWER: WHERE A STORM SEWER CONNECTION IS TO BE MADE TO AN EXISTING SEWER, A CIRCULAR OPENING SHALL BE MADE IN THE EXISTING SEWER OF THE SAME SIZE AS THE EXTERNAL DIAMETER OF THE PROPOSED STORM SEWER CONNECTION.

IF THE EXISTING SEWER PIPE IS CRACKED, BROKEN OR OTHERWISE INJURED BY THE CONTRACTOR IN MAKING THIS CIRCULAR OPENING. THE CONTRACTOR SHALL REPLACE THIS SECTION OF PIPE WITH A PIPE EQUAL TO AND SIMILAR IN ALL RESPECTS TO THE TO THE PIPE IN THE EXISTING SEWER. THE CONTRACTOR SHALL DO THIS WORK IN A CAREFUL WORKMANLIKE MANNER WITHOUT EXTRA COMPENSATION.

THE JOINT BETWEEN THE EXISTING SEWER AND THE PROPOSED SEWER SHALL BE COMPLETELY SEALED WITH BRICK AS SHOWN ABOVE. BRICK GRADE SW, OR CONCRETE BUILDING BRICK GRADE A, SHALL BE LAID IN MORTAR THE SAME AS SPECIFIED FOR BRICK MASONRY UNDER ARTICLE 612.05 OF THE STANDARD SPECIFICATIONS.

REVISIONS	
NAME	DATE

ILLINOIS DEPARTMENT OF TRANSPORTATION
U.S. 41 (SKOKIE HIGHWAY)
AT IL ROUTE 132
**DETAILS OF STORM SEWER
CONNECTIONS TO SEWER AND
CONCRETE GUTTER ALONG
LIGHT POLE BASE**

SCALE: NONE

DRAWN BY: NSB

DATE: MAY 12, 2008

CHECKED BY: DA

DATE	
BY	
SURVEYED	
PLOTTED	
NOTED	
NO. OF SHEETS CHECKED	
CADD FILE NAME	
PLAN	
NOTE BOOK NO.	

DATE	
BY	
SURVEYED	
PLOTTED	
NOTED	
NO. OF SHEETS CHECKED	
CADD FILE NAME	
PROFILE	
NOTE BOOK NO.	
STRUCTURE NOTATIONS	