

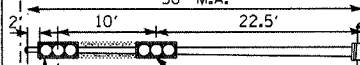
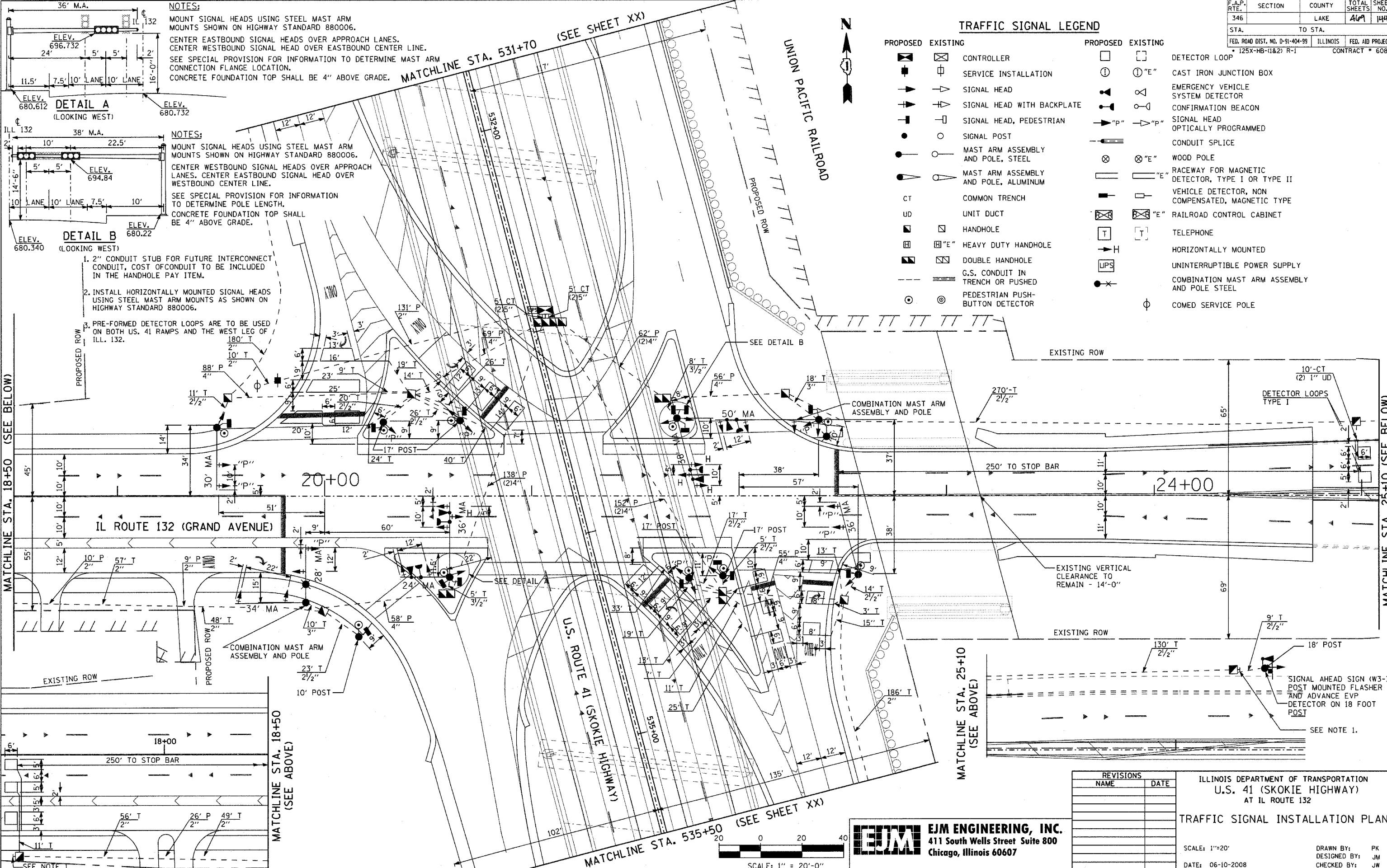
F.A.P. RTE.	SECTION	COUNTY	TOTAL SHEETS	SHEET NO.
346		LAKE	469	144
STA.	TO STA.		FED. AID PROJECT	CONTRACT
FED. ROAD DIST. NO. D-91-404-99	ILLINOIS		FED. AID PROJECT	60826
• 125X-HB-(1&2) R-1				

TRAFFIC SIGNAL LEGEND

PROPOSED	EXISTING	DESCRIPTION	PROPOSED	EXISTING	DESCRIPTION
		CONTROLLER			DETECTOR LOOP
		SERVICE INSTALLATION			CAST IRON JUNCTION BOX
		SIGNAL HEAD			EMERGENCY VEHICLE SYSTEM DETECTOR
		SIGNAL HEAD WITH BACKPLATE			CONFIRMATION BEACON
		SIGNAL HEAD, PEDESTRIAN			SIGNAL HEAD OPTICALLY PROGRAMMED
		SIGNAL POST			CONDUIT SPLICE
		MAST ARM ASSEMBLY AND POLE, STEEL			WOOD POLE
		MAST ARM ASSEMBLY AND POLE, ALUMINUM			RACEWAY FOR MAGNETIC DETECTOR, TYPE I OR TYPE II
CT		COMMON TRENCH			VEHICLE DETECTOR, NON COMPENSATED, MAGNETIC TYPE
UD		UNIT DUCT			RAILROAD CONTROL CABINET
		HANDHOLE			TELEPHONE
		HEAVY DUTY HANDHOLE			HORIZONTALLY MOUNTED
		DOUBLE HANDHOLE			UNINTERRUPTIBLE POWER SUPPLY
		G.S. CONDUIT IN TRENCH OR PUSHED			COMBINATION MAST ARM ASSEMBLY AND POLE STEEL
		PEDESTRIAN PUSH-BUTTON DETECTOR			COMED SERVICE POLE

DATE	BY	REVISIONS

DATE	BY	REVISIONS



NOTES:
 MOUNT SIGNAL HEADS USING STEEL MAST ARM MOUNTS SHOWN ON HIGHWAY STANDARD 880006.
 CENTER WESTBOUND SIGNAL HEADS OVER APPROACH LANES. CENTER EASTBOUND SIGNAL HEAD OVER EASTBOUND CENTER LINE.
 SEE SPECIAL PROVISION FOR INFORMATION TO DETERMINE MAST ARM CONNECTION FLANGE LOCATION.
 CONCRETE FOUNDATION TOP SHALL BE 4" ABOVE GRADE.

NOTES:
 MOUNT SIGNAL HEADS USING STEEL MAST ARM MOUNTS SHOWN ON HIGHWAY STANDARD 880006.
 CENTER WESTBOUND SIGNAL HEADS OVER APPROACH LANES. CENTER EASTBOUND SIGNAL HEAD OVER WESTBOUND CENTER LINE.
 SEE SPECIAL PROVISION FOR INFORMATION TO DETERMINE POLE LENGTH.
 CONCRETE FOUNDATION TOP SHALL BE 4" ABOVE GRADE.

1. 2" CONDUIT STUB FOR FUTURE INTERCONNECT CONDUIT, COST OF CONDUIT TO BE INCLUDED IN THE HANDHOLE PAY ITEM.
 2. INSTALL HORIZONTALLY MOUNTED SIGNAL HEADS USING STEEL MAST ARM MOUNTS AS SHOWN ON HIGHWAY STANDARD 880006.
 3. PRE-FORMED DETECTOR LOOPS ARE TO BE USED ON BOTH US. 41 RAMPS AND THE WEST LEG OF ILL. 132.

REVISIONS	
NAME	DATE

ILLINOIS DEPARTMENT OF TRANSPORTATION
 U.S. 41 (SKOKIE HIGHWAY)
 AT IL ROUTE 132
TRAFFIC SIGNAL INSTALLATION PLAN
 SCALE: 1"=20'
 DATE: 06-10-2008
 DRAWN BY: PK
 DESIGNED BY: JM
 CHECKED BY: JW

EJM ENGINEERING, INC.
 411 South Wells Street Suite 800
 Chicago, Illinois 60607

