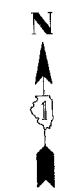
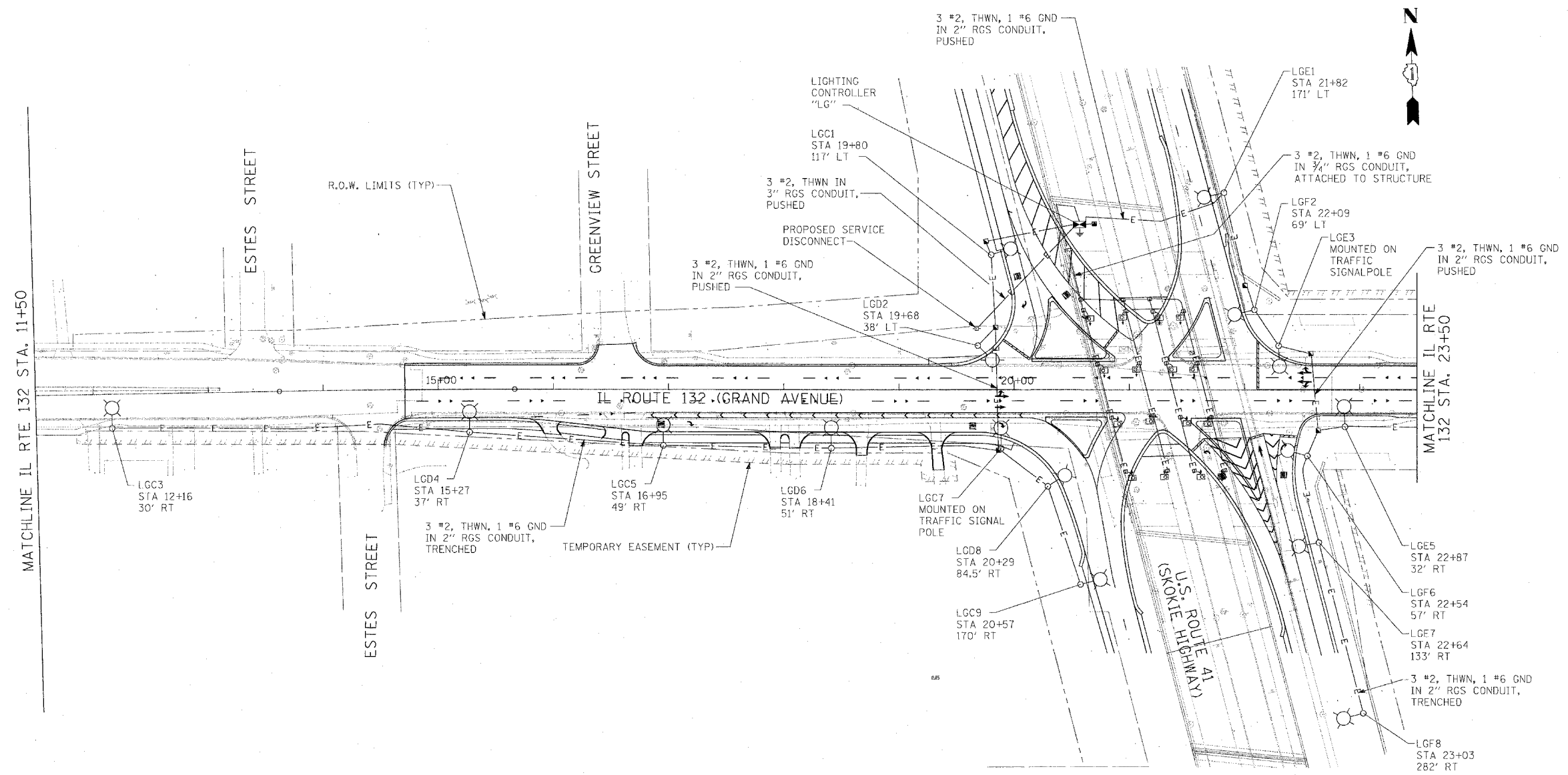


F.A.P. RTE.	SECTION	COUNTY	TOTAL SHEETS	SHEET NO.
120	*	LAKE	469	159
STA.	TO STA.			
FED. ROAD DIST. NO. D-91-404-99		ILLINOIS	FED. AID PROJECT	
* 125X-HB-(1&2) R-1				

PLAN	DATE
REVISED	
NO. OF SHEETS	
NO. OF SHEETS CHECKED	
NO. OF SHEETS NOT CHECKED	
DATE FILE NAME	

PROFILE	DATE
REVISED	
NO. OF SHEETS	
NO. OF SHEETS CHECKED	
NO. OF SHEETS NOT CHECKED	
DATE FILE NAME	

PLOT DATE = 5/14/2008
 FILE NAME = I:\TY\LIN\34295 - US 41 - IL 132\CADD\411PEPML TO 4162.DWG



REVISIONS	
NAME	DATE

ILLINOIS DEPARTMENT OF TRANSPORTATION
 U.S. 41 (SKOKIE HIGHWAY)
 AT IL ROUTE 132
 PROPOSED ROADWAY LIGHTING PLAN
 SHEET 5 OF 6
 IL 132 - STA. 11+50 TO STA. 19+00
 SCALE: 1"=50'-0" DRAWN BY: FO
 DATE: 05/07/08 CHECKED BY: DEM