

STATE OF ILLINOIS
DEPARTMENT OF TRANSPORTATION

ROUTE NO.	SECTION	COUNTY	SHEET NO.	SHEET NO.
346	*	LAKE	469	171
FED. ROAD DIST. NO.		ILLINOIS	FED. AID PROJECT	
* 125X-HB-(1&2) R-1		CONTRACT # 60826		

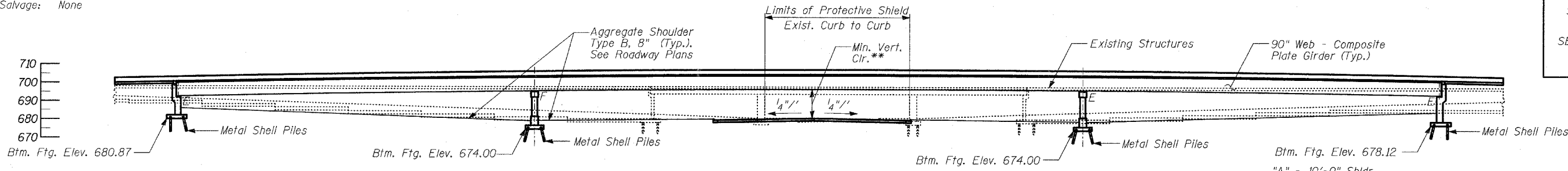
Benchmark: BM #6 - Square cut in base of L.P. at N.E. corner of IL Route 132 and Magnolia (Speedway) 45.14' LT, Sta. 32+13.24 (IL 132 E.B. @), Elev. 696.47.

Existing Structure: Each existing superstructure consists of a 208'-5 1/4" (Bk. to Bk. abutments) by 41'-6" wide reinforced concrete deck supported on six continuous wide flange beams. The superstructure rests on two piers and two closed abutments, all of reinforced concrete, and founded on timber piles. Existing structure numbers are 049-0030 & 049-0031. See staging plan for staging details.

Salvage: None

STATION 533+64.76
BUILT 200_ BY
STATE OF ILLINOIS
F.A.P. RT. 346
SEC. 125X-HB-(1&2)R-1
LOADING HS20-44
STR. NO. 049-0209

NAME PLATE
See Std. 515001

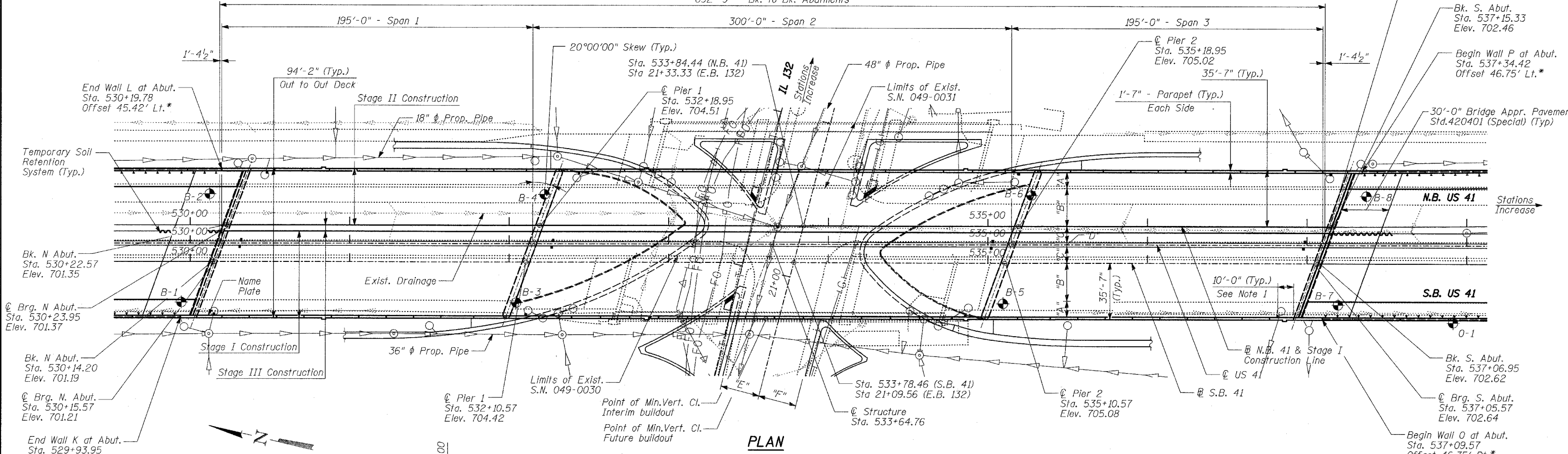


NOTES:
1. Scuppers are placed 10'-0" from the face of piers and abutments.

ELEVATION
(Elevation View Shown at @ US 41)
692'-9" - Bk. to Bk. Abutments

**15'-3" Future buildout
15'-8" Interim buildout

"A" - 10'-0" Shldr.
"B" - 2 Lanes @ 12'-0" = 24'-0"
"C" - 10'-2" Shldr.
"D" - 2'-8" Median Barrier
"E" - 2 W.B. Lanes @ 12'-0" = 24'-0"
"F" - 2 E.B. Lanes @ 12'-0" = 24'-0"



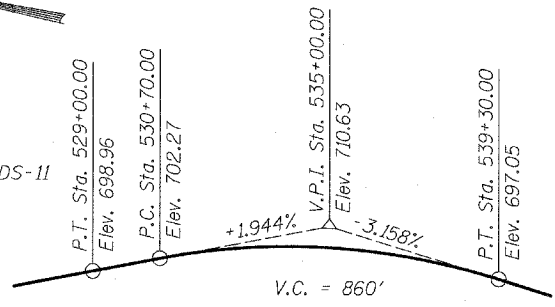
PLAN

LEGEND

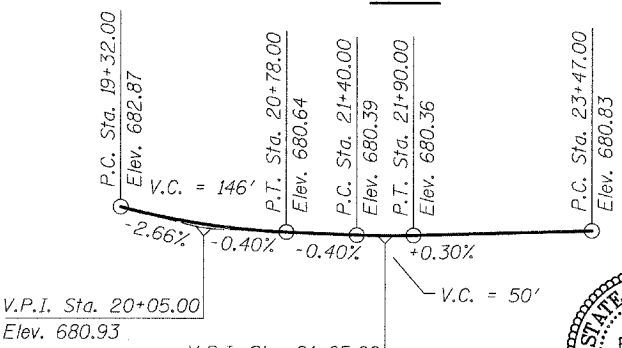
- ⊙ - Manhole
- ⊙ - Catch Basin
- ⊙ - Soil Boring
- Prop. Drain Pipe
- - Drainage Scupper - Type DS-11

TYLIN INTERNATIONAL

DESIGNED	- SP
CHECKED	- AD
DRAWN	- CM
CHECKED	- AD



PROFILE US 41 N.B. & S.B.



PROFILE IL 132 E.B.

APPROVED
FOR STRUCTURAL ADEQUACY ONLY

Ralph E. Anderson (TS)
ENGINEER OF BRIDGES AND STRUCTURES



Signed *SP*
Spiros Pantazis, S.E. II, Lic. No. 081-006448
Expires 11-30-2008.
Date 5/14/08

For drawings S-1 thru S-66

BRIDGE
GENERAL PLAN & ELEVATION,
STA 533+64.76

FAP 346 (U.S. ROUTE 41 - SKOKIE
HIGHWAY) OVER ILLINOIS ROUTE 132
SECTION 125X-HB-(1&2)R-1
LAKE COUNTY
S.N. 049-0209

*Measured from @ US 41