

GENERAL NOTES

STATE OF ILLINOIS
DEPARTMENT OF TRANSPORTATION

ROUTE NO.	SECTION	COUNTY	TOTAL SHEETS	SHEET NO.	SHEET NO. - S-3
346	*	LAKE	469	132	S-66 SHEETS
FED. ROAD DIST. NO.		ILLINOIS	FED. AID PROJECT-	CONTRACT # 60826	
* 125X-HB-(1&2) R-1					

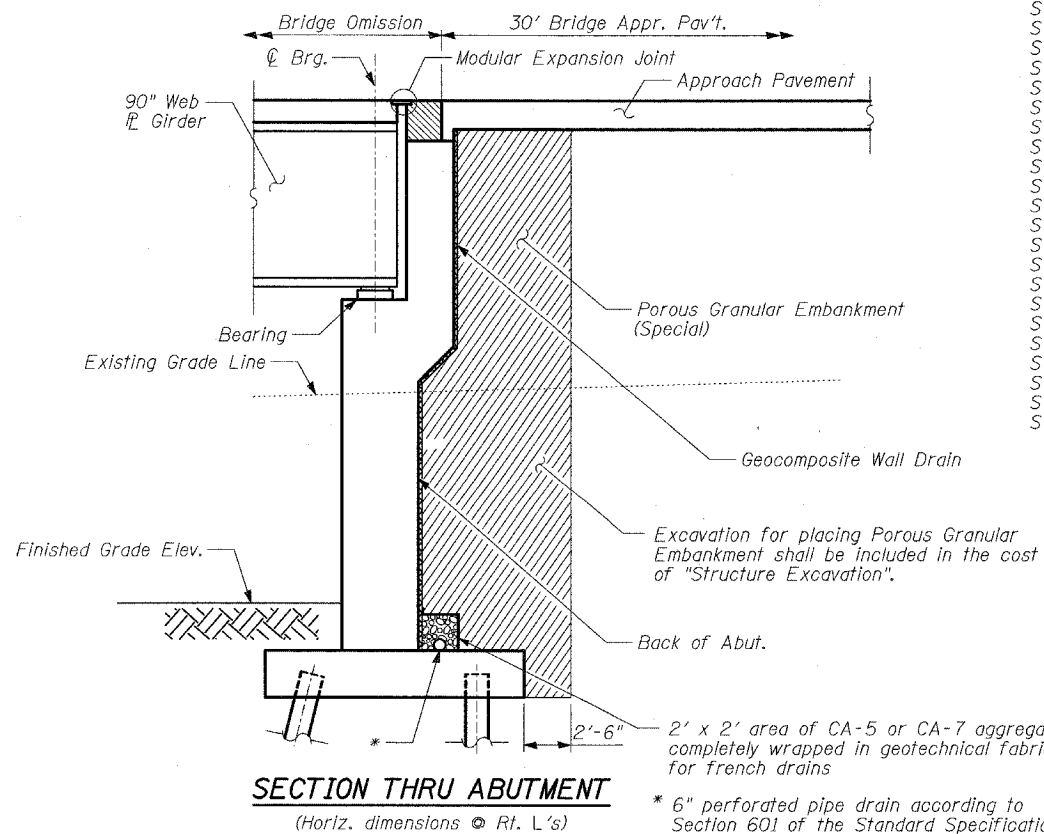
- Fasteners shall be AASHTO M164 Type 1, mechanically galvanized bolts. Bolts $\frac{1}{8}$ in. ϕ , holes $\frac{15}{16}$ in. ϕ , unless otherwise noted.
- Calculated weight of Structural Steel =
Grade 50 = 3,572,300 lbs.
Grade 36 = 180,150 lbs. * For Information Only
- No field welding is permitted except as specified in the contract documents.
- Reinforcement bars shall conform to the requirements of ASTM A 706 Gr 60 (IL Modified). See Special Provisions.
- Reinforcement bars designated (E) shall be epoxy coated.
- If the Contractor elects to use cantilever forming brackets on the exterior beams or girders, the brackets shall be placed at the same locations as required for the hardwood blocks in Article 503.06(b) of the Standard Specifications. If additional cantilever forming brackets are required, hardwood blocking shall be wedged between the exterior and first interior beam at each of these additional bracket locations.
- Bearing seat surfaces shall be constructed or adjusted to their designated elevations within a tolerance of $\frac{1}{8}$ inch (0.01 ft.). Adjustment shall be made either by grinding the surface or by shimming the bearings.
- Concrete Sealer shall be applied to all exposed surfaces of the abutments.
- The existing structural steel coating contains lead. The Contractor shall take appropriate precautions to deal with the presence of lead on this project.
- The Inorganic Zinc Rich Primer / Acrylic / Acrylic Paint System shall be used for shop and field painting of new structural steel except where otherwise noted. The color of the final finish coat for all interior steel surface shall be gray, Munsell No. 5B 7/1. The color of the final finish coat for the exterior and bottom flange of the fascia beams shall be Reddish Brown Munsell No. 2.5 YR 3/4. The final finish coat shall be field painted. See Special Provisions for "Cleaning and Painting New Metal Structures."
- The Contractor shall drive test piles to 110% of the nominal required bearing specified in production locations at substructures specified or approved by the Engineer before ordering the remainder of piles.
- The Contractor is alerted that camber and dead load deflection values shown on the drawings were developed based on the deck pouring sequence shown in the Contract Drawings. Any deviation from this pouring sequence may require changes to camber and elevations that reflect dead load deflections. If the Contractor wishes to vary from the sequence shown on the plans, then proposed plan revisions and design calculations shall be submitted to the Engineer for review and approval. The calculations shall be prepared and sealed by an Illinois Licensed Structural Engineer.
- Slip forming of the parapets is not allowed.
- The pay item, "Removal of Existing Structure No. 1" and "Removal of Existing Structure No. 2" shall also include the removal of the approach retaining walls and stairwell in accordance with the Special Provisions.

INDEX OF SHEETS

- S-1 OVERALL GENERAL PLAN
- S-2 BRIDGE GENERAL PLAN & ELEVATION, STA 533+64.76
- S-3 GENERAL NOTES, INDEX OF SHEETS AND BILL OF MATERIAL
- S-4 STAGE CONSTRUCTION I
- S-5 STAGE CONSTRUCTION & TEMPORARY SOIL RETENTION SYSTEM
- S-6 TEMPORARY CONCRETE BARRIER FOR STAGE CONSTRUCTION
- S-7 TOP OF SLAB ELEVATIONS LAYOUT
- S-8 TOP OF SLAB ELEVATIONS (1 OF 7)
- S-9 TOP OF SLAB ELEVATIONS (2 OF 7)
- S-10 TOP OF SLAB ELEVATIONS (3 OF 7)
- S-11 TOP OF SLAB ELEVATIONS (4 OF 7)
- S-12 TOP OF SLAB ELEVATIONS (5 OF 7)
- S-13 TOP OF SLAB ELEVATIONS (6 OF 7)
- S-14 TOP OF SLAB ELEVATIONS (7 OF 7)
- S-15 TOP OF NORTH APPROACH SLAB ELEVATIONS
- S-16 TOP OF SOUTH APPROACH SLAB ELEVATIONS
- S-17 SUPERSTRUCTURE SPAN 1
- S-18 SUPERSTRUCTURE SPAN 2
- S-19 SUPERSTRUCTURE SPAN 3
- S-20 SUPERSTRUCTURE DETAILS I
- S-21 SUPERSTRUCTURE DETAILS II
- S-22 SUPERSTRUCTURE DETAILS III
- S-22A SUPERSTRUCTURE DETAILS IV
- S-23 SUPERSTRUCTURE DETAILS V
- S-24 DRAINAGE SCUPPER, DS-II
- S-25 MODULAR EXPANSION JOINT DETAILS
- S-26 PREFORMED JOINT STRIP SEAL
- S-27 DRAINAGE SYSTEM DETAILS
- S-28 BAR SPLICER (ASSEMBLY) DETAILS
- S-29 FRAMING PLAN
- S-30 GIRDER ELEVATION
- S-31 FRAMING DETAILS I
- S-32 FRAMING DETAILS II
- S-33 FRAMING DETAILS III
- S-34 FIXED BEARING
- S-35 FLOATING BEARINGS
- S-36 METAL SHELL PILES
- S-37 NORTH ABUTMENT
- S-38 NORTH ABUTMENT DETAILS I
- S-39 NORTH ABUTMENT DETAILS II
- S-39A NORTH ABUTMENT DETAILS III
- S-40 SOUTH ABUTMENT
- S-41 SOUTH ABUTMENT DETAILS I
- S-42 SOUTH ABUTMENT DETAILS II
- S-42A SOUTH ABUTMENT DETAILS III
- S-43 PIER 1
- S-44 PIER 1 DETAILS
- S-45 PIER 2
- S-46 PIER 2 DETAILS
- S-47 NORTH BRIDGE APPROACH PAVEMENT (1 OF 2)
- S-48 NORTH BRIDGE APPROACH PAVEMENT (2 OF 2)
- S-49 SOUTH BRIDGE APPROACH PAVEMENT (1 OF 2)
- S-50 SOUTH BRIDGE APPROACH PAVEMENT (2 OF 2)
- S-51 BORING LOG B-1 (1 OF 2)
- S-52 BORING LOG B-1 (2 OF 2)
- S-53 BORING LOG B-2 (1 OF 2)
- S-54 BORING LOG B-2 (2 OF 2)
- S-55 BORING LOG B-3 (1 OF 2)
- S-56 BORING LOG B-3 (2 OF 2)
- S-57 BORING LOG B-4 (1 OF 2)
- S-58 BORING LOG B-4 (2 OF 2)
- S-59 BORING LOG B-5 (1 OF 2)
- S-60 BORING LOG B-5 (2 OF 2)
- S-61 BORING LOG B-6 (1 OF 2)
- S-62 BORING LOG B-6 (2 OF 2)
- S-63 BORING LOG B-7 (1 OF 2)
- S-64 BORING LOG B-7 (2 OF 2)
- S-65 BORING LOG B-8 (1 OF 2)
- S-66 BORING LOG B-8 (2 OF 2)

TOTAL BILL OF MATERIAL

Item	Unit	Super.	Sub.	Total
POROUS GRANULAR EMBANKMENT (SPECIAL)	CU. YD.	-	934	934
BRIDGE APPROACH PAVEMENT (SPECIAL)	SQ. YD.	474	-	474
REMOVAL OF EXISTING STRUCTURE NO. 1	EACH	-	-	1
REMOVAL OF EXISTING STRUCTURE NO. 2	EACH	-	-	1
PROTECTIVE SHIELD	SQ. YD.	466	-	466
STRUCTURE EXCAVATION	CU. YD.	-	12,595	12,595
CONCRETE STRUCTURES	CU. YD.	-	1,458	1,458
CONCRETE SUPERSTRUCTURE	CU. YD.	2,025	-	2,025
BRIDGE DECK GROOVING	SQ. YD.	6,488	-	6,488
PROTECTIVE COAT	SQ. YD.	8,441	19	8,460
ERECTING STRUCTURAL STEEL	L. SUM	1	-	1
STUD SHEAR CONNECTORS	EACH	10,230	-	10,230
REINFORCEMENT BARS, EPOXY COATED	POUND	525,770	194,210	719,980
BAR SPLICERS	EACH	5,690	498	6,188
FURNISHING METAL PILE SHELLS 14"x $\frac{3}{8}$ "	FOOT	-	14,959	14,959
DRIVING PILES	FOOT	-	14,959	14,959
TEST PILE METAL SHELLS	EACH	-	4	4
NAMES PLATES	EACH	1	-	1
PREFORMED JOINT STRIP SEAL	FOOT	99	-	99
CONCRETE SEALER	SQ. FT.	-	523	523
PIPE UNDERDRAIN FOR STRUCTURES 6"	FOOT	-	261	261
MECHANICAL SPLICE	EACH	22	-	22
DRAINAGE SCUPPERS, DS-II	EACH	16	-	16
TEMPORARY SOIL RETENTION SYSTEM	SQ. FT.	-	1,271	1,271
ERECTING HLMR BEARINGS, GUIDED EXPANSION, 250 KIPS	EACH	20	-	20
ERECTING HLMR BEARINGS, GUIDED EXPANSION, 850 KIPS	EACH	10	-	10
DRAINAGE SYSTEM	L.SUM	1	-	1
ERECTING MODULAR EXPANSION JOINT 6"	FOOT	99	-	99
PILE EXTRACTION	EACH	-	11	11
GEOCOMPOSITE WALL DRAIN	SQ. YD.	-	414	414
ANCHOR BOLTS, 1 $\frac{1}{2}$ "	EACH	-	120	120



TYLIN INTERNATIONAL

DESIGNED	- SP
CHECKED	- AD
DRAWN	- MAF
CHECKED	- AD

REVISIONS	
NAME	DATE
SP	6/17/08

GENERAL NOTES, INDEX OF SHEETS & BILL OF MATERIAL

FAP 346 (U.S. ROUTE 41 - SKOKIE HIGHWAY) OVER ILLINOIS ROUTE 132
SECTION 125X-HB-(1&2)R-1
LAKE COUNTY
S.N. 049-0209