

STATE OF ILLINOIS
DEPARTMENT OF TRANSPORTATION

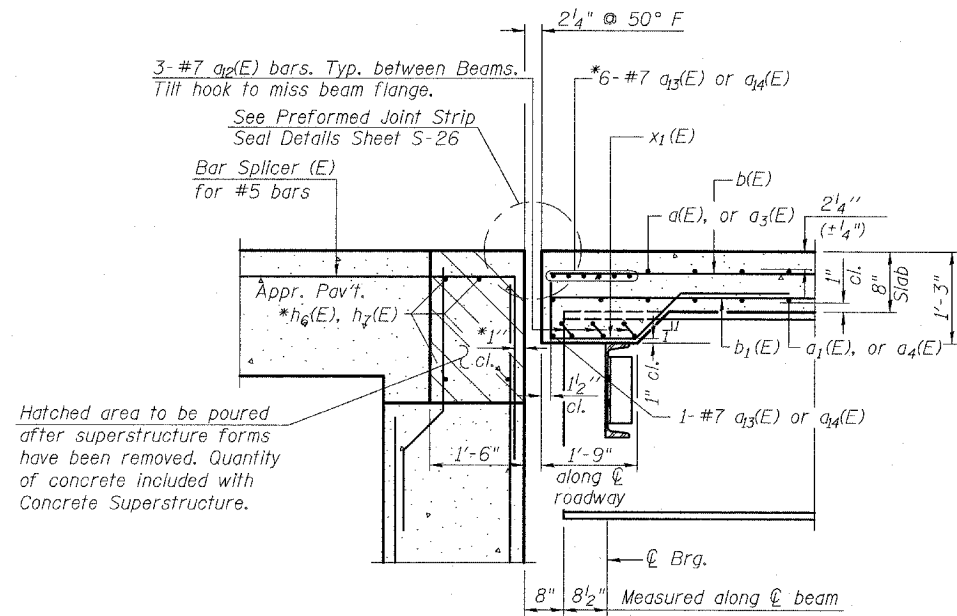
| | | | | |
|---------------------|---------|------------------|------------------|------------------|
| ROUTE NO. | SECTION | COUNTY | TOTAL SHEETS | SHEET NO. |
| 346 | * | LAKE | 469 | 192 |
| FED. ROAD DIST. NO. | | ILLINOIS | FED. AID PROJECT | CONTRACT # 60826 |
| 125X-HB-(1&2) R-1 | | SHEET NO. - S-23 | | |
| | | S-66 SHEETS | | |

BILL OF MATERIAL (CONTINUED)

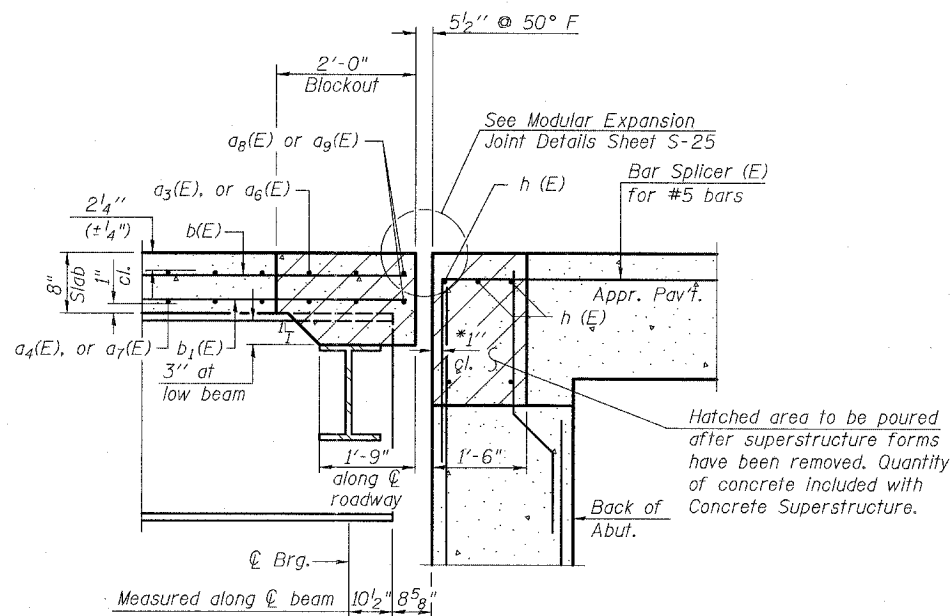
| Reinforcement Bars, Epoxy Coated | POUND | 525,770 |
|----------------------------------|-------|---------|
| Concrete Superstructure | CU YD | 2,025 |
| Bridge Deck Grooving | SQ YD | 6,488 |
| Protective Coat | SQ YD | 7,935 |
| Bar Splicers | EACH | 5,690 |
| Mechanical Splice | EACH | 22 |

BILL OF MATERIAL

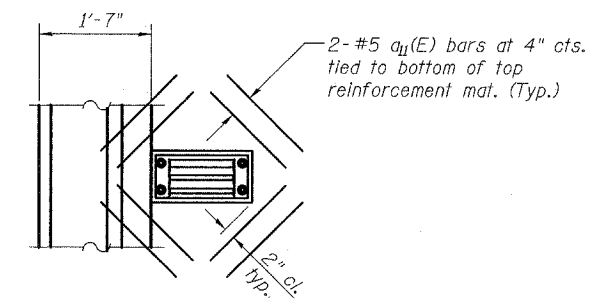
| Bar | No. | Size | Length | Shape |
|---------------------|------|------|---------|-------|
| d(E) | 3224 | #5 | 28'-2" | — |
| a ₁ (E) | 3456 | #5 | 19'-5" | — |
| a ₂ (E) | 1660 | #6 | 6'-0" | — |
| a ₃ (E) | 1660 | #5 | 35'-3" | — |
| a ₄ (E) | 1185 | #5 | 34'-11" | — |
| a ₅ (E) | 2845 | #5 | 3'-8" | — |
| a ₆ (E) | 48 | #5 | 54'-3" | — |
| a ₇ (E) | 33 | #5 | 53'-11" | — |
| a ₈ (E) | 4 | #5 | 29'-11" | — |
| a ₉ (E) | 2 | #5 | 37'-6" | — |
| a ₁₀ (E) | 2 | #5 | 3'-11" | — |
| a ₁₁ (E) | 128 | #5 | 1'-6" | — |
| a ₁₂ (E) | 32 | #7 | 11'-8" | — |
| a ₁₃ (E) | 14 | #7 | 30'-7" | — |
| a ₁₄ (E) | 7 | #7 | 37'-7" | — |
| a ₁₅ (E) | 22 | #7 | 3'-10" | — |
| a ₁₆ (E) | 4 | #7 | 3'-6" | — |
| a ₁₇ (E) | 4 | #7 | 3'-9" | — |
| b(E) | 2352 | #5 | 30'-11" | — |
| b ₁ (E) | 2208 | #5 | 32'-2" | — |
| b ₂ (E) | 570 | #6 | 49'-4" | — |
| d(E) | 1514 | #5 | 5'-7" | — |
| d ₁ (E) | 1514 | #5 | 7'-6" | — |
| d ₂ (E) | 1514 | #5 | 1'-9" | — |
| d ₃ (E) | 1514 | #5 | 3'-0" | — |
| d ₄ (E) | 24 | #6 | 4'-5" | — |
| d ₅ (E) | 40 | #6 | 8'-11" | — |
| e(E) | 441 | #4 | 19'-9" | — |
| e ₁ (E) | 26 | #4 | 15'-10" | — |
| e ₂ (E) | 12 | #8 | 19'-9" | — |
| e ₃ (E) | 42 | #4 | 26'-7" | — |
| e ₄ (E) | 42 | #8 | 29'-0" | — |
| e ₅ (E) | 30 | #4 | 27'-6" | — |
| e ₆ (E) | 30 | #8 | 30'-0" | — |
| x ₁ (E) | 95 | #5 | 5'-11" | — |



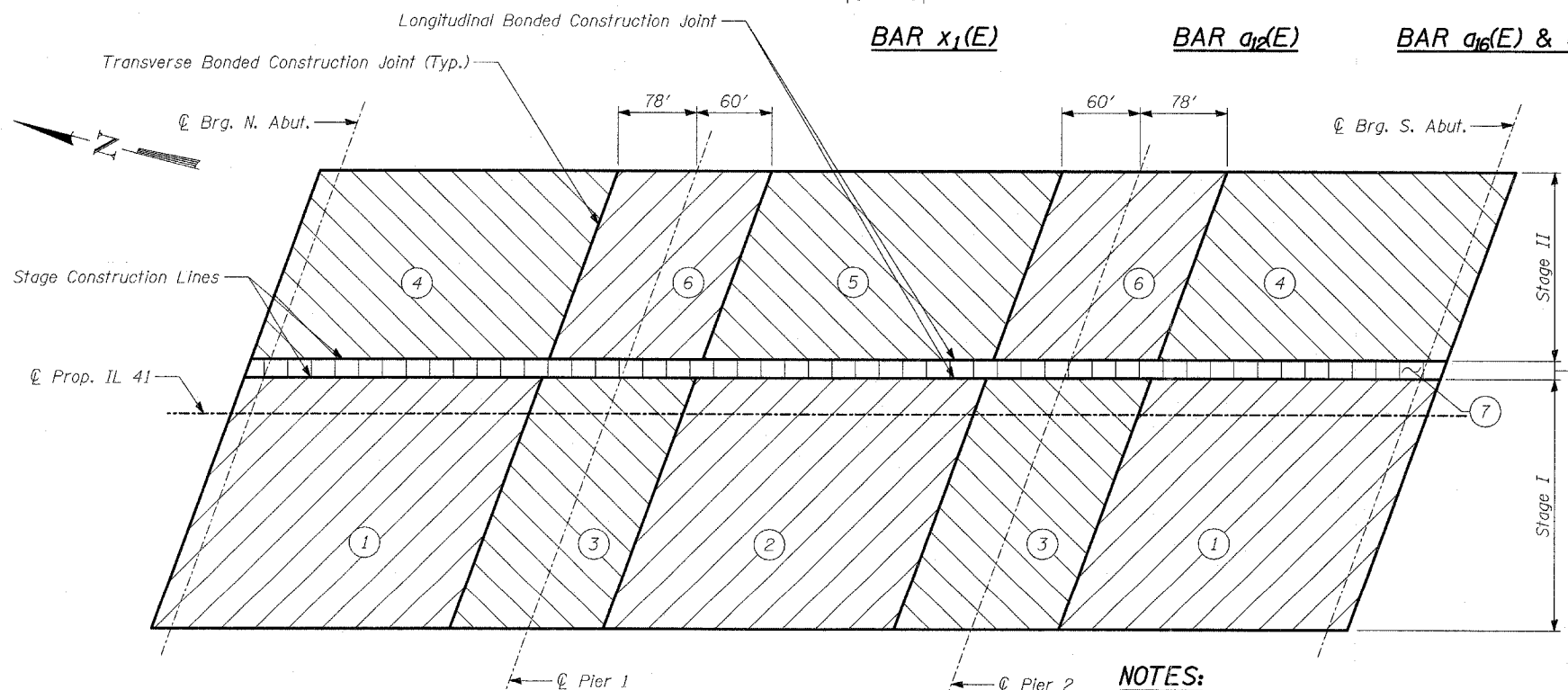
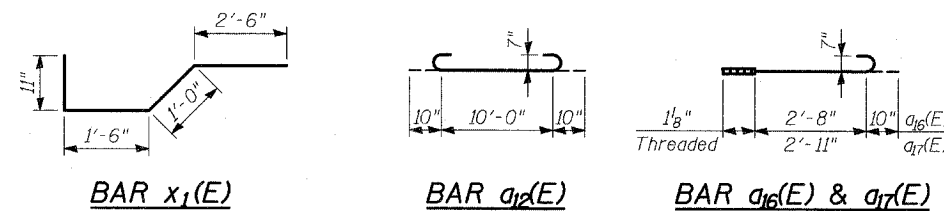
SECTION A-A



SECTION B-B



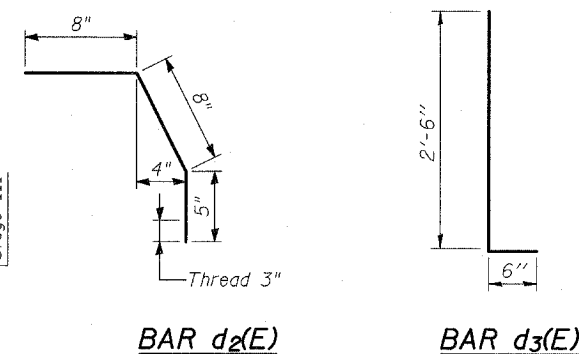
ADDITIONAL REINFORCEMENT AT SCUPPERS



DECK POUR SEQUENCE PLAN

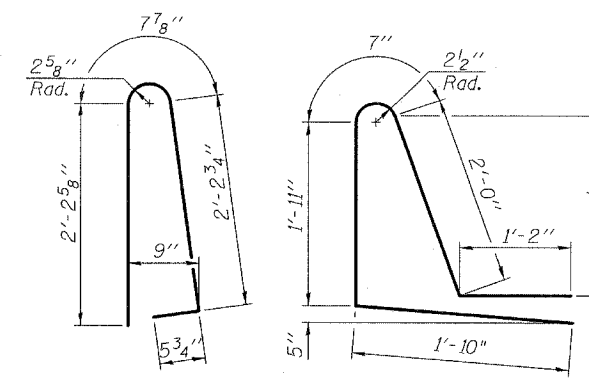
NOTES:

- When the deck pour is stopped for the day at one or more of the transverse bonded construction joints in the deck pouring sequence as shown, the next pour shall not be made until both of the following are met:
- At least 72 hours shall have elapsed from the end of previous pour.
- The concrete strength shall have attained a minimum flexural strength of 650 psi or a minimum compressive strength of 3500 psi.



BAR d2(E)

BAR d3(E)



BAR d(E)

BAR d1(E)

TYLIN INTERNATIONAL

| | |
|----------|-------|
| DESIGNED | - SP |
| CHECKED | - AD |
| DRAWN | - MAF |
| CHECKED | - AD |

SUPERSTRUCTURE
DETAILS V

FAP 346 (U.S. ROUTE 41 - SKOKIE
HIGHWAY) OVER ILLINOIS ROUTE 132
SECTION 125X-HB-(1&2)R-1
LAKE COUNTY
S.N. 049-0209