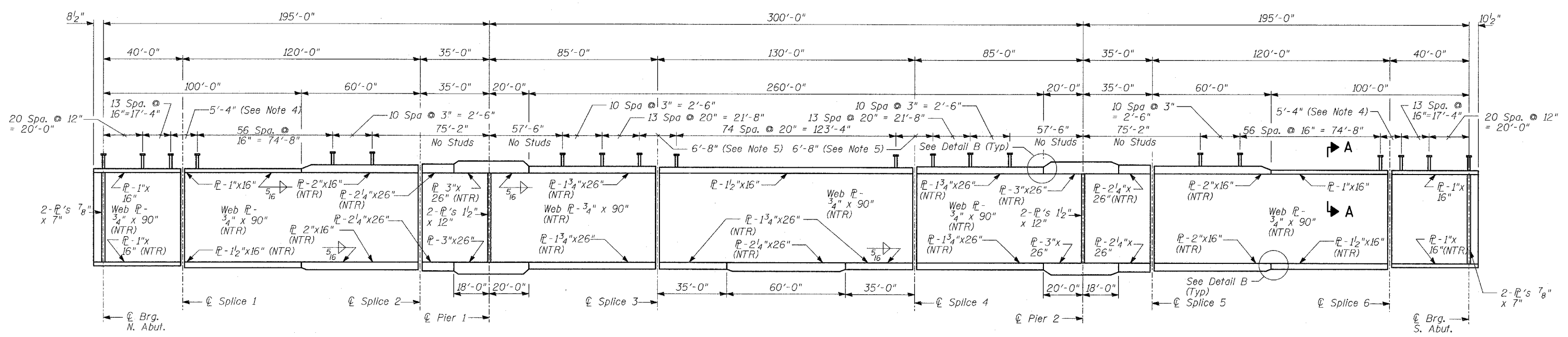


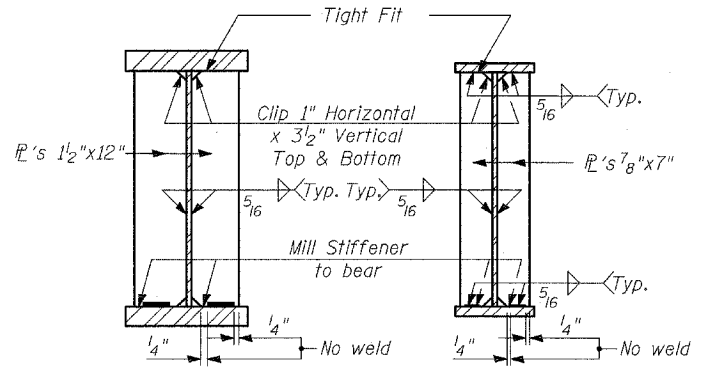
STATE OF ILLINOIS  
DEPARTMENT OF TRANSPORTATION

ROUTE NO.	SECTION	COUNTY	TOTAL SHEETS	SHEET NO.	SHEET NO. - S-30 S-66 SHEETS
346	*	LAKE	469	199	
FED. ROAD DIST. NO.	ILLINOIS	FED. AID PROJECT-			
			CONTRACT # 60826		



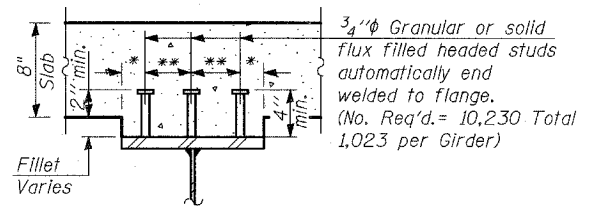
GIRDER ELEVATION

TOP OF WEB ELEVATIONS  
(For Fabrication Only)



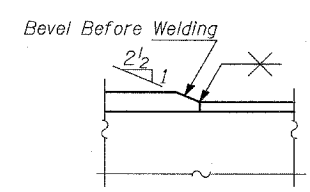
SECTION AT PIER  
SECTION AT ABUTMENT

BEARING STIFFENERS



SECTION A-A

\* 2" for 16 in. flange  
4" for 26 in. flange  
\*\* 6" for 16 in. flange  
9" for 26 in. flange

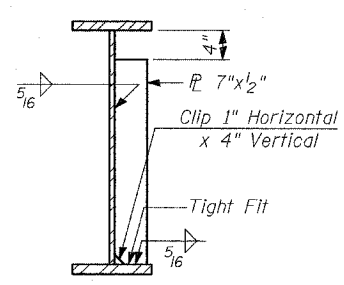


DETAIL "B"

Location	Girder	1	2	3	4	5	6	7	8	9	10
CL Brg. N. Abutment		700.53	700.66	700.74	700.54	700.29	700.22	700.34	700.40	700.18	699.92
CL Field Splice #1		701.50	701.63	701.71	701.51	701.26	701.19	701.31	701.37	701.15	700.89
CL Field Splice #2		703.00	703.15	703.26	703.08	702.85	702.81	702.95	703.03	702.83	702.59
CL Pier 1		703.42	703.58	703.69	703.53	703.30	703.26	703.41	703.50	703.31	703.07
CL Field Splice #3		704.73	704.90	705.04	704.89	704.68	704.66	704.83	704.93	704.76	704.54
CL Field Splice #4		704.86	705.06	705.22	705.10	704.92	704.93	705.12	705.26	705.11	704.92
CL Pier 2		703.72	703.94	704.12	704.02	703.86	703.88	704.09	704.24	704.12	703.94
CL Field Splice #5		703.37	703.60	703.79	703.69	703.54	703.57	703.79	703.95	703.82	703.66
CL Field Splice #6		702.12	702.37	702.58	702.51	702.38	702.44	702.68	702.87	702.77	702.63
CL Brg. S. Abutment		701.21	701.48	701.69	701.63	701.51	701.58	701.83	702.02	701.93	701.80

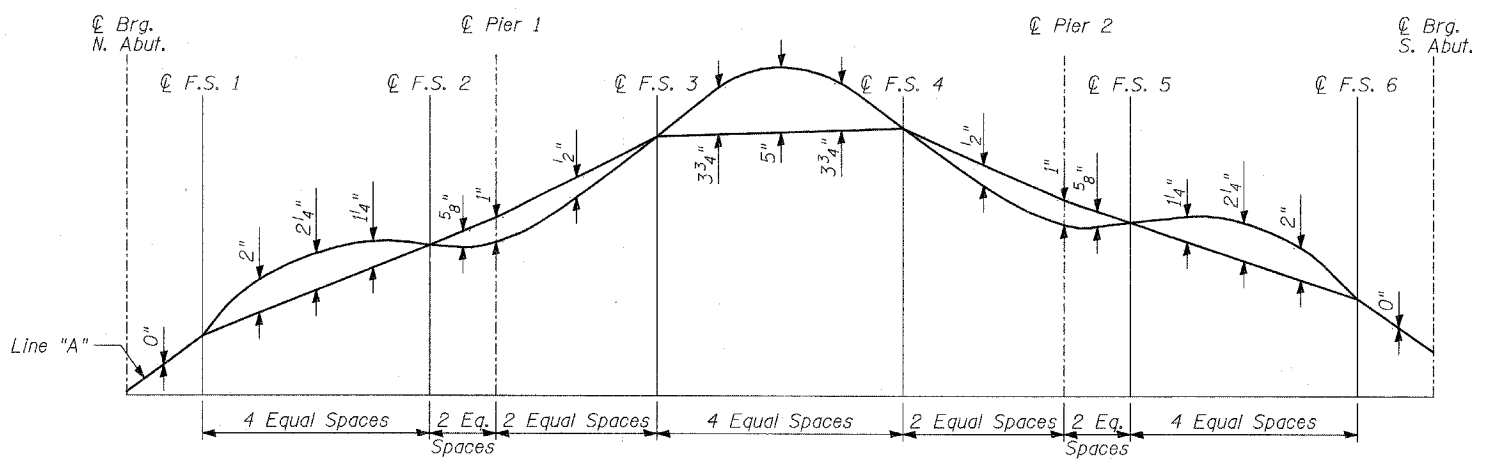
NOTES:

- Line "A" is a straight line between C Brg. N. Abut. to C FS#1; C FS#1 to C FS#2; C FS#2 to C FS#3; C FS#3 to C FS#4; C FS#4 to C FS#5; C FS#5 to C FS#6; and C FS#6 to C Brg. S. Abut.
- Camber shown includes Dead Load Deflection due to deck concrete and steel weight only.
- Load carrying components designated "NTR" shall conform to the Supplemental Requirements for Notch Toughness, Zone 2.
- See Sheet S-33 for stud layout at FS #1 and #6.
- See Sheet S-33 for stud layout at FS #3 and #4



INTERMEDIATE STIFFENER DETAIL

Note:  
See Framing Plan for stiffener placement.



TYPICAL CAMBER DIAGRAM

TYLIN INTERNATIONAL

DESIGNED	- SP
CHECKED	- AD
DRAWN	- MAF
CHECKED	- AD

**GIRDER ELEVATION**

FAP 346 (U.S. ROUTE 41 - SKOKIE  
HIGHWAY) OVER ILLINOIS ROUTE 132  
SECTION 125X-HB-(1&2)R-1  
LAKE COUNTY  
S.N. 049-0209