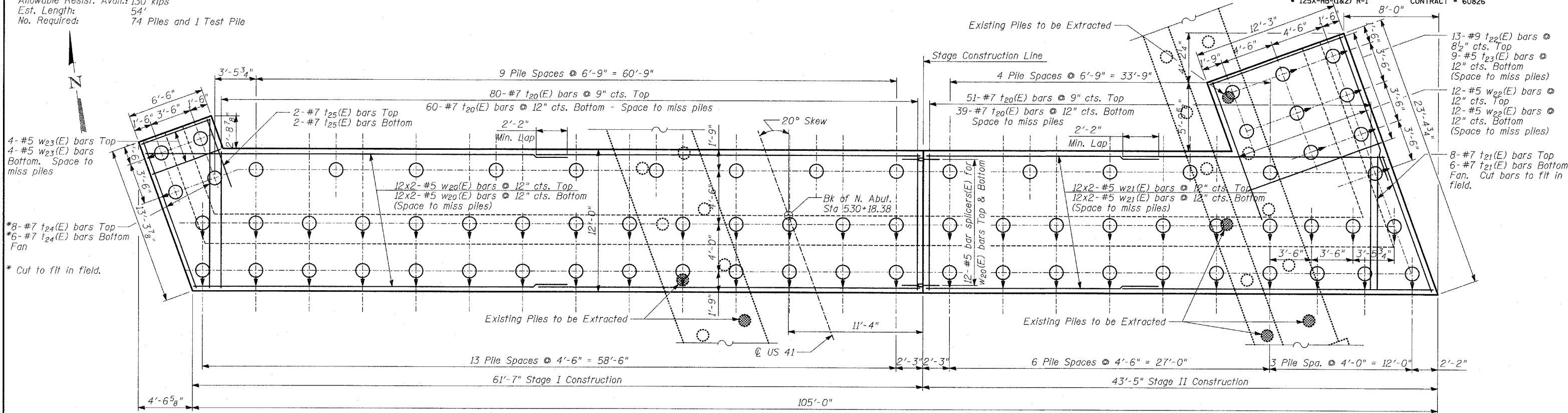


**PILE DATA:**

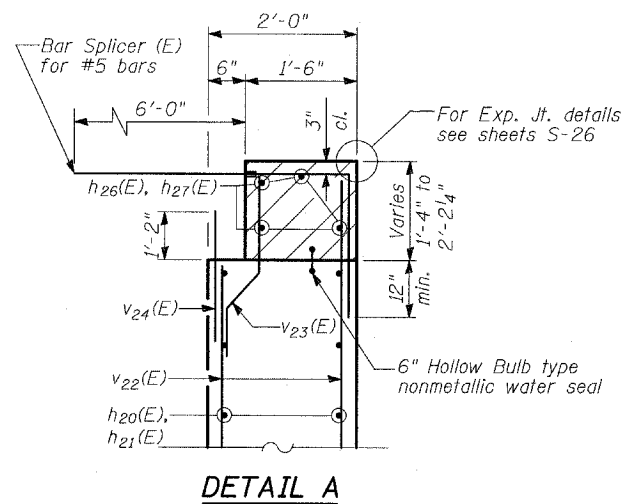
Type: 14"  $\phi$  Metal Shell Piles w/  $\frac{3}{8}$ " Thick Walls  
 Nominal Req'd Bearing: 390 kips  
 Allowable Resist. Avail.: 130 kips  
 Est. Length: 54'  
 No. Required: 74 Piles and 1 Test Pile

STATE OF ILLINOIS  
 DEPARTMENT OF TRANSPORTATION

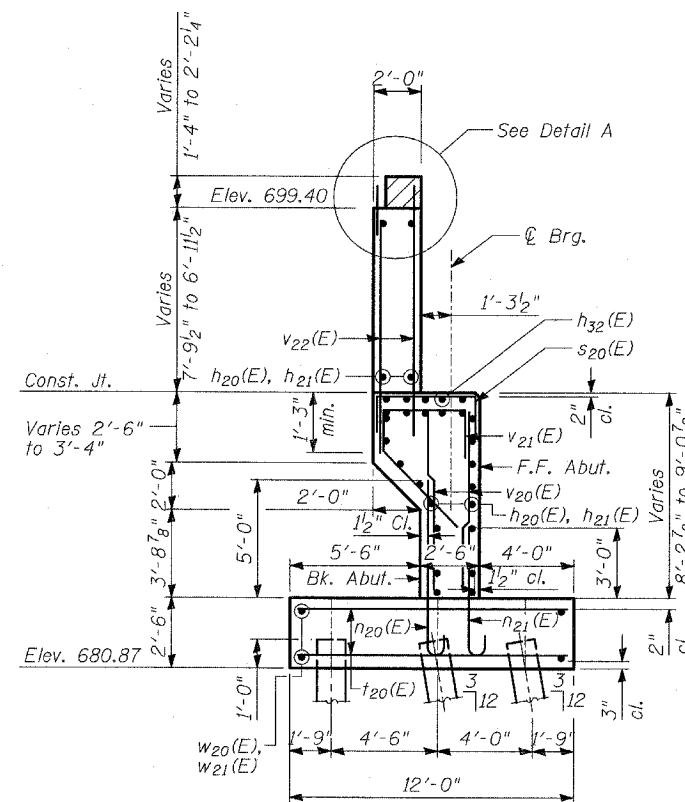
ROUTE NO.	SECTION	COUNTY	TOTAL SHEETS	SHEET	SHEET NO. - S-39 S-66-SHEETS
346	.	LAKE	469	208	
FED. ROAD DIST. NO.		ILLINOIS	FED. AID PROJECT		CONTRACT # 60826
• 125X-HB-(1&2) R-1					



**FOOTING PLAN - NORTH ABUTMENT**



**DETAIL A**



**SECTION A-A**

**NOTES**

1. For details of Bar Splicers, see sheet S-28 of S-66.
2. Hatched area to be poured after superstructure false work has been removed. Quantity of concrete included with Concrete Superstructure.
3. Space reinforcement in cap to miss anchor bolts.
4. Pour steps monolithically with cap.

**NORTH ABUTMENT  
 DETAILS II**

FAP 346 (U.S. ROUTE 41 - SKOKIE  
 HIGHWAY) OVER ILLINOIS ROUTE 132  
 SECTION 125X-HB-(1&2)R-1  
 LAKE COUNTY  
 S.N. 049-0209

**TYLIN INTERNATIONAL**

DESIGNED	- SP
CHECKED	- AD
DRAWN	- SP, MAF
CHECKED	- AD