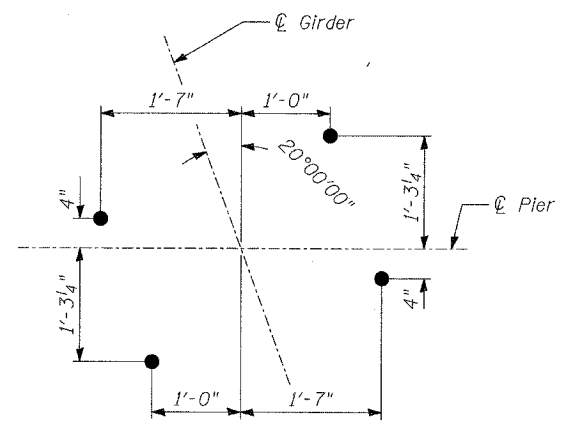
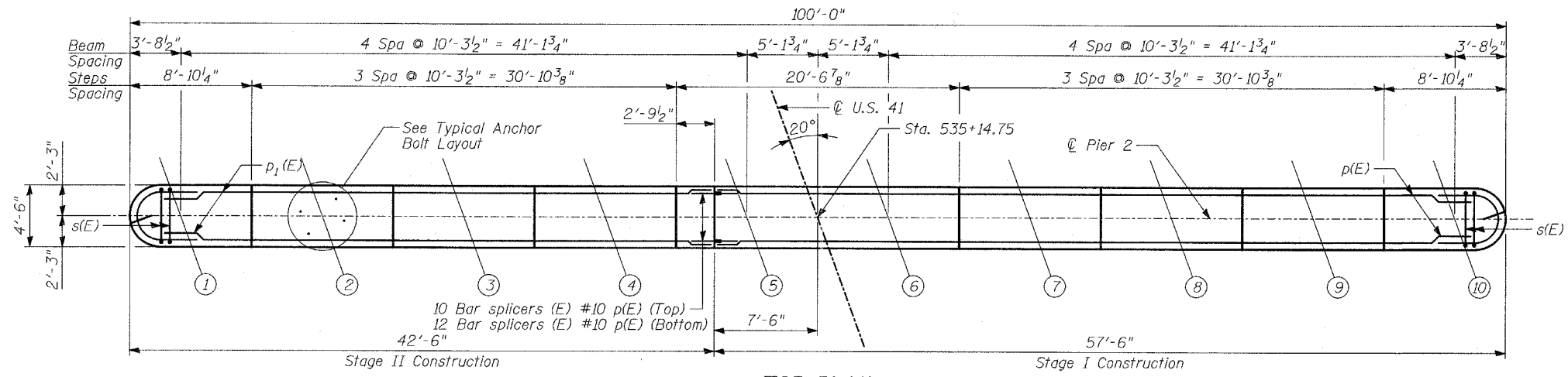


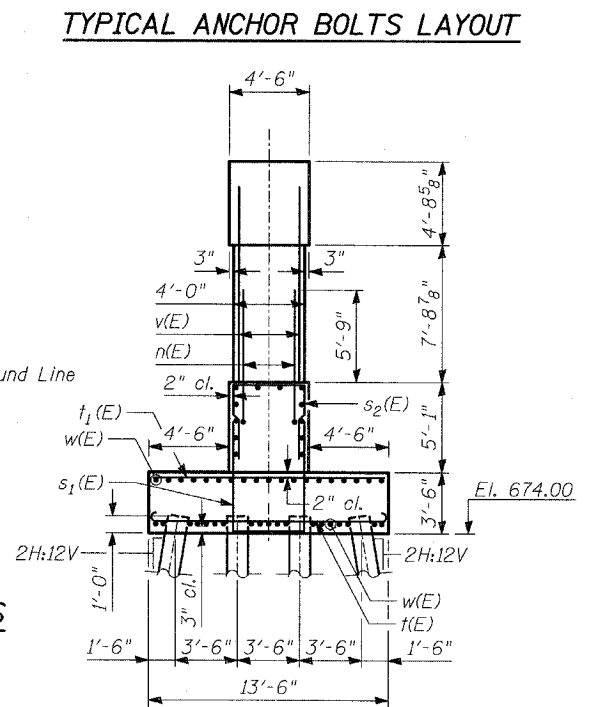
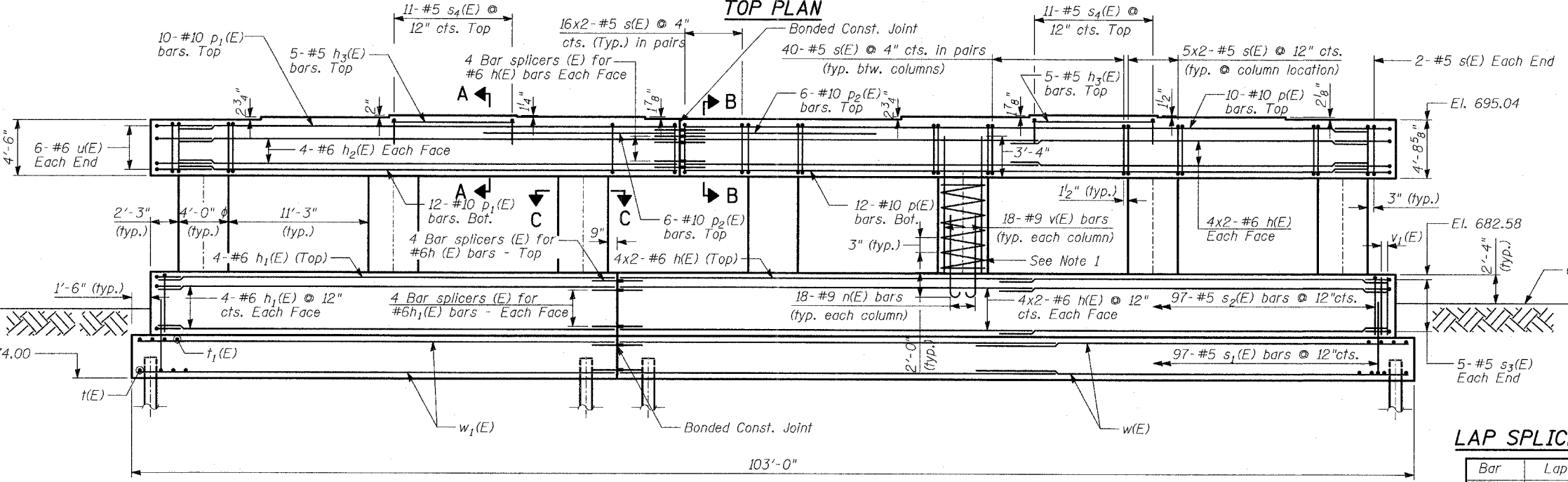
STATE OF ILLINOIS
DEPARTMENT OF TRANSPORTATION

ROUTE NO.	SECTION	COUNTY	TOTAL SHEETS	SHEET NO.	SHEET NO. - S-45 S-66 SHEETS
346	*	LAKE	469	214	
FED. ROAD DIST. NO.		ILLINOIS	FED. AID PROJECT-		
* 125X-HB-(1&2) R-1		CONTRACT # 60826			



BEARING SEAT
ELEVATIONS

Girder	Seat Elev.
1	694.82
2	695.05
3	695.22
4	695.12
5	694.96
6	694.98
7	695.19
8	695.35
9	695.22
10	695.04



LAP SPLICES

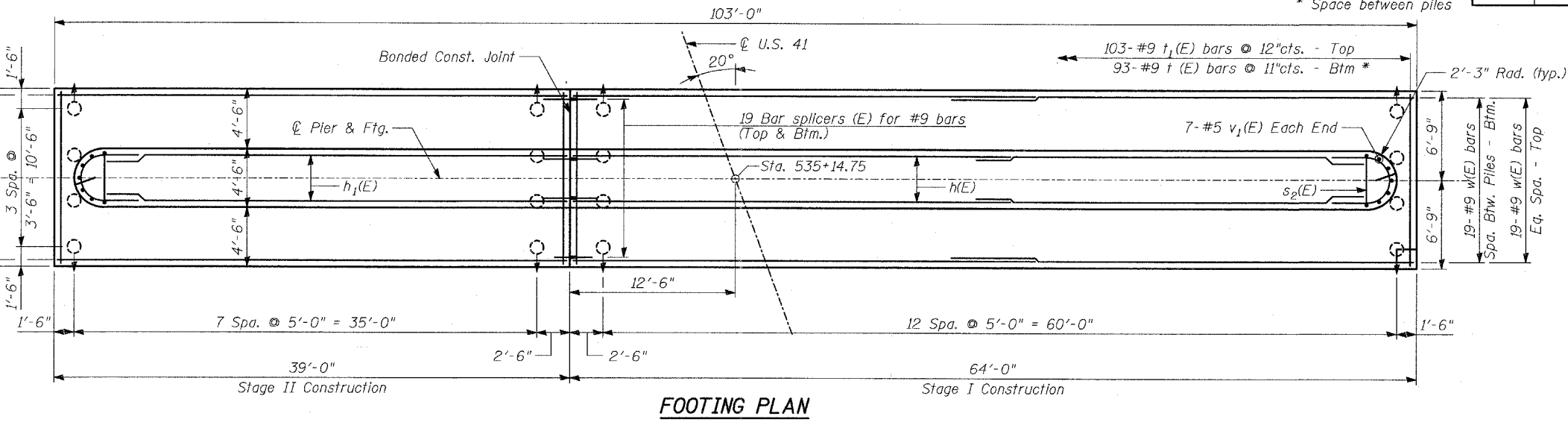
Bar	Lap
#5	2'-2"
#6	2'-7"
#8	4'-6"
#9	5'-9"

PILE DATA

Type: Metal Shell - 14" ϕ x $\frac{3}{8}$ " wall
 Nominal Required Bearing: 390 kips
 Allowable Resistance Available: 130 kips
 Est. Length: 48.0'
 No. Req'd: 83 Plus 1 Test Pile

TYLIN INTERNATIONAL

DESIGNED	- MB
CHECKED	- AD
DRAWN	- KA, MAF
CHECKED	- AD



- Notes:**
- For spirals in each column, provide $\frac{1}{2}$ extra turns top & bottom. Extend spiral 2" into pier cap. Provide 4-#4 spacers or equivalent.
 - Space reinforcement in cap to miss anchor bolts.
 - Pour steps monolithically with cap.
 - Space bottom reinforcement in footing to miss piles.
 - See Sheet S-46 of S-66, for Sections A-A, B-B and C-C.

PIER 2

FAP 346 (U.S. ROUTE 41 - SKOKIE
HIGHWAY) OVER ILLINOIS ROUTE 132
SECTION 125X-HB-(1&2)R-1
LAKE COUNTY
S.N. 049-0209