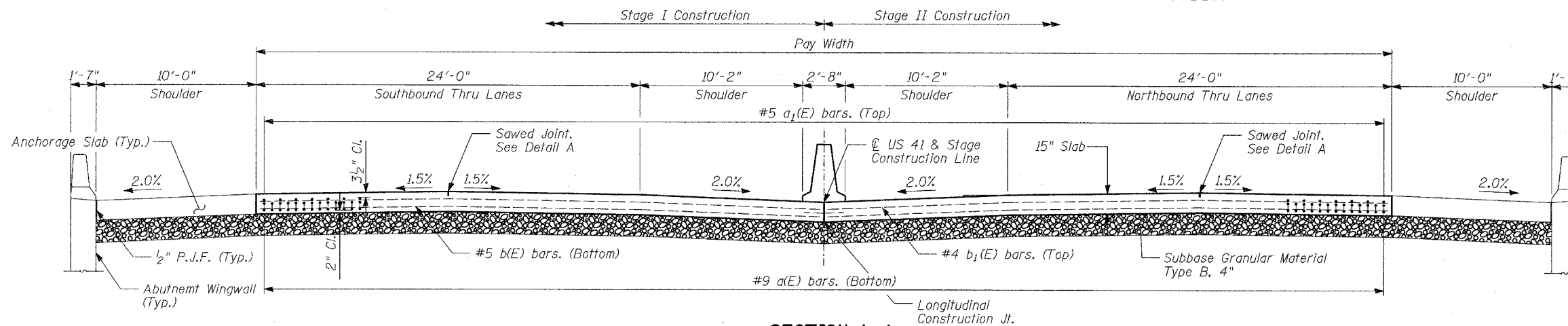
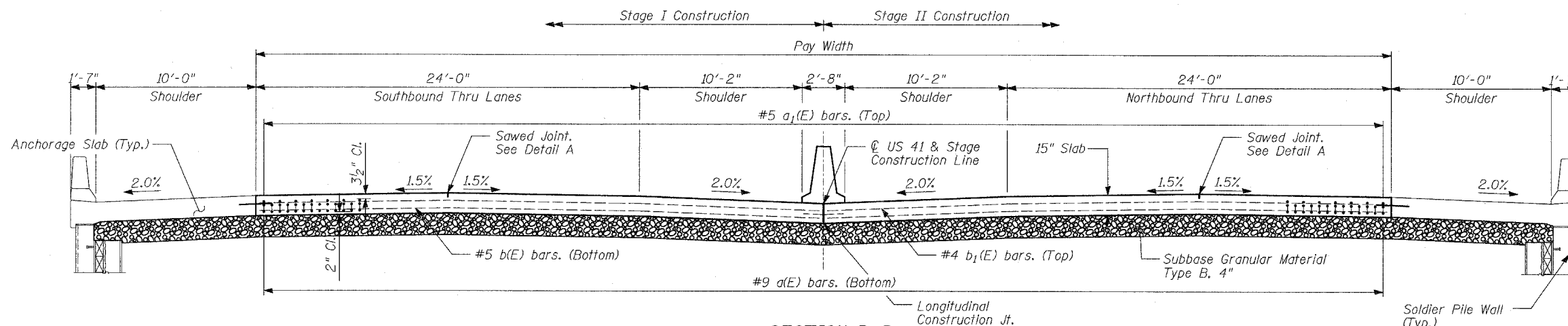


STATE OF ILLINOIS
DEPARTMENT OF TRANSPORTATION

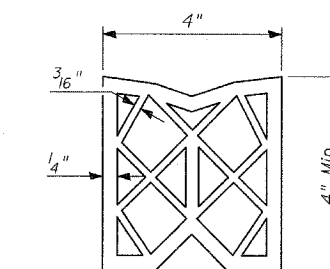
ROUTE NO.	SECTION	COUNTY	DIST.	SHEET	SHEET NO. - S-48 S-86 SHEETS
346	*	LAKE	469	217	
FED. ROAD DIST. NO.		ILLINOIS		FED. AID PROJECT -	
* 125X-HB-(1&2) R-1		CONTRACT # 60826			



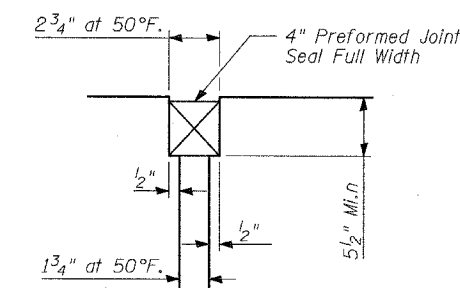
SECTION A-A
(See Plan for Dimensions not shown)



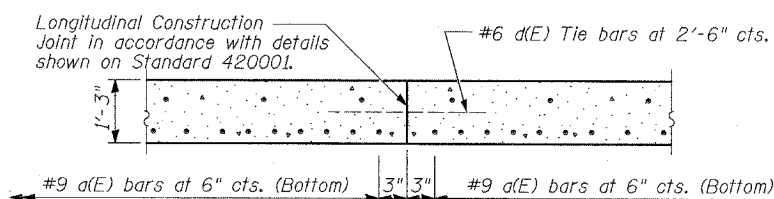
SECTION B-B
(See Plan for Dimensions not shown)



PREFORMED JOINT SEAL

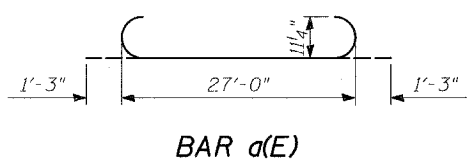


DETAIL B

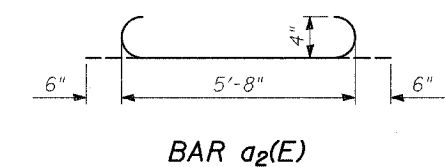


OPTIONAL LONGITUDINAL CONSTRUCTION JOINT

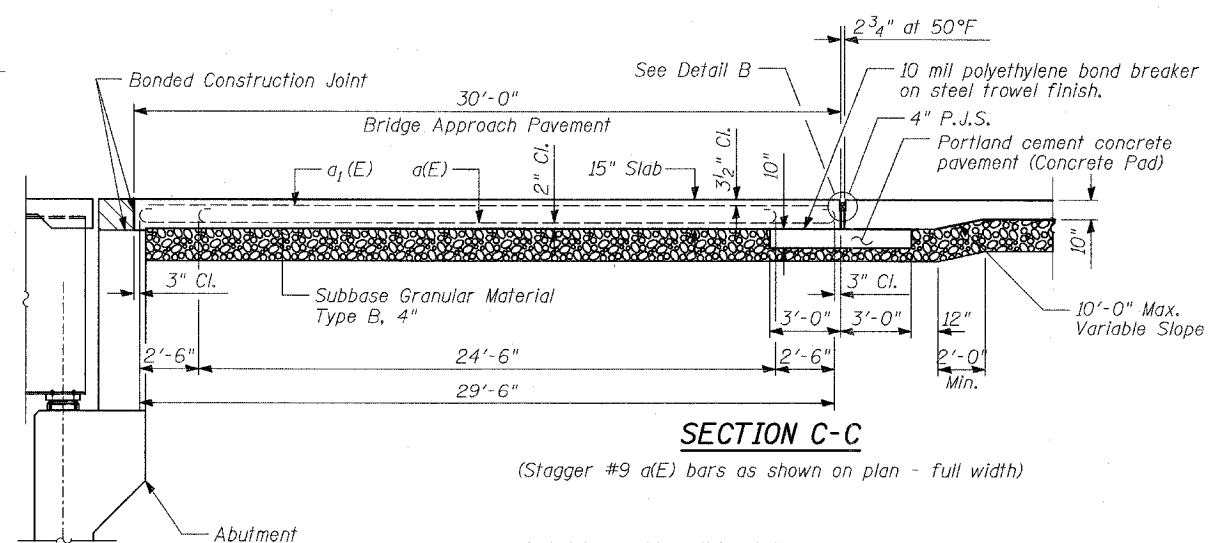
As approved by the Engineer, the Contractor may elect to reduce the widths of pour by use of the Optional Longitudinal Construction Joint shown. Joints shall be located at the edge of a traffic lane.



BAR a(E)



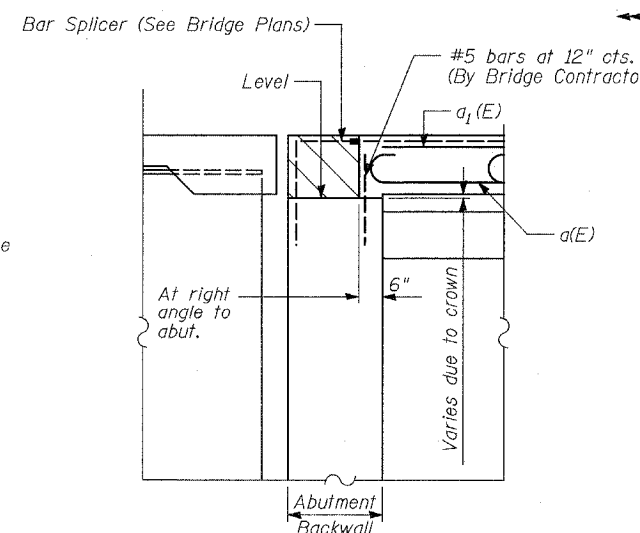
BAR a2(E)



SECTION C-C
(Stagger #9 a(E) bars as shown on plan - full width)

DESIGN STRESSES

$f_y = 60,000 \text{ psi}$
 $f'_c = 3,500 \text{ psi}$
 $n = 8.5$



SECTION D-D

TYLIN INTERNATIONAL

DESIGNED	- MAF
CHECKED	- AD
DRAWN	- MAF
CHECKED	- AD

**NORTH BRIDGE APPROACH PAVEMENT
(2 OF 2)**

FAP 346 (U.S. ROUTE 41 - SKOKIE
HIGHWAY) OVER ILLINOIS ROUTE 132
SECTION 125X-HB-(1&2)R-1
LAKE COUNTY
S.N. 049-0209