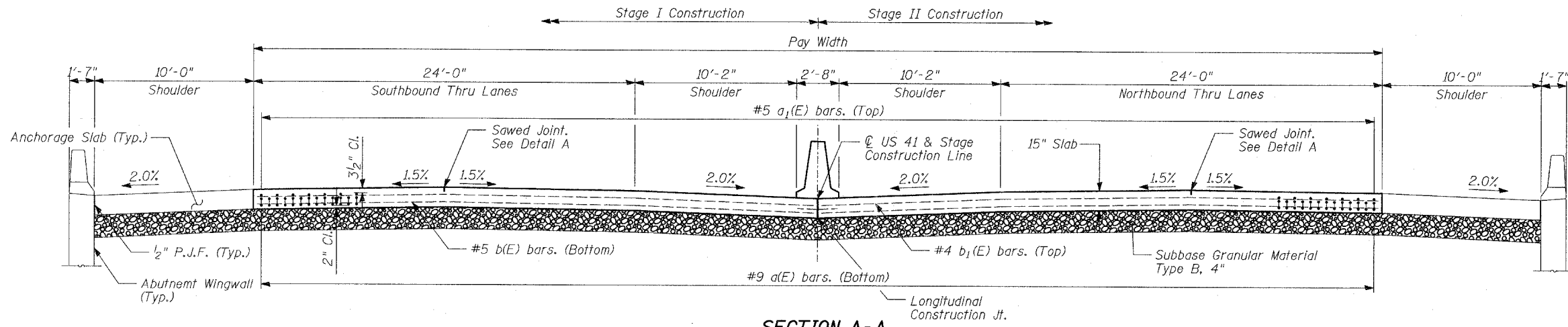


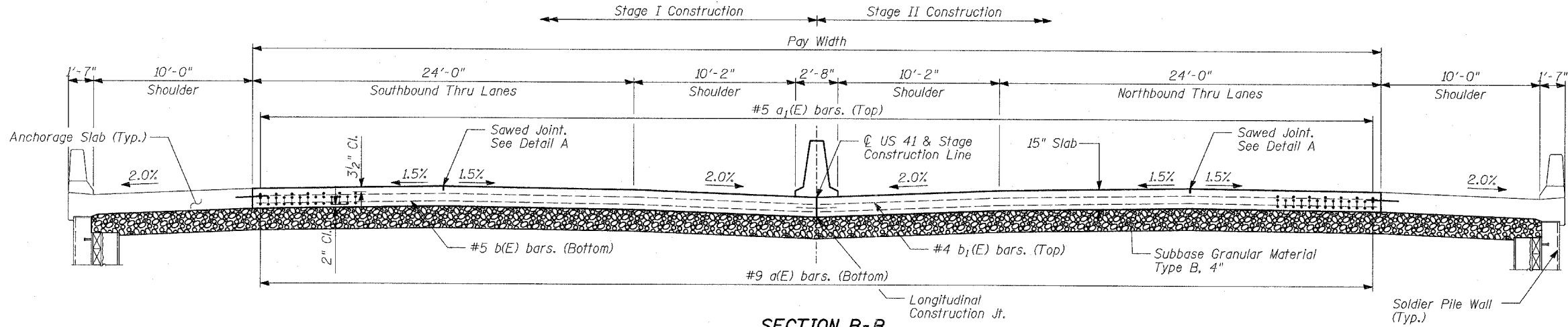
STATE OF ILLINOIS  
DEPARTMENT OF TRANSPORTATION

ROUTE NO.	SECTION	COUNTY	SHEET NO.	SHEET NO.
346	*	LAKE	469	219
FED. ROAD DIST. NO.	ILLINOIS	FED. AID PROJECT		
* 125X-HB-(1&2) R-1		CONTRACT # 60826		



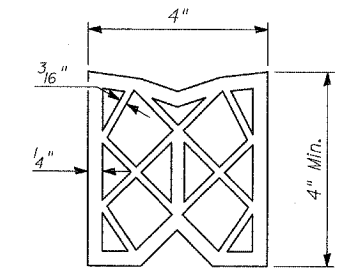
**SECTION A-A**

(See Plan for Dimensions not shown)

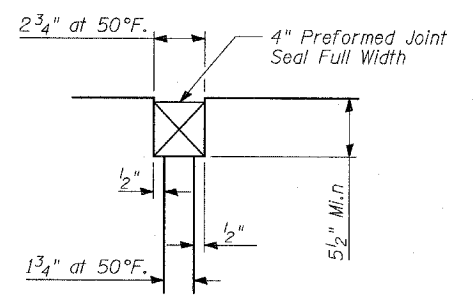


**SECTION B-B**

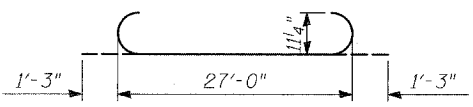
(See Plan for Dimensions not shown)



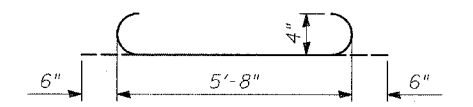
**PREFORMED JOINT SEAL**



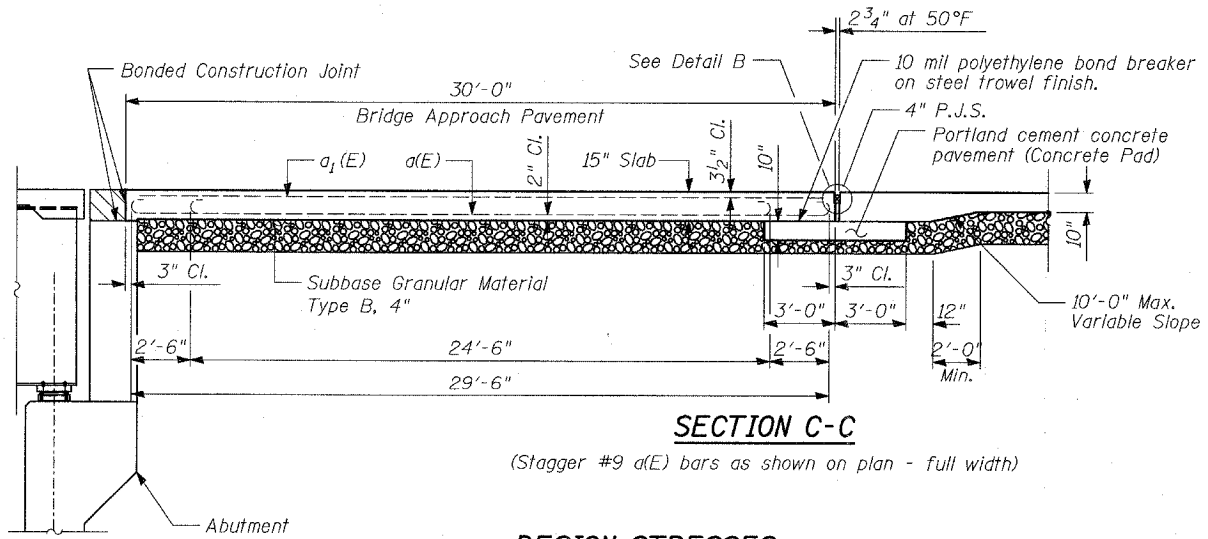
**DETAIL B**



**BAR a1(E)**



**BAR a2(E)**

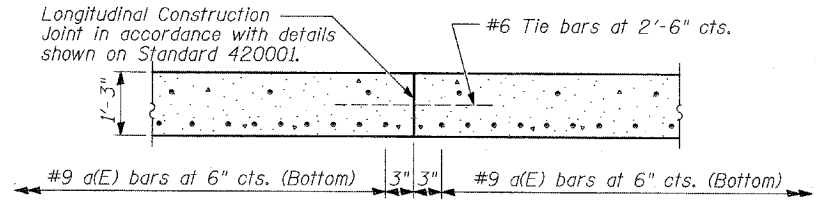


**SECTION C-C**

(Stagger #9 a(E) bars as shown on plan - full width)

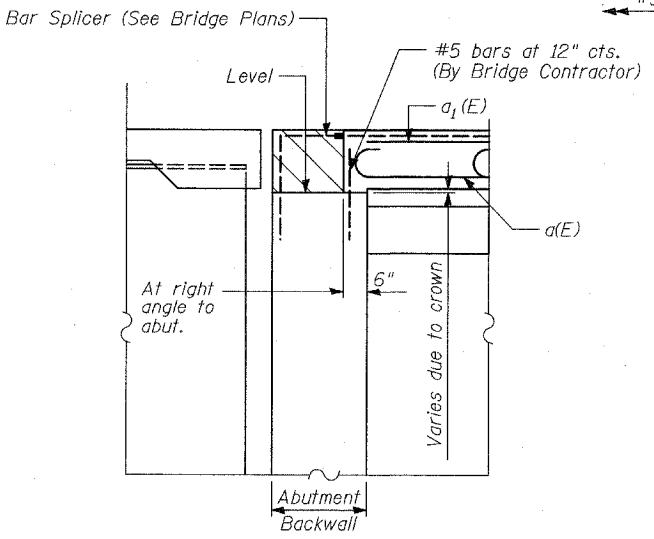
**DESIGN STRESSES**

$f_y = 60,000 \text{ psi}$   
 $f'_c = 3,500 \text{ psi}$   
 $n = 8.5$



**OPTIONAL LONGITUDINAL CONSTRUCTION JOINT**

As approved by the Engineer, the Contractor may elect to reduce the widths of pour by use of the Optional Longitudinal Construction Joint shown. Joints shall be located at the edge of a traffic lane.



**SECTION D-D**

**TYLIN INTERNATIONAL**

DESIGNED	- MAF
CHECKED	- AD
DRAWN	- MAF
CHECKED	- AD

**SOUTH BRIDGE APPROACH PAVEMENT**  
(2 OF 2)

FAP 346 (U.S. ROUTE 41 - SKOKIE HIGHWAY) OVER ILLINOIS ROUTE 132  
SECTION 125X-HB-(1&2)R-1  
LAKE COUNTY  
S.N. 049-0209