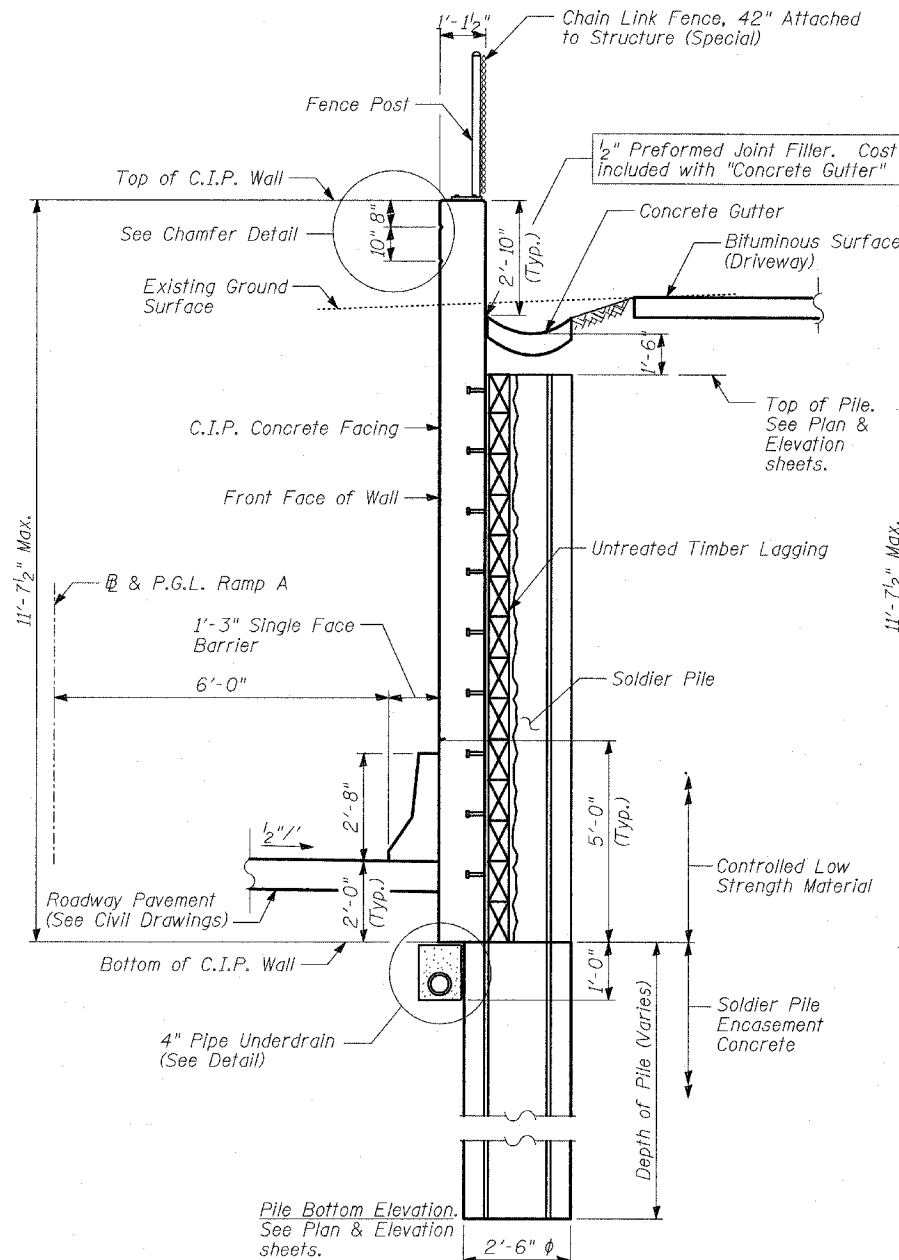
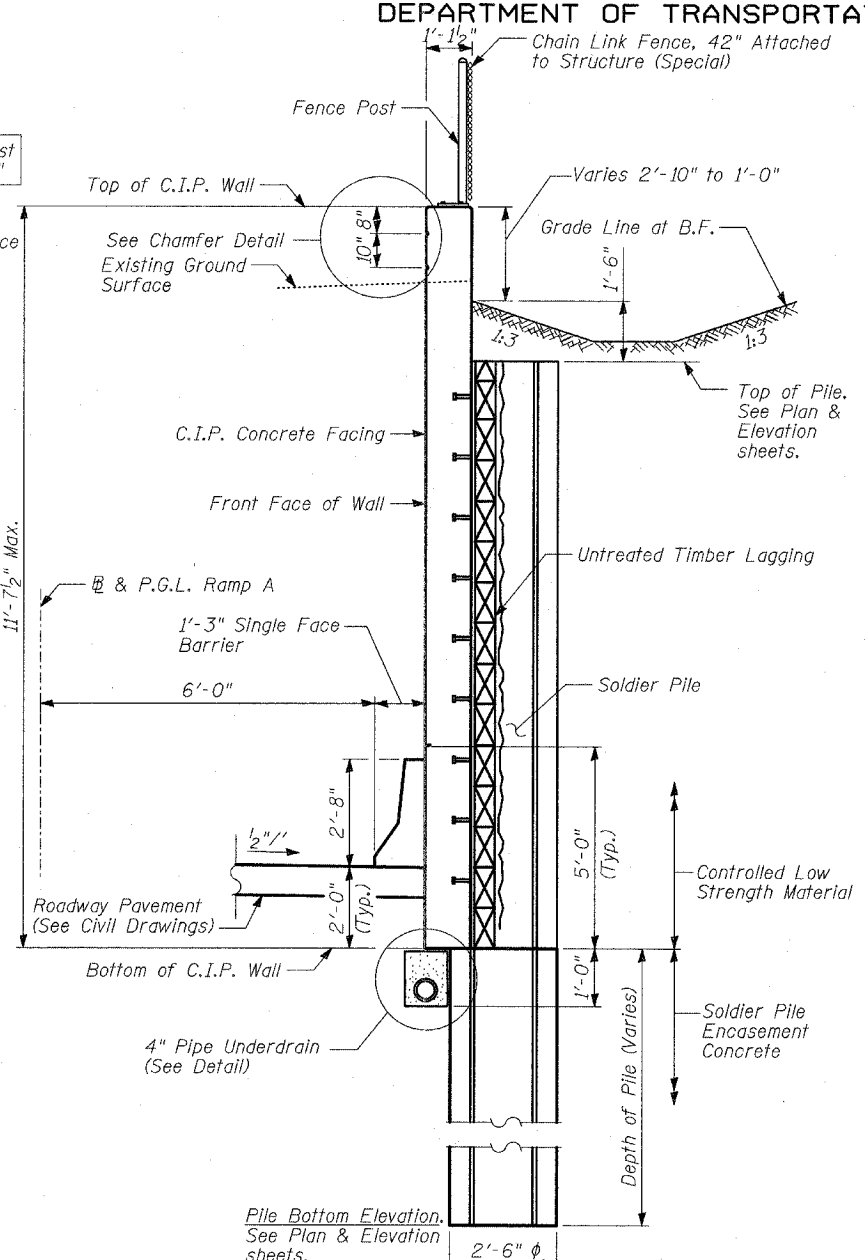


STATE OF ILLINOIS  
DEPARTMENT OF TRANSPORTATION

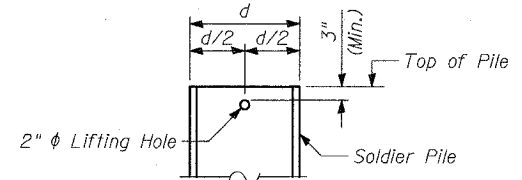
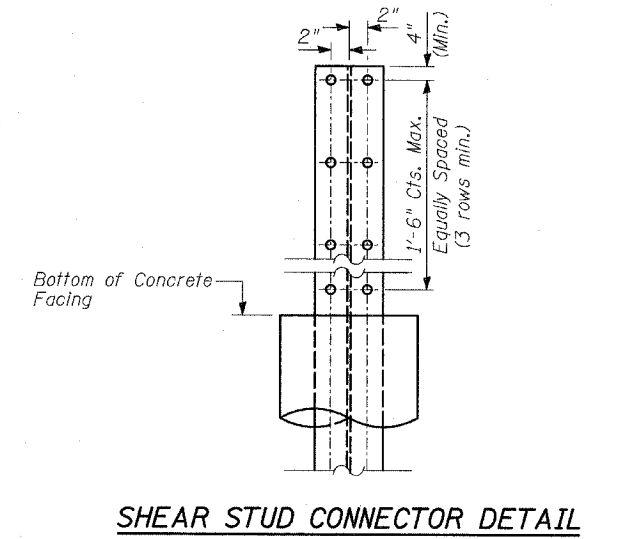
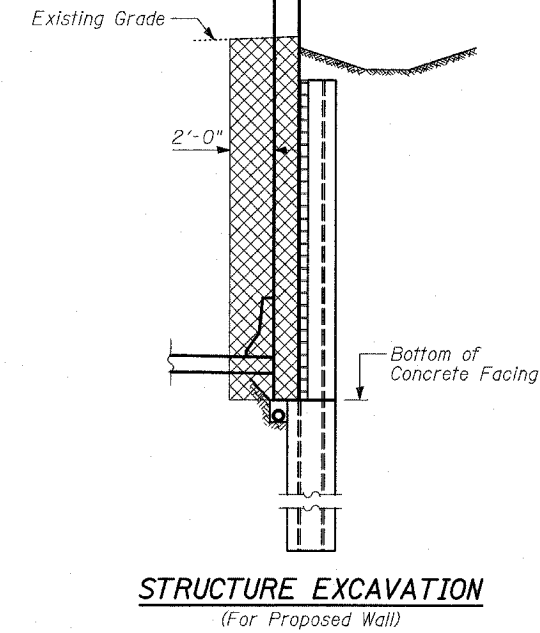
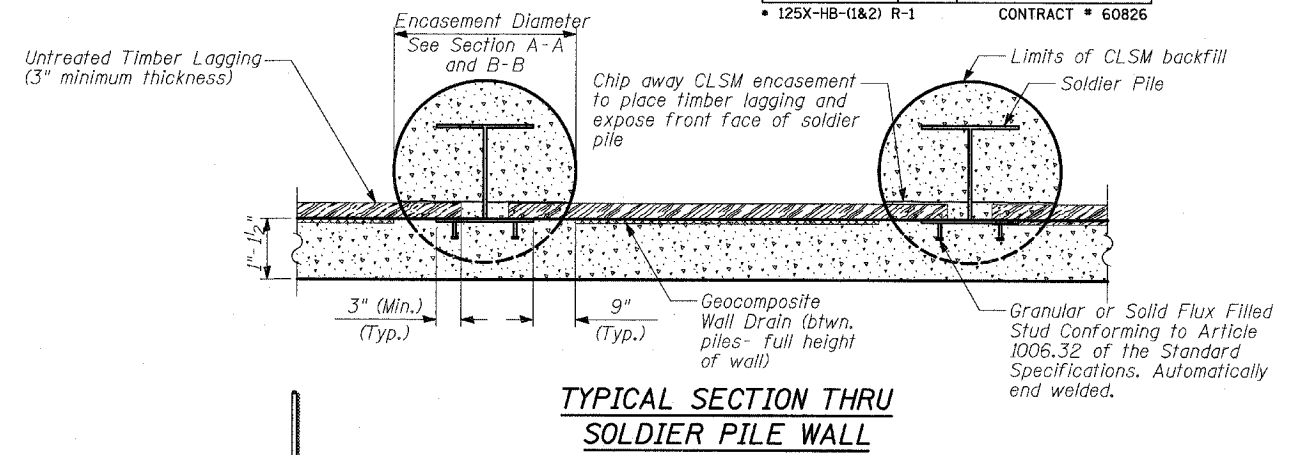
ROUTE NO.	SECTION	COUNTY	TOTAL SHEETS	SHEET NO.	SHEET NO. - 7
346		LAKE	469	2A2	15 SHEETS
FED. ROAD DIST. NO.	ILLINOIS	FED. AID PROJECT			
			CONTRACT # 60826		



**SECTION A-A**  
Sta. 106+23.98 to Sta. 108+33.98

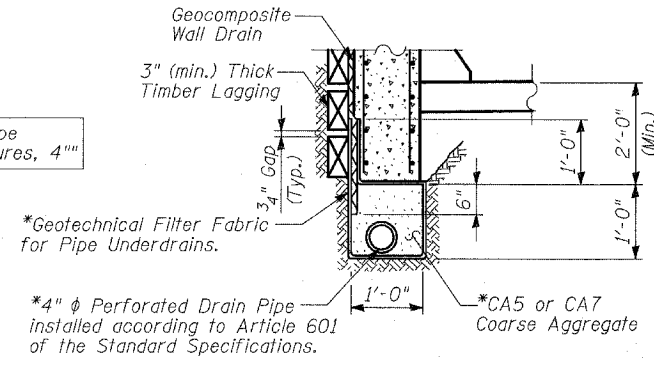


**SECTION B-B**  
Sta. 108+33.98 to Sta. 110+23.60

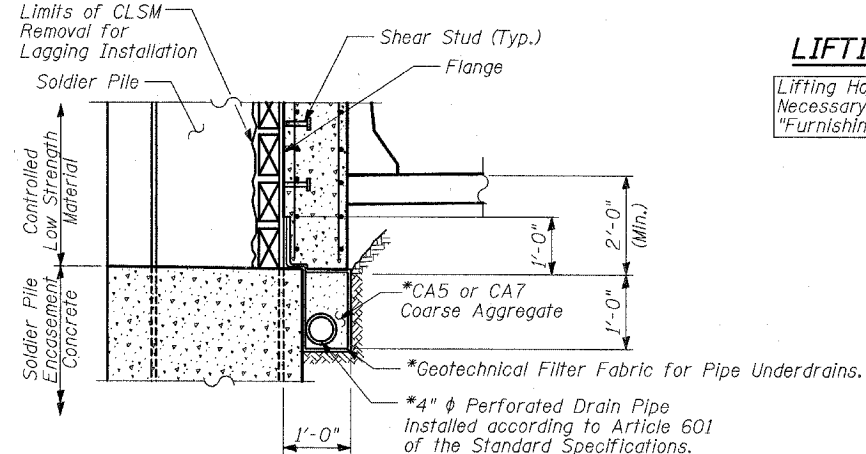


- NOTES:**
- The Geocomposite Wall Drain shall be constructed according to Section 591 of the Standard Specifications.
  - The Contractor is responsible for the design and performance of the lagging using no less than 3" nominal rough-sawn thickness and the minimum tabulated unit stress in bending ( $f_b$ ), used in the design of timber lagging shall be 1000 psi.
  - Stud shear connectors shall be  $3/4$ "  $\phi$  x 6" granular or solid flux filled headed studs, automatically end welded to the front flange of the soldier piles.

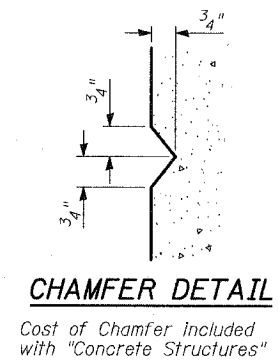
\*Cost Included with "Pipe Underdrains for Structures, 4"



**PIPE UNDERDRAIN DETAIL BETWEEN SOLDIER PILES**



**PIPE UNDERDRAIN DETAIL AT SOLDIER PILE**



**WALL J DETAILS (1 OF 2)**

FAP 346 (U.S. ROUTE 41 - SKOKIE HIGHWAY) OVER ILLINOIS ROUTE 132  
SECTION 125X-HB-(1&2)R-1  
LAKE COUNTY  
S.N. 049-W031

**TYLIN INTERNATIONAL**

DESIGNED	- MB
CHECKED	- AD
DRAWN	- MAF
CHECKED	- MAF