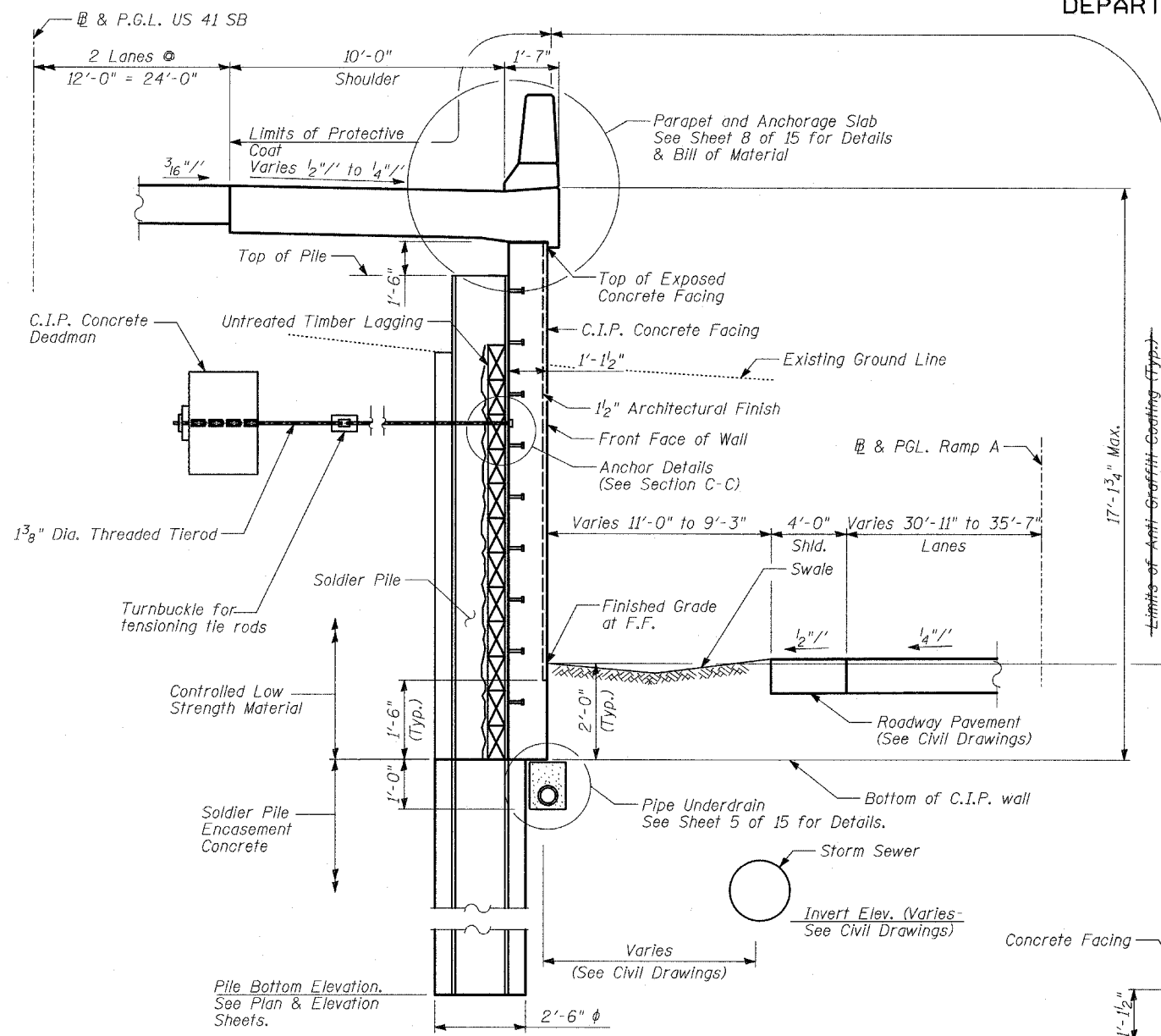
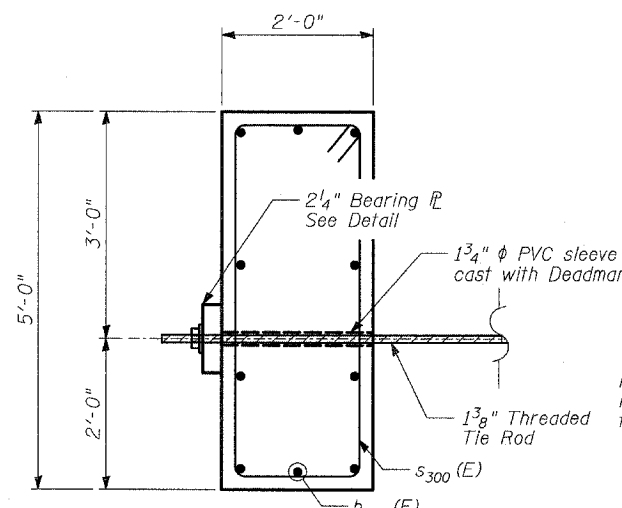


STATE OF ILLINOIS
DEPARTMENT OF TRANSPORTATION

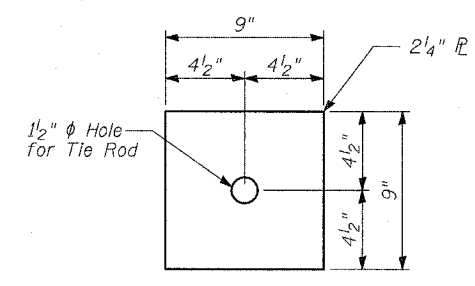
ROUTE NO.	SECTION	COUNTY	TOTAL SHEETS	SHEET NO.
346	*	LAKE	469	15
FED. ROAD DIST. NO.		ILLINOIS	FED. AID PROJECT	SHEETS
		125X-HB-(1&2) R-1	CONTRACT # 60826	15 SHEETS



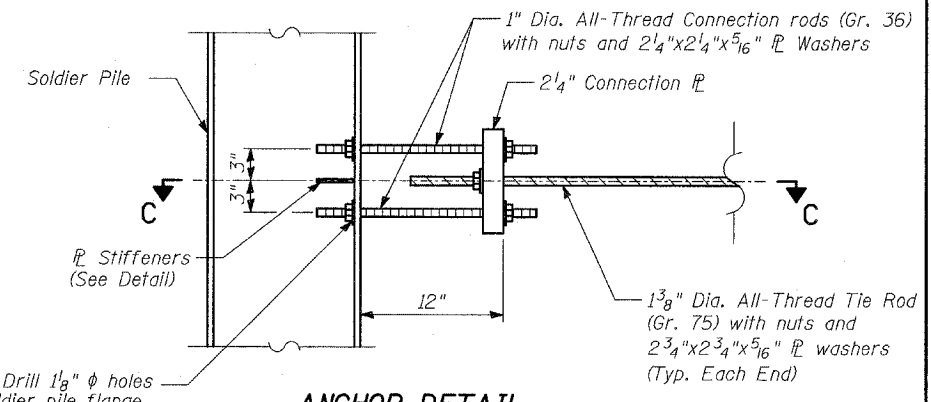
SECTION B-B
Sta. 529+03.95 to Sta. 529+93.95



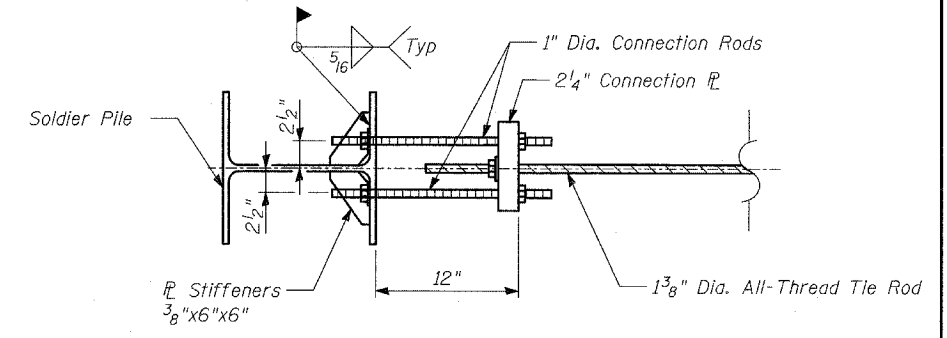
SECTION - CONCRETE DEADMAN



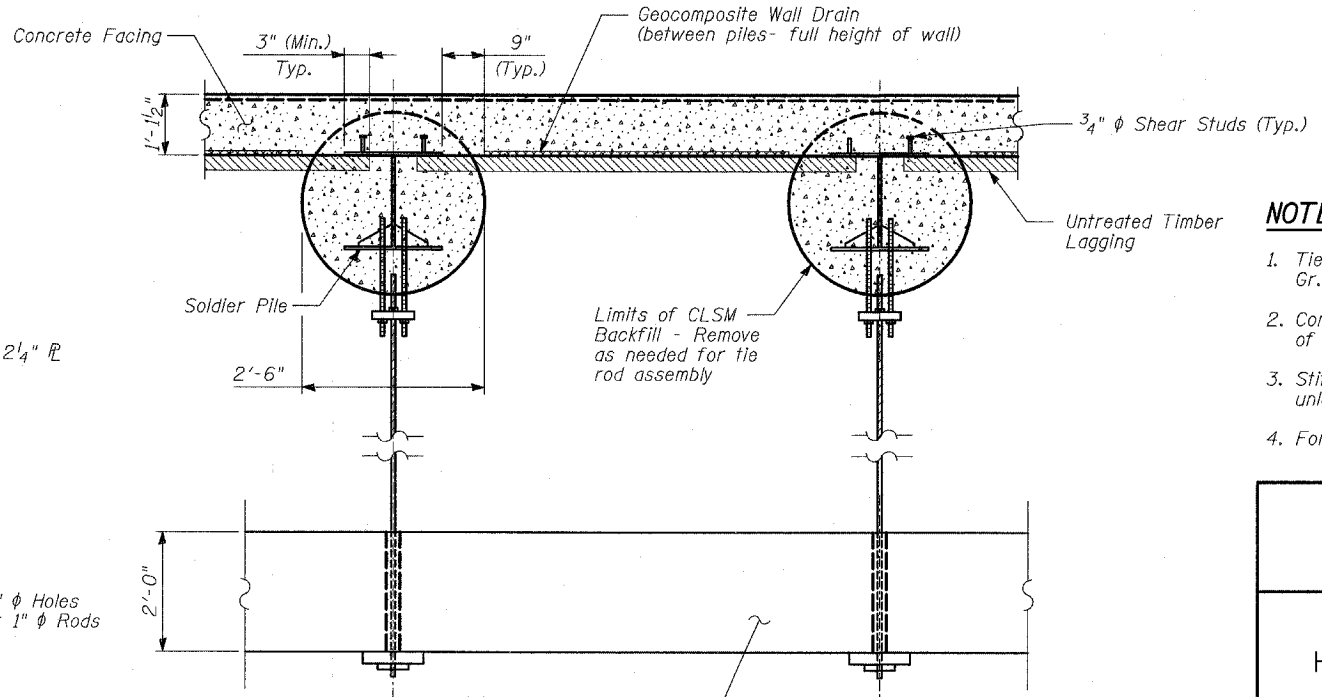
BEARING PLATE DETAIL



ANCHOR DETAIL (ELEVATION)



SECTION C-C (PLAN)



TYPICAL SECTION THRU WALL (With Tiebacks)

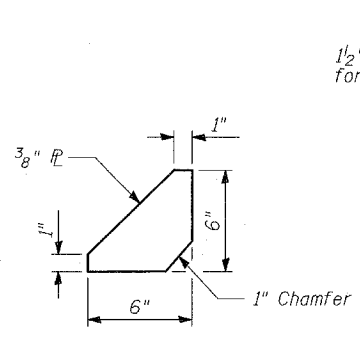
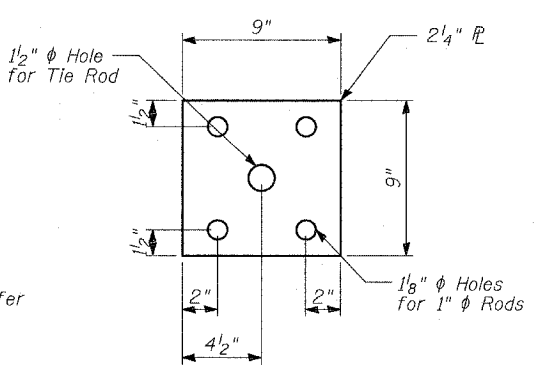


PLATE STIFFENER DETAIL



CONNECTION PLATE DETAIL

- NOTES:**
1. Tie Rods shall meet the requirements of ASTM A615, Gr. 75 of the diameter specified.
 2. Connection Rods shall meet the requirements of ASTM A36 of the diameter specified.
 3. Stiffener, Bearing, and Connection plates shall be ASTM A36, unless otherwise noted.
 4. For additional Soldier Pile Wall details, see Sheet 5 of 15.

WALL K SECTIONS AND DETAILS (2 OF 2)

FAP 346 (U.S. ROUTE 41 - SKOKIE HIGHWAY) OVER ILLINOIS ROUTE 132
SECTION 125X-HB-(1&2)R-1
LAKE COUNTY
S.N. 049-W032

TYLIN INTERNATIONAL

DESIGNED	- MB
CHECKED	- AD
DRAWN	- CM
CHECKED	- AD