

Benchmark: BM #6 - Square cut in base of L.P. at N.E. corner of IL Route 132 and Magnolia (Speedway) 45.14' LT, Sta. 32+13.24 (IL 132 E.B. @), Elev. 696.47.

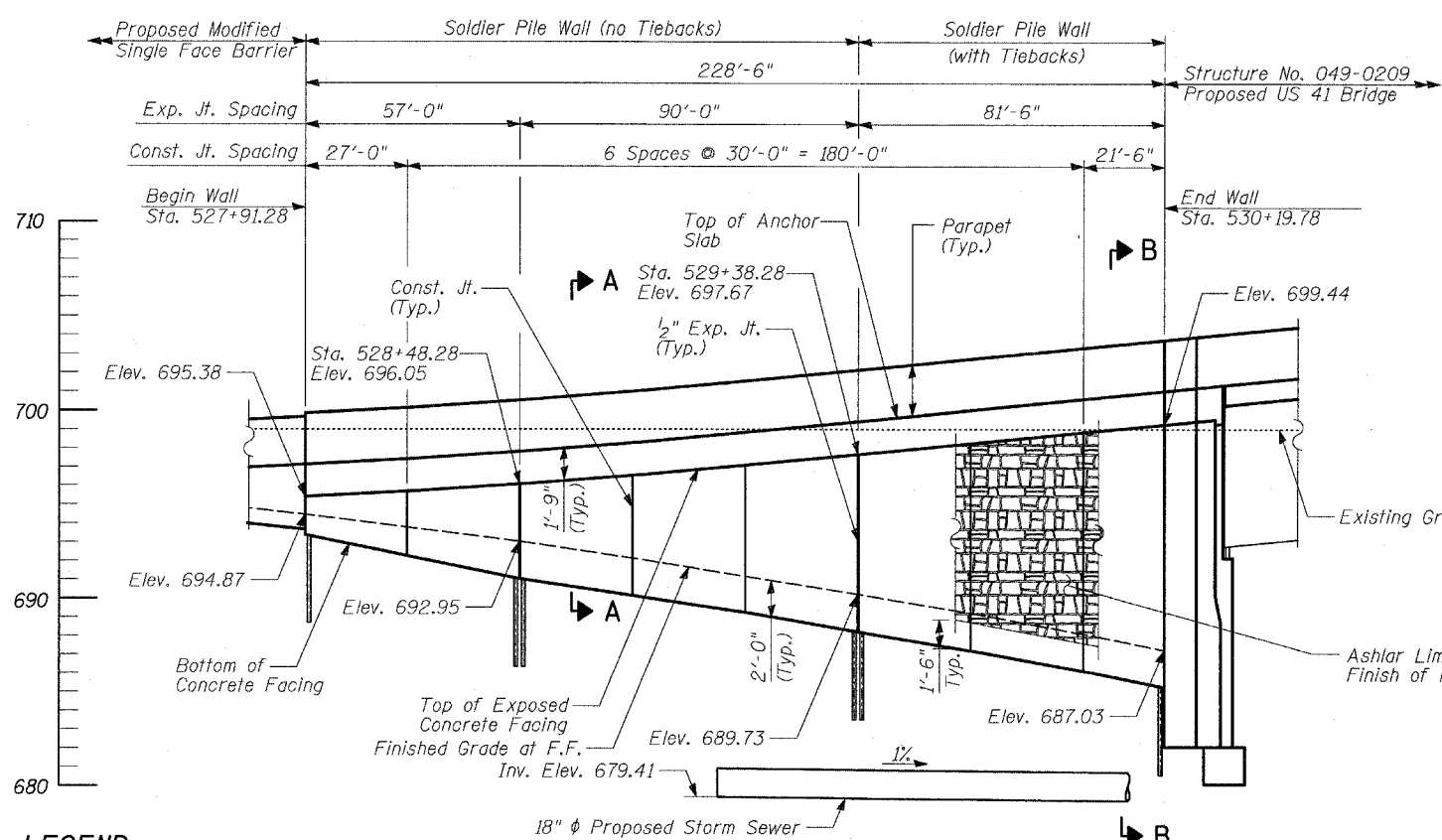
Existing Structure: None.

STATE OF ILLINOIS
DEPARTMENT OF TRANSPORTATION

ROUTE NO.	SECTION	COUNTY	SHEETS	SHEET NO.
346	*	LAKE	469	16
SHEETS				
FED. ROAD DIST. NO.	ILLINOIS	FED. AID PROJECT		
125X-HB-(1&2) R-1		CONTRACT # 60826		

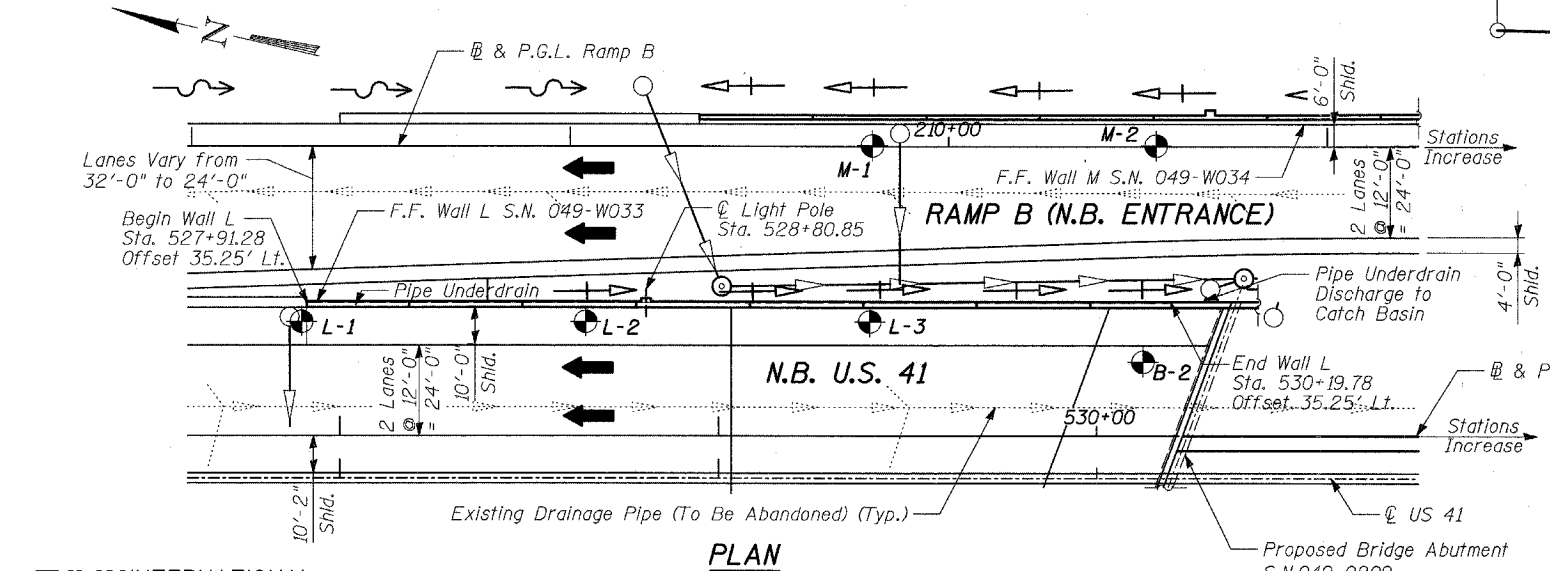
TOTAL BILL OF MATERIAL

ITEM	UNIT	TOTAL
Structure Excavation	CU YD	325
Concrete Structures	CU YD	109
Concrete Superstructure	CU YD	158
Protective Coat	SQ YD	350
Form Liner Textured Surface	SQ YD	175
Furnishing and Erecting Structural Steel	POUND	4,220
Stud Shear Connectors	EACH	344
Untreated Timber Lagging	SQ FT	1,571
Furnishing Soldier Piles (HP Section)	FOOT	168
Furnishing Soldier Piles (W Section)	FOOT	662
Reinforcement Bars, Epoxy Coated	POUND	28,340
Geocomposite Wall Drain	SQ YD	188
Pipe Underdrains for Structures, 4"	FOOT	229
Drilling and Setting Soldier Piles (in Soil)	CU FT	4,398
Anti Graffiti Coating	SQ FT	2,485



- LEGEND**
- ⊙ - Manhole
 - - Catch Basin
 - ⊕ - Soil Boring
 - - Prop. Storm Sewer
 - - Exist. Drain Pipe
 - - Proposed Drainage Swale

ELEVATION
(Looking at B.F.)



PLAN

DESIGN SPECIFICATIONS

2002 AASHTO Standard Specifications For Highway Bridges

DESIGN STRESSES

FIELD UNITS

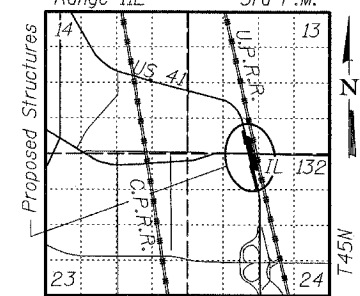
- $f'_c = 3,500$ psi
- $f_y = 60,000$ psi (reinforcement)
- $f_y = 36,000$ psi (structural steel M270 Grade 36)
- $f'_s = 150,000$ psi (tie rods)

NOTES:

- Wall stations and offsets are given to the front face of the concrete facing, and are measured from NB US 41 Baseline.
- Existing utilities in conflict with soldier pile wall construction shall be abandoned or relocated according to direction given in roadway plans.
- Reinforcement bars shall conform to the requirements of ASTM A 706 Gr. 60 (IL Modified). See Special Provisions.
- Reinforcement bars designated (E) shall be epoxy coated.
- All exposed concrete edges shall be chamfered $\frac{3}{4}$ " except as noted.
- Slipforming of the parapet is not allowed.
- All construction joints shall be bonded.
- Soldier Pile Wall design can accommodate disturbance in front of wall for installation of proposed storm sewer. Lagging pay limits are to proposed bottom of C.I.P. concrete facing.

APPROVED
FOR STRUCTURAL ADEQUACY ONLY

Ralph E. Anderson (T.M.)
ENGINEER OF BRIDGES AND STRUCTURES



TYLIN INTERNATIONAL

DESIGNED	- MB
CHECKED	- CM/AD
DRAWN	- DE
CHECKED	- CM/AD



Signed *[Signature]*
Spiros Pantazis, S.E., Il. Lic. No. 081-006448
Expire 11-30-2008.
Date 5/14/08
For drawings 1 thru 16 of 16

INDEX OF SHEETS

- WALL L GENERAL PLAN, STA 527+91.28 TO STA 530+28.28
- WALL L PLAN AND ELEVATION, STA 527+91.28 TO 528+48.28
- WALL L PLAN AND ELEVATION, STA 528+48.28 TO 529+38.28
- WALL L PLAN AND ELEVATION, STA 529+38.28 TO 530+28.28
- WALL L SECTIONS AND DETAILS (1 OF 2)
- WALL L SECTIONS AND DETAILS (2 OF 2)
- WALL L TIE BACK AND DEADMAN DETAILS
- WALL L ANCHORAGE SLAB AND PARAPET (1 OF 2)
- WALL L ANCHORAGE SLAB AND PARAPET (2 OF 2)
- WALL L MISCELLANEOUS DETAILS
- WALL L RUSTICATION DETAILS
- BORING LOG L-1
- BORING LOG L-2
- BORING LOG L-3
- BORING LOG B-2 (1 OF 2)
- BORING LOG B-2 (2 OF 2)

WALL L
GENERAL PLAN
STA 527+91.28 TO STA 530+19.78

FAP 346 (U.S. ROUTE 41 - SKOKIE HIGHWAY) OVER ILLINOIS ROUTE 132
SECTION 125X-HB-(1&2)R-1
LAKE COUNTY
S.N. 049-W033