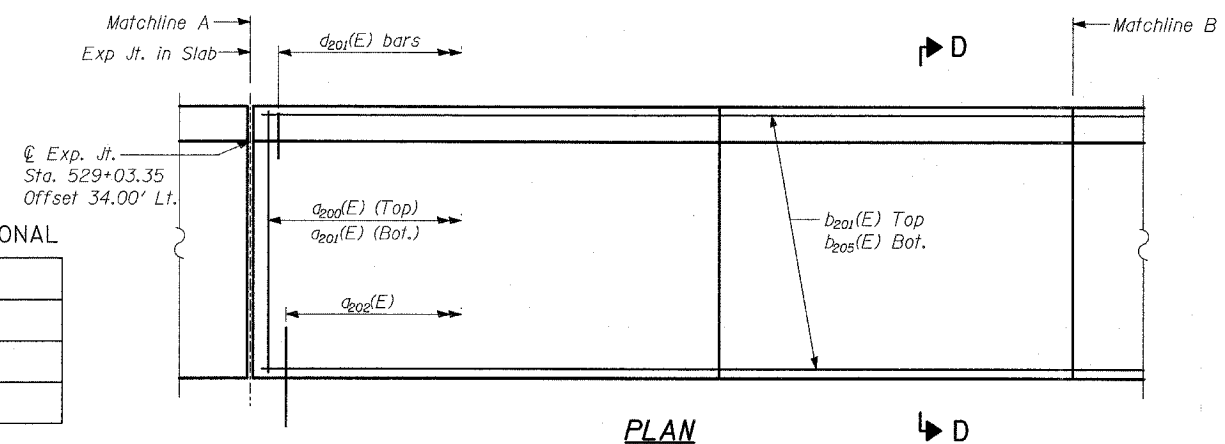
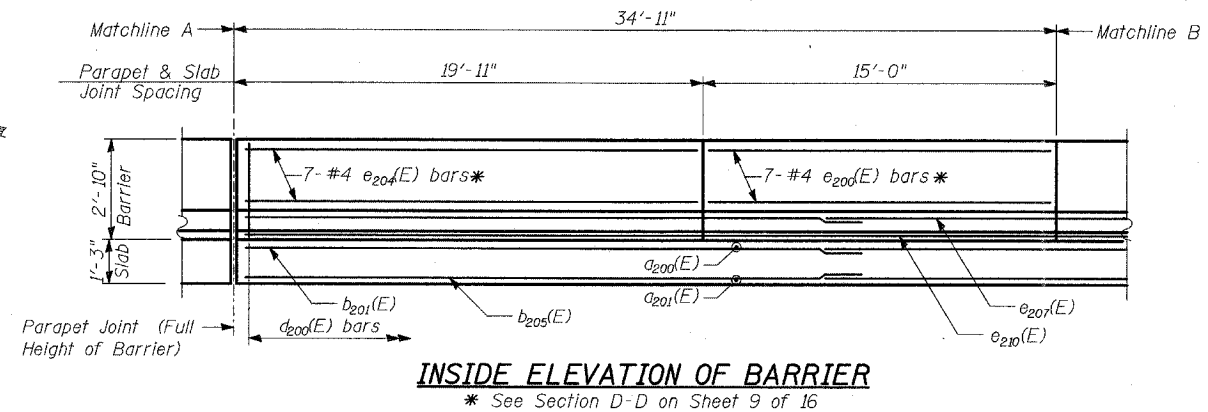
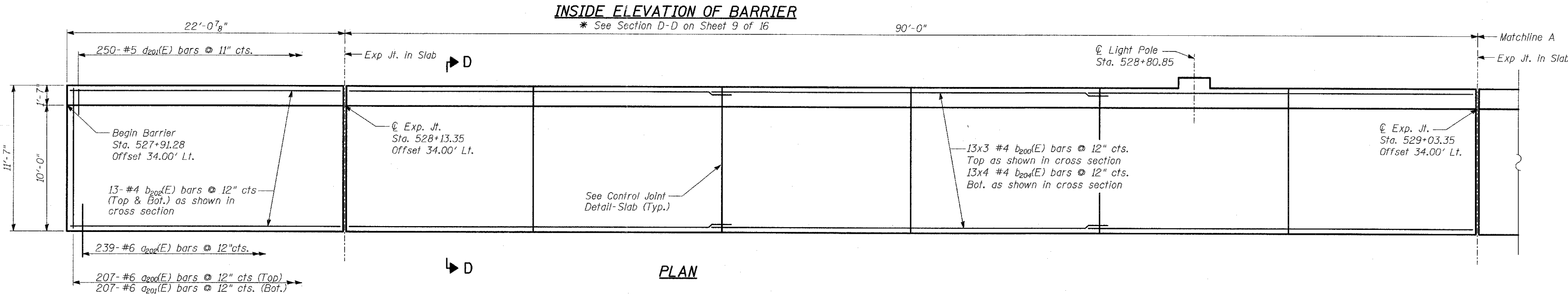
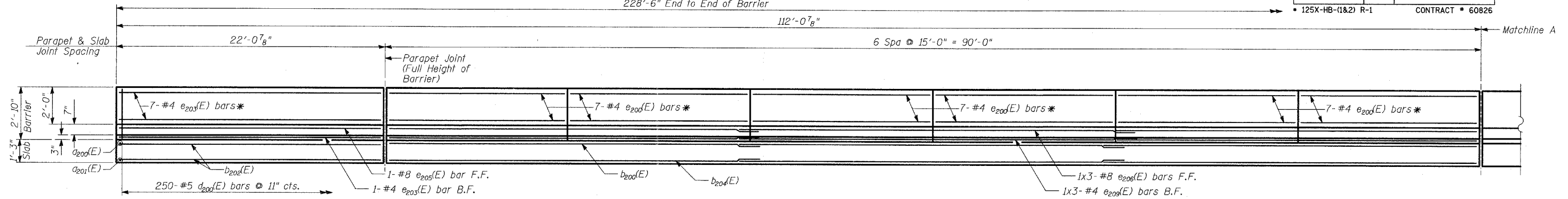


STATE OF ILLINOIS
DEPARTMENT OF TRANSPORTATION
228'-6" End to End of Barrier

ROUTE NO.	SECTION	COUNTY	TOTAL SHEETS	SHEET NO.	SHEET NO. - 8
346		LAKE	469	273	16 SHEETS
FED. ROAD DIST. NO.	ILLINOIS	FED. AID PROJECT			
			CONTRACT # 60826		



- NOTES:**
- Offsets are measured from \square & P.G.L. NB US 41.
 - Work this sheet with Sheet 9 of 16.
 - See Sheet 10 of 16 for Light Pole Mount Details.
 - Bars indicated thus 20x3- #5 etc. indicates 20 lines of bars with 3 lengths per line.

TYLIN INTERNATIONAL

DESIGNED	- MB
CHECKED	- AD
DRAWN	- DE
CHECKED	- AD

LAP SPLICES

Bar	Lap
#4	1'-8"
#5	2'-2"
#6	2'-7"
#8	4'-6"

**WALL L
ANCHORAGE SLAB AND PARAPET
(1 OF 2)**

FAP 346 (U.S. ROUTE 41 - SKOKIE
HIGHWAY) OVER ILLINOIS ROUTE 132
SECTION 125X-HB-(1&2)R-1
LAKE COUNTY
S.N. 049-W033