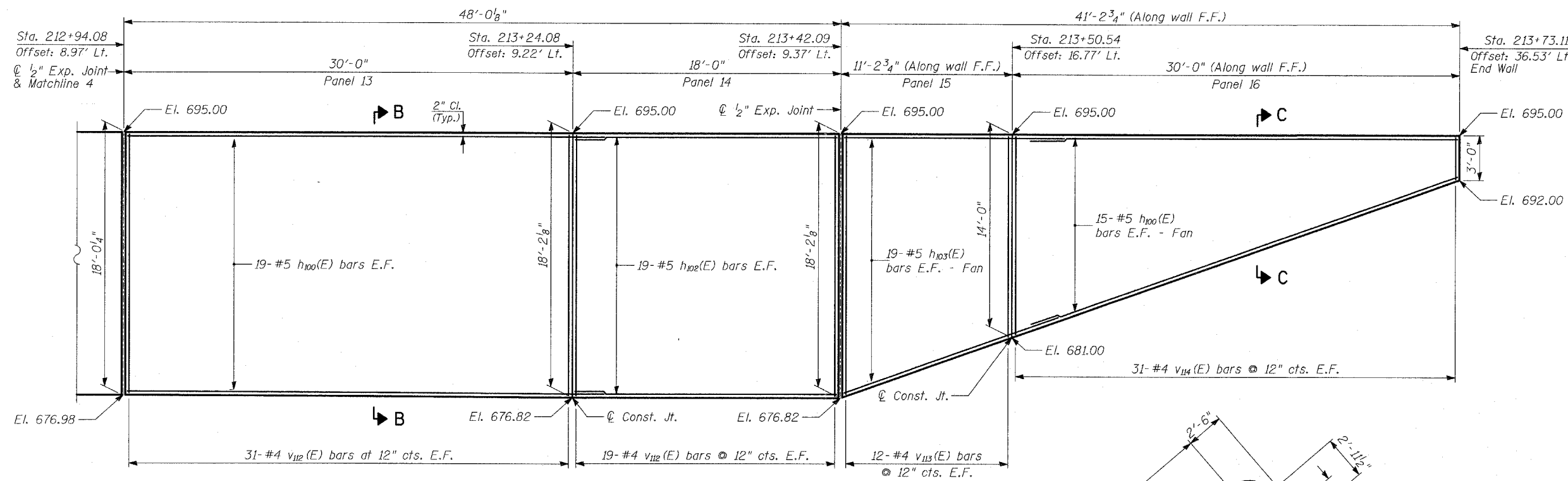
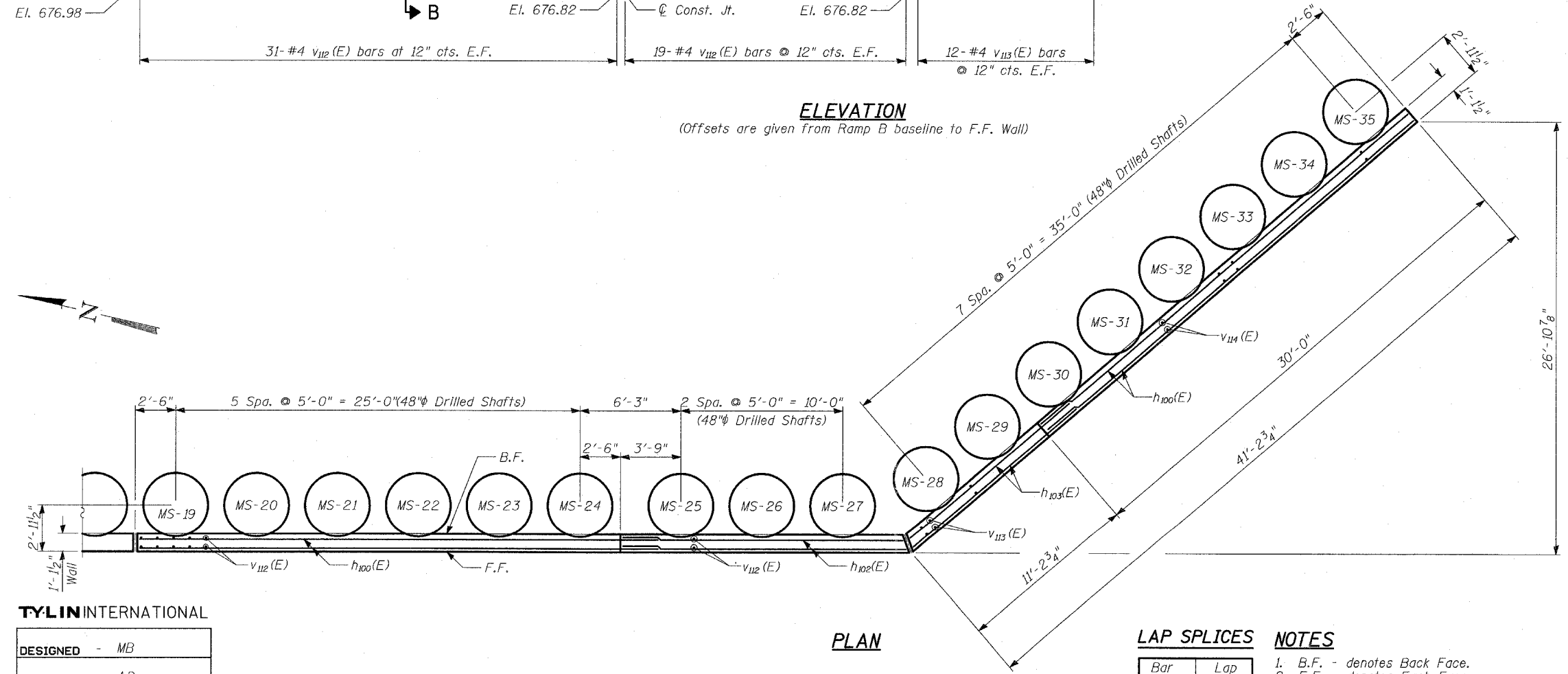


STATE OF ILLINOIS
DEPARTMENT OF TRANSPORTATION

ROUTE NO.	SECTION	COUNTY	TOTAL SHEETS	SHEET NO.
346		LAKE	469	237
FED. ROAD DIST. NO.		ILLINOIS	FED. AID PROJECT-	
		125X-HB-(1&2) R-1	CONTRACT # 60826	



ELEVATION
(Offsets are given from Ramp B baseline to F.F. Wall)



PLAN

DRILLED SHAFT SUMMARY

Shaft Label	Length	Top Elevation	Bottom Elevation	Reinforcing (Vertical)	Reinforcing (Spiral)
MS-19	50'-0"	691.63	641.63	20-V123	SP103
MS-20	50'-0"	691.67	641.67	20-V123	SP103
MS-21	50'-0"	691.71	641.71	20-V123	SP103
MS-22	50'-0"	691.74	641.74	20-V123	SP103
MS-23	50'-0"	691.78	641.78	20-V123	SP103
MS-24	50'-0"	691.82	641.82	20-V123	SP103
MS-25	50'-2"	691.87	641.70	20-V123	SP103
MS-26	50'-2"	691.91	641.74	20-V123	SP103
MS-27	50'-2"	691.95	641.78	20-V123	SP103
MS-28	50'-11"	692.05	641.13	20-V124	SP104
MS-29	50'-11"	692.13	641.22	20-V124	SP104
MS-30	50'-11"	692.22	641.30	20-V124	SP104
MS-31	50'-11"	692.31	641.39	20-V124	SP104
MS-32	50'-11"	692.39	641.48	20-V124	SP104
MS-33	50'-11"	692.48	641.57	20-V124	SP104
MS-34	50'-11"	692.57	641.65	20-V124	SP104
MS-35	50'-11"	692.66	641.74	20-V124	SP104

TYLIN INTERNATIONAL

DESIGNED	- MB
CHECKED	- AD
DRAWN	- CM
CHECKED	- AD

LAP SPLICES

Bar	Lap
#4	1'-8"
#5	2'-2"
#6	2'-7"
#8	4'-6"

NOTES

- B.F. - denotes Back Face.
- E.F. - denotes Each Face.
- F.F. - denotes Front Face.
- Work this Sheet with Sheets 2 thru 9 of 17.
- Drilled Shaft spacing measured along front face of wall.
- For Bill of Material, see Sheet 7.
- For Section B-B and C-C, see Sheet 9.

WALL M
PLAN AND ELEVATION
STA 212+94.08 TO STA 213+73.11

FAP 346 (U.S. ROUTE 41 - SKOKIE
HIGHWAY) OVER ILLINOIS ROUTE 132
SECTION 125X-HB-(1&2)R-1
LAKE COUNTY
S.N. 049-W034