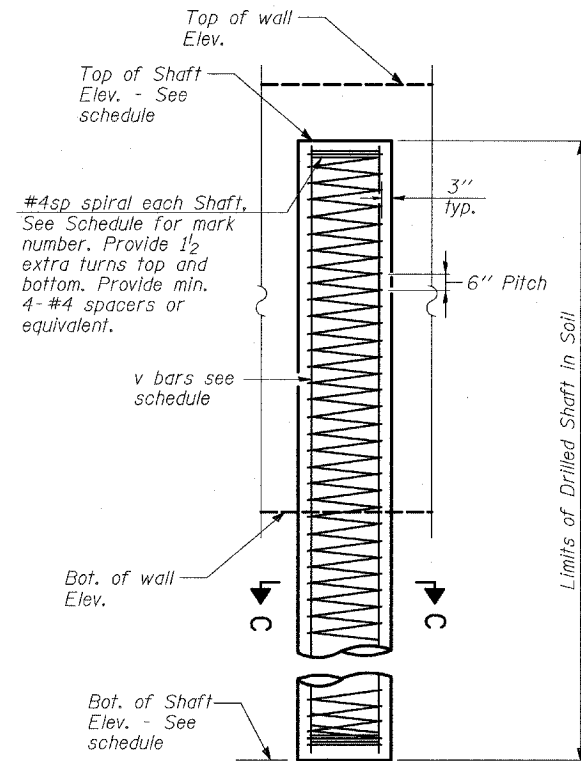
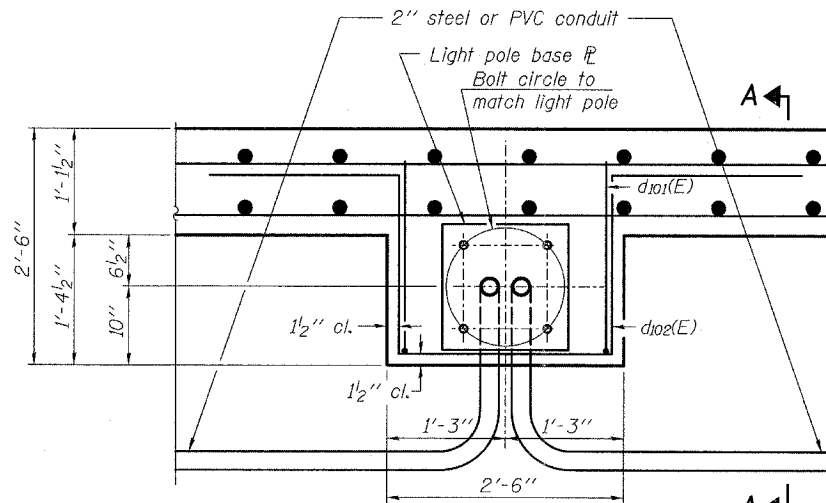


STATE OF ILLINOIS
DEPARTMENT OF TRANSPORTATION

ROUTE NO.	SECTION	COUNTY	TOTAL SHEETS	SHEET NO.	SHEET NO. - 7
346	*	LAKE	469	238	17 - SHEETS
FED. ROAD DIST. NO.		ILLINOIS	FED. AID PROJECT		
* 125X-HB-(1&2) R-1		CONTRACT # 60826			

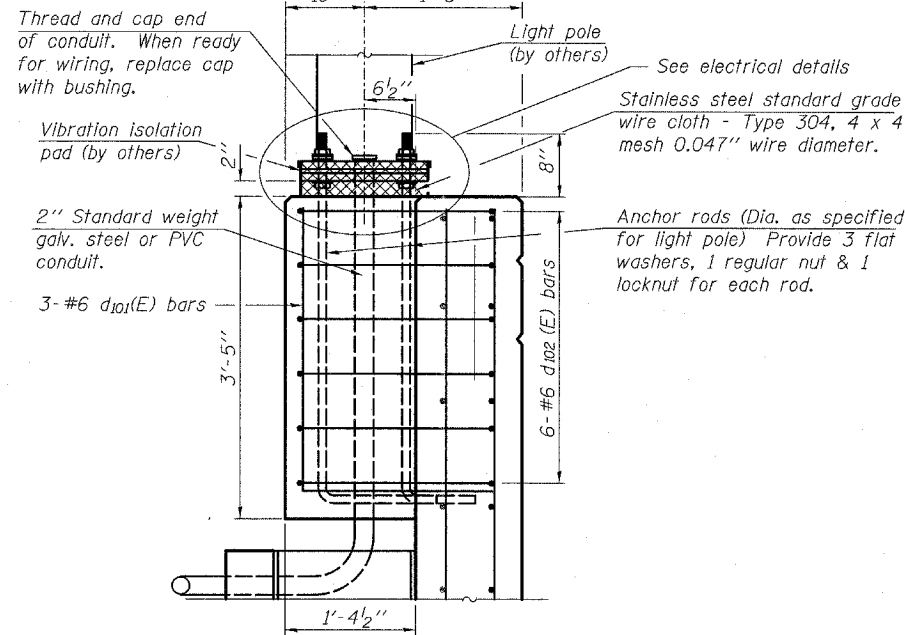


DRILLED SHAFT ELEVATION

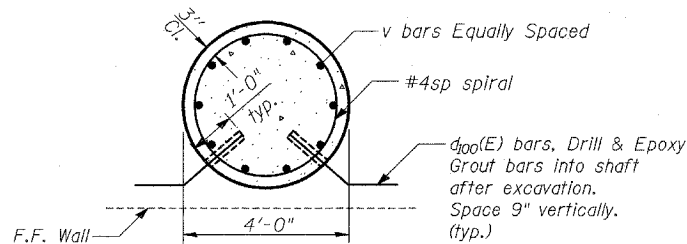


PLAN

Note:
Cost of anchor rods and conduit is included with Concrete Structures.

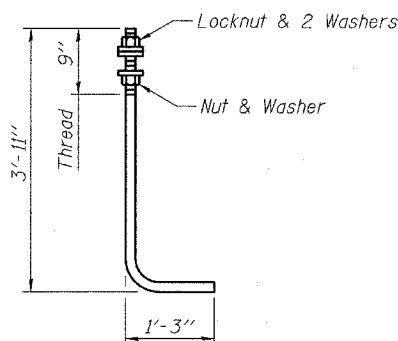


SECTION A-A



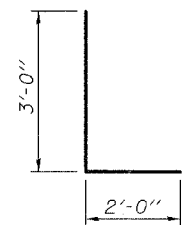
SECTION D-D

Drill & Epoxy Grout $d_{100}(E)$ bars according to Article 584 of the Standard Specifications. The cost shall be included with "Reinforcement Bars, Epoxy Coated".

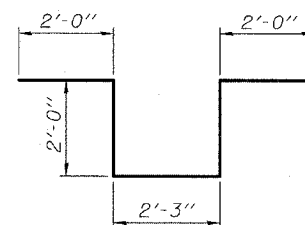


ANCHOR ROD

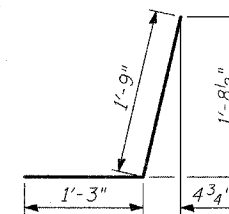
Diameter as specified for light poles.
(ASTM F 1554 Grade 105)



BAR $d_{101}(E)$



BAR $d_{102}(E)$



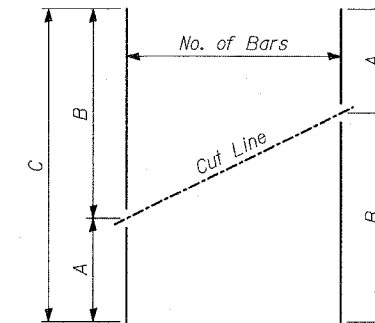
BAR $d_{100}(E)$

LAP SPLICES

Bar	Lap
#4	1'-8"
#5	2'-2"
#6	2'-7"
#8	4'-6"

SERIES OF BAR CUTTING DIAGRAM

See table for dimensions.
Order Bars Full Length, Cut as Shown Normal to Bar Axis and Use Remainder of Bars in Opposite Face.



BAR LIST AND BILL OF MATERIAL

Bar	No. of Sets Required	No. of Bars Per Set	A	B	C
V ₁₀₀ (E)	1	31	4'-7"	5'-6"	10'-1"
V ₁₀₁ (E)	1	31	5'-6"	6'-7"	12'-1"
V ₁₀₂ (E)	1	31	6'-7"	7'-9"	14'-4"
V ₁₀₃ (E)	1	31	7'-9"	9'-1"	16'-10"
V ₁₀₄ (E)	1	31	9'-1"	10'-6"	19'-7"
V ₁₀₅ (E)	1	31	10'-6"	11'-10"	22'-4"
V ₁₀₆ (E)	1	31	11'-10"	13'-1"	24'-11"
V ₁₀₇ (E)	1	31	13'-1"	14'-3"	27'-4"
V ₁₀₈ (E)	1	31	14'-3"	15'-6"	29'-9"
V ₁₀₉ (E)	1	31	15'-6"	16'-3"	31'-9"
V ₁₁₀ (E)	1	31	16'-3"	17'-0"	33'-3"
V ₁₁₁ (E)	1	31	17'-0"	17'-9"	34'-9"
V ₁₁₃ (E)	1	12	17'-11"	13'-9"	31'-8"
V ₁₁₄ (E)	1	31	13'-9"	2'-9"	16'-6"

BAR LIST AND BILL OF MATERIAL

Bar	Number	Size	Length	Shape
d ₁₀₀ (E)	4,950	#5	3'-0"	J
d ₁₀₁ (E)	3	#6	5'-0"	L
d ₁₀₂ (E)	6	#6	10'-3"	U
h ₁₀₀ (E)	274	#5	32'-2"	—
h ₁₀₁ (E)	116	#5	29'-8"	—
h ₁₀₂ (E)	38	#5	17'-6"	—
h ₁₀₃ (E)	38	#5	15'-1"	—
V ₁₀₀ (E)	31	#4	10'-1"	—
V ₁₀₁ (E)	31	#4	12'-1"	—
V ₁₀₂ (E)	31	#4	14'-4"	—
V ₁₀₃ (E)	31	#4	16'-10"	—
V ₁₀₄ (E)	31	#4	19'-7"	—
V ₁₀₅ (E)	31	#4	22'-4"	—
V ₁₀₆ (E)	31	#4	24'-11"	—
V ₁₀₇ (E)	31	#4	27'-4"	—
V ₁₀₈ (E)	31	#4	29'-9"	—
V ₁₀₉ (E)	31	#4	31'-9"	—
V ₁₁₀ (E)	31	#4	33'-3"	—
V ₁₁₁ (E)	31	#4	34'-9"	—
V ₁₁₂ (E)	50	#4	17'-10"	—
V ₁₁₃ (E)	12	#4	31'-8"	—
V ₁₁₄ (E)	31	#4	16'-6"	—
** SP ₁₀₀	6	#4	46'-0"	
** SP ₁₀₁	6	#4	46'-8"	
** SP ₁₀₂	6	#4	47'-2"	
** SP ₁₀₃	9	#4	49'-8"	
** SP ₁₀₄	8	#4	50'-5"	
V ₁₂₀	120	#10	46'-0"	—
V ₁₂₁	120	#10	46'-8"	—
V ₁₂₂	120	#10	47'-2"	—
V ₁₂₃	180	#10	49'-8"	—
V ₁₂₄	160	#10	50'-5"	—
Reinforcement Bars, Epoxy Coated	Pound		36,560	
Concrete Structures	CU YD		233	
Anti-Graffiti Coating	SQ FT		5,415	
Furnishing Soldier Piles (W Section)	FOOT		1,240	
Drilling and Setting Soldier Piles (in Soil)	CU FT		8,459	
Drilled Shaft in Soil	CU YD		795	
Reinforcement Bars	Pound		177,650	

Minimum Lap for Spirals = 1/2 Turns
** Length is Height of Spiral.

**WALL M
REINFORCEMENT DETAILS**

FAP 346 (U.S. ROUTE 41 - SKOKIE HIGHWAY) OVER ILLINOIS ROUTE 132
SECTION 125X-HB-(1&2)R-1
LAKE COUNTY
S.N. 049-W034

TYLIN INTERNATIONAL

DESIGNED	- MB
CHECKED	- AD
DRAWN	- CM
CHECKED	- AD