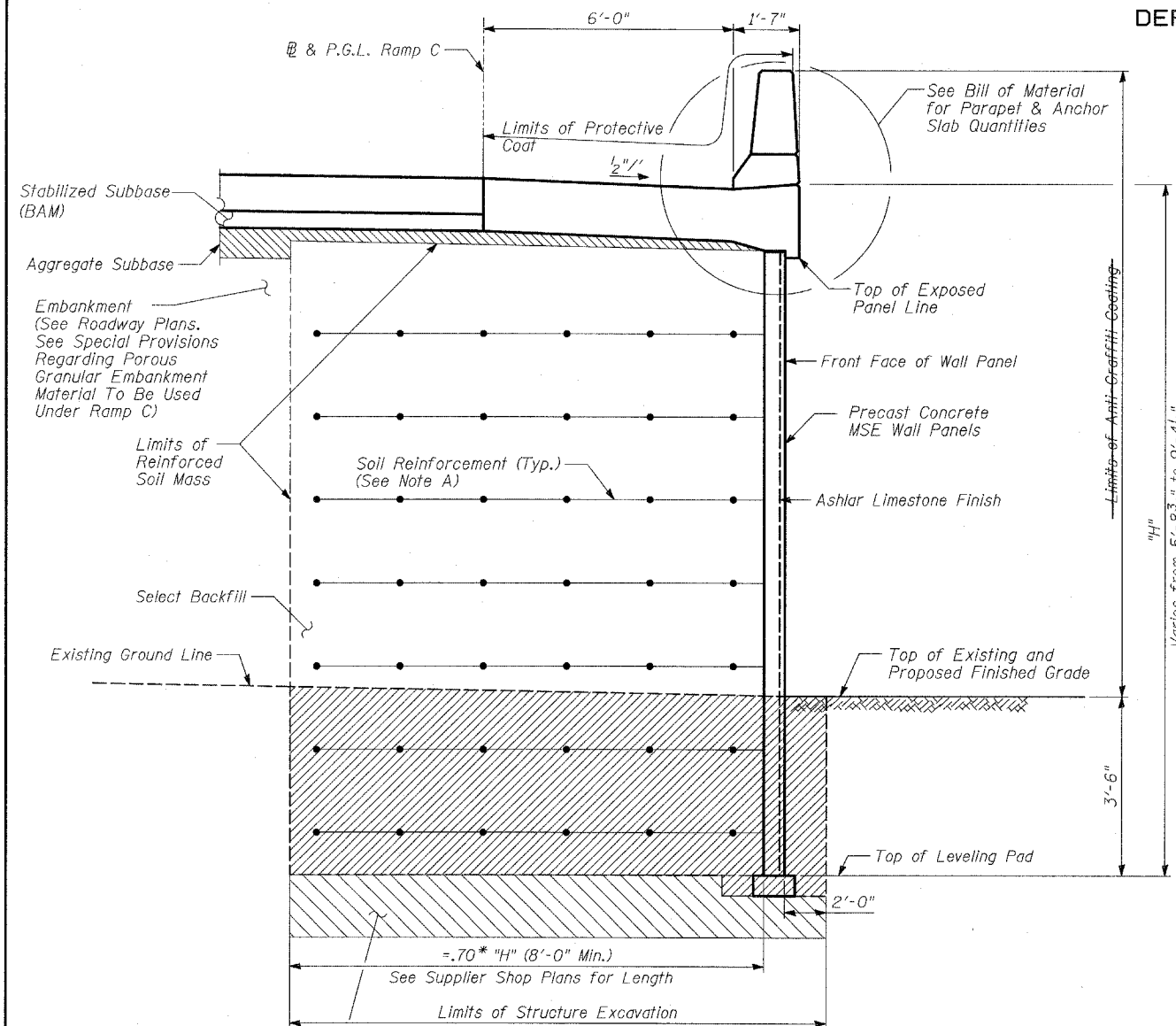


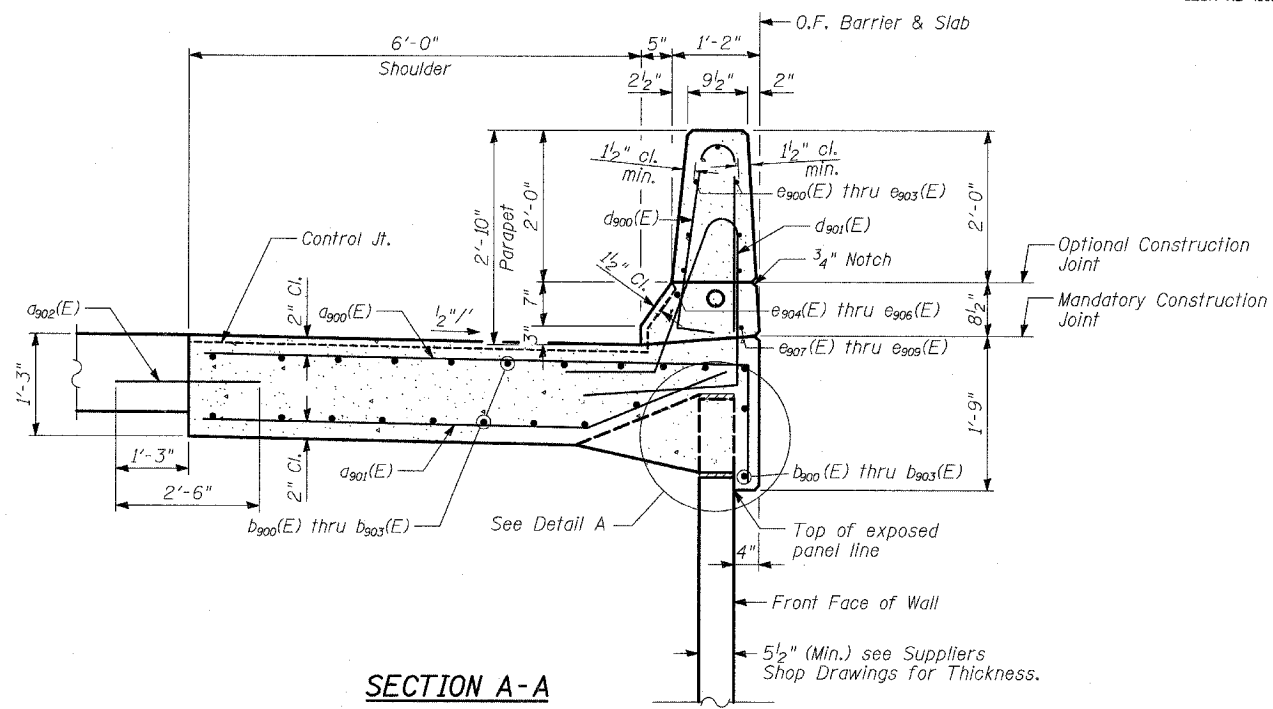
STATE OF ILLINOIS
DEPARTMENT OF TRANSPORTATION

ROUTE NO.	SECTION	COUNTY	TOTAL SHEETS	SHEET NO.
346	*	LAKE	469	306
SHEET NO. - 8				
15 SHEETS				
FED. ROAD DIST. NO.		ILLINOIS	FED. AID PROJECT-	
* 125X-HB-(1&2) R-1		CONTRACT * 60826		



TYPICAL CROSS SECTION

Note A: The M.S.E. Wall Suppliers internal stability design shall account for the anchorage slab's bearing pressure surcharge of 1.0 ksf and a horizontal sliding force of 0.5 k/ft of wall.



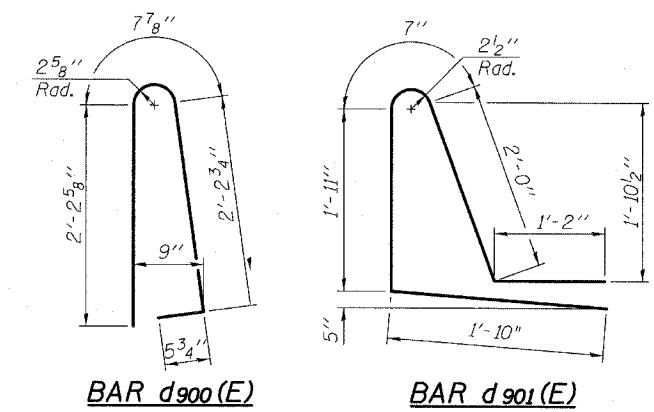
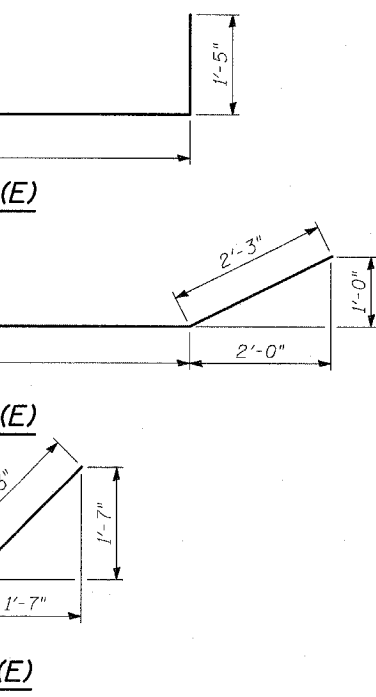
SECTION A-A

NOTES:

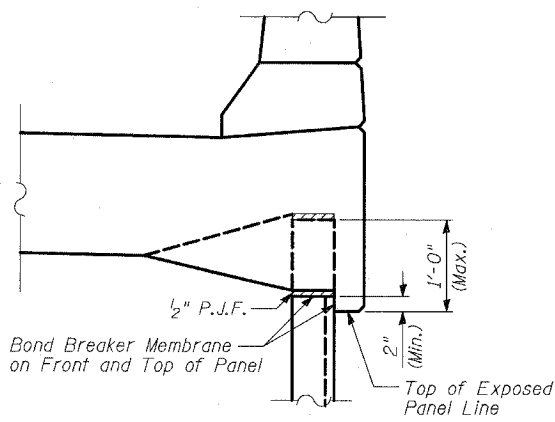
Surface Treatment of MSE Wall Panels shall be Ashlar Limestone Finish Pattern. Maximum relief = 1/2". Cost of Surface Treatment shall be included in the cost of "Mechanically Stabilized Earth Retaining Wall."

BILL OF MATERIAL

Bar No.	Size	Length	Shape
a900(E)	735 #6	8'-8"	┌
a901(E)	735 #6	9'-6"	└
a902(E)	735 #6	2'-6"	—
a903(E)	40 #6	5'-6"	—
a904(E)	8 #6	4'-6"	└
b900(E)	323 #4	31'-2"	—
b901(E)	57 #4	30'-8"	—
b902(E)	57 #4	27'-5"	—
b903(E)	38 #4	29'-6"	—
d900(E)	803 #5	5'-7"	┌
d901(E)	803 #5	7'-5"	└
d902(E)	15 #6	4'-5"	—
d903(E)	25 #6	8'-11"	└
e900(E)	308 #4	14'-9"	—
e901(E)	14 #4	14'-0"	—
e902(E)	7 #4	18'-8"	—
e903(E)	14 #4	13'-5"	—
e904(E)	18 #8	32'-11"	—
e905(E)	3 #8	29'-3"	—
e906(E)	4 #8	32'-1"	—
e907(E)	18 #4	31'-0"	—
e908(E)	3 #4	27'-4"	—
e909(E)	4 #4	30'-8"	—
Concrete Superstructure		CU YD	353
Reinforcement Bars, Epoxy Coated		POUND	50,260



Limits of Removal and Disposal of Unsuitable Material. Backfill with Porous Granular Embankment. See Sheets 1 and 2 for limits.



DETAIL A

REVISIONS	
NAME	DATE
ANNA ZYSMAN	6-17-08

WALL N
ANCHORAGE SLAB AND PARAPET
SECTIONS AND BAR LIST

FAP 346 (U.S. ROUTE 41 - SKOKIE HIGHWAY) OVER ILLINOIS ROUTE 132
SECTION 125X-HB-(1&2)R-1
LAKE COUNTY
S.N. 049-W035

TYLIN INTERNATIONAL

DESIGNED	- SP
CHECKED	- AD
DRAWN	- MAF
CHECKED	- AD