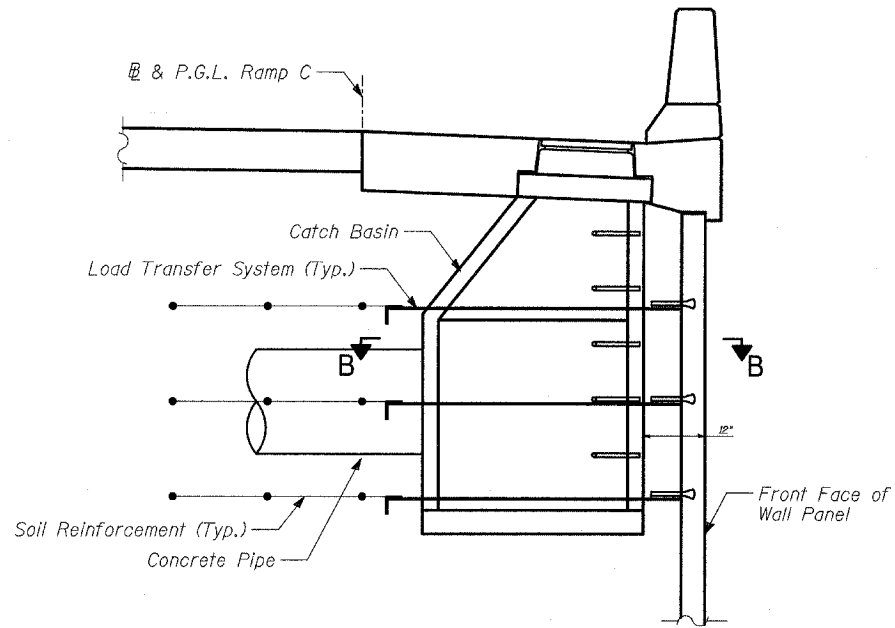
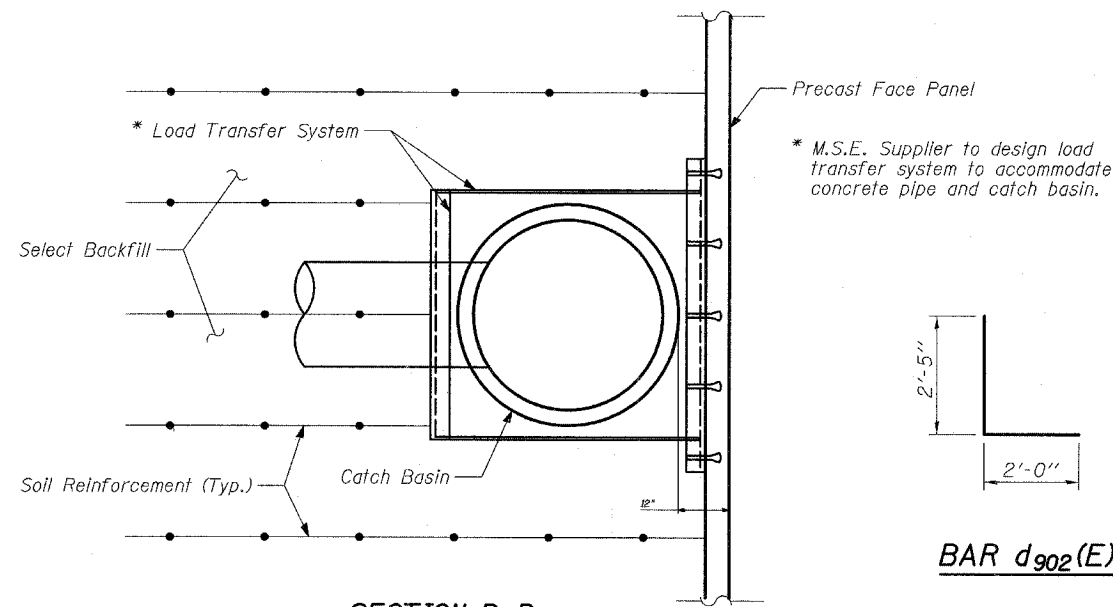


STATE OF ILLINOIS
DEPARTMENT OF TRANSPORTATION

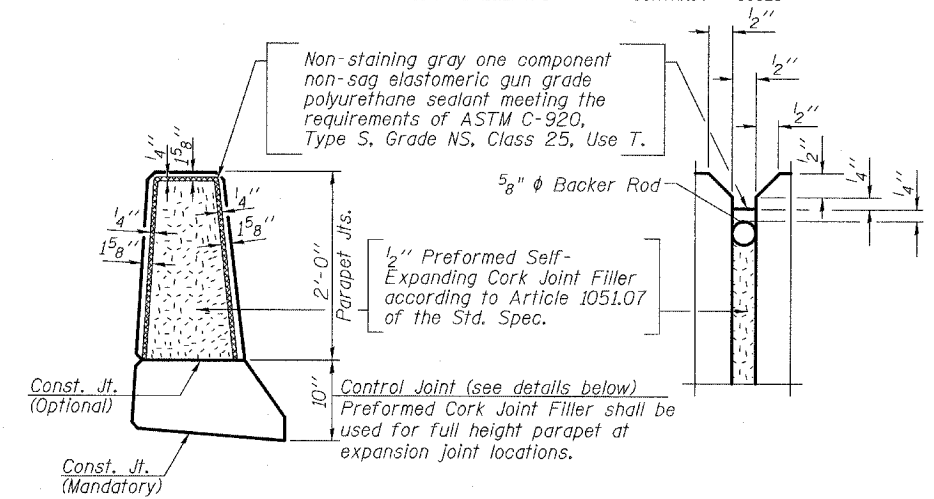
ROUTE NO.	SECTION	COUNTY	TOTAL SHEETS	SHEET NO.	SHEET NO. - 9
346	*	LAKE	469	307	15 SHEETS
FED. ROAD DIST. NO.		ILLINOIS	FED. AID PROJECT		
* 125X-HB-(1&2) R-1		CONTRACT # 60826			



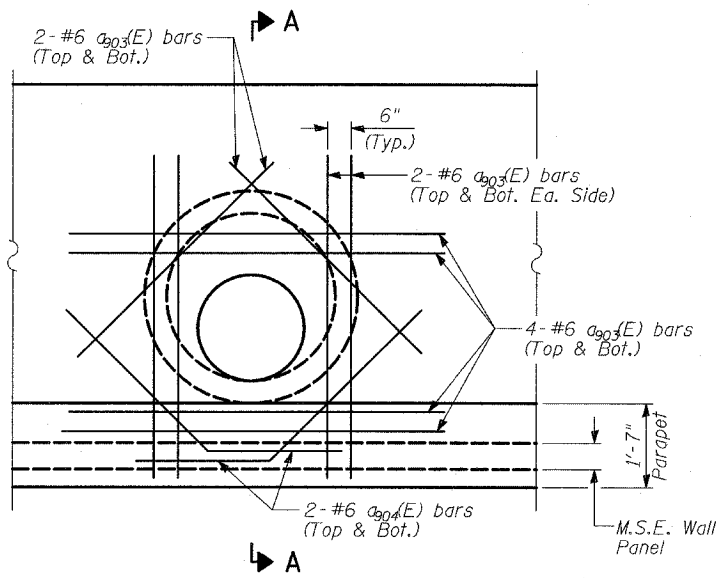
SECTION A-A



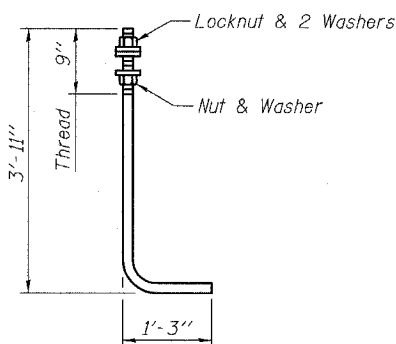
SECTION B-B



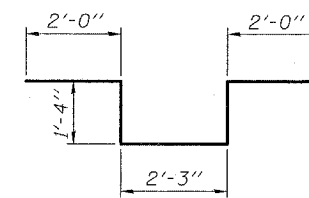
PARAPET JOINT DETAILS
(Cost Included with Concrete Structures)



PLAN AT CATCH BASIN



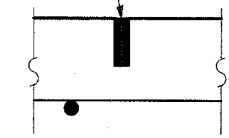
ANCHOR ROD
Diameter as specified for light poles.
(ASTM F 1554 Grade 105)



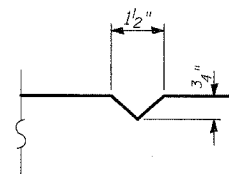
BAR d902(E)

BAR d903(E)

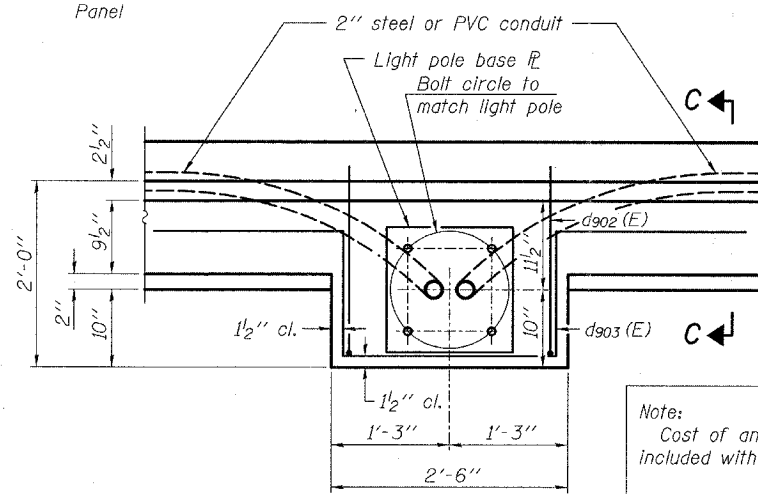
1/4" wide x 1/2" deep sawed joint filled with hot poured sealant in accordance with Article 1050 of Standard Specifications.



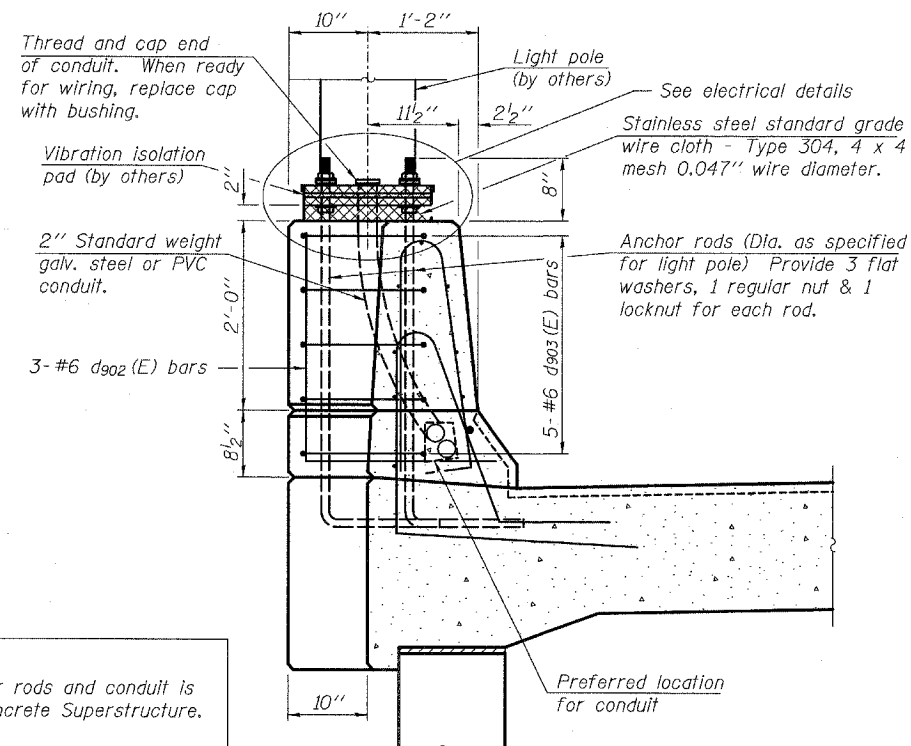
SAWED CONTRACTION JOINT DETAIL - SLAB
(Cost Included with Concrete Structures)



CONTROL JOINT DETAIL-PARAPET



PLAN



SECTION C-C

TYLIN INTERNATIONAL

DESIGNED	- SP
CHECKED	- AD
DRAWN	- MAF
CHECKED	- AD

Note:
Cost of anchor rods and conduit is included with Concrete Superstructure.

ANCHORAGE SLAB AND PARAPET
DETAILS

FAP 346 (U.S. ROUTE 41 - SKOKIE
HIGHWAY) OVER ILLINOIS ROUTE 132
SECTION 125X-HB-(1&2)R-1
LAKE COUNTY
S.N. 049-W035