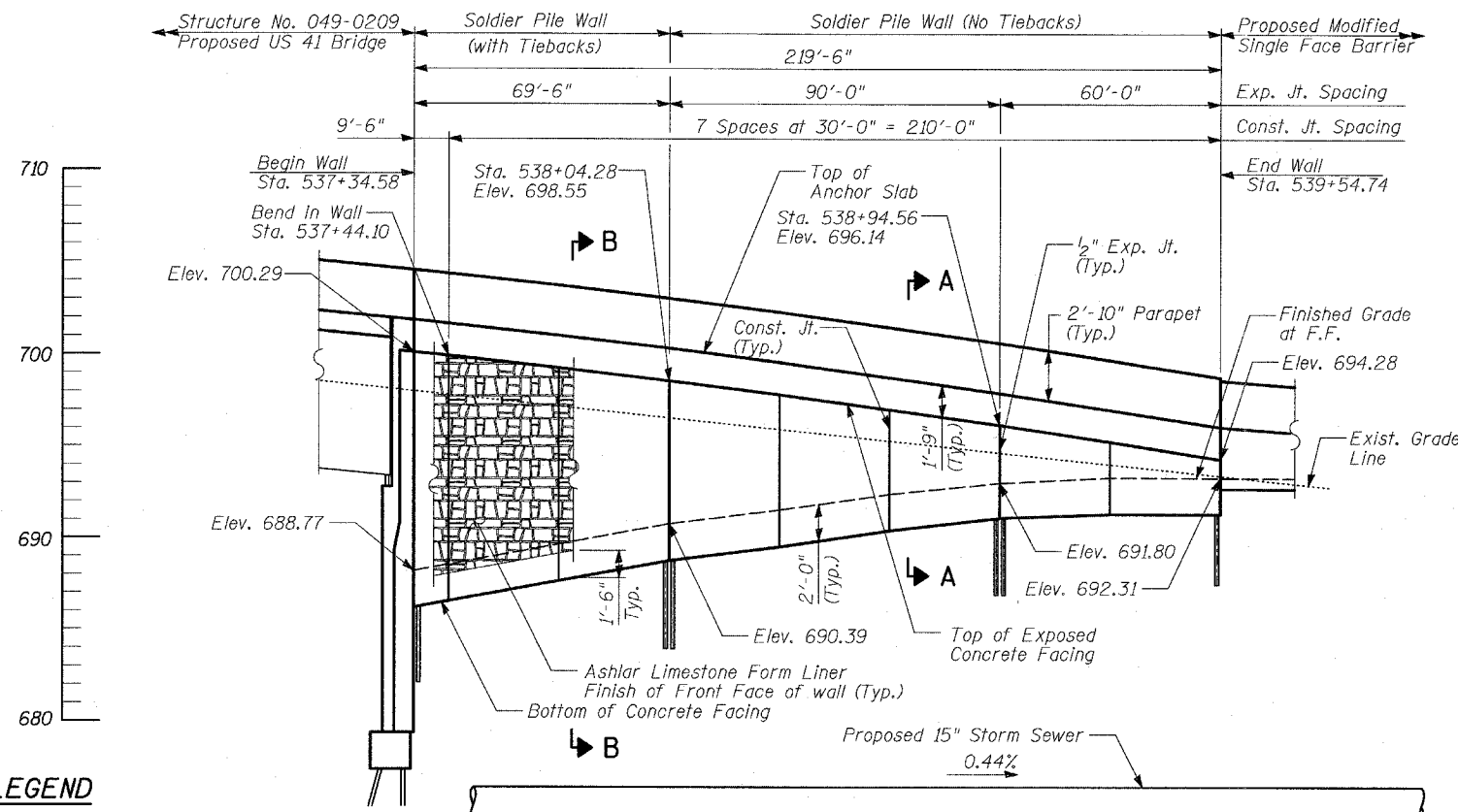


Benchmark: BM #6 - Square cut in base of L.P. at N.E. corner of IL Route 132 and Magnolia (Speedway) 45.14' LT, Sta. 32+13.24 (IL 132 E.B. @), Elev. 696.47.

Existing Structure: None.

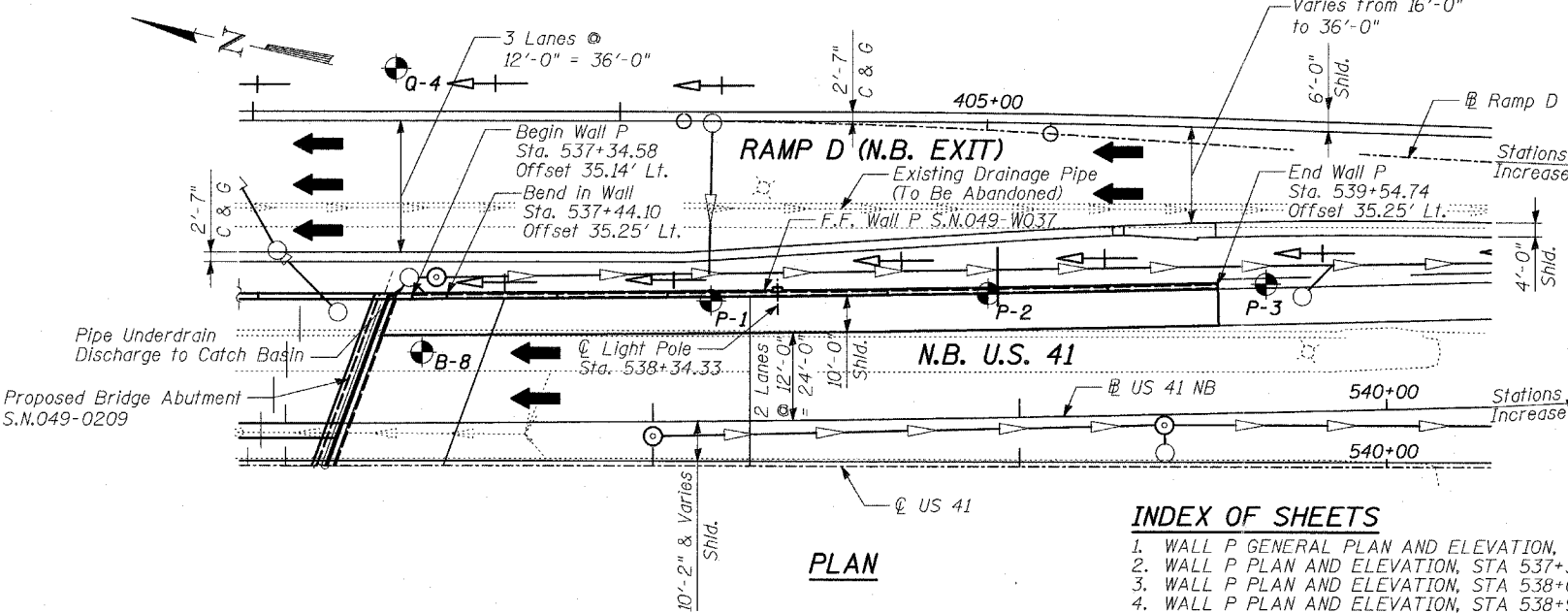
STATE OF ILLINOIS
DEPARTMENT OF TRANSPORTATION

ROUTE NO.	SECTION	COUNTY	TOTAL SHEETS	SHEET NO.
346	*	LAKE	469	16
SHEETS				
FED. ROAD DIST. NO.	ILLINOIS	FED. AID PROJECT-		
* 125X-HB-(1&2) R-1			CONTRACT # 60826	
TOTAL BILL OF MATERIAL				



- LEGEND**
- ⊙ - Manhole
 - - Catch Basin
 - ⊕ - Soil Boring
 - - Prop. Storm Sewer
 - - Exist. Drain Pipe
 - ⊕ - Proposed Drainage Swale

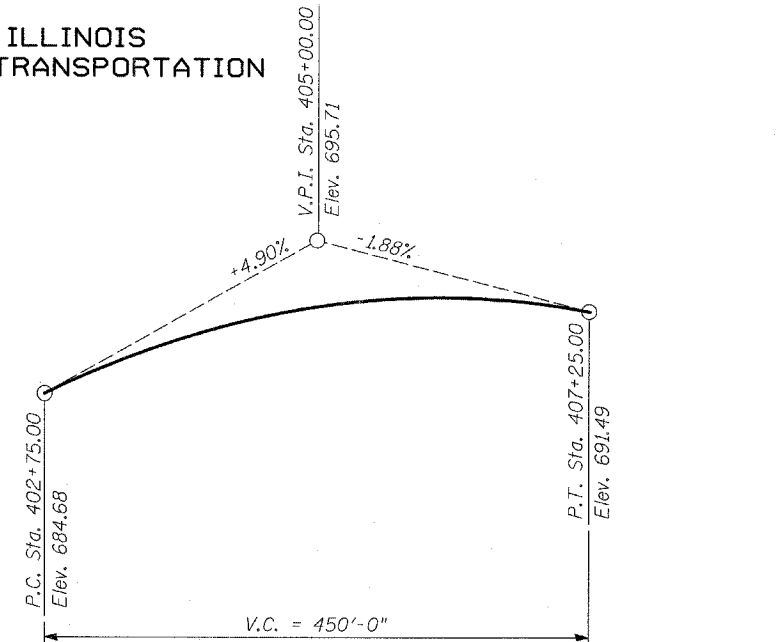
ELEVATION
(Looking at B.F.)



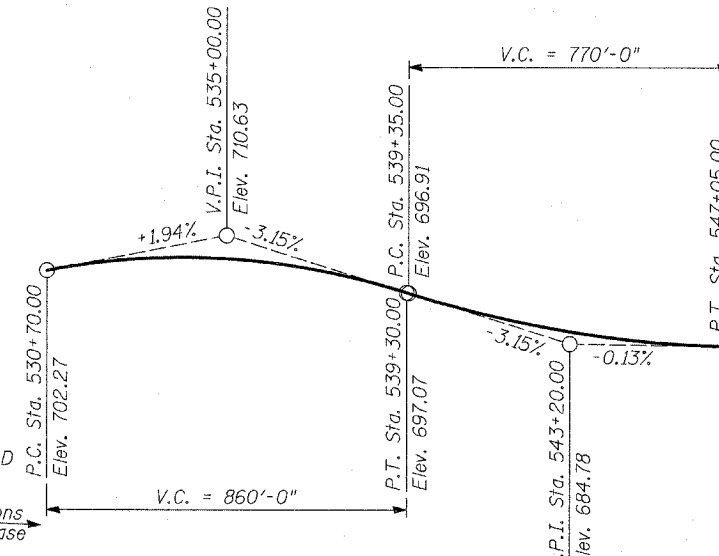
PLAN

INDEX OF SHEETS

1. WALL P GENERAL PLAN AND ELEVATION, STA 537+34.58 TO STA 539+54.74
2. WALL P PLAN AND ELEVATION, STA 537+34.58 TO 538+04.28
3. WALL P PLAN AND ELEVATION, STA 538+04.28 TO 538+94.56
4. WALL P PLAN AND ELEVATION, STA 538+94.56 TO 539+54.74
5. WALL P SECTIONS AND DETAILS (1 OF 2)
6. WALL P SECTIONS AND DETAILS (2 OF 2)
7. WALL P TIE BACK AND DEADMAN DETAILS
8. WALL P ANCHORAGE SLAB AND PARAPET (1 OF 2)
9. WALL P ANCHORAGE SLAB AND PARAPET (2 OF 2)
10. WALL P MISCELLANEOUS DETAILS
11. WALL P RUSTICATION DETAILS
12. BORING LOG B-8 (1 of 2)
13. BORING LOG B-8 (2 of 2)
14. BORING LOG P-1
15. BORING LOG P-2
16. BORING LOG P-3



PROFILE GRADE RAMP D



PROFILE GRADE N.B. U.S. 41

DESIGN SPECIFICATIONS

2002 AASHTO Standard Specifications For Highway Bridges

DESIGN STRESSES

FIELD UNITS

- $f'_c = 3,500$ psi
- $f_y = 60,000$ psi (reinforcement)
- $f'_s = 36,000$ psi (structural steel M270 Grade 36)
- $f'_s = 150,000$ psi (tie rods)

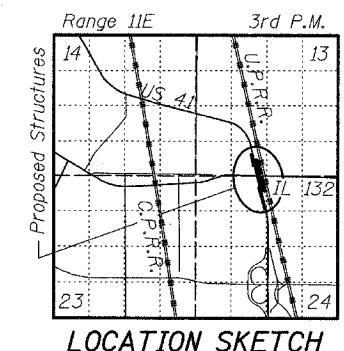
NOTES:

1. Wall stations and offsets are given to the front face of the concrete facing, and are measured from NB US 41 Baseline.
2. Existing utilities in conflict with soldier pile wall construction shall be abandoned or relocated according to direction given in roadway plans.
3. Reinforcement bars shall conform to the requirements of ASTM A 706 Gr. 60 (IL Modified). See Special Provisions.
4. Reinforcement bars designated (E) shall be epoxy coated.
5. All exposed concrete edges shall be chamfered $\frac{3}{4}$ " except as noted.
6. Slipforming of the parapet is not allowed.
7. All construction joints shall be bonded.
8. Soldier Pile Wall design can accommodate disturbance in front of wall for installation of proposed storm sewer. Lagging pay limits are to proposed bottom of C.I.P. concrete facing.

**N.B. U.S. 41
HORIZONTAL CURVE DATA**

- Prop. Curve M41NB-3
- PI Sta. 538+72.51
- $\Delta = 1^\circ 52' 52''$ (L.T)
- $D = 0^\circ 29' 56''$
- $T = 188.53'$
- $R = 11,483.00'$
- $L = 377.03'$
- $E = 1.55'$
- PC Sta. 536+83.97
- PT Sta. 540+61.01

APPROVED
FOR STRUCTURAL ADEQUACY ONLY
Ralph E. Anderson
ENGINEER OF BRIDGES AND STRUCTURES



LOCATION SKETCH

**WALL P
GENERAL PLAN
STA 537+34.58 TO STA 539+54.74**

FAP 346 (U.S. ROUTE 41 - SKOKIE HIGHWAY) OVER ILLINOIS ROUTE 132 SECTION 125X-HB-(1&2)R-1 LAKE COUNTY S.N. 049-W037

TYLIN INTERNATIONAL

DESIGNED	- MB
CHECKED	- CM/AD
DRAWN	- DE
CHECKED	- CM/AD



Signed *S. Pantazis*
Spiros Pantazis, S.E. II, Lic. No. 081-006448
Expires 11-30-2008. For drawings 1 thru 16 of 16
Date 5/14/08