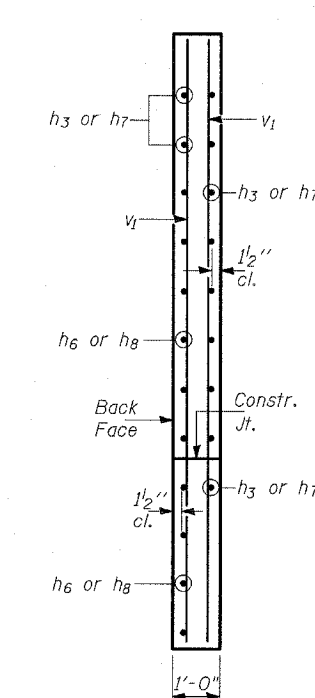
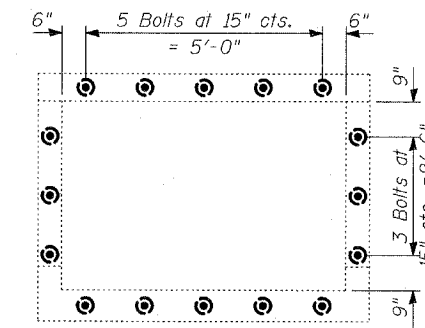
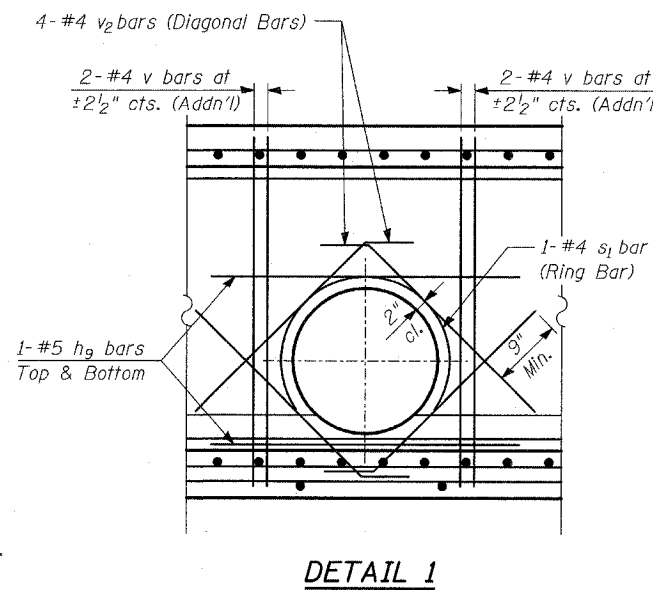
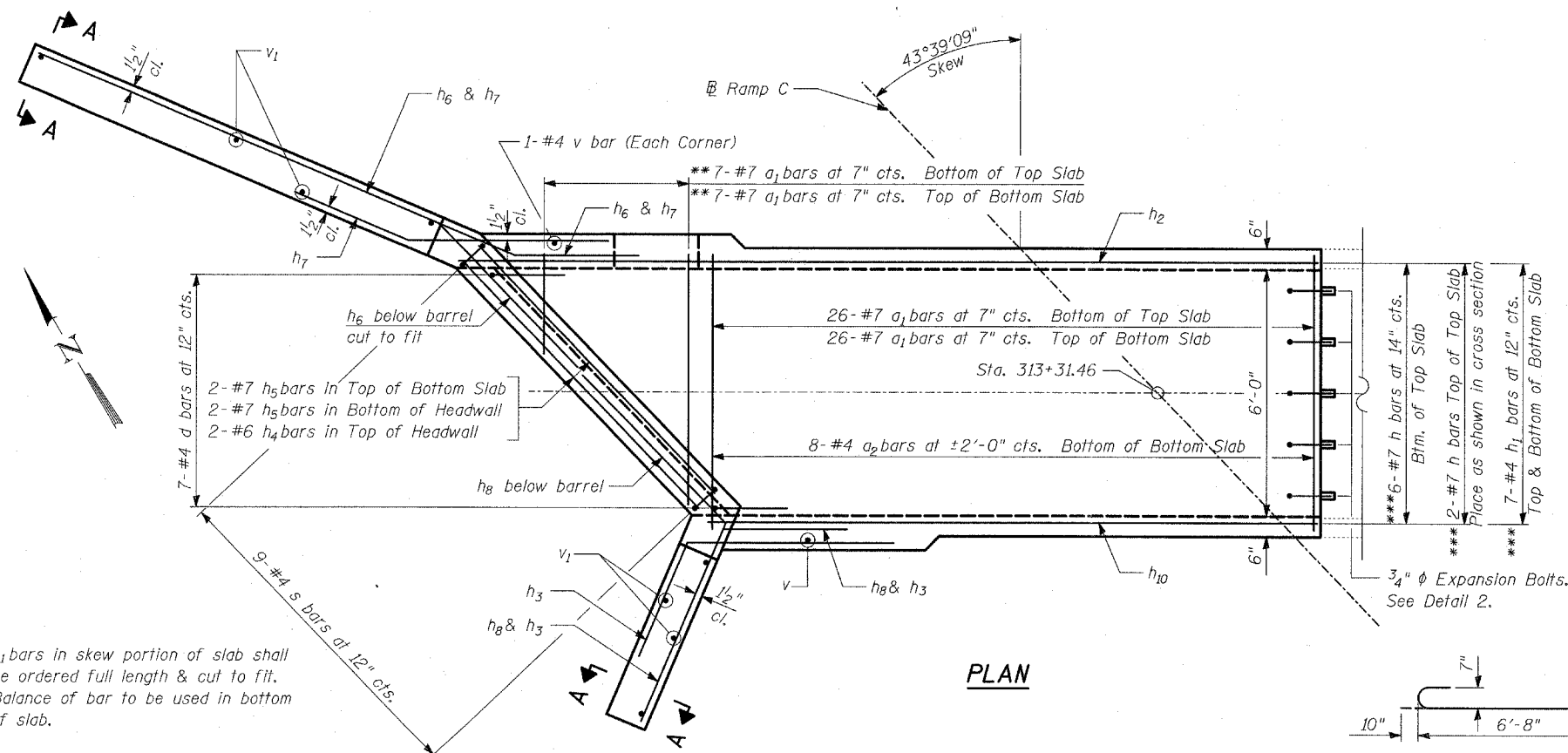
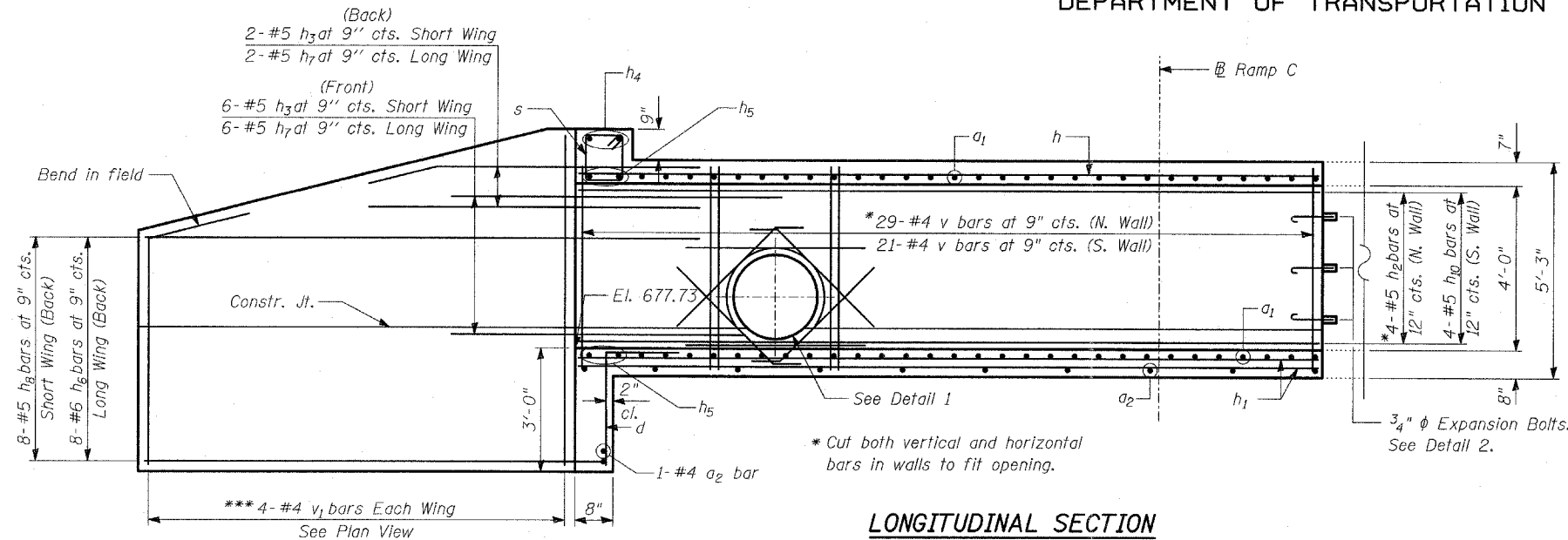


STATE OF ILLINOIS
DEPARTMENT OF TRANSPORTATION

ROUTE NO.	SECTION	COUNTY	TOTAL SHEETS	SHEET NO.	SHEET NO. - 2 2 SHEETS
346		LAKE	469	365	
FED. ROAD DIST. NO.		ILLINOIS	FED. AID PROJECT -		
		125X-HB-(1&2) R-1		CONTRACT # 60826	

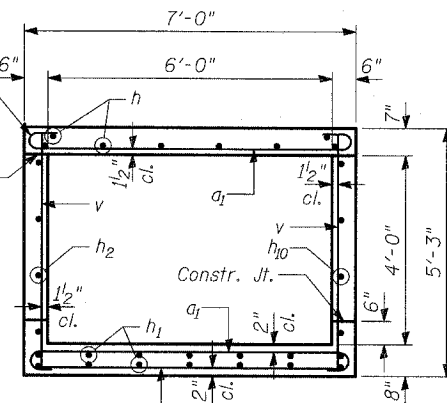


BILL OF MATERIAL

Bar	Number	Size	Length	Shape
a1	59	#7	8'-4"	U
a2	9	#4	6'-8"	U
d	7	#4	4'-6"	L
h	8	#7	20'-8"	U
h1	14	#4	20'-8"	U
h2	4	#5	20'-8"	U
h3	8	#5	8'-0"	U
h4	2	#6	8'-4"	U
h5	4	#7	8'-4"	U
h6	8	#6	16'-1"	U
h7	8	#5	8'-0"	U
h8	8	#5	8'-4"	U
h9	2	#5	4'-4"	U
h10	4	#5	14'-7"	U
s	9	#4	4'-5"	U
s1	1	#4	5'-2"	U
v	56	#4	4'-11"	U
v1	8	#4	8'-1"	U
v2	4	#4	4'-0"	U
Reinforcement Bars			POUND	2,520
Concrete Box Culvert			CU YD	15
3/4" φ Expansion Bolts			EACH	16

NOTES:

Expansion bolts shall be 3/4" φ hooked bolts. Hooked bolts shall extend a minimum of 9" into new concrete.



**BOX CULVERT EXTENSION
STA. 313+31.46
REINFORCEMENT DETAILS**

FAP 346 (U.S. ROUTE 41 - SKOKIE
HIGHWAY) OVER ILLINOIS ROUTE 132
SECTION 125X-HB-(1&2)R-1
LAKE COUNTY

TYLIN INTERNATIONAL

DESIGNED	- AD, MAF
CHECKED	- AD
DRAWN	- MAF
CHECKED	- AD

