

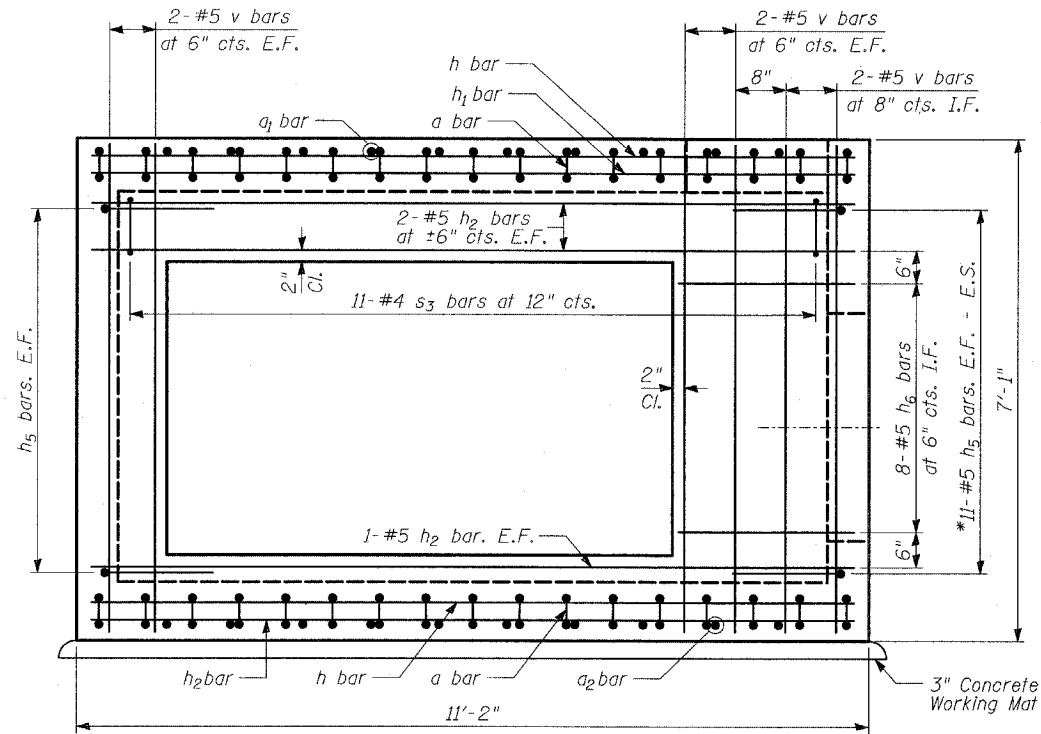
STATE OF ILLINOIS
DEPARTMENT OF TRANSPORTATION

ROUTE NO.	SECTION	COUNTY	12176 SHEETS	SHEET NO.
346	*	LAKE	469	371
FED. ROAD DIST. NO.		ILLINOIS	FED. AID PROJECT	
* 125X-HB-(1&2) R-1		CONTRACT # 60826		

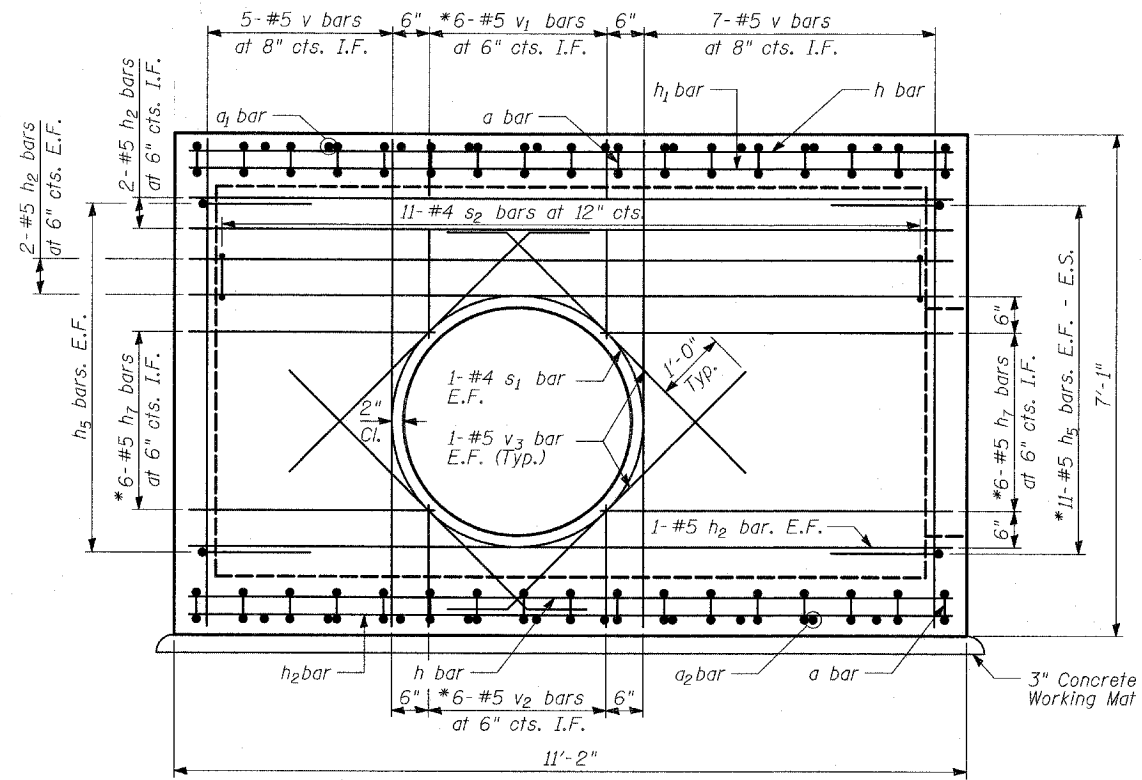
SHEET NO. - 3
3 SHEETS

BILL OF MATERIAL

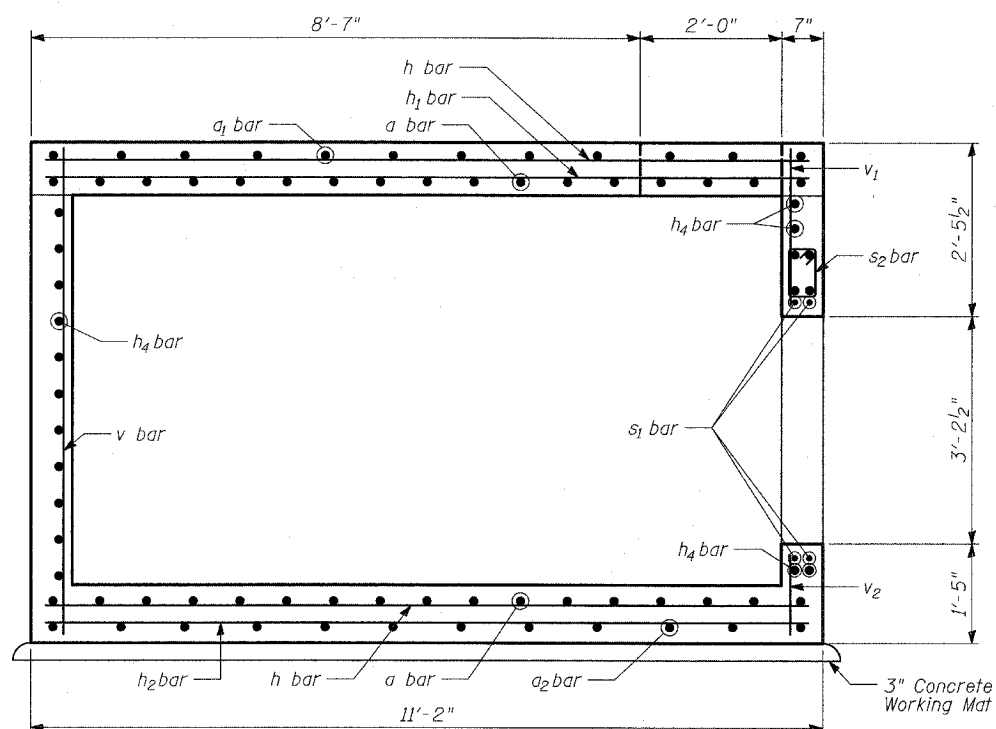
Bar	No.	Size	Length	Shape
a	34	#8	12'-8"	U
a ₁	12	#8	6'-11"	—
a ₂	12	#4	6'-11"	—
a ₃	8	#5	4'-4"	—
h	22	#8	10'-11"	—
h ₁	8	#4	10'-11"	—
h ₂	22	#5	10'-11"	—
h ₃	12	#5	2'-2"	—
h ₄	19	#5	6'-11"	—
h ₅	88	#5	3'-0"	L
h ₆	8	#5	2'-6"	—
h ₇	12	#5	5'-0"	—
s	2	#4	12'-10"	○
s ₁	4	#4	9'-0"	○
s ₂	18	#4	2'-6"	□
s ₃	11	#4	2'-10"	□
v	38	#5	6'-10"	—
v ₁	12	#5	2'-8"	—
v ₂	12	#5	1'-7"	—
v ₃	16	#5	5'-11"	—
Reinforcement Bars		POUND		3,460
Concrete Structures		CU YD		8



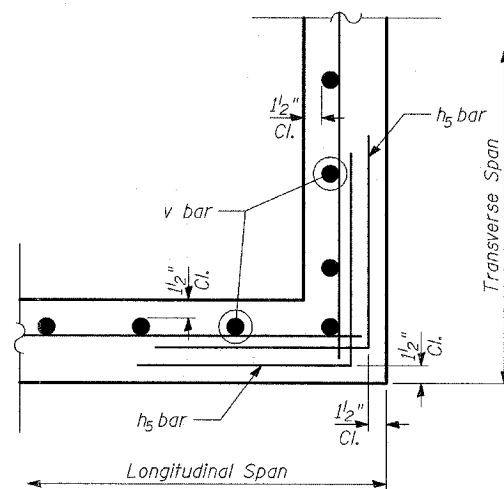
SECTION D-D



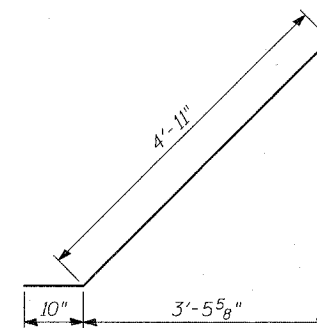
SECTION F-F



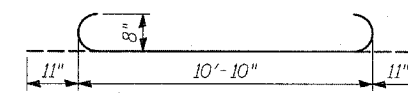
SECTION E-E



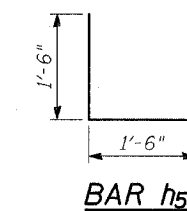
CORNER BAR DETAIL



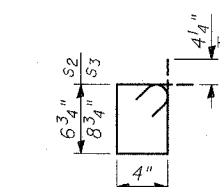
BAR v₃



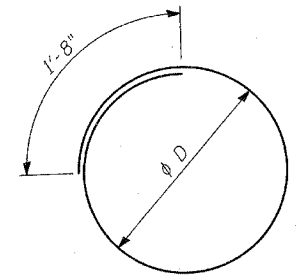
BAR a



BAR h₅



BAR s₂ & s₃



BARS s & s₁

Bar	φ D
s	2'-4"
s ₁	3'-6 1/2"

NOTES:

- All dimensions and elevations shall be field verified prior to construction.
- Concrete pipe sizes shall be coordinated with openings provided into junction chamber before pouring concrete.
- Manhole Frame, Ladder Rungs, and any inserts installation shall be coordinated with Roadway Plans.
- Concrete cover for reinforcement steel to be 2" unless otherwise noted.
- All concrete edges shall be chamfered 1 inch.
- All lap splices marked on the drawings are minimum.
- Concrete Compressive Strength $f_c' = 3,500$ psi.
- Steel Yield Strength = 60,000 psi.
- Work this Sheet with Sheets 1 and 3 of 3.

**JUNCTION CHAMBER 52
DETAILS (2 OF 2)**

FAP 346 (U.S. ROUTE 41 - SKOKIE
HIGHWAY) OVER ILLINOIS ROUTE 132
SECTION 125X-HB-(1&2)R-1
LAKE COUNTY
S.N.

TYLIN INTERNATIONAL

DESIGNED	- MAF
CHECKED	- PL
DRAWN	- MAF
CHECKED	- PL

- * Cut bars to fit in field.
- E.F. - denotes Each Face
- E.S. - denotes Each Side
- I.F. - denotes Inside Face
- O.F. - denotes Outside Face