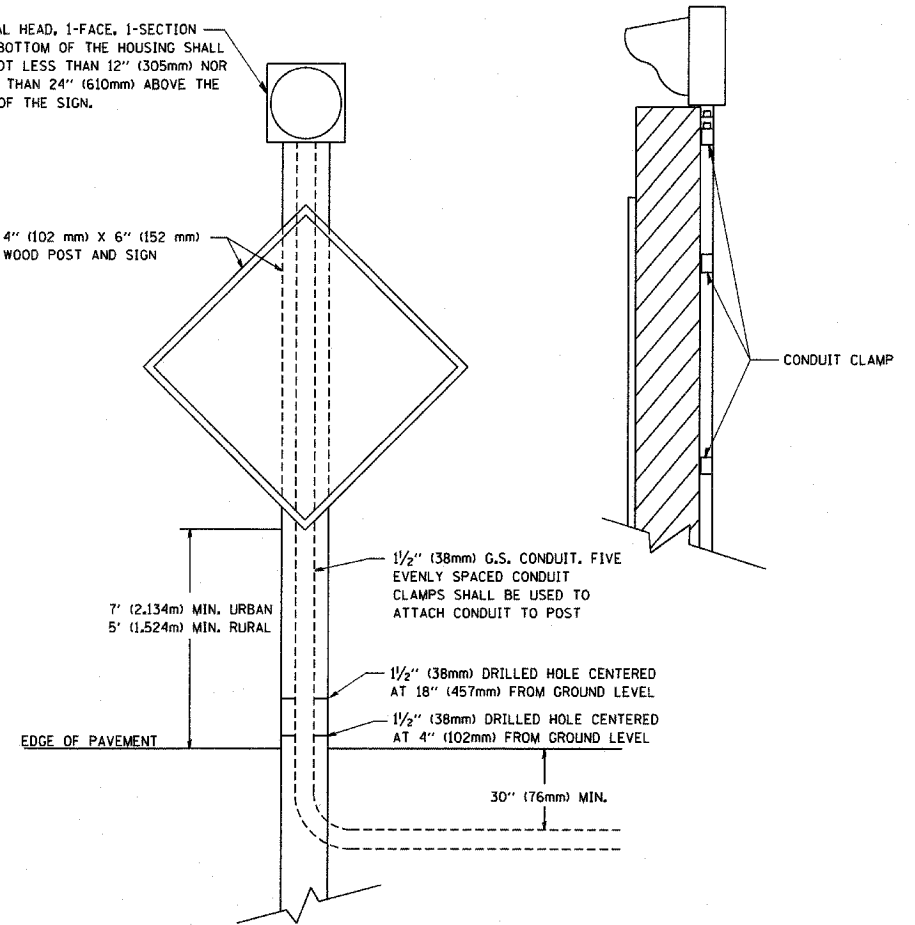


SIGNAL HEAD, 1-FACE, 1-SECTION
 THE BOTTOM OF THE HOUSING SHALL
 BE NOT LESS THAN 12" (305mm) NOR
 MORE THAN 24" (610mm) ABOVE THE
 TOP OF THE SIGN.

4" (102 mm) X 6" (152 mm)
 WOOD POST AND SIGN



POST MOUNTED FLASHING BEACON

FILE NAME = W:\diststd\22x34\ts04.dgn	USER NAME = geglianobt	DESIGNED -	REVISED - 01-01-07
		DRAWN -	REVISED -
	PLOT SCALE = 50,0000' / IN.	CHECKED -	REVISED -
	PLOT DATE = 1/4/2008	DATE -	REVISED -

STATE OF ILLINOIS
 DEPARTMENT OF TRANSPORTATION

POST MOUNTED FLASHING BEACON

SCALE: NONE SHEET NO. 3 OF 3 SHEETS STA. TO STA.

F.A. RTE.	SECTION	COUNTY	TOTAL SHEETS	SHEET NO.
	TS-04		469	393A
FED. ROAD DIST. NO. 1 ILLINOIS FED. AID PROJECT			CONTRACT NO.	