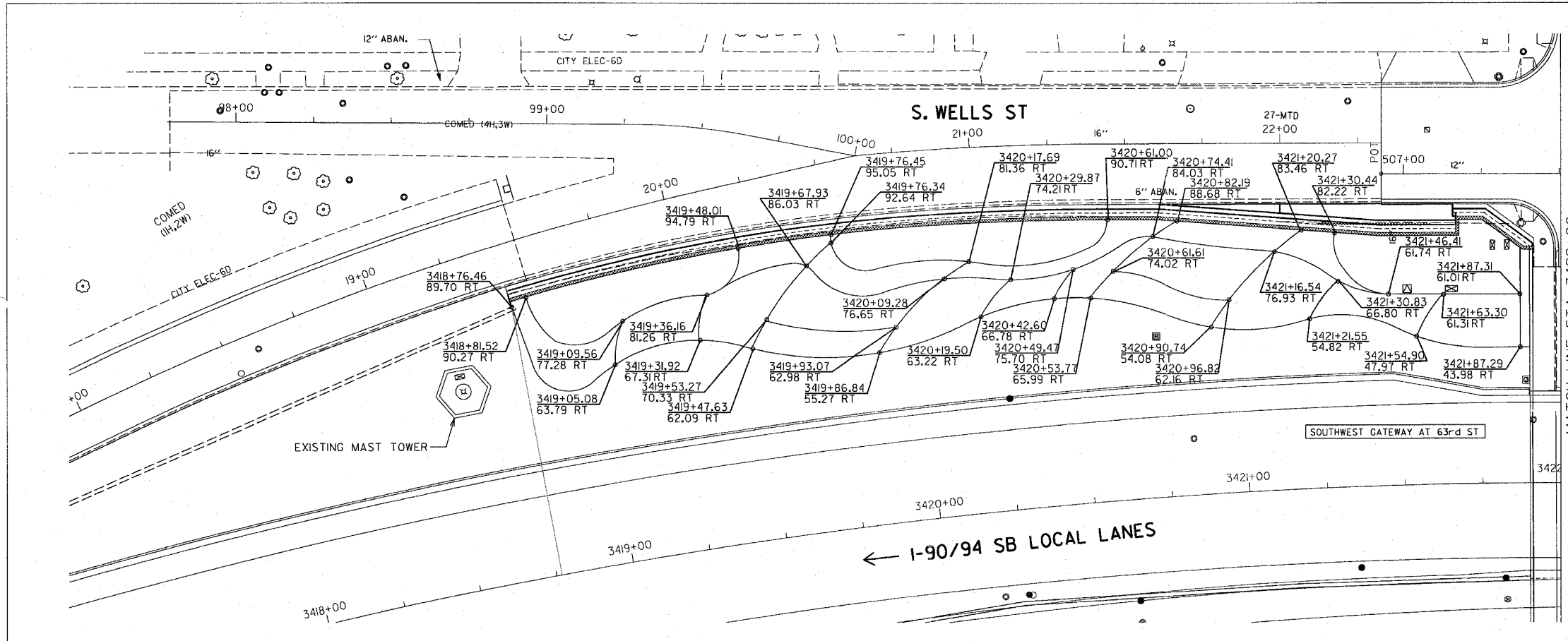
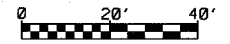
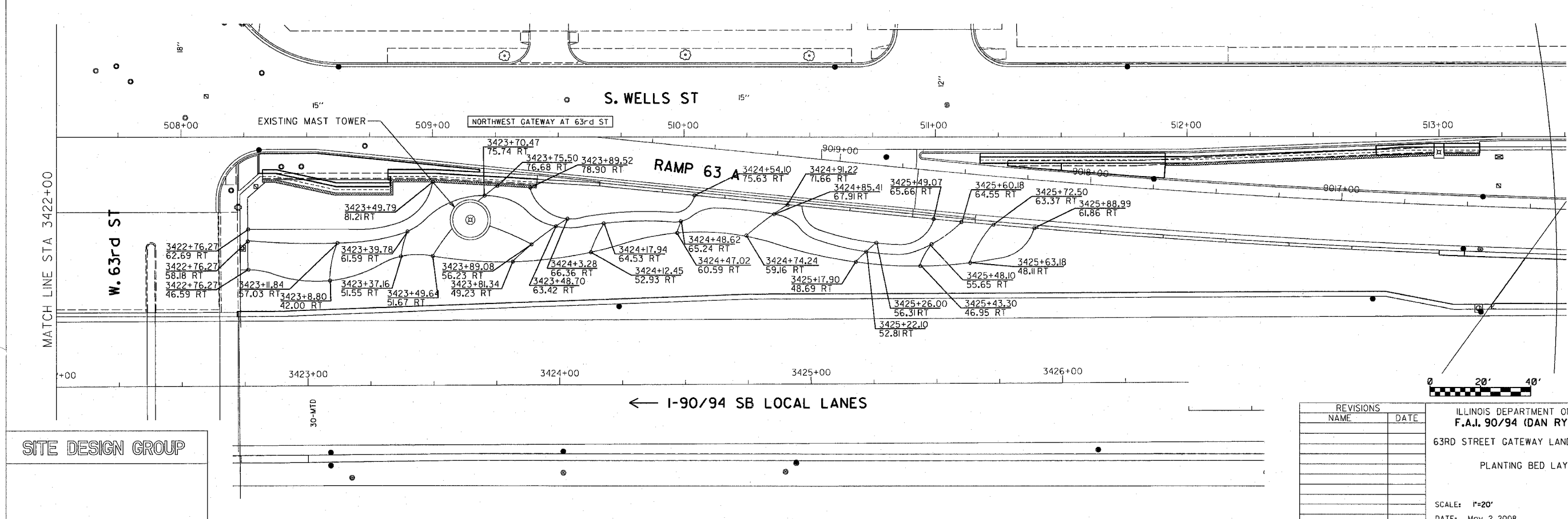


F.A.J. RTE.	SECTION	COUNTY	TOTAL SHEETS	SHEET NO.
90/94	2005-071LS	COOK	39	26
STA. 3418+00		TO STA. 3428+00		
FED. ROAD DIST. NO. 1	ILLINOS	FED. AID PROJECT		
60A77				



NOTE: THE LOCATION OF ALL PLANT MATERIAL SHALL BE STAKED BY CONTRACTOR FOR APPROVAL BY ENGINEER IN FIELD, PRIOR TO INSTALLATION. INDIVIDUAL TREES SHALL BE STAKED WITH IDENTITIES WRITTEN ON STAKES. SHRUB AND PERENNIAL BEDS SHALL BE OUTLINED WITH STAKES AND PAINTED LINES.



SITE DESIGN GROUP

REVISIONS	
NAME	DATE

ILLINOIS DEPARTMENT OF TRANSPORTATION  
**F.A.J. 90/94 (DAN RYAN EXPRESSWAY)**  
 63RD STREET GATEWAY LANDSCAPING AND IRRIGATION  
 PLANTING BED LAYOUT PLANS

SCALE: 1"=20'  
 DATE: May 2, 2008

DRAWN BY: EM  
 CHECKED BY: JO

DATE\$